

# CONSUMER PRICE INDEX MALDIVES

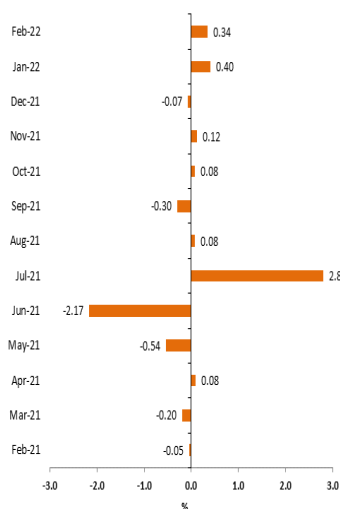
## FEBRUARY 2022

Base Period = August 2020

TIME OF RELEASE: MONDAY 28th MARCH 2022

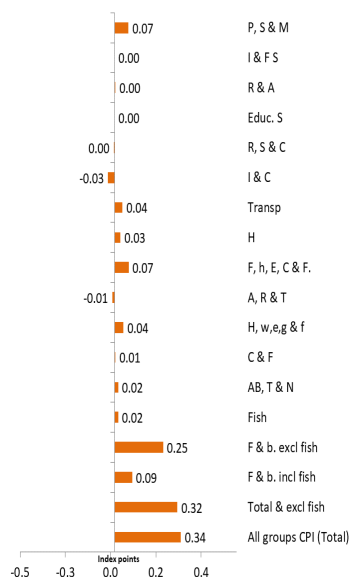
### All groups CPI Monthly change

(February 2021 to February 2022)



### Contribution to monthly change

(January 2022 to February 2022)



### INQUIRIES

For further information about CPI and related statistics, please contact the Maldives Bureau of Statistics at 3008433 or email:

info@stats.gov.mv

### KEY FIGURES

#### Inflation rates : Republic

#### All groups CPI (Total)

	January 2022 to February 2022 % change	February 2021 to February 2022 % change
All groups CPI (Total)	0.34	0.56
Food and non-alcoholic beverages incl fish	0.39	1.66
Tobacco and Aracanuts	0.74	6.94
Clothing & footwear	0.12	0.59
Housing, water, electricity, gas & other fuels	0.20	0.97
Furnishing, household equip., Carpets & Other Floor covering	1.07	2.32
Health	0.42	4.01
Transport	0.49	0.35
Information & Communication	-0.43	-11.01
Recreation, Sports & culture	-0.10	3.03
Education Services	0.00	-0.62
Restaurants and Accomodation services	0.09	3.05
Insurance and Financial Services	0.00	0.00
Personal Care, Social Protection and Miscellaneous goods and servic	1.28	1.59

#### CPI analytical series

	January 2022 to February 2022 % change	February 2021 to February 2022 % change
Total excluding fish	0.33	0.34
Food and non-alcoholic beverages excl fish	0.38	0.76
Fish	0.44	6.08
Actual rentals for housing	-0.08	0.76

### KEY POINTS

The index reference period is August 2019 = 100 and the weight reference period = 2016. Please refer to [http://statisticsmaldives.gov.mv/nbs/wp-content/uploads/2020/10/GuideToCPI\\_Maldives2020 - Publication.pdf](http://statisticsmaldives.gov.mv/nbs/wp-content/uploads/2020/10/GuideToCPI_Maldives2020-Publication.pdf)

#### THE ALL GROUPS CPI

- The Consumer Price Index for all groups CPI rose by +0.34% in February 2022, compared to the rise of +0.40% in January 2022.
- The index for all items excluding fish rose by +0.33% in February 2022 compared to the rise of +0.45% in January 2022.
- The Consumer Price Index for all groups CPI rose by +0.56% through the year to February 2022, compared to the rise of +0.17% through the year to January 2022.

#### OVERVIEW OF THE CPI MOVEMENTS

- The most significant price increase in this month were from Furniture furnishings and loose carpets (+5.24%), Other appliances, articles and products for personal care (+1.25%), Information processing equipment (+7.74%), Fuels and lubricants for personal transport equipment (+5.34%), Services for the maintenance, repair and security of the dwelling (+8.85%), Fruit (+1.57%), Diagnostic imaging services and medical laboratory services (+1.16%), Milk, other dairy products and eggs (+0.49%), Aracanuts (+3.26%), Fish (+0.44%), Security equipment and materials for the maintenance and repair of the dwelling (+1.32%), Oils and fats (+1.86%), Meat (+1.01%), Other personal effects (+4.63%), Actual rental paid by tenants for main residence (0.07%), Garments (+0.36%), Bread and cereals (+0.19%), and Non - durable household goods (+0.48%).
- The most significant price decrease in this month were from Mobile communication services (-1.59%), Mobile telephone equipment (-2.38%), Vegetables (-0.67%) and Actual rentals paid by tenants for main residence (-0.08%).

## NOTES

### FORTHCOMING ISSUES

Issue (monthly)	Release date
March 2022	25 April 2022
April 2022	30 May 2022
May 2022	27 June 2022
June 2022	25 July 2022

### ROUNDING

Any discrepancies between totals and sum of components in this publication are due to rounding.

### ABBREVIATIONS

MBS	Maldives Bureau of Statistics
CPI	Consumer Price Index
n.e.c	not elsewhere classified
F & b. incl fish	Food & non-alcoholic beverages including fish
A, b, t & n	Alcoholic beverages, tobacco & narcotics
C. & f.	Clothing & footwear
H. w., e., g. & o. f	Housing, water, electricity, gas & other fuels
A, R & T	Actual Rentals paid by tenants
F., h. e c & F.	Furnishing, household equip, & other floor coverings
H	Health
Transp.	Transport
I & C	Information & Communication
R, s & C	Recreation, sport & culture
Educ. S	Education services
R & A	Restaurants & accommodation services
I & F s	Insurance & financial services
P, s & m	Personal care, social protection & miscellaneous
IMF	International Monetary Fund

### ACKNOWLEDGMENT

A consultant from IMF, Mr. Brian Graf assisted in the compilation of the index. His assistance was provided to NBS under the auspices of the IMF South Asia Regional Training and Technical Assistance Center (SARTTAC).

Entire process from design to output was carried out with invaluable assistance from Ms. Aishath Shahuda, Ms. Sajida Ahmed and Ms. Aishath Hassan. All their valuable services and those involved in price collection, CPI compilation and providing data from the outlets are gratefully acknowledged. The overall design of this publication is based on Australian Bureau of Statistics (ABS) Consumer Price Index publication. Weights were developed by Mr. Brian Graf with the assistance of Ms. Sajida Ahmed. The data entry setup was developed by Ms. Sajida Ahmed and Ms. Azmeela Hassan.

This issue was prepared by Ms. Sajida Ahmed and Ms. Azmeela Hassan. The entire process of data validation, compilation and updating has been done in close collaboration with all the data providing outlets. Data collection, verification and compilation has been carried out by Ms. Aishath Hassan, Ms. Sajida Ahmed, Ms. Azmeela Hassan, Mr. Ali Umar, Mr. Vishal Ahmed and Ms. Fathimath Umaina. All those involved worked tirelessly to make this publication a reality. We thank all the outlets providing data for this work in Male', Hdh, Gdh, Gn and Addu city.

## MAIN CONTRIBUTORS TO CHANGE

### CPI GROUPS

The discussion of the CPI groups below are ordered in terms of their absolute significance to the change in All groups index points for the month (see table 1).

### CONTRIBUTION TO MONTHLY CHANGE (February 2022)

	Republic	Male'	Atolls
All groups CPI (Total)	0.34	0.41	0.24
Food and non-alcoholic beverages incl fish	0.09	0.11	0.06
Tobacco & Aracanuts	0.02	0.02	0.01
Clothing & footwear	0.01	0.01	0.00
Housing, water, electricity, gas & other fuels	0.04	0.00	0.10
Furnishing, household equip., Carpets & Other Floor covering	0.07	0.12	0.01
Health	0.03	0.02	0.04
Transport	0.04	0.05	0.03
Information & Communication	-0.03	-0.03	-0.03
Recreation, Sports & culture	0.00	-0.01	0.00
Education Services	0.00	0.00	0.00
Restaurants and Accomodation services	0.00	0.00	0.01
Insurance and Financial Services	0.00	0.00	0.00
Personal Care, Social Protection and Miscellaneous goods and services	0.07	0.12	0.00

### TOTAL PERCENTAGE CHANGE FROM PREVIOUS MONTH, DISPLAYING ALL CPI GROUPS FOR REPUBLIC (January 2022 to February 2022)



### FOOD AND NON-ALCOHOLIC BEVERAGES (+0.39%)

The Food and non-alcoholic beverages group rose by +0.39% in February 2022. The main contributor to this rise was the increase in prices of Tuna (+1.26%), cooking oil (+2.25%), mango (+7.16%), frozen chicken (+1.30%), oranges (+8.39%), cucumber (+5.98%), flavored milk packet (+1.26%), potatoes (+4.14%) and onion (+1.39%), This rise was partially offset by the decrease in price of green chilly (-15.16%) and carrot (-2.76%),

Over the twelve months until February 2022, the food and alcoholic beverages group rose by +1.66%.

### FURNISHING HOUSEHOLD EQUIPMENTS, CARPETS, AND OTHER FLOOR COVERINGS (+1.07%)

The Furnishing household equipment, carpets and other floorings group rose by +1.07% in February 2022. The main contributors for this rise was the increase in price of bed (+2.76%), wardrobe (+13.79%), mattress (+2.60%), sofa set (+4.96%), dining table set (+8.14%) and bedroom set (+3.39%).

Over the twelve months until February 2022, the Furnishing household equipment, carpets and other floorings group rose by +2.32%

## MAIN CONTRIBUTORS TO CHANGE

---

<b>PERSONAL CARE, SOCIAL PROTECTION AND MISCELLANEOUS GOODS AND SERVICES</b> (+1.28%)	<p>The Personal care social protection and miscellaneous goods and services group rose by +1.28% in February 2022. The main contributors for this rise was the increase in price of perfume (+6.16%) and school bags (+15.34%).</p> <p>Over the twelve months until February 2022, the Personal care social protection and miscellaneous goods and services group rose by +1.59%.</p>
<b>HOUSING, WATER, ELECTRICITY, GAS AND OTHER FUELS</b> (+0.20%)	<p>The Housing, water, electricity, gas and other fuels group rose by +0.20% in February 2022. The main contributor for this rise was the increase in price of labor cost for repair (+8.85%), water based paint (+4.06%) and tiles (+2.64%). This rise was partially offset by the decrease in price of two bedroom (-0.12%).</p> <p>Over the twelve months until February 2022, the Housing, water, electricity, gas and other fuels group rose by +1.06%.</p>
<b>TRANSPORT</b> (+0.49%)	<p>The Transport group rose by +0.49% in February 2022. The main contributor to this rise was the increase in price of petrol (+6.22%),</p> <p>Over the twelve months until February 2022, the Transport group rose by +0.35%.</p>
<b>HEALTH</b> (+0.42%)	<p>The Health group rose by +0.42% in February 2022. The main contributor to this rise was increase in price of lab diagnostics for outpatients (+1.15%).</p> <p>Over the twelve months until February 2022, the Health group rose by +4.01%.</p>
<b>TOBACCO AND ARACANUT</b> (+0.74%)	<p>Tobacco and aracanut group rose by +0.74% in February 2022. The main reason for this rise was the increase in price of raw aracanut (+5.16%).</p> <p>Over the twelve months until February 2022, the Tobacco and aracanut group rose by +6.94%.</p>
<b>FISH</b> (+0.44%)	<p>The Fish group rose by +0.44% in February 2022. The main contributor to this rise was the increase in price of Tuna (+1.26%).</p> <p>Over the twelve months until February 2022, the Fish group rose by +6.08%.</p>

## MAIN CONTRIBUTORS TO CHANGE

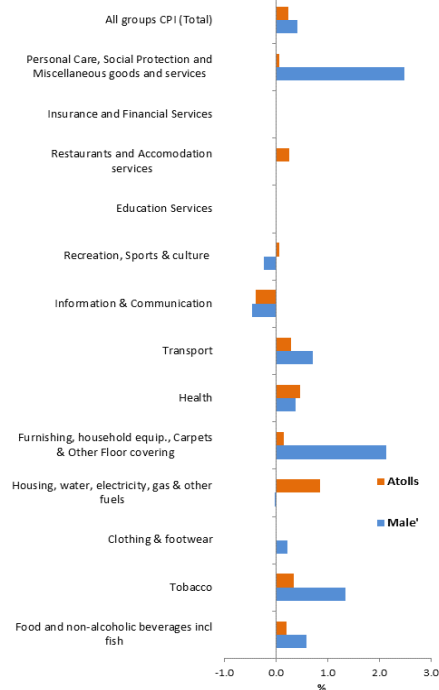
---

CLOTHING AND FOOTWEAR (+0.12%)	<p>The Clothing and footwear group rose by +0.12% in February 2022. The main contributor for this rise was the increase in price of men's shirt (+4.04%). This rise was partially offset by the decrease in price of women's clothing (-6.22%)</p> <p>Over the twelve months until February 2022, the Clothing and footwear group rose by +0.59%.</p>
RESTAURANTS AND ACCOMMODATION SERVICES (+0.09%)	<p>The Restaurants and accommodation services group rose by +0.09% in February 2022.</p> <p>Over the twelve months until February 2022, the Restaurants and accommodation services group rose by +3.05%.</p>
EDUCATION SERVICES (0.00%)	<p>The Education services group remain unchanged in February 2022.</p> <p>Over the twelve months until February 2022, the Education services group fell by -0.62%.</p>
INSURANCE AND FINANCIAL SERVICES (+0.00%)	<p>The Insurance and financial services group remained unchanged in February 2022.</p> <p>Over the twelve months until February 2022, the Insurance and financial services group remained unchanged.</p>
RECREATION, SPORT AND CULTURE (-0.10%)	<p>The Recreation, sport and culture group fell by -0.10% in February 2022.</p> <p>Over the twelve months until February 2022, the Recreation, sport and culture group rose by +3.03%.</p>
INFORMATION AND COMMUNICATION (-0.43%)	<p>The Information and communication group fell by -0.43% in February 2022. The main contributor to this fall was the decrease in price of *unit price of mobile phone services used by consumers (-1.59%) and mobile phone (-2.38%) . This fall was partially offset by the increase in price of computer (+10.47%) and laptop (+4.98%)</p> <p>Over the twelve months until February 2022, the Information and communication group fell by -11.01%.</p> <p>Note: *The total amount paid and total units consumed by different subscribers for voice,sms and data is used to calculate prices of mobile services. Thus, the weighted average amount paid per unit of mobile services is used to monitor the changes in price. Refer to <a href="http://statisticsmaldives.gov.mv/nbs/wp-content/uploads/2020/02/Review-of-the-Consumer-Price-Index-2019-Base-Period-Decust-2019.pdf">http://statisticsmaldives.gov.mv/nbs/wp-content/uploads/2020/02/Review-of-the-Consumer-Price-Index-2019-Base-Period-Decust-2019.pdf</a></p>

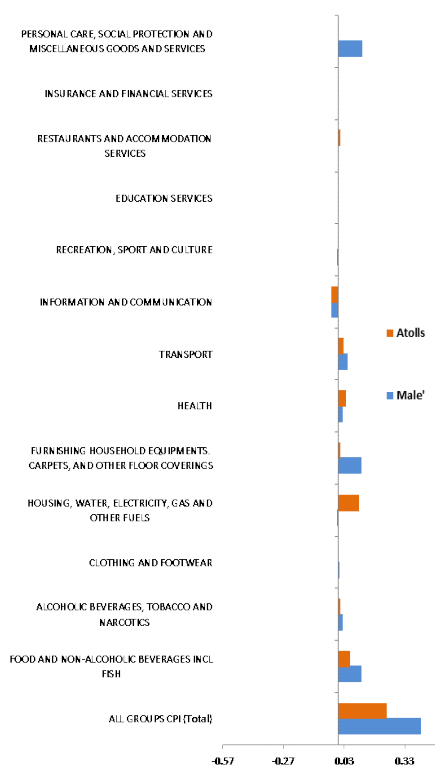
# COMPARISON BETWEEN MALE' AND ATOLLS

## ALL GROUPS CPI

Total percentage change from previous month, displaying all CPI groups for Male' & Atolls, (January 2022 to February 2022)



## Contribution to monthly change, Male' & Atolls (January 2022 to February 2022)



Inflation rates : Male' & Atolls

January 2022 to February 2022

	% change	
	Male'	Atolls
All groups CPI (Total)	0.41	0.24
Food and non-alcoholic beverages incl fish	0.58	0.21
Tobacco and Aracanuts	1.34	0.34
Clothing & footwear	0.22	0.01
Housing, water, electricity, gas & other fuels	0.00	0.85
Furnishing, household equip., Carpets & Other Floor covering	2.13	0.15
Health	0.38	0.46
Transport	0.71	0.29
Information & Communication	-0.46	-0.39
Recreation, Sports & culture	-0.24	0.06
Education Services	0.00	0.00
Restaurants and Accomodation services	0.01	0.25
Insurance and Financial Services	0.00	0.00
Personal Care, Social Protection and Miscellaneous goods and serv	2.48	0.07
<b>CPI analytical series</b>		
Total excluding fish	0.43	0.21
Food and non-alcoholic beverages excl fish	0.68	0.09
Fish	0.09	0.74
Actual rentals for housing	-0.08	-0.08

CPI rose at the All Group Levels in Male' by +0.41% and in Atolls by +0.24% in February 2022. (See table 2 & 3).

In Male' the most significant positive contributor was Personal care, social protection and miscellaneous group which was recorded at +2.48% due to the increase in price of perfume (+9.73%) and school bags (+30.06%).

In Male' the most significant negative contributor was Information and communication group which was recorded at -0.46% due to the decrease in \*unit price of mobile phone services used by consumers (-1.59%) and price of mobile phones (-4.23%). This was partially offset by the increase in price of computer (+13.07%), laptop (+10.82%) and land line communication service (+7.49%).

In Atolls the most significant positive contributor was housing, water, electricity, gas & other fuels group which was recorded at +0.85% due increase in price of labor cost for repair (+11.26%), tiles (+2.40%) and sand (+5.11%).

In Atolls the most significant negative contributor was Information and communication group which was recorded at -0.39% due to the decrease in price of \*unit price of mobile phone services used by consumers (-1.59%). This was partially offset by the increase in price of computer (+8.15%).

Note: \*The total amount paid and total units consumed by different subscribers for voice, SMS and data is used to calculate prices of mobile services. Thus, the weighted average amount paid per unit of mobile services is used to monitor the changes in price. Refer to <http://statisticsmaldives.gov.mv/nbs/wp-content/uploads/2020/02/Review-of-the-Consumer-Price-Index-2019-Base-Period-Decust-2019.pdf>

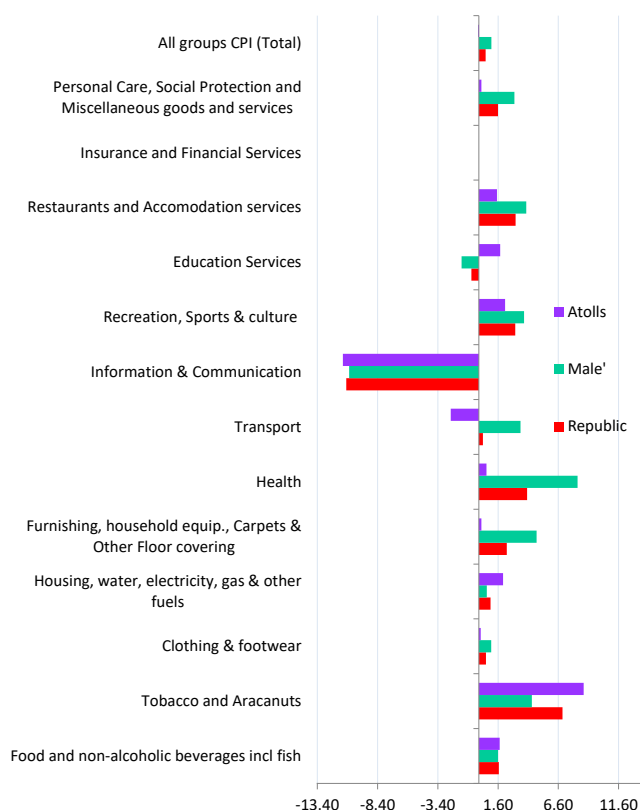
# MONTH ON MONTH COMPARISON BETWEEN REPUBLIC, MALE' AND ATOLLS

February 2021 to February 2022

## Inflation rates : Republic, Male' & Atolls

	% change		
	Republic	Male'	Atolls
All groups CPI (Total)	0.56	1.04	-0.06
Food and non-alcoholic beverages incl fish	1.66	1.59	1.73
Tobacco and Aracanuts	6.94	4.40	8.70
Clothing & footwear	0.59	1.02	0.16
Housing, water, electricity, gas & other fuels	0.97	0.66	2.02
Furnishing, household equip., Carpets & Other Floor covering	2.32	4.79	0.22
Health	4.01	8.20	0.63
Transport	0.35	3.47	-2.33
Information & Communication	-11.01	-10.76	-11.29
Recreation, Sports & culture	3.03	3.75	2.18
Education Services	-0.62	-1.43	1.77
Restaurants and Accomodation services	3.05	3.93	1.50
Insurance and Financial Services	0.00	0.00	0.00
Personal Care, Social Protection and Miscellaneous goods and services	1.59	2.96	0.21
<b>CPI analytical series</b>			
Total excluding fish	0.34	0.95	-0.47
Food and non-alcoholic beverages excl fish	0.76	1.16	0.37
Fish	6.08	3.82	8.00
Actual rentals for housing	0.76	0.76	0.76

## TOTAL PERCENTAGE CHANGE FROM MONTH ON MONTH, DISPLAYING ALL CPI GROUPS FOR RE-PUBLIC, MALE' AND ATOLLS (February 2021 to February 2022)



Month on month CPI rose at the All Group Levels for the Republic by +0.56% while in Male' it rose by +1.04% and in Atolls, it fell by -0.06%.

Price change for Major groups in Republic, Male' and the Atolls showed a similar pattern as they tend to move in the same direction with the exception of Transport group and Education services group.

At Republic level the most significant positive contributor to the rise was Tobacco and aracanut group (+6.94%). The most negative contributor to this fall was Information & Communication group (-11.01%).

In Male' The most significant positive contributor to the rise was Health group (+8.20%). The most negative contributor to this fall was Information and Communication group (-10.76%).

In Atolls the most negative contributor to the fall was Information and Communication group (-11.29%). The most significant positive contributor was Tobacco and aracanut group (+8.70%).

# COMPARISON BETWEEN REPUBLIC, MALE' AND ATOLLS

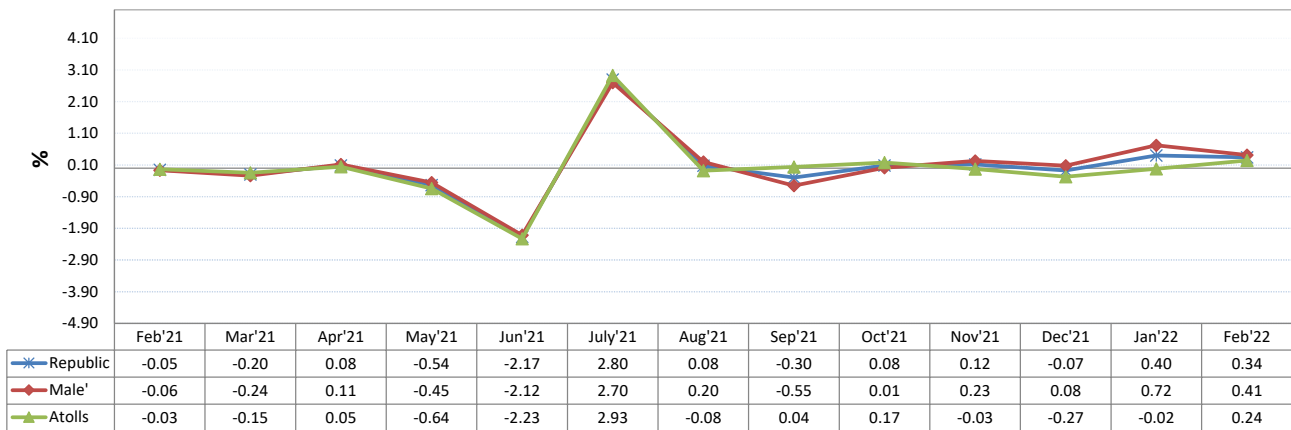
## ALL GROUPS CPI

### ALL GROUPS CPI, All groups index numbers and percentage changes

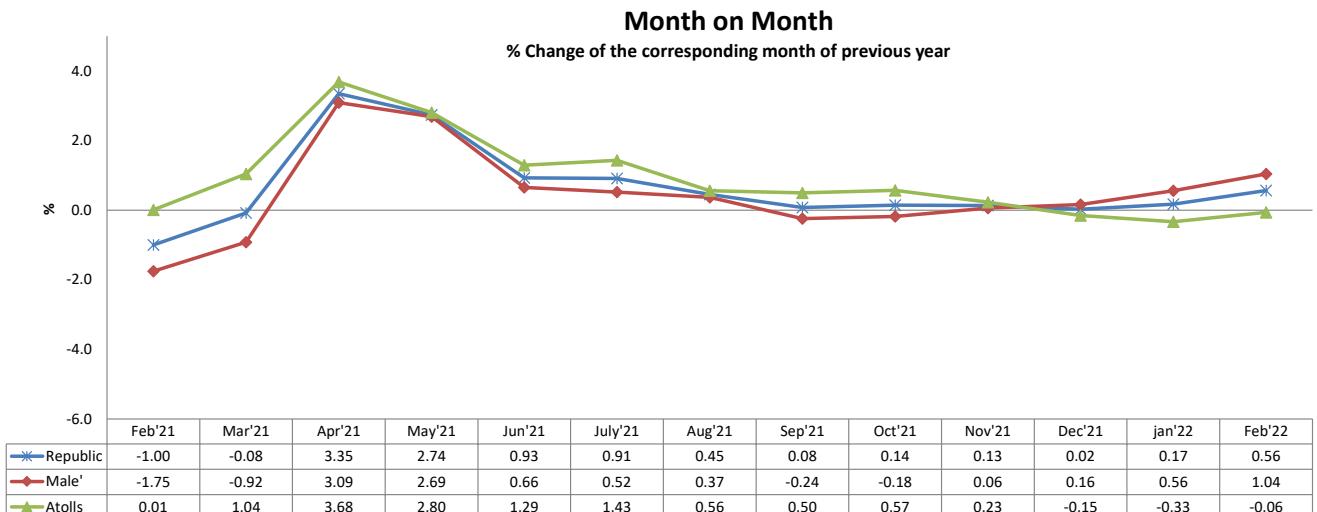
	Index	Percentage change	
	number (a)		
	Feb-22	January 2021 to February 2022	February 2021 to February 2022
Republic	99.81	0.34	0.56
Male'	99.53	0.41	1.04
Atolls	100.19	0.24	-0.06

(a) Base of each index: Aug 2019=100

### Monthly Inflation Rates (compared to previous month)



### PERCENTAGE CHANGES (from corresponding month of previous year)



# LIST OF TABLES

---

## CONSUMER PRICE INDEX

1. CPI groups and sub-group, Republic
2. CPI groups and sub-group, Male'
3. CPI groups and sub-group, Atolls
4. CPI groups, sub-group and expenditure class, Republic (available only on website)
5. CPI groups, sub-group and expenditure class, Male' (available only on website)
6. CPI groups, sub-group and expenditure class, Atolls' (available only on website)
7. Analytical series (available only on website)
8. All groups CPI (Total), index numbers (available only on website)