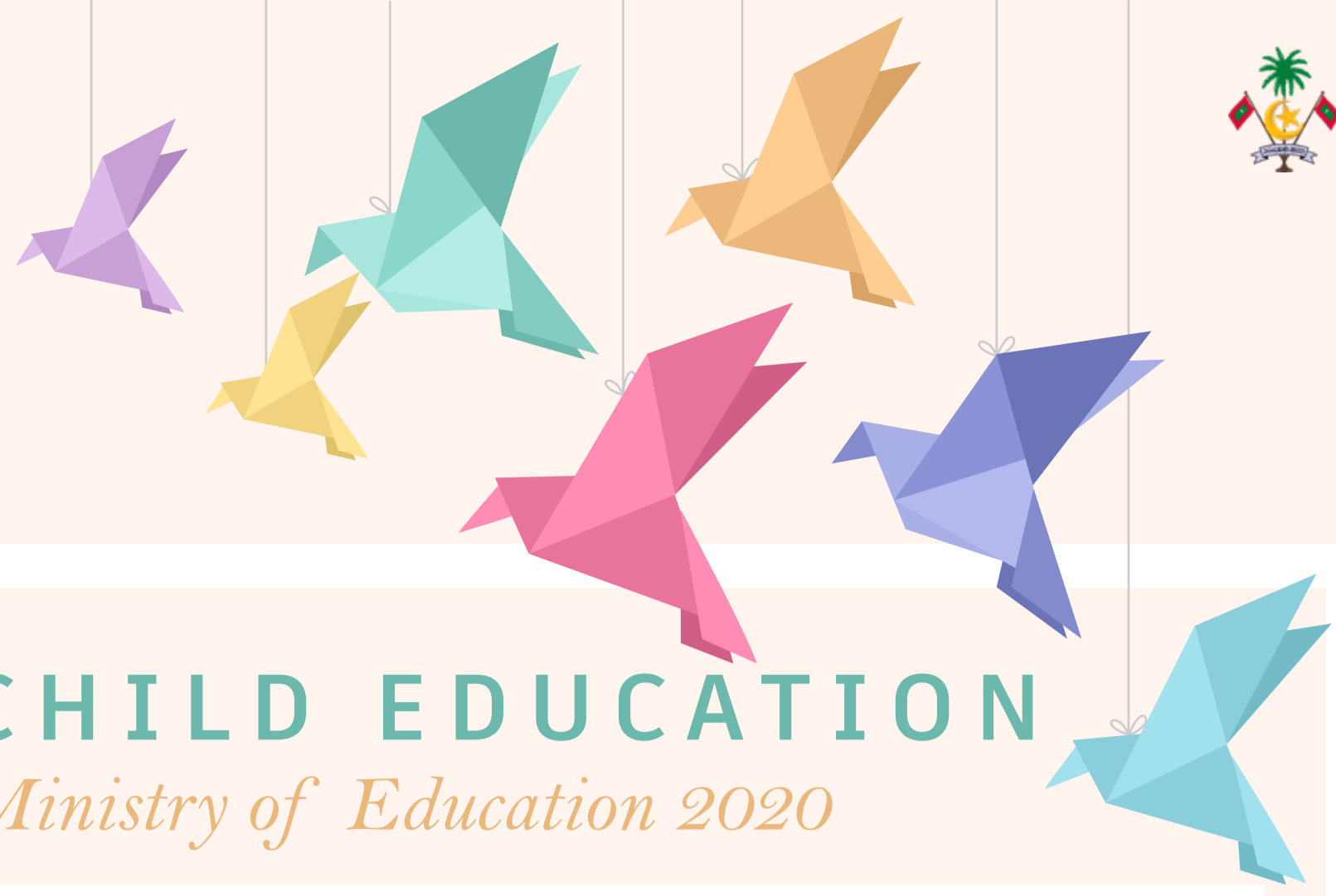


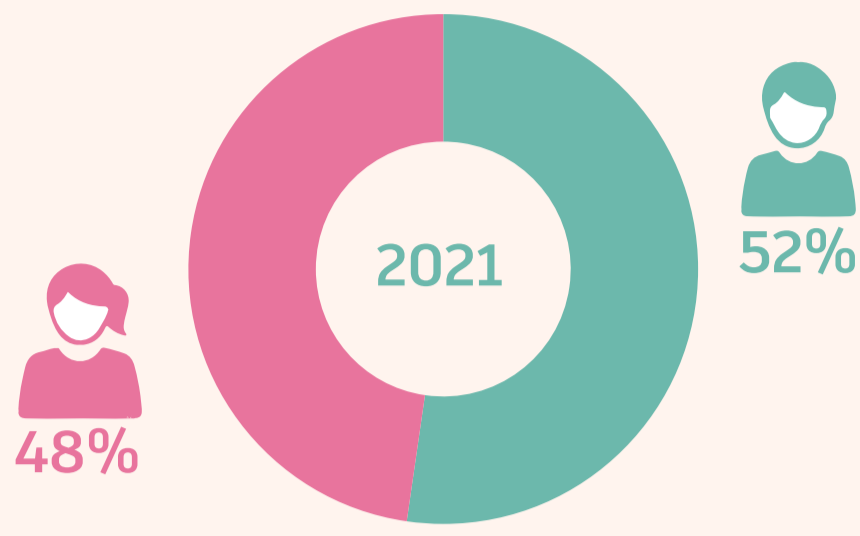
# CHILDREN'S DAY 2021

National Bureau of Statistics



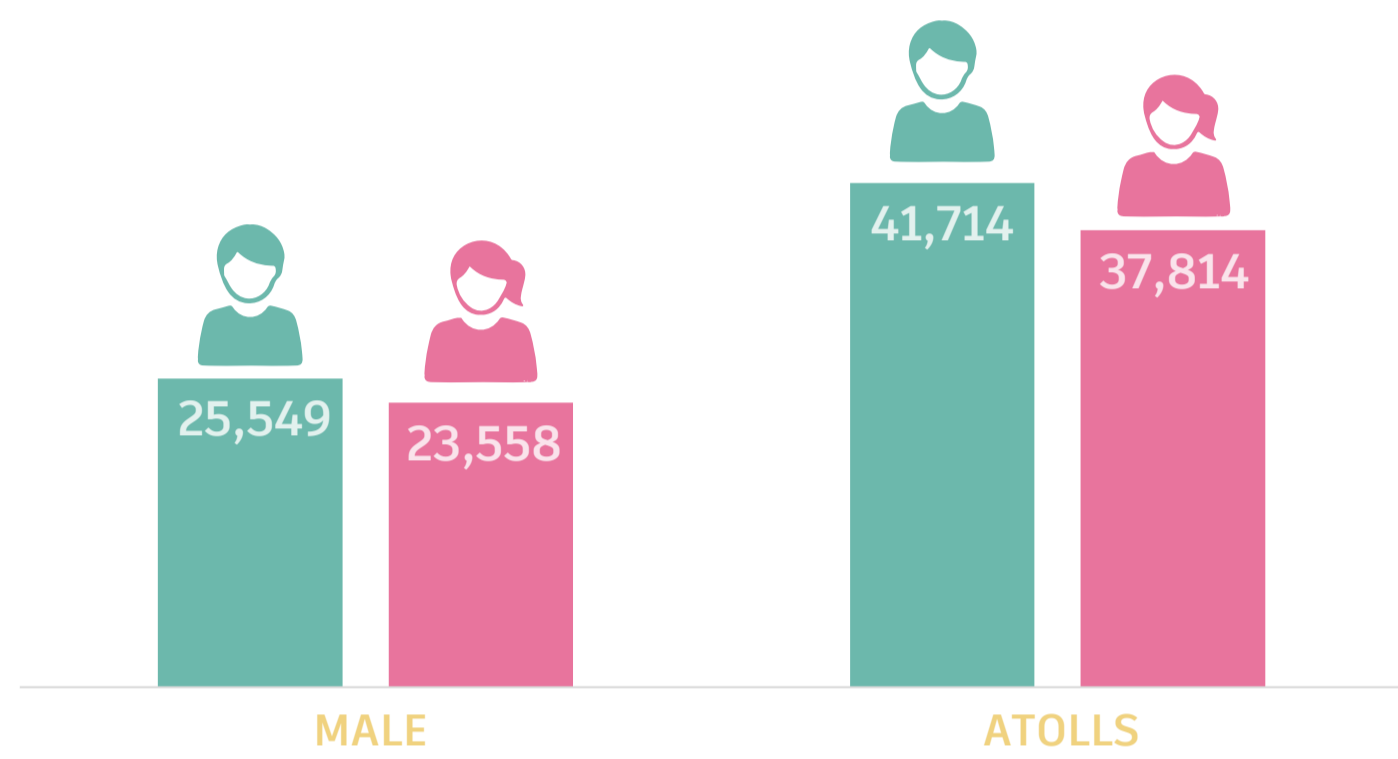
## CHILD POPULATION

Maldives Population Projections 2021



Under 18 years population is **128,635** for the year 2021. Child population accounts for **23%** of the total population.

### UNDER 18 POPULATION BY LOCALITY & SEX, 2021

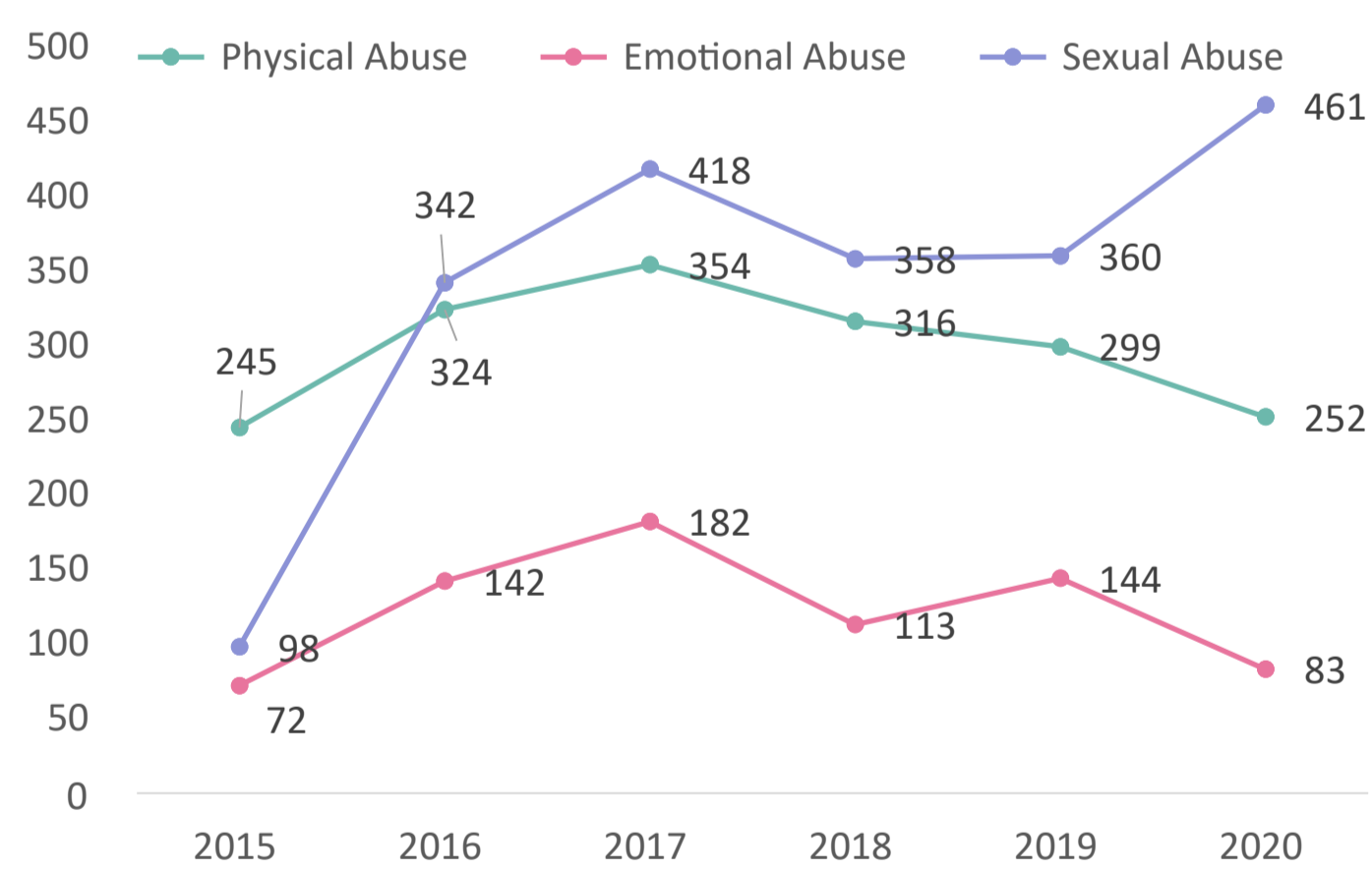


Among the child population, **42%** lives in Male'.

## CHILD ABUSE

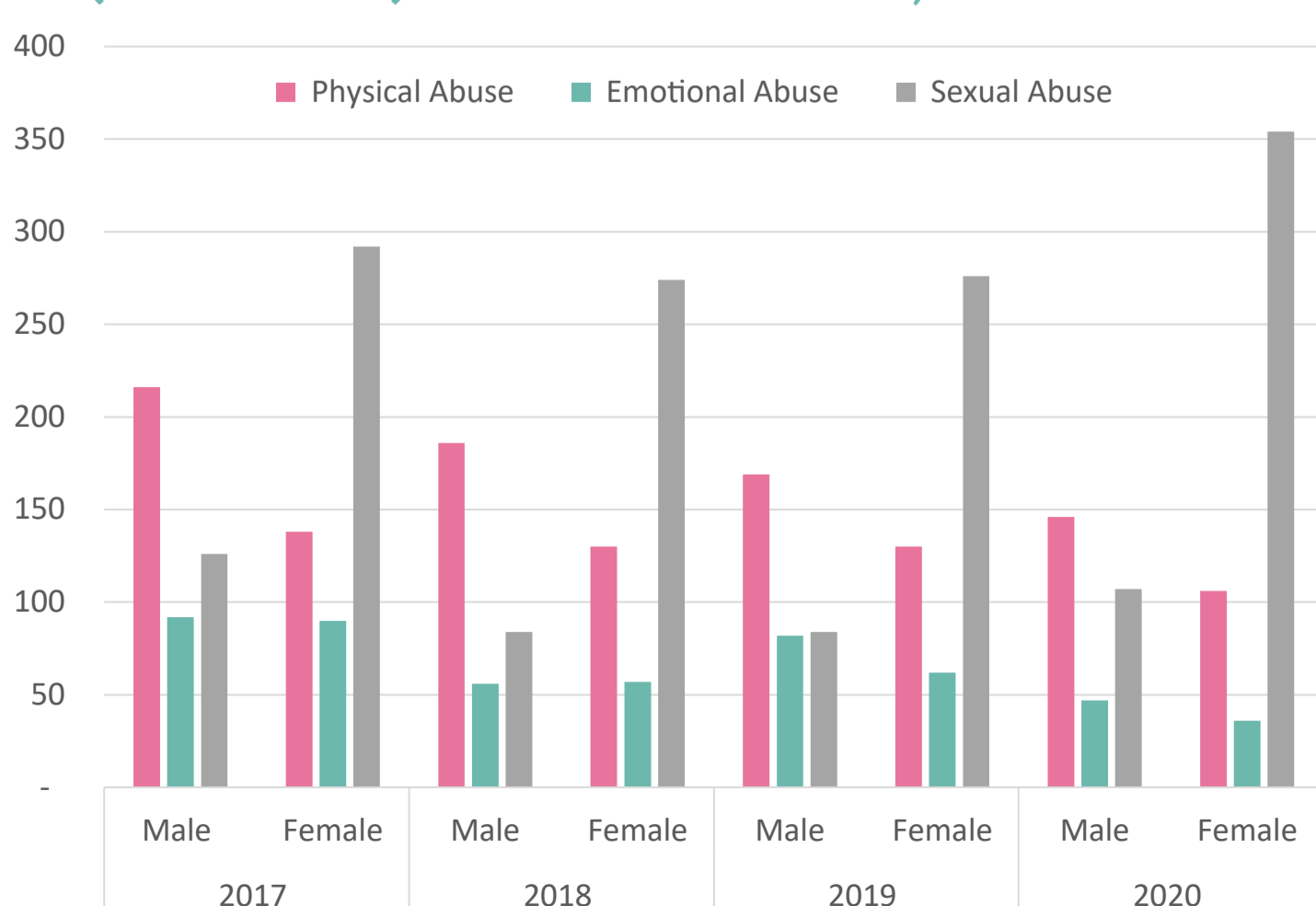
Ministry of Gender, Family and Social Services, 2020

### SELECTED TYPES OF REPORTED CHILD ABUSE CASES (UNDER 18) BY TYPE, 2015 - 2020



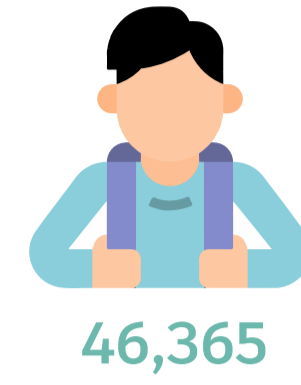
During the year 2020, from the 1,283 reported cases, highest number of reported child abuse cases are sexual abuse and neglect cases.

### NUMBER OF REPORTED CHILD ABUSE CASES (UNDER 18) BY TYPE AND SEX, 2017 - 2019



## CHILD EDUCATION

Ministry of Education 2020

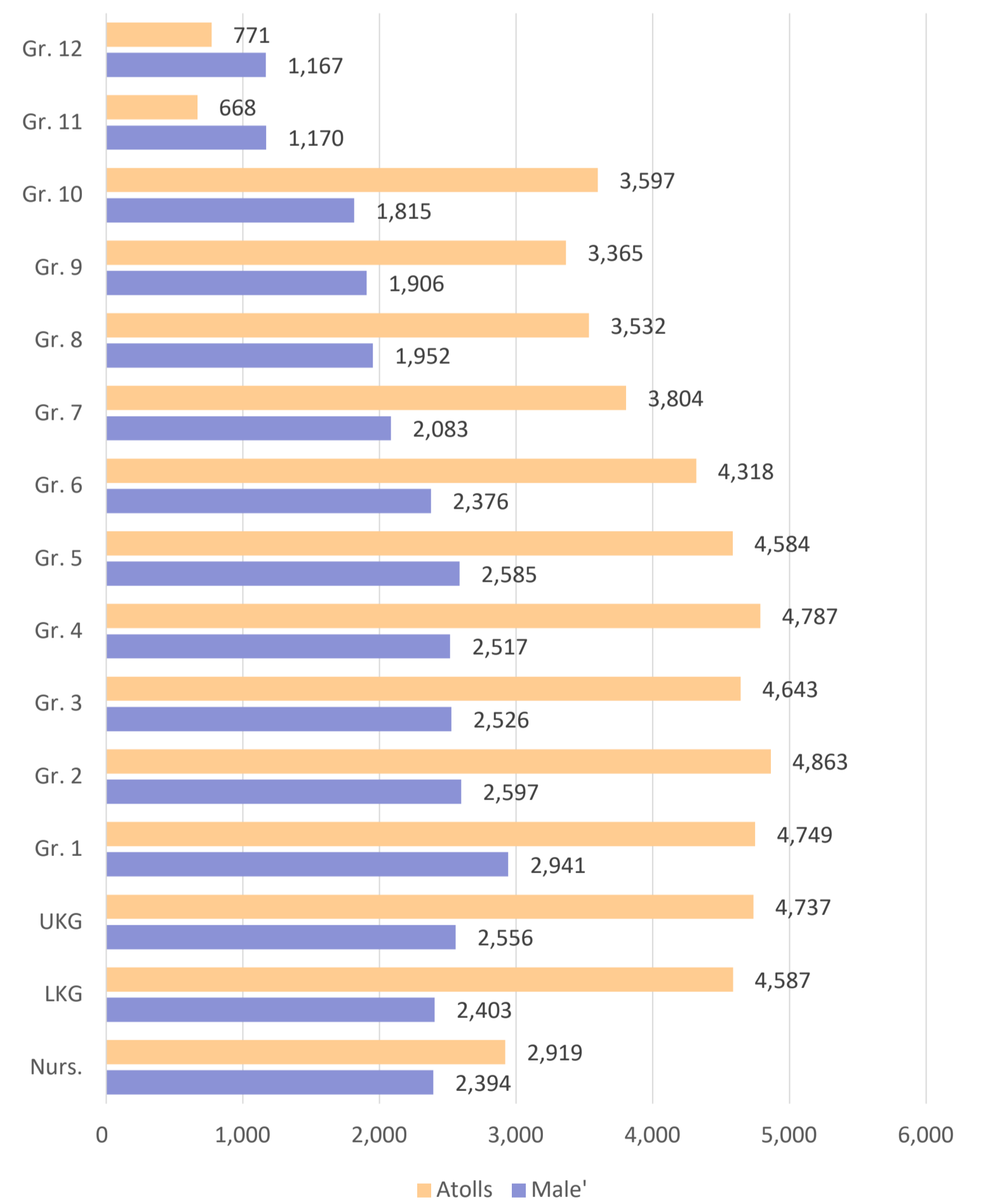


During the year 2020, a total of **90,565** students got enrolled in different schools of Maldives.



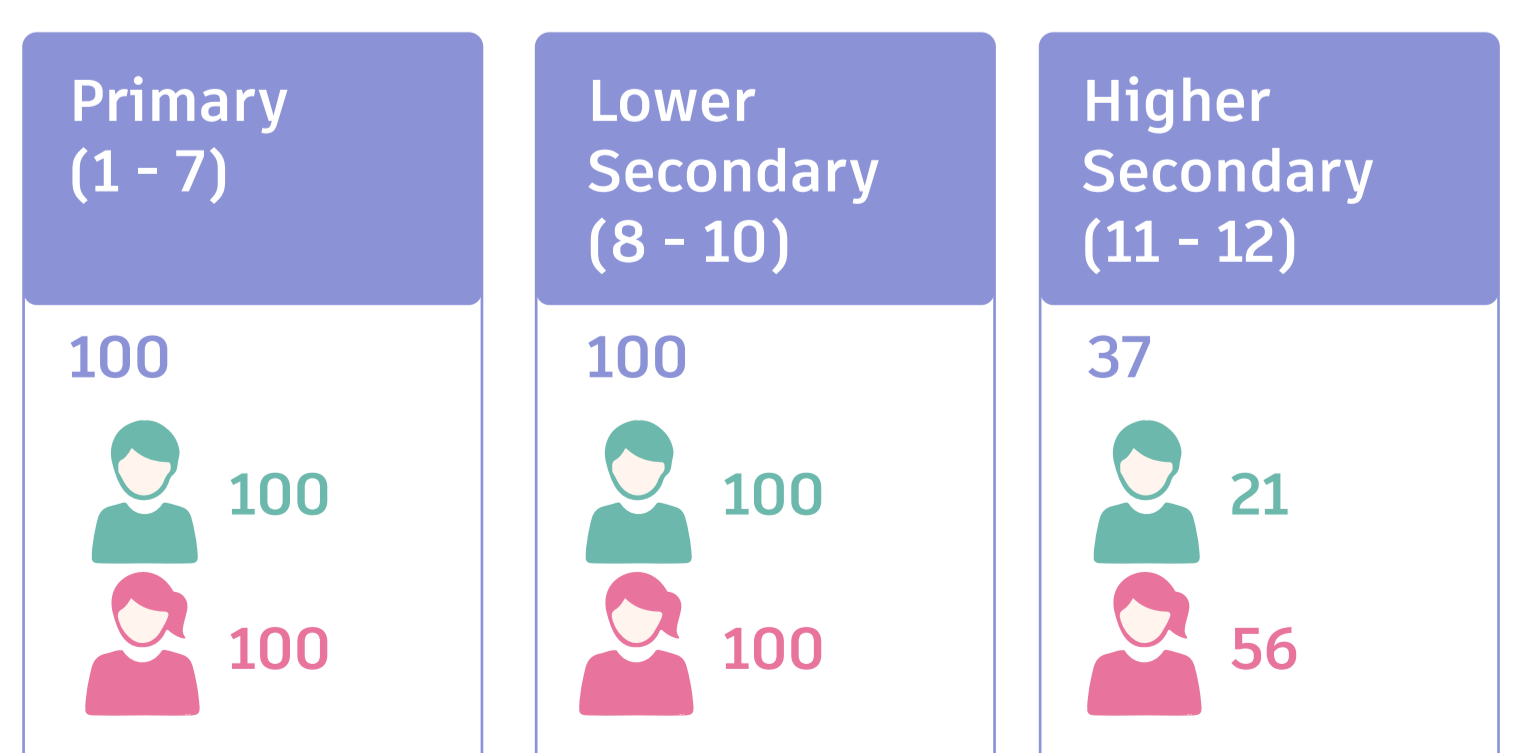
Among the total student enrollment, **37%** of the students are enrolled in schools in Male'.

### NUMBER OF STUDENTS ENROLLED BY GRADE AND LOCALITY, 2020



Access to higher education shows a huge inequality in Atolls compared to Male'.

### NET ENROLMENT RATIO BY LEVEL AND SEX, 2019



Out of every **100** children within official age-group for higher secondary education, only **37** were enrolled.

# CHILDREN'S DAY 2021

National Bureau of Statistics



## CHILD HEALTH

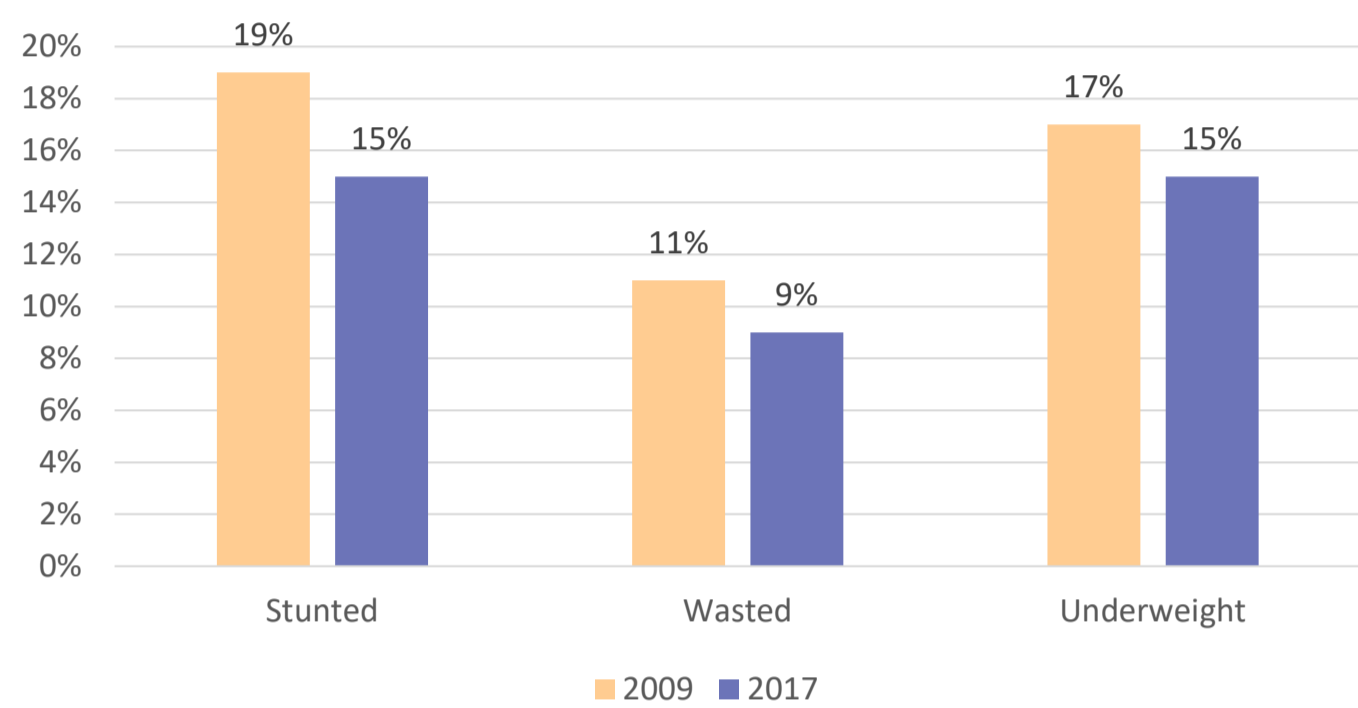
Demographic Health Survey 2017



Stunting (Low height for age) is caused by long-term insufficient nutrition intake and frequent infections.

15 out of every 100 children in Maldives were stunted during the year 2017.

### NUTRITION STATUS OF CHILDREN UNDER 5 YEARS, 2009, 2017



Percentage of children under 6 months who were **Exclusively Breastfed** increased from 48% in 2009 to 64% in 2017.

### ANAEMIA IN CHILDREN, 2017



46%



53%

Anaemia is higher among boys than girls.

## CHILDREN WITH DISABILITY

5 - 17 years

Household Income and Expenditure Survey 2019

4.4%  
Prevalence of disability among children



4.0%



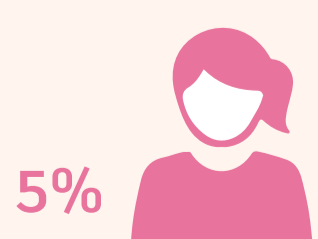
4.7%

Children experience difficulty in remembering and communicating

## CHILDREN SUFFERING CHRONIC DISEASES

5 - 17 years / Resident Maldivian

Household Income and Expenditure Survey 2019



5%



7%

Among children (5-17 years) more boys suffer with long term diseases/ chronic condition

## CHILD PROTECTION

National Social Protection Agency,

2020

SINGLE PARENT ALLOWANCE GIVEN, 2020



2,905



4,965

FOSTER PARENT ALLOWANCE GIVEN, 2020

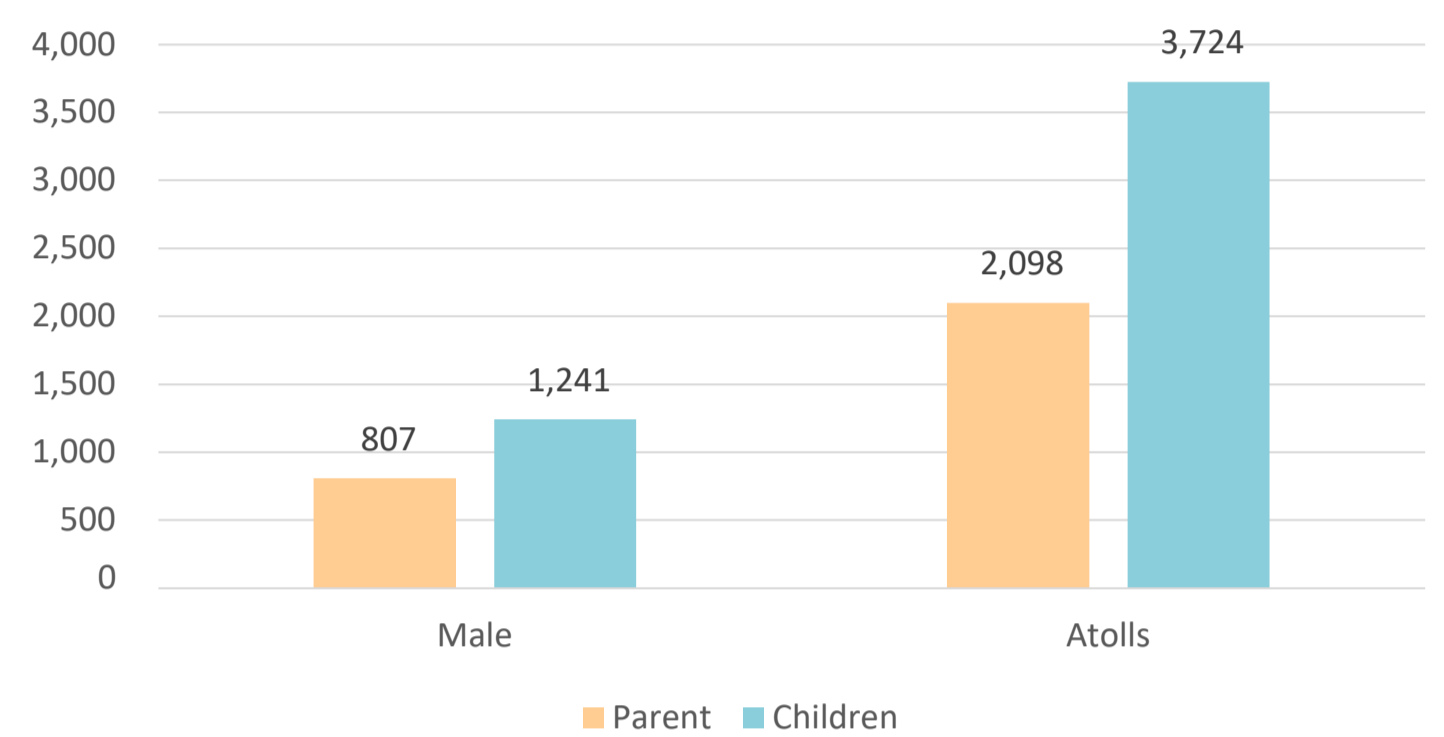


111

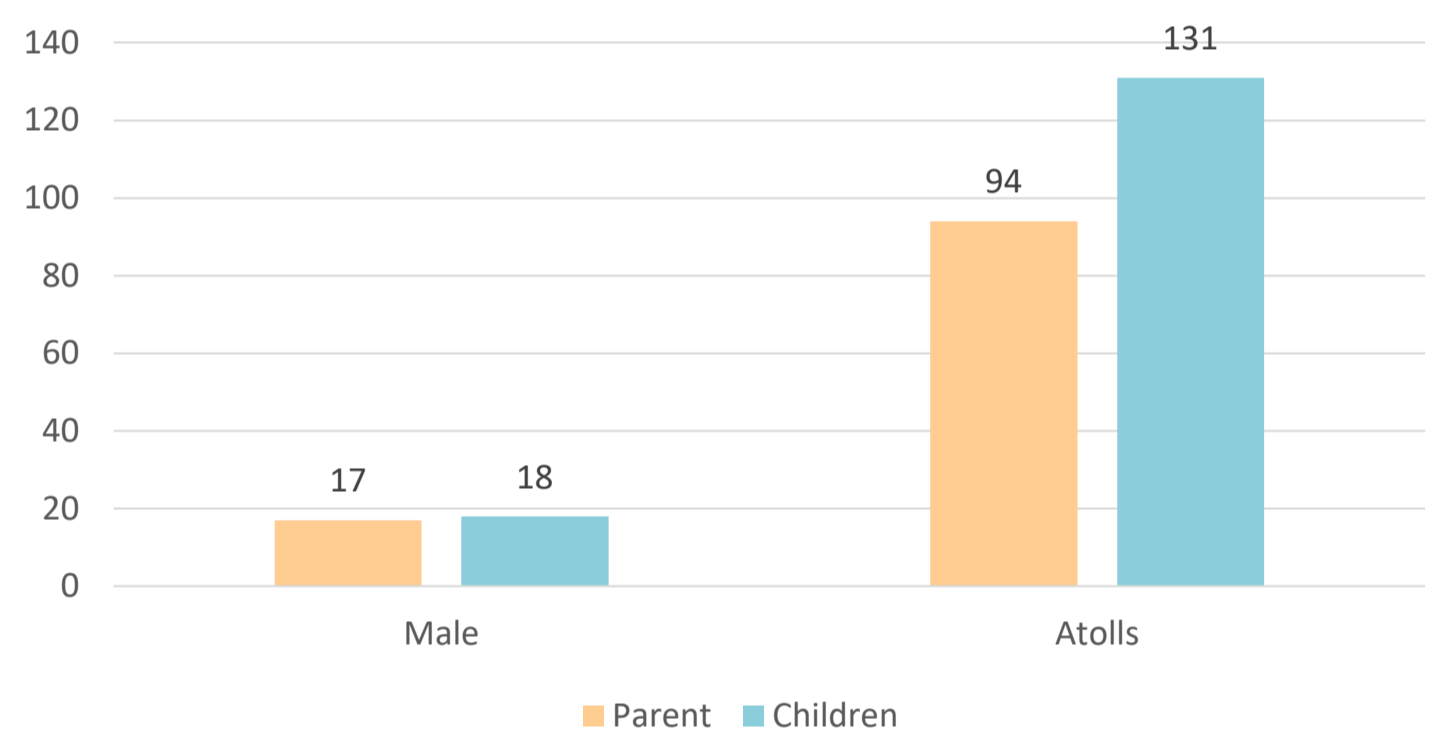


149

### SINGLE PARENT ALLOWANCE GIVEN, 2020



### FOSTER PARENT ALLOWANCE GIVEN, 2020



Governments play a critical role in safeguarding every child from poverty. By strengthening the linkage between cash benefits and other social services, systematizing data collection, and routinely monitoring progress, Governments can help ensure all children – especially those hardest to reach – are protected

-UNICEF Maldives-

## CHILDREN WITH LONG TERM DISEASES/ CHRONIC CONDITION

Children with a chronic disease by type of chronic condition (5-17 years)

Household Income and Expenditure Survey 2019

