



Household INCOME AND EXPENDITURE Survey 2019

POPULATION



National Bureau of Statistics

Ministry of National Planning, Housing & Infrastructure

DEMOGRAPHY

Population at a glance

HIES 2019/20 gives a total population of **451,622** people with **52%** of the population as female.



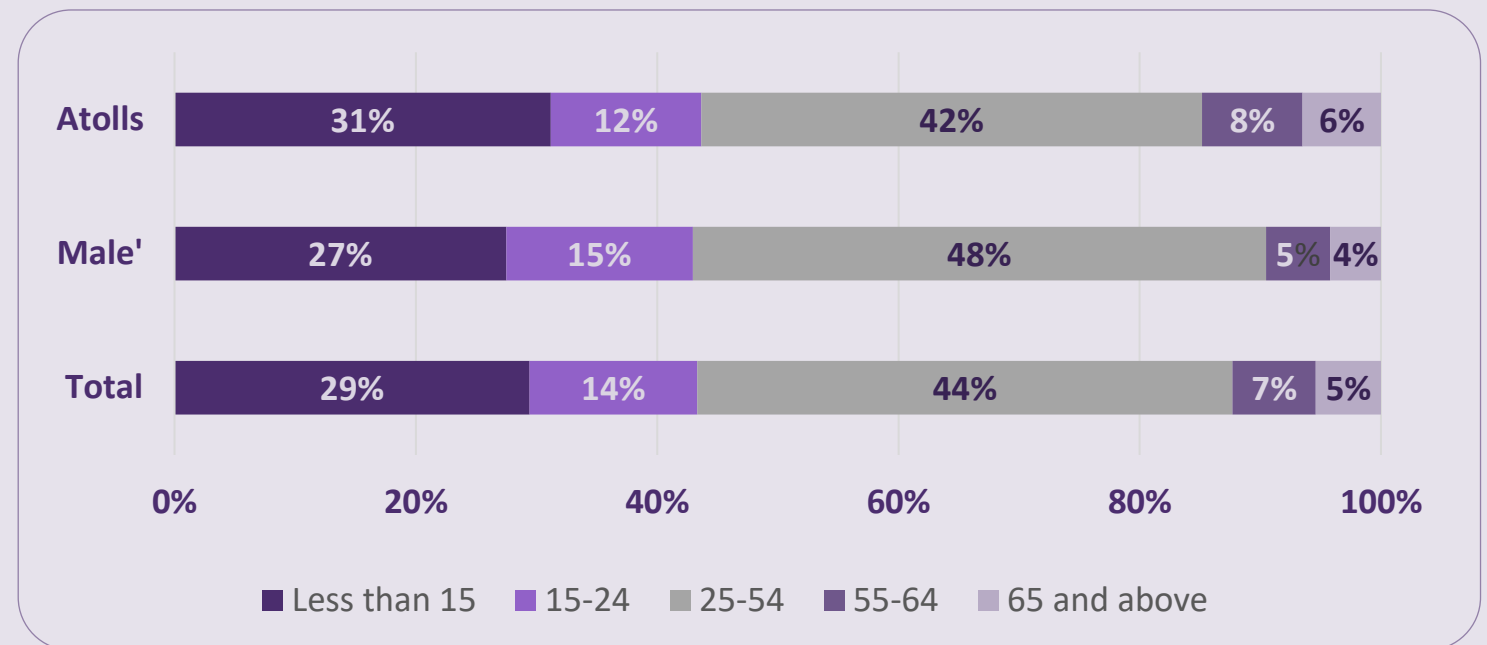
47% lives in Male'



53% lives in Atolls

Majority of the population consist of working age people while children constitute **29%** of the total population. Elderly population is more in the Atolls compared to Male'

Population by broad age group, 2019



Total population

Total Population
451,622



215,544



236,016

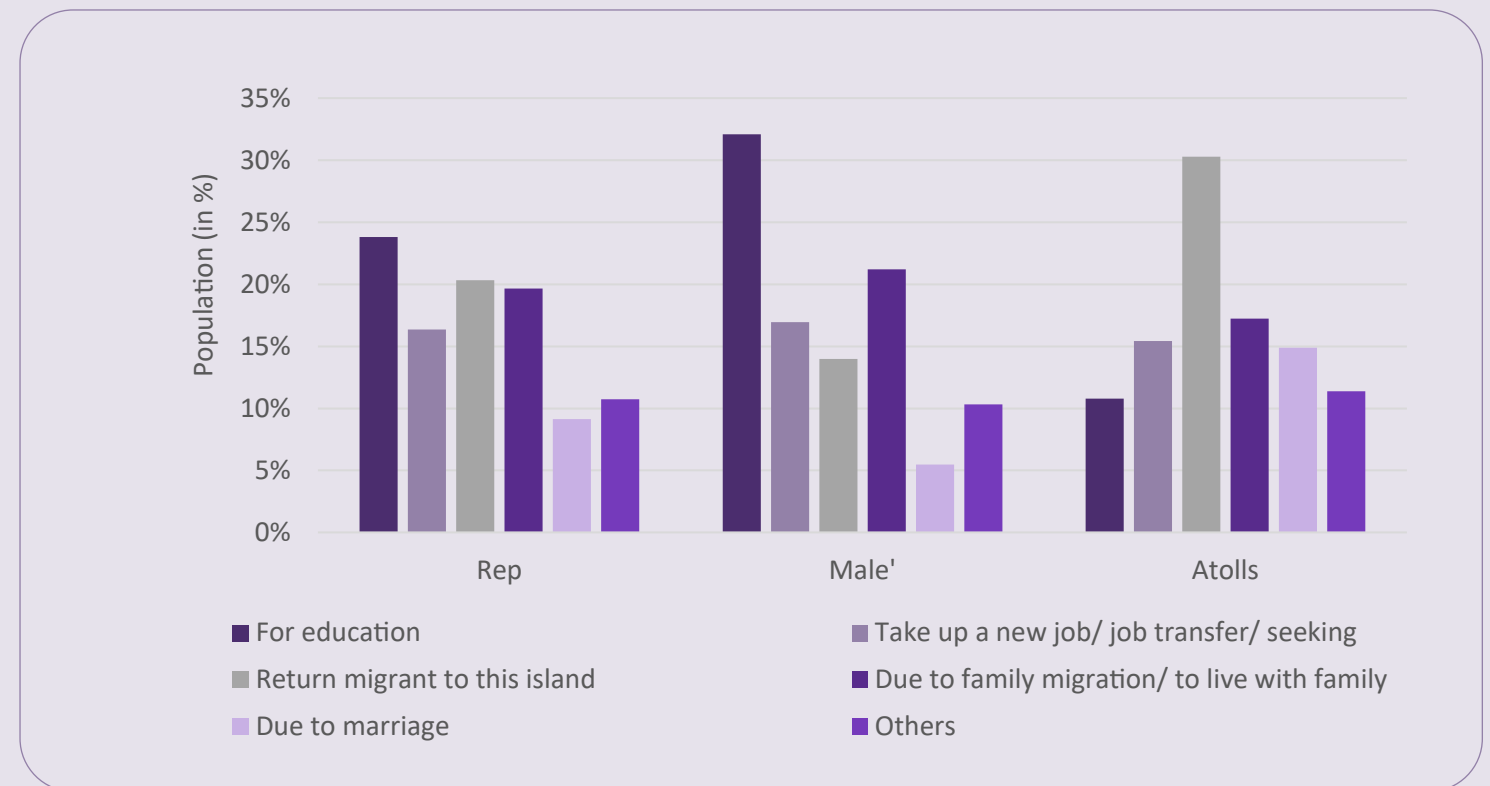
MIGRATION

The results showed working age population of **25-54 years** mainly migrate (**61%** of the migrants). **Education** remains as the main reason for migration in the country.

Main reason for migration to Male' remains as **education** and migration **due to family relocating to Male'**. In the Atolls return migrants are more followed by **change in usual residence due to family migration**.

Women mainly migrate for education while men migrate mainly to **take up a new job/ job transfer or to seek a job**.

Migration by main reason



COMMUTING

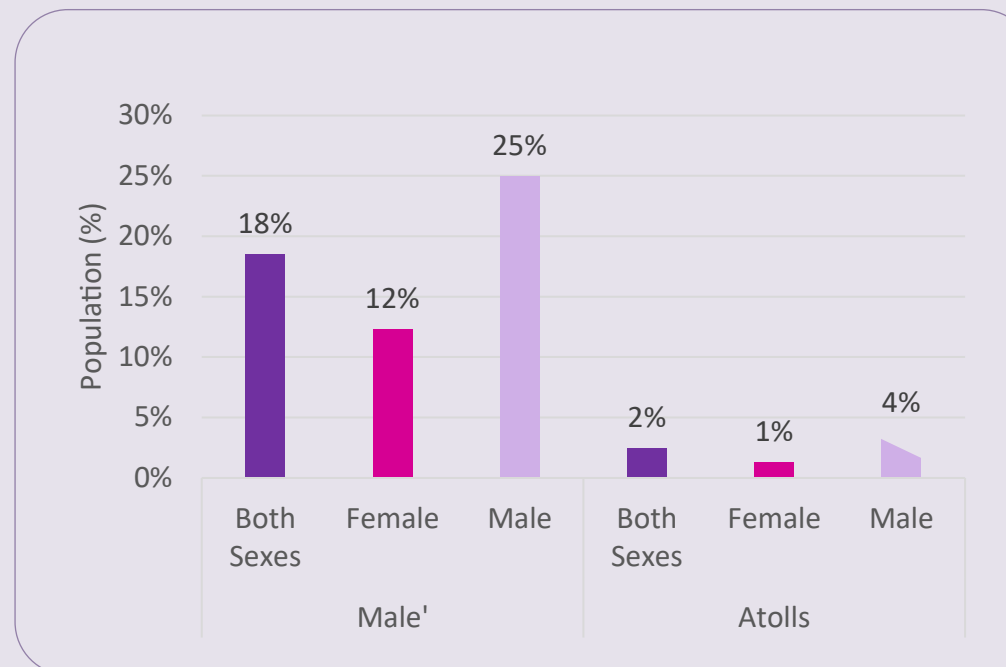
Information on commuting shows that 10% of the population commute daily. While 18% of the population commute in Male', only 2% of the population commuted in the Atolls.

Commuters on average traveled 5 days in a week.

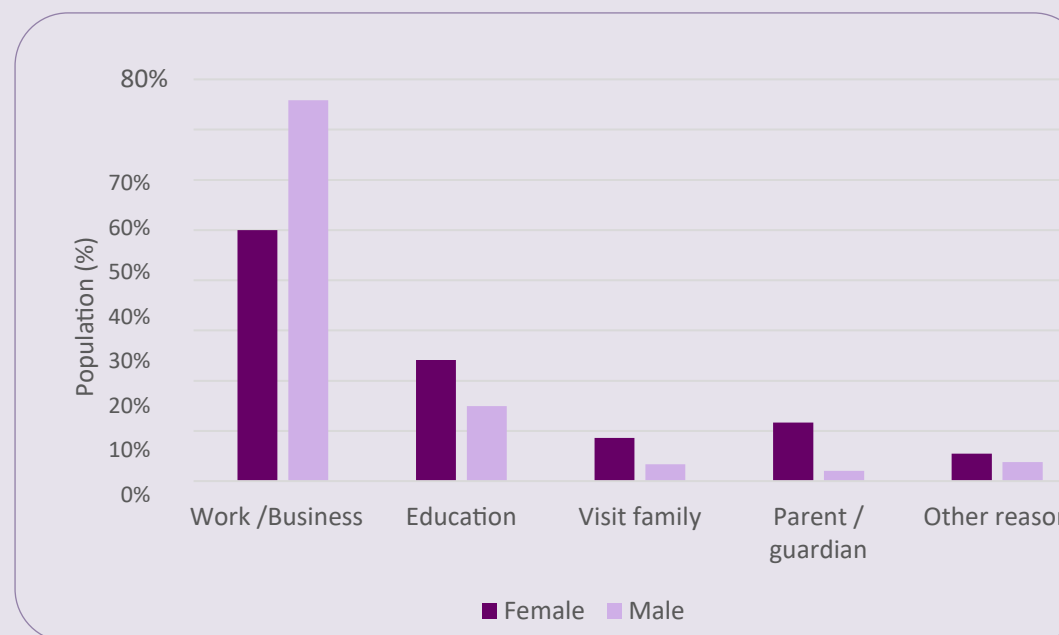
People mainly commute for work/business and education in both Male' and Atolls.

Men mostly commute. Breakdown of commuters showed that both men and women mostly commuted for work/business. Women commuting for education is more than men.

Population who commute daily, 2019



Persons commuting in Male' by sex, 2019



10% of the population are daily commuters. More people commute in Male' region than in the Atolls.

EDUCATION

Literacy in Dhivehi stands at 98%. Dhivehi remains at the same level in Male' and Atoll.

However, literacy rate in English language is much lower at 76%, with a quarter of the population not being able to read and in English with understanding. English literacy is lower in the Atolls compared to Male'. Also, a gender difference is observed in Male' with higher rates for men.

Literacy in English by age group, 2019



Literacy (for 10+ population) is high in the country

EDUCATION

Among children below 19 years, 97% of them have completed primary education while 93% of them have completed secondary education.

The completion rate in higher secondary education is low in the country.

Completion rate

97%
Primary Level
(Grade 1-7)

93%
Secondary Level
(Grade 8 - 10)

32%
Higher Secondary
Level (Grade 11-12)



Majority has attained Primary and Secondary education (for population below 19 yrs)

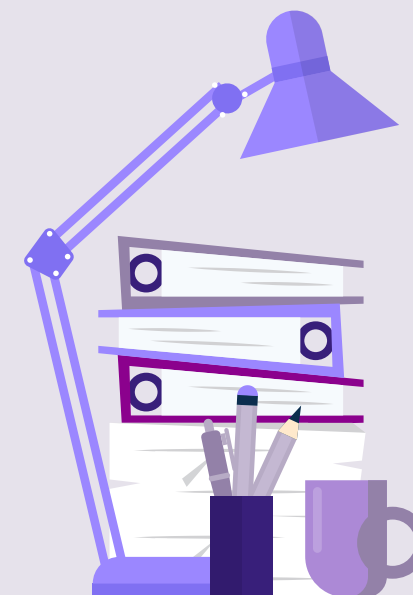
EDUCATION

Among those who have attained degree, majority of them have studied in the field of business, administration and law (46%). This is the same for both men and women. Further to this, 16% have achieved qualification in the area of education.

Among women, 12% of them have achieved qualification in the area of area of health and welfare.

Top field of education among degree holders, 2019

Field of Education for 15+ population with degree and above qualification- top 5 fields	Total	Female	Male
Business, Administration and Law	46%	44%	49%
Education	15%	25%	6%
Health and Welfare	8%	12%	5%
Arts and Humanities	6%	5%	6%
Social Sciences, Journalism and Infor	5%	4%	5%



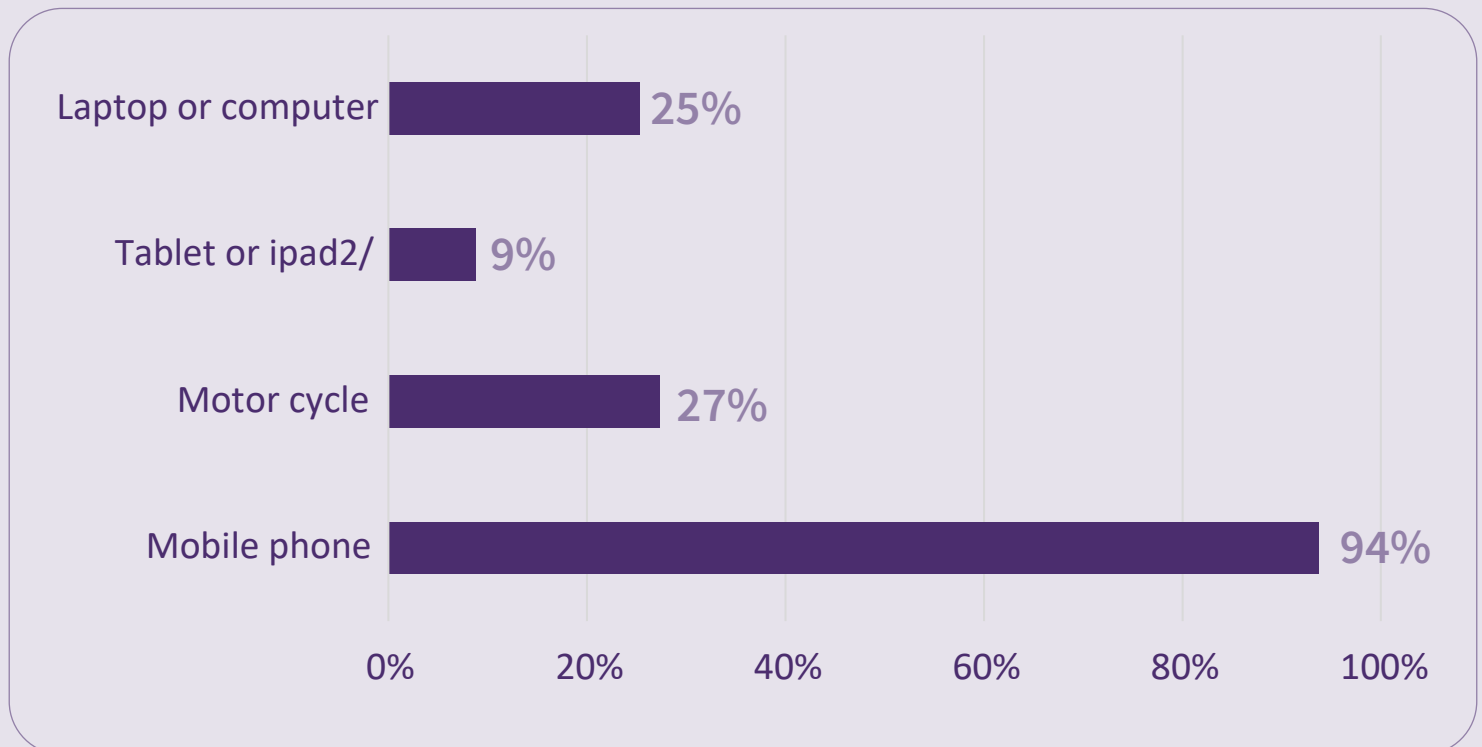
business, administration and law are among the top fields of study in degree

ASSET OWNERSHIP

Among the 15+ population, 94% of them own a mobile phone. Slight gender difference can be seen as 93% of the women own a mobile phone while it is at 95% for men. The ownership of laptop/computer and motor cycle stands around 25-27% with more people owning these goods in Male' than in the Atolls.

Higher proportion of men own motor cycles as well as in motor vehicles, more so in Male'. In Male' higher proportion of men own laptops/ computers as well.

Asset Ownership among 15+ population



Tablet or ipad:
excludes tablets
provided by
school



Most own a
mobile phone

DISABILITY

Disability was measured in HIES 2019, using functional domains or basic actions (seeing, hearing, walking, cognition, self-care and communication) as per the Washington Group (WG) on Disability Statistics. This approach tries to identify persons in the population who are at greater risk than the general population of experiencing limited or restricted participation in society. Each domain uses a severity scale in the response categories (1) No difficulty 2) Yes, some difficulty 3) Yes, a lot of difficulty 4) Cannot do it at all) to capture the full functioning from mild to severe. This aims to identify

the population with functional limitations that have the potential to limit independent participation in society.

For the purpose of reporting and generating internationally comparable data, the WG recommended cut-off has been used to define the population of persons with disabilities as:

‘The sub-population identified as with disability includes those with at least one domain that is coded as a lot of difficulty or cannot do it at all. Close to one in every 10 people experience disability in the country

**Prevalence
of disability
in Maldives
is at 8%**

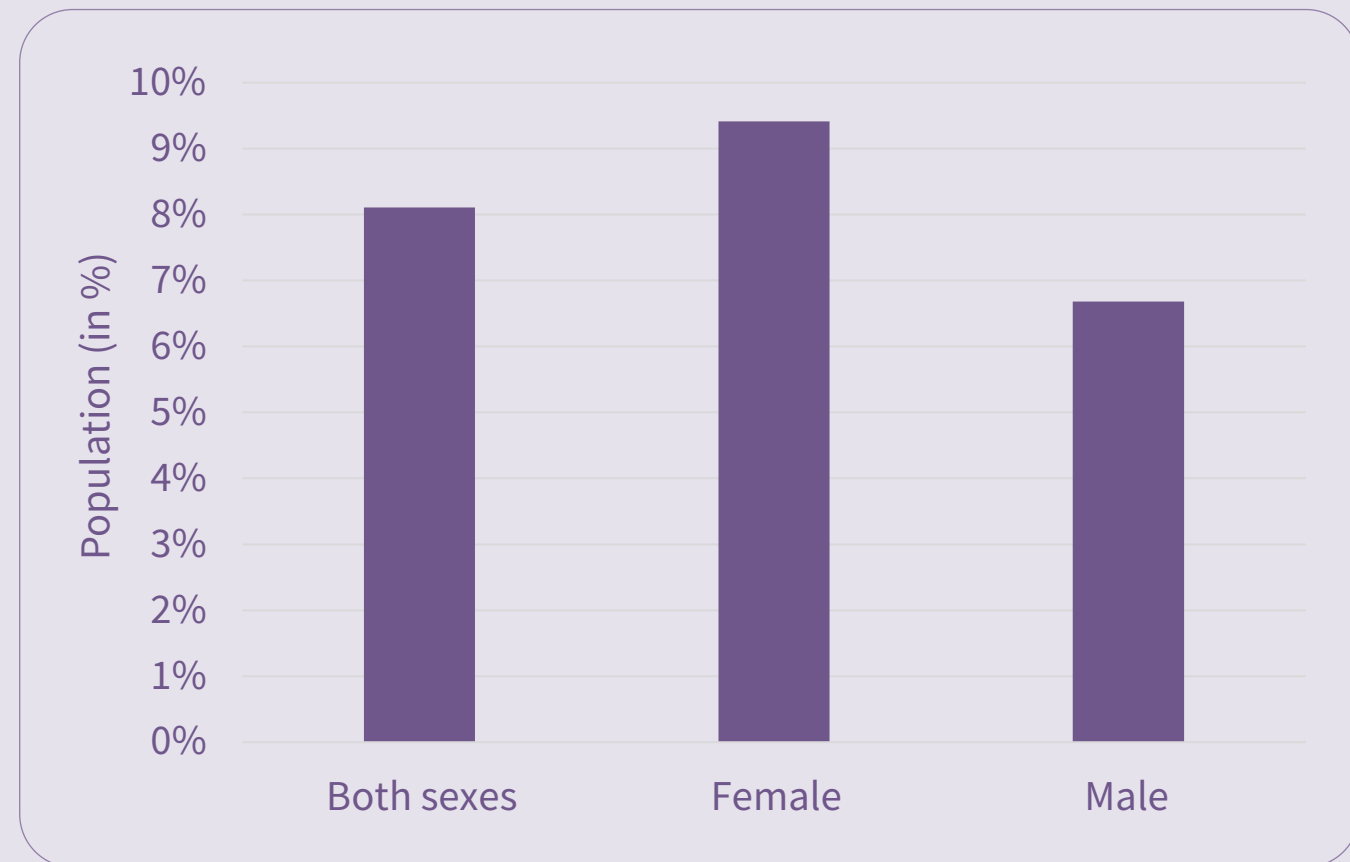
DISABILITY

(8%). Slightly higher proportion prevail in those living in Atolls (9%) than in Male' (7%).

Women (9%) are more likely to report having a disability than men (7%). Similar trend is observed among men and women in Male' and Atolls.

Note: Disability has been measured based on Washington Group (WG) short set of question.

Prevalence of disability in Maldives, 2019



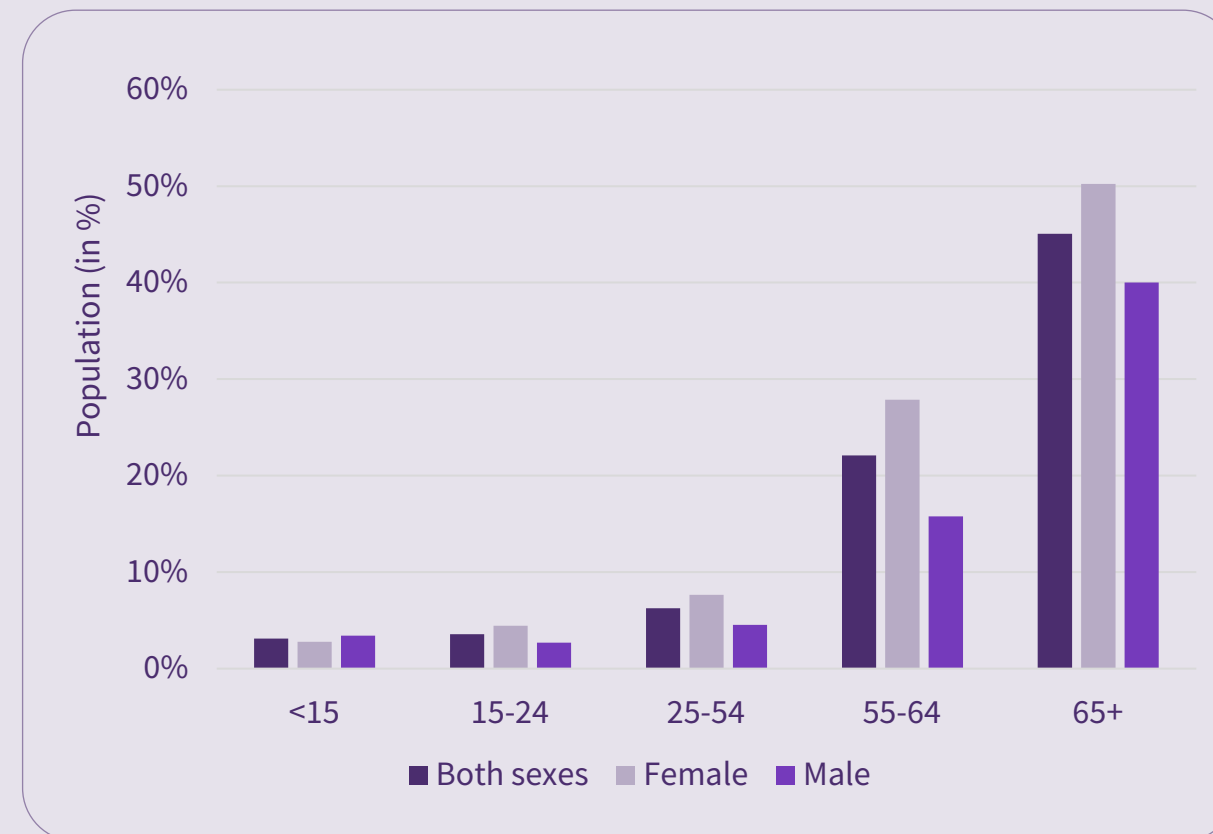
DISABILITY

The prevalence of disability among children less than 15 years is at 3%. Disability increases with ageing with close to half of the elderly population been likely to experience disability condition.

Gender differences is observed as women in each age group tend to have a higher prevalence of disability than men.

Note: Disability has been measured based on Washington Group (WG) short set of question.

Prevalence of disability by age group



Prevalence of disability increases with age

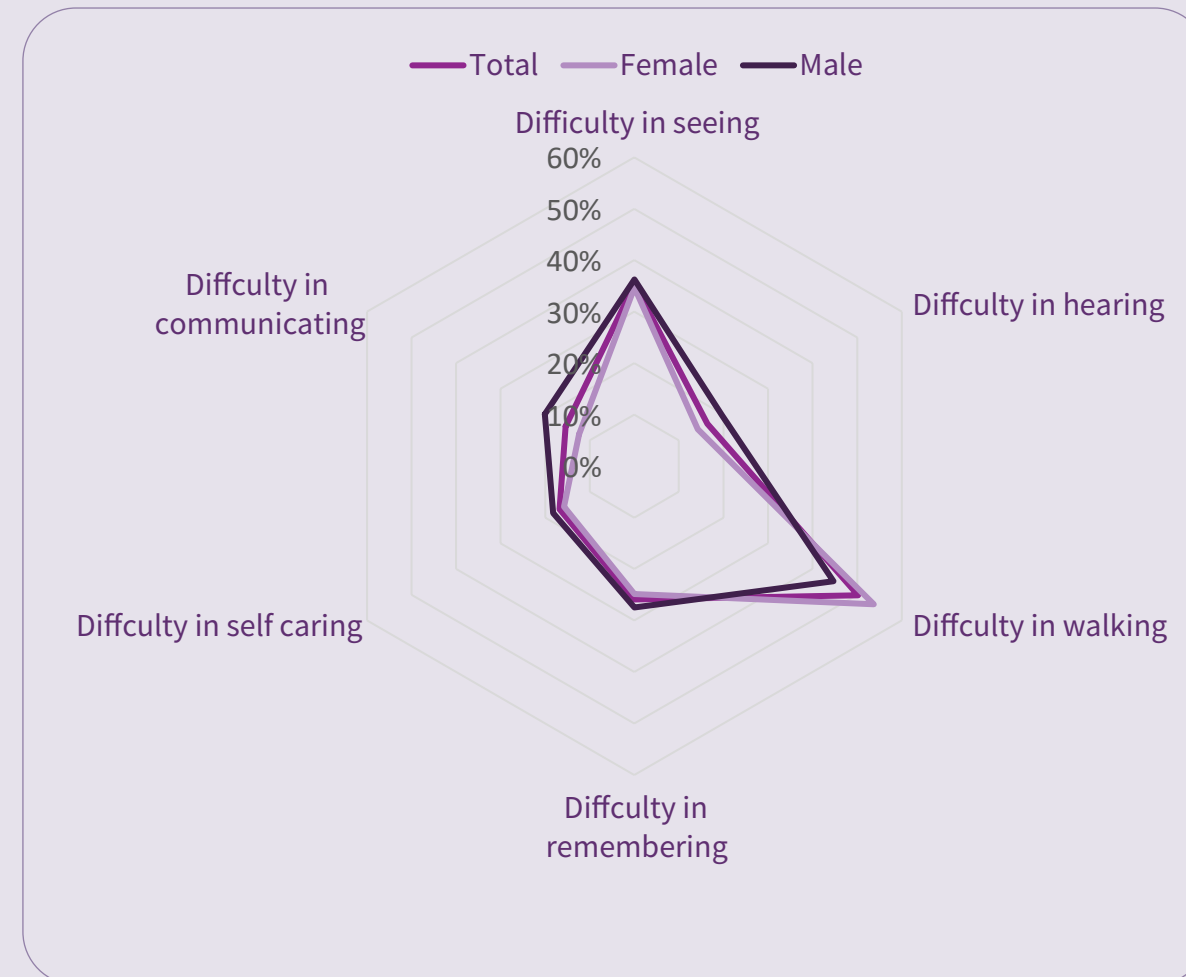
DISABILITY

Among people with disability, majority of them faced difficulty in walking (50%) and seeing (35%). Women tend to have higher disability (54%) in walking compared men (45%).

Women face least difficulty in communicating (12%) and hearing (14%). Men face least difficulty in self-care (18%) Women facing difficulty in self-care was (16%)

Note: Disability has been measured based on Washington Group (WG) short set of question.

Disability by type of disability and sex, Republic



Most face difficulty in walking

CHRONIC DISEASE

With regard to population and health, 19% of the population suffers from chronic illness. The population with chronic disease increases with age with 55% among those 65 years and above. 4% of the children suffers from a chronic illness.

Women tend to have suffer more from chronic illness compared to men. The tend is similar across Male' and Atolls.

Population with chronic disease by broad age group

Population with chronic disease by broad age group	Total	Female	Male
Age: Less than 15 years	4%	4%	5%
Age: 15-17 years	6%	5%	7%
Age: 18-35 years	8%	11%	5%
Age: 36-64 years	30%	36%	23%
Age: 65+ years	73%	77%	69%

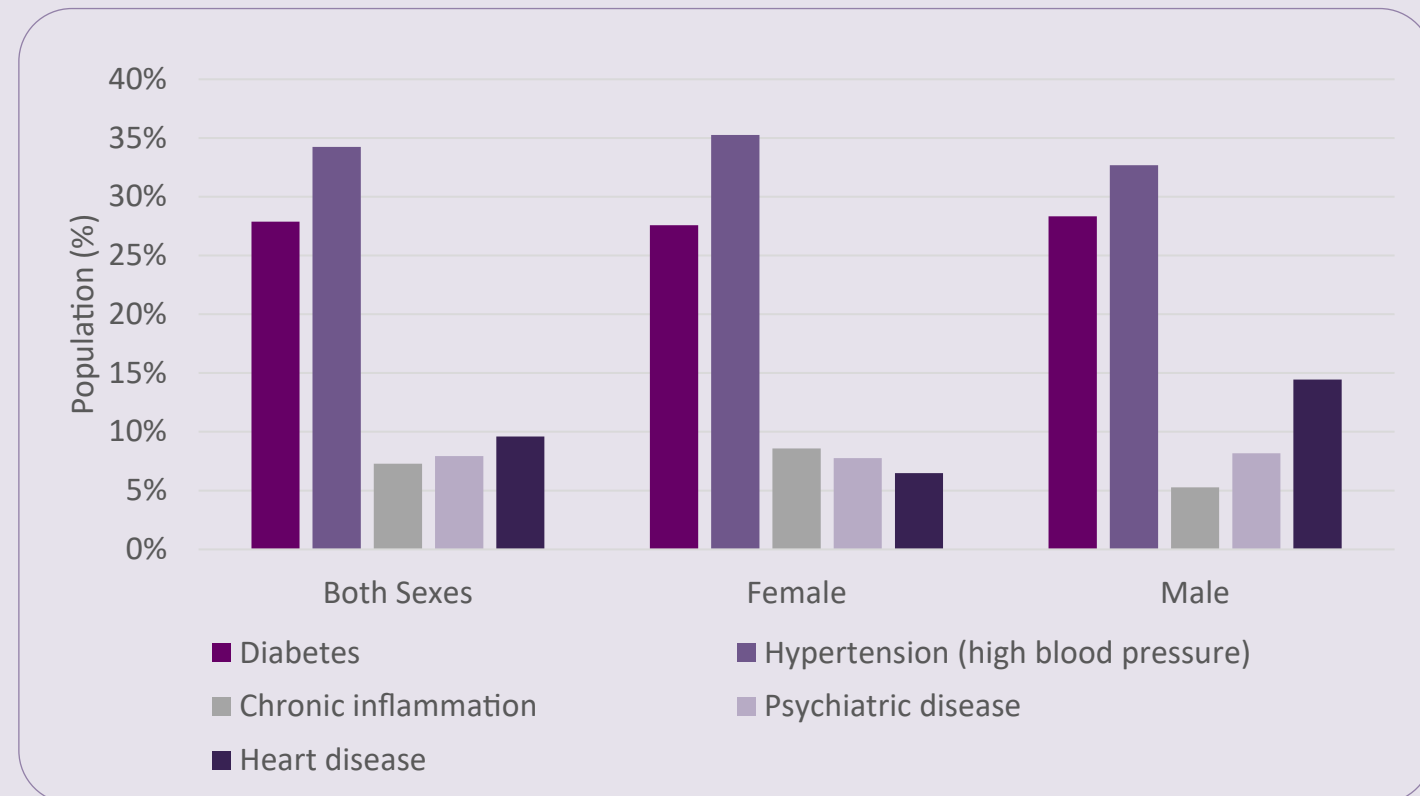
19% of the population reported to suffer from a chronic illness

CHRONIC DISEASE

Majority of those suffering from chronic disease report to have hypertension followed by diabetes. This was similar among men and women. Significant proportion of men also suffered from heart disease.

Breakdown of different health conditions by age group showed that condition is severe among those 36 years and above.

Top chronic diseases by sex, 2019



most of the people with chronic illness suffered from hypertension



National Bureau of Statistics

Ministry of National Planning, Housing & Infrastructure