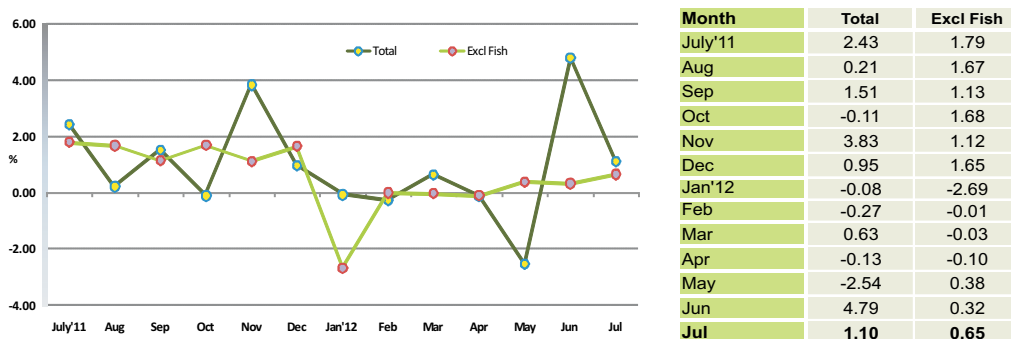


1. Inflation Rate of Nation (Monthly): July 2012 compared to June 2012

To measure month to month inflation, this month's index is compared with the previous month inflation (for e.g: June '12 / May '12). The monthly inflation for June 2012 is 1.10% and 0.65% is the total excluding fish.

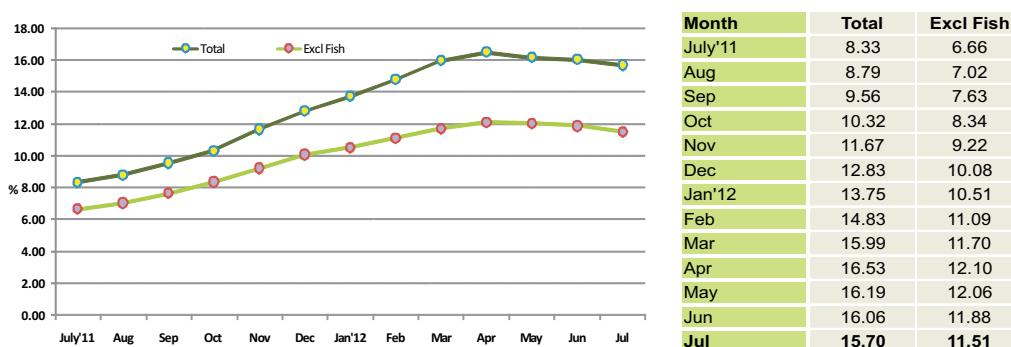
Figure 8. Monthly Inflation Rate of Nation (compared to the previous month)



2. Inflation Rate of Nation (Annualized): August '11 to July '12/August '10 to July '11

The annualized inflation rate for any month compares the average for the 12 monthly indices with that of the preceding 12 months (Eg: August '11 to July '12 /August '10 to July '11). This index shows an annual inflation of 15.70%, and the annualized total excluding fish is 11.51%.

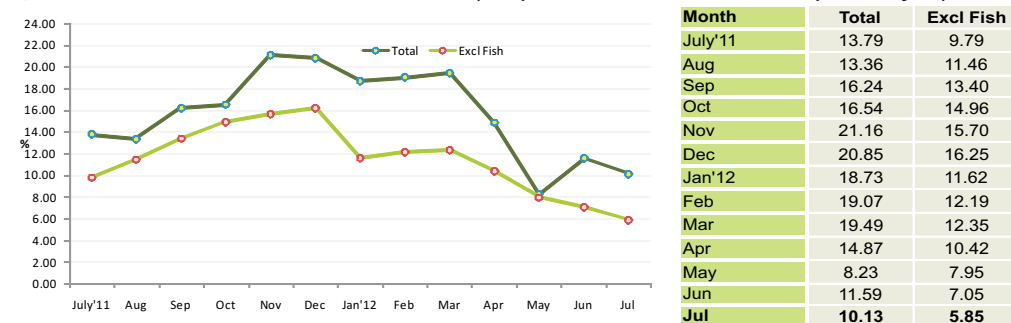
Figure 9. Annualized Inflation Rate of Nation (compared to the past 12 month period)



3. Inflation Rate of Nation (month on month): July'12/ July'11

To measure the month on month change at one point in time, the index of the month is compared with that of the same month in the preceding year (Eg: July '12/July '11). The month on month index for June shows an inflation of 10.13% and the inflation excluding fish is 5.85%.

Figure 10. Month on Month inflation Rate of Nation (compared to the same month of the previous year)



CONSUMER PRICE INDEX - NATION

Department of National Planning
Ministry of Finance and Treasury

July 2012

Consumer Price Index-Nation July 2012

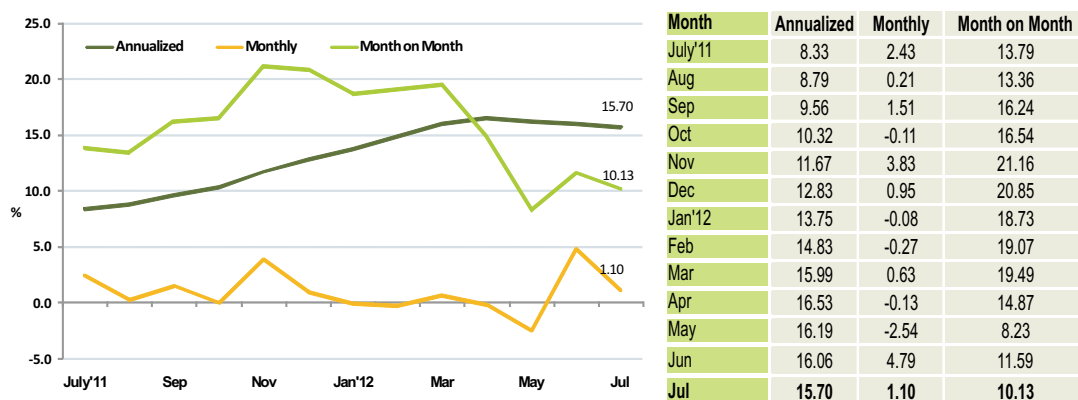
Inflation Rate of Nation

The Consumer Price Index (CPI) for nation rose at an annualized rate of 15.70 percent in July 2012. Fish and tobacco showed the highest inflation followed by hotels, cafes & restaurants categories.

Monthly CPI of July 2012 increased by 1.10 percent compared to June 2012. The inflation was mainly driven from fish and food categories.

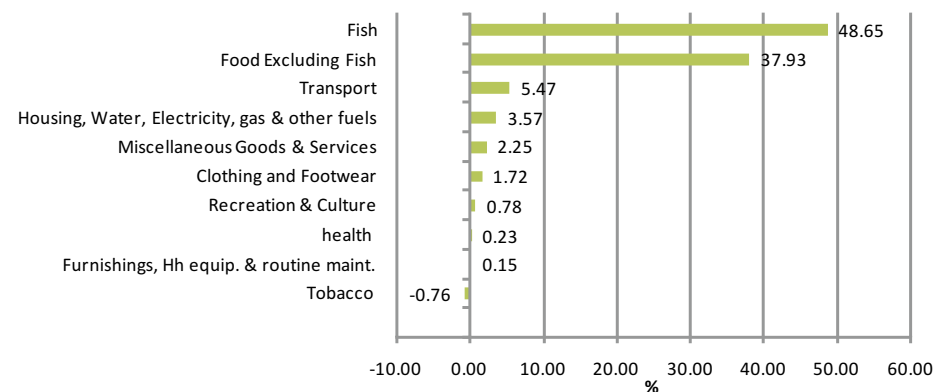
When July 2012 is compared with July 2011, the consumer price index increased by 10.13 percent. Fish category showed the highest inflation followed by tobacco and hotel, cafes & restaurants categories.

Figure 1: Inflation rates of Nation, July-2012



Main contributions to the change in the CPI - Monthly

Figure 2: Sources of changes in July CPI - Monthly



Major contributors to the change in the CPI- Monthly basis

Fish category pulled up the national monthly inflation by 49%, whereas tobacco pulled down the overall monthly inflation by 0.8%. Additionally food and transport categories also pulled up the overall monthly inflation.

While increase in the fish category was the major factor contributing to overall monthly inflation, items which contributed most to this were reef fish for which price increased by 20% while price of skipjack tuna and prices of smoked fish increased by 6% and 2% respectively. Dried fish chips also contributed to this hike. However, other tuna prices decreased by 15% and canned fish prices also declined during the month.

As for the food category, carrot prices increased by 100% in July 2012 when compared to the previous month. Additionally mixed fresh vegetable prices increased by 16% while garlic prices increased by 8%. During the month both egg and tomato prices increased by 7%. In addition to this, items such as onion, lemon, chicken drumstick and ginger prices also went up during the month. This is due to the fact that in ramazan there is a high demand for the food items which in turn drives prices upward. However, other food items such as frozen beef and orange prices decreased during the month.

1. Inflation Rate of Male' & Atolls (Monthly): compared to previous month

The monthly inflation rate for both Male' and Atolls fluctuated over the past one year period. As seen in figure 3; inflation rate in Male' peak 3 times in last one year. First in Nov 2011 followed by January 2012 and again in Jun 2012. The first two peaks were the results of introduction on GST for selected products in October 2011 and renewal of the GST rate from 3% to 6% in January 2012. The last peak is due to the fact that for ramazan there is high demand for the food items which drives up the price of fish and some other food items. In general, the same trend follows in the Atolls except for July 2011 and Jan 2012.

Figure 3. Monthly Inflation Rate, Male' & Atolls, (compared to the previous month)

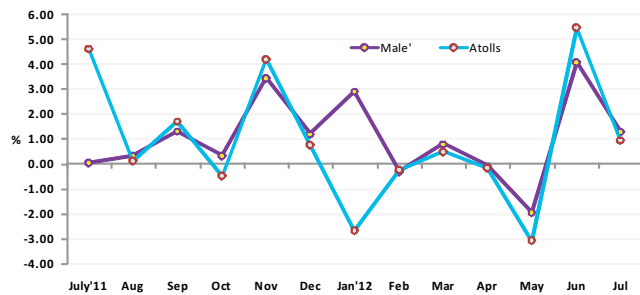


Table 1. Inflation by major categories, National, Male' & Atolls, July 2012 (compared to the previous month)

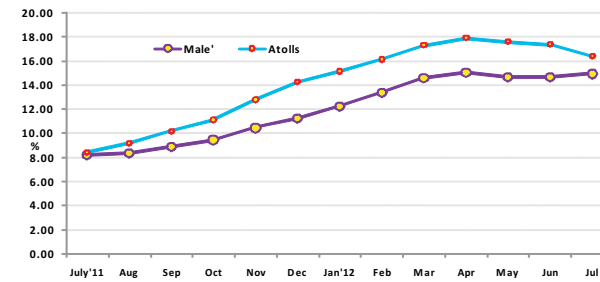
| Categories | Monthly inflation- July 2012 | | |
|--|------------------------------|-------|-------|
| | National | Male' | Atoll |
| Total | 1.10 | 1.28 | 0.93 |
| Total Excluding Fish | 0.65 | 0.89 | 0.42 |
| Food and beverages Excluding Fish | 1.30 | 2.14 | 0.80 |
| Fish | 4.49 | 4.38 | 4.58 |
| Tobacco | -0.24 | 0.07 | -0.39 |
| Clothing & footwear | 0.42 | 0.80 | 0.06 |
| Housing, water, electricity, gas & other fuels | 0.23 | 0.37 | 0.00 |
| Furnishing, household equipments & routine maintenance | 0.04 | 0.04 | 0.02 |
| Health | 0.05 | 0.09 | 0.01 |
| Transport | 1.17 | 1.09 | 1.28 |
| Recreation & culture | 0.31 | 0.72 | 0.04 |
| Miscellaneous goods & services | 0.37 | 0.65 | 0.19 |

The slight decline in Atolls depicted for tobacco was the result of decrease in the price of arecanut as well as cigarette while in the Male' arecanut prices increased.

2. Inflation Rate of Male' & Atolls (Annualized): August '11 to July '12/August'10 to July '11

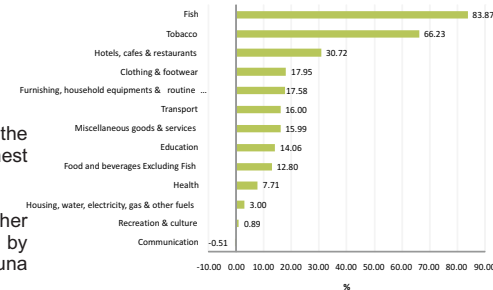
The annualized inflation rate for Male' and Atolls increased over time with atolls inflation rate being highest at the end of April 2012. However, April 2012 onwards the growth rate have slightly slowed down. The annualized inflation rate for Atolls was still higher than that of Male' almost two percentage points in July 2012.

Figure 4: Annualized Inflation Rate, Male' & Atolls (compared to the past 12 month period)



In July 2011 inflation rate in the atolls almost overlap the inflation rate in Male', and rose gradually from August 2011 onwards reaching 16.40% in July 2012 for Atolls while for Male' it stood at 14.94%.

Figure 5: Inflation by major categories in July CPI- Annualized



Annualized inflation rate of the nation was 15.70%. Fish showed the highest inflation with 84% followed by tobacco at 66%. The third highest category was hotels, cafes & restaurants which registered 31%.

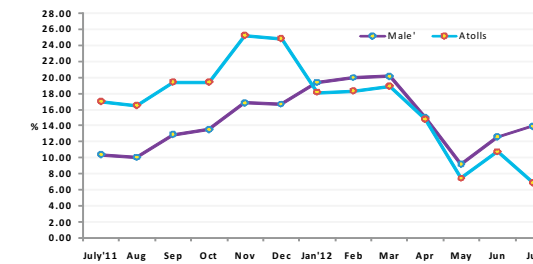
The increase in fish category was due to an increase in the price of other tuna by 223%. Additionally skipjack tuna and reef fish prices went up by 97% and 44% respectively. Smoked fish, dried fish chips and canned tuna fish also increased during this period.

From tobacco category, price of arecanut increased by 71% while cigarette prices also went up to 63%, reflecting the increase in the import duties on cigarette at end of 2011.

As for hotels, cafes & restaurants category, on average prices of breakfast meals went up by 44%. Additionally prices of pizza and restaurant meals went up by 26% and 22% respectively.

3. Inflation Rate of Male' & Atolls (month on month): July'12/July'11

Figure 6. Month on Month inflation Rate, Male' & Atolls (compared to the same month of the previous year)



Inflation rates in the atolls were higher for the period July to December 2011 than that of Male' as seen in figure 6. The change in trend following January 2012 may be attributed to the fact that health related expenses in the atolls is largely covered under the universal health care program, while in Male' the clinics were not.

March 2012 onwards the month on month inflation rates for both Male' and Atolls slowed down and picked up again in June 2012 and increased further more for Male' in July 2012.

Figure 7. Inflation by major categories in May CPI- Month on month



As shown in figure 7, when July 2012 was compared to the same period of previous year, all the categories recorded an inflation with the exception of communication category. Fish showed the highest inflation with 56% followed by tobacco 54% and hotels, cafes & restaurants which registered 25% inflation.

The items which contributed most to the fish category were other tuna fish for which price rose by 151%. Additionally, skipjack tuna and smoked fish prices went up by 64% and 36% respectively. However, dried fish chips and reef fish prices decreased by 24% and 7% respectively when two points of time were compared.

As for tobacco category, on average cigarette prices increased by 70% due to increase in import duties of tobacco products on 1 December 2011. Additionally arecanut prices went up by 11%, when compared to July 2011.

Annex 1: Average monthly Prices of selected Items, CPI National, Male' & Atolls, Jun 2012

| Description | Specification | Unit | National - Monthly | | | Male' - Monthly | | | Atolls - Monthly | | |
|------------------------|-------------------------------------|--------------------|--------------------|-----------|----------------------|-----------------|-----------|----------------------|------------------|-----------|----------------------|
| | | | Average Price | | % Chn | Average Price | | % Chn | Average Price | | % Chn |
| | | | Jun 2012 | July 2012 | Jun 2012 / July 2012 | Jun 2012 | July 2012 | Jun 2012 / July 2012 | Jun 2012 | July 2012 | Jun 2012 / July 2012 |
| Food | | | | | | | | | | | |
| Apple | Apple | 1 Piece | 5.63 | 5.51 | -2.16 | 5.43 | 5.26 | -3.09 | 5.82 | 5.75 | -1.29 |
| Aracanut | Raw Aracanut / Uncut / Loose | 1 kg | 99.41 | 99.23 | -0.19 | 88.19 | 88.64 | 0.51 | 110.64 | 109.81 | -0.75 |
| Baby food - cereal | Nestum / Wheat & Honey | 250 Gram / Tin | 49.78 | 51.55 | 3.54 | 49.50 | 52.51 | 6.07 | 50.07 | 50.59 | 1.04 |
| Baby food - cereal | Promina / Banana | 250 Gram / Packet | 21.46 | 21.52 | 0.28 | 21.46 | 21.36 | -0.47 | 21.47 | 21.69 | 1.03 |
| Baby food - fruit | Purity / Fruit / Second food | 200ml, Bottle | - | - | - | 25.57 | 27.17 | 6.27 | - | - | - |
| Baby milk powder | Lactogen | 450 Gram, tin | 75.86 | 76.42 | 0.74 | 73.55 | 74.68 | 1.53 | 78.16 | 78.16 | 0.00 |
| Baby milk powder | Anface | 450 Gram / Tin | 168.20 | 164.67 | -2.10 | 167.41 | 160.34 | -4.22 | 169.00 | 169.00 | 0.00 |
| Baby milk powder | S.M.A / Progress | 450 Gram / Tin | 125.99 | 125.08 | -0.72 | 123.01 | 121.20 | -1.47 | 128.96 | 128.96 | 0.00 |
| Banana | Bonthiraiy | 1 Piece | 2.29 | 2.41 | 4.96 | 2.52 | 2.75 | 9.01 | 2.06 | 2.06 | 0.00 |
| Beans | Fresh Beans | 1 kg | 53.19 | 54.19 | 1.88 | 56.38 | 58.37 | 3.54 | 50.00 | 50.00 | 0.00 |
| Biscuits | Cream Cracker, Khong Guan | 200 gram, packet | 12.93 | 13.15 | 1.70 | 12.84 | 13.20 | 2.82 | 13.03 | 13.11 | 0.59 |
| Biscuits | Marie Biscuit | 400 Gram | 23.11 | 23.05 | -0.27 | 21.72 | 21.50 | -1.02 | 24.50 | 24.60 | 0.40 |
| Bread | Large | 1 Piece | 19.90 | 19.82 | -0.39 | 23.25 | 23.25 | 0.00 | 16.55 | 16.39 | -0.93 |
| Bread spread | Chocolate Crumpy | 225 Gram | 46.63 | 46.44 | -0.41 | 43.85 | 43.47 | -0.88 | 49.41 | 49.41 | 0.00 |
| Cabbage | Fresh Cabbage | 1 kg | 40.01 | 39.69 | -0.80 | 38.99 | 37.50 | -3.81 | 41.03 | 41.87 | 2.06 |
| Canned baked beans | Baked Beans / Canned | 400 Gram | 14.25 | 14.59 | 2.39 | 14.02 | 14.58 | 3.97 | 14.47 | 14.59 | 0.85 |
| Canned green peas | Green peas / Processed peas | 440 Gram | 10.83 | 10.93 | 0.96 | 11.66 | 11.87 | 1.78 | 10.00 | 10.00 | 0.00 |
| Canned mixed fruits | Canned Mixed Fruit / Small | 398 Gram | 28.06 | 28.11 | 0.20 | 24.84 | 24.95 | 0.45 | 31.27 | 31.27 | 0.00 |
| Canned pine Apple | Canned Pine Apple | 567 Gram | 23.36 | 23.58 | 0.91 | 22.67 | 23.14 | 2.05 | 24.05 | 24.02 | -0.16 |
| Carrot | Fresh Carrot | 1 kg | 29.18 | 58.37 | 100.07 | 23.35 | 64.41 | 175.82 | 35.00 | 52.33 | 49.52 |
| Chicken drumsticks | Chicken drumstick | 1 kg | 67.23 | 71.11 | 5.77 | 67.23 | 71.11 | 5.77 | - | - | - |
| Chicken sausage | Chicken Sausage / Packed | 340 Gram | 22.84 | 23.59 | 3.26 | 20.19 | 21.18 | 4.89 | 25.50 | 26.00 | 1.96 |
| Chilli powder | Chillie Powder / Packed Local | 50 Gram | 7.78 | 7.88 | 1.21 | 6.90 | 7.16 | 3.72 | 8.67 | 8.60 | -0.78 |
| Cigarette | Marlboro | 20 Piece / 1 Pack | 39.29 | 39.19 | -0.24 | 38.66 | 38.66 | 0.00 | 39.92 | 39.73 | -0.48 |
| Coconut | Medium size / Coconut | 1 Piece | 4.15 | 4.32 | 4.01 | 4.15 | 4.32 | 4.01 | - | - | - |
| Coffee | Nescafe, Cafe' soluble coffee | 50 Gram | 42.15 | 41.04 | -2.64 | 41.62 | 40.22 | -3.37 | 42.68 | 41.87 | -1.92 |
| Coke | Dubai coke / Canned | 300 Ml | 11.26 | 11.43 | 1.54 | 10.77 | 11.09 | 3.04 | 11.75 | 11.77 | 0.16 |
| Coke | Coca Cola / Large Bottle | 1500 Ml | 31.04 | 30.84 | -0.65 | 30.27 | 29.52 | -2.49 | 31.80 | 32.15 | 1.10 |
| Condensed milk | Double Peach | 397Gram, tin | 15.86 | 16.13 | 1.72 | 15.57 | 16.12 | 3.50 | 16.14 | 16.14 | 0.00 |
| Condensed milk | Cow Bell | 397 Gram / Tin | 15.58 | 15.73 | 0.93 | 15.20 | 15.49 | 1.90 | 15.97 | 15.97 | 0.00 |
| Cooking oil | Bemoli Oil | 2 Ltr | 62.20 | 64.06 | 2.98 | 59.62 | 62.51 | 4.85 | 64.79 | 65.61 | 1.27 |
| Cooking oil | Sun Flower Oil | 2 Ltr | 93.29 | 91.95 | -1.44 | 91.45 | 88.76 | -2.94 | 95.14 | 95.14 | 0.00 |
| Corn flake | Kellogg's / Wheat and Honey | 300 Gram | 40.95 | 41.15 | 0.49 | 46.90 | 47.31 | 0.86 | 35.00 | 35.00 | 0.00 |
| Cucumber | Fresh Cucumber | 1 kg | 28.71 | 28.85 | 0.49 | 34.02 | 34.96 | 2.78 | 23.41 | 22.74 | -2.84 |
| Curry powder | Curry Powder / Antelope brand | 340 Gram | 41.44 | 41.95 | 1.25 | 41.98 | 42.03 | 0.13 | 40.90 | 41.87 | 2.39 |
| Curry powder | Fish curry powder / Packed | 50 Gram | 7.43 | 7.52 | 1.24 | 6.97 | 7.25 | 4.10 | 7.89 | 7.79 | -1.29 |
| Curry powder | Chicken curry powder / Packed | 50 Gram | 7.63 | 7.69 | 0.74 | 7.01 | 7.12 | 1.62 | 8.26 | 8.26 | 0.00 |
| Dairy milk | Dutch Lady / Milk Pack / Small | 250 Ml | 10.22 | 10.21 | -0.11 | 9.79 | 9.76 | -0.22 | 10.65 | 10.65 | 0.00 |
| Dates | Dates without nuts | 200 Gram / pack | - | - | - | 36.77 | 31.30 | -14.88 | - | - | - |
| Egg | Chicken egg / Imported | 1 Piece | 1.81 | 1.94 | 7.29 | 1.75 | 1.87 | 6.96 | 1.87 | 2.02 | 7.60 |
| Flour | Ordinary Flour / loose | 1 kg | 4.31 | 4.32 | 0.19 | 3.84 | 3.86 | 0.52 | 4.78 | 4.78 | -0.07 |
| Frozen beef | Frozen Beef | 1 kg | 61.79 | 49.54 | -19.83 | 68.07 | 70.32 | 3.31 | 55.52 | 28.76 | -48.20 |
| Frozen chicken | Frozen chicken / Whole | 1 kg | 51.59 | 50.60 | -1.92 | 46.85 | 45.24 | -3.44 | 56.33 | 55.96 | -0.66 |
| Garlic | Garlic | 100 Gram | 4.13 | 4.48 | 8.40 | 3.41 | 3.81 | 11.51 | 4.85 | 5.15 | 6.21 |
| Ginger | Ginger | 100 Gram | 4.95 | 5.22 | 5.31 | 3.62 | 3.70 | 2.09 | 6.28 | 6.73 | 7.17 |
| Githeyo Mirus | Dhivehi mirus | 1 Piece | 3.23 | 3.32 | 2.55 | 3.18 | 3.31 | 4.12 | 3.29 | 3.33 | 1.04 |
| Green chilli | Green Chilli / Imported | 100 Gram | 21.18 | 20.75 | -2.01 | 10.45 | 9.60 | -8.15 | 31.90 | 31.90 | 0.00 |
| Jam | Tova Brand / Bottle | 450 Gram | 25.60 | 25.72 | 0.47 | 24.96 | 24.82 | -0.54 | 26.24 | 26.62 | 1.43 |
| Juice-Sun quick | Sun quick / Orange Juice / Bottle | 840 Ml | 78.45 | 80.06 | 2.05 | 78.40 | 80.65 | 2.87 | 78.50 | 79.47 | 1.23 |
| Lemon | Imported lemon | 1 Piece | 2.19 | 2.33 | 6.36 | 2.27 | 2.34 | 3.22 | 2.11 | 2.31 | 9.74 |
| Margarine | Daisy brand tub / Small | 250 Gram | 27.55 | 27.42 | -0.46 | 26.84 | 26.45 | -1.46 | 28.25 | 28.39 | 0.49 |
| Milk powder | Coast | 1800 Gram, tin | 253.10 | 254.67 | 0.62 | 236.97 | 240.85 | 1.64 | 269.23 | 268.49 | -0.28 |
| Milk powder | Anchor Milk | 1800 Gram / Tin | 260.84 | 259.05 | -0.68 | 280.48 | 276.91 | -1.27 | 241.19 | 241.19 | 0.00 |
| Milk powder | Nido | 1800 Gram / Tin | 267.33 | 265.45 | -0.70 | 268.22 | 264.28 | -1.47 | 266.43 | 266.62 | 0.07 |
| Mixed fresh vegetables | Mixed Vegetables | 1 kg | 41.94 | 48.83 | 16.43 | 43.27 | 53.25 | 23.06 | 40.60 | 44.41 | 9.38 |
| Noodles | Mamee Noodles / Packet | 85 Gram | 4.53 | 4.53 | 0.07 | 4.14 | 4.14 | 0.05 | 4.92 | 4.92 | 0.08 |
| Onion | Imported Onion | 1 kg | 11.70 | 12.45 | 6.39 | 12.42 | 12.35 | -0.53 | 10.99 | 12.55 | 14.20 |
| Orange | Fresh Orange | 1 Piece | 5.03 | 4.62 | -8.16 | 4.39 | 4.01 | -8.59 | 5.68 | 5.24 | -7.82 |
| Potato | Imported Potato | 1 kg | 13.56 | 14.21 | 4.85 | 12.56 | 12.95 | 3.14 | 14.56 | 15.48 | 6.33 |
| Rice | Ordinary Rice / loose | 1 kg | 5.06 | 5.04 | -0.44 | 4.62 | 4.56 | -1.41 | 5.51 | 5.53 | 0.38 |
| Rice-Basmati | Basmati Rice / Pre Packed | 1 kg | 29.18 | 29.15 | -0.11 | 28.95 | 29.00 | 0.17 | 29.41 | 29.30 | -0.39 |
| Salt | Fine Salt / Packed | 500 Gram | 5.36 | 5.44 | 1.36 | 5.22 | 5.25 | 0.53 | 5.51 | 5.62 | 2.14 |
| Sauce | Tomato Sauce / life Brand | 320 Gram / Bottled | 14.32 | 14.00 | -2.19 | 15.65 | 14.91 | -4.76 | 12.98 | 13.09 | 0.91 |
| Sauce | Chillie Sauce / life Brand | 335 Gram / Bottled | 15.38 | 15.31 | -0.49 | 16.63 | 16.56 | -0.45 | 14.13 | 14.05 | -0.54 |
| Sauce | Chillie & Garlic Sauce / life Brand | 320 Gram / Bottled | 15.89 | 15.87 | -0.15 | 17.47 | 17.24 | -1.29 | 14.31 | 14.49 | 1.24 |
| Tomato | Fresh Tomato | 1Kg | 34.87 | 37.20 | 6.70 | 40.75 | 40.00 | -1.84 | 28.98 | 34.41 | 18.71 |

| Description | Specification | Unit | National - Monthly | | | Male' - Monthly | | | Atolls - Monthly | | |
|------------------------------|------------------------------------|--------------------|--------------------|-----------|----------------------|-----------------|-----------|----------------------|------------------|-----------|----------------------|
| | | | Average Price | | % Chn | Average Price | | % Chn | Average Price | | % Chn |
| | | | Jun 2012 | July 2012 | Jun 2012 / July 2012 | Jun 2012 | July 2012 | Jun 2012 / July 2012 | Jun 2012 | July 2012 | Jun 2012 / July 2012 |
| Tomato paste | Tomato Paste / Small can | 70 Gram | 3.05 | 2.95 | -3.15 | 3.07 | 2.88 | -6.41 | 3.02 | 3.03 | 0.16 |
| Watermelon | Water melon (fresh Locally pr 1 kg | | - | - | - | 24.86 | 20.73 | -16.61 | - | - | - |
| Fish | | | | | | | | | | | |
| Canned fish in brine | Felivaru Canned Fish / Chunk | 185 Gram | 18.14 | 18.17 | 0.15 | 17.63 | 17.59 | -0.22 | 18.66 | 18.75 | 0.51 |
| Canned fish in oil | Felivaru canned fish / Chunk i | 185 Gram | 19.21 | 19.19 | -0.09 | 18.68 | 18.64 | -0.19 | 19.74 | 19.74 | 0.00 |
| Other tuna | Other Tuna / Latti | 1 kg | 114.55 | 97.79 | -14.63 | 114.55 | 97.79 | -14.63 | - | - | - |
| Reef fish | Reef Fish / Maaniya mas | 1 kg | 29.19 | 35.17 | 20.49 | 29.19 | 35.17 | 20.49 | - | - | - |
| Skipjack tuna | Godha / Kalhubilamas | 1 kg | 108.00 | 114.73 | 6.23 | 108.00 | 114.73 | 6.23 | - | - | - |
| Smoked fish | Smoked Fish (Valhoamas) / Lc | 1 kg | 149.01 | 150.72 | 1.15 | 148.01 | 151.43 | 2.31 | 150.00 | 150.00 | 0.00 |
| Clothing and Footwear | | | | | | | | | | | |
| Men's jeans | Mend's Jeans / Most Sold Ma | 1 Piece | 273.14 | 274.67 | 0.56 | 309.93 | 313.00 | 0.99 | 236.35 | 236.35 | 0.00 |
| Men's shirt | Men T-Shirt / Most Sold mat | 1 Piece | 214.41 | 215.97 | 0.73 | 238.50 | 238.50 | 0.00 | 190.32 | 193.44 | 1.64 |
| Men's trousers | Men's Trousers / Long | 1 Piece | 248.24 | 252.87 | 1.86 | 245.33 | 252.14 | 2.77 | 251.15 | 253.60 | 0.97 |
| School shoes | School Shoes/ Girl / Most recr | 1 Pair | 182.75 | 186.07 | 1.81 | 188.67 | 193.33 | 2.47 | 176.83 | 178.80 | 1.11 |
| Sport shoes | Diadora / Indoor tennis shoes | 1 Pair | 401.04 | 397.10 | -0.98 | 365.70 | 365.70 | 0.00 | 436.38 | 428.50 | -1.80 |
| Women's jeans | Women's Jeans / Fade | 1 Piece | 214.69 | 219.48 | 2.23 | 227.67 | 236.67 | 3.95 | 201.71 | 202.30 | 0.29 |
| Women's sandals | Casual (home-wear) | 1 Piece | 174.72 | 173.39 | -0.76 | 205.57 | 200.33 | -2.55 | 143.87 | 146.45 | 1.80 |
| Women's t-shirt | Ladies T - shirt / Most sold Br | 1 Piece | 173.24 | 172.88 | -0.21 | 199.13 | 199.13 | 0.00 | 147.35 | 146.62 | -0.49 |
| Housing | | | | | | | | | | | |
| Cement | Cement bag | 50 kg | 122.30 | 124.44 | 1.75 | 122.00 | 122.00 | 0.00 | 122.60 | 126.89 | 3.50 |
| Fan | Electric fan (Ceiling) / Usha Br | 1 Piece | 497.24 | 500.66 | 0.69 | 441.74 | 441.74 | 0.00 | 552.74 | 559.58 | 1.24 |
| Glasses | Plain Glass / Medium Size | 1 Piece | 8.43 | 8.18 | -2.91 | 7.62 | 7.13 | -6.43 | 9.23 | 9.23 | 0.00 |
| Insecticides | Insecticides / Mosfly Brand / | : 400 Ml | 44.61 | 44.81 | 0.45 | 43.41 | 43.81 | 0.93 | 45.81 | 45.81 | 0.00 |
| Light tube | Fluorescent tube / 2 feet / Wl | 1 Piece | 15.27 | 16.50 | 8.04 | 15.97 | 18.42 | 15.38 | 14.57 | 14.57 | 0.00 |
| Linoleum | Aadhaige Tharafaalu (linoleur | 1 Feet | 14.22 | 14.55 | 2.36 | 16.43 | 17.10 | 4.08 | 12.00 | 12.00 | 0.00 |
| Plywood | 3 mm | 1 Piece | 140.71 | 140.19 | -0.37 | 167.59 | 166.56 | -0.61 | 113.83 | 113.83 | 0.00 |
| Washing machine | Washing Machine / Super ger | 1 Piece | 4573.38 | 4578.63 | 0.11 | 5692.50 | 5692.50 | 0.00 | 3454.25 | 3464.75 | 0.30 |
| Washing power | Soklin Brand Washing powder | 1 Kg | 30.75 | 30.59 | -0.50 | 23.47 | 23.10 | -1.58 | 38.02 | 38.09 | 0.16 |
| Washing power | B 29 Brand Washing powder f | 1 Kg | 28.14 | 27.91 | -0.84 | 23.78 | 23.36 | -1.79 | 32.50 | 32.45 | -0.14 |
| Health | | | | | | | | | | | |
| Diegen | Diegen / 200 ml | 1 Bottle | 36.13 | 35.65 | -1.32 | 39.29 | 38.33 | -2.43 | 32.97 | 32.97 | 0.00 |
| Helibo orange | Helibo Orange / 200 ml | 1 Bottle | 53.45 | 53.37 | -0.16 | 58.75 | 58.33 | -0.71 | 48.16 | 48.40 | 0.51 |
| Panadol | Panadol / 500 mg | 1 Tablet | 0.46 | 0.46 | 0.37 | 0.50 | 0.50 | 0.67 | 0.41 | 0.41 | 0.00 |
| Vicks balm | Vicks Balm / 19 Gram | 1 Bottle | 14.39 | 14.53 | 1.01 | 14.83 | 15.00 | 1.12 | 13.94 | 14.06 | 0.88 |
| Transport | | | | | | | | | | | |
| Domestic airfare | Male'/Hanimadhoo/Male' | Per Person / Adult | 2650.00 | 2850.00 | 7.55 | 2650.00 | 2850.00 | 7.55 | - | - | - |
| International airfare | Male'/Colombo/male' | Per Person | 5498.93 | 5436.50 | -1.14 | 5498.93 | 5436.50 | -1.14 | - | - | - |
| Petrol | Petrol | 1 Ltr | 16.85 | 16.71 | -0.84 | 16.52 | 16.24 | -1.72 | 17.19 | 17.19 | 0.00 |
| Taxi fare | Taxi Fare | Per trip | 24.06 | 24.38 | 1.30 | 20.00 | 20.00 | 0.00 | 28.13 | 28.75 | 2.22 |
| Miscellaneous | | | | | | | | | | | |
| Baby cologne | Baby Cheramyl Cologne | 175 ml | 30.85 | 31.42 | 1.84 | 33.47 | 34.61 | 3.40 | 28.23 | 28.23 | 0.00 |
| Baby cologne | Johnson & Johnson Cologne | 175 ml | 24.63 | 24.22 | -1.65 | 22.82 | 21.65 | -5.12 | 26.44 | 26.79 | 1.33 |
| Baby lotion | Johnson & Johnson Baby Loti | 200 Ml, bottle | 35.71 | 35.67 | -0.12 | 36.03 | 36.21 | 0.49 | 35.39 | 35.12 | -0.74 |
| Baby soap | Johnson Baby Soap | 100 Gram | 10.16 | 10.70 | 5.26 | 10.68 | 11.75 | 10.02 | 9.65 | 9.65 | 0.00 |
| Body lotion | Nivea Lotion | 200 Ml | 41.88 | 41.40 | -1.16 | 44.69 | 43.72 | -2.18 | 39.07 | 39.07 | 0.00 |
| Body lotion | Enchanteur Lotion | 200 Ml | 36.92 | 36.77 | -0.39 | 36.52 | 35.92 | -1.65 | 37.31 | 37.63 | 0.85 |
| Cologne | Splash | 200 Ml | 26.38 | 26.10 | -1.06 | 24.67 | 24.06 | -2.48 | 28.08 | 28.13 | 0.18 |
| Cologne | Loviline | 175 ml | 26.68 | 26.22 | -1.75 | 27.06 | 26.16 | -3.31 | 26.31 | 26.27 | -0.13 |
| Color box | Swan Brand / Small Size / 12 | 1 Box | 22.54 | 23.37 | 3.72 | 29.90 | 31.58 | 5.61 | 15.17 | 15.17 | 0.00 |
| Facial cream | Fair & Lovely / Facial Cream | 25 Gram | 22.97 | 22.78 | -0.82 | 23.64 | 23.28 | -1.51 | 22.30 | 22.29 | -0.08 |
| Glaze paper | Glaze Paper | 1 Piece | 2.28 | 2.42 | 6.11 | 1.79 | 2.07 | 15.58 | 2.78 | 2.78 | 0.00 |
| Hair cream | Max | 175 ml | 34.09 | 34.16 | 0.21 | 35.02 | 34.46 | -1.62 | 33.16 | 33.87 | 2.14 |
| Hair cream | Elite | 175 ml | 34.63 | 34.52 | -0.30 | 36.57 | 36.36 | -0.57 | 32.69 | 32.69 | 0.00 |
| Hair cream | Gatsby | 175 ml | 24.02 | 23.75 | -1.11 | 22.81 | 22.36 | -1.95 | 25.24 | 25.15 | -0.36 |
| Hair oil | Bertolli | 100 Ml,bottle | 26.84 | 26.71 | -0.48 | 25.65 | 25.40 | -1.00 | 28.02 | 28.02 | 0.00 |
| Monitor book | Exercise Book / 200 Pages | 1 Book | 16.39 | 17.00 | 3.72 | 17.08 | 18.28 | 7.04 | 15.70 | 15.71 | 0.11 |
| Pen | Red leaf Pen | 1 Piece | 5.09 | 5.16 | 1.36 | 5.11 | 5.25 | 2.70 | 5.07 | 5.07 | 0.00 |
| Pen | Faster Pen | 1 Piece | 5.64 | 5.67 | 0.62 | 5.90 | 5.95 | 0.85 | 5.38 | 5.40 | 0.37 |
| Recordable CD | Recordable CD / Blank CD | 1 Piece | 4.98 | 4.99 | 0.27 | 4.81 | 4.83 | 0.56 | 5.14 | 5.14 | 0.00 |
| Sanitary pads | Stay Free | 1 Packet | 15.43 | 15.63 | 1.24 | 16.28 | 16.54 | 1.58 | 14.59 | 14.71 | 0.86 |
| Sanitary pads | Riaa | 1 Packet | 15.16 | 15.02 | -0.93 | 14.07 | 13.95 | -0.89 | 16.25 | 16.09 | -0.97 |
| Shampoo | Emerone | 200 Ml | 26.82 | 26.64 | -0.69 | 25.77 | 25.48 | -1.10 | 27.88 | 27.79 | -0.31 |
| Shampoo | Head & shoulders | 200 Ml | 38.48 | 38.67 | 0.49 | 38.28 | 38.37 | 0.23 | 38.69 | 38.98 | 0.75 |
| Shampoo | Pantene Pro vitamin | 200 Ml | 36.88 | 37.93 | 2.87 | 36.38 | 38.49 | 5.81 | 37.38 | 37.38 | 0.00 |
| Soap | Lux Soap | 100 Gram | 6.34 | 6.41 | 1.06 | 6.85 | 6.96 | 1.63 | 5.84 | 5.86 | 0.40 |
| Toothpaste | Aqua fresh, | 50 Ml | 16.29 | 16.29 | -0.01 | 15.87 | 15.74 | -0.80 | 16.70 | 16.83 | 0.74 |
| Toothpaste | Colgate | 50 Ml | 15.12 | 15.08 | -0.25 | 14.37 | 13.96 | -2.85 | 15.87 | 16.20 | 2.10 |

Annex 2: Average annual Prices of of selected Items, CPI National, Male' & Atolls, July2012

| Description | Specification | Unit | National - Annualized | | | Male' - Annualized | | | Atolls - Annualized | | |
|------------------------|--|-------------------|--------------------------|---------------------------|--------|--------------------------|---------------------------|--------|--------------------------|---------------------------|--------|
| | | | Average 12 monthly price | | | Average 12 monthly price | | | Average 12 monthly price | | |
| | | | Augst 2010- July 2011 | August 2011- July 2012 | % Chn | Augst 2010- July 2011 | August 2011- July 2012 | % Chn | Augst 2010- July 2011 | August 2011- July 2012 | % Chn |
| Food | | | | | | | | | | | |
| Apollo | Milk Chocó / Wafer cream | 1 Piece | 1.47 | 2.16 | 47.46 | 1.47 | 2.16 | 47.46 | - | - | - |
| Apple | Apple | 1 Piece | 5.21 | 5.56 | 6.84 | 5.05 | 5.41 | 7.11 | 5.37 | 5.72 | 6.58 |
| Aracanut | Raw Aracanut / Uncut / Loose | 1 kg | 61.06 | 104.49 | 71.11 | 59.65 | 99.78 | 67.28 | 62.48 | 109.19 | 74.77 |
| Baby food - cereal | Nestum / Wheat & Honey | 250 Gram / Tin | 39.34 | 47.80 | 21.52 | 39.31 | 48.66 | 23.79 | 39.37 | 46.95 | 19.26 |
| Baby food - cereal | Promina / Banana | 250 Gram / Packet | 17.86 | 20.63 | 15.53 | 17.20 | 20.22 | 17.61 | 18.51 | 21.03 | 13.61 |
| Baby food - fruit | Purity / Fruit / Second food | 200ml, Bottle | - | - | - | 21.87 | 25.05 | 14.53 | - | - | - |
| Baby milk powder | Lactogen | 450 Gram, tin | 68.19 | 75.15 | 10.21 | 65.39 | 73.00 | 11.63 | 70.99 | 77.30 | 8.89 |
| Baby milk powder | Anflace | 450 Gram / Tin | 135.62 | 170.34 | 25.60 | 136.42 | 168.69 | 23.65 | 134.82 | 171.99 | 27.57 |
| Baby milk powder | S.M.A / Progress | 450 Gram / Tin | 114.81 | 125.72 | 9.50 | 111.87 | 122.69 | 9.67 | 117.75 | 128.75 | 9.35 |
| Banana | Bonthiraiy | 1 Piece | 1.87 | 1.95 | 3.86 | 2.16 | 2.32 | 7.21 | 1.59 | 1.57 | -0.71 |
| Beans | Fresh Beans | 1 kg | 57.67 | 59.75 | 3.61 | 51.58 | 56.57 | 9.68 | 63.75 | 62.92 | -1.31 |
| Biscuits | Cream Cracker, Khong Guan | 200 gram, packet | 10.09 | 12.87 | 27.62 | 9.84 | 12.76 | 29.63 | 10.33 | 12.99 | 25.70 |
| Biscuits | Marie Biscuit | 400 Gram | 17.34 | 22.27 | 28.99 | 16.18 | 21.35 | 31.95 | 18.50 | 23.39 | 26.41 |
| Bread | Small Bread | 1 Piece | 10.39 | 12.29 | 18.25 | 10.96 | 12.48 | 13.89 | 9.83 | 12.11 | 23.12 |
| Bread | Large | 1 Piece | 17.91 | 19.48 | 8.76 | 21.30 | 23.23 | 9.04 | 14.51 | 15.73 | 8.36 |
| Bread spread | Chocolate Crumpy | 225 Gram | 37.67 | 42.21 | 12.07 | 36.35 | 40.08 | 10.27 | 38.99 | 44.35 | 13.74 |
| Bun | Small Buns/ Un packed | 1 Piece | 0.79 | 0.77 | -2.21 | 0.48 | 0.56 | 15.95 | 1.10 | 0.99 | -10.12 |
| Butter bun | butter buns / Packed | 1 Piece | 3.41 | 4.37 | 28.21 | 3.67 | 4.10 | 11.76 | 3.15 | 4.65 | 47.34 |
| Cabbage | Fresh Cabbage | 1 kg | 31.42 | 34.61 | 10.15 | 28.64 | 31.44 | 9.77 | 34.19 | 37.77 | 10.48 |
| Candy | Solano | 1 Piece / 25 Gram | 0.39 | 0.43 | 10.17 | 0.43 | 0.41 | -4.37 | 0.35 | 0.45 | 28.27 |
| Canned baked beans | Baked Beans / Canned | 400 Gram | 11.67 | 14.18 | 21.44 | 11.47 | 13.88 | 21.01 | 11.88 | 14.47 | 21.85 |
| Canned green peas | Green peas / Processed peas / Canned | 440 Gram | 8.43 | 10.45 | 23.86 | 8.54 | 10.90 | 27.64 | 8.33 | 10.00 | 20.00 |
| Canned mixed fruits | Canned Mixed Fruit / Small | 398 Gram | 26.79 | 29.57 | 10.35 | 27.37 | 28.59 | 4.45 | 26.21 | 30.54 | 16.52 |
| Canned pineapple | Canned Pineapple | 567 Gram | 16.02 | 23.44 | 46.35 | 15.98 | 22.59 | 41.36 | 16.05 | 24.29 | 51.32 |
| Carrot | Fresh Carrot | 1 kg | 31.43 | 35.49 | 12.92 | 26.72 | 31.96 | 19.61 | 36.15 | 39.03 | 7.97 |
| Chicken drumsticks | Chicken drumstick | 1 kg | 54.30 | 73.90 | 36.09 | 54.30 | 73.90 | 36.09 | - | - | - |
| Chicken sausage | Chicken Sausage / Packed | 340 Gram | 21.01 | 23.28 | 10.79 | 18.23 | 21.47 | 17.80 | 23.79 | 25.08 | 5.43 |
| Chilli powder | Chillie Powder / Packed Locally | 50 Gram | 5.60 | 7.37 | 31.58 | 5.33 | 6.73 | 26.29 | 5.88 | 8.02 | 36.36 |
| Cigarette | Marlboro | 20 Piece / 1 Pack | 20.35 | 33.97 | 66.88 | 20.26 | 34.14 | 68.50 | 20.44 | 33.79 | 65.27 |
| Cigarette | Benson | 20 Piece / 1 Pack | 19.62 | 31.31 | 59.57 | 19.56 | 34.14 | 74.59 | 19.69 | 28.48 | 44.65 |
| Coconut | Medium size / Coconut | 1 Piece | 6.84 | 4.89 | -28.47 | 6.84 | 4.89 | -28.47 | - | - | - |
| Coffee | Nescafe, Cafe' soluble coffee / Canned | 50 Gram | 32.51 | 40.89 | 25.78 | 32.65 | 40.99 | 25.53 | 32.36 | 40.79 | 26.04 |
| Coke | Dubai coke / Canned | 300 Ml | 7.83 | 10.82 | 38.32 | 7.64 | 10.74 | 40.64 | 8.01 | 10.91 | 36.10 |
| Coke | Coca Cola / Large Bottle | 1500 Ml | 25.62 | 30.84 | 20.35 | 25.14 | 29.61 | 17.80 | 26.11 | 32.06 | 22.80 |
| Condensed milk | Double Peach | 397Gram, tin | 12.25 | 15.74 | 28.50 | 11.92 | 15.34 | 28.64 | 12.57 | 16.14 | 28.38 |
| Condensed milk | Cow Bell | 397 Gram / Tin | 11.78 | 15.23 | 29.30 | 11.24 | 15.22 | 35.35 | 12.31 | 15.24 | 23.78 |
| Cooking oil | Bemoli Oil | 2 Ltr | 54.06 | 66.70 | 23.40 | 53.55 | 63.42 | 18.44 | 54.57 | 69.98 | 28.25 |
| Cooking oil | Sun Flower Oil | 2 Ltr | 78.86 | 99.66 | 26.37 | 77.02 | 100.72 | 30.76 | 80.71 | 98.61 | 22.18 |
| Corn flake | Kellogg's / Wheat and Honey | 300 Gram | 43.80 | 37.91 | -13.45 | 42.60 | 43.81 | 2.86 | 45.00 | 32.00 | -28.89 |
| Cucumber | Fresh Cucumber | 1 kg | 24.24 | 25.52 | 5.28 | 27.82 | 31.79 | 14.28 | 20.66 | 19.25 | -6.82 |
| Curry powder | Curry Powder / Antelope brand / Canned | 340 Gram | 29.64 | 40.61 | 37.02 | 31.55 | 41.43 | 31.32 | 27.74 | 39.80 | 43.50 |
| Curry powder | Fish curry powder / Packed locally | 50 Gram | 5.51 | 7.18 | 30.42 | 5.32 | 6.78 | 27.55 | 5.69 | 7.58 | 33.10 |
| Curry powder | Chicken curry powder / Packed locally | 50 Gram | 5.48 | 7.19 | 31.10 | 5.34 | 6.85 | 28.32 | 5.63 | 7.53 | 33.74 |
| Dairy milk | Dutch Lady / Milk Pack / Small | 250 Ml | 7.58 | 10.09 | 33.09 | 7.54 | 9.68 | 28.39 | 7.62 | 10.49 | 37.74 |
| Dates | Dates without nuts | 200 Gram / pack | - | - | - | 29.87 | 31.99 | 7.08 | - | - | - |
| Dhal | Yellow Colored Dhal | 1 kg | 45.52 | 49.14 | 7.96 | 44.93 | 47.55 | 5.82 | 46.10 | 50.74 | 10.05 |
| Dried Chili | Dried Chili (Hikimirus) / Loose | 1 kg | 57.60 | 86.04 | 49.36 | 55.44 | 88.56 | 59.73 | 59.77 | 83.52 | 39.74 |
| Egg | Chicken egg / Imported | 1 Piece | 1.62 | 1.83 | 12.70 | 1.58 | 1.73 | 9.46 | 1.66 | 1.93 | 15.76 |
| Flour | Ordinary Flour / loose | 1 kg | 4.31 | 4.25 | -1.45 | 3.82 | 3.68 | -3.66 | 4.80 | 4.81 | 0.30 |
| Frozen beef | Frozen Beef | 1 kg | 56.29 | 64.51 | 14.62 | 50.59 | 68.63 | 35.65 | 61.98 | 60.40 | 5.73 |
| Frozen chicken | Frozen chicken / Whole chicken / Pre p. 1 kg | 1 kg | 44.31 | 57.57 | 29.91 | 41.15 | 54.17 | 31.64 | 47.47 | 60.96 | 28.41 |
| Garlic | Garlic | 100 Gram | 7.51 | 5.05 | -32.78 | 7.42 | 3.87 | -47.88 | 7.59 | 6.23 | -18.01 |
| Ginger | Ginger | 100 Gram | 6.40 | 5.48 | -14.32 | 5.46 | 3.99 | -27.04 | 7.33 | 6.98 | -4.83 |
| Githayo Mirus | Dhivehi mirus | 1 Piece | 2.83 | 2.99 | 5.83 | 2.93 | 2.85 | -2.79 | 2.72 | 3.13 | 15.12 |
| Green chilli | Green Chilli / Imported | 100 Gram | 11.88 | 17.17 | 44.57 | 9.10 | 8.05 | -11.55 | 14.66 | 26.29 | 79.40 |
| Ice cream | Chocolate Ice cream / Tub | 1 Ltr | - | - | - | 47.55 | 60.07 | 26.34 | - | - | - |
| Jam | Tova Brand / Bottle | 450 Gram | 22.33 | 25.13 | 12.57 | 22.52 | 24.73 | 9.79 | 22.14 | 25.54 | 15.39 |
| Juice-Foster Clark | Foster Clark / Powdered Juice / Bottled | 750 Gram | 56.55 | 66.22 | 17.09 | 56.29 | 65.41 | 16.22 | 56.82 | 67.02 | 17.96 |
| Juice-Sun quick | Sun quick / Orange Juice / Bottled | 840 Ml | 59.45 | 73.50 | 23.63 | 58.16 | 73.19 | 25.84 | 60.74 | 73.81 | 21.52 |
| lemon | Imported lemon | 1 Piece | 1.96 | 2.18 | 10.98 | 1.87 | 2.17 | 16.32 | 2.05 | 2.18 | 6.13 |
| Mango | Fresh / local / Mango | 1 Piece | - | - | - | 9.67 | 7.64 | -20.98 | - | - | - |
| Margarine | Daisy brand tub / Small | 250 Gram | 21.37 | 26.52 | 24.12 | 21.70 | 26.27 | 21.05 | 21.03 | 26.77 | 27.29 |
| Milk powder | Coast | 1800 Gram, tin | 213.20 | 262.47 | 23.11 | 211.25 | 251.79 | 19.19 | 215.15 | 273.16 | 26.96 |
| Milk powder | Anchor Milk | 1800 Gram / Tin | 217.08 | 254.12 | 17.06 | 218.58 | 277.28 | 26.86 | 215.58 | 230.97 | 7.14 |
| Milk powder | Nido | 1800 Gram / Tin | 205.32 | 266.74 | 29.91 | 206.56 | 270.02 | 30.72 | 204.08 | 263.45 | 29.09 |
| Milo | Nestle Milo Powder / Canned | 400 Gram | 57.25 | 80.88 | 41.29 | 58.51 | 83.22 | 42.23 | 55.98 | 78.55 | 40.31 |
| Mixed fresh vegetables | Mixed Vegetables | 1 kg | 41.12 | 41.85 | 1.78 | 42.71 | 42.49 | -0.52 | 39.52 | 41.21 | 4.27 |
| Noodles | Mamee Noodles / Packet | 85 Gram | 3.86 | 4.57 | 18.49 | 3.66 | 4.16 | 13.63 | 4.05 | 4.98 | 22.87 |

| Description | Specification | Unit | National - Annualized | | | Male' - Annualized | | | Atolls - Annualized | | |
|------------------------------|--|------------------------|---------------------------|---------------------------|--------|---------------------------|---------------------------|--------|---------------------------|---------------------------|--------|
| | | | Average 12 monthly price | | | Average 12 monthly price | | | Average 12 monthly price | | |
| | | | Aujust 2010- July 2011 | August 2011- July 2012 | % Chn | Aujust 2010- July 2011 | August 2011- July 2012 | % Chn | Aujust 2010- July 2011 | August 2011- July 2012 | % Chn |
| Onion | Imported Onion | 1 kg | 21.33 | 15.05 | -29.46 | 19.53 | 14.02 | -28.21 | 23.12 | 16.07 | -30.51 |
| Orange | Fresh Orange | 1 Piece | 4.33 | 4.46 | 2.98 | 4.09 | 3.91 | -4.34 | 4.57 | 5.00 | 9.54 |
| Potato | Imported Potato | 1 kg | 13.74 | 13.54 | -1.43 | 12.74 | 12.48 | -2.09 | 14.74 | 14.61 | -0.87 |
| Rice | Ordinary Rice / loose | 1 kg | 5.03 | 5.03 | 0.03 | 4.63 | 4.55 | -1.79 | 5.43 | 5.51 | 1.58 |
| Rice-Basmati | Basmati Rice / Pre Packed | 1 kg | 27.37 | 27.93 | 2.06 | 26.16 | 27.07 | 3.47 | 28.57 | 28.79 | 0.77 |
| Salt | Fine Salt / Packed | 500 Gram | 4.91 | 5.38 | 9.54 | 4.69 | 5.17 | 10.18 | 5.13 | 5.59 | 8.95 |
| Saltish short-eats | Handulu gulha | 1 Piece | 1.58 | 1.48 | -6.00 | 1.53 | 1.30 | -14.82 | 1.63 | 1.67 | 2.27 |
| Sauce | Tomato Sauce / life Brand | 320 Gram / Bottled | 10.71 | 13.39 | 25.07 | 10.40 | 14.02 | 34.82 | 11.01 | 12.76 | 15.87 |
| Sauce | Chillie Sauce / life Brand | 335 Gram / Bottled | 11.54 | 14.53 | 25.95 | 11.69 | 15.63 | 33.72 | 11.38 | 13.43 | 17.98 |
| Sauce | Chillie & Garlic Sauce / life Brand | 320 Gram / Bottled | 12.45 | 15.34 | 23.17 | 12.75 | 16.43 | 28.87 | 12.16 | 14.25 | 17.19 |
| Sugar | Dhoabraali Hakuru | 1 kg | 5.09 | 5.01 | -1.59 | 4.67 | 4.55 | -2.71 | 5.51 | 5.48 | -0.65 |
| Sweet short-eats | Foni folhi | 1 Piece | 1.93 | 2.28 | 17.94 | 2.00 | 2.30 | 15.18 | 1.86 | 2.25 | 20.90 |
| Tea leaves-loose | Ceylon Tea Leaves (loose) | 1 kg | 48.76 | 50.39 | 3.35 | 42.85 | 47.53 | 10.91 | 54.67 | 53.26 | -2.58 |
| Tea leaves-tea bag | Today's Taste / 100 tea bag | 200 Gram | 26.06 | 33.87 | 30.01 | 26.43 | 33.87 | 28.12 | 25.68 | 33.88 | 31.94 |
| Tea leaves-tea bag | Melesna / 100 tea bag | 200 Gram | 27.22 | 36.06 | 32.50 | 28.19 | 40.96 | 45.29 | 26.24 | 31.17 | 18.77 |
| Tea leaves-tea bag | Akbar / 100 tea bag | 200 Gram | 26.39 | 36.04 | 36.55 | 26.77 | 35.07 | 31.01 | 26.01 | 37.00 | 42.26 |
| Tomato | Fresh Tomato | 1Kg | 31.37 | 34.37 | 9.57 | 30.88 | 34.83 | 12.77 | 31.85 | 33.91 | 6.46 |
| Tomato paste | Tomato Paste / Small can | 70 Gram | 2.72 | 3.01 | 10.57 | 2.50 | 2.89 | 15.74 | 2.94 | 3.12 | 6.18 |
| Watermelon | Water melon (fresh Locally produced) | 1 kg | - | - | - | 16.21 | 22.30 | 37.55 | - | - | - |
| Fish | | | | | | | | | | | |
| Canned fish in brine | Felivaru Canned Fish / Chunk in Brine | 185 Gram | 14.68 | 17.42 | 18.64 | 14.78 | 17.20 | 16.44 | 14.59 | 17.63 | 20.87 |
| Canned fish in oil | Felivaru canned fish / Chunk in Oil | 185 Gram | 16.59 | 18.90 | 13.93 | 16.27 | 18.32 | 12.62 | 16.91 | 19.47 | 15.20 |
| Dried fish chips | Pre packed Dried fish chips | 100 Gram | 10.96 | 13.50 | 23.18 | 10.96 | 13.50 | 23.18 | - | - | - |
| Fish paste | Fasmeeru Rihaakuru / Bottled | 450 Gram | 32.13 | 34.78 | 8.26 | 32.13 | 34.78 | 8.26 | - | - | - |
| Other tuna | Other Tuna / Latti | 1 kg | 25.20 | 81.27 | 222.54 | 25.20 | 81.27 | 222.54 | - | - | - |
| Reef fish | Reef Fish / Maaniya mas | 1 kg | 22.81 | 32.94 | 44.40 | 22.81 | 32.94 | 44.40 | - | - | - |
| Skipjack tuna | Godha / Kalhubilamas | 1 kg | 39.17 | 77.04 | 96.69 | 39.17 | 77.04 | 96.69 | - | - | - |
| Smoked fish | Smoked Fish (Valhoamas) / Loose | 1 kg | 89.58 | 128.23 | 43.14 | 71.67 | 134.79 | 88.07 | 107.50 | 121.67 | 13.18 |
| Clothing and Footwear | | | | | | | | | | | |
| Dress material | Most often sold material / Plane / Faati 1 Muh | | 25.08 | 31.81 | 26.87 | 25.50 | 34.86 | 36.72 | 24.66 | 28.77 | 16.69 |
| Dress material | Most often sold material / Design / Faa 1 Muh | | 34.26 | 32.20 | -6.02 | 40.00 | 37.47 | -6.31 | 28.53 | 26.93 | -5.60 |
| Men's jeans | Mend's Jeans / Most Sold Material | 1 Piece | 221.01 | 260.11 | 17.69 | 226.05 | 286.60 | 26.79 | 215.97 | 233.62 | 8.17 |
| Men's sandals | Most recently sold brand | 1 Pair | 209.67 | 235.59 | 12.36 | 152.92 | 192.46 | 25.86 | 266.42 | 278.73 | 4.62 |
| Men's shirt | Men T-Shirt / Most Sold material | 1 Piece | 170.42 | 204.23 | 19.84 | 173.96 | 215.56 | 23.92 | 166.88 | 192.90 | 15.60 |
| Men's shoes | Office Shoes | 1 Pair | 257.08 | 349.43 | 35.92 | 257.08 | 349.43 | 35.92 | - | - | - |
| Men's trousers | Men's Trousers / Long | 1 Piece | 204.63 | 233.03 | 13.88 | 190.46 | 230.89 | 21.23 | 218.80 | 235.18 | 7.48 |
| Men's t-shirt | Men Shirt / Most Sold Brand | 1 Piece | 157.72 | 192.37 | 21.97 | 160.29 | 181.69 | 13.35 | 155.16 | 203.04 | 30.86 |
| Nylon faivaan | Size 10 | 1 Pair | 14.09 | 14.84 | 5.34 | 12.70 | 13.98 | 10.06 | 15.47 | 15.70 | 1.48 |
| School shoes | School Shoes/ Girl / Most recently sold | 1 Pair | 150.23 | 177.89 | 18.42 | 141.53 | 184.34 | 30.25 | 158.92 | 171.45 | 7.88 |
| School uniform | School Uniform / Boys / Medium size 1 | 1 Piece | 65.60 | 120.00 | 82.91 | 70.21 | 120.39 | 71.48 | 61.00 | 119.61 | 96.08 |
| Sport shoes | Diadora / indoor tennis shoes / Men | 1 Pair | 336.91 | 385.52 | 14.43 | 272.50 | 343.03 | 25.88 | 401.32 | 428.00 | 6.65 |
| Tailoring national dress | National dress / Unstrech Material | 1 Piece | 118.00 | 128.04 | 8.51 | 140.00 | 149.17 | 6.55 | 96.00 | 106.91 | 11.37 |
| Tailoring women's blouse | Sewing of blouse | 1 Piece | 64.32 | 73.61 | 14.45 | 71.04 | 75.00 | 5.57 | 57.60 | 72.23 | 25.40 |
| Women's jeans | Women's Jeans / Fade | 1 Piece | 189.01 | 205.94 | 8.96 | 203.06 | 220.00 | 8.34 | 174.97 | 191.89 | 9.67 |
| Women's sandals | Casual (home-wear) | 1 Piece | 134.14 | 168.25 | 25.43 | 137.08 | 189.97 | 38.58 | 131.20 | 146.52 | 11.68 |
| Women's t-shirt | Ladies T - shirt / Most sold Brand | 1 Piece | 149.20 | 169.31 | 13.48 | 156.87 | 192.04 | 22.42 | 141.53 | 146.57 | 3.56 |
| Housing | | | | | | | | | | | |
| Cooking gas | Cooking gas / Excluding Transport cost | 13 Kg | 287.48 | 338.59 | 17.78 | 317.00 | 387.50 | 22.24 | 257.95 | 289.69 | 12.30 |
| House rent index | Average house rent index | Index | 157.40 | 164.00 | 4.20 | 157.40 | 164.00 | 4.20 | - | - | - |
| Kerosene oil | Kerosene oil | 1 Ltr | 13.09 | 16.70 | 27.56 | 12.33 | 16.47 | 33.51 | 13.85 | 16.93 | 22.26 |
| Furnishing | | | | | | | | | | | |
| Battery | "D" Size Battery / 555 Brand | 1 Piece | 3.16 | 3.73 | 17.93 | 3.00 | 3.61 | 20.13 | 3.33 | 3.86 | 15.94 |
| Battery | "D" Size Battery / Eveready Brand | 1 Piece | 5.08 | 6.44 | 26.92 | - | - | - | 5.08 | 6.44 | 26.92 |
| Bedroom set | 1 Queen size bed / dressing table / cup | 1 Set | 6660.42 | 9118.08 | 36.90 | 6660.42 | 9118.08 | 36.90 | - | - | - |
| Bed sheet | Single Bed sheet / Ordinary brand | 1 Piece | 63.49 | 68.47 | 7.85 | 41.32 | 52.75 | 27.66 | 85.66 | 84.20 | -1.71 |
| Cement | Cement bag | 50 kg | 91.49 | 115.23 | 25.95 | 83.67 | 108.81 | 30.05 | 99.31 | 121.65 | 22.50 |
| Chair | Plastic Chair / large / without handle | 1 Piece | 130.98 | 176.98 | 35.12 | 130.00 | 150.41 | 15.70 | 131.97 | 203.55 | 54.24 |
| Domestic servants | Salary of Domestic Servants | Per person / Per month | 1285.00 | 1520.58 | 18.33 | 1285.00 | 1520.58 | 18.33 | - | - | - |
| Fan | Electric fan (Ceiling) / Usha Brand / 43 i | 1 Piece | 461.45 | 517.93 | 12.24 | 453.13 | 494.60 | 9.15 | 469.77 | 541.26 | 15.22 |
| Glasses | Plain Glass / Medium Size | 1 Piece | 6.33 | 8.15 | 28.69 | 6.12 | 7.42 | 21.34 | 6.55 | 8.88 | 35.55 |
| Insecticides | Insecticides / Mosfly Brand / Small Bott | 400 ML | 35.04 | 43.54 | 24.25 | 33.52 | 42.18 | 25.86 | 36.56 | 44.89 | 22.78 |
| Insecticides | Insecticides / Bop Spray Brand / Small E | 400 ML | 31.23 | - | - | 28.54 | - | - | 33.92 | 40.61 | 19.72 |
| Iron | Electric Iron / Phillip brand / 1000 V | 1 Piece | 257.09 | 305.79 | 18.94 | 234.72 | 257.29 | 9.62 | 279.46 | 354.28 | 26.77 |
| Light tube | Flourescent tube / 2 feet / White Color | 1 Piece | 12.77 | 14.88 | 16.48 | 11.71 | 15.22 | 29.96 | 13.84 | 14.54 | 5.07 |
| Linoleum | Aadhaige Tharafaalu (linoleum) | 1 Feet | 9.40 | 13.74 | 46.17 | 9.03 | 15.91 | 76.18 | 9.78 | 11.58 | 18.47 |
| Mattress | Single / kurlon or Temptation | 1 Piece | 2247.55 | 2656.55 | 18.20 | 2502.50 | 3378.10 | 34.99 | 1992.59 | 1935.00 | -2.89 |
| Paint | Wall Paint | 5 litre | 203.53 | 162.08 | -20.37 | 171.58 | 189.60 | 10.50 | 235.48 | 134.55 | -42.86 |
| Plywood | 3 mm | 1 Piece | 114.87 | 128.79 | 12.12 | 116.21 | 144.20 | 24.08 | 113.53 | 113.39 | -0.12 |
| Refrigerator | Forest free Refrigerator / 50 kg/ Hitach | 1 Piece | 4678.03 | 6102.81 | 30.46 | 4340.58 | 6309.71 | 45.37 | 5015.47 | 5895.90 | 17.55 |
| Roofing sheet | 0.6 mm / 1 feet | 1 Piece | 23.63 | 30.30 | 28.27 | 26.02 | 28.47 | 9.43 | 21.23 | 32.13 | 51.37 |

| Description | Specification | Unit | National - Annualized | | | Male' - Annualized | | | Atolls - Annualized | | |
|--------------------------------------|---|--------------------|---------------------------|---------------------------|--------|---------------------------|---------------------------|--------|---------------------------|---------------------------|--------|
| | | | Average 12 monthly price | | | Average 12 monthly price | | | Average 12 monthly price | | |
| | | | Aujust 2010- July 2011 | August 2011- July 2012 | % Chn | Aujust 2010- July 2011 | August 2011- July 2012 | % Chn | Aujust 2010- July 2011 | August 2011- July 2012 | % Chn |
| Sewing machine | Sewing Meching / With 21 Design / Bro 1 | Piece | 4379.71 | 4404.29 | 0.56 | 5291.67 | 5664.58 | 7.05 | 3467.75 | 3144.00 | -9.34 |
| Single bed | Single bed / With fancy Plywood | 1 Piece | 1703.77 | 1966.82 | 15.44 | 1576.04 | 2133.65 | 35.38 | 1831.50 | 1800.00 | -1.72 |
| Sofa Set | Sofa set / Plywood with sponge cushior | 1 Piece | 6141.86 | 7283.80 | 18.59 | 5662.50 | 7952.60 | 40.44 | 6621.21 | 6615.00 | -0.09 |
| Stove | 2 Sided gas stove / Hitachi brand | 1 Piece | 505.29 | 483.54 | -4.30 | 497.92 | 471.05 | -5.40 | 512.66 | 496.04 | -3.24 |
| Thermo flask | Thermo flask / AQ Brand | 1 Piece | 230.50 | 172.50 | -25.16 | - | - | - | 230.50 | 172.50 | -25.16 |
| Washing machine | Washing Machine / Super general bran | 1 Piece | 3070.52 | - | - | 3440.00 | - | - | 2701.04 | 3697.19 | 36.88 |
| Washing power | Soklin Brand Washing powder Pack | 1 Kg | 26.79 | 29.55 | 10.28 | 21.97 | 22.58 | 2.78 | 31.62 | 36.52 | 15.49 |
| Washing power | B 29 Brand Washing powder Pack | 1 Kg | 22.20 | 26.85 | 20.92 | 19.08 | 22.77 | 19.34 | 25.32 | 30.92 | 22.11 |
| Water pump | Pedroller Water Pump / 1 inches | 1 Piece | 2574.89 | 2999.75 | 16.50 | 2823.78 | 3559.91 | 26.07 | 2326.00 | 2439.60 | 4.88 |
| Health | | | | | | | | | | | |
| Chest x-ray | Chest x-ray | Per test | 72.81 | 100.83 | 38.47 | 112.56 | 153.47 | 36.35 | 33.07 | 48.18 | 45.67 |
| Dental service (ordinary filling) | Dental Service / Ordinary Filling | Per Patient | 263.89 | 283.33 | 7.37 | 215.28 | 241.67 | 12.26 | 312.50 | 325.00 | 4.00 |
| Diegen | Diegen / 200 ml | 1 Bottle | 25.19 | 34.22 | 35.89 | 26.75 | 37.63 | 40.69 | 23.62 | 30.81 | 30.45 |
| Doctor's consulting fee-general | consultation fee / General Doctor | Per Patient | 87.50 | 96.09 | 9.82 | 81.25 | 92.19 | 13.46 | 93.75 | 100.00 | 6.67 |
| Doctor's consulting fee-special | Doctor consultation fee / Specialist | Per Patient | 131.04 | 154.65 | 18.02 | 129.58 | 176.81 | 36.44 | 132.50 | 132.50 | 0.00 |
| Forcevel | Forcevel / 500 mg | 1 Tablet | 3.19 | 3.68 | 15.40 | 3.51 | 4.00 | 13.87 | 2.87 | 3.37 | 17.28 |
| Helibo orange | Helibo Orange / 200 ml | 1 Bottle | 38.11 | 50.75 | 33.15 | 43.25 | 57.86 | 33.79 | 32.98 | 43.63 | 32.31 |
| Panadol | Panadol / 500 mg | 1 Tablet | 0.42 | 0.47 | 10.48 | 0.50 | 0.50 | 0.54 | 0.35 | 0.43 | 24.70 |
| Vicks balm | Vicks Balm / 19 Gram | 1 Bottle | 10.45 | 13.35 | 27.66 | 10.81 | 13.94 | 29.05 | 10.10 | 12.75 | 26.18 |
| Vitamin C | Vitamin C / 500 mg | 1 Tablet | 0.88 | 0.86 | -1.85 | 0.82 | 0.99 | 20.95 | 0.93 | 0.73 | -21.96 |
| Transport | | | | | | | | | | | |
| Bicycle | Dahon | 1 Piece | 1593.75 | 1682.60 | 5.58 | 1850.00 | 1903.96 | 2.92 | 1337.50 | 1461.25 | 9.25 |
| Bicycle | Mountain | 1 Piece | 1116.67 | 1278.56 | 14.50 | 1116.67 | 1278.56 | 14.50 | - | - | - |
| Cleaning of motorcycle | Full cycle | Per vehicle | 70.63 | 80.67 | 14.22 | 70.63 | 80.67 | 14.22 | - | - | - |
| Domestic airfare | Male'/Gan/Male' | Per Person / Adult | 2979.67 | 3341.55 | 12.15 | 2979.67 | 3341.55 | 12.15 | - | - | - |
| Domestic airfare | Male'/Hanimadhoo/Male' | Per Person / Adult | 2279.67 | 2626.77 | 15.23 | 2279.67 | 2626.77 | 15.23 | - | - | - |
| Domestic airfare | Male'/Kade'dhoo/ Male' | Per Person / Adult | 2629.67 | 2996.50 | 13.95 | 2629.67 | 2996.50 | 13.95 | - | - | - |
| Domestic airfare | Male'/Kah'dhoo/male' | Per Person / Adult | 2279.67 | 2610.10 | 14.49 | 2279.67 | 2610.10 | 14.49 | - | - | - |
| International airfare | Male'/Colombo/male' | Per Person | 4275.03 | 5309.54 | 24.20 | 4275.03 | 5309.54 | 24.20 | - | - | - |
| Motor cycle tyre | Back Tyre | 1 Piece | 374.44 | 705.41 | 88.39 | 374.44 | 705.41 | 88.39 | - | - | - |
| Motor cycle tyre | Front tyre | 1 Piece | 356.00 | 623.63 | 75.18 | 356.00 | 623.63 | 75.18 | - | - | - |
| Motorcycle | Honda Wave 125 I | 1 Piece | 45018.25 | 55263.13 | 22.76 | 46225.00 | 55298.50 | 19.63 | 43811.50 | 55227.75 | 26.06 |
| Motorcycle | Honda Wave 125 H | 1 Piece | 41891.67 | 49784.47 | 18.84 | 41058.33 | 48666.67 | 18.53 | 42725.00 | 50902.28 | 19.14 |
| Petrol | Petrol | 1 Ltr | 12.88 | 16.30 | 26.53 | 12.89 | 16.02 | 24.29 | 12.88 | 16.59 | 28.78 |
| Postage of letter - Asia | Postage of letter to Asian Countries | Per letter | 16.00 | 16.83 | 5.21 | 16.00 | 16.83 | 5.21 | - | - | - |
| Taxi fare | Taxi Fare | Per trip | 20.89 | 22.71 | 8.73 | 20.00 | 20.00 | 0.00 | 21.77 | 25.42 | 16.75 |
| Hotel, cafes & resturants | | | | | | | | | | | |
| Meals | 4 roshi / 1fish curry / 1 black tea / 1 dhi | Per person | 17.25 | 23.66 | 37.14 | 17.25 | 23.66 | 37.14 | - | - | - |
| Meals | 4 roshi / 1 chicken curry / 1 black tea /1 | Per person | 25.42 | 38.19 | 50.27 | 25.42 | 38.19 | 50.27 | - | - | - |
| Pizza | Tuna Mushroom | whole pizza | 68.47 | 86.18 | 25.86 | 68.47 | 86.18 | 25.86 | - | - | - |
| Restaurant meals | Fish & Chips | 1 plate | 48.00 | 58.57 | 22.02 | 48.00 | 58.57 | 22.02 | - | - | - |
| Restaurant meals | Nasi Goreng | 1 plate | 51.89 | 63.78 | 22.92 | 51.89 | 63.78 | 22.92 | - | - | - |
| Miscellaneous | | | | | | | | | | | |
| Audio album- CD | Audio CD / Hindi CD | 1 Piece | 30.00 | 31.07 | 3.57 | 45.00 | 47.15 | 4.77 | 15.00 | 15.00 | 0.00 |
| Baby cologne | Baby Cheramy Cologne | 175 ml | 23.79 | 31.26 | 31.40 | 23.25 | 33.96 | 46.02 | 24.32 | 28.56 | 17.42 |
| Baby cologne | Johnson & Johnson Cologne | 175 ml | 21.59 | 24.14 | 11.84 | 20.66 | 22.16 | 7.25 | 22.51 | 26.13 | 16.06 |
| Baby diapers | Huggies / Small Size | 1 Packet | 128.88 | 146.51 | 13.68 | 129.75 | 146.31 | 12.76 | 128.01 | 146.71 | 14.60 |
| Baby lotion | Johnson & Johnson Baby Lotion | 200 ML, bottle | 30.24 | 35.18 | 16.33 | 30.51 | 35.04 | 14.86 | 29.97 | 35.31 | 17.82 |
| Baby soap | Johnson Baby Soap | 100 Gram | 9.37 | 10.20 | 8.92 | 8.64 | 10.60 | 22.71 | 10.10 | 9.81 | -2.88 |
| Body lotion | Nivea Lotion | 200 ML | 39.82 | 42.16 | 5.89 | 42.28 | 45.73 | 8.17 | 37.36 | 38.60 | 3.30 |
| Body lotion | Enchantear Lotion | 200 ML | 32.07 | 35.77 | 11.54 | 31.15 | 34.88 | 11.98 | 32.99 | 36.66 | 11.13 |
| Cable TV charges | Cable Charges | Per Month | 219.53 | 229.49 | 4.54 | 250.00 | 250.00 | 0.00 | 189.06 | 208.99 | 10.54 |
| CD player | CD Player / Phillips Brand | 1 Piece | 1027.59 | 955.29 | -7.04 | 1213.10 | 1133.56 | -6.56 | 842.08 | 777.03 | -7.73 |
| Cologne | Splash | 200 ML | 20.48 | 25.45 | 24.24 | 19.80 | 24.32 | 22.81 | 21.16 | 26.57 | 25.58 |
| Cologne | Loviline | 175 ml | 21.17 | 26.37 | 24.54 | 21.66 | 27.61 | 27.46 | 20.68 | 25.12 | 21.48 |
| Color box | Swan Brand / Small Size / 12 Color | 1 Box | 17.46 | 19.92 | 14.10 | 20.54 | 24.91 | 21.29 | 14.38 | 14.94 | 3.83 |
| Facial cream | Fair & Lovely / Facial Cream | 25 Gram | 17.32 | 20.99 | 21.13 | 16.29 | 20.95 | 28.57 | 18.35 | 21.02 | 14.53 |
| Glaze paper | Glaze Paper | 1 Piece | 1.86 | 2.25 | 21.35 | 1.29 | 1.78 | 37.79 | 2.43 | 2.73 | 12.63 |
| Hair cream | Max | 175 ml | 27.32 | 33.23 | 21.64 | 27.49 | 33.84 | 23.10 | 27.14 | 32.62 | 20.17 |
| Hair cream | Elite | 175 ml | 26.80 | 33.49 | 24.97 | 27.04 | 35.56 | 31.52 | 26.56 | 31.42 | 18.30 |
| Hair cream | Gatsby | 175 ml | 22.53 | 23.78 | 5.57 | 20.57 | 21.90 | 6.48 | 24.49 | 25.66 | 4.81 |
| Haircut-female | Female Hair Cut | Per Person | 72.71 | 84.98 | 16.88 | 129.17 | 153.72 | 19.01 | 16.25 | 16.25 | 0.00 |
| Haircut-men | Male Hair Cut | Per Person | 22.71 | 35.38 | 55.79 | 34.38 | 55.96 | 62.78 | 11.04 | 14.80 | 34.03 |
| Monitor book | Exercise Book / 200 Pages | 1 Book | 13.05 | 15.69 | 20.23 | 13.56 | 16.31 | 20.28 | 12.55 | 15.08 | 20.19 |
| Pen | Red leaf Pen | 1 Piece | 4.79 | 5.18 | 8.01 | 4.67 | 5.14 | 10.17 | 4.91 | 5.21 | 5.96 |
| Pen | Faster Pen | 1 Piece | 4.96 | 5.37 | 8.12 | 4.94 | 5.43 | 9.92 | 4.99 | 5.30 | 6.33 |
| Recordable CD | Recordable CD / Blank CD | 1 Piece | 4.59 | 4.85 | 5.62 | 4.17 | 4.47 | 7.12 | 5.00 | 5.22 | 4.37 |
| Sanitary pads | Stay Free | 1 Packet | 13.17 | 15.07 | 14.42 | 13.19 | 15.37 | 16.57 | 13.16 | 14.78 | 12.27 |
| Sanitary pads | Riaa | 1 Packet | 16.45 | 14.91 | -9.36 | 17.03 | 13.65 | -19.84 | 15.87 | 16.17 | 1.88 |
| Shampoo | Emerone | 200 ML | 19.24 | 25.90 | 34.64 | 18.11 | 25.03 | 38.24 | 20.36 | 26.76 | 31.43 |

| Description | Specification | Unit | National - Annualized | | | Male' - Annualized | | | Atolls - Annualized | | |
|-------------|-----------------------------|----------|---------------------------|---------------------------|-------|---------------------------|---------------------------|-------|---------------------------|---------------------------|-------|
| | | | Average 12 monthly price | | | Average 12 monthly price | | | Average 12 monthly price | | |
| | | | Aujust 2010- July 2011 | August 2011- July 2012 | % Chn | Aujust 2010- July 2011 | August 2011- July 2012 | % Chn | Aujust 2010- July 2011 | August 2011- July 2012 | % Chn |
| Shampoo | Head & shoulders | 200 MI | 32.26 | 38.89 | 20.56 | 32.14 | 40.11 | 24.79 | 32.38 | 37.68 | 16.36 |
| Shampoo | Pantene Pro vitamin | 200 MI | 30.93 | 35.86 | 15.94 | 29.42 | 35.82 | 21.77 | 32.44 | 35.90 | 10.66 |
| Soap | Lux Soap | 100 Gram | 4.82 | 5.82 | 20.76 | 4.64 | 6.07 | 30.91 | 5.00 | 5.57 | 11.34 |
| Text books | English Pupils Book Grade 7 | 1 Book | 18.00 | 18.26 | 1.46 | 18.00 | 18.53 | 2.92 | 18.00 | 18.00 | 0.00 |
| Toothpaste | Aqua fresh, | 50 MI | 15.11 | 16.00 | 5.88 | 14.64 | 15.51 | 5.92 | 15.58 | 16.49 | 5.85 |
| Toothpaste | Colgate | 50 MI | 12.38 | 14.05 | 13.48 | 11.66 | 13.10 | 12.36 | 13.10 | 14.99 | 14.47 |

Annex 3: Average month on month prices of of selected Items, CPI National, Male' & Atolls, July 2011

| Description | Specification | Unit | National - Month on Month | | | Male' - Month on Month | | | Atolls - Month on Month | | |
|------------------------|---|-------------------|---------------------------|--------|--------|------------------------|--------|--------|-------------------------|--------|--------|
| | | | Average Price | | | Average Price | | | Average Price | | |
| | | | Jul-11 | Jul-12 | % Chn | Jul-11 | Jul-12 | % Chn | Jul-11 | Jul-12 | % Chn |
| Food | | | | | | | | | | | |
| Apple | Apple | 1 Piece | 5.20 | 5.51 | 5.83 | 4.71 | 5.26 | 11.80 | 5.70 | 5.75 | 0.89 |
| Aracanut | Raw Aracanut / Uncut / Loose | 1 kg | 89.12 | 99.23 | 11.34 | 93.29 | 88.64 | -4.98 | 84.94 | 109.81 | 29.28 |
| Baby food - cereal | Nestum / Wheat & Honey | 250 Gram / Tin | 42.75 | 51.55 | 20.57 | 42.88 | 52.51 | 22.44 | 42.62 | 50.59 | 18.68 |
| Baby food - cereal | Promina / Banana | 250 Gram / Packet | 19.21 | 21.52 | 12.05 | 18.71 | 21.36 | 14.15 | 19.70 | 21.69 | 10.06 |
| Baby food - fruit | Purity / Fruit / Second food | 200ml, Bottle | - | - | - | 23.83 | 27.17 | 13.99 | - | - | - |
| Baby milk powder | Lactogen | 450 Gram, tin | 72.32 | 76.42 | 5.67 | 70.56 | 74.68 | 5.84 | 74.08 | 78.16 | 5.50 |
| Baby milk powder | Anface | 450 Gram / Tin | 167.07 | 164.67 | -1.44 | 168.31 | 160.34 | -4.74 | 165.83 | 169.00 | 1.91 |
| Baby milk powder | S.M.A / Progress | 450 Gram / Tin | 124.24 | 125.08 | 0.68 | 122.85 | 121.20 | -1.35 | 125.63 | 128.96 | 2.66 |
| Banana | Bonthiraiy | 1 Piece | 1.72 | 2.41 | 40.14 | 1.82 | 2.75 | 51.23 | 1.61 | 2.06 | 27.65 |
| Beans | Fresh Beans | 1 kg | 65.56 | 54.19 | -17.35 | 56.12 | 58.37 | 4.02 | 75.00 | 50.00 | -33.33 |
| Biscuits | Cream Cracker, Khong Guan | 200 gram, packet | 11.60 | 13.15 | 13.41 | 11.44 | 13.20 | 15.35 | 11.75 | 13.11 | 11.52 |
| Biscuits | Marie Biscuit | 400 Gram | 19.24 | 23.05 | 19.77 | 18.76 | 21.50 | 14.62 | 19.73 | 24.60 | 24.65 |
| Bread | Small Bread | 1 Piece | 11.50 | 12.50 | 8.69 | 12.19 | 12.54 | 2.82 | 10.80 | 12.46 | 15.32 |
| Bread | Large | 1 Piece | 19.38 | 19.82 | 2.28 | 23.23 | 23.25 | 0.07 | 15.53 | 16.39 | 5.58 |
| Bread spread | Chocolate Crumpy | 225 Gram | 37.87 | 46.44 | 22.63 | 36.00 | 43.47 | 20.74 | 39.74 | 49.41 | 24.33 |
| Bun | Small Buns/ Un packed | 1 Piece | 0.78 | 0.76 | -2.45 | 0.55 | 0.54 | -1.96 | 1.01 | 0.98 | -2.72 |
| Butter bun | butter buns / Packed | 1 Piece | 4.46 | 4.29 | -3.72 | 4.05 | 4.16 | 2.68 | 4.87 | 4.43 | -9.04 |
| Cabbage | Fresh Cabbage | 1 kg | 36.67 | 39.69 | 8.21 | 36.68 | 37.50 | 2.23 | 36.67 | 41.87 | 14.20 |
| Candy | Solano | 1 Piece / 25 Gram | 0.39 | 0.39 | -1.30 | 0.38 | 0.32 | -15.47 | 0.40 | 0.45 | 12.02 |
| Canned baked beans | Baked Beans / Canned | 400 Gram | 12.92 | 14.59 | 12.86 | 13.00 | 14.58 | 12.13 | 12.84 | 14.59 | 13.60 |
| Canned green peas | Green peas / Processed peas / Canned | 440 Gram | 8.52 | 10.93 | 28.29 | 9.04 | 11.87 | 31.19 | 8.00 | 10.00 | 25.00 |
| Canned mixed fruits | Canned Mixed Fruit / Small | 398 Gram | 30.53 | 28.11 | -7.93 | 31.20 | 24.95 | -20.02 | 29.87 | 31.27 | 4.70 |
| Canned pineapple | Canned Pineapple | 567 Gram | 16.81 | 23.58 | 40.27 | 15.86 | 23.14 | 45.93 | 17.76 | 24.02 | 35.23 |
| Carrot | Fresh Carrot | 1 kg | 32.07 | 58.37 | 82.03 | 24.13 | 64.41 | 166.88 | 40.00 | 52.33 | 30.83 |
| Chicken drumsticks | Chicken drumstick | 1 kg | 61.44 | 71.11 | 15.74 | 61.44 | 71.11 | 15.74 | - | - | - |
| Chicken sausage | Chicken Sausage / Packed | 340 Gram | 21.33 | 23.59 | 10.57 | 20.17 | 21.18 | 5.00 | 22.50 | 26.00 | 15.56 |
| Chilli powder | Chilli Powder / Packed Locally | 50 Gram | 6.68 | 7.88 | 17.87 | 6.33 | 7.16 | 13.01 | 7.03 | 8.60 | 22.24 |
| Cigarette | Marlboro | 20 Piece / 1 Pack | 22.45 | 39.19 | 74.61 | 22.11 | 38.66 | 74.83 | 22.78 | 39.73 | 74.40 |
| Cigarette | Benson | 20 Piece / 1 Pack | 21.54 | 35.46 | 64.59 | 22.11 | 38.66 | 74.83 | 20.97 | 32.25 | 53.79 |
| Coconut | Medium size / Coconut | 1 Piece | 6.37 | 4.32 | -32.23 | 6.37 | 4.32 | -32.23 | - | - | - |
| Coffee | Nescafe, Cafe' soluble coffee / Canned | 50 Gram | 37.03 | 41.04 | 10.83 | 37.90 | 40.22 | 6.11 | 36.16 | 41.87 | 15.78 |
| Coke | Dubai coke / Canned | 300 Ml | 9.84 | 11.43 | 16.17 | 9.71 | 11.09 | 14.21 | 9.97 | 11.77 | 18.08 |
| Coke | Coca Cola / Large Bottle | 1500 Ml | 29.95 | 30.84 | 2.94 | 27.91 | 29.52 | 5.76 | 32.00 | 32.15 | 0.48 |
| Condensed milk | Double Peach | 397Gram, tin | 14.20 | 16.13 | 13.61 | 14.19 | 16.12 | 13.60 | 14.21 | 16.14 | 13.61 |
| Condensed milk | Cow Bell | 397 Gram / Tin | 13.31 | 15.73 | 18.16 | 12.84 | 15.49 | 20.63 | 13.78 | 15.97 | 15.87 |
| Cooking oil | Bemoli Oil | 2 Ltr | 68.95 | 64.06 | -7.10 | 68.66 | 62.51 | -8.96 | 69.24 | 65.61 | -5.25 |
| Cooking oil | Sun Flower Oil | 2 Ltr | 89.92 | 91.95 | 2.25 | 95.52 | 88.76 | -7.08 | 84.33 | 95.14 | 12.82 |
| Cucumber | Fresh Cucumber | 1 kg | 19.49 | 28.85 | 48.06 | 22.22 | 34.96 | 57.32 | 16.75 | 22.74 | 35.77 |
| Curry powder | Curry Powder / Antelope brand / Canned | 340 Gram | 34.01 | 41.95 | 23.37 | 35.01 | 42.03 | 20.05 | 33.00 | 41.87 | 26.89 |
| Curry powder | Fish curry powder / Packed locally | 50 Gram | 6.33 | 7.52 | 18.86 | 6.09 | 7.25 | 19.10 | 6.56 | 7.79 | 18.65 |
| Curry powder | Chicken curry powder / Packed locally | 50 Gram | 6.62 | 7.69 | 16.15 | 6.45 | 7.12 | 10.32 | 6.78 | 8.26 | 21.69 |
| Dairy milk | Dutch Lady / Milk Pack / Small | 250 Ml | 9.08 | 10.21 | 12.45 | 9.29 | 9.76 | 5.06 | 8.86 | 10.65 | 20.19 |
| Dates | Dates without nuts | 200 Gram / pack | - | - | - | 26.67 | 31.30 | 17.38 | - | - | - |
| Dhal | Yellow Colored Dhal | 1 kg | 48.88 | 47.75 | -2.32 | 46.57 | 46.33 | -0.51 | 51.19 | 49.17 | -3.95 |
| Dried Chilli | Dried Chilli (Hikimirus) / Loose | 1 kg | 67.50 | 90.08 | 33.45 | 67.50 | 97.92 | 45.07 | 67.50 | 82.24 | 21.83 |
| Egg | Chicken egg / Imported | 1 Piece | 1.98 | 1.94 | -1.69 | 2.00 | 1.87 | -6.64 | 1.95 | 2.02 | 3.38 |
| Flour | Ordinary Flour / loose | 1 kg | 4.16 | 4.32 | 3.79 | 3.42 | 3.86 | 12.84 | 4.90 | 4.78 | -2.53 |
| Frozen beef | Frozen Beef | 1 kg | 60.91 | 49.54 | -18.67 | 56.82 | 70.32 | 23.76 | 65.00 | 28.76 | -55.76 |
| Frozen chicken | Frozen chicken / Whole chicken / Pre p 1 kg | 1 kg | 53.49 | 50.60 | -5.41 | 51.87 | 45.24 | -12.79 | 55.11 | 55.96 | 1.54 |
| Garlic | Garlic | 100 Gram | 7.13 | 4.48 | -37.18 | 5.13 | 3.81 | -25.77 | 9.13 | 5.15 | -43.58 |
| Ginger | Ginger | 100 Gram | 5.83 | 5.22 | -10.56 | 4.14 | 3.70 | -10.69 | 7.52 | 6.73 | -10.48 |
| Githayo Mirus | Dhivehi mirus | 1 Piece | 2.65 | 3.32 | 25.28 | 2.62 | 3.31 | 26.32 | 2.68 | 3.33 | 24.26 |
| Green chilli | Green Chilli / Imported | 100 Gram | 12.21 | 20.75 | 69.92 | 6.09 | 9.60 | 57.61 | 18.33 | 31.90 | 74.01 |
| Jam | Tova Brand / Bottle | 450 Gram | 22.33 | 25.72 | 15.17 | 22.29 | 24.82 | 11.38 | 22.38 | 26.62 | 18.96 |
| Juice-Foster Clark | Foster Clark / Powdered Juice / Bottled | 750 Gram | 62.47 | 67.11 | 7.42 | 62.89 | 65.49 | 4.14 | 62.06 | 68.73 | 10.75 |
| Juice-Sun quick | Sun quick / Orange Juice / Bottled | 840 Ml | 64.32 | 80.06 | 24.48 | 63.46 | 80.65 | 27.09 | 65.18 | 79.47 | 21.93 |
| lemon | Imported lemon | 1 Piece | 2.06 | 2.33 | 12.89 | 1.85 | 2.34 | 26.96 | 2.28 | 2.31 | 1.50 |
| Mango | Fresh / local / Mango | 1 Piece | - | - | - | 6.67 | 9.00 | 35.00 | - | - | - |
| Margarine | Daisy brand tub / Small | 250 Gram | 24.27 | 27.42 | 12.97 | 24.04 | 26.45 | 10.03 | 24.51 | 28.39 | 15.86 |
| Milk powder | Coast | 1800 Gram, tin | 247.42 | 254.67 | 2.93 | 250.10 | 240.85 | -3.70 | 244.75 | 268.49 | 9.70 |
| Milk powder | Anchor Milk | 1800 Gram / Tin | 235.43 | 259.05 | 10.03 | 252.05 | 276.91 | 9.86 | 218.82 | 241.19 | 10.22 |
| Milk powder | Nido | 1800 Gram / Tin | 226.34 | 265.45 | 17.28 | 225.58 | 264.28 | 17.16 | 227.09 | 266.62 | 17.41 |
| Milo | Nestle Milo Powder / Canned | 400 Gram | 67.94 | 84.15 | 23.86 | 70.77 | 85.39 | 20.66 | 65.11 | 82.91 | 27.34 |
| Mixed fresh vegetables | Mixed Vegetables | 1 kg | 39.81 | 48.83 | 22.65 | 40.06 | 53.25 | 32.92 | 39.56 | 44.41 | 12.25 |
| Noodles | Mamee Noodles / Packet | 85 Gram | 4.36 | 4.53 | 3.84 | 4.12 | 4.14 | 0.43 | 4.60 | 4.92 | 6.89 |
| Onion | Imported Onion | 1 kg | 18.76 | 12.45 | -33.65 | 16.81 | 12.35 | -26.51 | 20.72 | 12.55 | -39.45 |

| Description | Specification | Unit | National - Month on Month | | | Male' - Month on Month | | | Atolls - Month on Month | | |
|-----------------------------------|---|--------------------|---------------------------|---------|--------|------------------------|---------|--------|-------------------------|---------|--------|
| | | | Average Price | | | Average Price | | | Average Price | | |
| | | | Jul-11 | Jul-12 | % Chn | Jul-11 | Jul-12 | % Chn | Jul-11 | Jul-12 | % Chn |
| Orange | Fresh Orange | 1 Piece | 4.19 | 4.62 | 10.34 | 3.19 | 4.01 | 25.63 | 5.19 | 5.24 | 0.94 |
| Potato | Imported Potato | 1 kg | 14.63 | 14.21 | -2.83 | 12.93 | 12.95 | 0.16 | 16.33 | 15.48 | -5.19 |
| Rice | Ordinary Rice / loose | 1 kg | 4.93 | 5.04 | 2.32 | 4.35 | 4.56 | 4.68 | 5.50 | 5.53 | 0.45 |
| Rice-Basmati | Basmati Rice / Pre Packed | 1 kg | 25.95 | 29.15 | 12.30 | 24.11 | 29.00 | 20.25 | 27.80 | 29.30 | 5.41 |
| Salt | Fine Salt / Packed | 500 Gram | 5.22 | 5.44 | 4.16 | 4.96 | 5.25 | 5.86 | 5.48 | 5.62 | 2.62 |
| Saltish short-eats | Handulu gulha | 1 Piece | 1.83 | 1.42 | -22.73 | 2.00 | 1.17 | -41.67 | 1.67 | 1.67 | 0.00 |
| Sauce | Tomato Sauce / life Brand | 320 Gram / Bottled | 11.55 | 14.00 | 21.18 | 11.23 | 14.91 | 32.73 | 11.88 | 13.09 | 10.26 |
| Sauce | Chillie Sauce / life Brand | 335 Gram / Bottled | 12.78 | 15.31 | 19.81 | 13.12 | 16.56 | 26.21 | 12.43 | 14.05 | 13.06 |
| Sauce | Chillie & Garlic Sauce / life Brand | 320 Gram / Bottled | 13.53 | 15.87 | 17.31 | 13.96 | 17.24 | 23.50 | 13.09 | 14.49 | 10.70 |
| Sugar | Dhoabraali Hakuru | 1 kg | 5.01 | 5.02 | 0.35 | 4.46 | 4.57 | 2.68 | 5.56 | 5.47 | -1.52 |
| Sweet short-eats | Foni folhi | 1 Piece | 2.06 | 2.35 | 14.49 | 2.00 | 2.37 | 18.67 | 2.11 | 2.33 | 10.53 |
| Tea leaves-loose | Ceylon Tea Leaves (loose) | 1 kg | 52.24 | 47.66 | -8.76 | 49.22 | 46.67 | -5.19 | 55.25 | 48.65 | -11.94 |
| Tea leaves-tea bag | Today's Taste / 100 tea bag | 200 Gram | 30.69 | 34.89 | 13.69 | 31.95 | 34.48 | 7.90 | 29.42 | 35.30 | 19.99 |
| Tea leaves-tea bag | Melesna / 100 tea bag | 200 Gram | 34.82 | 36.91 | 6.03 | 36.97 | 43.16 | 16.77 | 32.67 | 30.67 | -6.12 |
| Tea leaves-tea bag | Akbar / 100 tea bag | 200 Gram | 33.70 | 36.83 | 9.30 | 34.33 | 35.25 | 2.66 | 33.06 | 38.42 | 16.19 |
| Tomato | Fresh Tomato | 1Kg | 33.18 | 37.20 | 12.13 | 33.02 | 40.00 | 21.12 | 33.33 | 34.41 | 3.22 |
| Tomato paste | Tomato Paste / Small can | 70 Gram | 2.86 | 2.95 | 3.06 | 2.64 | 2.88 | 9.12 | 3.09 | 3.03 | -2.10 |
| Watermelon | Water melon (fresh Locally produced) | 1 kg | - | - | - | 14.51 | 20.73 | 42.87 | - | - | - |
| Fish | | | | | | | | | | | |
| Canned fish in brine | Felivaru Canned Fish / Chunk in Brine | 185 Gram | 16.17 | 18.17 | 12.40 | 16.63 | 17.59 | 5.79 | 15.71 | 18.75 | 19.39 |
| Canned fish in oil | Felivaru canned fish / Chunk in Oil | 185 Gram | 18.31 | 19.19 | 4.78 | 18.13 | 18.64 | 2.83 | 18.50 | 19.74 | 6.68 |
| Dried fish chips | Pre packed Dried fish chips | 100 Gram | 16.00 | 12.12 | -24.24 | 16.00 | 12.12 | -24.24 | - | - | - |
| Fish paste | Fasmeeru Rihaakuru / Bottled | 450 Gram | 33.20 | 35.57 | 7.14 | 33.20 | 35.57 | 7.14 | - | - | - |
| Other tuna | Other Tuna / Latti | 1 kg | 38.91 | 97.79 | 151.32 | 38.91 | 97.79 | 151.32 | - | - | - |
| Reef fish | Reef Fish / Maaniya mas | 1 kg | 36.51 | 35.17 | -3.67 | 36.51 | 35.17 | -3.67 | - | - | - |
| Skipjack tuna | Godha / Kalhubilamas | 1 kg | 69.78 | 114.73 | 64.42 | 69.78 | 114.73 | 64.42 | - | - | - |
| Smoked fish | Smoked Fish (Valhoamas) / Loose | 1 kg | 110.99 | 150.72 | 35.79 | 91.98 | 151.43 | 64.63 | 130.00 | 150.00 | 15.38 |
| Clothing and Footwear | | | | | | | | | | | |
| Dress material | Most often sold material / Plane / Faat 1 Muh | | 26.99 | 34.27 | 26.98 | 27.47 | 39.04 | 42.09 | 26.50 | 29.50 | 11.32 |
| Dress material | Most often sold material / Design / Faa 1 Muh | | 32.17 | 33.33 | 3.63 | 40.00 | 38.00 | -5.00 | 24.33 | 28.67 | 17.81 |
| Men's jeans | Mend's Jeans / Most Sold Material | 1 Piece | 232.63 | 274.67 | 18.07 | 236.51 | 313.00 | 32.34 | 228.75 | 236.35 | 3.32 |
| Men's sandals | Most recently sold brand | 1 Pair | 219.44 | 243.87 | 11.13 | 176.67 | 203.67 | 15.28 | 262.22 | 284.08 | 8.33 |
| Men's shirt | Men T-Shirt / Most Sold material | 1 Piece | 193.13 | 215.97 | 11.83 | 182.50 | 238.50 | 30.68 | 203.75 | 193.44 | -5.06 |
| Men's shoes | Office Shoes | 1 Pair | - | - | - | 275.00 | 393.00 | 42.91 | - | - | - |
| Men's trousers | Men's Trousers / Long | 1 Piece | 210.88 | 252.87 | 19.91 | 198.85 | 252.14 | 26.80 | 222.92 | 253.60 | 13.76 |
| Mens t-shirt | Men Shirt / Most Sold Brand | 1 Piece | 166.22 | 204.94 | 23.29 | 156.82 | 198.80 | 26.77 | 175.63 | 211.08 | 20.19 |
| Nylon faivaan | Size 10 | 1 Pair | 14.71 | 14.87 | 1.10 | 13.45 | 14.10 | 4.87 | 15.98 | 15.64 | -2.07 |
| School shoes | School Shoes/ Girl / Most recently sold | 1 Pair | 154.58 | 186.07 | 20.37 | 155.00 | 193.33 | 24.73 | 154.17 | 178.80 | 15.98 |
| School uniform | School Uniform / Boys / Medium size 1 | 1 Piece | 106.25 | 121.90 | 14.73 | 102.50 | 121.90 | 18.93 | 110.00 | 121.90 | 10.82 |
| Sport shoes | Diadora / Indoor tennis shoes / Men | 1 Pair | 350.94 | 397.10 | 13.15 | 272.50 | 365.70 | 34.20 | 429.38 | 428.50 | -0.20 |
| Tailoring national dress | National dress / Unstretch Material | 1 Piece | 119.11 | 127.79 | 7.28 | 140.00 | 150.00 | 7.14 | 98.23 | 105.58 | 7.48 |
| Tailoring women's blouse | Sewing of blouse | 1 Piece | 72.92 | 73.50 | 0.80 | 75.00 | 75.00 | 0.00 | 70.83 | 72.01 | 1.65 |
| Women's jeans | Women's Jeans / Fade | 1 Piece | 191.46 | 219.48 | 14.64 | 201.67 | 236.67 | 17.36 | 181.25 | 202.30 | 11.61 |
| Women's sandals | Casual (home-wear) | 1 Piece | 133.13 | 173.39 | 30.25 | 130.00 | 200.33 | 54.10 | 136.25 | 146.45 | 7.49 |
| Women's t-shirt | Ladies T - shirt / Most sold Brand | 1 Piece | 160.80 | 172.88 | 7.51 | 179.10 | 199.13 | 11.18 | 142.50 | 146.62 | 2.89 |
| Housing | | | | | | | | | | | |
| Battery | "D" Size Battery / 555 Brand | 1 Piece | 3.28 | 3.82 | 16.38 | 3.05 | 3.72 | 21.86 | 3.52 | 3.93 | 11.64 |
| Bed sheet | Single Bed sheet / Ordinary brand | 1 Piece | 63.26 | 73.37 | 15.97 | 39.24 | 62.97 | 60.47 | 87.29 | 83.77 | -4.03 |
| Cement | Cement bag | 50 kg | 104.75 | 124.44 | 18.80 | 97.00 | 122.00 | 25.77 | 112.50 | 126.89 | 12.79 |
| Chair | Plastic Chair / large / without handle | 1 Piece | 147.08 | 196.54 | 33.62 | 130.00 | 175.00 | 34.62 | 164.17 | 218.08 | 32.84 |
| Fan | Electric fan (Ceiling) / Usha Brand / 43 | 1 Piece | 463.19 | 500.66 | 8.09 | 470.00 | 441.74 | -6.01 | 456.38 | 559.58 | 22.61 |
| Glasses | Plain Glass / Medium Size | 1 Piece | 7.18 | 8.18 | 13.90 | 6.83 | 7.13 | 4.43 | 7.54 | 9.23 | 22.46 |
| Insecticides | Insecticides / Mosfly Brand / Small Boti 400 MI | | 40.24 | 44.81 | 11.35 | 39.39 | 43.81 | 11.22 | 41.09 | 45.81 | 11.47 |
| Iron | Electric Iron / Phillip brand / 1000 V | 1 Piece | 283.61 | 304.67 | 7.42 | 250.00 | 258.75 | 3.50 | 317.22 | 350.58 | 10.52 |
| Light tube | Fluorescent tube / 2 feet / White Color | 1 Piece | 14.03 | 16.50 | 17.54 | 13.45 | 18.42 | 36.99 | 14.62 | 14.57 | -0.36 |
| Linoleum | Aadhaige Tharafaalu (linoleum) | 1 Feet | 10.50 | 14.55 | 38.57 | 11.00 | 17.10 | 55.45 | 10.00 | 12.00 | 20.00 |
| Mattress | Single / kurlon or Temptation | 1 Piece | 2592.50 | 2677.50 | 3.28 | 3250.00 | 3420.00 | 5.23 | 1935.00 | 1935.00 | 0.00 |
| Paint | Wall Paint | 5 litre | 152.50 | 167.76 | 10.01 | 175.00 | 198.53 | 13.44 | 130.00 | 137.00 | 5.38 |
| Plywood | 3 mm | 1 Piece | 119.17 | 140.19 | 17.65 | 126.67 | 166.56 | 31.49 | 111.67 | 113.83 | 1.94 |
| Refrigerator | Forest free Refrigerator / 50 kg/ Hitachi | 1 Piece | 4444.08 | 6905.18 | 55.38 | 3989.00 | 7546.31 | 89.18 | 4899.15 | 6264.05 | 27.86 |
| Roofing sheet | 0.6 mm / 1 feet | 1 Piece | 22.50 | 32.95 | 46.46 | 23.50 | 30.24 | 28.68 | 21.50 | 35.67 | 65.89 |
| Single bed | Single bed / With fancy Plywood | 1 Piece | 1525.00 | 2092.50 | 37.21 | 1250.00 | 2385.00 | 90.80 | 1800.00 | 1800.00 | 0.00 |
| Stove | 2 Sided gas stove / Hitachi brand | 1 Piece | 477.19 | 501.78 | 5.15 | 450.00 | 507.93 | 12.87 | 504.38 | 495.63 | -1.73 |
| Washing power | Soklin Brand Washing powder Pack | 1 Kg | 27.16 | 30.59 | 12.64 | 21.57 | 23.10 | 7.07 | 32.74 | 38.09 | 16.31 |
| Washing power | B 29 Brand Washing powder Pack | 1 Kg | 23.26 | 27.91 | 19.95 | 20.13 | 23.36 | 16.03 | 26.40 | 32.45 | 22.94 |
| Water pump | Pedroller Water Pump / 1 inches | 1 Piece | 2585.92 | 3143.35 | 21.56 | 2950.00 | 3933.00 | 33.32 | 2221.83 | 2353.70 | 5.93 |
| Health | | | | | | | | | | | |
| Chest x-ray | Chest x-ray | Per test | 94.79 | 89.50 | -5.58 | 123.33 | 175.00 | 41.89 | 66.25 | 4.00 | -93.96 |
| Dental service (ordinary filling) | Dental Service / Ordinary Filling | Per Patient | 100.00 | 312.50 | 212.50 | 200.00 | 300.00 | 50.00 | - | - | - |

| Description | Specification | Unit | National - Month on Month | | | Male' - Month on Month | | | Atolls - Month on Month | | |
|---|--|---------------|---------------------------|----------|--------|------------------------|----------|-------|-------------------------|----------|-------|
| | | | Average Price | | | Average Price | | | Average Price | | |
| | | | Jul-11 | Jul-12 | % Chn | Jul-11 | Jul-12 | % Chn | Jul-11 | Jul-12 | % Chn |
| Diegen | Diegen / 200 ml | 1 Bottle | 27.44 | 35.65 | 29.95 | 29.50 | 38.33 | 29.94 | 25.38 | 32.97 | 29.95 |
| Doctor's consulting fee-gener consultation fee / General Doctor | | Per Patient | 90.63 | 100.00 | 10.34 | 81.25 | 100.00 | 23.08 | 100.00 | 100.00 | 0.00 |
| Doctor's consulting fee-specia | Doctor consultation fee / Specialist | Per Patient | 136.25 | 162.08 | 18.96 | 140.00 | 191.67 | 36.90 | 132.50 | 132.50 | 0.00 |
| Forcevel | Forcevel / 500 mg | 1 Tablet | 3.22 | 3.74 | 16.14 | 3.50 | 4.00 | 14.29 | 2.94 | 3.48 | 18.35 |
| Helibo orange | Helibo Orange / 200 ml | 1 Bottle | 42.32 | 53.37 | 26.10 | 48.00 | 58.33 | 21.53 | 36.64 | 48.40 | 32.08 |
| Panadol | Panadol / 500 mg | 1 Tablet | 0.44 | 0.46 | 4.60 | 0.50 | 0.50 | 0.67 | 0.37 | 0.41 | 9.86 |
| Vicks balm | Vicks Balm / 19 Gram | 1 Bottle | 10.50 | 14.53 | 38.38 | 11.00 | 15.00 | 36.36 | 10.00 | 14.06 | 40.61 |
| Vitamin C | Vitamin C / 500 mg | 1 Tablet | 0.79 | 0.91 | 15.87 | 1.00 | 1.00 | 0.00 | 0.58 | 0.83 | 43.48 |
| Transport | | | | | | | | | | | |
| Bicycle | Dahon | 1 Piece | 1625.00 | 1699.38 | 4.58 | 1850.00 | 1914.75 | 3.50 | 1400.00 | 1484.00 | 6.00 |
| Bicycle | Mountain | 1 Piece | 1225.00 | 1298.50 | 6.00 | 1225.00 | 1298.50 | 6.00 | - | - | - |
| Cleaning of motorcycle | Full cycle | Per vehicle | 77.50 | 82.50 | 6.45 | 77.50 | 82.50 | 6.45 | - | - | - |
| Motor cycle tyre | Back Tyre | 1 Piece | - | - | - | 670.00 | 710.00 | 5.97 | - | - | - |
| Motor cycle tyre | Front tyre | 1 Piece | - | - | - | 587.00 | 651.00 | 10.90 | - | - | - |
| Motorcycle | Honda Wave 125 I | 1 Piece | 24950.00 | 56480.33 | 126.37 | 49900.00 | 57028.00 | 14.28 | - | - | - |
| Motorcycle | Honda Wave 125 H | 1 Piece | 45983.33 | 51551.33 | 12.11 | 45200.00 | 50456.00 | 11.63 | 46766.67 | 52646.67 | 12.57 |
| Petrol | Petrol | 1 Ltr | 15.73 | 16.71 | 6.23 | 16.19 | 16.24 | 0.29 | 15.28 | 17.19 | 12.52 |
| Taxi fare | Taxi Fare | Per trip | 21.25 | 24.38 | 14.71 | 20.00 | 20.00 | 0.00 | 22.50 | 28.75 | 27.78 |
| Recreation and culture | | | | | | | | | | | |
| Aerobics | 1 hr class / 3 classes per week | Per Month | 320.00 | 371.00 | 15.94 | 320.00 | 371.00 | 15.94 | - | - | - |
| Audio album- CD | Audio CD / Hindi CD | 1 Piece | 30.00 | 31.50 | 5.00 | 45.00 | 48.00 | 6.67 | 15.00 | 15.00 | 0.00 |
| Audio album- CD | Audio CD / Dhivehi CD | 1 Piece | 100.00 | 106.08 | 6.08 | 100.00 | 106.08 | 6.08 | - | - | - |
| Cable TV charges | Cable Charges | Per Month | 225.00 | 232.73 | 3.43 | 250.00 | 250.00 | 0.00 | 200.00 | 215.45 | 7.73 |
| CD player | CD Player / Phillips Brand | 1 Piece | 921.32 | 961.34 | 4.34 | 1087.65 | 1141.24 | 4.93 | 755.00 | 781.44 | 3.50 |
| Color box | Swan Brand / Small Size / 12 Color | 1 Box | 10.60 | 23.37 | 120.52 | 21.20 | 31.58 | 48.97 | - | - | - |
| Glaze paper | Glaze Paper | 1 Piece | 1.87 | 2.42 | 29.51 | 1.51 | 2.07 | 37.19 | 2.23 | 2.78 | 24.31 |
| Monitor book | Exercise Book / 200 Pages | 1 Book | 13.67 | 17.00 | 24.36 | 13.00 | 18.28 | 40.60 | 14.33 | 15.71 | 9.63 |
| Pen | Red leaf Pen | 1 Piece | 4.83 | 5.16 | 6.71 | 4.67 | 5.25 | 12.50 | 5.00 | 5.07 | 1.30 |
| Pen | Faster Pen | 1 Piece | 5.05 | 5.67 | 12.45 | 5.00 | 5.95 | 19.00 | 5.09 | 5.40 | 6.03 |
| Hotel, cafes & restaurants | | | | | | | | | | | |
| Meals | 4 roshi / 1fish curry / 1 black tea / 1 dh | Per person | 18.00 | 23.32 | 29.56 | 18.00 | 23.32 | 29.56 | - | - | - |
| Meals | 4 roshi / 1 chicken curry / 1 black tea /: | Per person | 33.00 | 39.00 | 18.18 | 33.00 | 39.00 | 18.18 | - | - | - |
| Pizza | Tuna Mushroom | whole pizza | 78.33 | 90.03 | 14.94 | 78.33 | 90.03 | 14.94 | - | - | - |
| Restaurant meals | Fish & Chips | 1 plate | 50.00 | 62.87 | 25.73 | 50.00 | 62.87 | 25.73 | - | - | - |
| Restaurant meals | Nasi Goring | 1 plate | 55.00 | 66.67 | 21.21 | 55.00 | 66.67 | 21.21 | - | - | - |
| Miscellaneous | | | | | | | | | | | |
| Baby cologne | Baby Cheramy Cologne | 175 ml | 28.84 | 31.42 | 8.94 | 29.14 | 34.61 | 18.76 | 28.54 | 28.23 | -1.09 |
| Baby soap | Johnson Baby Soap | 100 Gram | 9.42 | 10.70 | 13.55 | 8.84 | 11.75 | 32.84 | 10.00 | 9.65 | -3.51 |
| Body lotion | Enchanteaur Lotion | 200 Ml | 31.51 | 36.77 | 16.69 | 30.67 | 35.92 | 17.12 | 32.36 | 37.63 | 16.27 |
| Cologne | Splash | 200 Ml | 22.73 | 26.10 | 14.82 | 22.09 | 24.06 | 8.93 | 23.37 | 28.13 | 20.40 |
| Cologne | Loviline | 175 ml | 23.65 | 26.22 | 10.87 | 25.93 | 26.16 | 0.89 | 21.36 | 26.27 | 22.98 |
| Cosmetic treatment | Cosmetic Treatment / Eye brought | Per time | 30.00 | 50.00 | 66.67 | 30.00 | 50.00 | 66.67 | - | - | - |
| Facial cream | Fair & Lovely / Facial Cream | 25 Gram | 18.37 | 22.78 | 24.00 | 16.96 | 23.28 | 37.28 | 19.79 | 22.29 | 12.61 |
| Hair cream | Max | 175 ml | 30.08 | 34.16 | 13.56 | 31.64 | 34.46 | 8.92 | 28.53 | 33.87 | 18.70 |
| Hair cream | Elite | 175 ml | 30.89 | 34.52 | 11.77 | 33.03 | 36.36 | 10.10 | 28.75 | 32.69 | 13.70 |
| Hair cream | Gatsby | 175 ml | 21.38 | 23.75 | 11.08 | 18.46 | 22.36 | 21.10 | 24.30 | 25.15 | 3.47 |
| Hair oil | Bertolli | 100 Ml,bottle | 27.67 | 26.71 | -3.49 | 27.57 | 25.40 | -7.89 | 27.78 | 28.02 | 0.88 |
| Haircut-female | Female Hair Cut | Per Person | 78.96 | 88.79 | 12.45 | 141.67 | 161.33 | 13.88 | 16.25 | 16.25 | 0.00 |
| Haircut-men | Male Hair Cut | Per Person | 28.13 | 36.88 | 31.11 | 43.75 | 60.00 | 37.14 | 12.50 | 13.75 | 10.00 |
| Sanitary pads | Stay Free | 1 Packet | 14.33 | 15.63 | 9.03 | 13.77 | 16.54 | 20.09 | 14.89 | 14.71 | -1.19 |
| Sanitary pads | Riaa | 1 Packet | 14.54 | 15.02 | 3.26 | 13.99 | 13.95 | -0.31 | 15.10 | 16.09 | 6.57 |
| Shampoo | Emerone | 200 Ml | 22.64 | 26.64 | 17.67 | 23.00 | 25.48 | 10.80 | 22.27 | 27.79 | 24.77 |
| Shampoo | Head & shoulders | 200 Ml | 33.90 | 38.67 | 14.10 | 34.45 | 38.37 | 11.36 | 33.34 | 38.98 | 16.92 |
| Shampoo | Pantene Pro vitamin | 200 Ml | 31.66 | 37.93 | 19.82 | 30.19 | 38.49 | 27.47 | 33.13 | 37.38 | 12.84 |
| Soap | Lux Soap | 100 Gram | 4.99 | 6.41 | 28.48 | 4.81 | 6.96 | 44.83 | 5.18 | 5.86 | 13.29 |
| Toothpaste | Aqua fresh, | 50 Ml | 15.55 | 16.29 | 4.74 | 15.20 | 15.74 | 3.58 | 15.90 | 16.83 | 5.86 |
| Toothpaste | Colgate | 50 Ml | 12.01 | 15.08 | 25.61 | 9.99 | 13.96 | 39.80 | 14.03 | 16.20 | 15.52 |

| | | | Consumer Price Index - CPI (June 2004 =100) | | | | | | | | | | | | | | | % change in Consumer Price Index - CPI | | | | | | | | | | | | | | | | | | | | |
|--------------------------|--|--------|--|----------------------|--------------------------------------|-----------------------------------|----------|------------|------------------------|---|----------------------------|--|-----------|--------------|------------------|-------------------------|---------------|--|------------------------------------|------------------------|-------|----------------------|-----------------------------------|-----------------------------------|-------|---------|---------------------|--|----------------------------|---|--------|-----------|---------------|----------------------|-----------|-----------------------------|--------------------------------|--------------------|
| | | | Total | Total Excluding Fish | 1. Food and beverages Including Fish | Food and beverages Excluding Fish | 1.1 Fish | 2. Tobacco | 3. Clothing & footwear | 4. Housing, water, electricity, gas & other fuels | Actual rentals for housing | 5. Furnishing, household equipments & routine maintenance of | 6. Health | 7. Transport | 8. Communication | 9. Recreation & culture | 10. Education | 11. Hotels, cafes & restaurants | 12. Miscellaneous goods & services | 13. Religious activity | Total | Total Excluding Fish | Food and beverages Including Fish | Food and beverages Excluding Fish | Fish | Tobacco | Clothing & footwear | Housing, water, electricity, gas & other fuels | Actual rentals for housing | Furnishing, household equipments & routine maintenance of | Health | Transport | Communication | Recreation & culture | Education | Hotels, cafes & restaurants | Miscellaneous goods & services | Religious activity |
| Weights | | 100.00 | 95.44 | 33.31 | 28.75 | 4.56 | 2.76 | 5.96 | 19.48 | 7.17 | 5.30 | 5.42 | 5.07 | 5.83 | 4.94 | 3.15 | 0.77 | 7.92 | 0.11 | 100.00 | 95.44 | 33.31 | 28.75 | 4.56 | 2.76 | 5.96 | 19.48 | 7.17 | 5.30 | 5.42 | 5.07 | 5.83 | 4.94 | 3.15 | 0.77 | 7.92 | 0.11 | |
| 2009 | | 132.09 | 132.12 | 150.02 | 152.96 | 131.51 | 115.29 | 112.23 | 136.55 | 143.81 | 134.97 | 142.90 | 149.46 | 65.87 | 93.99 | 135.05 | 141.33 | 116.65 | 100.00 | 3.98 | 4.98 | 1.48 | 3.90 | -13.35 | -2.09 | 2.98 | 7.57 | 14.29 | 9.64 | 2.54 | 0.47 | -0.46 | 3.52 | 23.75 | 2.57 | 5.99 | 0.00 | |
| 2010 | | 140.82 | 140.83 | 157.86 | 160.72 | 140.70 | 113.54 | 114.77 | 145.73 | 153.04 | 143.62 | 155.76 | 154.82 | 65.96 | 98.73 | 144.74 | 145.89 | 122.48 | 100.00 | 6.61 | 6.59 | 5.23 | 5.07 | 6.98 | -1.51 | 2.26 | 6.72 | 6.42 | 6.41 | 9.00 | 3.59 | 0.14 | 5.04 | 7.18 | 3.23 | 5.00 | 0.00 | |
| 2011 | | 158.89 | 155.02 | 188.81 | 180.70 | 239.89 | 145.24 | 128.41 | 150.45 | 161.11 | 157.15 | 170.00 | 175.52 | 65.98 | 101.09 | 167.19 | 168.68 | 133.03 | 100.00 | 12.83 | 10.08 | 19.60 | 12.43 | 70.50 | 27.91 | 11.89 | 3.24 | 5.27 | 9.42 | 9.15 | 13.37 | 0.02 | 2.39 | 15.51 | 15.62 | 8.61 | 0.00 | |
| August 2010 to July 2011 | | 148.40 | 146.49 | 171.84 | 169.21 | 188.37 | 121.52 | 119.45 | 148.38 | 157.36 | 148.63 | 161.99 | 163.47 | 66.04 | 100.02 | 158.36 | 151.88 | 125.95 | 100.00 | | | | | | | | | | | | | | | | | | | |
| August 2011 to July 2012 | | 171.70 | 163.35 | 212.16 | 190.87 | 346.36 | 202.00 | 140.96 | 152.93 | 164.50 | 174.75 | 174.48 | 189.62 | 65.71 | 100.91 | 180.62 | 198.54 | 146.10 | 100.00 | 15.70 | 11.51 | 23.47 | 12.80 | 83.87 | 66.23 | 18.01 | 3.06 | 4.54 | 17.58 | 7.71 | 16.00 | -0.51 | 0.89 | 14.06 | 30.72 | 15.99 | 0.00 | |
| July 2012 / July 2011 | | | | | | | | | | | | | | | | | | | 10.13 | 5.85 | 16.90 | 6.50 | 55.67 | 54.43 | 13.22 | 4.93 | 6.01 | 19.93 | 2.51 | 9.46 | -0.75 | 1.52 | 13.77 | 25.18 | 13.91 | 0.00 | | |
| 2011 July | | 162.93 | 156.05 | 198.73 | 181.56 | 306.97 | 143.93 | 130.06 | 148.38 | 159.46 | 152.69 | 169.64 | 178.30 | 66.15 | 99.61 | 167.19 | 166.11 | 131.62 | 100.00 | 2.43 | 1.79 | 3.39 | 1.79 | 9.80 | 1.92 | 0.84 | -1.11 | 0.08 | -0.38 | -0.60 | 0.00 | -0.32 | -0.47 | 0.00 | 0.00 | -0.02 | 0.00 | |
| Aug | | 163.27 | 158.65 | 197.71 | 187.83 | 259.96 | 146.06 | 131.30 | 149.32 | 160.08 | 155.45 | 169.61 | 179.54 | 66.09 | 99.82 | 167.19 | 166.11 | 134.10 | 100.00 | 0.21 | 1.67 | -0.52 | 3.45 | -15.31 | 1.48 | 0.95 | 0.63 | 0.39 | 1.81 | -0.02 | 0.70 | -0.09 | 0.22 | 0.00 | 0.00 | 1.88 | 0.00 | |
| Sep | | 165.74 | 160.45 | 200.99 | 189.03 | 276.37 | 155.21 | 133.60 | 149.63 | 160.48 | 158.75 | 177.07 | 179.94 | 66.09 | 100.81 | 167.19 | 179.50 | 136.82 | 100.00 | 1.51 | 1.13 | 1.66 | 0.64 | 6.31 | 6.26 | 1.75 | 0.21 | 0.25 | 2.13 | 4.40 | 0.22 | 0.00 | 0.99 | 0.00 | 8.07 | 2.03 | 0.00 | |
| ober | | 165.55 | 163.15 | 194.05 | 190.59 | 215.82 | 164.52 | 139.92 | 150.16 | 161.65 | 168.65 | 177.21 | 187.63 | 65.61 | 102.63 | 167.19 | 186.97 | 142.08 | 100.00 | -0.11 | 1.68 | -3.45 | 0.83 | -21.91 | 6.00 | 4.73 | 0.35 | 0.73 | 6.23 | 0.08 | 4.27 | -0.72 | 1.80 | 0.00 | 4.16 | 3.84 | 0.00 | |
| Nov | | 171.90 | 164.97 | 210.17 | 193.25 | 316.80 | 162.25 | 138.69 | 152.66 | 162.76 | 172.51 | 177.86 | 188.37 | 65.61 | 102.81 | 167.19 | 200.81 | 144.48 | 100.00 | 3.83 | 1.12 | 8.31 | 1.40 | 46.79 | -1.38 | -0.87 | 1.67 | 0.69 | 2.29 | 0.37 | 0.39 | 0.00 | 0.18 | 0.00 | 7.40 | 1.69 | 0.00 | |
| Dec | | 173.53 | 167.69 | 210.13 | 196.53 | 295.81 | 224.88 | 137.90 | 152.89 | 163.04 | 172.00 | 177.74 | 189.25 | 65.61 | 102.03 | 167.19 | 200.81 | 144.70 | 100.00 | 0.95 | 1.65 | -0.02 | 1.69 | -6.63 | 38.60 | -0.57 | 0.15 | 0.17 | -0.30 | -0.07 | 0.47 | 0.00 | -0.76 | 0.00 | 0.00 | 0.16 | 0.00 | |
| 2012 Jan | | 173.40 | 163.18 | 219.06 | 192.38 | 387.21 | 228.71 | 141.53 | 153.04 | 164.20 | 177.74 | 172.37 | 190.86 | 65.61 | 99.90 | 190.21 | 203.24 | 147.93 | 100.00 | -0.08 | -2.69 | 4.25 | -2.11 | 30.90 | 1.70 | 2.63 | 0.10 | 0.71 | 3.34 | -3.02 | 0.85 | 0.00 | -2.09 | 13.77 | 1.21 | 2.23 | 0.00 | |
| Feb | | 172.93 | 163.17 | 216.04 | 190.50 | 377.02 | 232.05 | 142.38 | 153.04 | 164.79 | 179.71 | 172.44 | 189.33 | 65.61 | 100.15 | 190.21 | 205.40 | 151.09 | 100.00 | -0.27 | -0.01 | -1.38 | -0.97 | -2.63 | 1.46 | 0.60 | 0.00 | 0.36 | 1.11 | 0.04 | -0.80 | 0.00 | 0.24 | 0.00 | 1.06 | 2.14 | 0.00 | |
| Mar | | 174.01 | 163.13 | 217.85 | 188.68 | 401.67 | 223.30 | 143.00 | 154.20 | 165.38 | 181.17 | 173.92 | 193.24 | 65.65 | 100.28 | 190.21 | 207.90 | 151.67 | 100.00 | 0.63 | -0.03 | 0.84 | -0.95 | 6.54 | -3.77 | 0.44 | 0.76 | 0.36 | 0.81 | 0.86 | 2.07 | 0.05 | 0.13 | 0.00 | 1.22 | 0.38 | 0.00 | |
| Apr | | 173.78 | 162.96 | 217.21 | 188.19 | 400.07 | 220.16 | 144.00 | 154.78 | 167.00 | 180.98 | 173.93 | 193.42 | 65.65 | 100.22 | 190.21 | 207.92 | 150.44 | 100.00 | -0.13 | -0.10 | -0.30 | -0.26 | -0.40 | -1.41 | 0.70 | 0.38 | 0.98 | -0.11 | 0.01 | 0.09 | 0.00 | -0.06 | 0.00 | 0.01 | -0.81 | 0.00 | |
| May | | 169.37 | 163.58 | 203.06 | 189.20 | 290.37 | 221.72 | 145.33 | 154.38 | 167.48 | 183.94 | 173.93 | 195.81 | 65.65 | 100.34 | 190.21 | 207.92 | 150.55 | 100.00 | -2.54 | 0.38 | -6.52 | 0.54 | -27.42 | 0.71 | 0.92 | -0.26 | 0.29 | 1.64 | 0.00 | 1.24 | 0.00 | 0.12 | 0.00 | 0.00 | 0.07 | 0.00 | |
| June | | 177.48 | 164.11 | 227.37 | 190.87 | 457.34 | 222.81 | 146.64 | 155.35 | 168.10 | 183.04 | 173.81 | 192.91 | 65.65 | 100.81 | 190.21 | 207.92 | 149.38 | 100.00 | 4.79 | 0.32 | 11.97 | 0.88 | 57.50 | 0.49 | 0.90 | 0.62 | 0.37 | -0.48 | -0.07 | -1.48 | 0.00 | 0.46 | 0.00 | 0.00 | -0.78 | 0.00 | |
| July | | 179.44 | 165.17 | 232.32 | 193.36 | 477.86 | 222.28 | 147.25 | 155.70 | 169.05 | 183.12 | 173.90 | 195.17 | 65.65 | 101.12 | 190.21 | 207.92 | 149.93 | 100.00 | 1.10 | 0.65 | 2.18 | 1.30 | 4.49 | -0.24 | 0.42 | 0.23 | 0.57 | 0.04 | 0.05 | 1.17 | 0.00 | 0.31 | 0.00 | 0.00 | 0.37 | 0.00 | |

Annex 6: Atolls - Consumer Price Index and Inflation rates by Major categories

| | | Consumer Price Index - CPI (June 2004 =100) | | | | | | | | | | | | | | | % change in Consumer Price Index - CPI | | | | | | | | | | | | | | | |
|--------------------------|--|--|----------------------|--------------------------------------|-----------------------------------|----------|------------|------------------------|---|--|-----------|--------------|------------------|-------------------------|---------------|------------------------------------|--|----------------------|-----------------------------------|-----------------------------------|--------|------------|---------------------|--|---|--------|-----------|---------------|----------------------|-----------|--------------------------------|--|
| | | Total | Total Excluding Fish | 1. Food and beverages Including Fish | Food and beverages Excluding Fish | 1.1 Fish | 2. Tobacco | 3. Clothing & footwear | 4. Housing, water, electricity, gas & other fuels | 5. Furnishing, household equipments & routine maintenance of | 6. Health | 7. Transport | 8. Communication | 9. Recreation & culture | 10. Education | 12. Miscellaneous goods & services | Total | Total Excluding Fish | Food and beverages Including Fish | Food and beverages Excluding Fish | Fish | of Tobacco | Clothing & footwear | Housing, water, electricity, gas & other fuels | Furnishing, household equipments & routine maintenance of | Health | Transport | Communication | Recreation & culture | Education | Miscellaneous goods & services | |
| Weights | | 51.10 | 48.96 | 19.92 | 17.78 | 2.14 | 1.83 | 3.51 | 7.18 | 2.44 | 2.66 | 2.14 | 1.98 | 2.83 | 1.63 | 4.96 | 51.10 | 48.96 | 19.92 | 17.78 | 2.14 | 1.83 | 3.51 | 7.18 | 2.44 | 2.66 | 2.14 | 1.98 | 2.83 | 1.63 | 4.96 | |
| 2009 | | 133.89 | 134.01 | 148.86 | 150.97 | 131.32 | 117.30 | 117.21 | 146.13 | 143.16 | 128.84 | 144.50 | 74.67 | 91.70 | 115.96 | 115.54 | 3.48 | 4.53 | 2.13 | 4.52 | -16.16 | -2.22 | 5.33 | 6.89 | 8.20 | 3.31 | 0.33 | 0.00 | -4.51 | 8.10 | 5.21 | |
| 2010 | | 143.32 | 143.49 | 155.11 | 157.01 | 139.36 | 114.76 | 118.44 | 154.61 | 148.89 | 169.27 | 150.19 | 74.67 | 93.20 | 119.92 | 121.37 | 7.04 | 7.08 | 4.20 | 4.00 | 6.12 | -2.17 | 1.04 | 5.81 | 4.00 | 31.38 | 3.94 | 0.00 | 1.63 | 3.41 | 5.04 | |
| 2011 | | 163.76 | 159.75 | 185.08 | 176.60 | 255.38 | 147.29 | 129.68 | 157.31 | 160.91 | 184.97 | 170.41 | 74.44 | 97.92 | 122.96 | 132.49 | 14.27 | 11.33 | 19.32 | 12.48 | 83.25 | 28.35 | 9.49 | 1.74 | 8.07 | 9.27 | 13.47 | -0.31 | 5.07 | 2.54 | 9.16 | |
| August 2010 to July 2011 | | 151.09 | 149.17 | 167.36 | 164.03 | 194.99 | 122.89 | 122.32 | 156.30 | 154.18 | 175.79 | 159.57 | 74.63 | 95.34 | 121.70 | 125.64 | 16.40 | 11.69 | 24.66 | 14.04 | 98.77 | 65.05 | 13.53 | 3.21 | 11.84 | -9.02 | 15.35 | -0.58 | 3.19 | 1.04 | 14.02 | |
| August 2011 to July 2012 | | 175.87 | 166.61 | 208.63 | 187.06 | 387.58 | 202.82 | 138.86 | 161.31 | 172.44 | 159.94 | 184.07 | 74.20 | 98.38 | 122.96 | 143.26 | | | | | | | | | | | | | | | | |
| July 2012 / July 2011 | | | | | | | | | | | | | | | | | 6.81 | 1.67 | 16.38 | 5.65 | 63.10 | 52.83 | 5.72 | 4.20 | 11.90 | -28.53 | 10.61 | 0.00 | 1.03 | 0.00 | 12.32 | |
| 2011 July | | 169.92 | 162.52 | 195.28 | 177.95 | 339.06 | 146.28 | 133.61 | 156.36 | 158.02 | 191.37 | 172.04 | 74.20 | 97.62 | 122.96 | 130.37 | 4.61 | 4.03 | 4.25 | 2.74 | 11.37 | 2.64 | 0.18 | 1.04 | -0.49 | 7.79 | 0.00 | -0.63 | -0.13 | 0.00 | -0.32 | |
| Aug | | 170.12 | 165.95 | 194.01 | 185.41 | 265.29 | 150.34 | 134.50 | 156.89 | 161.31 | 191.30 | 173.22 | 74.20 | 98.05 | 122.96 | 132.82 | 0.11 | 2.11 | -0.65 | 4.19 | -21.76 | 2.77 | 0.66 | 0.34 | 2.08 | -0.04 | 0.69 | 0.00 | 0.44 | 0.00 | 1.88 | |
| Sep | | 173.00 | 167.51 | 198.43 | 186.38 | 298.42 | 161.34 | 135.75 | 157.22 | 165.51 | 192.59 | 172.99 | 74.20 | 98.97 | 122.96 | 135.77 | 1.69 | 0.94 | 2.28 | 0.52 | 12.49 | 7.32 | 0.93 | 0.21 | 2.60 | 0.67 | -0.14 | 0.00 | 0.94 | 0.00 | 2.23 | |
| Oct | | 172.14 | 169.75 | 191.18 | 186.89 | 226.74 | 171.66 | 139.06 | 158.16 | 167.25 | 192.64 | 180.36 | 74.20 | 99.93 | 122.96 | 140.58 | -0.50 | 1.34 | -3.65 | 0.28 | -24.02 | 6.40 | 2.44 | 0.60 | 1.05 | 0.02 | 4.26 | 0.00 | 0.97 | 0.00 | 3.54 | |
| Nov | | 179.36 | 171.79 | 207.27 | 189.79 | 352.28 | 167.25 | 137.14 | 162.59 | 170.28 | 193.04 | 180.50 | 74.20 | 100.09 | 122.96 | 142.95 | 4.19 | 1.20 | 8.41 | 1.55 | 55.36 | -2.57 | -1.38 | 2.80 | 1.81 | 0.21 | 0.08 | 0.00 | 0.16 | 0.00 | 1.69 | |
| Dec | | 180.70 | 174.41 | 206.56 | 192.37 | 324.29 | 216.56 | 136.89 | 162.93 | 171.21 | 192.80 | 180.50 | 74.20 | 98.66 | 122.96 | 143.05 | 0.75 | 1.53 | -0.34 | 1.36 | -7.94 | 29.48 | -0.18 | 0.21 | 0.55 | -0.12 | 0.00 | 0.00 | -1.43 | 0.00 | 0.07 | |
| 2012 Jan | | 175.84 | 164.38 | 215.08 | 188.23 | 437.76 | 224.52 | 139.71 | 162.75 | 175.71 | 136.51 | 184.82 | 74.20 | 97.05 | 122.96 | 143.90 | -2.69 | -5.75 | 4.12 | -2.15 | 34.99 | 3.68 | 2.06 | -0.11 | 2.63 | -29.20 | 2.39 | 0.00 | -1.63 | 0.00 | 0.59 | |
| Feb | | 175.39 | 164.40 | 212.98 | 187.23 | 426.54 | 229.40 | 139.99 | 161.49 | 176.41 | 136.52 | 184.93 | 74.20 | 97.62 | 122.96 | 146.73 | -0.25 | 0.02 | -0.98 | -0.53 | -2.56 | 2.17 | 0.20 | -0.77 | 0.40 | 0.01 | 0.06 | 0.00 | 0.59 | 0.00 | 1.97 | |
| Mar | | 176.23 | 163.85 | 214.04 | 184.52 | 458.95 | 222.55 | 139.57 | 162.65 | 176.25 | 136.76 | 190.85 | 74.20 | 97.75 | 122.96 | 147.69 | 0.48 | -0.33 | 0.50 | -1.45 | 7.60 | -2.98 | -0.30 | 0.72 | -0.09 | 0.17 | 3.20 | 0.00 | 0.13 | 0.00 | 0.65 | |
| Apr | | 175.92 | 163.50 | 214.04 | 184.44 | 459.65 | 220.02 | 140.40 | 162.57 | 175.86 | 136.78 | 190.38 | 74.20 | 97.56 | 122.96 | 146.23 | -0.18 | -0.22 | 0.00 | -0.04 | 0.15 | -1.14 | 0.59 | -0.05 | -0.22 | 0.01 | -0.25 | 0.00 | -0.19 | 0.00 | -0.99 | |
| May | | 170.48 | 163.97 | 199.38 | 184.93 | 319.26 | 222.17 | 140.92 | 162.60 | 175.85 | 136.75 | 192.13 | 74.20 | 97.73 | 122.96 | 146.78 | -3.09 | 0.29 | -6.85 | 0.26 | -30.54 | 0.98 | 0.37 | 0.02 | -0.01 | -0.02 | 0.92 | 0.00 | 0.17 | 0.00 | 0.37 | |
| June | | 179.81 | 164.54 | 223.33 | 186.52 | 528.79 | 224.44 | 141.17 | 162.93 | 176.80 | 136.76 | 187.89 | 74.20 | 98.58 | 122.96 | 146.15 | 5.48 | 0.35 | 12.02 | 0.86 | 65.63 | 1.02 | 0.18 | 0.20 | 0.54 | 0.00 | -2.21 | 0.00 | 0.87 | 0.00 | -0.43 | |
| July | | 181.49 | 165.23 | 227.27 | 188.01 | 552.99 | 223.57 | 141.25 | 162.93 | 176.83 | 136.76 | 190.30 | 74.20 | 98.62 | 122.96 | 146.43 | 0.93 | 0.42 | 1.76 | 0.80 | 4.58 | -0.39 | 0.06 | 0.00 | 0.02 | 0.01 | 1.28 | 0.00 | 0.04 | 0.00 | 0.19 | |