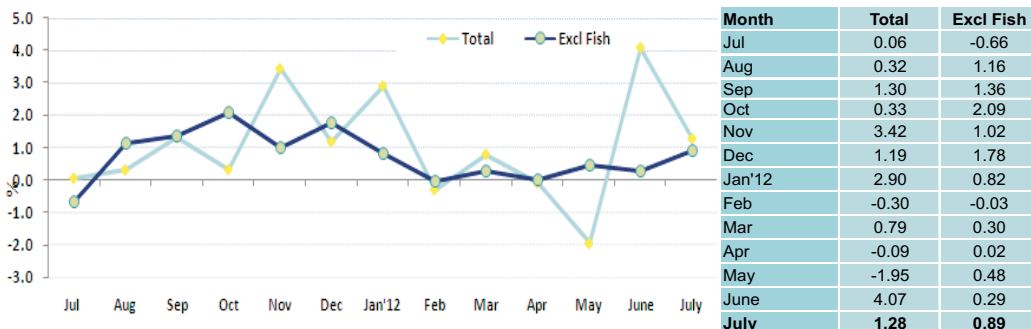


1. Inflation Rate of Male' (Monthly): June 2012 compared to July 2012

To measure month to month inflation, this month's index is compared with the previous month inflation (for e.g: July '12 / June '12). The monthly inflation for July 2012 is 1.28% and 0.89% is the total excluding fish.

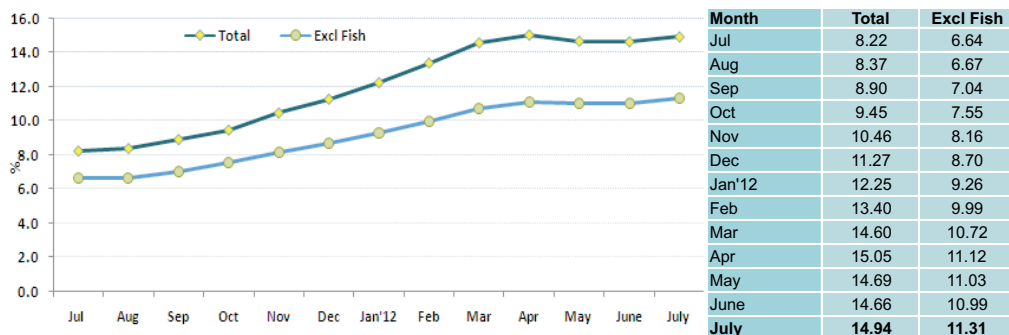
Figure 7. Monthly Inflation Rate of Male', June 2012 - July 2012 (compared to the previous month)



2. Inflation Rate of Male' (Annualized): Aug '11 to July '12/Aug '10 to July '11

The annualized inflation rate for any month compares the average for the 12 monthly indices with that of the preceding 12 months (Eg: Aug '11 to July '12 / Aug '10 to July '11). This index shows an annual inflation of 14.94%, and the annualized total excluding fish is 11.31%.

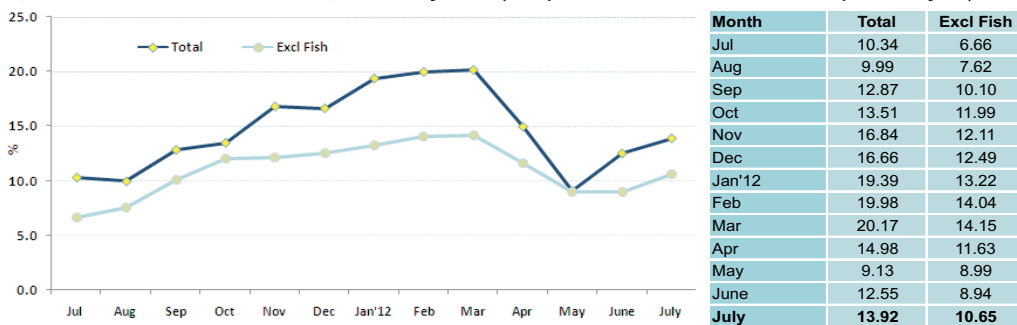
Figure 8. Inflation Rate of Male', Aug 2011 - July 2012 (compared to the past 12 month period)



3. Inflation Rate of Male' (month on month): July '12/July '11

To measure the month on month change at one point in time, the index of the month is compared with that of the same month in the preceding year (Eg: July '12/July '11). The month on month index for July shows an inflation of 13.92% and the inflation excluding fish is 10.65%.

Figure 9. Inflation Rate of Male', July 2011 - July 2012 (compared to the same month of the previous year)



CONSUMER PRICE INDEX - MALE'

Department of National Planning
Ministry of Finance and Treasury

July 2012

Consumer Price Index-Male' July 2012

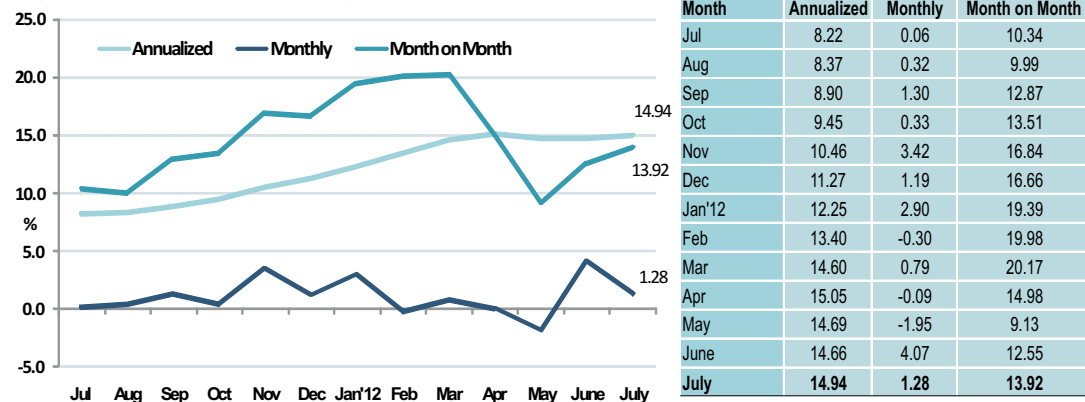
Inflation Rate of Male'

The Consumer Price Index (CPI) for Male' rose at an annualized rate of 14.94 percent in July 2012. Fish and tobacco categories showed the highest inflation followed by hotels, cafes & restaurants and clothing & footwear categories.

Monthly CPI of July 2012 increased by 1.28 percent compared to June 2012. The inflation was mainly driven from food. In addition, fish also contributed to this inflation.

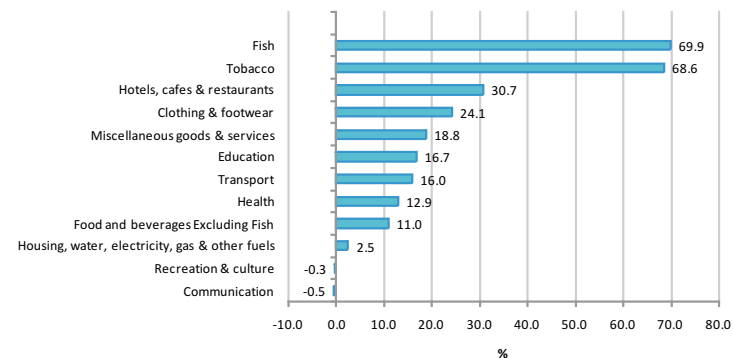
When July 2012 is compared to July 2011, the consumer price index increased by 13.92 percent. Tobacco and fish categories showed the highest inflation followed by hotel, cafes & restaurants category.

Figure 1: Inflation rates of Male', July-2012



Main contributions to the change in CPI - Annualized

Figure 2: Inflation by major categories in July CPI - Annualized



Inflation rate by major categories – Annualized basis

Fish category rose by 70% on an annual basis. This was due to an increase in price of other tuna by 223%. Additionally skipjack tuna and smoked fish prices went up by 97% and 88% respectively. Reef fish, dried fish chips and canned tuna fish also increased during this period.

Tobacco category increased by 69% during the period. Within this category, cigarette prices went up by 72% and arecanut prices by 67%.

Hotels, cafes & restaurants category rose by 31%. Compared to previous period, all the major items in hotels, cafes & restaurant category recorded a price increase. On average breakfast meal prices went up by 44%. Additionally, pizza and restaurant meal prices went up by 26% and 22% respectively.

Change in the CPI - Month on Month

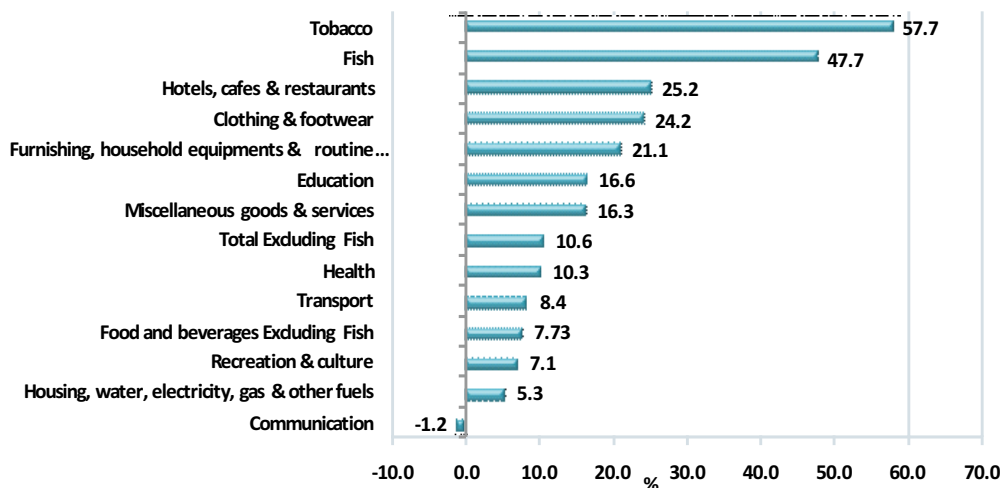
When July 2012 was compared to July 2011 all categories except communication category recorded an inflation. Tobacco category showed the highest inflation with 58% followed by fish at 48%. The third highest category was hotels, cafes & restaurants which registered 25%. Communication category showed a deflation of 1% when compared to July 2011.

For the tobacco category, on average cigarette prices increased by 75% reflecting the increase in the import duties on cigarette at end of 2011.

As for fish, other tuna prices increased significantly by 151% when compared to July 2011. Additionally skipjack tuna and smoked fish prices went up by 65% and 64% respectively. Fish paste, canned fish and dried fish chips prices also increased while reef fish and dried fish chips prices declined by 4% and 24% respectively.

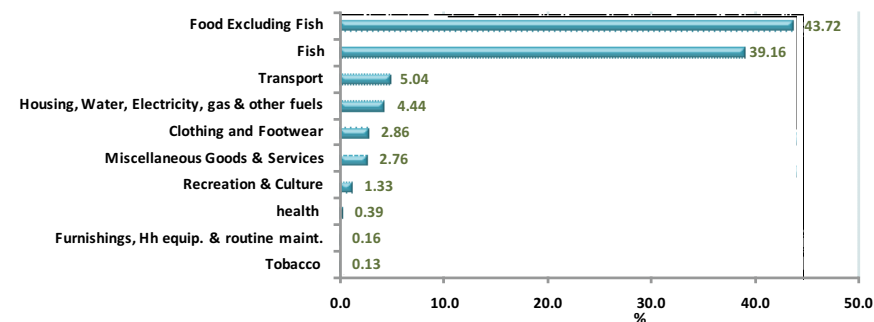
As for hotels, cafes & restaurants category, on an average breakfast meals prices went up by 24%. Additionally pizza prices and restaurant meals prices went up by 15% and 23% respectively.

Figure 4: Inflation Rates by Major sectors - Month on Month basis



Sources of change in the CPI - Monthly basis

Figure 5: Sources of changes in July 2012 CPI - monthly



Food & beverage category pulled up the overall monthly inflation the most by contributing 44% to the inflation. Additionally fish, transport and housing, water, electricity, gas & other fuels categories also pulled up the overall inflation during the month.

Transport category pulled up the monthly inflation by 5% in July 2012. Domestic airfare prices increased by 8% when compared to June 2012. While international airfare prices also increased by 4% in July 2012.

The fourth largest upward contribution to the change in the monthly CPI came from housing, water, electricity, gas & other fuels category by 4%. Rent prices highest to inflation of this category with 5%. Rent prices increased by 1% when compared to the previous month.

Both clothing & footwear and miscellaneous goods & services categories also pulled up the monthly inflation by 3% in July 2012.

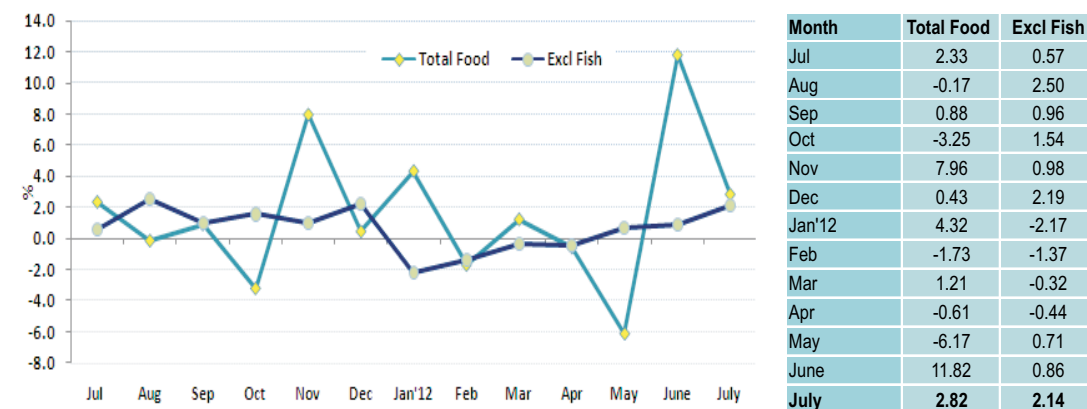
Monthly inflation rate of food and beverages category

The monthly inflation rate for the food & beverages category is 2.82%. Food excluding fish category showed an inflation of 2.14%

As for food category, carrot prices went up by 176% in July 2012 when compared to June 2012. Additionally mixed fresh vegetable prices increased by 23% while garlic prices increased by 12%. During the month banana and egg prices increased by 9% and 7% respectively. In addition to this, items such as chicken drumstick, chicken sausage and cooking oil prices also went up during the month. This is due to the fact that in ramazan there is high demand for the food items which in turn drives prices. However, items such as watermelon, dates, orange and green chilli prices decreased during the month.

The items which contributed most to the fish category were reef fish for which price rose by 20%. Additionally skipjack tuna and smoked fish prices went up by 6% and 2% respectively. Dried fish chips also contributed to this hike. However, other tuna prices decreased by 15% and canned fish prices also declined during the month.

Figure 6: Inflation Rates of Food and Beverages - Monthly basis



Annex 1: Average Prices of Items which showed a significant change, CPI Male', July 2012

Description	Specification	Unit	Annualized			Monthly			Month on Month	
			Average 12 monthly Price			Average Price		% Chn	Av Price	% Chn
			Aug2010- July2011	Aug2011- July2012	% Chn	Jun-12	Jul-12	June 2012 / July 2012	Jul-11	July 2011/ July 2012
Food										
Apollo	Milk Chocó / Wafer cream	1 Piece	1.47	2.16	47.46	2.57	2.57	0.00	1.79	44.14
Apple	Apple	1 Piece	5.05	5.41	7.11	5.43	5.26	-3.09	4.71	11.80
Araconut	Raw Araconut / Uncut / Loose	1 kg	59.65	99.78	67.28	88.19	88.64	0.51	93.29	-4.98
Baby food - cereal	Nestum / Wheat & Honey	250 Gram / Tin	39.31	48.66	23.79	49.50	52.51	6.07	42.88	22.44
Baby food - cereal	Promina / Banana	250 Gram / Packet	17.20	20.22	17.61	21.46	21.36	-0.47	18.71	14.15
Baby food - fruit	Purity / Fruit / Second food	200ml, Bottle	21.87	25.05	14.53	25.57	27.17	6.27	23.83	13.99
Baby milk powder	Lactogen	450 Gram, tin	65.39	73.00	11.63	73.55	74.68	1.53	70.56	5.84
Baby milk powder	Anflace	450 Gram / Tin	136.42	168.69	23.65	167.41	160.34	-4.22	168.31	-4.74
Baby milk powder	S.M.A / Progress	450 Gram / Tin	111.87	122.69	9.67	123.01	121.20	-1.47	122.85	-1.35
Banana	Bonthiraiya	1 Piece	2.16	2.32	7.21	2.52	2.75	9.01	1.82	51.23
Beans	Fresh Beans	1 kg	51.58	56.57	9.68	56.38	58.37	3.54	56.12	4.02
Biscuits	Cream Cracker, Khong Guan	200 gram, packet	9.84	12.76	29.63	12.84	13.20	2.82	11.44	15.35
Biscuits	Marie Biscuit	400 Gram	16.18	21.35	31.95	21.72	21.50	-1.02	18.76	14.62
Bread spread	Chocolate Crumpy	225 Gram	36.35	40.08	10.27	43.85	43.47	-0.88	36.00	20.74
Cabbage	Fresh Cabbage	1 kg	28.64	31.44	9.77	38.99	37.50	-3.81	36.68	2.23
Candy	Solano	1 Piece / 25 Gram	0.43	0.41	-4.37	0.32	0.32	0.00	0.38	-15.47
Canned baked beans	Baked Beans / Canned	400 Gram	11.47	13.88	21.01	14.02	14.58	3.97	13.00	12.13
Canned green peas	Green peas / Processed peas / Canne	440 Gram	8.54	10.90	27.64	11.66	11.87	1.78	9.04	31.19
Canned mixed fruits	Canned Mixed Fruit / Small	398 Gram	27.37	28.59	4.45	24.84	24.95	0.45	30.67	-18.63
Canned pineapple	Canned Pineapple	567 Gram	15.98	22.59	41.36	22.67	23.14	2.05	21.67	6.80
Carrot	Fresh Carrot	1 kg	26.72	31.96	19.61	23.35	64.41	175.82	24.13	166.88
Chicken drumsticks	Chicken drumstick	1 kg	54.30	73.90	36.09	67.23	71.11	5.77	61.44	15.74
Chicken sausage	Chicken Sausage / Packed	340 Gram	18.23	21.47	17.80	20.19	21.18	4.89	20.17	5.00
Chilli powder	Chillie Powder / Packed Locally	50 Gram	5.33	6.73	26.29	6.90	7.16	3.72	6.33	13.01
Cigarette	Marlboro	20 Piece / 1 Pack	20.26	34.14	68.50	38.66	38.66	0.00	22.11	74.83
Cigarette	Benson	20 Piece / 1 Pack	19.56	34.14	74.59	38.66	38.66	0.00	22.11	74.83
Coconut	Medium size / Coconut	1 Piece	6.84	4.89	-28.47	4.15	4.32	4.01	6.37	-32.23
Coffee	Nescafe, Cafe' soluble coffee / Canned	50 Gram	32.65	40.99	25.53	41.62	40.22	-3.37	37.90	6.11
Coke	Dubai coke / Canned	300 MI	7.64	10.74	40.64	10.77	11.09	3.04	9.71	14.21
Coke	Coca Cola / Large Bottle	1500 MI	25.14	29.61	17.80	30.27	29.52	-2.49	27.91	5.76
Condensed milk	Double Peach	397Gram, tin	11.92	15.34	28.64	15.57	16.12	3.50	14.19	13.60
Condensed milk	Cow Bell	397 Gram / Tin	11.24	15.22	35.35	15.20	15.49	1.90	12.84	20.63
Cooking oil	Bemoli Oil	2 Ltr	53.55	63.42	18.44	59.62	62.51	4.85	68.66	-8.96
Cooking oil	Sun Flower Oil	2 Ltr	77.02	100.72	30.76	91.45	88.76	-2.94	95.52	-7.08
Corn flake	Kellogg's / Wheat and Honey	300 Gram	42.60	43.81	2.86	46.90	47.31	0.86	42.29	11.86
Cucumber	Fresh Cucumber	1 kg	27.82	31.79	14.28	34.02	34.96	2.78	22.22	57.32
Curry powder	Curry Powder / Antelope brand / Canne	340 Gram	31.55	41.43	31.32	41.98	42.03	0.13	35.01	20.05
Curry powder	Fish curry powder / Packed locally	50 Gram	5.32	6.78	27.55	6.97	7.25	4.10	6.09	19.10
Curry powder	Chicken curry powder / Packed locally	50 Gram	5.34	6.85	28.32	7.01	7.12	1.62	6.45	10.32
Dairy milk	Dutch Lady / Milk Pack / Small	250 MI	7.54	9.68	28.39	9.79	9.76	-0.22	9.29	5.06
Dates	Dates without nuts	200 Gram /pack	29.87	31.99	7.08	36.77	31.30	-14.88	26.67	17.38
Dhal	Yellow Colored Dhal	1 kg	44.93	47.55	5.82	46.37	46.33	-0.08	46.57	-0.51
Dried Chilli	Dried Chilli (Hikimirus) / Loose	1 kg	55.44	88.56	59.73	97.92	97.92	0.00	67.50	45.07
Egg	Chicken egg / Imported	1 Piece	1.58	1.73	9.46	1.75	1.87	6.96	2.00	-6.64
Frozen beef	Frozen Beef	1 kg	50.59	68.63	35.65	68.07	70.32	3.31	56.82	23.76
Frozen chicken	Frozen chicken / Whole chicken / Pre p	1 kg	41.15	54.17	31.64	46.85	45.24	-3.44	51.87	-12.79
Garlic	Garlic	100 Gram	7.42	3.87	-47.88	3.41	3.81	11.51	5.13	-25.77
Ginger	Ginger	100 Gram	5.46	3.99	-27.04	3.62	3.70	2.09	4.14	-10.69
Githayo Mirus	Dhivehi mirus	1 Piece	2.93	2.85	-2.79	3.18	3.31	4.12	2.62	26.32
Green chilli	Green Chilli / Imported	100 Gram	9.10	8.05	-11.55	10.45	9.60	-8.15	6.09	57.61
Ice cream	Chocolate Ice cream / Tub	1 Ltr	47.55	60.07	26.34	64.10	64.17	0.11	50.14	27.97
Jam	Tova Brand / Bottle	450 Gram	22.52	24.73	9.79	24.96	24.82	-0.54	22.29	11.38
Juice-Foster Clark	Foster Clark / Powdered Juice / Bottled	750 Gram	56.29	65.41	16.22	65.48	65.49	0.01	62.89	4.14
Juice-Sun quick	Sun quick / Orange Juice / Bottled	840 MI	58.16	73.19	25.84	78.40	80.65	2.87	63.46	27.09
Lemon	Imported lemon	1 Piece	1.87	2.17	16.32	2.27	2.34	3.22	1.85	26.96
Mango	Fresh / local / Mango	1 Piece	9.67	7.64	-20.98	9.00	9.00	0.00	6.67	35.00
Margarine	Daisy brand tub / Small	250 Gram	21.70	26.27	21.05	26.84	26.45	-1.46	24.04	10.03
Milk powder	Coast	1800 Gram, tin	211.25	251.79	19.19	236.97	240.85	1.64	250.10	-3.70
Milk powder	Anchor Milk	1800 Gram / Tin	218.58	277.28	26.86	280.48	276.91	-1.27	252.05	9.86
Milk powder	Nido	1800 Gram / Tin	206.56	270.02	30.72	268.22	264.28	-1.47	225.58	17.16
Milo	Nestle Milo Powder / Canned	400 Gram	58.51	83.22	42.23	84.89	85.39	0.59	70.77	20.66
Mineral water	Life / Small Bottle	500 MI	4.01	3.04	-24.07	2.96	2.99	1.24	3.50	-14.48
Mixed fresh vegetables	Mixed Vegetables	1 kg	42.71	42.49	-0.52	43.27	53.25	23.06	40.06	32.92
Onion	Imported Onion	1 kg	19.53	14.02	-28.21	12.42	12.35	-0.53	16.81	-26.51
Orange	Fresh Orange	1 Piece	4.09	3.91	-4.34	4.39	4.01	-8.59	3.19	25.63
Rice-Basmati	Basmati Rice / Pre Packed	1 kg	26.16	27.07	3.47	28.95	29.00	0.17	24.11	20.25
Saltish short-eats	Handulu gulha	1 Piece	1.53	1.30	-14.82	1.17	1.17	0.00	2.00	-41.67
Sauce	Tomato Sauce / life Brand	320 Gram / Bottled	10.40	14.02	34.82	15.65	14.91	-4.76	11.23	32.73
Sauce	Chillie Sauce / life Brand	335 Gram / Bottled	11.69	15.63	33.72	16.63	16.56	-0.45	13.12	26.21
Sauce	Chillie & Garlic Sauce / life Brand	320 Gram / Bottled	12.75	16.43	28.87	17.47	17.24	-1.29	13.96	23.50
Sweet short-eats	Foni folhi	1 Piece	2.00	2.30	15.18	2.37	2.37	0.00	2.00	18.67
Tea leaves-loose	Ceylon Tea Leaves (loose)	1 kg	42.85	47.53	10.91	46.67	46.67	0.00	49.22	-5.19
Tea leaves-tea bag	Today's Taste / 100 tea bag	200 Gram	26.43	33.87	28.12	34.27	34.48	0.60	31.95	7.90
Tea leaves-tea bag	Melesna / 100 tea bag	200 Gram	28.19	40.96	45.29	43.16	43.16	0.00	36.97	16.77
Tea leaves-tea bag	Akbar / 100 tea bag	200 Gram	26.77	35.07	31.01	35.25	35.25	0.00	34.33	2.66
Tomato	Fresh Tomato	1Kg	30.88	34.83	12.77	40.75	40.00	-1.84	33.02	21.12

Description	Specification	Unit	Annualized			Monthly			Month on Month	
			Average 12 monthly Price			Average Price		% Chn	Av Price	% Chn
			Aug2010- July2011	Aug2011- July2012	% Chn	Jun-12	Jul-12	June 2012 / July 2012	Jul-11	July 2011/ July 2012
Watermelon	Water melon (fresh Locally produced)	1 kg	16.21	22.30	37.55	24.86	20.73	-16.61	14.51	42.87
Fish										
Canned fish in brine	Felivaru Canned Fish / Chunk in Brine	185 Gram	14.78	17.20	16.44	17.63	17.59	-0.22	16.63	5.79
Canned fish in oil	Felivaru canned fish / Chunk in Oil	185 Gram	16.27	18.32	12.62	18.68	18.64	-0.19	18.13	2.83
Dried fish chips	Pre packed Dried fish chips	100 Gram	10.96	13.50	23.18	11.93	12.12	1.59	16.00	-24.24
Fish paste	Fasmeeru Rihaakuru / Bottled	450 Gram	32.13	34.78	8.26	35.57	35.57	0.00	33.20	7.14
Other tuna	Other Tuna / Latti	1 kg	25.20	81.27	222.54	114.55	97.79	-14.63	38.91	151.32
Reef fish	Reef Fish / Maaniya mas	1 kg	22.81	32.94	44.40	29.19	35.17	20.49	36.51	-3.67
Skipjack tuna	Godha / Kalhubilamas	1 kg	39.17	77.04	96.69	108.00	114.73	6.23	69.78	64.42
Smoked fish	Smoked Fish (Valhoamas) / Loose	1 kg	71.67	134.79	88.07	148.01	151.43	2.31	91.98	64.63
Clothing and Footwear										
Dress material	Most often sold material / Plane / Faatu	1 Muh	25.50	34.86	36.72	39.04	39.04	0.00	27.47	42.09
Dress material	Most often sold material / Design / Faat	1 Muh	40.00	37.47	-6.31	38.00	38.00	0.00	40.00	-5.00
Men's jeans	Mend's Jeans / Most Sold Material	1 Piece	226.05	286.60	26.79	309.93	313.00	0.99	236.51	32.34
Men's sandals	Most recently sold brand	1 Pair	152.92	192.46	25.86	200.33	203.67	1.66	176.67	15.28
Men's shirt	Men T-Shirt / Most Sold material	1 Piece	173.96	215.56	23.92	238.50	238.50	0.00	182.50	30.68
Men's shoes	Office Shoes	1 Pair	257.08	349.43	35.92	387.57	393.00	1.40	275.00	42.91
Men's trousers	Men's Trousers / Long	1 Piece	190.46	230.89	21.23	245.33	252.14	2.77	198.85	26.80
Men's t-shirt	Men Shirt / Most Sold Brand	1 Piece	160.29	181.69	13.35	198.80	198.80	0.00	156.82	26.77
Nylon faivaan	Size 10	1 Pair	12.70	13.98	10.06	14.10	14.10	0.00	13.45	4.87
School shoes	School Shoes/ Girl / Most recently sold	1 Pair	141.53	184.34	30.25	188.67	193.33	2.47	155.00	24.73
School uniform	School Uniform / Boys / Medium size 1-1	1 Piece	70.21	120.39	71.48	121.90	121.90	0.00	102.50	18.93
Sport shoes	Diadora / Indoor tennis shoes / Men	1 Pair	272.50	343.03	25.88	365.70	365.70	0.00	272.50	34.20
Tailoring national dress	National dress / Unstrech Material	1 Piece	140.00	149.17	6.55	150.00	150.00	0.00	140.00	7.14
Tailoring women's blouse	Sewing of blouse	1 Piece	71.04	75.00	5.57	75.00	75.00	0.00	75.00	0.00
Women's jeans	Women's Jeans / Fade	1 Piece	203.06	220.00	8.34	227.67	236.67	3.95	201.67	17.36
Women's sandals	Casual (home-wear)	1 Piece	137.08	189.97	38.58	205.57	200.33	-2.55	130.00	54.10
Women's t-shirt	Ladies T - shirt / Most sold Brand	1 Piece	156.87	192.04	22.42	199.13	199.13	0.00	179.10	11.18
Housing										
Cement	Cement bag	50 kg	83.67	108.81	30.05	122.00	122.00	0.00	97.00	25.77
Cooking gas	Cooking gas / Excluding Transport cost	13 Kg	317.00	387.50	22.24	390.00	390.00	0.00	360.00	8.33
Electricity charges	575 Unit	Total including fuel ch	2,379.70	2,396.93	0.72	2,474.00	2,474.00	0.00	2,379.70	3.96
House rent index	Average house rent index	Index	157.40	164.00	4.20	168.10	169.05	0.57	159.46	6.01
Kerosene oil	Kerosene oil	1 Ltr	12.33	16.47	33.51	16.56	16.56	0.00	16.00	3.50
Paint	Wall Paint	5 litre	171.58	189.60	10.50	198.53	198.53	0.00	175.00	13.44
Plywood	3 mm	1 Piece	116.21	144.20	24.08	167.59	166.56	-0.61	126.67	31.49
Roofing sheet	0.6 mm / 1 feet	1 Piece	26.02	28.47	9.43	30.24	30.24	0.00	23.50	28.68
Furnishing										
Battery	"D" Size Battery / 555 Brand	1 Piece	3.00	3.61	20.13	3.72	3.72	0.00	3.05	21.86
Bed sheet	Single Bed sheet / Ordinary brand	1 Piece	41.32	52.75	27.66	62.97	62.97	0.00	39.24	60.47
Bedroom set	1 Queen size bed / dressing table / cup 1	1 Set	6,660.42	9,118.08	36.90	7,894.00	7,894.00	0.00	10,900.00	-27.58
Chair	Plastic Chair / large / without handle	1 Piece	130.00	150.41	15.70	175.00	175.00	0.00	130.00	34.62
Domestic servants	Salary of Domestic Servants	Per person / Per month	1,285.00	1,520.58	18.33	1,542.00	1,542.00	0.00	1,285.00	20.00
Fan	Electric fan (Ceiling) / Usha Brand / 43	1 Piece	453.13	494.60	9.15	441.74	441.74	0.00	470.00	-6.01
Insecticides	Insecticides / Mosfly Brand / Small Bott	400 ml	33.52	42.18	25.86	43.46	43.81	0.81	39.39	11.22
Iron	Electric Iron / Phillip brand / 1000 V	1 Piece	234.72	257.29	9.62	258.75	258.75	0.00	250.00	3.50
Light tube	Fluorescent tube / 2 feet / White Color	1 Piece	11.71	15.22	29.96	17.75	18.42	3.79	13.45	36.99
Linoleum	Aadhage Tharafaalu (linoleum)	1 Feet	9.03	15.91	76.18	16.43	17.10	4.08	11.00	55.45
Mattress	Single / kurlon or Temptation	1 Piece	2,502.50	3,378.10	34.99	3,420.00	3,420.00	0.00	3,250.00	5.23
Refrigerator	Forest free Refrigerator / 50 kg/ Hitach	1 Piece	4,340.58	6,309.71	45.37	7,546.31	7,546.31	0.00	3,989.00	89.18
Repairs to HH Appliance	Washing machine Repair / Changing of Per seal	1 Piece	250.00	257.29	2.92	258.75	258.75	0.00	250.00	3.50
Sewing machine	Sewing Machine / With 21 Design / Bro	1 Piece	5,291.67	5,664.58	7.05	5,692.50	5,692.50	0.00	5,500.00	3.50
Single bed	Single bed / With fancy Plywood	1 Piece	1,576.04	2,133.65	35.38	2,385.00	2,385.00	0.00	1,250.00	90.80
Sofa Set	Sofa set / Plywood with sponge cushior	1 Piece	5,662.50	7,952.60	40.44	7,261.00	7,261.00	0.00	7,950.00	-8.67
Stove	2 Sided gas stove / Hitachi brand	1 Piece	497.92	471.05	-5.40	507.93	507.93	0.00	450.00	12.87
Washing power	Soklin Brand Washing powder Pack	1 Kg	21.97	22.58	2.78	23.76	23.10	-2.77	21.57	7.07
Washing power	B 29 Brand Washing powder Pack	1 Kg	19.08	22.77	19.34	24.33	23.36	-3.99	20.13	16.03
Water pump	Pedroller Water Pump / 1 inches	1 Piece	2,823.78	3,559.91	26.07	3,933.00	3,933.00	0.00	2,950.00	33.32
Health										
Chest x-ray	Chest x-ray	Per test	112.56	153.47	36.35	175.00	175.00	0.00	123.33	41.89
Dental service (ordinary fil	Dental Service / Ordinary Filling	Per Patient	215.28	241.67	12.26	300.00	300.00	0.00	200.00	50.00
Diegen	Diegen / 200 ml	1 Bottle	26.75	37.63	40.69	38.33	38.33	0.00	29.50	29.94
Doctor's consulting fee-ge	consultation fee / General Doctor	Per Patient	81.25	92.19	13.46	100.00	100.00	0.00	81.25	23.08
Doctor's consulting fee-spr	Doctor consultation fee / Specialist	Per Patient	129.58	176.81	36.44	191.67	191.67	0.00	140.00	36.90
Forcevel	Forcevel / 500 mg	1 Tablet	3.51	4.00	13.87	4.00	4.00	0.00	3.50	14.29
HB Test	HB test / Blood Test	Per test	40.75	38.19	-6.27	38.33	38.33	0.00	38.00	0.88
Helibo orange	Helibo Orange / 200 ml	1 Bottle	43.25	57.86	33.79	58.33	58.33	0.00	48.00	21.53
Ultra sonogram test	Ultra Sound Scan / Hole Abdomen	Per test	490.00	527.78	7.71	533.33	533.33	0.00	520.00	2.56
Vicks balm	Vicks Balm / 19 Gram	1 Bottle	10.81	13.94	29.05	14.83	15.00	1.12	11.00	36.36
Vitamin C	Vitamin C / 500 mg	1 Tablet	0.82	0.99	20.95	1.00	1.00	0.00	1.00	0.00
Transport										
Bicycle	Mountain	1 Piece	1,116.67	1,278.56	14.50	1,298.50	1,298.50	0.00	1,225.00	6.00
Cleaning of motorcycle	Full cycle	Per vehicle	70.63	80.67	14.22	82.50	82.50	0.00	77.50	6.45
Domestic airfare	Male/Gan/Male'	Per Person / Adult	2,979.67	3,341.55	12.15	3,392.00	3,392.00	0.00	3,206.00	5.80
Domestic airfare	Male/Hanimadhoo/Male'	Per Person / Adult	2,279.67	2,626.77	15.23	2,650.00	2,850.00	7.55	2,506.00	13.73
Domestic airfare	Male/Kade'dhoo/ Male'	Per Person / Adult	2,629.67	2,996.50	13.95	3,264.00	3,021.00	-7.44	2,856.00	5.78
Domestic airfare	Male/Kah'dhoo/male'	Per Person / Adult	2,279.67	2,610.10	14.49	2,650.00	2,650.00	0.00	2,506.00	5.75
International airfare	Male/colombo/male'	Per Person	4,275.03	5,309.54	24.20	5,211.31	5,436.50	4.32	5,000.50	8.72
Motor cycle tyre	Back Tyre	1 Piece	374.44	705.41	88.39	710.00	710.00	0.00	670.00	5.97
Motor cycle tyre	Front tyre	1 Piece	356.00	623.63	75.18	651.00	651.00	0.00	587.00	10.90
Motorcycle	Honda Wave 125 I	1 Piece	46,225.00	55,298.50	19.63	57,028.00	57,028.00	0.00	49,900.00	14.28
Motorcycle	Honda Wave 125 H	1 Piece	41,058.33	48,666.67	18.53	50,456.00	50,456.00	0.00	45,200.00	11.63
Petrol	Petrol	1 Ltr	12.89	16.02	24.29	16.24	16.24	0.00	16.19	0.29
Postage of letter - Asia	Postage of letter to Asian Countries	1 Piece	16.00	16.83	5.21	18.00	18.00	0.00	16.00	12.50
Hotels, cafés and Restaurants										
Meals	4 roshi / 1fish curry / 1 black tea / 1 dhu	Per person	17.25	23.66	37.14	23.32	23.32	0.00	18.00	29.56
Meals	4 roshi / 1 chicken curry / 1 black tea /1 Per person	Per person	25.42	38.19	50.27	39.00	39.00	0.00	33.00	18.18
Pizza	Tuna Mushroom whole pizza	whole pizza	68.47	86.18	25.86	90.03	90.03	0.00	78.33	14.94
Restaurant meals	Fish & Chips	1 plate	48.00	58.57	22.02	62.87	62.87	0.00	50.00	25.73

Description	Specification	Unit	Annualized			Monthly			Month on Month	
			Average 12 monthly Price			Average Price		% Chn	Av Price	% Chn
			Aug2010- July2011	Aug2011- July2012	% Chn	Jun-12	Jul-12	June 2012 / July 2012	Jul-11	July 2011/ July 2012
Restaurant meals	Nasi Goreng	1 plate	51.89	63.78	22.92	66.67	66.67	0.00	55.00	21.21
Miscellaneous										
Baby cologne	Baby Cherymy Cologne	175 ml	23.25	33.96	46.02	33.42	34.61	3.56	29.14	18.76
Baby diapers	Huggies / Small Size	1 Packet	129.75	146.31	12.76	149.73	147.60	-1.42	137.41	7.42
Baby lotion	Johnson & Johnson Baby Lotion	200 MI, bottle	30.51	35.04	14.86	36.12	36.21	0.24	33.10	9.39
Baby soap	Johnson Baby Soap	100 Gram	8.64	10.60	22.71	11.87	11.75	-1.03	8.84	32.84
Body lotion	Enchanteaur Lotion	200 MI	31.15	34.88	11.98	35.84	35.92	0.21	30.67	17.12
Cologne	Splash	200 MI	19.80	24.32	22.81	24.58	24.06	-2.12	22.09	8.93
Cologne	Loviline	175 ml	21.66	27.61	27.46	26.11	26.16	0.22	25.93	0.89
Cosmetic treatment	Cosmetic Treatment / Eye brought	Per time	30.00	41.75	39.17	50.00	50.00	0.00	30.00	66.67
Facial cream	Fair & Lovely / Facial Cream	25 Gram	16.29	20.95	28.57	21.62	23.28	7.69	16.96	37.28
Hair cream	Max	175 ml	27.49	33.84	23.10	35.02	34.46	-1.62	31.64	8.92
Hair cream	Elite	175 ml	27.04	35.56	31.52	36.11	36.36	0.69	33.03	10.10
Hair cream	Gatsby	175 ml	20.57	21.90	6.48	22.07	22.36	1.34	18.46	21.10
Haircut-female	Female Hair Cut	Per Person	129.17	153.72	19.01	161.33	161.33	0.00	141.67	13.88
Haircut-men	Male Hair Cut	Per Person	34.38	55.96	62.78	60.00	60.00	0.00	43.75	37.14
Sanitary pads	Stay Free	1 Packet	13.19	15.37	16.57	16.66	16.54	-0.75	13.77	20.09
Sanitary pads	Riaa	1 Packet	17.03	13.65	-19.84	14.28	13.95	-2.35	13.99	-0.31
Shampoo	Emerone	200 MI	18.11	25.03	38.24	25.33	25.48	0.59	23.00	10.80
Shampoo	Head & shoulders	200 MI	32.14	40.11	24.79	38.13	38.37	0.64	34.45	11.36
Shampoo	Pantene Pro vitamin	200 MI	29.42	35.82	21.77	36.32	38.49	5.97	30.19	27.47
Soap	Lux Soap	100 Gram	4.64	6.07	30.91	6.90	6.96	0.82	4.81	44.83
Toothpaste	Colgate	50 MI	11.66	13.10	12.36	14.11	13.96	-1.05	9.99	39.80

Annex 2: Male’ - Consumer Price Index and Inflation rates by Major categories

	Consumer Price Index - CPI (June 2004 =100)																		% change in CPI / Inflation Rate																		
	Total	Total Excluding Fish	1. Food and beverages Including Fish	Food and beverages Excluding Fish	1.1 Fish	2. Tobacco	3. Clothing & footwear	4. Housing, water, electricity, gas & other fuels	Actual rentals for housing	5. Furnishing, household equipments & routine maintenance of	6. Health	7. Transport	8. Communication	9. Recreation & culture	10. Education	11. Hotels, cafes & restaurants	12. Miscellaneous goods & services	13. Religious activity	Total	Total Excluding Fish	Food and beverages Including Fish	Food and beverages Excluding Fish	Fish	Tobacco	Clothing & footwear	Housing, water, electricity, gas & other fuels	Actual rentals for housing	Furnishing, household equipments & routine maintenance of	Health	Transport	Communication	Recreation & culture	Education	Hotels, cafes & restaurants	Miscellaneous goods & services	Religious activity	
Weights	48.90	46.48	13.39	10.97	2.42	0.93	2.45	12.30	7.17	2.85	2.76	2.92	3.84	2.10	1.51	0.77	2.96	0.11	48.90	46.48	13.39	10.97	2.42	0.93	2.45	12.30	7.17	2.85	2.76	2.92	3.84	2.10	1.51	0.77	2.96	0.11	
2009	130.21	130.13	151.57	155.95	131.68	111.35	109.30	131.18	143.81	129.43	151.16	153.56	61.32	88.34	150.19	141.33	118.07	100.00	4.53	5.48	0.52	2.93	-10.70	-1.80	3.21	7.82	14.29	10.94	2.25	0.98	-0.75	5.01	35.09	2.57	7.10	0.00	
2010	138.21	138.02	162.90	167.54	141.88	110.98	112.54	141.13	153.04	137.17	158.21	158.66	61.46	93.41	164.38	145.89	123.88	100.00	6.15	6.07	7.48	7.43	7.74	-0.33	2.96	7.59	6.42	5.98	4.66	3.32	0.23	5.74	9.44	3.23	4.93	0.00	
2011	153.79	150.03	195.36	188.60	226.03	141.21	127.04	145.24	159.87	142.94	174.92	180.47	61.61	91.43	194.52	168.68	133.07	100.00	11.27	8.70	19.93	12.57	59.31	27.24	12.89	2.91	4.46	4.20	10.56	13.74	0.24	-2.13	18.34	15.62	7.42	0.00	
Aug 2010 to July 2011	145.59	143.68	179.40	178.74	182.37	118.85	116.71	144.13	157.36	138.07	165.41	167.44	61.61	92.66	182.80	151.88	125.88	100.00	14.94	11.31	21.82	11.00	69.90	68.61	24.12	2.47	4.54	16.07	12.88	15.95	-0.47	-0.31	16.72	30.72	18.81	0.00	
Aug 2011 to July 2012	167.34	159.92	218.54	198.41	309.84	200.39	144.86	147.69	164.50	160.26	186.71	194.15	61.32	92.37	213.37	198.54	149.55	100.00																			
July 2012 / July 2011																			13.92	10.65	17.54	7.73	47.66	57.72	24.18	5.35	6.01	21.09	10.30	8.42	-1.22	7.11	16.62	25.18	16.32	0.00	
2011 July	155.63	149.23	204.88	188.64	278.54	139.34	125.94	143.41	159.46	140.95	172.95	183.61	61.99	87.83	194.52	166.11	132.76	100.00	0.06	-0.66	2.33	0.57	8.16	0.47	1.06	-2.42	0.08	0.53	-3.15	0.00	-0.13	-3.33	0.00	0.00	0.52	0.00	
Aug	156.12	150.96	204.53	193.35	255.24	137.71	127.66	144.60	160.08	141.40	172.95	184.90	61.90	87.83	194.52	166.11	135.00	100.00	0.32	1.16	-0.17	2.50	-8.37	-1.18	1.36	0.83	0.39	0.31	0.00	0.71	-0.14	0.01	0.00	0.00	0.00	1.69	0.00
Sep	158.15	153.01	206.34	195.20	256.84	143.21	131.88	144.90	160.48	142.60	183.63	185.75	61.90	89.25	194.52	179.50	137.52	100.00	1.30	1.36	0.88	0.96	0.63	4.00	3.31	0.21	0.25	0.85	6.17	0.46	0.00	1.61	0.00	8.07	1.86	0.00	
Oct	158.67	156.20	199.64	198.21	206.14	150.56	142.24	145.15	161.65	152.89	183.89	193.64	61.18	92.44	194.52	186.97	143.33	100.00	0.33	2.09	-3.25	1.54	-19.74	5.13	7.85	0.18	0.73	7.22	0.14	4.25	-1.17	3.58	0.00	4.16	4.23	0.00	
Nov	164.11	157.80	215.54	200.14	285.37	152.48	142.06	146.62	162.76	156.06	184.90	194.86	61.18	92.55	194.52	200.81	145.75	100.00	3.42	1.02	7.96	0.98	38.44	1.28	-0.13	1.01	0.69	2.07	0.55	0.63	0.00	0.11	0.00	7.40	1.69	0.00	
Dec	166.04	160.60	216.41	204.47	270.58	241.17	140.25	146.80	163.04	154.80	184.90	196.50	61.18	92.58	194.52	200.81	146.04	100.00	1.18	1.77	0.40	2.16	-5.18	58.16	-1.27	0.12	0.17	-0.80	0.00	0.84	0.00	0.03	0.00	0.00	0.00	0.20	0.00
2012 Jan	170.86	161.93	225.81	200.10	342.43	236.92	145.11	147.05	164.20	161.18	188.14	195.83	61.18	93.24	226.83	203.24	153.35	100.00	2.90	0.83	4.34	-2.14	26.55	-1.76	3.46	0.17	0.71	4.12	1.75	-0.34	0.00	0.72	16.62	1.21	5.00	0.00	
Feb	170.35	161.88	221.89	197.37	333.14	237.24	146.76	147.73	164.79	164.91	188.28	192.88	61.18	93.09	226.83	205.40	157.09	100.00	-0.30	-0.03	-1.73	-1.37	-2.71	0.13	1.14	0.47	0.36	2.31	0.07	-1.51	0.00	-0.16	0.00	1.06	2.44	0.00	
Mar	171.69	162.36	224.58	196.73	350.93	224.77	148.41	148.85	165.38	167.58	190.82	195.05	61.23	93.30	226.83	207.90	157.04	100.00	0.79	0.30	1.21	-0.32	5.34	-5.26	1.12	0.76	0.36	1.62	1.35	1.13	0.09	0.23	0.00	1.22	-0.03	0.00	
Apr	171.54	162.39	223.22	195.87	347.30	220.43	149.96	149.82	167.00	167.49	190.82	195.71	61.23	93.32	226.83	207.92	156.13	100.00	-0.09	0.02	-0.61	-0.44	-1.03	-1.93	1.05	0.65	0.98	-0.05	0.00	0.34	0.00	0.03	0.00	0.01	-0.58	0.00	
May	168.20	163.18	209.46	197.26	264.77	220.84	152.44	149.17	167.48	172.94	190.85	198.68	61.23	93.39	226.83	207.92	155.52	100.00	-1.95	0.48	-6.17	0.71	-23.76	0.18	1.66	-0.43	0.29	3.25	0.02	1.52	0.00	0.07	0.00	0.00	0.00	-0.39	0.00
June	175.05	163.65	234.21	198.97	394.04	219.61	155.15	150.53	168.10	170.62	190.59	196.92	61.23	93.39	226.83	207.92	153.44	100.00	4.07	0.29	11.82	0.86	48.82	-0.55	1.78	0.91	0.37	-1.34	-0.14	-0.89	0.00	0.01	0.00	0.00	0.00	-1.34	0.00
July	177.29	165.11	240.81	203.22	411.30	219.77	156.40	151.08	169.05	170.68	190.76	199.07	61.23	94.07	226.83	207.92	154.43	100.00	1.28	0.89	2.82	2.14	4.38	0.07	0.80	0.37	0.57	0.04	0.09	1.09	0.00	0.72	0.00	0.00	0.65	0.00	