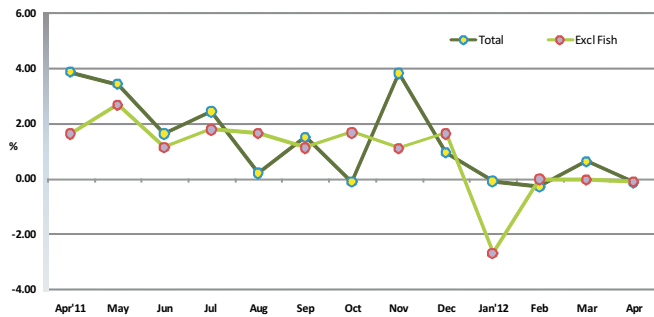


1. Inflation Rate of Nation (Monthly): April 2012 compared to March 2012

To measure month to month inflation, this month's index is compared with the previous month inflation (for e.g: April '12 /March '12). The monthly inflation for April 2012 is -0.13% and -0.10% is the total excluding fish.

Figure 8. Monthly Inflation Rate of Nation (compared to the previous month)

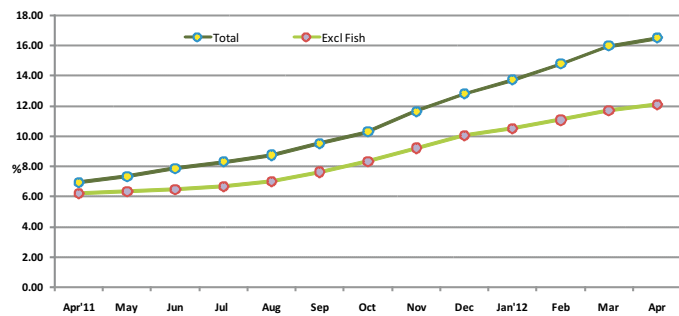


Month	Total	Excl Fish
Apr'11	3.88	1.64
May	3.44	2.68
Jun	1.64	1.16
Jul	2.43	1.79
Aug	0.21	1.67
Sep	1.51	1.13
Oct	-0.11	1.68
Nov	3.83	1.12
Dec	0.95	1.65
Jan'12	-0.08	-2.69
Feb	-0.27	-0.01
Mar	0.63	-0.03
Apr	-0.13	-0.10

2. Inflation Rate of Nation (Annualized): May '11 to April '12 / May '10 to April '11

The annualized inflation rate for any month compares the average for the 12 monthly indices with that of the preceding 12 months (Eg: May '11 to April '12 / May '10 to April '11). This index shows an annual inflation of 16.53%, and the annualized total excluding fish is 12.10%.

Figure 9. Annualized Inflation Rate of Nation (compared to the past 12 month period)

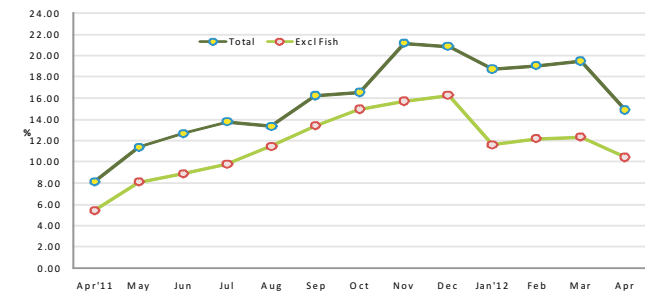


Month	Total	Excl Fish
Apr'11	6.98	6.21
May	7.37	6.31
Jun	7.89	6.46
Jul	8.33	6.66
Aug	8.79	7.02
Sep	9.56	7.63
Oct	10.32	8.34
Nov	11.67	9.22
Dec	12.83	10.08
Jan'12	13.75	10.51
Feb	14.83	11.09
Mar	15.99	11.70
Apr	16.53	12.10

3. Inflation Rate of Nation (month on month): April '12 / April '11

To measure the month on month change at one point in time, the index of the month is compared with that of the same month in the preceding year (Eg: April '12 / April '11). The month on month index for April shows an inflation of 14.87% and the inflation excluding fish is 10.42%.

Figure 10. Month on Month inflation Rate of Nation (compared to the same month of the previous year)



Month	Total	Excl Fish
Apr'11	8.16	5.44
May	11.40	8.12
Jun	12.68	8.91
Jul	13.79	9.79
Aug	13.36	11.46
Sep	16.24	13.40
Oct	16.54	14.96
Nov	21.16	15.70
Dec	20.85	16.25
Jan'12	18.73	11.62
Feb	19.07	12.19
Mar	19.49	12.35
Apr	14.87	10.42

CONSUMER PRICE INDEX - NATIONAL

Department of National Planning
Ministry of Finance and Treasury

April 2012

Consumer Price Index-Nation April 2012

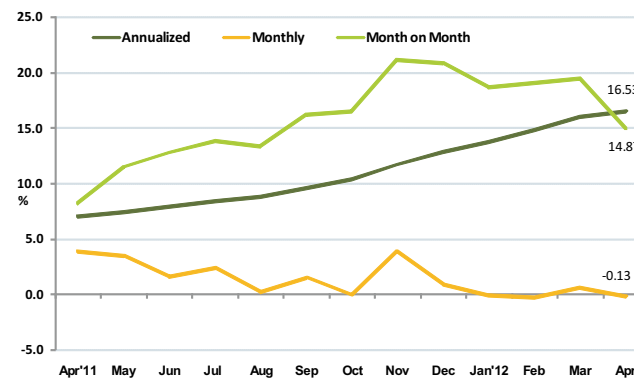
Inflation Rate of Nation

The Consumer Price Index (CPI) for nation rose at an annualized rate of 16.53 percent in April 2012. The inflation was driven mainly by fish, food & beverages and transport categories.

Monthly CPI of April 2012 decreased by 0.13 percent compared to March 2012. The deflation was mainly driven from food & beverages followed by tobacco and miscellaneous goods & services categories.

When April 2012 is compared with April 2011, the consumer price index increased by 14.87 percent. Tobacco category showed the highest inflation followed by fish and hotel, cafes & restaurants categories.

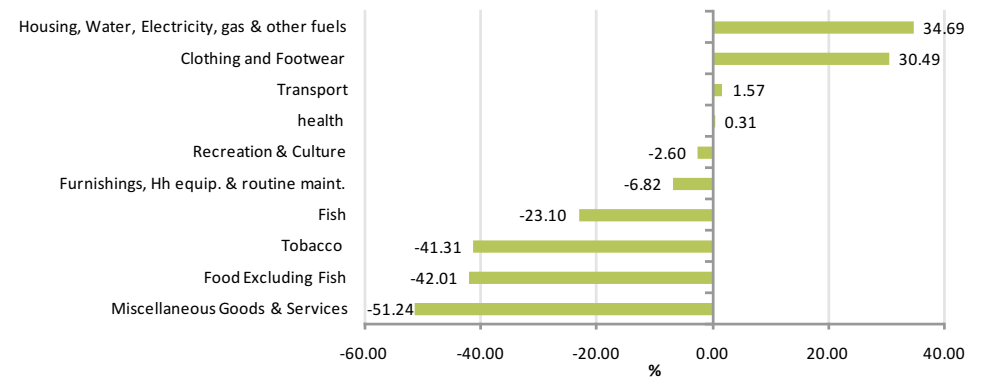
Figure 1: Inflation rates of Nation, April-2012



Month	Annualized	Monthly	Month on Month
Apr'11	6.98	3.88	8.16
May	7.37	3.44	11.40
Jun	7.89	1.64	12.68
Jul	8.33	2.43	13.79
Aug	8.79	0.21	13.36
Sep	9.56	1.51	16.24
Oct	10.32	-0.11	16.54
Nov	11.67	3.83	21.16
Dec	12.83	0.95	20.85
Jan'12	13.75	-0.08	18.73
Feb	14.83	-0.27	19.07
Mar	15.99	0.63	19.49
Apr	16.53	-0.13	14.87

Sources of changes in CPI - Monthly

Figure 2: Sources of changes in April CPI - Monthly



Major contributors to the change in the CPI- Monthly basis

Miscellaneous goods & services pulled down the national monthly inflation by 51%, whereas housing, water, electricity, gas & other fuels pulled up the overall monthly inflation by 35%. Among miscellaneous goods & services category, facial cream and hair oil prices decreased by 10% and 9% respectively in April compared to last month. Additionally body lotion, baby diapers, shampoo & hair cream prices declined in April. However, sanitary pad prices increased by 2% compared to March 2012. Additionally toothbrush and soap prices also registered a high price during the month.

As for housing, water, electricity, gas & other fuels category, cement prices increased by 7%. Plywood, cooking gas & rent also contributed to this hike.

Food & beverages and tobacco categories also contributed 42% and 41% respectively to pull down the national monthly inflation. While clothing & footwear & transport pulled up the monthly inflation by 30% and 2% respectively.

As for food & beverage category, both bean and onion prices decreased by 9%. Additionally both potato and carrot prices decreased by 8% and chicken drumstick prices decreased by 7%. Frozen chicken, banana, garlic, chicken sausage, tea bags, mixed fresh vegetables & coast milk powder declined in April. This decrease was the major factor in decline in food index. However, cucumber, cabbage, coconut, githayo mirus (local chilli), lemon, fresh tomato and orange registered a high price during the month.

In the tobacco category, aracunut prices decreased by 3% compared to March. Additionally cigarette prices decreased by 1% in April compared to March.

In the clothing & footwear category, mens sandals, trousers & sport shoe registered a price increase in April.

As for transport category, petrol prices increased by 4% while motorcycle prices increased by 2%.

1. Inflation Rate of Male' & Atolls (Monthly): compared to previous month

The monthly inflation rate for both Male' and atolls fluctuated over the period. Male' prices have shown fluctuations with inflation rate peaking in last year April followed by November 2011 and again in January 2012. This is due to the change in dollar exchange rate in April 2011 and the introduction of GST in selected products in October 2011 and due to the fact that GST increased to 6% in January 2012.

Figure 3. Monthly Inflation Rate, Male' & Atolls, (compared to the previous month)

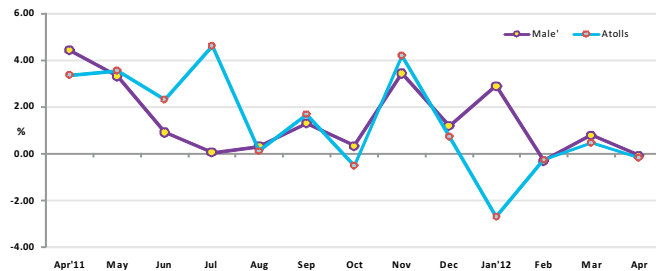
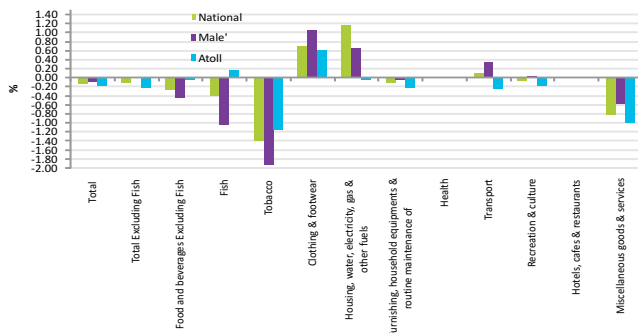


Figure 4. Inflation by major categories, National, Male' & Atolls, April 2012 (compared to the previous month)



The variation is huge between Male' and Atolls in July 2011. This is due to the fact that X-ray prices in the atolls increased by 22% compared to June 2011 which had a significant impact on the health category and pulled up the overall inflation of atolls.

However in atolls monthly CPI of January 2012 decreased by -2.69%. While in Male', monthly CPI of January 2012 increased by 2.90% compared to December 2012.

In atolls this decrease was due to the introduction of universal health care "Aasandha program" which pulled down the health sector inflation rate contributing to the overall deflation in atolls. Almost all the hospitals in the atolls are covered under this scheme, while in Male', most clinics are not.

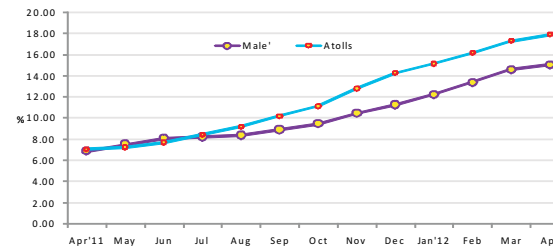
Figure 4 shows monthly inflation for major categories by National, Male' and Atolls, April 2012 compared to March 2012.

Inflation decreased for all major categories depicting a similar pattern as inflation in both, Male' and Atolls tend to move in the same direction with the exception of fish, housing, water, gas & other fuels and transport categories.

2. Inflation Rate of Male' & Atolls (Annualized): May '11 to April '12 / May '10 to April '11

The annualized inflation rate for both Male' and atolls increased over time with atolls inflation rate being highest at the end of April 2012. The increase on annualized inflation rate for Atolls was higher than that of Male' by 3 percentage points.

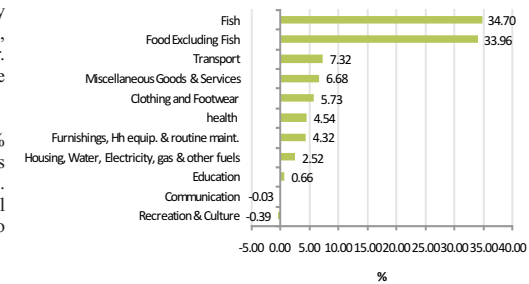
Figure 5. Annualized Inflation Rate, Male' & Atolls (compared to the past 12 month period)



From April 2011 inflation rate in the atolls is lower than the inflation rate in Male' and rose gradually from July 2011 onwards reaching 15.05% in April 2012 for Male' and 17.90% for Atolls

Annualized inflation rate of the nation was driven mainly by food & beverage and fish categories, which in total accounted for more than 69% of the change.

Figure 8: Sources of changes in April CPI - Annualized



Among food category, green chilli prices increased by 66%. Chicken sausage and carrot prices increased by 64% and 60% respectively. Other food items which showed a price increase above 40% were tea bag, curry powder, beans, cabbage, frozen beef, milo, apollo, butter bun, dried chilli, baby milk powder, canned pineapple, cooking oil, coke & milk powder. However, onion, garlic, coconut and ginger prices decreased during the period.

Both transport and miscellaneous goods & services contributed about 7% to pulled up the overall national annualized inflation. Motorcycle prices rose by 63% while cleaning of motorcycle prices increased by 12%. During the period petrol prices also increased by 49% and international airfare prices increased by 31%. Additionally domestic airfare prices also increased by 18%.

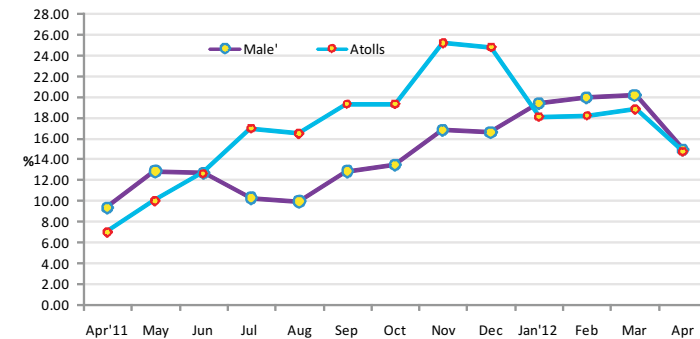
Clothing & footwear also contributed in driving the inflation up, about 6% for the overall inflation, with this effect slightly higher in Male' than in atolls. Among this category, tailoring women's blouse prices increased by 29% and sports shoes and dress material increased by 25% and 24% respectively during the period.

Health category also contributed in driving the inflation up, about 5% for the overall inflation, about 7% in Male' and 3% in the Atolls.

3. Inflation Rate of Male' & Atolls (month on month): April '12 / April '11

From April 2011 till June 2011 month on month inflation rate for atolls is lower than that of Male' and rose gradually from July till December 2011 and again starting from January 2012 onwards the month on month inflation rate for Atolls is lower than that of Male' reaching 14.77% in April for Atolls and 14.98% for Male'.

Figure 7. Month on Month inflation Rate, Male' & Atolls (compared to the same month of the previous year)



Annex 1: Average monthly Prices of selected Items, CPI National, Male' & Atolls, April 2012

Description	Specification	Unit	National - Monthly			Male' - Monthly			Atolls - Monthly		
			Average Price		% Chn	Average Price		% Chn	Average Price		% Chn
			Mar 2012	Apr 2012	Mar 2012 / Apr 2012	Mar 2012	Apr 2012	Mar 2012 / Apr 2012	Mar 2012	Apr 2012	Mar 2012 / Apr 2012
Food											
Biscuits	Cream Cracker, Khong Guan	200 gram, packet	13.29	13.34	0.41	13.37	13.37	0.00	13.20	13.31	0.84
Biscuits	Marie Biscuit	400 Gram	23.18	23.03	-0.69	22.19	21.89	-1.33	24.18	24.16	-0.10
Bread	Small Bread	1 Piece	12.59	12.56	-0.29	12.54	12.54	0.00	12.65	12.58	-0.57
Bread	Large	1 Piece	19.51	19.62	0.60	23.18	23.34	0.69	15.83	15.90	0.45
Bread spread	Chocolate Crumpy	225 Gram	43.57	45.22	3.79	42.83	42.52	-0.74	44.31	47.92	8.16
Butter bun	butter buns / Packed	1 Piece	4.32	4.33	0.24	4.12	4.16	1.05	4.52	4.50	-0.50
Noodles	Mamee Noodles / Packet	85 Gram	4.55	4.52	-0.84	4.15	4.14	-0.45	4.95	4.90	-1.16
Corn flake	Kellogg's / Wheat and Honey	300 Gram	37.50	37.82	0.84	44.01	44.64	1.44	31.00	31.00	0.00
Chicken sausage	Chicken Sausage / Packed	340 Gram	23.98	23.26	-2.99	21.71	20.52	-5.44	26.25	26.00	-0.95
Chicken drumsticks	Chicken drumstick	1 kg	74.36	69.10	-7.09	74.36	69.10	-7.09	-	-	-
Frozen chicken	Frozen chicken / Whole chicken / Pre packed	1 kg	59.33	55.73	-6.07	56.93	52.79	-7.26	61.73	58.66	-4.98
Egg	Chicken egg / Imported	1 Piece	1.66	1.65	-0.71	1.56	1.52	-2.57	1.76	1.78	0.94
Frozen beef	Frozen Beef	1 kg	68.30	67.25	-1.54	71.61	69.51	-2.93	65.00	65.00	0.00
Baby food - cereal	Nestum / Wheat & Honey	250 Gram / Tin	48.07	49.23	2.41	48.08	50.82	5.70	48.06	47.64	-0.88
Baby food - cereal	Promina / Banana	250 Gram / Packet	20.98	21.11	0.59	20.61	20.61	0.00	21.35	21.60	1.17
Baby milk powder	Anflace	450 Gram / Tin	174.39	172.42	-1.13	174.61	169.83	-2.74	174.17	175.00	0.48
Baby milk powder	S.M.A / Progress	450 Gram / Tin	125.90	125.90	0.00	122.83	122.83	0.00	128.96	128.96	0.00
Milk powder	Coast	1800 Gram, tin	264.59	258.96	-2.13	255.98	247.58	-3.28	273.19	270.33	-1.04
Milk powder	Anchor Milk	1800 Gram / Tin	258.72	258.72	0.00	276.24	276.24	0.00	241.19	241.19	0.00
Milk powder	Nido	1800 Gram / Tin	271.89	269.86	-0.75	269.36	264.89	-1.66	274.42	274.84	0.15
Condensed milk	Double Peach	397Gram, tin	15.64	15.75	0.72	14.94	15.27	2.21	16.34	16.23	-0.66
Condensed milk	Cow Bell	397 Gram / Tin	15.34	15.23	-0.70	14.98	14.72	-1.71	15.70	15.74	0.26
Dairy milk	Dutch Lady / Milk Pack / Small	250 MI	10.29	10.17	-1.10	9.93	9.70	-2.28	10.65	10.65	0.00
Margarine	Daisy brand tub / Small	250 Gram	27.76	27.60	-0.60	28.01	27.01	-3.59	27.52	28.19	2.45
Cooking oil	Bemoli Oil	2 Ltr	65.68	64.31	-2.09	60.75	58.87	-3.10	70.61	69.75	-1.22
Cooking oil	Sun Flower Oil	2 Ltr	104.92	102.45	-2.36	106.74	102.08	-4.37	103.11	102.82	-0.28
Orange	Fresh Orange	1 Piece	3.86	4.06	5.18	3.32	3.58	7.89	4.40	4.54	3.14
Canned mixed fruits	Canned Mixed Fruit / Small	398 Gram	29.37	29.24	-0.44	28.20	28.20	0.00	30.54	30.29	-0.85
Canned pine Apple	Canned Pine Apple	567 Gram	23.59	23.39	-0.88	22.85	22.64	-0.90	24.34	24.14	-0.85
lemon	Imported lemon	1 Piece	2.01	2.17	7.54	2.02	2.39	17.90	2.01	1.95	-2.93
Green chilli	Green Chilli / Imported	100 Gram	18.80	19.35	2.92	7.08	6.80	-3.97	30.52	31.90	4.51
Githeyo Mirus	Dhivehi mirus	1 Piece	2.67	2.90	8.48	2.53	2.70	6.76	2.82	3.10	10.03
Mixed fresh vegetables	Mixed Vegetables	1 kg	41.23	40.30	-2.25	43.69	40.76	-6.71	38.77	39.84	2.78
Tomato	Fresh Tomato	1Kg	33.60	35.40	5.37	30.75	29.40	-4.38	36.45	41.40	13.59
Cucumber	Fresh Cucumber	1 kg	23.03	28.28	22.84	25.02	33.41	33.54	21.03	23.16	10.11
Carrot	Fresh Carrot	1 kg	32.37	29.94	-7.52	28.08	26.54	-5.48	36.67	33.33	-9.09
Cabbage	Fresh Cabbage	1 kg	27.72	31.33	13.03	23.77	29.33	23.37	31.67	33.33	5.26
Beans	Fresh Beans	1 kg	57.69	52.20	-9.53	55.38	54.39	-1.79	60.00	50.00	-16.67
Garlic	Garlic	100 Gram	5.26	5.05	-4.01	4.57	4.17	-8.87	5.95	5.94	-0.28
Ginger	Ginger	100 Gram	5.53	5.54	0.01	4.19	4.04	-3.57	6.88	7.03	2.18
Potato	Imported Potato	1 kg	10.80	9.97	-7.67	9.73	9.31	-4.30	11.87	10.63	-10.44
Canned baked beans	Baked Beans / Canned	400 Gram	14.34	14.55	1.51	14.36	14.43	0.53	14.32	14.67	2.49
Dhal	Yellow Colored Dhal	1 kg	50.59	50.15	-0.86	50.32	48.92	-2.77	50.86	51.38	1.03
Curry powder	Curry Powder / Antelope brand / Canned	340 Gram	40.20	39.47	-1.81	43.60	42.15	-3.33	36.79	36.79	0.00
Curry powder	Fish curry powder / Packed locally	50 Gram	7.10	7.10	0.04	6.66	6.77	1.60	7.54	7.44	-1.34
Curry powder	Chicken curry powder / Packed locally	50 Gram	7.07	7.14	0.95	6.75	6.92	2.46	7.40	7.36	-0.42
Dried Chilli	Dried Chilli (Hikimirus) / Loose	1 kg	89.08	88.19	-1.00	96.50	92.48	-4.16	81.67	83.89	2.72
Chillie powder	Chillie Powder / Packed Locally	50 Gram	7.33	7.30	-0.36	6.70	6.80	1.56	7.97	7.81	-1.98
Onion	Imported Onion	1 kg	10.98	10.03	-8.70	9.97	9.71	-2.55	12.00	10.34	-13.81
Tea leaves-tea bag	Today's Taste / 100 tea bag	200 Gram	34.54	34.80	0.76	34.36	34.27	-0.26	34.72	35.33	1.77
Tea leaves-tea bag	Melesna / 100 tea bag	200 Gram	37.97	37.80	-0.44	44.93	44.93	0.00	31.00	30.67	-1.08
Tea leaves-tea bag	Akbar / 100 tea bag	200 Gram	36.63	36.39	-0.67	35.75	35.08	-1.89	37.51	37.70	0.50
Coffee	Nescafe, Cafe' soluble coffee / Canned	50 Gram	41.28	41.91	1.53	41.79	42.15	0.86	40.77	41.67	2.21
Juice-Sun quick	Sun quick / Orange Juice / Bottled	840 MI	74.82	74.57	-0.32	74.28	73.38	-1.21	75.35	75.77	0.55
Juice-Foster Clark	Foster Clark / Powdered Juice / Bottled	750 Gram	66.70	67.08	0.58	66.45	65.99	-0.69	66.94	68.17	1.84
Milo	Nestle Milo Powder / Canned	400 Gram	84.11	84.25	0.17	86.22	86.14	-0.09	81.99	82.36	0.45
Candy	Solano	1 Piece / 25 Gram	0.38	0.38	1.25	0.32	0.32	0.00	0.44	0.45	2.14
Coke	Dubai coke / Canned	300 MI	10.68	10.85	1.51	10.90	11.21	2.77	10.46	10.49	0.20
Coke	Coca Cola / Large Bottle	1500 MI	31.10	30.93	-0.55	30.26	30.10	-0.53	31.94	31.76	-0.58
Araacanut	Raw Araacanut / Uncut / Loose	1 kg	102.95	100.03	-2.83	92.61	90.03	-2.78	113.29	110.04	-2.86
Cigarette	Marlboro	20 Piece / 1 Pack	38.93	38.53	-1.00	39.44	38.66	-1.98	38.41	38.41	0.00
Cigarette	Benson	20 Piece / 1 Pack	35.83	35.44	-1.09	39.44	38.66	-1.98	32.22	32.22	0.00
Saltish short-eats	Handulu gulha	1 Piece	1.42	1.42	0.00	1.17	1.17	0.00	1.67	1.67	0.00
Sweet short-eats	Foni folhi	1 Piece	2.35	2.35	0.00	2.37	2.37	0.00	2.33	2.33	0.00
Juice-Sun quick	Sun quick / Orange Juice / Bottled	840 MI	73.87	74.28	0.55	75.30	75.35	0.07	74.59	74.82	0.31
Fish											
Canned fish in oil	Felivaru canned fish / Chunk in Oil	185 Gram	18.90	18.92	0.11	18.16	18.16	-0.01	19.64	19.68	0.22
Canned fish in brine	Felivaru Canned Fish / Chunk in Brine	185 Gram	17.43	17.42	-0.04	17.09	16.95	-0.83	17.77	17.90	0.72
Smoked fish	Smoked Fish (Valhoamas) / Loose	1 kg	119.37	116.20	-2.66	148.73	142.39	-4.26	90.00	90.00	0.00
Clothing and Footwear											
Men's t-shirt	Men Shirt / Most Sold Brand	1 Piece	197.34	199.01	0.84	182.80	186.13	1.82	211.88	211.88	0.00
Men's shirt	Men T-Shirt / Most Sold material	1 Piece	203.67	204.92	0.61	219.95	219.95	0.00	187.39	189.89	1.33
Men's trousers	Men's Trousers / Long	1 Piece	237.00	241.52	1.91	224.60	229.60	2.23	249.40	253.44	1.62

Description	Specification	Unit	National - Monthly			Male' - Monthly			Atolls - Monthly		
			Average Price		% Chn	Average Price		% Chn	Average Price		% Chn
			Mar 2012	Apr 2012	Mar 2012 / Apr 2012	Mar 2012	Apr 2012	Mar 2012 / Apr 2012	Mar 2012	Apr 2012	Mar 2012 / Apr 2012
Men's jeans	Mend's Jeans / Most Sold Material	1 Piece	264.10	263.52	-0.22	295.43	295.43	0.00	232.78	231.61	-0.50
Women's t-shirt	Ladies T - shirt / Most sold Brand	1 Piece	169.14	169.14	0.00	191.03	191.03	0.00	147.25	147.25	0.00
Dress material	Most often sold material / Plane / Faatufulhaa	1 Muh	34.27	34.27	0.00	39.04	39.04	0.00	29.50	29.50	0.00
Tailoring women's blouse	Sewing of blouse	1 Piece	75.62	73.70	-2.55	75.00	75.00	0.00	76.25	72.40	-5.05
School shoes	School Shoes/ Girl / Most recently sold	1 Pair	188.20	188.40	0.11	192.20	188.50	-1.93	184.19	188.29	2.23
Sport shoes	Diadora / Indoor tennis shoes / Men	1 Pair	390.82	396.73	1.51	357.08	357.08	0.00	424.56	436.38	2.78
Men's sandals	Most recently sold brand	1 Pair	230.98	237.81	2.96	192.57	196.83	2.22	269.39	278.80	3.49
Women's sandals	Casual (home-wear)	1 Piece	178.21	172.62	-3.13	209.11	200.00	-4.36	147.31	145.25	-1.40
Housing											
Kerosene oil	Kerosene oil	1 Ltr	16.90	16.89	-0.05	16.56	16.56	0.00	17.25	17.23	-0.09
Cooking gas	Cooking gas / Excluding Transport cost	13 Kg	340.63	341.26	0.19	390.00	390.00	0.00	291.25	292.52	0.44
Cement	Cement bag	50 kg	114.05	122.50	7.41	105.51	122.00	15.63	122.60	123.00	0.33
Plywood	3 mm	1 Piece	136.46	140.33	2.83	159.10	166.82	4.85	113.83	113.83	0.00
Roofing sheet	0.6 mm / 1 feet	1 Piece	33.15	33.04	-0.35	30.24	30.24	0.00	36.06	35.83	-0.64
Transport											
Motorcycle	Honda Wave 125 I	1 Piece	55,247.42	56,480.33	2.23	55,683.00	57,028.00	2.42	54,811.83	55,932.67	2.04
Motorcycle	Honda Wave 125 H	1 Piece	51,357.17	51,551.33	0.38	50,456.00	50,456.00	0.00	52,258.33	52,646.67	0.74
Petrol	Petrol	1 Ltr	16.10	16.70	3.68	15.67	16.54	5.57	16.54	16.85	1.89
International airfare	Male'/Colombo/male'	Per Person	5,205.18	5,157.99	-0.91	5,205.18	5,157.99	-0.91	-	-	-
Domestic airfare	Male'/Gan/Male'	Per Person / Adult	3,379.28	3,392.00	0.38	3,379.28	3,392.00	0.38	-	-	-
Domestic airfare	Male'/Hanimadhoo/Male'	Per Person / Adult	2,637.28	2,650.00	0.48	2,637.28	2,650.00	0.48	-	-	-
Domestic airfare	Male'/Kade'dhoo/ Male'	Per Person / Adult	3,008.28	3,021.00	0.42	3,008.28	3,021.00	0.42	-	-	-
Domestic airfare	Male'/Kah'dhoo/male'	Per Person / Adult	2,637.28	2,650.00	0.48	2,637.28	2,650.00	0.48	-	-	-
Miscellaneous											
Haircut-female	Female Hair Cut	Per Person	88.79	88.79	0.00	161.33	161.33	0.00	16.25	16.25	0.00
Haircut-men	Male Hair Cut	Per Person	36.75	36.75	0.00	59.75	59.75	0.00	13.75	13.75	0.00
Baby diapers	Huggies / Small Size	1 Packet	150.20	146.99	-2.13	144.24	149.52	3.66	156.16	144.47	-7.49
Sanitary pads	Stay Free	1 Packet	15.07	15.40	2.19	15.83	16.28	2.82	14.30	14.52	1.50
Sanitary pads	Riaa	1 Packet	14.93	14.97	0.29	13.81	13.87	0.40	16.04	16.07	0.19
Soap	Lux Soap	100 Gram	6.13	6.20	1.08	6.59	6.70	1.56	5.67	5.70	0.53
Facial cream	Fair & Lovely / Facial Cream	25 Gram	23.92	22.53	-5.81	26.64	24.03	-9.77	21.20	21.02	-0.84
Facial cream	Fair Glow / Facial Cream	25 Gram	27.78	24.24	-12.74	-	-	-	27.78	24.24	-12.74
Baby lotion	Johnson & Johnson Baby Lotion	200 MI, bottle	36.14	36.46	0.88	35.25	36.00	2.13	37.03	36.92	-0.32
Baby cologne	Baby Cheramyl Cologne	175 ml	32.04	32.03	0.00	35.37	35.84	1.33	28.70	28.23	-1.64
Cologne	Splash	200 MI	26.17	26.33	0.62	24.84	24.55	-1.18	27.49	28.11	2.25
Cologne	Loviline	175 ml	27.16	26.96	-0.74	28.23	27.65	-2.05	26.09	26.26	0.68
Hair cream	Max	175 ml	34.26	34.35	0.26	34.99	34.99	0.01	33.53	33.70	0.51
Hair cream	Elite	175 ml	34.89	34.63	-0.76	37.10	36.57	-1.43	32.69	32.69	0.00
Hair oil	Bertolli	100 MI,bottle	29.80	27.08	-9.14	30.50	25.90	-15.08	29.10	28.25	-2.92
Shampoo	Emerone	200 MI	26.89	26.94	0.19	26.24	25.81	-1.64	27.54	28.07	1.93
Shampoo	Head & shoulders	200 MI	39.64	39.14	-1.25	39.22	38.69	-1.37	40.05	39.60	-1.13
Shampoo	Pantene Pro vitamin	200 MI	37.30	37.05	-0.68	37.63	36.71	-2.44	36.97	37.38	1.12

Annex 2: Average annual Prices of of selected Items, CPI National, Male' & Atolls, April 2012

Description	Specification	Unit	National - Annualized			Male' - Annualized			Atolls - Annualized		
			Average 12 monthly price			Average 12 monthly price			Average 12 monthly price		
			May 2010-Apr 2011	May 2011-Apr 2012	% Chn	May 2010-Apr 2011	May 2011-Apr 2012	% Chn	May 2010-Apr 2011	May 2011-Apr 2012	% Chn
Food											
Biscuits	Cream Cracker, Khong Guan	200 gram, packet	9.56	12.44	30.12	9.20	12.33	34.01	9.92	12.55	26.52
Biscuits	Marie Biscuit	400 Gram	16.97	21.17	24.71	15.77	20.24	28.33	18.18	22.10	21.58
Bread	Small Bread	1 Piece	9.97	12.02	20.61	10.37	12.41	19.65	9.56	11.63	21.65
Bread	Large	1 Piece	17.34	19.37	11.70	20.44	23.25	13.75	14.24	15.48	8.76
Bread spread	Chocolate Crumpy	225 Gram	31.12	40.29	29.44	36.59	38.16	4.29	25.65	42.41	65.32
Butter bun	butter buns / Packed	1 Piece	3.09	4.40	42.57	3.54	4.06	14.67	2.64	4.75	80.06
Noodles	Mamee Noodles / Packet	85 Gram	3.71	4.50	21.34	3.50	4.15	18.33	3.92	4.86	24.03
Corn flake	Kellogg's / Wheat and Honey	300 Gram	31.72	36.57	15.28	42.99	42.39	-1.39	20.45	30.75	50.33
Chicken sausage	Chicken Sausage / Packed	340 Gram	14.09	23.08	63.83	16.76	21.50	28.25	11.42	24.67	116.06
Frozen chicken	Frozen chicken / Whole chicken / Pre packed	1 kg	42.09	56.96	35.32	38.27	54.48	42.36	45.91	59.44	29.45
Egg	Chicken egg / Imported	1 Piece	1.55	1.83	17.64	1.50	1.74	16.42	1.61	1.91	18.77
Frozen beef	Frozen Beef	1 kg	44.80	65.03	45.15	48.71	65.05	33.54	40.89	65.00	58.98
Baby food - cereal	Nestum / Wheat & Honey	250 Gram / Tin	37.42	46.09	23.17	37.00	47.14	27.41	37.84	45.04	19.03
Baby food - cereal	Promina / Banana	250 Gram / Packet	17.65	19.90	12.75	16.85	19.46	15.49	18.45	20.34	10.25
Baby milk powder	Aniface	450 Gram / Tin	118.46	167.57	41.46	130.90	166.35	27.08	106.01	168.78	59.21
Baby milk powder	S.M.A / Progress	450 Gram / Tin	103.43	124.61	20.48	110.32	121.41	10.05	96.53	127.81	32.40
Milk powder	Coast	1800 Gram, tin	203.91	258.04	26.55	201.40	250.70	24.48	206.41	265.39	28.57
Milk powder	Anchor Milk	1800 Gram / Tin	206.16	248.10	20.34	205.53	269.66	31.20	206.80	226.54	9.55
Milk powder	Nido	1800 Gram / Tin	185.89	259.97	39.85	193.31	264.00	36.57	178.47	255.94	43.41
Condensed milk	Double Peach	397Gram, tin	11.85	15.13	27.74	11.55	14.72	27.50	12.14	15.54	27.97
Condensed milk	Cow Bell	397 Gram / Tin	11.31	14.56	28.78	10.84	14.47	33.48	11.78	14.66	24.44
Dairy milk	Dutch Lady / Milk Pack / Small	250 Ml	7.22	9.70	34.35	7.07	9.44	33.55	7.37	9.96	35.11
Margarine	Daisy brand tub / Small	250 Gram	19.81	25.59	29.17	20.02	25.47	27.23	19.60	25.71	31.16
Cooking oil	Bemoli Oil	2 Ltr	48.46	68.07	40.48	47.35	65.43	38.18	49.56	70.71	42.68
Cooking oil	Sun Flower Oil	2 Ltr	74.86	98.20	31.18	73.61	101.26	37.55	76.11	95.15	25.02
Orange	Fresh Orange	1 Piece	4.01	4.44	10.55	3.73	3.92	5.06	4.29	4.95	15.33
Canned mixed fruits	Canned Mixed Fruit / Small	398 Gram	25.34	29.99	18.36	25.39	29.89	17.70	25.28	30.09	19.02
Canned pine Apple	Canned Pine Apple	567 Gram	15.49	21.91	41.41	15.16	21.31	40.59	15.82	22.50	42.20
Coconut	Medium size / Coconut	1 Piece	6.36	5.60	-11.88	6.36	5.60	-11.88	-	-	-
lemon	Imported lemon	1 Piece	1.93	2.14	10.89	1.86	2.09	12.16	2.00	2.19	9.71
Green chilli	Green Chilli / Imported	100 Gram	9.11	15.10	65.89	9.69	7.31	-24.59	8.52	22.90	168.86
Tomato	Fresh Tomato	1Kg	25.72	34.29	33.30	30.55	33.31	9.02	20.89	35.26	68.81
Carrot	Fresh Carrot	1 kg	21.41	34.24	59.94	25.84	29.50	14.17	16.97	38.97	129.65
Cabbage	Fresh Cabbage	1 kg	22.16	33.35	50.47	28.15	29.73	5.60	16.18	36.97	128.55
Beans	Fresh Beans	1 kg	40.84	61.96	51.70	50.33	56.42	12.09	31.35	67.50	115.28
Garlic	Garlic	100 Gram	6.99	6.09	-12.84	7.00	4.86	-30.52	6.98	7.32	4.90
Ginger	Ginger	100 Gram	6.41	5.74	-10.40	5.73	4.20	-26.78	7.08	7.29	2.86
Canned baked beans	Baked Beans / Canned	400 Gram	11.33	13.69	20.82	11.01	13.46	22.31	11.66	13.92	19.42
Dhal	Yellow Colored Dhal	1 kg	43.88	49.19	12.09	43.66	47.40	8.55	44.10	50.98	15.60
Curry powder	Curry Powder / Antelope brand / Canned	340 Gram	24.08	38.67	60.58	30.84	39.25	27.27	17.32	38.09	119.86
Curry powder	Fish curry powder / Packed locally	50 Gram	5.31	6.84	28.91	5.08	6.49	27.70	5.53	7.19	30.02
Curry powder	Chicken curry powder / Packed locally	50 Gram	4.79	6.83	42.58	5.07	6.58	29.77	4.52	7.09	56.95
Dried Chilli	Dried Chilli (Hikimirus) / Loose	1 kg	55.80	79.27	42.07	52.73	80.16	52.03	58.87	78.38	33.14
Chilli powder	Chillie Powder / Packed Locally	50 Gram	5.33	7.01	31.56	5.07	6.47	27.68	5.59	7.55	35.08
Onion	Imported Onion	1 kg	20.29	16.55	-18.40	18.89	14.64	-22.51	21.68	18.47	-14.82
Tea leaves-tea bag	Today's Taste / 100 tea bag	200 Gram	24.67	32.48	31.63	24.84	32.71	31.69	24.51	32.25	31.57
Tea leaves-tea bag	Melesna / 100 tea bag	200 Gram	22.96	35.01	52.50	25.60	38.55	50.59	20.32	31.47	54.91
Tea leaves-tea bag	Akbar / 100 tea bag	200 Gram	20.66	34.58	67.38	24.85	34.20	37.64	16.48	34.97	112.23
Coffee	Nescafe, Cafe' soluble coffee / Canned	50 Gram	31.21	39.47	26.46	31.04	39.95	28.72	31.39	38.99	24.23
Juice-Sun quick	Sun quick / Orange Juice / Bottled	840 Ml	57.93	69.93	20.72	56.35	69.47	23.30	59.51	70.40	18.29
Juice-Foster Clark	Foster Clark / Powdered Juice / Bottled	750 Gram	54.88	64.63	17.78	54.55	64.32	17.91	55.20	64.95	17.66
Milo	Nestle Milo Powder / Canned	400 Gram	53.37	76.53	43.40	53.58	79.32	48.06	53.16	73.73	38.70
Apollo	Milk choco / Wafer cream	1 Piece	1.38	1.98	43.36	1.38	1.98	43.36	-	-	-
Candy	Solano	1 Piece / 25 Gram	0.39	0.43	10.76	0.45	0.43	-4.19	0.33	0.43	30.89
Coke	Dubai coke / Canned	300 Ml	7.36	10.33	40.33	7.08	10.30	45.46	7.64	10.35	35.56
Coke	Coca Cola / Large Bottle	1500 Ml	23.28	30.02	28.91	24.01	29.04	20.95	22.56	30.99	37.38
Aracanut	Raw Aracanut / Uncut / Loose	1 kg	53.11	99.76	87.83	49.41	98.22	98.78	56.81	101.30	78.31
Cigarette	Marlboro	20 Piece / 1 Pack	19.80	29.69	49.92	19.74	29.92	51.59	19.87	29.46	48.27
Cigarette	Benson	20 Piece / 1 Pack	17.49	27.72	58.44	18.78	29.92	59.29	16.20	25.52	57.46
Saltish short-eats	Handulu gulha	1 Piece	1.35	1.59	17.86	1.35	1.51	11.49	1.34	1.67	24.30
Sweet short-eats	Foni folhi	1 Piece	1.73	2.21	27.46	2.00	2.21	10.51	1.46	2.20	50.63
Jam	Tova Brand / Botlle	450 Gram	22.09	24.31	10.05	22.20	24.14	8.73	21.99	24.49	11.39
Tomato paste	Tomato Paste / Small can	70 Gram	2.70	2.96	9.37	2.47	2.80	13.34	2.93	3.11	6.02
Sauce	Tomato Sauce / life Brand	320 Gram / Bottled	10.50	12.64	20.35	10.17	12.95	27.33	10.84	12.33	13.80
Sauce	Chillie Sauce / life Brand	335 Gram / Bottled	11.15	13.80	23.81	11.18	14.69	31.42	11.11	12.91	16.16
Sauce	Chillie & Garlic Sauce / life Brand	320 Gram / Bottled	12.00	14.71	22.54	12.13	15.59	28.56	11.87	13.82	16.38
Fish											
Canned fish in oil	Felivaru canned fish / Chunk in Oil	185 Gram	15.75	18.56	17.86	15.44	18.06	16.98	16.07	19.07	18.69
Canned fish in brine	Felivaru Canned Fish / Chunk in Brine	185 Gram	13.92	16.86	21.14	13.85	16.86	21.74	13.99	16.87	20.55
Smoked fish	Smoked Fish (Valhoamas) / Loose	1 kg	54.27	119.96	121.04	61.67	123.26	99.88	46.88	116.67	148.89
Clothing and Footwear											

Description	Specification	Unit	National - Annualized			Male' - Annualized			Atolls - Annualized		
			Average 12 monthly price			Average 12 monthly price			Average 12 monthly price		
			May 2010-Apr 2011	May 2011-Apr 2012	% Chn	May 2010-Apr 2011	May 2011-Apr 2012	% Chn	May 2010-Apr 2011	May 2011-Apr 2012	% Chn
Men's t-shirt	Men Shirt / Most Sold Brand	1 Piece	151.53	184.38	21.68	155.69	174.55	12.11	147.36	194.22	31.80
Men's shirt	Men T-Shirt / Most Sold material	1 Piece	162.36	198.69	22.37	168.40	201.80	19.83	156.32	195.58	25.12
Men's trousers	Men's Trousers / Long	1 Piece	198.86	225.69	13.49	180.97	223.54	23.52	216.75	227.84	5.11
Men's jeans	Mend's Jeans / Most Sold Material	1 Piece	216.18	250.82	16.02	219.72	270.15	22.95	212.64	231.49	8.87
Women's t-shirt	Ladies T - shirt / Most sold Brand	1 Piece	134.65	165.53	22.93	151.67	185.64	22.40	117.64	145.42	23.62
Dress material	Most often sold material / Plane / Faatufulhaa	1 Muh	24.32	30.17	24.02	25.00	31.84	27.38	23.65	28.49	20.47
Tailoring women's blouse	Sewing of blouse	1 Piece	56.88	73.33	28.93	70.00	74.79	6.85	43.75	71.87	64.27
School shoes	School Shoes/ Girl / Most recently sold	1 Pair	139.25	170.70	22.59	137.64	174.44	26.74	140.86	166.97	18.54
Sport shoes	Diadora / Indoor tennis shoes / Men	1 Pair	298.24	372.64	24.95	272.50	324.81	19.20	323.98	420.46	29.78
Men's sandals	Most recently sold brand	1 Pair	186.79	228.18	22.15	150.56	182.67	21.33	223.03	273.69	22.71
Women's sandals	Casual (home-wear)	1 Piece	132.79	157.84	18.87	137.08	171.59	25.17	128.49	144.09	12.14
Housing											
Kerosene oil	Kerosene oil	1 Ltr	12.50	16.06	28.47	11.79	15.66	32.81	13.21	16.45	24.59
Cooking gas	Cooking gas / Excluding Transport cost	13 Kg	253.63	334.12	31.74	296.00	385.00	30.07	211.25	283.23	34.07
Cement	Cement bag	50 kg	85.79	109.45	27.57	80.88	101.35	25.31	90.71	117.54	29.58
Plywood	3 mm	1 Piece	103.49	123.55	19.38	112.29	134.12	19.44	94.69	112.99	19.32
Roofing sheet	0.6 mm / 1 feet	1 Piece	21.78	28.07	28.89	25.90	27.54	6.35	17.65	28.59	61.96
Transport											
Motorcycle	Honda Wave 125 I	1 Piece	44,435.35	52,870.85	18.98	45,000.00	53,516.50	18.93	43,870.69	52,225.20	19.04
Motorcycle	Honda Wave 125 H	1 Piece	37,083.33	48,364.69	30.42	39,666.67	47,319.33	19.29	34,500.00	49,410.06	43.22
Motorcycle	Honda Wave 125 R	1 Piece	19,833.33	47,319.33	138.58	-	-	-	19,833.33	47,319.33	138.58
Petrol	Petrol	1 Ltr	10.78	16.05	48.92	11.50	15.98	38.95	10.05	16.12	60.34
Cleaning of motorcycle	Full cycle	Per vehicle	70.00	78.17	11.67	70.00	78.17	11.67	-	-	-
International airfare	Male'/Colombo/male'	Per Person	3,994.17	5,214.11	30.54	3,994.17	5,214.11	30.54	-	-	-
Domestic airfare	Male'/Gan/Male'	Per Person / Adult	2,805.92	3,295.05	17.43	2,805.92	3,295.05	17.43	-	-	-
Domestic airfare	Male'/Hanimadhoo/Male'	Per Person / Adult	2,164.25	2,574.10	18.94	2,164.25	2,574.10	18.94	-	-	-
Domestic airfare	Male'/Kade'dhoo/ Male'	Per Person / Adult	2,485.08	2,935.00	18.10	2,485.08	2,935.00	18.10	-	-	-
Domestic airfare	Male'/Kah'dhoo/male'	Per Person / Adult	2,164.25	2,574.10	18.94	2,164.25	2,574.10	18.94	-	-	-
Miscellaneous											
Haircut-female	Female Hair Cut	Per Person	66.84	82.87	23.98	122.22	149.49	22.31	11.46	16.25	41.82
Haircut-men	Male Hair Cut	Per Person	21.16	32.92	55.56	31.81	51.46	61.80	10.52	14.38	36.71
Baby diapers	Huggies / Small Size	1 Packet	126.11	143.51	13.80	126.43	143.18	13.25	125.78	143.85	14.36
Sanitary pads	Stay Free	1 Packet	12.66	14.77	16.64	12.85	14.69	14.32	12.47	14.84	19.03
Sanitary pads	Riaa	1 Packet	17.12	14.82	-13.42	18.29	13.71	-25.08	15.95	15.94	-0.05
Soap	Lux Soap	100 Gram	4.82	5.45	13.15	4.64	5.52	18.96	4.99	5.37	7.73
Facial cream	Fair & Lovely / Facial Cream	25 Gram	16.95	19.93	17.59	16.25	19.34	19.08	17.65	20.52	16.23
Baby lotion	Johnson & Johnson Baby Lotion	200 Ml, bottle	29.39	34.27	16.62	29.84	34.10	14.29	28.94	34.44	19.01
Baby cologne	Baby Cheramny Cologne	175 ml	19.89	30.73	54.52	20.58	32.92	59.93	19.19	28.54	48.71
Cologne	Splash	200 ml	19.94	24.33	22.00	19.34	23.44	21.18	20.54	25.22	22.77
Cologne	Loviline	175 ml	20.68	25.37	22.66	20.81	27.00	29.79	20.56	23.74	15.44
Hair cream	Max	175 ml	26.33	32.15	22.11	26.31	32.84	24.83	26.35	31.45	19.38
Hair cream	Elite	175 ml	20.45	33.19	62.30	24.35	34.63	42.24	16.55	31.74	91.81
Hair oil	Bertolli	100 Ml,bottle	25.67	28.21	9.90	28.85	28.34	-1.75	22.49	28.08	24.86
Shampoo	Emerone	200 Ml	18.10	24.67	36.29	16.75	24.07	43.75	19.46	25.27	29.87
Shampoo	Head & shoulders	200 Ml	31.92	37.64	17.91	31.28	39.05	24.82	32.56	36.23	11.28
Shampoo	Pantene Pro vitamin	200 Ml	30.63	34.35	12.15	29.38	33.87	15.26	31.88	34.84	9.28

Annex 3: Average month on month prices of of selected Items,, CPI National, Male' & Atolls, April 2012

Description	Specification	Unit	National - Month on Month			Male' - Month on Month			Atolls - Month on Month			
			Average Price			Average Price			% Chn	Average Price		
			Apr-11	Apr-12	% Chn	Apr-11	Apr-12	Apr-11		Apr-12	% Chn	
Food												
Biscuits	Cream Cracker, Khong Guan	200 gram, packet	10.75	13.34	24.15	11.00	13.37	21.55	10.49	13.31	26.88	
Biscuits	Marie Biscuit	400 Gram	17.15	23.03	34.27	15.89	21.89	37.79	18.41	24.16	31.23	
Bread	Small Bread	1 Piece	10.56	12.56	18.95	11.89	12.54	5.44	9.23	12.58	36.37	
Bread	Large	1 Piece	18.61	19.62	5.42	22.80	23.34	2.37	14.43	15.90	10.25	
Bread spread	Chocolate Crumpy	225 Gram	38.86	45.22	16.36	36.56	42.52	16.31	41.17	47.92	16.41	
Butter bun	butter buns / Packed	1 Piece	3.63	4.33	19.39	3.75	4.16	10.89	3.50	4.50	28.49	
Noodles	Mamee Noodles / Packet	85 Gram	3.83	4.52	17.84	3.70	4.14	11.76	3.96	4.90	23.52	
Chicken sausage	Chicken Sausage / Packed	340 Gram	22.86	23.26	1.77	20.71	20.52	-0.92	25.00	26.00	4.00	
Frozen chicken	Frozen chicken / Whole chicken / Pre packed	1 kg	42.95	55.73	29.75	41.00	52.79	28.76	44.89	58.66	30.66	
Egg	Chicken egg / Imported	1 Piece	1.51	1.65	8.74	1.50	1.52	1.00	1.53	1.78	16.33	
Frozen beef	Frozen Beef	1 kg	57.81	67.25	16.33	50.63	69.51	37.30	65.00	65.00	0.00	
Baby food - cereal	Nestum / Wheat & Honey	250 Gram / Tin	40.15	49.23	22.62	40.10	50.82	26.73	40.19	47.64	18.53	
Baby food - cereal	Promina / Banana	250 Gram / Packet	17.52	21.11	20.46	17.00	20.61	21.26	18.04	21.60	19.71	
Baby milk powder	Anflace	450 Gram / Tin	133.95	172.42	28.72	135.40	169.83	25.43	132.50	175.00	32.08	
Baby milk powder	S.M.A / Progress	450 Gram / tin	115.31	125.90	9.18	106.25	122.83	15.60	124.38	128.96	3.69	
Milk powder	Coast	1800 Gram, tin	221.60	258.96	16.86	221.38	247.58	11.84	221.83	270.33	21.86	
Milk powder	Anchor Milk	1800 Gram / Tin	230.86	258.72	12.07	229.71	276.24	20.26	232.00	241.19	3.96	
Milk powder	Nido	1800 Gram / Tin	203.66	269.86	32.51	200.00	264.89	32.45	207.31	274.84	32.57	
Condensed milk	Double Peach	397Gram, tin	12.20	15.75	29.13	12.15	15.27	25.64	12.24	16.23	32.58	
Condensed milk	Cow Bell	397 Gram / Tin	11.96	15.23	27.31	11.43	14.72	28.81	12.50	15.74	25.94	
Dairy milk	Dutch Lady / Milk Pack / Small	250 MI	7.50	10.17	35.66	7.50	9.70	29.32	7.50	10.65	42.00	
Margarine	Daisy brand tub / Small	250 Gram	22.94	27.60	20.33	23.30	27.01	15.91	22.57	28.19	24.90	
Cooking oil	Bemoli Oil	2 Ltr	59.90	64.31	7.37	62.14	58.87	-5.27	57.65	69.75	20.99	
Cooking oil	Sun Flower Oil	2 Ltr	81.01	102.45	26.46	80.67	102.08	26.54	81.36	102.82	26.37	
Orange	Fresh Orange	1 Piece	4.51	4.06	-9.98	4.56	3.58	-21.48	4.46	4.54	1.75	
Canned mixed fruits	Canned Mixed Fruit / Small	398 Gram	27.70	29.24	5.57	27.33	28.20	3.17	28.07	30.29	7.91	
Canned pine Apple	Canned Pine Apple	567 Gram	15.54	23.39	50.55	15.43	22.64	46.74	15.64	24.14	54.30	
lemon	Imported lemon	1 Piece	2.03	2.17	6.73	1.94	2.39	23.16	2.12	1.95	-8.27	
Green chilli	Green Chilli / Imported	100 Gram	13.08	19.35	47.89	9.50	6.80	-28.47	16.67	31.90	91.41	
Tomato	Fresh Tomato	1Kg	29.94	35.40	18.23	29.89	29.40	-1.62	30.00	41.40	38.00	
Carrot	Fresh Carrot	1 kg	29.44	29.94	1.67	25.56	26.54	3.85	33.33	33.33	0.00	
Cabbage	Fresh Cabbage	1 kg	26.93	31.33	16.32	22.20	29.33	32.10	31.67	33.33	5.26	
Beans	Fresh Beans	1 kg	60.90	52.20	-14.29	51.80	54.39	5.00	70.00	50.00	-28.57	
Garlic	Garlic	100 Gram	8.29	5.05	-39.03	10.25	4.17	-59.34	6.32	5.94	-6.10	
Ginger	Ginger	100 Gram	5.96	5.54	-7.15	4.91	4.04	-17.79	7.01	7.03	0.30	
Canned baked beans	Baked Beans / Canned	400 Gram	11.72	14.55	24.19	11.83	14.43	21.97	11.60	14.67	26.46	
Dhal	Yellow Colored Dhal	1 kg	46.30	50.15	8.33	44.60	48.92	9.70	48.00	51.38	7.06	
Curry powder	Curry Powder / Antelope brand / Canned	340 Gram	32.43	39.47	21.72	31.86	42.15	32.32	33.00	36.79	11.48	
Curry powder	Fish curry powder / Packed locally	50 Gram	5.77	7.10	23.12	5.75	6.77	17.71	5.79	7.44	28.49	
Curry powder	Chicken curry powder / Packed locally	50 Gram	5.68	7.14	25.76	5.75	6.92	20.28	5.61	7.36	31.39	
Dried Chilli	Dried Chilli (Hikimirus) / Loose	1 kg	58.33	88.19	51.18	60.00	92.48	54.14	56.67	83.89	48.04	
Chilli powder	Chillie Powder / Packed Locally	50 Gram	6.06	7.30	20.49	5.83	6.80	16.57	6.29	7.81	24.13	
Onion	Imported Onion	1 kg	16.69	10.03	-39.91	11.41	9.71	-14.87	21.97	10.34	-52.92	
Tea leaves-tea bag	Today's Taste / 100 tea bag	200 Gram	26.08	34.80	33.45	26.22	34.27	30.70	25.94	35.33	36.24	
Tea leaves-tea bag	Melesna / 100 tea bag	200 Gram	29.33	37.80	28.86	33.00	44.93	36.15	25.67	30.67	19.48	
Tea leaves-tea bag	Akbar / 100 tea bag	200 Gram	25.93	36.39	40.32	26.20	35.08	33.88	25.67	37.70	46.89	
Coffee	Nescafe, Cafe' soluble coffee / Canned	50 Gram	32.64	41.91	28.40	33.33	42.15	26.44	31.95	41.67	30.44	
Juice-Sun quick	Sun quick / Orange Juice / Bottled	840 MI	59.87	74.57	24.56	60.11	73.38	22.08	59.63	75.77	27.07	
Juice-Foster Clark	Foster Clark / Powdered Juice / Bottled	750 Gram	55.49	67.08	20.88	54.33	65.99	21.46	56.66	68.17	20.33	
Milo	Nestle Milo Powder / Canned	400 Gram	61.23	84.25	37.59	62.78	86.14	37.22	59.69	82.36	37.99	
Candy	Solano	1 Piece / 25 Gram	0.51	0.38	-24.62	0.64	0.32	-50.52	0.37	0.45	19.47	
Coke	Dubai coke / Canned	300 MI	7.73	10.85	40.23	7.83	11.21	43.05	7.64	10.49	37.33	
Coke	Coca Cola / Large Bottle	1500 MI	25.76	30.93	20.05	26.13	30.10	15.21	25.40	31.76	25.03	
Aracanut	Raw Aracanut / Uncut / Loose	1 kg	66.43	100.03	50.59	70.00	90.03	28.61	62.85	110.04	75.07	
Cigarette	Marlboro	20 Piece / 1 Pack	19.88	38.53	93.88	19.83	38.66	94.91	19.92	38.41	92.86	
Cigarette	Benson	20 Piece / 1 Pack	18.80	35.44	88.49	18.60	38.66	107.83	19.00	32.22	69.55	
Saltish short-eats	Handulu gulha	1 Piece	1.58	1.42	-10.53	1.50	1.17	-22.22	1.67	1.67	0.00	
Sweet short-eats	Foni folhi	1 Piece	2.06	2.35	14.49	2.00	2.37	18.67	2.11	2.33	10.53	
Jam	Tova Brand / Bottle	450 Gram	22.56	26.04	15.45	23.00	25.38	10.34	22.12	26.71	20.77	
Tomato paste	Tomato Paste / Small can	70 Gram	2.68	3.01	12.18	2.50	2.94	17.60	2.86	3.08	7.45	
Sauce	Tomato Sauce / life Brand	320 Gram / Bottled	10.93	14.05	28.55	10.71	15.07	40.66	11.14	13.03	16.90	
Sauce	Chillie Sauce / life Brand	335 Gram / Bottled	12.04	15.44	28.31	12.50	16.82	34.57	11.57	14.06	21.55	
Sauce	Chillie & Garlic Sauce / life Brand	320 Gram / Bottled	12.96	15.77	21.64	13.50	17.22	27.59	12.43	14.31	15.18	
Fish												
Canned fish in oil	Felivaru canned fish / Chunk in Oil	185 Gram	17.05	18.92	10.97	16.85	18.16	7.74	17.25	19.68	14.11	
Canned fish in brine	Felivaru Canned Fish / Chunk in Brine	185 Gram	15.47	17.42	12.66	15.78	16.95	7.45	15.15	17.90	18.09	
Smoked fish	Smoked Fish (Valhoamas) / Loose	1 kg	83.18	116.20	39.69	66.36	142.39	114.57	100.00	90.00	-10.00	
Clothing and Footwear												
Men's t-shirt	Men Shirt / Most Sold Brand	1 Piece	163.85	199.01	21.45	171.67	186.13	8.43	156.04	211.88	35.78	
Men's shirt	Men T-Shirt / Most Sold material	1 Piece	178.33	204.92	14.91	175.00	219.95	25.69	181.67	189.89	4.52	
Men's trousers	Men's Trousers / Long	1 Piece	213.13	241.52	13.32	203.33	229.60	12.92	222.92	253.44	13.69	
Men's jeans	Mend's Jeans / Most Sold Material	1 Piece	226.04	263.52	16.58	243.33	295.43	21.41	208.75	231.61	10.95	
Women's t-shirt	Ladies T - shirt / Most sold Brand	1 Piece	149.58	169.14	13.08	156.67	191.03	21.94	142.50	147.25	3.34	

Description	Specification	Unit	National - Month on Month			Male' - Month on Month			Atolls - Month on Month		
			Average Price			Average Price		% Chn	Average Price		
			Apr-11	Apr-12	% Chn	Apr-11	Apr-12		Apr-11	Apr-12	% Chn
Dress material	Most often sold material / Plane / Faatufulhaa	1 Muh	26.25	34.27	30.55	25.00	39.04	56.15	27.50	29.50	7.27
Tailoring women's blouse	Sewing of blouse	1 Piece	70.00	73.70	5.28	70.00	75.00	7.14	70.00	72.40	3.42
School shoes	School Shoes/ Girl / Most recently sold	1 Pair	155.00	188.40	21.55	145.00	188.50	30.00	165.00	188.29	14.12
Men's sandals	Most recently sold brand	1 Pair	203.13	237.81	17.08	145.00	196.83	35.75	261.25	278.80	6.72
Women's sandals	Casual (home-wear)	1 Piece	138.75	172.62	24.41	145.00	200.00	37.93	132.50	145.25	9.62
Housing											
Kerosene oil	Kerosene oil	1 Ltr	13.26	16.89	27.41	12.00	16.56	38.00	14.52	17.23	18.65
Cooking gas	Cooking gas / Excluding Transport cost	13 Kg	285.50	341.26	19.53	296.00	390.00	31.76	275.00	292.52	6.37
Cement	Cement bag	50 kg	88.67	122.50	38.16	82.50	122.00	47.88	94.83	123.00	29.70
Plywood	3 mm	1 Piece	113.04	140.33	24.14	112.75	166.82	47.95	113.33	113.83	0.44
Paint	Wall Paint	5 litre	150.50	166.66	10.74	171.00	198.53	16.10	130.00	134.80	3.69
Roofing sheet	0.6 mm / 1 feet	1 Piece	24.13	33.04	36.94	28.00	30.24	8.00	20.25	35.83	76.95
Transport											
Motorcycle	Honda Wave 125 I	1 Piece	44,625.00	56,480.33	26.57	45,000.00	57,028.00	26.73	44,250.00	55,932.67	26.40
Motorcycle	Honda Wave 125 H	1 Piece	41,250.00	51,551.33	24.97	40,500.00	50,456.00	24.58	42,000.00	52,646.67	25.35
Petrol	Petrol	1 Ltr	14.81	16.70	12.74	15.02	16.54	10.14	14.60	16.85	15.41
International airfare	Male/Colombo/male'	Per Person	4,579.68	5,157.99	12.63	4,579.68	5,157.99	12.63	-	-	-
Domestic airfare	Male/Gan/Male'	Per Person / Adult	3,206.00	3,392.00	5.80	3,206.00	3,392.00	5.80	-	-	-
Domestic airfare	Male/Hanimadhoo/Male'	Per Person / Adult	2,506.00	2,650.00	5.75	2,506.00	2,650.00	5.75	-	-	-
Domestic airfare	Male/Kade'dhoo/ Male'	Per Person / Adult	2,856.00	3,021.00	5.78	2,856.00	3,021.00	5.78	-	-	-
Domestic airfare	Male/Kah'dhoo/male'	Per Person / Adult	2,506.00	2,650.00	5.75	2,506.00	2,650.00	5.75	-	-	-
Miscellaneous											
Haircut-men	Male Hair Cut	Per Person	21.88	36.75	68.00	32.50	59.75	83.85	11.25	13.75	22.22
Baby diapers	Huggies / Small Size	1 Packet	130.21	146.99	12.89	133.33	149.52	12.14	127.08	144.47	13.68
Sanitary pads	Stay Free	1 Packet	13.92	15.40	10.61	13.80	16.28	17.97	14.04	14.52	3.38
Soap	Lux Soap	100 Gram	4.78	6.20	29.74	4.61	6.70	45.21	4.94	5.70	15.30
Baby soap	Johnson Baby Soap	100 Gram	9.01	10.14	12.53	8.57	10.68	24.59	9.45	9.60	1.60
Facial cream	Fair & Lovely / Facial Cream	25 Gram	17.71	22.53	27.22	15.67	24.03	53.41	19.75	21.02	6.45
Baby lotion	Johnson & Johnson Baby Lotion	200 MI, bottle	31.45	36.46	15.93	31.25	36.00	15.21	31.65	36.92	16.64
Body lotion	Enchantaur Lotion	200 MI	30.30	37.35	23.28	27.43	36.61	33.46	33.17	38.10	14.86
Baby cologne	Baby Cheramy Cologne	175 ml	27.81	32.03	15.18	30.00	35.84	19.47	25.63	28.23	10.15
Baby cologne	Johnson & Johnson Cologne	175 ml	21.59	24.58	13.82	19.60	22.82	16.43	23.58	26.33	11.65
Cologne	Splash	200 MI	20.54	26.33	28.18	19.50	24.55	25.89	21.58	28.11	30.26
Cologne	Loviline	175 ml	21.57	26.96	24.95	22.00	27.65	25.67	21.15	26.26	24.20
Hair cream	Max	175 ml	29.48	34.35	16.51	31.00	34.99	12.87	27.96	33.70	20.54
Hair cream	Elite	175 ml	30.50	34.63	13.53	31.00	36.57	17.96	30.00	32.69	8.96
Hair cream	Gatsby	175 ml	21.18	23.92	12.93	17.50	22.81	30.31	24.86	25.03	0.68
Hair oil	Bertolli	100 MI, bottle	29.39	27.08	-7.87	29.33	25.90	-11.70	29.44	28.25	-4.06
Shampoo	Emerone	200 MI	21.49	26.94	25.36	21.00	25.81	22.90	21.98	28.07	27.71
Shampoo	Head & shoulders	200 MI	33.17	39.14	18.02	33.63	38.69	15.06	32.71	39.60	21.06
Shampoo	Pantene Pro vitamin	200 MI	29.88	37.05	24.00	28.50	36.71	28.81	31.25	37.38	19.61
Toothpaste	Colgate	50 MI	11.79	14.74	25.04	11.33	14.36	26.68	12.25	15.13	23.53

Annex 4: National - Consumer Price Index and Inflation rates by Major categories

	Consumer Price Index - CPI (June 2004 =100)																	% change in Consumer Price Index - CPI																		
	Total	Total Excluding Fish	1. Food and beverages Including Fish	Food and beverages Excluding Fish	1.1 Fish	2. Tobacco	3. Clothing & footwear	4. Housing, water, electricity, gas & other fuels	Actual rentals for housing	5. Furnishing, household equipments & routine maintenance of	6. Health	7. Transport	8. Communication	9. Recreation & culture	10. Education	11. Hotels, cafes & restaurants	12. Miscellaneous goods & services	13. Religious activity	Total	Total Excluding Fish	Food and beverages Including Fish	Food and beverages Excluding Fish	Fish	Tobacco	Clothing & footwear	Housing, water, electricity, gas & other fuels	Actual rentals for housing	Furnishing, household equipments & routine maintenance of	Health	Transport	Communication	Recreation & culture	Education	Hotels, cafes & restaurants	Miscellaneous goods & services	Religious activity
Weights	100.00	95.44	33.31	28.75	4.56	2.76	5.96	19.48	7.17	5.30	5.42	5.07	5.83	4.94	3.15	0.77	7.92	0.11	100.00	95.44	33.31	28.75	4.56	2.76	5.96	19.48	7.17	5.30	5.42	5.07	5.83	4.94	3.15	0.77	7.92	0.11
2009	132.09	132.12	150.02	152.96	131.51	115.29	112.23	136.55	143.81	134.97	142.90	149.46	65.87	93.99	135.05	141.33	116.65	100.00	3.98	4.98	1.48	3.90	-13.35	-2.09	2.98	7.57	14.29	9.64	2.54	0.47	-0.46	3.52	23.75	2.57	5.99	0.00
2010	140.82	140.83	157.86	160.72	140.70	113.54	114.77	145.73	153.04	143.62	155.76	154.82	65.96	98.73	144.74	145.89	122.48	100.00	6.61	6.59	5.23	5.07	6.98	-1.51	2.26	6.72	6.42	6.41	9.00	3.59	0.14	5.04	7.18	3.23	5.00	0.00
2011	158.89	155.02	188.81	180.70	239.89	145.24	128.41	150.45	161.11	157.15	170.00	175.52	65.98	101.09	167.19	168.68	133.03	100.00	12.83	10.08	19.60	12.43	70.50	27.91	11.89	3.24	5.27	9.42	9.15	13.37	0.02	2.39	15.51	15.62	8.61	0.00
May 2010 to April 2011	143.93	143.34	163.43	164.56	156.31	115.30	115.98	147.69	155.65	146.44	158.31	157.86	65.96	99.91	153.06	147.34	123.85	100.00	16.53	12.10	25.57	14.14	101.38	56.96	17.61	2.50	4.25	14.14	9.68	17.52	-0.14	0.79	14.25	27.45	14.10	0.00
May 2011 to April 2012	167.72	160.69	205.22	187.83	314.78	180.97	136.40	151.39	162.26	167.15	173.63	185.52	65.87	100.69	174.86	187.78	141.31	100.00																		
April 2012 / April 2011																			14.87	10.42	22.13	10.84	74.95	81.16	16.59	4.32	5.20	20.13	5.81	13.19	-0.48	0.37	13.77	31.57	17.17	0.00
2011 Apr	151.28	147.58	177.85	169.78	228.68	121.53	123.51	148.37	158.74	150.65	164.37	170.88	65.96	99.85	167.19	158.03	128.40	100.00	3.88	1.64	8.17	2.31	47.74	1.61	4.86	0.26	0.17	-1.15	0.55	7.02	0.00	-2.47	0.00	8.45	2.49	0.00
May	156.49	151.54	188.44	177.08	260.04	129.35	126.35	149.69	158.95	152.86	171.15	178.02	66.36	99.98	167.19	162.51	129.21	100.00	3.44	2.68	5.96	4.30	13.71	6.44	2.29	0.89	0.13	1.47	4.13	4.18	0.60	0.13	0.00	2.83	0.63	0.00
June	159.06	153.30	192.22	178.36	279.58	141.23	128.98	150.04	159.34	153.27	170.66	178.30	66.36	100.08	167.19	166.11	131.64	100.00	1.64	1.16	2.01	0.73	7.51	9.18	2.08	0.23	0.25	0.26	-0.29	0.16	0.00	0.10	0.00	2.22	1.88	0.00
July	162.93	156.05	198.73	181.56	306.97	143.93	130.06	148.38	159.46	152.69	169.64	178.30	66.15	99.61	167.19	166.11	131.62	100.00	2.43	1.79	3.39	1.79	9.80	1.92	0.84	-1.11	0.08	-0.38	-0.60	0.00	-0.32	-0.47	0.00	0.00	-0.02	0.00
Aug	163.27	158.65	197.71	187.83	259.96	146.06	131.30	149.32	160.08	155.45	169.61	179.54	66.09	99.82	167.19	166.11	134.10	100.00	0.21	1.67	-0.52	3.45	-15.31	1.48	0.95	0.63	0.39	1.81	-0.02	0.70	-0.09	0.22	0.00	0.00	1.88	0.00
Sep	165.74	160.45	200.99	189.03	276.37	155.21	133.60	149.63	160.48	158.75	177.07	179.94	66.09	100.81	167.19	179.50	136.82	100.00	1.51	1.13	1.66	0.64	6.31	6.26	1.75	0.21	0.25	2.13	4.40	0.22	0.00	0.99	0.00	8.07	2.03	0.00
October	165.55	163.15	194.05	190.59	215.82	164.52	139.92	150.16	161.65	168.65	177.21	187.63	65.61	102.63	167.19	186.97	142.08	100.00	-0.11	1.68	-3.45	0.83	-21.91	6.00	4.73	0.35	0.73	6.23	0.08	4.27	-0.72	1.80	0.00	4.16	3.84	0.00
Nov	171.90	164.97	210.17	193.25	316.80	162.25	138.69	152.66	162.76	172.51	177.86	188.37	65.61	102.81	167.19	200.81	144.48	100.00	3.83	1.12	8.31	1.40	46.79	-1.38	-0.87	1.67	0.69	2.29	0.37	0.39	0.00	0.18	0.00	7.40	1.69	0.00
Dec	173.53	167.69	210.13	196.53	295.81	224.88	137.90	152.89	163.04	172.00	177.74	189.25	65.61	102.03	167.19	200.81	144.70	100.00	0.95	1.65	-0.02	1.69	-6.63	38.60	-0.57	0.15	0.17	-0.30	-0.07	0.47	0.00	-0.76	0.00	0.00	0.16	0.00
2012 Jan	173.40	163.18	219.06	192.38	387.21	228.71	141.53	153.04	164.20	177.74	172.37	190.86	65.61	99.90	190.21	203.24	147.93	100.00	-0.08	-2.69	4.25	-2.11	30.90	1.70	2.63	0.10	0.71	3.34	-3.02	0.85	0.00	-2.09	13.77	1.21	2.23	0.00
Feb	172.93	163.17	216.04	190.50	377.02	232.05	141.53	153.04	164.79	179.71	172.44	189.33	65.61	100.15	190.21	205.40	151.09	100.00	-0.27	-0.01	-1.38	-0.97	-2.63	1.46	0.00	0.00	0.36	1.11	0.04	-0.80	0.00	0.24	0.00	1.06	2.14	0.00
Mar	174.01	163.13	217.85	188.68	401.67	223.30	143.00	153.04	165.38	181.17	173.92	193.24	65.65	100.28	190.21	207.90	151.67	100.00	0.63	-0.03	0.84	-0.95	6.54	-3.77	1.04	0.00	0.36	0.81	0.86	2.07	0.05	0.13	0.00	1.22	0.38	0.00
Apr	173.78	162.96	217.21	188.19	400.07	220.16	144.00	154.78	167.00	180.98	173.93	193.42	65.65	100.22	190.21	207.92	150.44	100.00	-0.13	-0.10	-0.30	-0.26	-0.40	-1.41	0.70	1.14	0.98	-0.11	0.01	0.09	0.00	-0.06	0.00	0.01	-0.81	0.00

Annex 5: Male' - Consumer Price Index and Inflation rates by Major categories

	Consumer Price Index - CPI (June 2004 =100)																		% change in CPI / Inflation Rate																	
	Total	Total Excluding Fish	1. Food and beverages Including Fish	Food and beverages Excluding Fish	1.1 Fish	2. Tobacco	3. Clothing & footwear	4. Housing, water, electricity, gas & other fuels	Actual rentals for housing	5. Furnishing, household equipments & routine maintenance of	6. Health	7. Transport	8. Communication	9. Recreation & culture	10. Education	11. Hotels, cafes & restaurants	12. Miscellaneous goods & services	13. Religious activity	Total	Total Excluding Fish	Food and beverages Including Fish	Food and beverages Excluding Fish	Fish	Tobacco	Clothing & footwear	Housing, water, electricity, gas & other fuels	Actual rentals for housing	Furnishing, household equipments & routine maintenance of	Health	Transport	Communication	Recreation & culture	Education	Hotels, cafes & restaurants	Miscellaneous goods & services	Religious activity
Weights	48.90	46.48	13.39	10.97	2.42	0.93	2.45	12.30	7.17	2.85	2.76	2.92	3.84	2.10	1.51	0.77	2.96	0.11	48.90	46.48	13.39	10.97	2.42	0.93	2.45	12.30	7.17	2.85	2.76	2.92	3.84	2.10	1.51	0.77	2.96	0.11
2009	130.21	130.13	151.57	155.95	131.68	111.35	109.30	131.18	143.81	129.43	151.16	153.56	61.32	88.34	150.19	141.33	118.07	100.00	4.53	5.48	0.52	2.93	-10.70	-1.80	3.21	7.82	14.29	10.94	2.25	0.98	-0.75	5.01	35.09	2.57	7.10	0.00
2010	138.21	138.02	162.90	167.54	141.88	110.98	112.54	141.13	153.04	137.17	158.21	158.66	61.46	93.41	164.38	145.89	123.88	100.00	6.15	6.07	7.48	7.43	7.74	-0.33	2.96	7.59	6.42	5.98	4.66	3.32	0.23	5.74	9.44	3.23	4.93	0.00
2011	153.79	150.03	195.36	188.60	226.03	141.21	127.04	145.24	159.87	142.94	174.92	180.47	61.61	91.43	194.52	168.68	133.07	100.00	11.27	8.70	19.93	12.57	59.31	27.24	12.89	2.91	4.46	4.20	10.56	13.74	0.24	-2.13	18.34	15.62	7.42	0.00
May 2010 to April 2011	141.45	140.71	169.98	173.16	155.57	112.67	113.52	142.93	155.65	137.87	160.88	161.44	61.46	93.61	175.78	147.34	124.26	100.00	15.05	11.12	24.61	12.97	83.36	58.90	21.02	2.53	4.25	10.40	13.85	17.98	0.09	-2.36	16.79	27.45	15.61	0.00
May 2011 to April 2012	162.74	156.36	211.80	195.61	285.26	179.03	137.38	146.55	162.26	152.21	183.17	190.47	61.52	91.39	205.29	187.78	143.66	100.00																		
April 2012 / April 2011																																				
2011 Apr	149.19	145.48	188.04	180.89	220.43	119.55	120.58	144.78	158.74	135.96	167.67	173.09	61.46	90.46	194.52	158.03	128.60	100.00	4.42	2.28	10.65	4.44	42.07	3.90	3.64	0.14	0.17	-2.01	1.21	6.65	0.00	-3.79	0.00	8.45	5.05	0.00
May	154.13	149.71	198.54	189.59	239.10	125.87	123.69	146.74	158.95	136.43	178.16	183.27	62.07	90.45	194.52	162.51	127.85	100.00	3.31	2.91	5.59	4.81	8.47	5.29	2.58	1.35	0.13	0.35	6.25	5.88	0.98	-0.02	0.00	2.83	-0.58	0.00
June	155.53	150.22	200.21	187.57	257.53	138.69	124.62	146.97	159.34	140.21	178.58	183.61	62.07	90.85	194.52	166.11	132.07	100.00	0.91	0.34	0.84	-1.07	7.71	10.19	0.75	0.16	0.25	2.77	0.24	0.19	0.00	0.45	0.00	2.22	3.30	0.00
July	155.63	149.23	204.98	188.64	278.54	139.34	125.94	143.41	159.46	140.95	172.95	183.61	61.99	87.83	194.52	166.11	132.76	100.00	0.06	-0.66	2.33	0.57	8.16	0.47	1.06	-2.42	0.08	0.53	-3.15	0.00	-0.13	-3.33	0.00	0.00	0.52	0.00
Aug	156.12	150.96	204.53	193.35	255.24	137.71	127.66	144.60	160.08	141.40	172.95	184.90	61.90	87.83	194.52	166.11	135.00	100.00	0.32	1.16	-0.17	2.50	-8.37	-1.18	1.36	0.83	0.39	0.31	0.00	0.71	-0.14	0.01	0.00	0.00	1.69	0.00
Sep	158.15	153.01	206.34	195.20	256.84	143.21	131.88	144.90	160.48	142.60	183.63	185.75	61.90	89.25	194.52	179.50	137.52	100.00	1.30	1.36	0.88	0.96	0.63	4.00	3.31	0.21	0.25	0.85	6.17	0.46	0.00	1.61	0.00	8.07	1.86	0.00
Oct	158.67	156.20	199.64	198.21	206.14	150.56	142.24	145.15	161.65	152.89	183.89	193.64	61.18	92.44	194.52	186.97	143.33	100.00	0.33	2.09	-3.25	1.54	-19.74	5.13	7.85	0.18	0.73	7.22	0.14	4.25	-1.17	3.58	0.00	4.16	4.23	0.00
Nov	164.11	157.80	215.54	200.14	285.37	152.48	142.06	146.62	162.76	156.06	184.90	194.86	61.18	92.55	194.52	200.81	145.75	100.00	3.42	1.02	7.96	0.98	38.44	1.28	-0.13	1.01	0.69	2.07	0.55	0.63	0.00	0.11	0.00	7.40	1.69	0.00
Dec	166.04	160.60	216.41	204.47	270.58	241.17	140.25	146.80	163.04	154.80	184.90	196.50	61.18	92.58	194.52	200.81	146.04	100.00	1.18	1.77	0.40	2.16	-5.18	58.16	-1.27	0.12	0.17	-0.80	0.00	0.84	0.00	0.03	0.00	0.00	0.20	0.00
2012 Jan	170.86	161.93	225.81	200.10	342.43	236.92	145.11	147.05	164.20	161.18	188.14	195.83	61.18	93.24	226.83	203.24	153.35	100.00	2.90	0.83	4.34	-2.14	26.55	-1.76	3.46	0.17	0.71	4.12	1.75	-0.34	0.00	0.72	16.62	1.21	5.00	0.00
Feb	170.35	161.88	221.89	197.37	333.14	237.24	146.76	147.73	164.79	164.91	188.28	192.88	61.18	93.09	226.83	205.40	157.09	100.00	-0.30	-0.03	-1.73	-1.37	-2.71	0.13	1.14	0.47	0.36	2.31	0.07	-1.51	0.00	-0.16	0.00	1.06	2.44	0.00
Mar	171.69	162.36	224.58	196.73	350.93	224.77	148.41	148.85	165.38	167.58	190.82	195.05	61.23	93.30	226.83	207.90	157.04	100.00	0.79	0.30	1.21	-0.32	5.34	-5.26	1.12	0.76	0.36	1.62	1.35	1.13	0.09	0.23	0.00	1.22	-0.03	0.00
Apr	171.54	162.39	223.22	195.87	347.30	220.43	149.96	149.82	167.00	167.49	190.82	195.71	61.23	93.32	226.83	207.92	156.13	100.00	-0.09	0.02	-0.61	-0.44	-1.03	-1.93	1.05	0.65	0.98	-0.05	0.00	0.34	0.00	0.03	0.00	0.01	-0.58	0.00

Annex 6: Atolls - Consumer Price Index and Inflation rates by Major categories

		Consumer Price Index - CPI (June 2004 =100)															% change in Consumer Price Index - CPI															
		Total	Total Excluding Fish	1. Food and beverages Including Fish	Food and beverages Excluding Fish	1.1 Fish	2. Tobacco	3. Clothing & footwear	4. Housing, water, electricity, gas & other fuels	5. Furnishing, household equipments & routine maintenance of	6. Health	7. Transport	8. Communication	9. Recreation & culture	10. Education	12. Miscellaneous goods & services	Total	Total Excluding Fish	Food and beverages Including Fish	Food and beverages Excluding Fish	Fish	of Tobacco	Clothing & footwear	Housing, water, electricity, gas & other fuels	Furnishing, household equipments & routine maintenance of	Health	Transport	Communication	Recreation & culture	Education	Miscellaneous goods & services	
	Weights	51.10	48.96	19.92	17.78	2.14	1.83	3.51	7.18	2.44	2.66	2.14	1.98	2.83	1.63	4.96	51.10	48.96	19.92	17.78	2.14	1.83	3.51	7.18	2.44	2.66	2.14	1.98	2.83	1.63	4.96	
	2009	133.89	134.01	148.86	150.97	131.32	117.30	117.21	146.13	143.16	128.84	144.50	74.67	91.70	115.96	115.54	3.48	4.53	2.13	4.52	-16.16	-2.22	5.33	6.89	8.20	3.31	0.33	0.00	-4.51	8.10	5.21	
	2010	143.32	143.49	155.11	157.01	139.36	114.76	118.44	154.61	148.89	169.27	150.19	74.67	93.20	119.92	121.37	7.04	7.08	4.20	4.00	6.12	-2.17	1.04	5.81	4.00	31.38	3.94	0.00	1.63	3.41	5.04	
	2011	163.76	159.75	185.08	176.60	255.38	147.29	129.68	157.31	160.91	184.97	170.41	74.44	97.92	122.96	132.49	14.27	11.33	19.32	12.48	83.25	28.35	9.49	1.74	8.07	9.27	13.47	-0.31	5.07	2.54	9.16	
	May 2010 to April 2011	146.30	145.83	159.67	160.00	156.99	116.64	119.31	156.92	152.08	172.36	154.40	74.67	94.27	120.94	123.33	17.90	13.00	26.21	14.92	121.73	56.01	14.19	1.57	10.11	-0.61	16.28	-0.52	4.23	1.68	12.89	
	May 2011 to April 2012	172.48	164.79	201.53	183.86	348.09	181.96	136.24	159.38	167.45	171.31	179.54	74.28	98.25	122.96	139.22																
	April 2012 / April 2011																14.77	9.25	24.64	12.49	94.65	79.55	16.11	5.28	15.56	-23.10	11.15	-0.63	-0.08	0.00	14.25	
	2011 Apr	153.28	149.65	171.73	163.96	236.14	122.54	120.93	154.41	152.18	177.88	171.29	74.67	97.64	122.96	128.00	3.38	1.11	6.26	0.91	52.97	0.50	0.54	0.47	0.46	-0.19	7.90	0.00	0.24	0.00	0.88	
	May	158.74	153.27	182.14	169.90	283.69	131.13	124.89	154.21	152.81	177.88	171.84	74.67	97.99	122.96	129.78	3.56	2.42	6.07	3.62	20.13	7.01	3.27	-0.13	0.41	0.00	0.32	0.00	0.36	0.00	1.40	
	June	162.43	156.21	187.32	173.20	304.46	142.52	133.37	154.75	158.79	177.54	172.04	74.67	97.75	122.96	130.78	2.32	1.92	2.84	1.94	7.32	8.69	6.79	0.35	3.92	-0.19	0.12	0.00	-0.25	0.00	0.77	
	July	169.92	162.52	195.28	177.95	339.06	146.28	133.61	156.36	158.02	191.37	172.04	74.20	97.62	122.96	130.37	4.61	4.03	4.25	2.74	11.37	2.64	0.18	1.04	-0.49	7.79	0.00	-0.63	-0.13	0.00	-0.32	
	Aug	170.12	165.95	194.01	185.41	265.29	150.34	134.50	156.89	161.31	191.30	173.22	74.20	98.05	122.96	132.82	0.11	2.11	-0.65	4.19	-21.76	2.77	0.66	0.34	2.08	-0.04	0.69	0.00	0.44	0.00	1.88	
	Sep	173.00	167.51	198.43	186.38	298.42	161.34	135.75	157.22	165.51	192.59	172.99	74.20	98.97	122.96	135.77	1.69	0.94	2.28	0.52	12.49	7.32	0.93	0.21	2.60	0.67	-0.14	0.00	0.94	0.00	2.23	
	Oct	172.14	169.75	191.18	186.89	226.74	171.66	139.06	158.16	167.25	192.64	180.36	74.20	99.93	122.96	140.58	-0.50	1.34	-3.65	0.28	-24.02	6.40	2.44	0.60	1.05	0.02	4.26	0.00	0.97	0.00	3.54	
	Nov	179.36	171.79	207.27	189.79	352.28	167.25	137.14	162.59	170.28	193.04	180.50	74.20	100.09	122.96	142.95	4.19	1.20	8.41	1.55	55.36	-2.57	-1.38	2.80	1.81	0.21	0.08	0.00	0.16	0.00	1.69	
	Dec	180.70	174.41	206.56	192.37	324.29	216.56	136.89	162.93	171.21	192.80	180.50	74.20	98.66	122.96	143.05	0.75	1.53	-0.34	1.36	-7.94	29.48	-0.18	0.21	0.55	-0.12	0.00	0.00	-1.43	0.00	0.07	
	2012 Jan	175.84	164.38	215.08	188.23	437.76	224.52	139.71	162.75	175.71	136.51	184.82	74.20	97.05	122.96	143.90	-2.69	-5.75	4.12	-2.15	34.99	3.68	2.06	-0.11	2.63	-29.20	2.39	0.00	-1.63	0.00	0.59	
	Feb	175.39	164.40	212.98	187.23	426.54	229.40	139.99	161.49	176.41	136.52	184.93	74.20	97.62	122.96	146.73	-0.25	0.02	-0.98	-0.53	-2.56	2.17	0.20	-0.77	0.40	0.01	0.06	0.00	0.59	0.00	1.97	
	Mar	176.23	163.85	214.04	184.52	458.95	222.55	139.57	162.65	176.25	136.76	190.85	74.20	97.75	122.96	147.69	0.48	-0.33	0.50	-1.45	7.60	-2.98	-0.30	0.72	-0.09	0.17	3.20	0.00	0.13	0.00	0.65	
	Apr	175.92	163.50	214.04	184.44	459.65	220.02	140.40	162.57	175.86	136.78	190.38	74.20	97.56	122.96	146.23	-0.18	-0.22	0.00	-0.04	0.15	-1.14	0.59	-0.05	-0.22	0.01	-0.25	0.00	-0.19	0.00	-0.99	