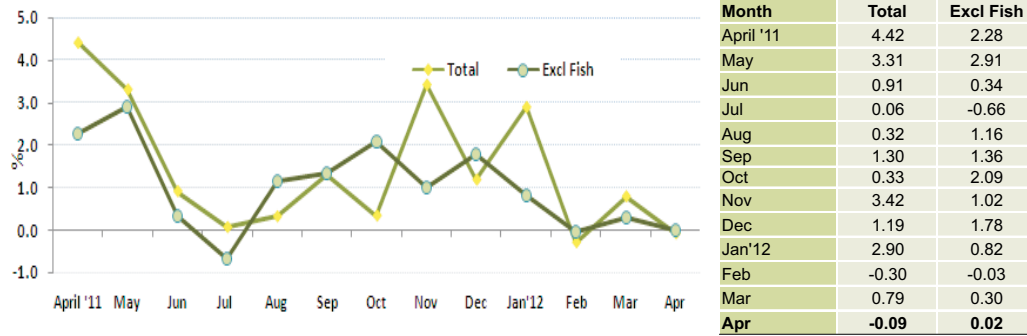


1. Inflation Rate of Male' (Monthly): April 2012 compared to March 2012

To measure month to month inflation, this month's index is compared with the previous month inflation (for e.g: April '12 /March '12). The monthly inflation for April 2012 is -0.09% and 0.02% is the total excluding fish.

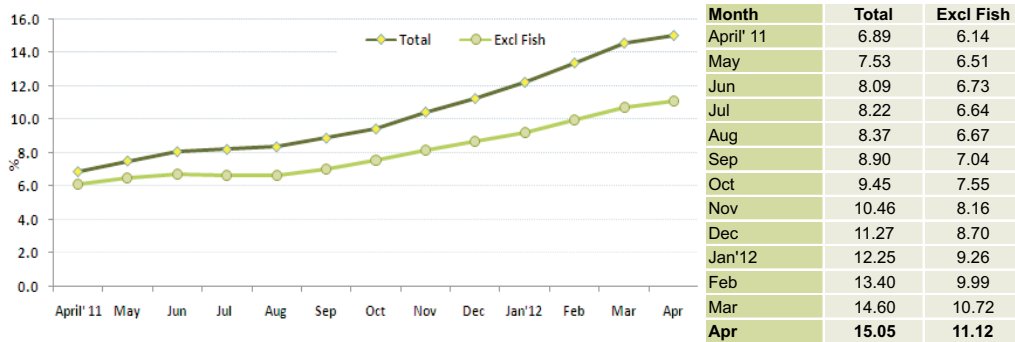
Figure 7. Monthly Inflation Rate of Male', (compared to the previous month)



2. Inflation Rate of Male' (Annualized): May '11 to April '12 /May '10 to April '11

The annualized inflation rate for any month compares the average for the 12 monthly indices with that of the preceding 12 months (Eg: May '11 to April '12 /May'10 to April '11). This index shows an annual inflation of 15.05%, and the annualized total excluding fish is 11.12%.

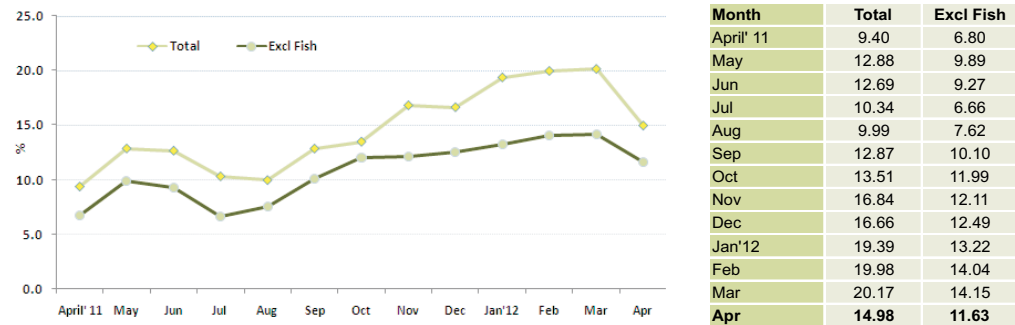
Figure 8. Annualized Inflation Rate of Male' (compared to the past 12 month period)



3. Inflation Rate of Male' (month on month): April'12/ April'11

To measure the month on month change at one point in time, the index of the month is compared with that of the same month in the preceding year (Eg: April '12 /April '11). The month on month index for April shows an inflation of 14.98% and the inflation excluding fish is 11.63%.

Figure 9. Month on Month inflation Rate of Male' (compared to the same month of the previous year)



CONSUMER PRICE INDEX - MALE'

Department of National Planning
Ministry of Finance and Treasury

April 2012

Consumer Price Index-Male' April 2012

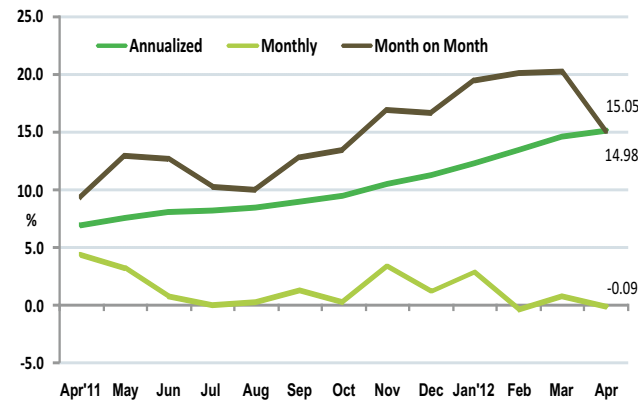
Inflation Rate of Male'

The Consumer Price Index (CPI) for Male' rose at an annualized rate of 15.05 percent in April 2012. The inflation was driven mainly by fish, food & beverages and transport categories.

Monthly CPI of April 2012 decreased by -0.09 percent compared to March 2012. The deflation was mainly driven from food & beverage followed by fish and tobacco categories.

When April 2012 is compared to April 2011, the consumer price index increased by 14.98 percent. Tobacco category showed the highest inflation followed by fish and hotel, cafes & restaurants categories.

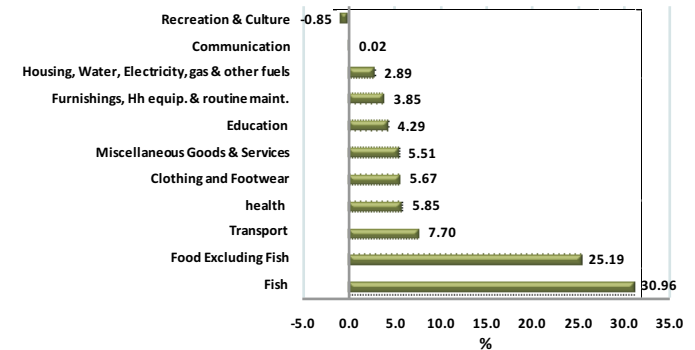
Figure 1: Inflation rates of Male', April-2012



Month	Annualized	Monthly	Month on Month
April	6.89	4.42	9.40
May	7.53	3.31	12.88
Jun	8.09	0.91	12.69
Jul	8.22	0.06	10.34
Aug	8.37	0.32	9.99
Sep	8.90	1.30	12.87
Oct	9.45	0.33	13.51
Nov	10.46	3.42	16.84
Dec	11.27	1.19	16.66
Jan'12	12.25	2.90	19.39
Feb	13.40	-0.30	19.98
Mar	14.60	0.79	20.17
Apr	15.05	-0.09	14.98

Sources of changes in CPI - Annualized

Figure 2: Sources of changes in April CPI - Annualized



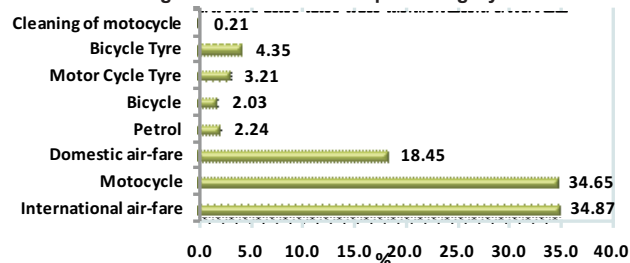
Major contributors to the change in the CPI - Annualized basis

The largest upward contribution to the change in the annual CPI came from fish which contributed 31%. Among this category, other tuna and skipjack tuna increased significantly by 207% and 124% respectively during this period. Smoked fish and reef fish prices went up by 100% and 79% respectively. Additionally dried fish chips and canned tuna prices went up by 29% and 19% respectively.

The second largest upward contribution to the change in annual CPI came food & beverages category which contributed 25%. Dried chilli prices went up by 52%. Milo prices went up by 48% while coca-cola, frozen chicken and canned pineapple prices went up by 45% to 42% to 41% respectively. Other items in this category which showed a price increase above 30% were apollo, chicken drumsticks, cooking oil, tea bags, milk powder, cream cracker biscuits, dairy milk, frozen beef, condensed milk, chilli sauce, watermelon and curry powder. Items which registered a price increase between 25% and 30% were coffee, chilli & garlic sauce, marie biscuits, chicken sausage, chilli powder, nestum, margarine and baby milk powder. In addition to this, aracanut prices went up by 99%, and cigarette price by 59%. On the other hand, garlic and ginger prices decreased by 31% and 27% respectively. Mango and green chilli prices decreased by 26% and 25% respectively. Addition to this, onion prices decreased by 23% while githeyo mirus (local chilli) and coconut prices also decreased by 18% and 12% respectively.

The third largest upward contribution to the change in the annualized CPI came from transport category by 8%. International airfare prices contributed highest to inflation of this category with 35%, while international airfare prices increased by 31%. Motorcycle prices also contributed 35% to inflation of this category. Domestic airfare contributed 18%, while domestic airfare prices rose by 18%. Additionally petrol price contributed 2% to inflation of this category, while petrol prices increased by 39%.

Figure 3: Products contributing to the inflation: Transport category - Annualized



Change in the CPI - Month on Month

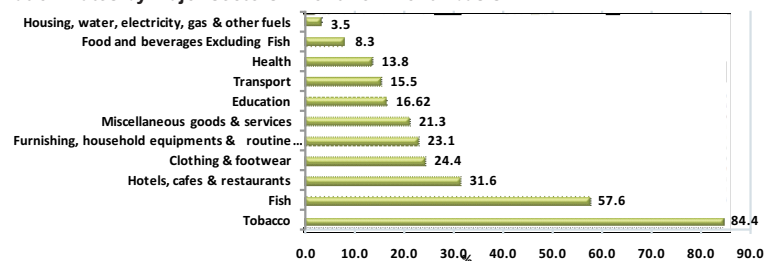
When April 2012 was compared to April 2011 all the major categories recorded an inflation. Tobacco showed the highest inflation with 84% followed by fish at 58%. The third highest category was hotels, cafes & restaurants which registered 32%.

As for tobacco category, on average cigarette prices increased by 101% when compared to April 2011. This is due to the increase in import duties on these products on 1 December 2011. Additionally aracanut prices went up by 29% when the two point of time were compared.

As for fish, other tuna and smoked fish prices increased significantly by 290% and 115% respectively. Additionally skipjack tuna and dried fish chips prices went up by 98% and 19% respectively compared to April 2011. Canned tuna also contributed to this hike.

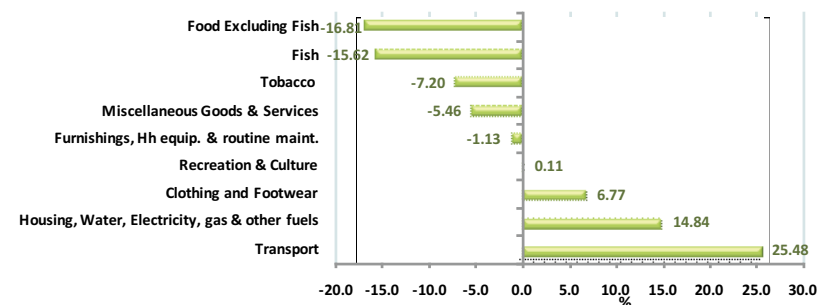
As for hotels, cafes & restaurants category, on an average breakfast meals prices went up by 41%. Additionally pizza prices

Figure 4: Inflation Rates by Major sectors - Month on Month basis



Main contributions to the change in the CPI - Monthly basis

Figure 5: Sources of changes in April 2012 CPI - monthly



Food & beverages pulled down the monthly inflation by 17%, where as transport category pulled up the overall monthly inflation by 25%.

Fish and tobacco categories also contributed 16% and 7% respectively to pulled down the monthly inflation. While housing, water, electricity, gas & other fuels and clothing & footwear pulled up the overall monthly inflation by 15% and 7% respectively.

In transport category, petrol prices increased by 6% while motorcycle prices increased by 2%. Domestic airfare also contributed to this hike.

As for housing, water, electricity, gas & other fuels category, cement prices went up by 16% compared to March 2012. Additionally plywood and electricity charges also contributed to this hike.

In the clothing & footwear category, mens shoes, trousers, sandals and t-shirt registered a price increase in April.

As for tobacco category, aracanut prices decreased by 3% compared to March. Additionally cigarette prices decreased by 2% in April compared to March.

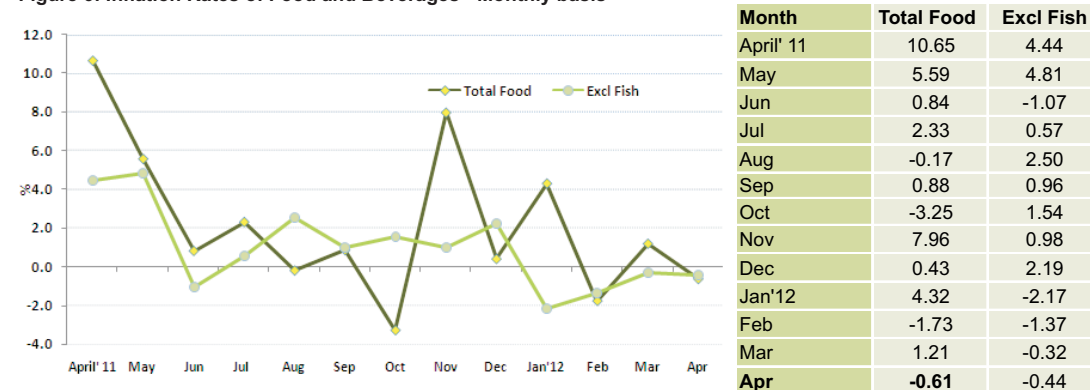
Monthly inflation rate of food and beverages category

The monthly inflation rate for the food & beverages category is -0.61%. Food excluding fish category showed an inflation of -0.44%

As for food category, garlic and banana prices decreased by 9% and 8% respectively in April compared to last month. Additionally both frozen chicken and chicken drumstick prices decreased by 7%. Mixed fresh vegetable, carrot, chicken sausage, fresh tomato, potato, dried chilli, green chilli and ginger prices declined in April. While this decrease were the major factors in decline in the food excluding fish index. However, item such as cucumber, cabbage, lemon, coconut and orange registered a significant high price during the month.

The items which contributed to the deflation in the fish category were reef fish, other tuna and smoked fish which showed a price decrease of 32%, 6% and 4% respectively.

Figure 6: Inflation Rates of Food and Beverages - Monthly basis



Annex 1: Average Prices of Items which showed a significant change, CPI Male', April 2012

Description	Specification	Unit	Annualized			Monthly		Month on Month		
			Average 12 monthly Price			Average Price		% Chn	Av Price	% Chn
			May2010- April2011	May 2011- April2012	% Chn	Mar-12	April2012	Mar2011 / April 2012	April 2011	April 2012
Food										
Biscuits	Cream Cracker, Khong Guan	200 gram, packet	9.20	12.33	34.01	13.37	13.37	0.00	11.00	21.55
Biscuits	Marie Biscuit	400 Gram	15.77	20.24	28.33	22.19	21.89	-1.33	15.89	37.79
Bread	Small Bread	1 Piece	10.37	12.41	19.65	12.54	12.54	0.00	11.89	5.44
Bread	Large	1 Piece	20.44	23.25	13.75	23.18	23.34	0.69	22.80	2.37
Bread spread	Chocolate Crimpy	225 Gram	36.59	38.16	4.29	42.83	42.52	-0.74	36.56	16.31
Butter bun	butter buns / Packed	1 Piece	3.54	4.06	14.67	4.12	4.16	1.05	3.75	10.89
Bun	Small Buns/ Un packed	1 Piece	0.46	0.56	22.92	0.54	0.54	0.00	0.46	18.58
Rice-Basmati	Basmati Rice / Pre Packed	1 kg	26.58	26.07	-1.90	27.87	28.28	1.48	24.88	13.69
Rice	Ordinary Rice / loose	1 kg	4.71	4.51	-4.39	4.58	4.57	-0.31	4.62	-1.08
Flour	Ordinary Flour / loose	1 kg	3.96	3.59	-9.42	3.70	3.70	0.00	3.52	5.39
Noodles	Mamee Noodles / Packet	85 Gram	3.50	4.15	18.33	4.15	4.14	-0.45	3.70	11.76
Corn flake	Kellogg's / Wheat and Honey	300 Gram	42.99	42.39	-1.39	44.01	44.64	1.44	41.00	8.88
Chicken sausage	Chicken Sausage / Packed	340 Gram	16.76	21.50	28.25	21.71	20.52	-5.44	20.71	-0.92
Chicken drumsticks	Chicken drumstick	1 kg	51.47	71.62	39.17	74.36	69.10	-7.09	53.56	29.02
Frozen chicken	Frozen chicken / Whole chicken / Pre p	1 kg	38.27	54.48	42.36	56.93	52.79	-7.26	41.00	28.76
Egg	Chicken egg / Imported	1 Piece	1.50	1.74	16.42	1.56	1.52	-2.57	1.50	1.00
Frozen beef	Frozen Beef	1 kg	48.71	65.05	33.54	71.61	69.51	-2.93	50.63	37.30
Baby food - cereal	Nestum / Wheat & Honey	250 Gram / Tin	37.00	47.14	27.41	48.08	50.82	5.70	40.10	26.73
Baby food - cereal	Promina / Banana	250 Gram / Packet	16.85	19.46	15.49	20.61	20.61	0.00	17.00	21.26
Baby food - fruit	Purity / Fruit / Second food	200ml, Bottle	20.87	24.39	16.90	26.41	26.41	0.00	24.00	10.06
Baby milk powder	Lactogen	450 Gram, tin	64.88	71.62	10.38	73.99	73.41	-0.78	62.50	17.46
Baby milk powder	Aniface	450 Gram / Tin	130.90	166.35	27.08	174.61	169.83	-2.74	135.40	25.43
Baby milk powder	S.M.A / Progress	450 Gram / Tin	110.32	121.41	10.05	122.83	122.83	0.00	106.25	15.60
Milk powder	Coast	1800 Gram, tin	201.40	250.70	24.48	255.98	247.58	-3.28	221.38	11.84
Milk powder	Anchor Milk	1800 Gram / tin	205.53	269.66	31.20	276.24	276.24	0.00	229.71	20.26
Milk powder	Nido	1800 Gram / Tin	193.31	264.00	36.57	269.36	264.89	-1.66	200.00	32.45
Condensed milk	Double Peach	397Gram, tin	11.55	14.72	27.50	14.94	15.27	2.21	12.15	25.64
Condensed milk	Cow Bell	397 Gram / Tin	10.84	14.47	33.48	14.98	14.72	-1.71	11.43	28.81
Dairy milk	Dutch Lady / Milk Pack / Small	250 ml	7.07	9.44	33.55	9.93	9.70	-2.28	7.50	29.32
Margarine	Daisy brand tub / Small	250 Gram	20.02	25.47	27.23	28.01	27.01	-3.59	23.30	15.91
Cooking oil	Bemoli Oil	2 Ltr	47.35	65.43	38.18	60.75	58.87	-3.10	62.14	-5.27
Cooking oil	Sun Flower Oil	2 Ltr	73.61	101.26	37.55	106.74	102.08	-4.37	80.67	26.54
Apple	Apple	1 Piece	5.02	5.30	5.71	5.52	5.54	0.40	5.20	6.57
Banana	Bonthiraiy	1 Piece	2.17	2.17	-0.05	2.39	2.19	-8.45	1.94	13.00
Orange	Fresh Orange	1 Piece	3.73	3.92	5.06	3.32	3.58	7.89	4.56	-21.48
Watermelon	Water melon (fresh Locally produced)	1 kg	15.53	20.28	30.57	23.11	22.97	-0.60	16.50	39.21
Canned mixed fruits	Canned Mixed Fruit / Small	398 Gram	25.39	29.89	17.70	28.20	28.20	0.00	27.33	3.17
Canned pineapple	Canned Pineapple	567 Gram	15.16	21.31	40.59	22.85	22.64	-0.90	15.43	46.74
Coconut	Medium size / Coconut	1 Piece	6.36	5.60	-11.88	4.01	4.43	10.54	7.48	-40.80
lemon	Imported lemon	1 Piece	1.86	2.09	12.16	2.02	2.39	17.90	1.94	23.16
Green chili	Green Chili / Imported	100 Gram	9.69	7.31	-24.59	7.08	6.80	-3.97	9.50	-28.47
Githeyo Mirus	Dhivehi mirus	1 Piece	3.37	2.76	-18.27	2.53	2.70	6.76	2.33	15.62
Mixed fresh vegetables	Mixed Vegetables	1 kg	42.43	41.68	-1.78	43.69	40.76	-6.71	50.00	-18.48
Tomato	Fresh Tomato	1kg	30.55	33.31	9.02	30.75	29.40	-4.38	29.89	-1.62
Cucumber	Fresh Cucumber	1 kg	29.76	29.68	-0.27	25.02	33.41	33.54	25.40	31.55
Carrot	Fresh Carrot	1 kg	25.84	29.50	14.17	28.08	26.54	-5.48	25.56	3.85
Cabbage	Fresh Cabbage	1 kg	28.15	29.73	5.60	23.77	29.33	23.37	22.20	32.10
Beans	Fresh Beans	1 kg	50.33	56.42	12.09	55.38	54.39	-1.79	51.80	5.00
Garlic	Garlic	100 Gram	7.00	4.86	-30.52	4.57	4.17	-8.87	10.25	-59.34
Ginger	Ginger	100 Gram	5.73	4.20	-26.78	4.19	4.04	-3.57	4.91	-17.79
Potato	Imported Potato	1 kg	12.45	12.45	-0.04	9.73	9.31	-4.30	11.36	-18.05
Canned baked beans	Baked Beans / Canned	400 Gram	11.01	13.46	22.31	14.36	14.43	0.53	11.83	21.97
Canned green peas	Green peas / Processed peas / Cannex	440 Gram	8.36	10.19	21.78	11.63	11.36	-2.34	9.11	24.68
Dhal	Yellow Colored Dhal	1 kg	43.66	47.40	8.55	50.32	48.92	-2.77	44.60	9.70
Salt	Fine Salt / Packed	500 Gram	4.66	5.07	8.93	5.26	5.29	0.58	4.65	13.72
Sugar	Dhoabraali Hakuru	1 kg	4.75	4.53	-4.73	4.61	4.53	-1.64	4.68	-3.24
Curry powder	Curry Powder / Antelope brand / Cannex	340 Gram	30.84	39.25	27.27	43.60	42.15	-3.33	31.86	32.32
Curry powder	Fish curry powder / Packed locally	50 Gram	5.08	6.49	27.70	6.66	6.77	1.60	5.75	17.71
Curry powder	Chicken curry powder / Packed locally	50 Gram	5.07	6.58	29.77	6.75	6.92	2.46	5.75	20.28
Dried Chilli	Dried Chilli (Hikimirus) / Loose	1 kg	52.73	80.16	52.03	96.50	92.48	-4.16	60.00	54.14
Chilli powder	Chilli Powder / Packed Locally	50 Gram	5.07	6.47	27.68	6.70	6.80	1.56	5.83	16.57
Onion	Imported Onion	1 kg	18.89	14.64	-22.51	9.97	9.71	-2.55	11.41	-14.87
Tea leaves-tea bag	Today's Taste / 100 tea bag	200 Gram	24.84	32.71	31.69	34.36	34.27	-0.26	26.22	30.70
Tea leaves-tea bag	Melesna / 100 tea bag	200 Gram	25.60	38.55	50.59	44.93	44.93	0.00	33.00	36.15
Tea leaves-tea bag	Akbar / 100 tea bag	200 Gram	24.85	34.20	37.64	35.75	35.08	-1.89	26.20	33.88
Tea leaves-loose	Ceylon Tea Leaves (loose)	1 kg	42.29	47.22	11.65	48.80	47.12	-3.45	40.00	17.79
Coffee	Nescafe, Cafe' soluble coffee / Canned	50 Gram	31.04	39.95	28.72	41.79	42.15	0.86	33.33	26.44
Juice-Sun quick	Sun quick / Orange Juice / Bottled	840 ml	56.35	69.47	23.30	74.28	73.38	-1.21	60.11	22.08
Juice-Foster Clark	Foster Clark / Powdered Juice / Bottled	750 Gram	54.55	64.32	17.91	66.45	65.99	-0.69	54.33	21.46
Milo	Nestle Milo Powder / Canned	400 Gram	53.58	79.32	48.06	86.22	86.14	-0.09	62.78	37.22
Apollo	Milk Chocó / Wafer cream	1 Piece	1.38	1.98	43.36	2.19	2.28	4.49	1.50	52.24
Candy	Solano	1 Piece / 25 Gram	0.45	0.43	-4.19	0.32	0.32	0.00	0.64	-50.52
Ice cream	Chocolate Ice cream / Tub	1 Ltr	46.28	56.29	21.62	65.29	65.29	0.00	51.67	26.37
Coke	Dubai coke / Canned	300 ml	7.08	10.30	45.46	10.90	11.21	2.77	7.83	43.05
Coke	Coca Cola / Large Bottle	1500 ml	24.01	29.04	20.95	30.26	30.10	-0.53	26.13	15.21
Aracanut	Raw Aracanut / Uncut / Loose	1 kg	49.41	98.22	98.78	92.61	90.03	-2.78	70.00	28.61
Cigarette	Marlboro	20 Piece / 1 Pack	19.74	29.92	51.59	39.44	38.66	-1.98	19.83	94.91
Cigarette	Benson	20 Piece / 1 Pack	18.78	29.92	59.29	39.44	38.66	-1.98	18.60	107.83
Saltish short-eats	Handulu gulha	1 Piece	1.35	1.51	11.49	1.17	1.17	0.00	1.50	-22.22
Sweet short-eats	Foni folhi	1 Piece	2.00	2.21	10.51	2.37	2.37	0.00	2.00	18.67
Jam	Tova Brand / Bottle	450 Gram	22.20	24.14	8.73	25.57	25.38	-0.76	23.00	10.34
Tomato paste	Tomato Paste / Small can	70 Gram	2.47	2.80	13.34	2.98	2.94	-1.24	2.50	17.60
Sauce	Tomato Sauce / life Brand	320 Gram / Bottled	10.17	12.95	27.33	15.40	15.07	-2.14	10.71	40.66
Sauce	Chili Sauce / life Brand	335 Gram / Bottled	11.18	14.69	31.42	17.06	16.82	-1.43	12.50	34.57
Sauce	Chili & Garlic Sauce / life Brand	320 Gram / Bottled	12.13	15.59	28.56	17.49	17.22	-1.51	13.50	27.59
Fish										
Canned fish in oil	Felivaru canned fish / Chunk in Oil	185 Gram	15.44	18.06	16.98	18.16	18.16	-0.01	16.85	7.74

Description	Specification	Unit	Annualized			Monthly		Month on Month		
			Average 12 monthly Price			Average Price		% Chn	Av Price	% Chn
			May2010- April2011	May 2011- April2012	% Chn	Mar-12	April2012	Mar2012 / April 2012	April 2011	April 2011/ April2012
Canned fish in brine	Felivaru Canned Fish / Chunk in Brine	185 Gram	13.85	16.86	21.74	17.09	16.95	-0.83	15.78	7.45
Dried fish chips	Pre packed Dried fish chips	100 Gram	10.47	13.54	29.39	12.73	12.73	0.00	10.67	19.30
Smoked fish	Smoked Fish (Valhoamas) / Loose	1 kg	61.67	123.26	99.88	148.73	142.39	-4.26	66.36	114.57
Skipjack tuna	Godha / Kalhubilamas	1 kg	30.79	68.98	124.02	92.38	93.03	0.70	47.04	97.77
Other tuna	Other Tuna / Latti	1 kg	22.08	67.89	207.49	101.00	94.77	-6.17	24.30	290.00
Reef fish	Reef Fish / Maaniya mas	1 kg	19.06	34.16	79.22	25.89	17.67	-31.75	23.25	-24.00
Clothing and Footwear										
Mens t-shirt	Men Shirt / Most Sold Brand	1 Piece	155.69	174.55	12.11	182.80	186.13	1.82	171.67	8.43
Men's shirt	Men T-Shirt / Most Sold material	1 Piece	168.40	201.80	19.83	219.95	219.95	0.00	175.00	25.69
School uniform	School Uniform / Boys / Medium size	1 Piece	56.08	115.54	106.01	121.90	121.90	0.00	102.50	18.93
Men's trousers	Men's Trousers / Long	1 Piece	180.97	223.54	23.52	224.60	229.60	2.23	203.33	12.92
Men's jeans	Mend's Jeans / Most Sold Material	1 Piece	219.72	270.15	22.95	295.43	295.43	0.00	243.33	21.41
Women's jeans	Women's Jeans / Fade	1 Piece	204.31	212.73	4.12	225.77	225.77	0.00	195.00	15.78
Women's t-shirt	Ladies T - shirt / Most sold Brand	1 Piece	151.67	185.64	22.40	191.03	191.03	0.00	156.67	21.94
Dress material	Most often sold material / Plane / Faatu	1 Muh	25.00	31.84	27.38	39.04	39.04	0.00	25.00	56.15
School shoes	School Shoes/ Girl / Most recently sold	1 Pair	137.64	174.44	26.74	192.20	188.50	-1.93	145.00	30.00
Nylon faivaan	Size 10	1 Pair	12.43	13.78	10.92	14.20	14.20	0.00	12.50	13.63
Men's shoes	Office Shoes	1 Pair	258.89	315.72	21.95	367.47	383.69	4.42	245.00	56.61
Men's sandals	Most recently sold brand	1 Pair	150.56	182.67	21.33	192.57	196.83	2.22	145.00	35.75
Women's sandals	Casual (home-wear)	1 Piece	137.08	171.59	25.17	209.11	200.00	-4.36	145.00	37.93
Housing										
Kerosene oil	Kerosene oil	1 Ltr	11.79	15.66	32.81	16.56	16.56	0.00	12.00	38.00
Cooking gas	Cooking gas / Excluding Transport cost	13 Kg	296.00	385.00	30.07	390.00	390.00	0.00	296.00	31.76
Cement	Cement bag	50 kg	80.88	101.35	25.31	105.51	122.00	15.63	82.50	47.88
Plywood	3 mm	1 Piece	112.29	134.12	19.44	159.10	166.82	4.85	112.75	47.95
Paint	Wall Paint	5 litre	170.58	183.72	7.70	198.53	198.53	0.00	171.00	16.10
Roofing sheet	0.6 mm / 1 feet	1 Piece	25.90	27.54	6.35	30.24	30.24	0.00	28.00	8.00
Furnishing										
Bedroom set	1 Queen size bed / dressing table / cup	1 Set	6,302.08	9,143.08	45.08	9,487.00	9,487.00	0.00	6,100.00	55.52
Single bed	Single bed / With fancy Plywood	1 Piece	1,605.21	1,916.56	19.40	2,385.00	2,385.00	0.00	1,650.00	44.55
Mattress	Single / kurlon / Temptation	1 Piece	2,329.79	3,243.94	39.24	3,420.00	3,420.00	0.00	2,700.00	26.67
Chair	Plastic Chair / large / without handle	1 Piece	130.00	139.16	7.05	154.48	154.48	0.00	130.00	18.83
Sofa Set	Sofa set / Plywood with sponge cushion	1 Piece	5,714.58	7,527.69	31.73	8,427.00	8,427.00	0.00	4,950.00	70.24
Linoleum	Aadhaige Tharafaalu (inoleum)	1 Feet	8.90	14.08	58.10	16.43	16.43	0.00	8.50	93.29
Bed sheet	Single Bed sheet / Ordinary brand	1 Piece	41.51	47.10	13.47	53.28	54.34	2.00	42.50	27.86
Refrigerator	Forest free Refrigerator / 50 kg/ Hitach	1 Piece	4,363.25	5,494.22	25.92	7,546.31	7,546.31	0.00	4,432.00	70.27
Fan	Electric fan (Ceiling) / Usha Brand / 43	1 Piece	456.15	493.52	8.19	514.51	514.51	0.00	445.00	15.62
Sewing machine	Sewing Meching / With 21 Design / Bro	1 Piece	5,135.42	5,616.46	9.37	5,692.50	5,692.50	0.00	5,500.00	3.50
Water pump	Pedrolor Water Pump / 1 inches	1 Piece	2,798.61	3,314.16	18.42	3,933.00	3,933.00	0.00	2,535.00	55.15
Battery	"D" Size Battery / 555 Brand	1 Piece	3.02	3.43	13.67	3.67	3.67	0.00	3.00	22.39
Washing power	Soklin Brand Washing powder Pack	1 Kg	22.77	21.82	-4.15	24.04	23.97	-0.28	19.67	21.88
Washing power	B 29 Brand Washing powder Pack	1 Kg	18.91	21.68	14.64	24.76	24.33	-1.75	19.00	28.04
Insecticides	Insecticides / Mosfly Brand / Small Bott	400 Ml	32.59	40.15	23.22	43.82	43.32	-1.15	30.60	41.57
Insecticides	Insecticides / Bop Spray Brand / Small	400 Ml	29.92	32.27	7.88	40.38	40.38	0.00	25.00	61.52
Light tube	Fluorescent tube / 2 feet / White Color	1 Piece	11.57	13.92	20.26	17.27	17.27	0.00	10.67	61.95
Glasses	Plain Glass / Medium Size	1 Piece	5.71	7.35	28.70	7.99	7.99	0.00	6.50	22.98
Health										
Forcevel	Forcevel / 500 mg	1 Tablet	3.36	3.92	16.47	4.00	4.00	0.00	3.75	6.67
Vicks balm	Vicks Balm / 19 Gram	1 Bottle	10.72	12.97	20.98	14.67	14.67	0.00	11.00	33.33
Helibo orange	Helibo Orange / 200 ml	1 Bottle	41.67	55.25	32.59	58.75	58.75	0.00	48.00	22.40
Diegen	Diegen / 200 ml	1 Bottle	25.90	34.60	33.56	39.29	39.29	0.00	29.50	33.18
Vitamin C	Vitamin C / 500 mg	1 Tablet	0.73	0.99	36.12	1.00	1.00	0.00	1.00	0.00
Doctor's consulting fee-ge	consultation fee / General Doctor	Per Patient	81.25	87.50	7.69	100.00	100.00	0.00	81.25	23.08
Doctor's consulting fee-spr	Doctor consultation fee / Specialist	Per Patient	122.92	165.56	34.69	191.67	191.67	0.00	130.00	47.44
Ultra sonogram test	Ultra Sound Scan / Hole Abdomen	Per test	480.00	524.44	9.26	533.33	533.33	0.00	480.00	11.11
Chest x-ray	Chest x-ray	Per test	107.78	141.17	30.98	175.00	175.00	0.00	110.00	59.09
Transport										
Motorcycle	Honda Wave 125 I	1 Piece	45,000.00	53,516.50	18.93	55,683.00	57,028.00	2.42	45,000.00	26.73
Motorcycle	Honda Wave 125 H	1 Piece	39,666.67	47,319.33	19.29	50,456.00	50,456.00	0.00	40,500.00	24.58
Bicycle	Mountain	1 Piece	1,133.33	1,231.02	8.62	1,298.50	1,298.50	0.00	1,050.00	23.67
Cleaning of motorcycle	Full cycle	Per vehicle	70.00	78.17	11.67	82.50	82.50	0.00	70.00	17.86
Petrol	Petrol	1 Ltr	11.50	15.98	38.95	15.67	16.54	5.57	15.02	10.14
International airfare	Male'/Colombo/male'	Per Person	3,994.17	5,214.11	30.54	5,205.18	5,157.99	-0.91	4,579.68	12.63
Domestic airfare	Male'/Gan/Male'	Per Person / Adult	2,805.92	3,295.05	17.43	3,379.28	3,392.00	0.38	3,206.00	5.80
Domestic airfare	Male'/Hanimadhoo/Male'	Per Person / Adult	2,164.25	2,574.10	18.94	2,637.28	2,650.00	0.48	2,506.00	5.75
Domestic airfare	Male'/Kade'dhoo/ Male'	Per Person / Adult	2,485.08	2,935.00	18.10	3,008.28	3,021.00	0.42	2,856.00	5.78
Domestic airfare	Male'/Kah'dhoo/male'	Per Person / Adult	2,164.25	2,574.10	18.94	2,637.28	2,650.00	0.48	2,506.00	5.75
Recreation										
Aerobics	1 hr class / 3 classes per week	Per Month	290.83	350.06	20.37	371.00	371.00	0.00	320.00	15.94
Recordable CD	Recordable CD / Blank CD	1 Piece	4.51	4.12	-8.72	4.81	4.81	0.00	3.40	41.39
Monitor book	Exercise Book / 200 Pages	1 Book	13.86	15.12	9.13	17.77	16.93	-4.74	12.80	32.26
Color box	Swan Brand / Small Size / 12 Color	1 Box	20.58	22.59	9.78	22.95	29.62	29.09	21.20	39.73
Glaze paper	Glaze Paper	1 Piece	1.26	1.65	31.54	1.83	1.81	-1.20	1.29	40.86
Hotels, cafés and Restaurants										
Meals (lunch packet)	4 roshi / 1fish curry / 1 black tea / 1 dh	Per person	17.00	22.33	31.33	23.32	23.32	0.00	17.00	37.18
Meals (lunch packet)	4 roshi / 1 chicken curry / 1 black tea / 1	Per person	21.17	37.69	78.08	39.00	39.00	0.00	27.00	44.44
Pizza	Tuna Mushroom whole pizza		64.72	83.26	28.63	90.00	90.03	0.04	71.67	25.63
Restaurant meals	Fish & Chips	1 plate	46.94	55.36	17.93	62.67	62.87	0.32	50.00	25.73
Restaurant meals	Nasi Goreng	1 plate	50.56	60.87	20.39	66.67	66.67	0.00	55.00	21.21
Miscellaneous										
Cosmetic treatment	Cosmetic Treatment / Eye brought	Per time	30.00	36.75	22.50	50.00	50.00	0.00	30.00	66.67
Haircut-female	Female Hair Cut	Per Person	122.22	149.49	22.31	161.33	161.33	0.00	150.00	7.56
Haircut-men	Male Hair Cut	Per Person	31.81	51.46	61.80	59.75	59.75	0.00	32.50	83.85
Baby diapers	Huggies / Small Size	1 Packet	126.43	143.18	13.25	144.24	149.52	3.66	133.33	12.14
Sanitary pads	Stay Free	1 Packet	12.85	14.69	14.32	15.83	16.28	2.82	13.80	17.97
Sanitary pads	Riaa	1 Packet	18.29	13.71	-25.08	13.81	13.87	0.40	14.00	-0.96
Soap	Lux Soap	100 Gram	4.64	5.52	18.96	6.59	6.70	1.56	4.61	45.21
Baby soap	Johnson Baby Soap	100 Gram	8.16	10.10	23.69	10.68	10.68	0.00	8.57	24.59

Description	Specification	Unit	Annualized			Monthly		Month on Month		
			Average 12 monthly Price			Average Price		% Chn	Av Price	% Chn
			May2010- April2011	May 2011- April2012	% Chn	Mar-12	April2012	Mar2012 / April 2012	April 2011	April 2011/ April2012
Facial cream	Fair & Lovely / Facial Cream	25 Gram	16.25	19.34	19.08	26.64	24.03	-9.77	15.67	53.41
Baby lotion	Johnson & Johnson Baby Lotion	200 MI, bottle	29.84	34.10	14.29	35.25	36.00	2.13	31.25	15.21
Body lotion	Nivea Lotion	200 MI	41.04	45.46	10.76	44.70	44.69	-0.02	52.75	-15.27
Body lotion	Enchanteaur Lotion	200 MI	31.90	33.25	4.20	36.61	36.61	0.00	27.43	33.46
Baby cologne	Baby Cheramy Cologne	175 ml	20.58	32.92	59.93	35.37	35.84	1.33	30.00	19.47
Baby cologne	Johnson & Johnson Colone	175 ml	20.79	21.74	4.57	22.86	22.82	-0.15	19.60	16.43
Cologne	Splash	200 MI	19.34	23.44	21.18	24.84	24.55	-1.18	19.50	25.89
Cologne	Loviline	175 ml	20.81	27.00	29.79	28.23	27.65	-2.05	22.00	25.67
Hair cream	Max	175 ml	26.31	32.84	24.83	34.99	34.99	0.01	31.00	12.87
Hair cream	Elite	175 ml	24.35	34.63	42.24	37.10	36.57	-1.43	31.00	17.96
Hair cream	Gatsby	175 ml	22.09	20.86	-5.58	23.16	22.81	-1.53	17.50	30.31
Shampoo	Emerone	200 MI	16.75	24.07	43.75	26.24	25.81	-1.64	21.00	22.90
Shampoo	Head & shoulders	200 MI	31.28	39.05	24.82	39.22	38.69	-1.37	33.63	15.06
Shampoo	Pantene Pro vitamin	200 MI	29.38	33.87	15.26	37.63	36.71	-2.44	28.50	28.81
Toothpaste	Aqua fresh,	50 MI	14.43	15.35	6.38	15.44	15.22	-1.42	14.38	5.91

	Consumer Price Index - CPI (June 2004 =100)																		% change in CPI / Inflation Rate																	
	Total	Total Excluding Fish	1. Food and beverages Including Fish	Food and beverages Excluding Fish	1.1 Fish	2. Tobacco	3. Clothing & footwear	4. Housing, water, electricity, gas & other fuels	Actual rentals for housing	5. Furnishing, household equipments & routine maintenance of	6. Health	7. Transport	8. Communication	9. Recreation & culture	10. Education	11. Hotels, cafes & restaurants	12. Miscellaneous goods & services	13. Religious activity	Total	Total Excluding Fish	Food and beverages Including Fish	Food and beverages Excluding Fish	Fish	Tobacco	Clothing & footwear	Housing, water, electricity, gas & other fuels	Actual rentals for housing	Furnishing, household equipments & routine maintenance of	Health	Transport	Communication	Recreation & culture	Education	Hotels, cafes & restaurants	Miscellaneous goods & services	Religious activity
	Weights	48.90	46.48	13.39	10.97	2.42	0.93	2.45	12.30	7.17	2.85	2.76	2.92	3.84	2.10	1.51	0.77	2.96	0.11	48.90	46.48	13.39	10.97	2.42	0.93	2.45	12.30	7.17	2.85	2.76	2.92	3.84	2.10	1.51	0.77	2.96
2009	130.21	130.13	151.57	155.95	131.68	111.35	109.30	131.18	143.81	129.43	151.16	153.56	61.32	88.34	150.19	141.33	118.07	100.00	4.53	5.48	0.52	2.93	-10.70	-1.80	3.21	7.82	14.29	10.94	2.25	0.98	-0.75	5.01	35.09	2.57	7.10	0.00
2010	138.21	138.02	162.90	167.54	141.88	110.98	112.54	141.13	153.04	137.17	158.21	158.66	61.46	93.41	164.38	145.89	123.88	100.00	6.15	6.07	7.48	7.43	7.74	-0.33	2.96	7.59	6.42	5.98	4.66	3.32	0.23	5.74	9.44	3.23	4.93	0.00
2011	153.79	150.03	195.36	188.60	226.03	141.21	127.04	145.24	159.87	142.94	174.92	180.47	61.61	91.43	194.52	168.68	133.07	100.00	11.27	8.70	19.93	12.57	59.31	27.24	12.89	2.91	4.46	4.20	10.56	13.74	0.24	-2.13	18.34	15.62	7.42	0.00
May 2010 to April 2011	141.45	140.71	169.98	173.16	155.57	112.67	113.52	142.93	155.65	137.87	160.88	161.44	61.46	93.61	175.78	147.34	124.26	100.00	15.05	11.12	24.61	12.97	83.36	58.90	21.02	2.53	4.25	10.40	13.85	17.98	0.09	-2.36	16.79	27.45	15.61	0.00
May 2011 to April 2012	162.74	156.36	211.80	195.61	285.26	179.03	137.38	146.55	162.26	152.21	183.17	190.47	61.52	91.39	205.29	187.78	143.66	100.00																		
April 2012 / April 2011																		14.98																		
2011 Apr	149.19	145.48	188.04	180.89	220.43	119.55	120.58	144.78	158.74	135.96	167.67	173.09	61.46	90.46	194.52	158.03	128.60	100.00	4.42	2.28	10.65	4.44	42.07	3.90	3.64	0.14	0.17	-2.01	1.21	6.65	0.00	-3.79	0.00	8.45	5.05	0.00
May	154.13	149.71	198.54	189.59	239.10	125.87	123.69	146.74	158.95	136.43	178.16	183.27	62.07	90.45	194.52	162.51	127.85	100.00	3.31	2.91	5.59	4.81	8.47	5.29	2.58	1.35	0.13	0.35	6.25	5.88	0.98	-0.02	0.00	2.83	-0.58	0.00
June	155.53	150.22	200.21	187.57	257.53	138.69	124.62	146.97	159.34	140.21	178.58	183.61	62.07	90.85	194.52	166.11	132.07	100.00	0.91	0.34	0.84	-1.07	7.71	10.19	0.75	0.16	0.25	2.77	0.24	0.19	0.00	0.45	0.00	2.22	3.30	0.00
July	155.63	149.23	204.88	188.64	278.54	139.34	125.94	143.41	159.46	140.95	172.95	183.61	61.99	87.83	194.52	166.11	132.76	100.00	0.06	-0.66	2.33	0.57	8.16	0.47	1.06	-2.42	0.08	0.53	-3.15	0.00	-0.13	-3.33	0.00	0.00	0.52	0.00
Aug	156.12	150.96	204.53	193.35	255.24	137.71	127.66	144.60	160.08	141.40	172.95	184.90	61.90	87.83	194.52	166.11	135.00	100.00	0.32	1.16	-0.17	2.50	-8.37	-1.18	1.36	0.83	0.39	0.31	0.00	0.71	-0.14	0.01	0.00	0.00	1.69	0.00
Sep	158.15	153.01	206.34	195.20	256.84	143.21	131.88	144.90	160.48	142.60	183.63	185.75	61.90	89.25	194.52	179.50	137.52	100.00	1.30	1.36	0.88	0.96	0.63	4.00	3.31	0.21	0.25	0.85	6.17	0.46	0.00	1.61	0.00	8.07	1.86	0.00
Oct	158.67	156.20	199.64	198.21	206.14	150.56	142.24	145.15	161.65	152.89	183.89	193.64	61.18	92.44	194.52	186.97	143.33	100.00	0.33	2.09	-3.25	1.54	-19.74	5.13	7.85	0.18	0.73	7.22	0.14	4.25	-1.17	3.58	0.00	4.16	4.23	0.00
Nov	164.11	157.80	215.54	200.14	285.37	152.48	142.06	146.62	162.76	156.06	184.90	194.86	61.18	92.55	194.52	200.81	145.75	100.00	3.42	1.02	7.96	0.98	38.44	1.28	-0.13	1.01	0.69	2.07	0.55	0.63	0.00	0.11	0.00	7.40	1.69	0.00
Dec	166.04	160.60	216.41	204.47	270.58	241.17	140.25	146.80	163.04	154.80	184.90	196.50	61.18	92.58	194.52	200.81	146.04	100.00	1.18	1.77	0.40	2.16	-5.18	58.16	-1.27	0.12	0.17	-0.80	0.00	0.84	0.00	0.03	0.00	0.00	0.20	0.00
2012 Jan	170.86	161.93	225.81	200.10	342.43	236.92	145.11	147.05	164.20	161.18	188.14	195.83	61.18	93.24	226.83	203.24	153.35	100.00	2.90	0.83	4.34	-2.14	26.55	-1.76	3.46	0.17	0.71	4.12	1.75	-0.34	0.00	0.72	16.62	1.21	5.00	0.00
Feb	170.35	161.88	221.89	197.37	333.14	237.24	146.76	147.73	164.79	164.91	188.28	192.88	61.18	93.09	226.83	205.40	157.09	100.00	-0.30	-0.03	-1.73	-1.37	-2.71	0.13	1.14	0.47	0.36	2.31	0.07	-1.51	0.00	-0.16	0.00	1.06	2.44	0.00
Mar	171.69	162.36	224.58	196.73	350.93	224.77	148.41	148.85	165.38	167.58	190.82	195.05	61.23	93.30	226.83	207.90	157.04	100.00	0.79	0.30	1.21	-0.32	5.34	-5.26	1.12	0.76	0.36	1.62	1.35	1.13	0.09	0.23	0.00	1.22	-0.03	0.00
Apr	171.54	162.39	223.22	195.87	347.30	220.43	149.96	149.82	167.00	167.49	190.82	195.71	61.23	93.32	226.83	207.92	156.13	100.00	-0.09	0.02	-0.61	-0.44	-1.03	-1.93	1.05	0.65	0.98	-0.05	0.00	0.34	0.00	0.03	0.00	0.01	-0.58	0.00