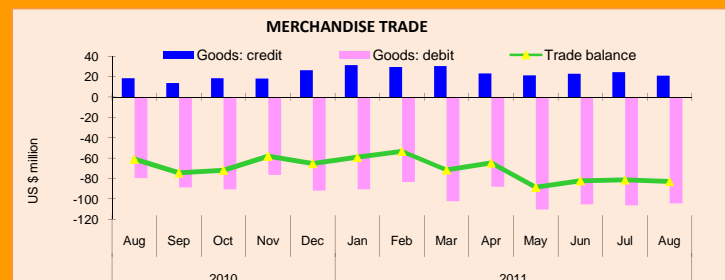


KEY ECONOMIC INDICATORS - September 2011

Monthly Indicators	2010					2011							
	Aug	Sep	Oct	Nov	Dec	Jan	Feb	Mar	Apr	May	June	Jul	Aug
8. PUBLIC FINANCE / CASH FLOW (Rf mn)													
8.1 Total revenue and grants (Excl project loans and grants)	671.6	560.1	665.1	1503.5	752.6	540.9	516.8	682.7	854.8	850.3	969.0	971.1	866.5
8.1.1 Tourism tax	41.7	50.1	39.3	43.1	41.0	53.9	65.0	62.3	66.4	73.9	57.9	45.0	57.8
8.1.2 Import duty	187.2	172.9	181.2	172.9	205.9	203.9	164.1	203.2	177.8	216.6	238.7	212.8	204.2
8.1.3 SOE transfers	11.0	32.1	19.5	0.3	128.6	4.0	1.0	2.3	228.0	50.6	9.8	161.8	190.7
8.1.4 Lease rents from resorts	41.3	48.2	107.9	1002.3	32.5	129.0	7.9	174.2	39.2	40.1	140.4	147.4	34.6
8.2 Expenditure	828.9	1256.6	816.1	654.0	1256.0	872.8	896.8	1127.5	789.9	899.2	784.3	1103.8	841.2
8.3 Deficit / Surplus	-157.3	-696.4	-151.1	849.5	-503.4	-332.0	-370.0	-444.8	64.8	-48.9	184.8	-132.7	25.3
8.4 Import duty exemptions (including duty free shops).	26.8	51.4	46.7	34.6	32.6	33.2	27.7	37.1	70.6	169.5	111.5	103.6	91.9
9. MONEY AND BANKING (Rf mn)													
9.1 Total Liquidity (M2)	14,372.0	14,604.7	15,452.3	15,913.8	15,860.8	16,409.1	17,204.8	17,790.9	19,026.2	18,788.4	18,828.7	18,694.9	18,603.1
9.2 Net foreign assets	(1,298.6)	(1,439.4)	(777.9)	452.9	689.4	899.5	1,298.4	1,809.7	2,085.0	2,321.8	2,012.6	2,061.5	1,338.2
9.3 Domestic credit	22,294.3	22,405.9	22,872.3	22,304.9	22,198.4	22,708.7	22,986.8	23,418.4	25,111.9	24,990.5	24,599.6	24,507.3	25,171.8
9.3.1 Credit to private sector	15,331.5	15,082.4	15,298.9	15,340.0	15,187.7	15,363.1	15,357.1	15,327.5	17,217.2	17,226.1	16,676.2	16,630.5	16,794.9
9.3.2 Net claims on Government	5,254.1	5,618.4	5,909.5	5,326.9	5,401.2	5,759.0	6,125.3	6,602.7	6,260.0	6,224.5	6,427.9	6,169.7	6,584.1
9.4 Dollarisation Ratio	44.6	43.7	45.6	46.1	47.1	46.7	47.5	45.6	49.4	48.7	47.2	49.0	47.1
10. EXTERNAL TRADE (Rf mn)													
10.1 Exports (f.o.b.)	65.7	55.4	106.5	79.4	128.6	227.7	138.9	142.4	91.5	84.9	138.7	137.4	99.0
10.1.1 Fresh or Chilled Tuna	18.4	26.4	26.1	1.3	30.6	41.7	61.5	61.4	46.0	43.5	56.5	74.0	69.0
10.1.2 Frozen Tuna	27.0	0.0	45.3	18.6	61.6	129.7	51.0	34.5	2.7	6.8	45.4	26.6	0.0
10.1.3 Canned Fish	2.4	7.4	5.2	4.2	4.3	18.4	7.2	12.4	21.7	9.8	8.3	5.7	11.4
10.1.4 Dried Tuna	8.9	12.8	17.9	14.7	19.1	19.6	10.6	9.9	9.1	8.8	12.1	14.4	7.4
10.1.5 % Chn of Exports	-12.4	-15.8	92.4	-25.4	61.8	77.1	-39.0	2.5	-35.7	-7.2	63.2	-0.9	-27.9
10.2 Imports (c.i.f.)	1157.9	1287.3	1316.1	1109.2	1334.8	1315.5	1208.0	1483.0	1392.5	1917.7	1833.0	1848.8	1820.1
10.2.1 Food and beverages	307.0	235.5	257.8	262.9	291.6	260.9	265.4	270.4	270.9	413.5	312.6	391.0	376.3
10.2.2 Fuel and Lubricants	192.1	264.6	306.3	144.1	365.1	367.5	330.0	503.5	346.2	558.5	350.6	416.0	482.0
10.2.3 Consumer Goods	187.5	195.0	214.6	204.5	223.0	195.0	182.1	191.1	179.0	218.2	268.7	244.9	244.3
10.2.4 Industrial supplies	268.7	291.7	272.5	243.3	253.5	283.5	250.7	288.6	242.8	358.4	388.4	374.3	313.1
10.2.5 Machinery equipment	168.9	227.3	189.6	181.4	174.6	162.6	145.1	163.0	157.4	224.3	246.4	308.1	350.6
10.2.6 % Chn of Imports	-5.0	10.9	1.2	-14.8	20.3	-1.4	-8.2	22.8	-6.1	37.7	-4.4	0.9	-1.6



MERCHANDISE TRADE:

EXPORTS: The value of exports decreased by 28 percent in August 2011 when compared to July 2011. However it showed an increase of 51 percent when compared to the same period of 2010. The exports of Frozen Tuna was null in the month of August 2011. The total value of exports in August 2011 is 99.0 million Rf (fob).

IMPORTS: The value of Imports in August showed a slight decline of 1.6 percent when compared to July 2011. And it showed an increase of 57.2 percent when compared to the same period of 2010. The total of imports in August 2011 is 1820.1 million Rf (cif).

BALANCE OF PAYMENTS: Merchandise exports of August 2011 decreased to 21.2 US\$ from 24.5 million in July 2011. However this shows an increase of 13.9 percent when compared to August 2010. And, the overall trade balance increased to US\$83.0 million in August 2011 from US\$81.5 million in July 2011.

PUBLIC FINANCE:

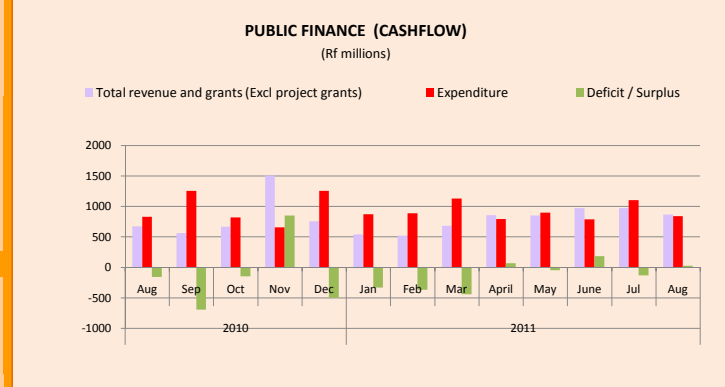
Based on the monthly cashflow estimates for August 2011, Revenue showed a decline of 11 percent when compared to July 2011. However it showed an increase of 29 percent when compared to August 2010. The total revenue in August 2011 is Mrf 866.5 million.

The expenditure in August 2011 decreased by 23.8 percent when compared to July 2011 and showed a slight increase of 1.5 percent when compared to August 2010. The total expenditure in August 2011 is Mrf 814.2 million.

August 2011 showed a surplus of Mrf 25.3 million.

EXTERNAL RESERVES:

Gross international reserves decreased by around 2 percent to 323.0 million US\$ in August 2011 from 329.1 million US\$ at the end of July 2011.



11. BALANCE OF PAYMENTS (US\$ mn)													
11.1 Goods: credit	18.6	13.9	18.6	18.3	26.4	31.5	29.7	30.5	23.3	21.5	23.0	24.5	21.2
11.2 Goods: debit	-79.6	-88.4	-90.5	-76.3	-91.8	-90.5	-83.1	-102.0	-87.9	-110.1	-105.2	-106.0	-104.2
11.3 Trade balance	-61.0	-74.5	-71.9	-58.0	-65.4	-59.1	-53.3	-71.5	-64.6	-88.6	-82.2	-81.5	-83.0
12. EXTERNAL RESERVES													
12.1 Gross International reserves (US\$ mn)	289.8	271.3	265.2	355.1	349.9	344.5	340.3	371.6	364.9	338.4	346.3	329.1	323.0
12.2 External reserves in months of imports (c.i.f.)	3.3	3.0	2.9	3.9	3.8	3.7	3.6	3.8	3.7	3.4	3.3	3.1	3.0

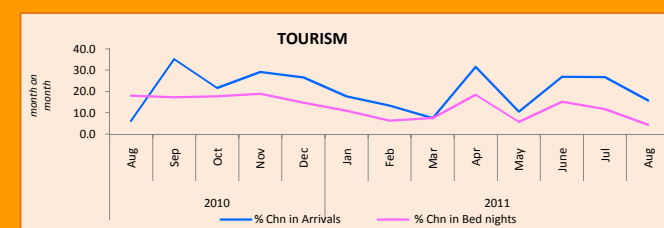
Source: DNP, MMA, MOT, MHRYS, MOFA, MOFT, Maldives Customs Service

KEY ECONOMIC INDICATORS

September 2011

Monthly Issue

Monthly Indicators	2010					2011							
	Aug	Sep	Oct	Nov	Dec	Jan	Feb	Mar	Apr	May	June	Jul	Aug
1. GDP (at 2003 constat prices) / published on April 2011													
1.1 GDP Rf mn.	19,507.8	19,507.8	19,507.8	19,507.8	19,507.8	19,507.8	21,123.0	21,123.0	21,123.0	21,123.0	21,123.0	21,123.0	21,123.0
1.2 GDP per capita US \$	3,872.3	3,872.3	3,872.3	3,872.3	3,872.3	3,872.3	4,061.1	4,061.1	4,061.1	4,061.1	4,061.1	4,061.1	4,061.1
1.3 GDP growth (%)	9.9	9.9	9.9	9.9	9.9	9.9	8.3	8.3	8.3	8.3	8.3	8.3	8.3
2. TOURISM													
2.1 Tourist arrivals ('000s)	66.3	62.5	74.7	74.3	74.3	79.5	87.4	80.7	79.9	64.5	55.9	72.5	76.8
2.1.1 % Chn in Arrivals (month on month)	6.2	35.2	21.7	29.1	26.6	17.8	13.4	7.6	31.5	10.6	26.9	26.7	15.8
2.2 Tourist bed nights ('000s)	498.2	445.5	542.9	543.2	541.2	612.4	614.8	625.3	595.7	468.9	376.9	478.5	519.7
2.2.2 % Chn in Bed nights (month on month)	18.0	17.3	17.7	19.0	14.8	10.9	6.3	7.5	18.4	5.7	15.1	11.7	4.3
2.3 Bed capacity ('000s)	23.6	23.7	23.5	23.7	24.0	24.0	24.6	24.8	24.9	24.6	24.6	24.2	24.2
2.4 Capacity utilization rate (%)	69.5	59.9	46.3	58.8	68.0	82.2	89.2	81.3	79.5	61.5	51.0	63.9	69.1



TOURISM PERFORMANCE: AUGUST 2011

Arrivals:

Tourist arrivals in August 2011 increased by 6 percent when compared to July 2011 and it showed an increase of 16 percent when compared to August 2010. The total arrivals from Jan - August 2011 is 597.2 ('000s) which is 18 percent higher than the same period of 2010

Bednights:

Bednights in August 2011 increased by 9 percent when compared to July 2011 and showed an increase of 4 percent when compared to August 2010.

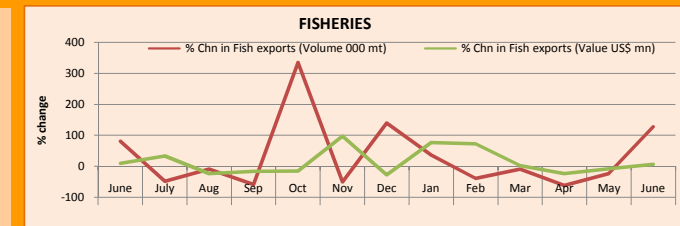
3. FISHERIES

3.1 Landings('000 MTs)	7.4	8.3	8.2	8.8	8.1	8.0	8.0	7.4	7.2	6.7	6.8	6.4	na
3.1.1 % Chn in Fish landings	8.8	12.2	-1.2	7.3	-8.0	-1.4	0.6	-8.3	-2.6	-6.5	1.5	-5.9	na
3.2 Tuna purchases ('000 MTs)	1.0	3.5	2.3	3.5	4.9	4.7	3.4	2.3	1.8	0.8	1.8	1.2	na
3.2.1 % Chn in Fish purchases	-37.5	250.0	-34.3	52.2	40.0	-3.5	-28.4	-32.1	-22.6	-55.1	125.0	-33.3	na
3.5 Fish Exports (US\$ mn.)	4.6	3.9	7.7	5.6	9.7	17.2	29.7	30.5	23.3	21.5	23.0	na	na
3.6 Fish Exports ('000 MTs)	2.2	0.9	4.0	2.0	4.8	6.6	4.0	3.7	1.4	1.1	2.5	na	na
3.6.1 % Chn in Fish exports	-9.0	-57.8	335.0	-50.2	140.2	37.1	-39.0	-8.6	-61.3	-23.0	127.3	na	na

FISHERIES JULY 2011

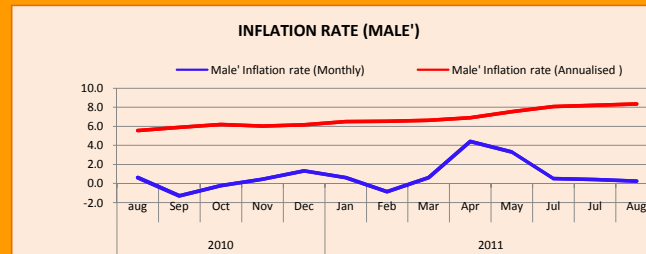
Fish Landings and purchases: Fish catch in July 2011, declined by 5.9 percent when compared to June 2011 and also a decline of 5.9 percent when compared July 2010. The total fish catch from Jan - Jul 2011 is 7.7 percent higher than the same period of 2010.

Fish Exports: The quantity of fish exports in June 2011 showed an increase of 127 percent when compared to May 2011 and showed an increase of 4 percent when compared to the same period of 2010. The earning from fish exports also increased by 7 percent when compared to May 2011.



4. CONSUMER PRICE INDEX (CPI)

4.1 CPI (Male')	141.94	140.11	139.79	140.46	142.34	143.22	141.98	142.88	149.19	154.13	154.95	155.63	156.04
4.2 Inflation rate (Male')	0.63	-1.29	-0.23	0.47	1.34	0.62	-0.87	0.63	4.42	3.31	0.53	0.44	0.27
4.3 CPI (Atoll)	141.19	140.11	139.40	138.40	139.95	144.03	143.50	142.96	147.98	153.91	na	na	na
4.4 Inflation rate (Atoll)	0.57	-0.77	-0.51	-0.72	1.12	2.91	-0.37	-0.38	3.51	4.01	na	na	na
4.5 CPI (National)	141.56	140.11	139.59	139.41	141.12	143.58	142.76	142.92	148.57	154.69	na	na	na
4.6 Inflation Rate (National)	0.60	-1.02	-0.37	-0.13	1.23	1.74	-0.57	0.11	3.95	4.12	na	na	na



INFLATION: AUGUST 2011

Inflation rate of Male' for August 2011 increased at 0.3 percent compared to July 2011. On an annualised basis, Male' Inflation rate stood at 8.3 percent in August 2011.

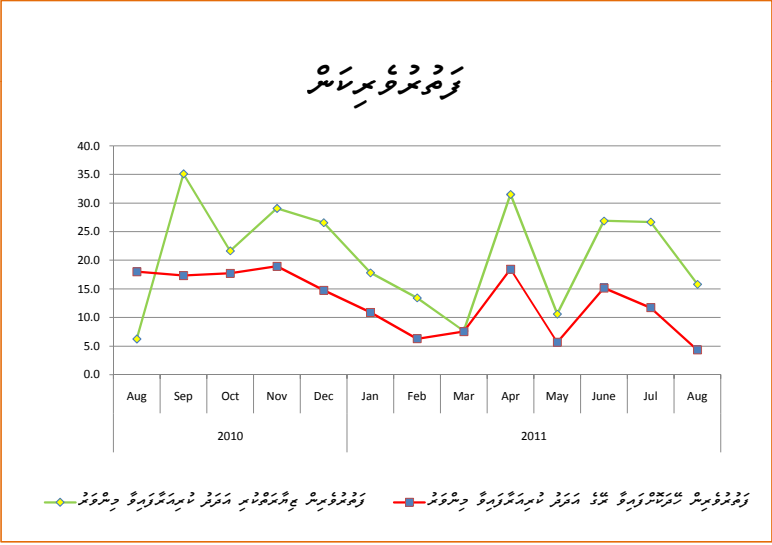
MAY 2011

National inflation rate for May 2011 is 4.12 percent. And the Inflation rate of Atolls for May 2011 increased at 4 percent compared to the previous month.

5. SELECTED PRICES (end of period)

5.1 Petrol - Rf / ltr	10.25	10.25	10.25	10.25	10.60	10.60	11.80	13.53	15.02	16.17	16.17	16.17	16.17
5.2 Diesel - Rf / ltr	9.80	9.80	9										

پاکستان کے معاشی جائزہ 2011

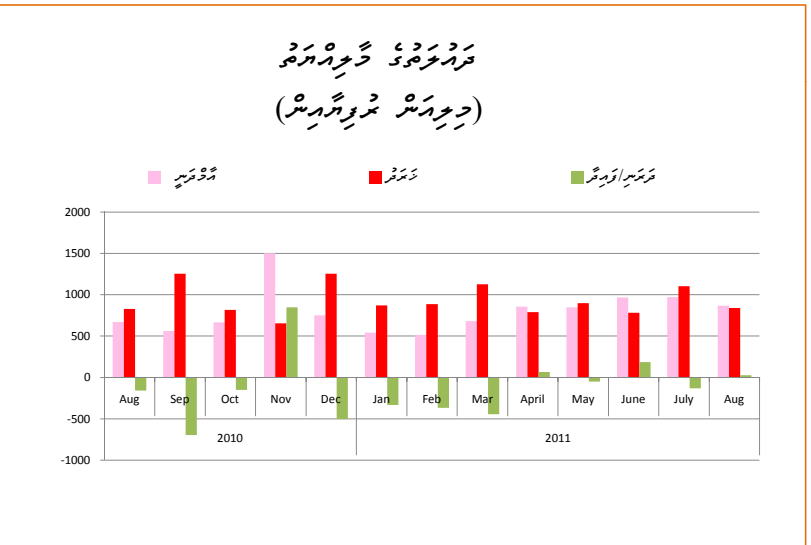


قرضوں کی شرح

2011 قسماً دہائیوں کے لیے شرحوں میں اضافہ دیکھا گیا۔ ستمبر 2010 میں 3 ماہ کی سرکاری ضمانتی شرح 5.5 فیصد تھی، جبکہ اگست 2011 میں یہ 4.0 فیصد رہی۔ 6 ماہ کی سرکاری ضمانتی شرح 18.0 فیصد سے 4.0 فیصد اور 12 ماہ کی سرکاری ضمانتی شرح 18.0 فیصد سے 4.0 فیصد تک گری۔

قرضوں کی شرح

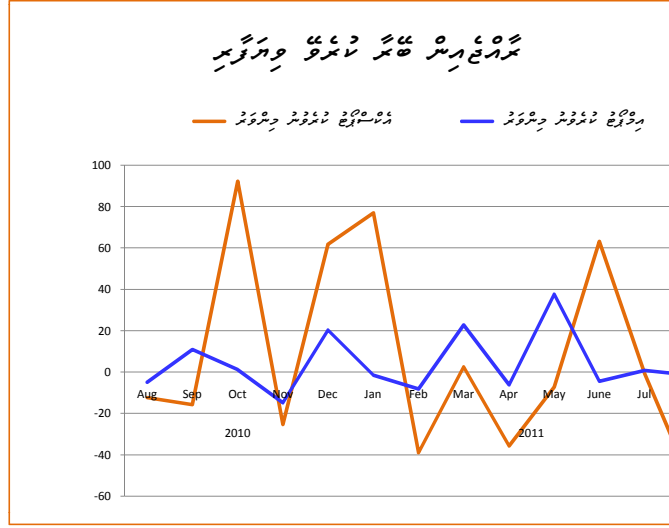
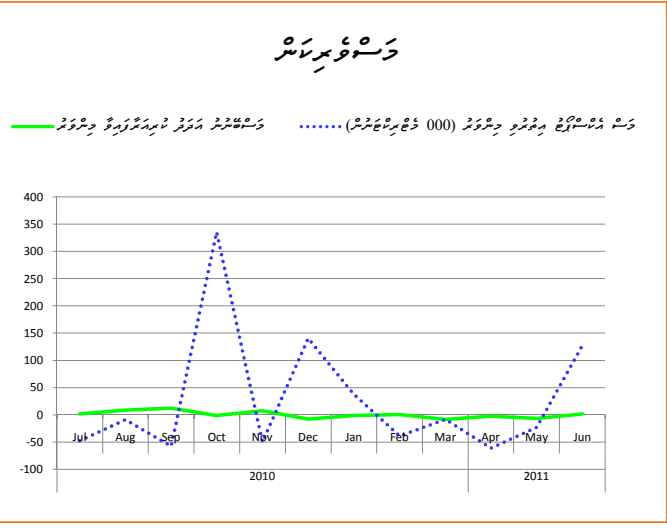
قرضوں کی شرحوں میں اضافہ دیکھا گیا۔ ستمبر 2010 میں 3 ماہ کی سرکاری ضمانتی شرح 5.5 فیصد تھی، جبکہ اگست 2011 میں یہ 4.0 فیصد رہی۔ 6 ماہ کی سرکاری ضمانتی شرح 18.0 فیصد سے 4.0 فیصد اور 12 ماہ کی سرکاری ضمانتی شرح 18.0 فیصد سے 4.0 فیصد تک گری۔



رہنما

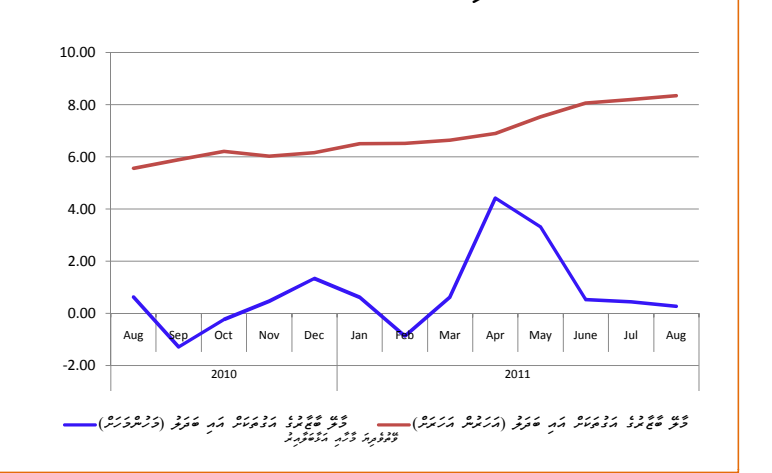
2011 قسماً دہائیوں کے لیے رہنما میں اضافہ دیکھا گیا۔ ستمبر 2010 میں رہنما 5.9 فیصد تھا، جبکہ اگست 2011 میں یہ 5.9 فیصد رہا۔

2011 قسماً دہائیوں کے لیے رہنما میں اضافہ دیکھا گیا۔ ستمبر 2010 میں رہنما 5.9 فیصد تھا، جبکہ اگست 2011 میں یہ 5.9 فیصد رہا۔



رہنما

2011 قسماً دہائیوں کے لیے رہنما میں اضافہ دیکھا گیا۔ ستمبر 2010 میں رہنما 5.9 فیصد تھا، جبکہ اگست 2011 میں یہ 5.9 فیصد رہا۔



رہنما

2011 قسماً دہائیوں کے لیے رہنما میں اضافہ دیکھا گیا۔ ستمبر 2010 میں رہنما 5.9 فیصد تھا، جبکہ اگست 2011 میں یہ 5.9 فیصد رہا۔

