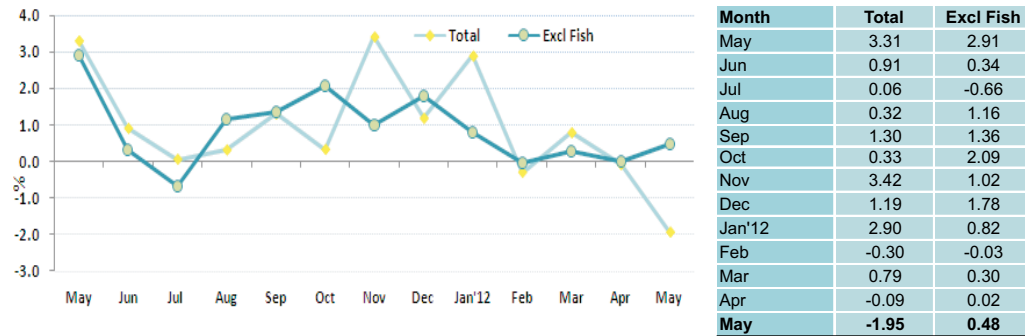


1. Inflation Rate of Male' (Monthly): May 2012 compared to April 2012

To measure month to month inflation, this month's index is compared with the previous month inflation (for e.g: May '12 /April '12). The monthly inflation for May 2012 is -1.95%% and 0.48% is the total excluding fish.

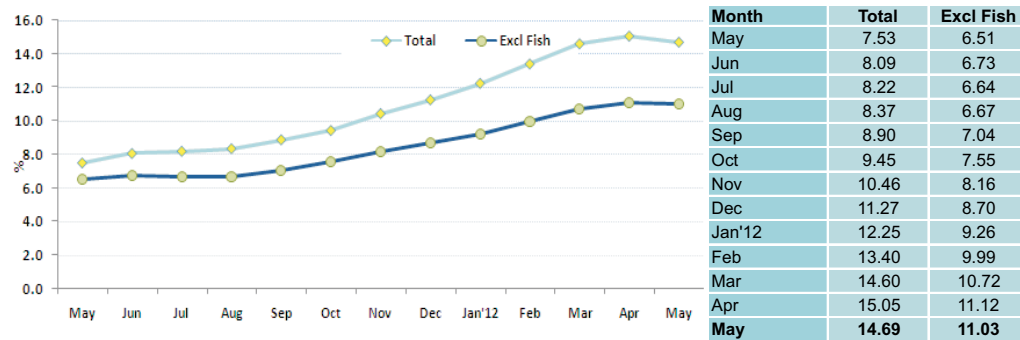
Figure 7. Monthly Inflation Rate of Male', (compared to the previous month)



2. Inflation Rate of Male' (Annualized): June '11 to May '12 / June '10 to May '11

The annualized inflation rate for any month compares the average for the 12 monthly indices with that of the preceding 12 months (Eg: June'11 to May'12 / June'10 to May'11). This index shows an annual inflation of 14.69%, and the annualized total excluding fish is 11.03%.

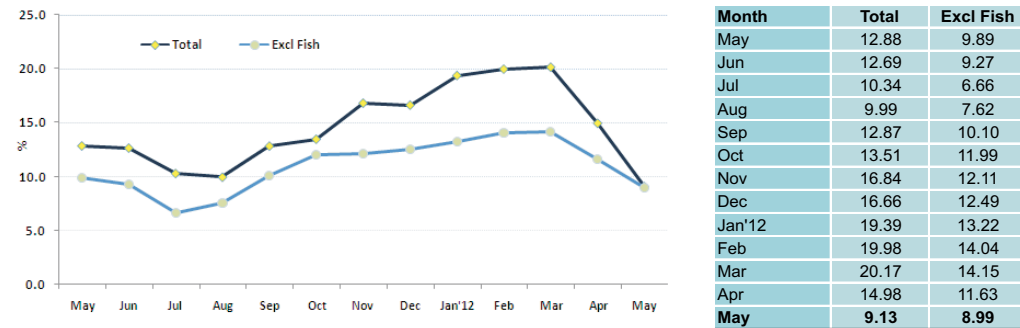
Figure 8. Annualized Inflation Rate of Male' (compared to the past 12 month period)



3. Inflation Rate of Male' (month on month): May'12 / May'11

To measure the month on month change at one point in time, the index of the month is compared with that of the same month in the preceding year (Eg: May'12 / May'11). The month on month index for May shows an inflation of 9.13% and the inflation excluding fish is 8.99%.

Figure 9. Month on Month inflation Rate of Male' (compared to the same month of the previous year)



CONSUMER PRICE INDEX - MALE'

Department of National Planning
Ministry of Finance and Treasury

May 2012

Consumer Price Index-Male' May 2012

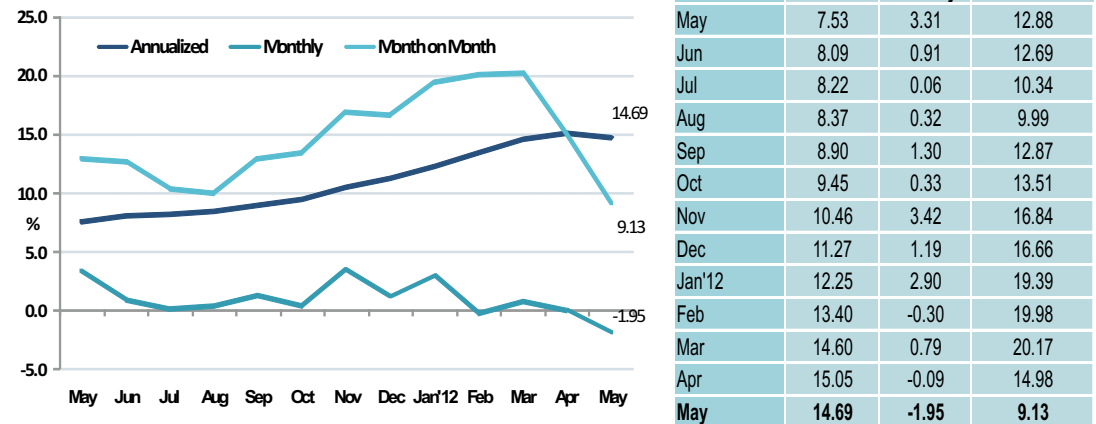
Inflation Rate of Male'

The Consumer Price Index (CPI) for Male' rose at an annualized rate of 14.69 percent in May 2012. The inflation was driven mainly by furnishing household equipment, food & beverages and miscellaneous goods & services.

Monthly CPI of May 2012 decreased by 1.95 percent compared to April 2012. The deflation was mainly driven from fish, housing, water, electricity & other fuels followed by miscellaneous goods & services categories.

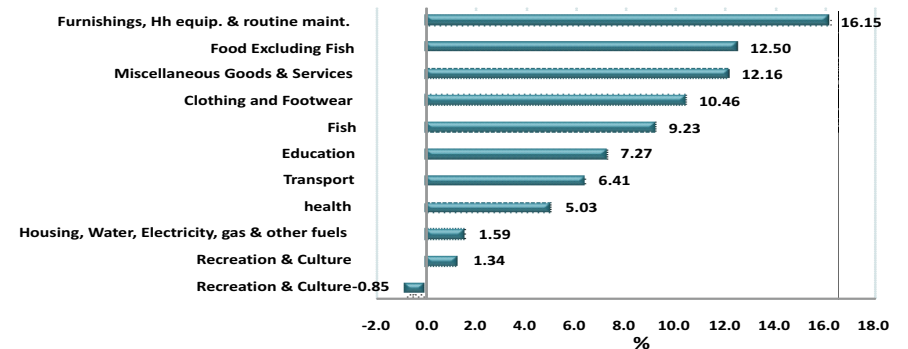
When May 2012 is compared to May 2011, the consumer price index increased by 9.13 percent. Tobacco category showed the highest inflation followed by hotel, cafes & restaurants and furnishing household equipment & routine maintenance categories.

Figure 1: Inflation rates of Male', May-2012



Sources of changes in CPI - Annualized

Figure 2: Sources of changes in May CPI - Annualized



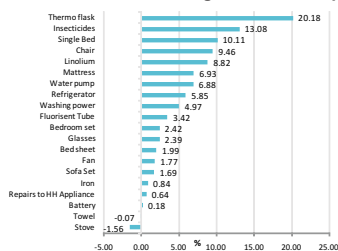
Major contributors to the change in the CPI - Annualized basis

The largest upward contribution to the change in the annual CPI came from furnishing, household equipments & routine maintenance which contributed 16%. Among this category, linoleum and bedroom set increased significantly by 66% and 53% respectively during this period. Sofa set and mattress prices went up by 40% and 39% respectively. Refrigerators, insecticides prices went up by 32% and 27% respectively. Additionally, drinking glasses, light tube, single bed and water pump also contributed to this hike.

The second largest upward contribution to the change in annual CPI came from food & beverages category which contributed 13%. Dried chilli prices went up by 55%. Milo prices went up by 47% while both coca-cola and apollo prices went up by 45% and canned pineapple and frozen chicken prices went up by 43% and 41% respectively. Other items in this category which showed a price increase above 30% were chicken drumsticks, cooking oil, tea bags, frozen beef, condensed milk, dairy milk, watermelon, milk powder, biscuits, chilli sauce, curry powder and tomato sauce. Items which registered a price increase between 25% and 30% were baby milk powder, coffee, condensed milk, chilli & garlic sauce, chilli powder, nestum and margarine. In addition to this, aracanut prices went up by 93%, and cigarette price by 62%. On the other hand, garlic and ginger prices decreased by 43% and 28% respectively. Mango and onion prices decreased by 28% and 25% respectively. Addition to this, green chilli prices decreased by 22% while coconut and githeyo mirus (local chilli) prices also decreased by 21% and 16% respectively.

The third largest upward contribution to the change in the annualized CPI came from miscellaneous goods & service category by 12%. Men haircut prices contributed highest to inflation of this category with 65%, while baby cologne prices increased by 55%. Cosmetic treatment prices also contributed 28% to inflation of this category. Additionally shampoo, hair cream, cologne, soap and facial cream prices contributed to inflation of this category.

Figure 3: Products contributing to the inflation: Furnishing, household equipments & routine maintenance - Annualized



Change in the CPI - Month on Month

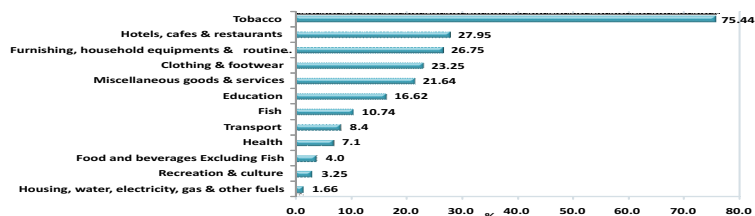
When May 2012 was compared to May 2011 all the major categories recorded an inflation. Tobacco showed the highest inflation with 75% followed by hotels, cafes & restaurants at 28%. The third highest category was furnishing, household equipments & routine maintenance which registered 27%.

As for tobacco category, on average cigarette prices increased by 86% when compared to May 2011. This is due to the increase in import duties on these products on 1 December 2011. Additionally aracanut prices went up by 31% when the two point of time were compared.

As for hotels, cafes & restaurants category, on an average restaurant meals prices went up by 23%. Additionally both breakfast meals and pizza prices went up by 15%.

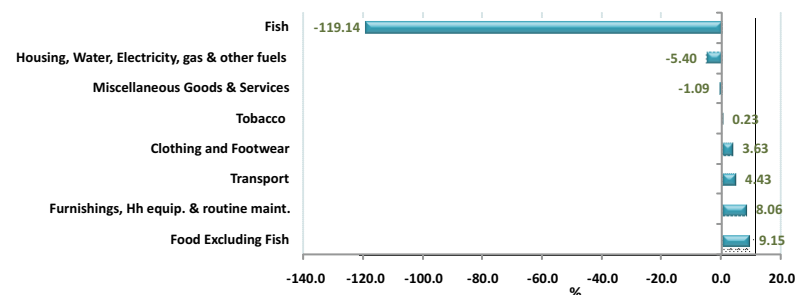
For the furnishing, household equipments & routine maintenance category, bedroom set prices increased significantly by 93%. Additionally both sofa set and mattress prices went up by 70% and refrigerator and insecticides prices went up by 56% and 50% respectively compared to May 2011.

Figure 4: Inflation Rates by Major sectors - Month on Month basis



Main contributions to the change in the CPI - Monthly basis

Figure 5: Sources of changes in May 2012 CPI - monthly



Fish category pulled down the monthly inflation most by contributing -119% to the inflation. Housing, water, electricity, gas & other fuels also pulled down the overall inflation by -5%, where as food & beverages excluding fish category pulled up the overall monthly inflation by 9% followed by furnishing, household equipments & routine maintenance category which contributed 8% to the inflation.

As for housing, water, electricity, gas & other fuels category electricity prices decreased by 5% due to the decrease in fuel surcharges applied to electricity.

In furnishing, household equipments & routine maintenance category, single bed sheet and plastic chair prices increased by 17% and 13% respectively while gas stove prices also increased by 11% in May 2012.

Transport category also pulled up the overall inflation by 4%. Within this category, international airfare prices went up by 6% compared to April 2012. However, petrol prices declined by 0.14% compared to last month.

In the clothing & footwear category, sandals and men's t-shirt & shirt registered a price increase in May.

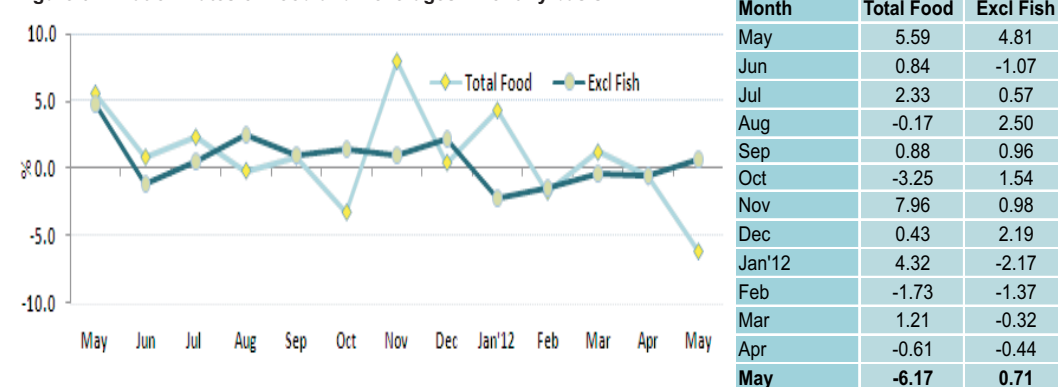
Monthly inflation rate of food and beverages category

The monthly inflation rate for the food & beverages category is -6.17%. Food excluding fish category showed an inflation of 0.71%

As for food category, potato and orange prices increased by 34% and 30% respectively in May compared to last month. Additionally green chilli and both cabbage and banana prices increased by 21% and 13% respectively. Watermelon, cucumber, tomato, apple, cornflakes and onion prices increased in May. However, item such as cooking oil, garlic, lemon, frozen chicken and carrot prices decreased during the month.

Other tuna and skipjack tuna prices decreased by 35% and 33% respectively in May. This decrease was the major factor contributing to the decline in fish index. Additionally smoked fish prices decreased by 7% in May. However, reef fish prices increased by 22%.

Figure 6: Inflation Rates of Food and Beverages - Monthly basis



Annex 1: Average Prices of Items which showed a significant change, CPI Male', May 2012

Description	Specification	Unit	Annualized			Monthly		Month on Month		
			Average 12 monthly Price			Average Price		% Chn	Av Price	% Chn
			Jun2010- May2011	Jun 2011- May2012	% Chn	Apr-12	May-12	April 2012 / May 2012	May-11	May 2011/ May 2012
Food										
Biscuits	Cream Cracker, Khong Guan	200 gram, packet	9.41	12.49	32.64	13.37	13.14	-1.70	11.20	17.35
Biscuits	Marie Biscuit	400 Gram	15.78	20.78	31.69	21.89	22.09	0.87	15.63	41.34
Bread	Small Bread	1 Piece	10.57	12.43	17.56	12.54	12.54	0.00	12.31	1.81
Bread	Large	1 Piece	20.73	23.25	12.15	23.34	23.25	-0.38	23.30	-0.21
Bread spread	Chocolate Crimpy	225 Gram	36.47	38.82	6.46	42.52	43.85	3.14	35.94	22.00
Butter bun	butter buns / Packed	1 Piece	3.58	4.08	13.87	4.16	4.16	0.00	3.97	4.78
Bun	Small Buns/ Un packed	1 Piece	0.46	0.56	20.47	0.54	0.54	0.00	0.56	-2.54
Rice-Basmati	Basmati Rice / Pre Packed	1 kg	26.56	26.33	-0.86	28.28	28.40	0.41	25.25	12.46
Rice	Ordinary Rice / loose	1 kg	4.70	4.51	-4.09	4.57	4.62	1.25	4.60	0.50
Flour	Ordinary Flour / loose	1 kg	3.92	3.61	-7.93	3.70	3.84	3.75	3.57	7.66
Noodles	Mamee Noodles / Packet	85 Gram	3.54	4.16	17.58	4.14	4.14	0.00	3.91	5.67
Corn flake	Kellogg's / Wheat and Honey	300 Gram	42.83	42.88	0.13	44.64	46.83	4.90	41.00	14.21
Chicken sausage	Chicken Sausage / Packed	340 Gram	17.29	21.43	23.94	20.52	20.16	-1.76	21.00	-3.99
Chicken drumsticks	Chicken drumstick	1 kg	52.35	72.59	38.67	69.10	67.85	-1.80	56.22	20.68
Frozen chicken	Frozen chicken / Whole chicken / Pre p	1 kg	38.92	54.96	41.21	52.79	49.99	-5.32	44.15	13.22
Egg	Chicken egg / Imported	1 Piece	1.52	1.73	13.52	1.52	1.55	2.55	1.71	-9.09
Frozen beef	Frozen Beef	1 kg	49.05	66.61	35.79	69.51	70.02	0.74	51.36	36.34
Baby food - cereal	Nestum / Wheat & Honey	250 Gram / Tin	37.71	47.63	26.33	50.82	49.60	-2.40	43.63	13.69
Baby food - cereal	Promina / Banana	250 Gram / Packet	16.88	19.76	17.03	20.61	20.56	-0.25	17.07	20.45
Baby food - fruit	Purity / Fruit / Second food	200ml, Bottle	21.17	24.63	16.33	26.41	26.94	2.01	24.10	11.80
Baby milk powder	Lactogen	450 Gram, tin	64.97	72.12	10.99	73.41	73.55	0.19	67.56	8.87
Baby milk powder	Anflace	450 Gram / Tin	130.80	169.10	29.28	169.83	169.83	0.00	136.80	24.15
Baby milk powder	S.M.A / Progress	450 Gram / Tin	109.87	122.81	11.78	122.83	123.05	0.18	106.25	15.81
Milk powder	Coast	1800 Gram, tin	203.98	251.96	23.52	247.58	243.87	-1.50	228.75	6.61
Milk powder	Anchor Milk	1800 Gram / tin	209.50	272.54	30.09	276.24	278.25	0.72	243.67	14.19
Milk powder	Nido	1800 Gram / Tin	199.14	264.66	32.90	264.89	267.86	1.12	260.00	3.02
Condensed milk	Double Peach	397Gram, tin	11.61	14.97	28.89	15.27	15.26	-0.02	12.30	24.09
Condensed milk	Cow Bell	397 Gram / Tin	10.92	14.78	35.37	14.72	15.27	3.72	11.57	31.96
Dairy milk	Dutch Lady / Milk Pack / Small	250 ml	7.16	9.58	33.88	9.70	9.70	0.00	7.97	21.72
Margarine	Daisy brand tub / Small	250 Gram	20.56	25.81	25.54	27.01	27.16	0.57	23.10	17.57
Cooking oil	Bemoli Oil	2 Ltr	49.21	64.71	31.48	58.87	57.42	-2.46	66.08	-13.11
Cooking oil	Sun Flower Oil	2 Ltr	74.13	101.59	37.04	102.08	91.51	-10.35	87.50	4.58
Apple	Apple	1 Piece	5.03	5.35	6.31	5.54	5.84	5.38	5.28	10.64
Banana	Bonthirai	1 Piece	2.16	2.21	2.24	2.19	2.47	13.13	1.95	26.81
Orange	Fresh Orange	1 Piece	3.92	3.87	-1.38	3.58	4.64	29.85	5.31	-12.46
Watermelon	Water melon (fresh Locally produced)	1 kg	15.94	21.23	33.14	22.97	25.85	12.54	14.50	78.29
Canned mixed fruits	Canned Mixed Fruit / Small	398 Gram	26.16	29.60	13.14	28.20	28.20	0.00	31.67	-10.95
Canned pineapple	Canned Pineapple	567 Gram	15.29	21.90	43.25	22.64	23.08	1.92	16.00	44.22
Mango	Fresh / local / Mango	1 Piece	10.06	7.25	-27.95	9.00	9.00	0.00	-	-
Dates	Dates without nuts	200 Gram /pack	31.61	30.76	-2.70	35.09	35.09	0.00	-	-
Coconut	Medium size / Coconut	1 Piece	6.69	5.27	-21.15	4.43	4.39	-0.95	8.33	-47.31
lemon	Imported lemon	1 Piece	1.88	2.10	11.91	2.39	2.25	-5.74	2.10	7.11
Green chili	Green Chili / Imported	100 Gram	9.56	7.47	-21.83	6.80	8.19	20.52	6.25	31.04
Githayo Mirus	Dhivehi mirus	1 Piece	3.28	2.75	-16.31	2.70	2.62	-3.07	2.75	-4.91
Mixed fresh vegetables	Mixed Vegetables	1 kg	43.04	41.01	-4.71	40.76	42.57	4.45	50.60	-15.87
Tomato	Fresh Tomato	1kg	30.90	33.47	8.32	29.40	31.98	8.78	30.10	6.26
Cucumber	Fresh Cucumber	1 kg	29.61	30.41	2.72	33.41	36.94	10.56	28.10	31.46
Carrot	Fresh Carrot	1 kg	26.83	28.69	6.94	26.54	25.34	-4.53	35.06	-27.73
Cabbage	Fresh Cabbage	1 kg	28.80	30.10	4.50	29.33	33.23	13.31	28.80	15.38
Beans	Fresh Beans	1 kg	51.00	56.16	10.12	54.39	53.38	-1.85	56.50	-5.51
Garlic	Garlic	100 Gram	7.43	4.25	-42.82	4.17	3.80	-8.88	11.15	-65.94
Ginger	Ginger	100 Gram	5.70	4.11	-28.02	4.04	3.90	-3.38	4.99	-21.87
Potato	Imported Potato	1 kg	12.54	12.49	-0.38	9.31	12.47	33.95	11.95	4.34
Canned baked beans	Baked Beans / Canned	400 Gram	11.15	13.63	22.25	14.43	14.32	-0.77	12.29	16.58
Canned green peas	Green peas / Processed peas / Canned	440 Gram	8.43	10.41	23.38	11.36	11.54	1.62	8.89	29.86
Dhal	Yellow Colored Dhal	1 kg	44.20	47.57	7.62	48.92	48.39	-1.09	46.25	4.63
Salt	Fine Salt / Packed	500 Gram	4.67	5.10	9.18	5.29	5.12	-3.16	4.83	6.13
Sugar	Dhoabraali Hakuru	1 kg	4.73	4.53	-4.12	4.53	4.56	0.62	4.50	1.42
Curry powder	Curry Powder / Antelope brand / Canned	340 Gram	30.82	40.18	30.35	42.15	42.47	0.76	31.29	35.75
Curry powder	Fish curry powder / Packed locally	50 Gram	5.14	6.60	28.44	6.77	6.88	1.64	5.63	22.30
Curry powder	Chicken curry powder / Packed locally	50 Gram	5.12	6.70	30.90	6.92	7.13	3.10	5.63	26.76
Dried Chili	Dried Chili (Hikimirus) / Loose	1 kg	53.36	82.86	55.28	92.48	92.48	0.00	60.00	54.14
Chilli powder	Chilli Powder / Packed Locally	50 Gram	5.11	6.58	28.74	6.80	6.90	1.47	5.58	23.58
Onion	Imported Onion	1 kg	19.08	14.34	-24.85	9.71	10.15	4.48	13.73	-26.07
Tea leaves-tea bag	Today's Taste / 100 tea bag	200 Gram	25.22	33.35	32.23	34.27	34.56	0.85	26.88	28.60
Tea leaves-tea bag	Melesna / 100 tea bag	200 Gram	26.43	39.54	49.60	44.93	44.93	0.00	33.00	36.15
Tea leaves-tea bag	Akbar / 100 tea bag	200 Gram	25.35	34.71	36.95	35.08	35.42	0.96	29.25	21.08
Tea leaves-loose	Ceylon Tea Leaves (loose)	1 kg	42.29	47.39	12.06	47.12	47.12	0.00	45.00	4.70
Coffee	Nescafe, Cafe' soluble coffee / Canned	50 Gram	31.39	40.54	29.15	42.15	42.00	-0.35	34.89	20.38
Juice-Sun quick	Sun quick / Orange Juice / Bottled	840 ml	56.87	70.52	24.00	73.38	74.98	2.18	62.39	20.18
Juice-Foster Clark	Foster Clark / Powdered Juice / Bottled	750 Gram	54.99	64.88	17.99	65.99	66.46	0.70	59.75	11.23
Milo	Nestle Milo Powder / Canned	400 Gram	55.13	80.78	46.52	86.14	86.14	0.00	68.67	25.45
Apollo	Milk Chocó / Wafer cream	1 Piece	1.40	2.03	44.59	2.28	2.28	0.00	1.69	35.33
Candy	Solano	1 Piece / 25 Gram	0.44	0.42	-4.01	0.32	0.31	-0.53	0.36	-13.92
Ice cream	Chocolate Ice cream / Tub	1 Ltr	46.62	57.74	23.84	65.29	65.18	-0.16	47.81	36.33
Coke	Dubai coke / Canned	300 ml	7.24	10.48	44.82	11.21	10.95	-2.25	8.79	24.67
Coke	Coca Cola / Large Bottle	1500 ml	24.36	29.28	20.20	30.10	30.35	0.83	27.50	10.35
Aracanut	Raw Aracanut / Uncut / Loose	1 kg	51.77	100.01	93.17	90.03	91.46	1.60	70.00	30.66
Cigarette	Marlboro	20 Piece / 1 Pack	19.84	31.40	58.31	38.66	38.66	0.00	20.83	85.55
Cigarette	Benson	20 Piece / 1 Pack	18.94	31.40	65.85	38.66	38.66	0.00	20.83	85.55
Saltish short-eats	Handulu gulha	1 Piece	1.42	1.44	1.67	1.17	1.17	0.00	2.00	-41.67
Sweet short-eats	Foni folhi	1 Piece	2.00	2.24	12.07	2.37	2.37	0.00	2.00	18.67
Jam	Tova Brand / Bottle	450 Gram	22.38	24.33	8.68	25.38	25.24	-0.54	23.00	9.75
Tomato paste	Tomato Paste / Small can	70 Gram	2.49	2.83	13.75	2.94	3.01	2.49	2.64	14.01
Sauce	Tomato Sauce / life Brand	320 Gram / Bottled	10.26	13.33	29.98	15.07	15.60	3.51	11.00	41.81
Sauce	Chili Sauce / life Brand	335 Gram / Bottled	11.34	15.04	32.63	16.82	16.66	-0.96	12.56	32.60
Sauce	Chili & Garlic Sauce / life Brand	320 Gram / Bottled	12.34	15.88	28.74	17.22	17.11	-0.69	13.67	25.16

Description	Specification	Unit	Annualized			Monthly		Month on Month		
			Average 12 monthly Price			Average Price		% Chn	Av Price	% Chn
			Jun2010- May2011	Jun 2011- May2012	% Chn	Apr-12	May-12	April 2012 / May 2012	May-11	May 2011/ May 2012
Fish										
Canned fish in oil	Felivaru canned fish / Chunk in Oil	185 Gram	15.72	18.17	15.61	18.16	18.22	0.38	16.88	7.99
Canned fish in brine	Felivaru Canned Fish / Chunk in Brine	185 Gram	14.16	16.98	19.90	16.95	17.29	2.01	15.82	9.31
Dried fish chips	Pre packed Dried fish chips	100 Gram	10.45	13.71	31.20	12.73	12.73	0.00	10.67	19.30
Smoked fish	Smoked Fish (Valhoamas) / Loose	1 kg	64.16	127.03	97.97	142.39	132.36	-7.04	87.17	51.84
Skipjack tuna	Godha / Kalhubilamas	1 kg	33.17	69.41	109.23	93.03	61.97	-33.39	56.88	8.95
Other tuna	Other Tuna / Latti	1 kg	23.54	69.72	196.16	94.77	61.82	-34.77	39.83	55.21
Reef fish	Reef Fish / Maaniya mas	1 kg	20.05	33.57	67.48	17.67	21.56	22.01	28.59	-24.59
Clothing and Footwear										
Mens t-shirt	Men Shirt / Most Sold Brand	1 Piece	157.64	176.21	11.78	186.13	194.97	4.75	175.00	11.41
Men's shirt	Men T-Shirt / Most Sold material	1 Piece	169.65	206.23	21.56	219.95	233.20	6.02	180.00	29.56
School uniform	School Uniform / Boys / Medium size 1-1	1 Piece	60.79	117.16	92.72	121.90	121.90	0.00	102.50	18.93
Men's trousers	Men's Trousers / Long	1 Piece	184.72	224.34	21.45	229.60	229.60	0.00	220.00	4.36
Men's jeans	Mend's Jeans / Most Sold Material	1 Piece	222.08	274.49	23.60	295.43	295.43	0.00	243.33	21.41
Women's jeans	Women's Jeans / Fade	1 Piece	203.89	214.91	5.41	225.77	227.83	0.92	201.67	12.98
Women's t-shirt	Ladies T - shirt / Most sold Brand	1 Piece	153.06	187.67	22.61	191.03	191.03	0.00	166.67	14.62
Dress material	Most often sold material / Plane / Faatu	1 Muh	25.08	32.93	31.28	39.04	39.04	0.00	26.00	50.14
School shoes	School Shoes/ Girl / Most recently sold	1 Pair	138.47	178.06	28.59	188.50	188.50	0.00	145.00	30.00
Nylon faivaan	Size 10	1 Pair	12.50	13.82	10.54	14.20	14.20	0.00	13.75	3.30
Men's shoes	Office Shoes	1 Pair	257.50	327.58	27.21	383.69	387.32	0.95	245.00	58.09
Men's sandals	Most recently sold brand	1 Pair	150.00	186.98	24.66	196.83	196.83	0.00	145.00	35.75
Women's sandals	Casual (home-wear)	1 Piece	137.92	177.81	28.93	200.00	219.73	9.87	145.00	51.54
Housing										
Kerosene oil	Kerosene oil	1 Ltr	11.79	16.04	36.03	16.56	16.56	0.00	12.00	38.00
Cooking gas	Cooking gas / Excluding Transport cost	13 Kg	303.83	385.00	26.71	390.00	390.00	0.00	390.00	0.00
Cement	Cement bag	50 kg	81.00	104.64	29.18	122.00	122.00	0.00	82.50	47.88
Plywood	3 mm	1 Piece	113.76	137.46	20.83	166.82	166.82	0.00	126.67	31.70
Paint	Wall Paint	5 litre	170.92	185.68	8.64	198.53	198.53	0.00	175.00	13.44
Roofing sheet	0.6 mm / 1 feet	1 Piece	26.06	27.73	6.38	30.24	30.24	0.00	28.00	8.00
Furnishing										
Bedroom set	1 Queen size bed / dressing table / cup	1 Set	6,177.08	9,425.33	52.59	9,487.00	9,487.00	0.00	6,100.00	55.52
Single bed	Single bed / With fancy Plywood	1 Piece	1,606.25	1,977.81	23.13	2,385.00	2,385.00	0.00	1,650.00	44.55
Mattress	Single / kurlon or Temptation	1 Piece	2,372.08	3,303.94	39.28	3,420.00	3,420.00	0.00	2,700.00	26.67
Chair	Plastic Chair / large / without handle	1 Piece	130.00	142.91	9.93	154.48	175.00	13.29	130.00	34.62
Sofa Set	Sofa set / Plywood with sponge cushion	1 Piece	5,602.08	7,817.44	39.55	8,427.00	8,427.00	0.00	4,950.00	70.24
Linoleum	Aadhaige Tharafaalu (linoleum)	1 Feet	8.88	14.74	66.04	16.43	16.43	0.00	8.50	93.29
Bed sheet	Single Bed sheet / Ordinary brand	1 Piece	41.64	48.88	17.40	54.34	63.85	17.50	42.50	50.24
Refrigerator	Forest free Refrigerator / 50 kg/ Hitach	1 Piece	4,368.00	5,753.74	31.72	7,546.31	7,546.31	0.00	4,432.00	70.27
Fan	Electric fan (Ceiling) / Usha Brand / 43	1 Piece	453.44	499.31	10.12	514.51	514.51	0.00	445.00	15.62
Sewing machine	Sewing Meching / With 21 Design / Bro	1 Piece	5,187.50	5,632.50	8.58	5,692.50	5,692.50	0.00	5,500.00	3.50
Water pump	Pedroler Water Pump / 1 inches	1 Piece	2,807.00	3,396.08	20.99	3,933.00	3,933.00	0.00	2,950.00	33.32
Battery	"D" Size Battery / 555 Brand	1 Piece	3.00	3.49	16.45	3.67	3.72	1.23	3.00	23.89
Washing power	Soklin Brand Washing powder Pack	1 Kg	22.42	22.14	-1.26	23.97	23.47	-2.10	19.67	19.33
Washing power	B 29 Brand Washing powder Pack	1 Kg	18.96	22.08	16.41	24.33	23.78	-2.23	19.00	25.18
Insecticides	Insecticides / Mosfly Brand / Small Bott	400 MI	32.49	41.22	26.88	43.32	43.41	0.21	30.60	41.86
Light tube	Fluorescent tube / 2 feet / White Color	1 Piece	11.53	14.36	24.55	17.27	15.97	-7.57	10.67	49.69
Glasses	Plain Glass / Medium Size	1 Piece	5.87	7.36	25.35	7.99	7.62	-4.71	7.50	1.57
Health										
Forcevel	Forcevel / 500 mg	1 Tablet	3.45	3.92	13.47	4.00	4.00	0.00	4.00	0.00
Vicks balm	Vicks Balm / 19 Gram	1 Bottle	10.75	13.29	23.64	14.67	14.83	1.14	11.00	34.85
Helibo orange	Helibo Orange / 200 ml	1 Bottle	42.30	56.14	32.72	58.75	58.75	0.00	48.00	22.40
Diegen	Diegen / 200 ml	1 Bottle	26.18	35.79	36.69	39.29	39.29	0.00	25.00	57.15
Vitamin C	Vitamin C / 500 mg	1 Tablet	0.76	0.99	30.66	1.00	1.00	0.00	1.00	0.00
Doctor's consulting fee-ge	consultation fee / General Doctor	Per Patient	81.25	89.06	9.62	100.00	100.00	0.00	81.25	23.08
Doctor's consulting fee-spi	Doctor consultation fee / Specialist	Per Patient	125.42	169.03	34.77	191.67	191.67	0.00	150.00	27.78
Dental service (ordinary fil	Dental Service / Ordinary Filling	Per Patient	216.67	226.39	4.49	300.00	300.00	0.00	216.67	38.46
Ultra sonogram test	Ultra Sound Scan / Hole Abdomen	Per test	483.33	525.56	8.74	533.33	533.33	0.00	520.00	2.56
Chest x-ray	Chest x-ray	Per test	109.36	145.28	32.84	175.00	175.00	0.00	125.67	39.26
Transport										
Motorcycle	Honda Wave 125 I	1 Piece	45,408.33	54,110.50	19.16	57,028.00	57,028.00	0.00	49,900.00	14.28
Motorcycle	Honda Wave 125 H	1 Piece	40,108.33	47,790.67	19.15	50,456.00	50,456.00	0.00	44,800.00	12.63
Bicycle	Mountain	1 Piece	1,122.92	1,251.73	11.47	1,298.50	1,298.50	0.00	1,050.00	23.67
Cleaning of motorcycle	Full cycle	Per vehicle	70.00	79.21	13.16	82.50	82.50	0.00	70.00	17.86
Petrol	1 Ltr	1 Ltr	11.96	16.01	33.81	16.54	16.52	-0.14	16.19	2.04
International airfare	Male/Colombo/male'	Per Person	4,087.79	5,255.64	28.57	5,157.99	5,498.93	6.61	5,000.50	9.97
Domestic airfare	Male/Gan/Male'	Per Person / Adult	2,849.33	3,310.55	16.19	3,392.00	3,392.00	0.00	3,206.00	5.80
Domestic airfare	Male/Hanimadho/Male'	Per Person / Adult	2,207.67	2,586.10	17.14	2,650.00	2,650.00	0.00	2,506.00	5.75
Domestic airfare	Male/Kade/dhoo/ Male'	Per Person / Adult	2,528.50	2,948.75	16.62	3,021.00	3,021.00	0.00	2,856.00	5.78
Domestic airfare	Male/Kah'dhoo/male'	Per Person / Adult	2,207.67	2,586.10	17.14	2,650.00	2,650.00	0.00	2,506.00	5.75
Recreation										
Aerobics	1 hr class / 3 classes per week	Per Month	293.75	354.31	20.62	371.00	371.00	0.00	320.00	15.94
Recordable CD	Recordable CD / Blank CD	1 Piece	4.43	4.23	-4.54	4.81	4.81	0.00	3.50	37.35
Monitor book	Exercise Book / 200 Pages	1 Book	13.76	15.51	12.74	16.93	17.08	0.87	12.40	37.71
Color box	Swan Brand / Small Size / 12 Color	1 Box	20.45	23.32	14.02	29.62	29.90	0.95	21.20	41.06
Glaze paper	Glaze Paper	1 Piece	1.26	1.69	34.81	1.81	1.79	-1.16	1.29	39.22
Hotels, cafés and Restaurants										
Meals (lunch packet)	4 roshi / 1fish curry / 1 black tea / 1 dh	Per person	17.08	22.77	33.29	23.32	23.32	0.00	18.00	29.56
Meals (lunch packet)	4 roshi / 1 chicken curry / 1 black tea /1	Per person	22.75	37.69	65.69	39.00	39.00	0.00	39.00	0.00
Pizza	Tuna Mushroom	whole pizza	65.97	84.23	27.68	90.03	90.03	0.00	78.33	14.94
Restaurant meals	Fish & Chips	1 plate	47.29	56.43	19.32	62.87	62.87	0.00	50.00	25.73
Restaurant meals	Nasi Goreng	1 plate	51.00	61.84	21.25	66.67	66.67	0.00	55.00	21.21
Miscellaneous										
Cosmetic treatment	Cosmetic Treatment / Eye brought	Per time	30.00	38.42	28.06	50.00	50.00	0.00	30.00	66.67
Haircut-female	Female Hair Cut	Per Person	125.00	150.44	20.35	161.33	161.33	0.00	150.00	7.56
Haircut-men	Male Hair Cut	Per Person	32.36	53.25	64.54	59.75	59.75	0.00	38.33	55.87
Baby diapers	Huggies / Small Size	1 Packet	127.34	144.43	13.42	149.52	150.02	0.33	135.00	11.12
Sanitary pads	Stay Free	1 Packet	12.96	14.90	14.96	16.28	16.28	0.00	13.80	17.97
Sanitary pads	Riaa	1 Packet	17.93	13.63	-23.98	13.87	14.07	1.50	15.00	-6.17

Description	Specification	Unit	Annualized			Monthly			Month on Month	
			Average 12 monthly Price			Average Price		% Chn	Av Price	% Chn
			Jun2010- May2011	Jun 2011- May2012	% Chn	Apr-12	May-12	April 2012 / May 2012	May-11	May 2011/ May 2012
Soap	Lux Soap	100 Gram	4.63	5.71	23.28	6.70	6.85	2.27	4.61	48.51
Baby soap	Johnson Baby Soap	100 Gram	8.34	10.17	21.94	10.68	10.68	0.00	9.86	8.34
Facial cream	Fair & Lovely / Facial Cream	25 Gram	16.29	19.93	22.32	24.03	23.64	-1.64	16.67	41.84
Baby lotion	Johnson & Johnson Baby Lotion	200 MI, bottle	29.96	34.45	14.98	36.00	36.03	0.08	31.88	13.03
Body lotion	Nivea Lotion	200 MI	41.43	45.65	10.20	44.69	44.69	0.00	42.33	5.58
Body lotion	Enchanteaur Lotion	200 MI	31.49	34.00	7.99	36.61	36.52	-0.24	27.43	33.15
Baby cologne	Baby Cherymy Cologne	175 ml	21.47	33.24	54.79	35.84	33.47	-6.61	29.67	12.83
Baby cologne	Johnson & Johnson Colone	175 ml	20.68	22.01	6.46	22.82	22.82	0.00	19.60	16.43
Cologne	Splash	200 MI	19.42	23.84	22.73	24.55	24.67	0.50	19.88	24.13
Cologne	Loviline	175 ml	20.93	27.44	31.13	27.65	27.06	-2.12	21.83	23.94
Hair cream	Max	175 ml	26.65	33.23	24.65	34.99	35.02	0.10	30.43	15.10
Hair cream	Elite	175 ml	25.26	34.98	38.50	36.57	36.57	0.00	32.40	12.86
Hair cream	Gatsby	175 ml	21.53	21.30	-1.03	22.81	22.81	0.00	17.50	30.31
Shampoo	Emerone	200 MI	17.08	24.51	43.46	25.81	25.77	-0.17	20.57	25.25
Shampoo	Head & shoulders	200 MI	31.53	39.47	25.18	38.69	38.28	-1.05	33.25	15.13
Shampoo	Pantene Pro vitamin	200 MI	29.33	34.53	17.73	36.71	36.38	-0.91	28.40	28.08
Toothpaste	Aqua fresh,	50 MI	14.48	15.44	6.60	15.22	15.87	4.25	14.88	6.69

