

Leave no one  
behind-

# CHILDREN IN MALDIVES

## USING CENSUS 2022

MALDIVES BUREAU OF STATISTICS  
MINISTRY OF HOUSING, LAND & URBAN DEVELOPMENT



MALDIVES  
BUREAU OF  
STATISTICS

unicef   
for every child



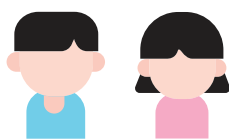
# LEAVE NO ONE BEHIND

## Children in Maldives



MALDIVES  
BUREAU OF  
STATISTICS

unicef  
for every child



**119,159**

Children

Children accounts for  
**31%** of the population.



In Maale, children account to 28% of the population while one third of the population living in Atolls are children.

The share of child population among resident Maldivian is highest in B. Kihaadhoo, followed by AA.Ukulhas.

The child population in Maldives has shown significant changes over the years. In 1990, children accounted to more than half of the population. Since then, children have decreased as a proportion of the total resident Maldivian population. In 2022 child population constitute 31% of the population, down from a peak of 53%.



Children under 1 year has shown a gradual decrease from 2% to 1%.



Children under 5 years have shown a fluctuation going from 11% to 9% and again from 11% to 8%.

Children under 18 years used to account to half of the population (48%). Today, children share in the population has decreased from 48% to 31%.

### CHILD & ELDERLY DEPENDENCY RATIO, 1990-2022

1990

**98**

people depending on 100 people of working age group

2022

**47**

people depend on 100 people of working age group

#### Sex Ratio at Birth

Census 2022 showed there are 103 boys to 100 girls being born. Census 2014 showed a deviation from the normal range, which recorded the highest increase in SRB.

# LEAVE NO ONE BEHIND

## Children in Maldives



MALDIVES  
BUREAU OF  
STATISTICS

unicef  
for every child



**3,401**

Children with Disability

Prevalence of disability  
among children  
(5-17 years)



**4%**

Disability prevalence  
rate is among  
children.



More boys (**632**) than  
girls (**385**) experience  
multiple disability.

### PREVALENCE OF DISABILITY AMONG CHILDREN BY AGE, 2022



**3.8%**

children  
between  
5-10 years

The highest rate of disability is observed among those elder children with 12-year-old children recording the highest prevalence of disability.

### PREVALENCE OF DISABILITY BY TYPE



At national level, children face difficulty mostly in seeing followed by difficulty in communicating and self-care.



In Maale, majority of the children face difficulty in remembering and communicating.



In Atolls, children face disability in seeing, remembering and communicating.

### PREVALENCE OF DISABILITY BY TYPE



**687 (1%)**

Children with  
severe disability

### MULTIPLE DISABILITY AMONG CHILDREN



**1,017 (1%)**

Children face  
multiple disability

# LEAVE NO ONE BEHIND

## Children in Maldives



### LIVING ARRANGEMENT OF CHILDREN UNDER 18 YEARS (0-17 YEARS)



**74%**  
reside with both  
parents



**22%**  
reside with one  
parent



**2%**  
reside without any  
parent

### LIVING ARRANGEMENT OF CHILDREN UNDER 18 YEARS (0-17 YEARS)

Children residing with both  
parents by locality



**79%**  
Maale



**71%**  
Atolls

### CHILDREN LIVING WITH ONE, BOTH, OR NO PARENTS BY LOCALITY



**ATOLLS**

Higher single-parent  
households (26%)  
compared to Maale  
(15%)



**MAALE**

Slightly higher  
proportion living  
without parents (3%)  
compared to Atolls  
(2%)

### CHILDREN LIVING WITH NO PARENTS



Across various Atolls,  
0.9% to 3.3% of children  
live without parents



Potential correlation  
observed between child  
migration rates and  
children living without  
parents.

### RATES OF CHILDREN IN JOBLESS HOUSEHOLDS



**8%**  
children reside in jobless  
households



**5%**  
Maale



**11%**  
Atolls

### HOUSEHOLD COMPOSITION OF POPULATION BELOW 18

Majority reside  
in regular  
households  
**(99%)**

# LEAVE NO ONE BEHIND

## Children in Maldives



MALDIVES  
BUREAU OF  
STATISTICS

unicef  
for every child

### LITERACY AMONG CHILDREN



**99%**  
proficiency in Dhivehi  
language among  
children aged 10 to 17.



**98%**  
proficiency in English  
language among  
children aged 10 to 17.

### CHILDREN CURRENTLY STUDYING



**91%**

Children aged 2 to 17 are engaged in some form of study, with higher participation among girls compared to boys.

Attendance rates vary across age groups, with full participation during early childhood and primary education, declining during adolescence.

### CHILDREN'S CURRENT ATTENDANCE BY DISABILITY STATUS



Almost 100% attendance is observed among children without disabilities, while children with disabilities face challenges, particularly at age 13.

### GENDER PARITY INDEX (GPI)

GPI below 1 favors boys, above 1 favors girls, close to 1 signifies balanced access.

#### PRIMARY EDUCATION

Slight favor towards boys (0.95), consistent over years.

#### LOWER SECONDARY EDUCATION

Worsening gender disparity favoring boys (0.98 to 0.93).

#### HIGHER SECONDARY EDUCATION

Shifting towards favoring girls (1.00 to 1.15).

### MODE OF STUDY AMONG CHILDREN CURRENTLY STUDYING

The Maldivian education system encompasses diverse learning opportunities, including formal schooling, college/universities, and alternative modes like homeschooling.

# LEAVE NO ONE BEHIND

## Children in Maldives



MALDIVES  
BUREAU OF  
STATISTICS



### CHILDREN CURRENTLY NOT STUDYING

Focus on ages 2-17, priority age bracket.

Children not attending school

**9,450**

Republic



**5,118**

Male



**4,332**

Female



**6,345**

(1,719 boys, 1,386 girls)

Maale



**3,105**

(3,399 boys, 2,946 girls)

Atolls

Despite not having attended school, a notable proportion of children aged 10-17 years in the Maldives possess basic literacy skills.

### CHILDREN CURRENTLY NOT STUDYING BY DISABILITY SEVERITY

#### PRE-SCHOOL AGE

24% out of school due to severe disability.

#### PRIMARY-SCHOOL AGE

Majority out of school in primary age group due to severe disability.

Only 1% of children aged 16-17 out of school due to severe disability

### EDUCATION ATTAINMENT

Educational attainment crucial for community productivity and economic potential.

Varied landscape in educational achievement among children aged 2-17.

Disparities observed between Maale and Atolls, particularly in higher secondary education.

Majority complete lower secondary education; A' Level and diploma attainment relatively low

# LEAVE NO ONE BEHIND

## Children in Maldives



### EMPLOYMENT STATUS OF CHILD POPULATION

**17,651**

Children aged 15-17 years



Approximately 1 in 6 children aged 15-17 are part of the labour force

Education remains a priority for the majority of children in this age group, with significant enrollment rates observed.

### CHILDREN IN EMPLOYMENT BY OCCUPATION

Employed children 15-17 years by occupation




Service and sales workers, clerical support workers, and professionals are among the prominent occupational categories

### EMPLOYED CHILDREN BY AGE

**58%**  
Boys

**42%**  
Girls

Employment rates increase with age, peaking at 27% among 17-year-olds.

 Girls' representation in employment is slightly lower compared to boys, with notable differences in occupation distribution.

### EMPLOYED CHILDREN 15-17 YEARS BY TOP 10 OCCUPATION



Cashiers and ticket clerks constitute the most common occupation, employing 21% of children aged 15-17 in the workforce.

### CHILDREN IN EMPLOYMENT



**180,374**

Total employed population aged 15 and above



**2,268**

Employed children aged 15 to 17

Only 1.3% of the total employed population comprises children aged 15-17.



Occupational patterns vary across regions, with service and sales workers prevailing in Maale and Atolls.



# LEAVE NO ONE BEHIND

## Children in Maldives



### GENDER DISPARITIES



Gender disparities exist across various occupational categories, highlighting the need for gender-sensitive labour market policies.



Girls tend to be underrepresented in certain occupations, while boys dominate others

### INDUSTRY DISTRIBUTION AMONG EMPLOYED CHILDREN

Employed children 15-17 years by Industry



**35%**

Wholesale and retail trade; Repair of motor vehicles and motorcycles



**18%**

Accommodation and Food Service activities



**13%**

Public administration and defense; compulsory social security

### HOURS WORKED BY EMPLOYED CHILDREN

Employed children 15-17 years by average hours of worked

#### MOST COMMON HOURS



Eight hours per day for the majority, with a notable portion working for twelve hours.



#### GENDER VARIATION

Boys slightly more engaged in longer working hours compared to girls.

### GENDER DISPARITIES IN EMPLOYMENT

Employed children 15-17 years by Industry



Boys

Dominant in Wholesale and retail trade, Repair of motor vehicles, and Accommodation and Food Service activities.



Girls

Predominant in Education and Manufacturing sectors.

# LEAVE NO ONE BEHIND

## Children in Maldives



### INFORMAL SECTOR EMPLOYMENT

Employed children 15-17 years by informal, formal and household sector



#### PREVALENCE

**38%** of employed children engaged in informal sector work



#### GENDER DISPARITY

More boys in formal sector, more girls in household employment.

### INFORMAL VS. FORMAL EMPLOYMENT

Employed children 15-17 years by informal and formal employment



**68%**

Informal employment



**32%**

Formal employment

### AGE VARIATION

Informal employment increases with age among adolescents

### NOT IN EDUCATION, EMPLOYMENT, OR TRAINING (NEET) RATE:

NEET rate for children 15-17 years by Sex

**APPROXIMATELY 16% ACROSS ALL REGIONS**

Overall NEET Rate



#### GENDER VARIATION

Slight differences in NEET rates between boys and girls

### UNEMPLOYMENT RATE AMONG CHILDREN

Unemployment rate for children 15-17 years by locality

#### REGIONAL VARIATION

**20%**

Republic



**23%**

Maale



**19%**

Atolls

#### GENDER DISPARITY



**23%**

Boys



**17%**

Girls





### **MALDIVES BUREAU OF STATISTICS**

Ministry of Housing, Land & Urban  
Development  
Contact: (+960) 3008400  
Dharul Eman Building (7, 8, 9th Floor),  
Majeedhee Magu,  
Male 20345, Republic of Maldives

info@stats.gov.mv  
<http://statisticsmaldives.gov.mv>

@statsmaldives



### **UNICEF MALDIVES**

Contact: (+960) 790 5580, (+960) 334 3353  
Thuniya Building, 5th floor, Henveiru,  
Boduthakurufaanu Magu,  
Male,  
Republic of Maldives

male@unicef.org  
<https://www.unicef.org/maldives/>

@UNICEF.MDV

