



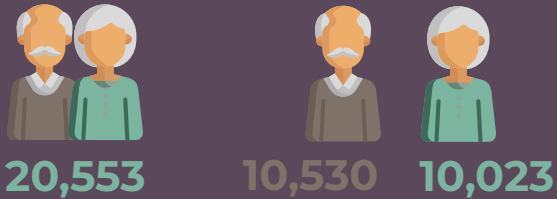
INTERNATIONAL DAY OF OLDER PERSONS

1 October 2023

Fulfilling the Promises of the Universal Declaration of Human Rights for Older Persons: Across Generations

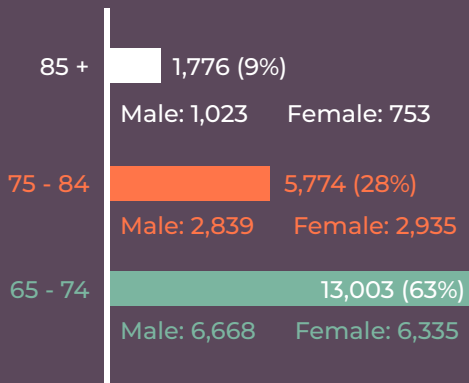
Maldives Population & Housing Census 2022

ELDERLY POPULATION



Elderly accounts to 5% of the total population. Within the elderly population, most of the elderly are within the age group of 65-74 years (63%). Within the elderly only 9% of them are 85 years and above.

ELDERLY POPULATION (AGE DISTRIBUTION)



EDUCATIONAL ATTAINMENT AMONG ELDERLY

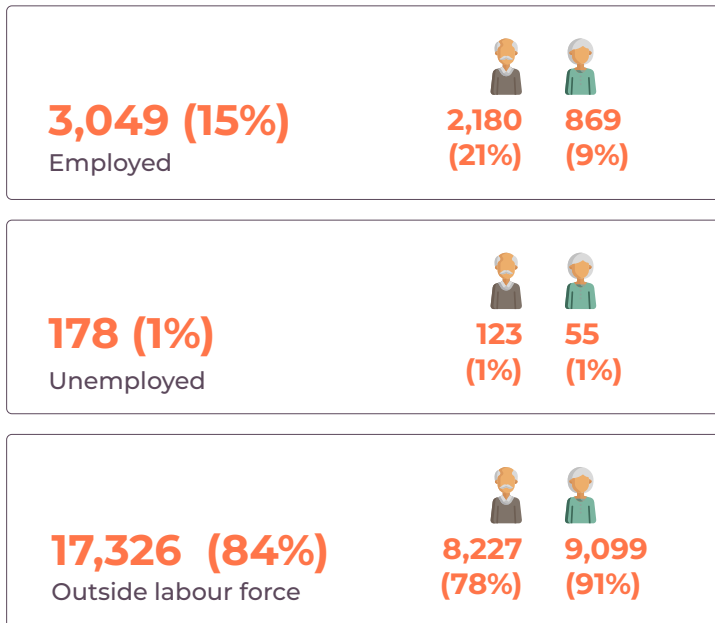


More than half of the elderly population have achieved primary level education. One in every 5 elderly people have never attended school

Education Level	Male (%)	Female (%)	Total (%)
Pre-school education	2%	2%	2%
Primary education	72%	67%	76%
Secondary education	13%	14%	11%
Higher secondary education	0%	0%	0%
Certificate/ Diploma	7%	9%	4%
Degree & above	1%	2%	0%
Level not stated	6%	5%	6%

EMPLOYMENT AMONG ELDERLY

65+ Resident Maldivian

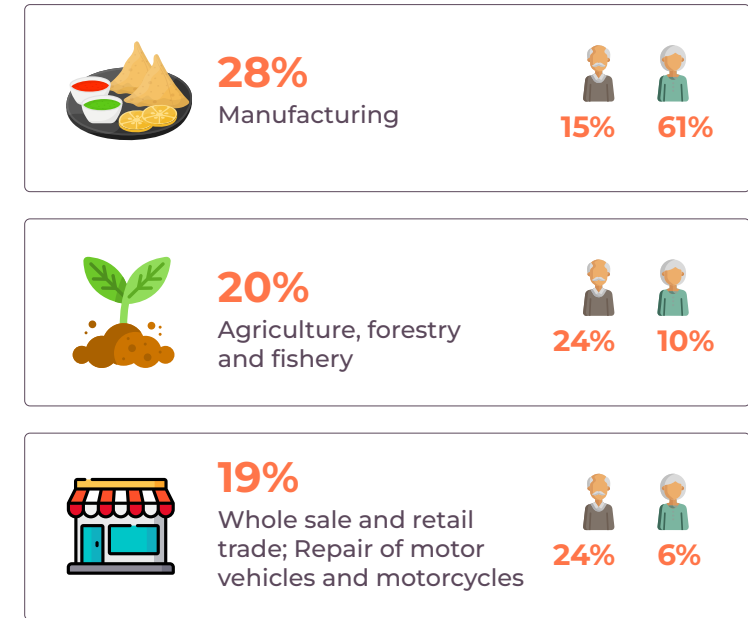


Labour force participation rate for elderly population is 16%. It is much lower at 9% for females compared to 22% for males.

Unemployment rate for the elderly population is 6%.

EMPLOYMENT BY INDUSTRY

Most of the elderly are involved in manufacturing (eg: like making shorteats, fangi vinun, etc) and in agriculture, forestry and fishing.



MARITAL STATUS AMONG ELDERLY POPULATION



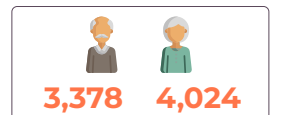
About 60% of the elderly are married while 29% of them are widowed.

Marital Status	Male (%)	Female (%)	Total (%)
Never married	1%	0%	1%
Married	60%	40%	78%
Divorced	11%	12%	9%
Widowed	29%	47%	11%

ELDERLY AND DISABILITY

7,402

65+ Population with Disability



Prevalence of disability among elderly population is at 36%.



Disability among elderly is mostly in walking, seeing and remembering.