

جدول 11.3: مینیسٹری ہاؤس کے تحت رجسٹرڈ اور نئے رجسٹرڈ گاڑیوں کے نمبر، 2016 - 2017
 Table 11.3 : REGISTERED AND NEWLY REGISTERED VEHICLES ACCORDING TO TYPE, 2016 - 2017

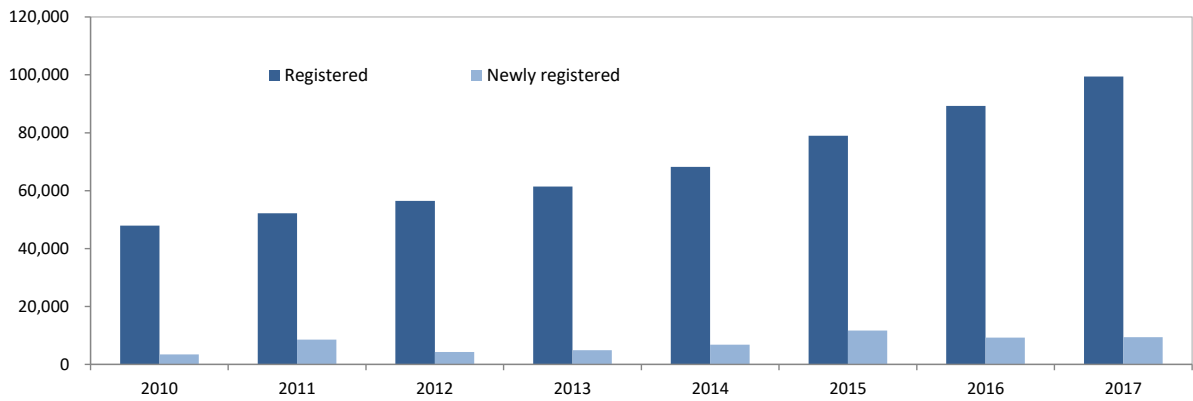
| Type of Vehicles | Registered میں رجسٹرڈ گاڑیوں کے نمبر | | Newly Registered نئے رجسٹرڈ گاڑیوں کے نمبر | |
|---------------------|---|---------------|---|--------------|
| | 2016 | 2017 | 2016 | 2017 |
| Total | 89,237 | 99,411 | 9,250 | 9,361 |
| Motor cycle | 74,354 | 81,913 | 7,794 | 7,559 |
| Car | 5,754 | 6,165 | 480 | 412 |
| Bus | 178 | 196 | 15 | 18 |
| Pick-Up | 2,550 | 2,813 | 296 | 164 |
| Lorry | 820 | 852 | 19 | 31 |
| Van | 1,485 | 1,596 | 115 | 110 |
| Jeep | 574 | 599 | 22 | 25 |
| Ambulance | 89 | 113 | 10 | 24 |
| Bouser | 45 | 53 | 3 | 8 |
| Crane | 175 | 218 | 22 | 43 |
| Truck | 799 | 1,014 | 114 | 215 |
| Fork-Lift | 313 | 375 | 26 | 62 |
| Excavator | 544 | 655 | 81 | 111 |
| Dumper | 155 | 166 | 5 | 11 |
| Tractor | 194 | 207 | 19 | 13 |
| Reach Stacker | 8 | 8 | 0 | 10 |
| Land Cruiser | 1 | 1 | 0 | 0 |
| Fire Vehicles | 18 | 21 | 0 | 3 |
| Backhoe Loader | 43 | 49 | 4 | 6 |
| Loader | 185 | 214 | 38 | 29 |
| T-Type Tractor | 4 | 4 | 0 | 0 |
| Ditch Witch | 1 | 1 | 0 | 0 |
| Dozer Crawler | 11 | 13 | 1 | 2 |
| Grader | 12 | 14 | 2 | 2 |
| Roller | 35 | 36 | 14 | 1 |
| Microbin | 2 | 2 | 0 | 0 |
| Road Sweeper | 3 | 7 | 0 | 4 |
| Wheel Paver | 5 | 5 | 0 | 0 |
| Compactor | 6 | 7 | 0 | 1 |
| Tow Truck | 1 | 1 | 0 | 0 |
| Battery Scooter | 589 | 1,025 | 107 | 436 |
| Mini Truck | 1 | 1 | 0 | 0 |
| Pile Driver | 1 | 1 | 0 | 0 |
| G.Compactor Truck | 1 | 1 | 0 | 0 |
| Concrete Mobile Tru | 14 | 17 | 7 | 3 |
| Fuel Tank Truck | 13 | 18 | 0 | 5 |
| Double Cab | 25 | 35 | 5 | 10 |
| Battery Car | 208 | 238 | 34 | 30 |
| QUAD BIKE | 2 | 2 | 1 | 0 |
| CARMIX | 19 | 22 | 13 | 3 |
| Prime Mover | 0 | 18 | 3 | 10 |
| WATER TRUCK | 2 | 2 | 2 | 0 |
| BATTERY TRICYCLE | 111 | 647 | 112 | 535 |
| Tricycle | 11 | 66 | 11 | 55 |

Source: Transport Authority

ذرائع: مینیسٹری ہاؤس کے تحت رجسٹرڈ گاڑیوں کے نمبر

In numbers

Figure 11.2: Number of registered vehicles, 2010- 2017



In percent

Figure 11.3: Growth rates of selected vehicles, 2011 - 2017

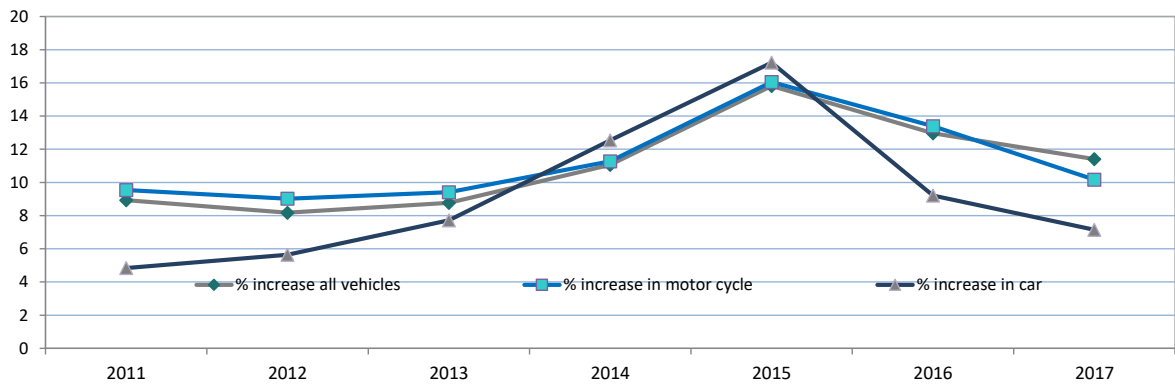


Figure: 11.4: Percentage share of selected vehicles, 2017

