

17.6 : 2015 100 2012

Table 17.6 : CONSUMER PRICE INDEX, FOR MALE' AND ATOLLS BY MONTH, 2015

(Index - base: June 2012=100)

Major Groups	Monthly CPI, 2015												2015	2012	
	Jan	Feb	Mar	Apr	May	Jun	Jul	Aug	Sep	Oct	Nov	Dec			Jan - Dec
Republic															
Food and beverages including fish	105.1	104.9	104.1	104.8	106.3	108.1	107.0	107.6	107.5	107.4	108.2	106.3	106.4		
Food and beverages excluding fish	105.1	104.6	104.5	103.9	106.7	108.3	107.3	107.9	108.7	109.0	107.7	107.0	106.7		
Fish Index	105.0	105.5	103.1	106.9	105.4	107.6	106.2	106.9	104.6	103.7	109.3	104.6	105.7		
Tobacco	104.9	104.8	104.4	119.8	122.4	122.6	122.6	121.3	121.3	121.8	121.8	122.0	117.5		
Clothing and footwear	102.6	101.8	101.5	101.6	101.7	101.7	101.6	101.1	101.3	101.4	101.2	101.0	101.5		
Housing, water, electricity, gas and other fuel	106.8	107.0	107.0	107.4	107.7	107.8	108.1	108.2	108.2	108.3	108.4	108.4	107.8		
Actual rentals for housing	111.0	111.2	110.9	111.4	112.1	112.2	112.9	113.2	113.2	113.3	113.5	113.6	112.4		
Furnishing, household equipment & routine maintenance	96.5	97.9	97.9	97.9	93.1	96.0	96.7	97.1	96.9	96.9	96.3	96.1	96.6		
Health	120.7	122.4	122.4	122.4	122.3	124.2	124.2	124.8	124.8	125.1	125.1	124.8	123.6		
Transport	102.0	101.9	103.4	104.3	103.3	103.1	103.3	103.1	102.8	102.5	102.6	102.8	102.9		
Communication	100.9	100.9	100.7	100.5	100.5	100.5	100.5	100.6	100.5	100.5	100.4	100.4	100.6		
Recreation and culture	102.3	101.9	102.8	103.0	101.8	101.7	102.6	102.3	102.2	102.1	100.2	100.5	102.0		
Education	115.8	115.8	119.7	119.7	119.7	119.7	119.7	119.7	119.7	119.7	119.7	119.7	119.0		
Hotels, cafés and restaurants	121.3	121.3	120.7	120.8	120.8	120.8	121.2	121.2	121.1	121.1	121.1	121.1	121.1		
Miscellaneous goods and services	99.1	98.9	98.7	98.6	98.8	99.0	98.8	98.5	98.7	98.6	98.6	98.4	98.7		
All groups CPI (Total)	105.3	105.4	105.4	106.1	106.1	107.0	106.9	107.0	107.0	107.0	107.1	106.5	106.4		
Total excluding fish	105.3	105.4	105.6	106.0	106.2	106.9	106.9	107.0	107.2	107.3	106.8	106.7	106.4		

Major Groups	Monthly CPI, 2015													2015	2015	
	Jan	Feb	Mar	Apr	May	Jun	Jul	Aug	Sep	Oct	Nov	Dec	Jan - Dec			
Male'																
Food and beverages including fish	106.4	105.6	102.9	105.4	106.9	109.7	108.7	109.1	108.2	108.8	110.0	107.5	107.4			
Food and beverages excluding fish	105.9	106.3	106.1	104.7	107.6	110.1	108.4	109.0	109.9	110.5	108.9	108.7	108.0			
Fish Index	107.6	104.3	96.3	106.8	105.4	108.8	109.3	109.2	104.7	105.3	112.4	105.2	106.3			
Tobacco	104.4	104.2	103.5	120.7	120.2	120.4	120.1	120.0	121.0	120.6	120.2	119.4	116.2			
Clothing and footwear	100.6	98.9	99.0	99.0	99.7	99.5	99.5	97.7	98.7	98.9	98.4	98.3	99.0			
Housing, water, electricity, gas and other fuel	107.8	108.1	108.4	109.1	109.6	109.7	110.2	110.4	110.4	110.5	110.6	110.7	109.6			
Actual rentals for housing	111.0	111.2	111.6	112.1	112.8	113.0	113.7	114.0	114.0	114.1	114.3	114.5	113.0			
Furnishing, household equipment & routine maintenance	94.2	96.6	96.6	96.6	88.1	93.7	94.5	95.7	95.3	95.4	94.3	94.3	94.6			
Health	125.3	127.6	127.6	127.4	127.4	127.5	127.6	127.5	127.4	127.8	127.8	127.4	127.4			
Transport	105.6	105.5	107.4	108.5	107.6	107.9	108.1	107.9	107.6	107.2	107.2	107.6	107.3			
Communication	96.9	96.9	96.7	96.1	96.1	96.1	96.1	96.1	96.0	96.0	95.8	95.7	96.2			
Recreation and culture	101.7	101.4	102.0	102.0	100.9	100.4	101.5	101.4	101.4	101.0	99.3	99.7	101.1			
Education	117.3	117.3	117.3	117.3	117.3	117.3	117.3	117.3	117.3	117.3	117.3	117.3	117.3			
Hotels, cafés and restaurants	125.5	125.5	125.5	125.6	125.6	125.6	126.1	126.1	126.1	126.1	126.1	126.0	125.8			
Miscellaneous goods and services	99.2	98.3	98.3	98.4	98.5	98.9	98.3	97.8	98.3	98.0	98.2	97.8	98.3			
All groups CPI (Total)	106.4	106.4	105.9	107.0	106.8	108.0	108.0	108.1	107.9	108.1	108.2	107.6	107.4			
Total excluding fish	106.2	106.6	106.7	107.0	106.9	107.9	107.9	108.0	108.2	108.3	107.9	107.9	107.5			

Major Groups Atolls	Monthly CPI, 2015													2015 Jan - Dec	2015 Jan - Dec	
	Jan	Feb	Mar	Apr	May	Jun	Jul	Aug	Sep	Oct	Nov	Dec	Jan - Dec			
	Jan	Feb	Mar	Apr	May	Jun	Jul	Aug	Sep	Oct	Nov	Dec	Jan - Dec			
Food and beverages including fish	104.2	104.4	104.8	104.5	105.9	107.1	105.9	106.6	107.0	106.4	107.1	105.5	105.8	105.8	105.8	105.8
Food and beverages excluding fish	104.7	103.6	103.5	103.5	106.1	107.2	106.7	107.1	108.0	108.0	107.0	106.1	106.0	106.0	106.0	106.0
Fish Index	103.1	106.3	107.7	107.0	105.4	106.8	104.1	105.4	104.5	102.6	107.2	104.2	105.4	105.4	105.4	105.4
Tobacco	105.0	105.0	104.8	119.5	123.1	123.4	123.4	121.7	121.4	122.2	122.3	122.9	117.9	117.9	117.9	117.9
Clothing and footwear	103.9	103.6	103.2	103.2	103.1	103.1	103.0	103.3	103.0	103.0	103.0	102.8	103.2	103.2	103.2	103.2
Housing, water, electricity, gas and other fuel	104.9	104.9	104.2	104.2	104.2	104.2	104.2	104.1	104.1	104.1	104.1	104.1	104.3	104.3	104.3	104.3
Actual rentals for housing	111.5	111.5	98.0	98.0	98.0	98.0	98.0	98.0	98.0	98.0	98.0	98.0	100.3	100.3	100.3	100.3
Furnishing, household equipment & routine maintenance	98.0	98.8	98.8	98.7	96.2	97.5	98.0	98.1	98.0	97.8	97.6	97.3	97.9	97.9	97.9	97.9
Health	118.8	120.3	120.3	120.3	120.3	122.9	122.9	123.7	123.8	124.0	124.0	123.8	122.1	122.1	122.1	122.1
Transport	99.3	99.3	100.4	101.2	100.2	99.5	99.7	99.5	99.3	99.1	99.1	99.3	99.7	99.7	99.7	99.7
Communication	104.6	104.6	104.4	104.5	104.5	104.5	104.5	104.7	104.6	104.6	104.6	104.6	104.6	104.6	104.6	104.6
Recreation and culture	102.7	102.2	103.3	103.5	102.3	102.4	103.1	102.7	102.6	102.6	100.7	101.0	102.4	102.4	102.4	102.4
Education	113.6	113.6	122.9	122.9	122.9	122.9	122.9	122.9	122.9	122.9	122.9	122.9	121.3	121.3	121.3	121.3
Hotels, cafés and restaurants	114.4	114.4	112.7	112.9	112.9	112.9	113.0	113.0	113.0	113.0	113.0	113.0	113.2	113.2	113.2	113.2
Miscellaneous goods and services	99.1	99.3	99.0	98.8	99.0	99.1	99.2	98.9	99.0	99.0	99.0	98.8	99.0	99.0	99.0	99.0
All groups CPI (Total)	104.4	104.6	104.9	105.3	105.5	106.1	105.9	106.1	106.2	106.0	106.1	105.5	105.5	105.5	105.5	105.5
Total excluding fish	104.5	104.4	104.6	105.1	105.5	106.1	106.1	106.2	106.3	106.3	105.9	105.7	105.6	105.6	105.6	105.6

Source: National Bureau of Statistics

Source: National Bureau of Statistics

Figure 17.4: Consumer Price Index by Month, Republic, 2013 - 2015

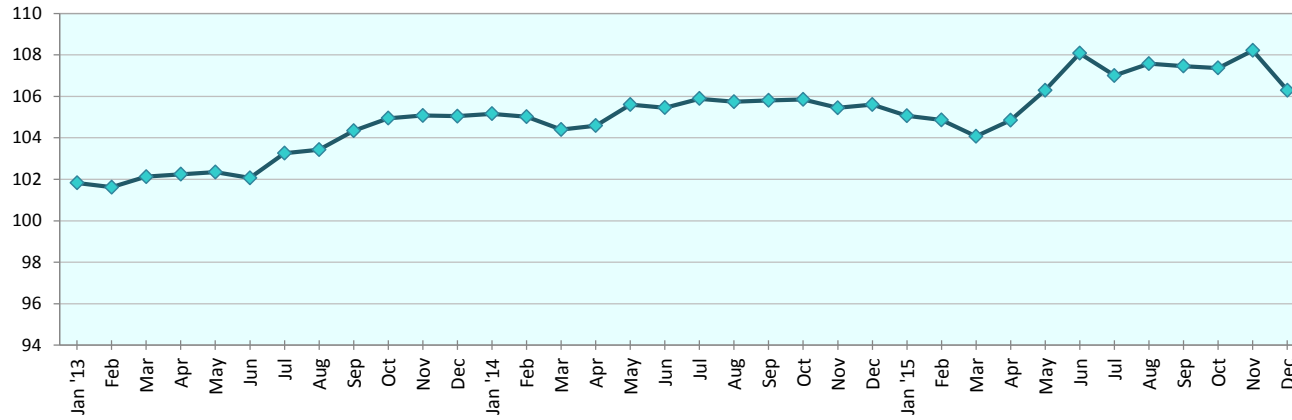


Figure 17.5: Consumer Price Index by Major Categories, Republic, 2013 - 2015

