



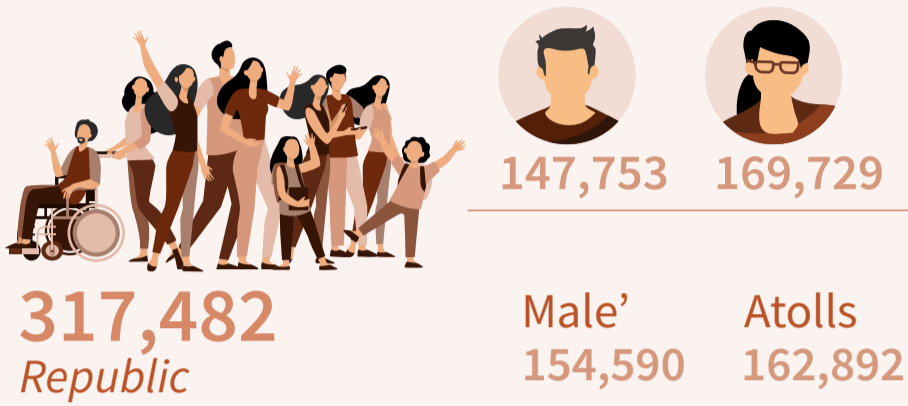
# Household INCOME AND EXPENDITURE Survey 2019

## EMPLOYMENT INDICATORS

HIES 2019 covers ONLY the NORMAL households in administrative islands. It excludes tourist resorts, industrial islands and labour quarters (10+ people).

### POPULATION

#### POPULATION - 15 YEARS AND ABOVE



### LABOUR FORCE

#### EMPLOYMENT

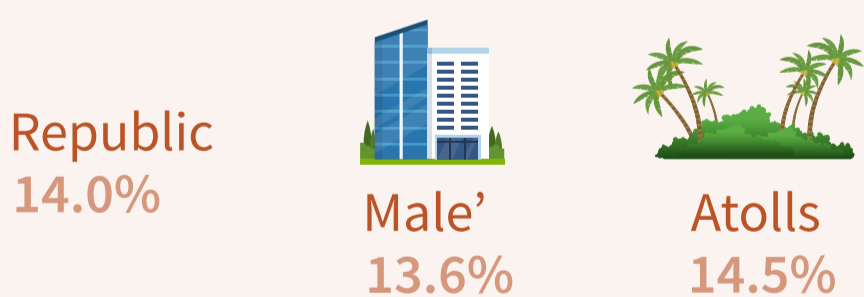


#### LABOUR UNDERUTILIZATION

#### TIME RELATED UNDEREMPLOYMENT

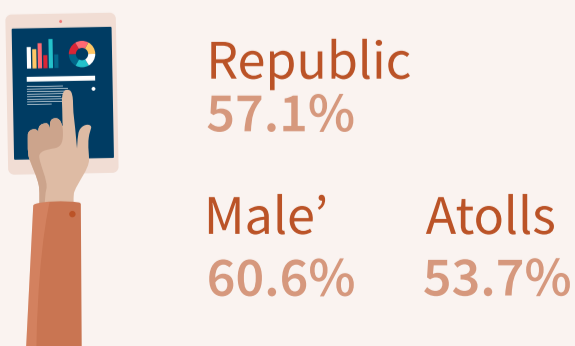


#### TIME RELATED UNDEREMPLOYMENT



#### EMPLOYMENT-TO-POPULATION RATIO

Employed population out of 15+population



#### LABOUR FORCE PARTICIPATION RATE

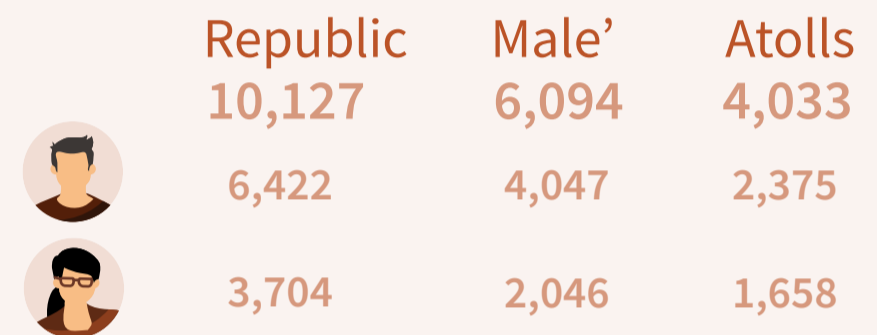
60.2% Republic

Male' 64.5% Atolls 56.2%

Labour force participation rate for women is much lower at 46% compared to 77% for men

The labour force participation rate (LFRP) is an indicator of the level of labour market activity. It measures the extent of working age population who are economically active. It is defined as the ratio of labour force (employed + unemployed) to the working age population expressed in percentage term.

#### UNEMPLOYMENT



#### UNEMPLOYMENT RATE



### PERSONS OUTSIDE THE LABOUR FORCE

#### POTENTIAL LABOUR FORCE



This is 6% of working age population

Potential Labour Force includes those  
1) seeking for work but not available  
2) available for work but not seeking

#### OTHERS OUTSIDE LABOUR FORCE

107,404

Persons include others outside Labour Force (not seeking, not available for work)

This is 34% of working age population



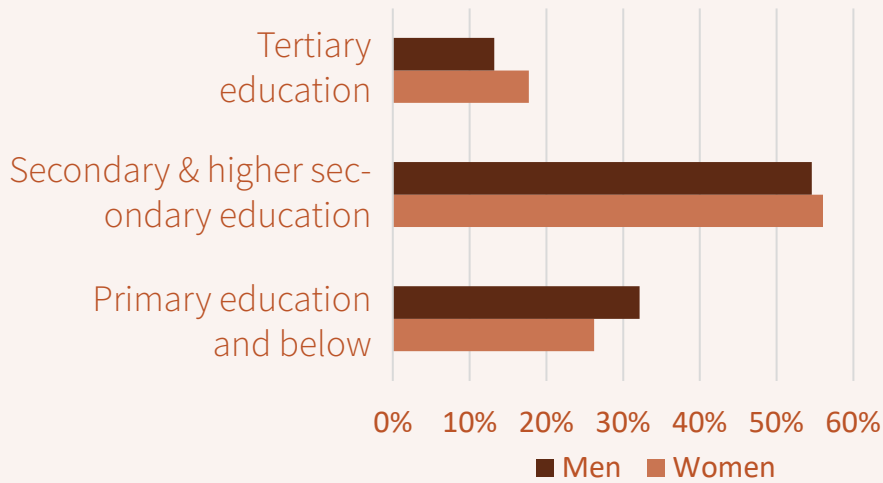


# Household INCOME AND EXPENDITURE Survey 2019

## EMPLOYMENT INDICATORS

### EDUCATION LEVEL OF EMPLOYED POPULATION

Republic



### TOP 5 OCCUPATION AT NATIONAL LEVEL



**7,976**  
Cleaners and Helpers in offices, Hotels and Other Establishments



**6,818**  
Deep-sea Fishery Workers



**7,726**  
Cashiers and ticket clerks

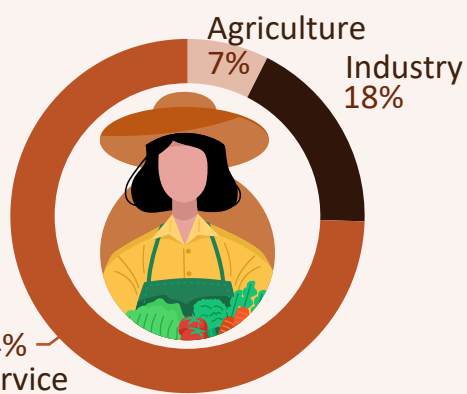


**6,216**  
General office clerks

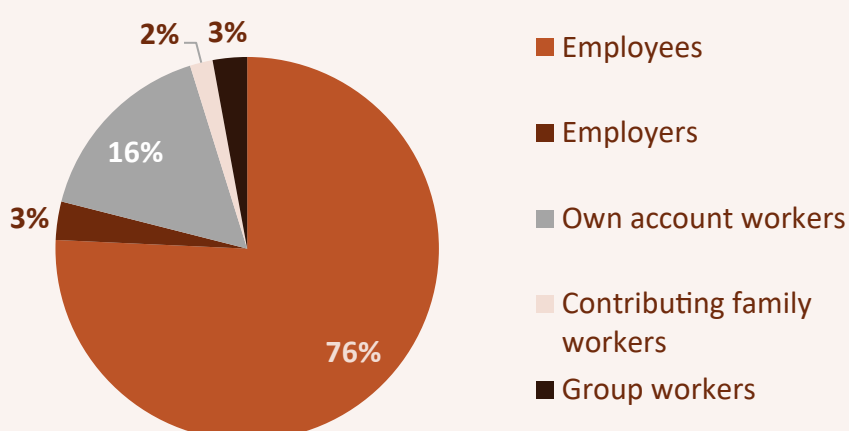


**5,148**  
Administrative and executive secretaries

### BRANCH OF ECONOMIC ACTIVITY



### STATUS IN EMPLOYMENT



### INFORMAL EMPLOYMENT



36%



44%

More women work in informal employment than men

### EMPLOYMENT RELATED INCOME- MAIN JOB

#### AVERAGE MONTHLY EARNINGS- MAIN JOB (IN MVR)

Republic

10,474



12,169



7,995



Male'  
13,014



Atolls  
7,716

#### AVERAGE HOURS USUALLY WORKED PER DAY AT MAIN JOB

(in Hrs)

Republic

8



9



7



Male'  
8



Atolls  
8

#### PROPORTION OF TIME SPENT ON UNPAID DOMESTIC AND CARE WORK

Republic

10%



5%



15%



Male'  
9%



Atolls  
11%

#### NEET (18-35 POPULATION)



15%



41%

#### NEET (15-24 POPULATION)



25%



30%

