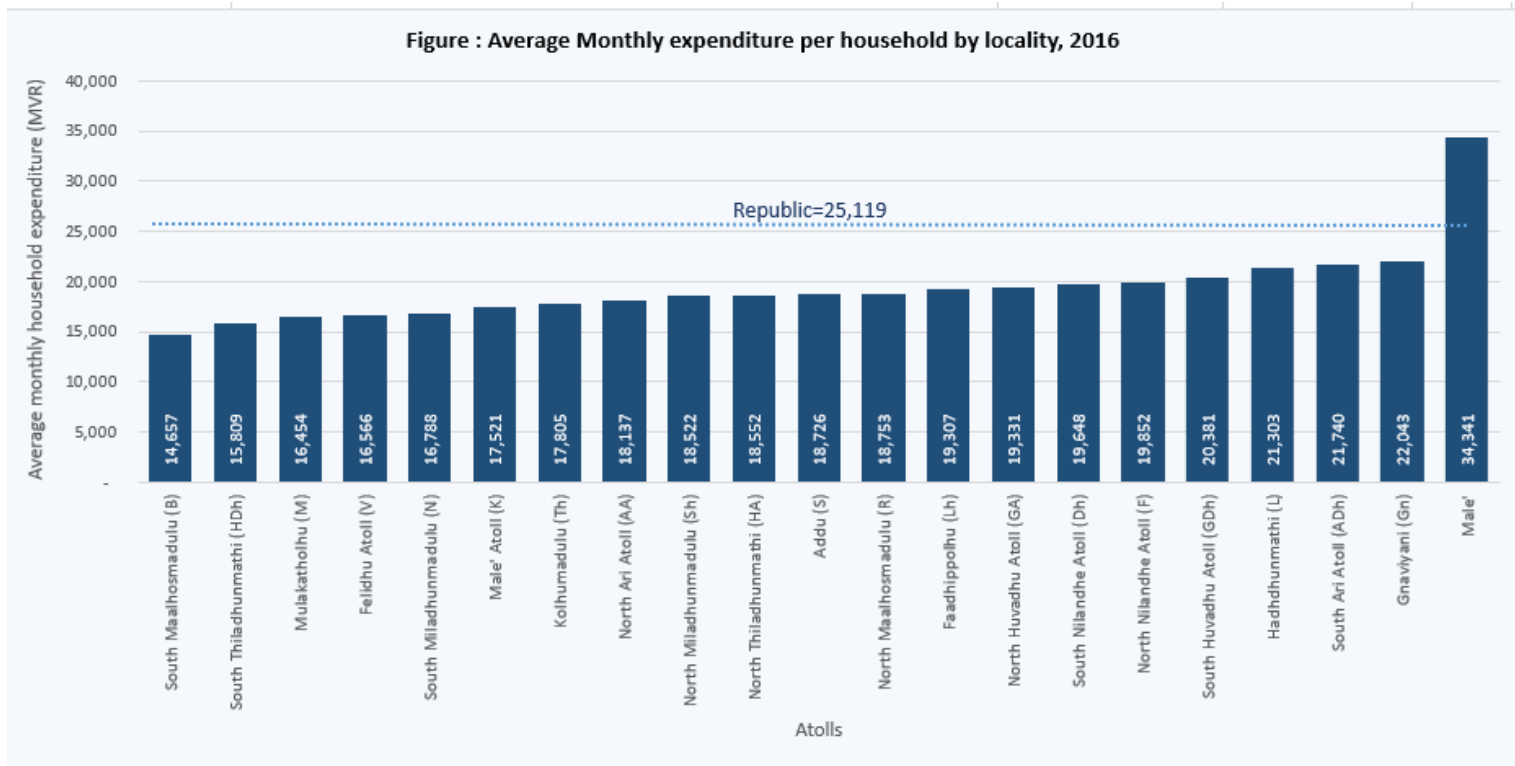




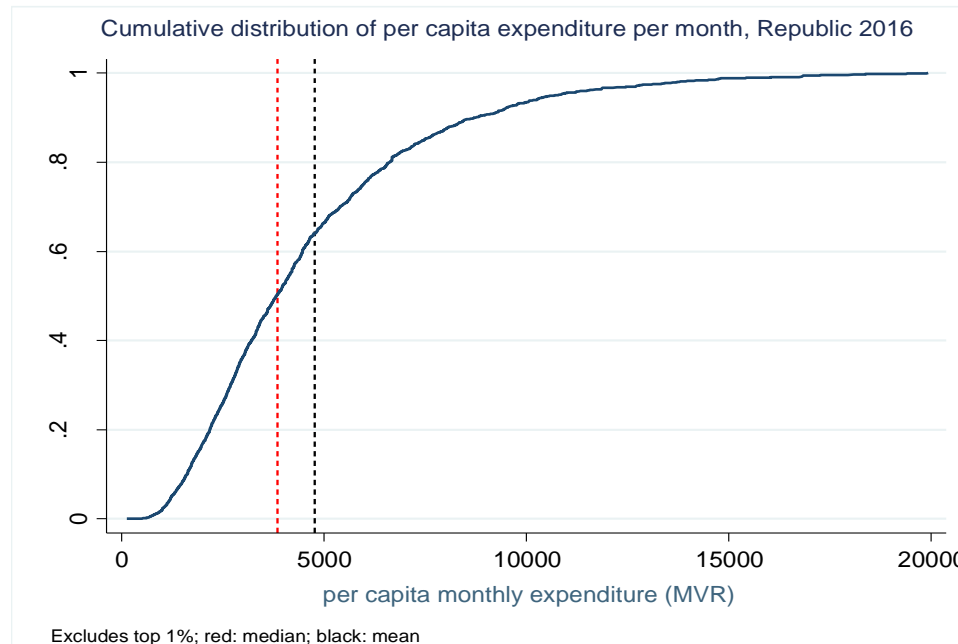
Average monthly expenditure per household by Atolls



- Gnaviyani (Gn) has the highest average household expenditure while the lowest household expenditure is observed in South Maalhosmadulu (B) Atoll.



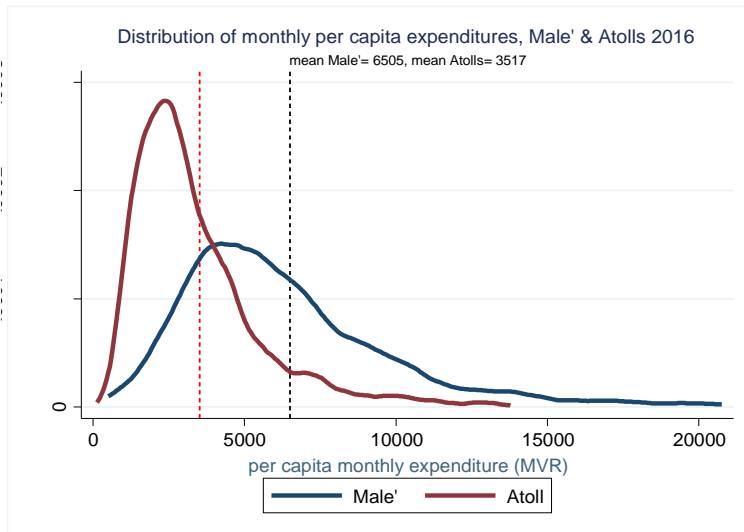
Cumulative distribution of expenditure



- The curve shows a steep rise, which indicates that large proportion of the population (a little over 60 percent), spends less than the average per capita (MVR 4,768) per month
- Half of the population spent less than the median per capita expenditure of MVR 3,850 per month.



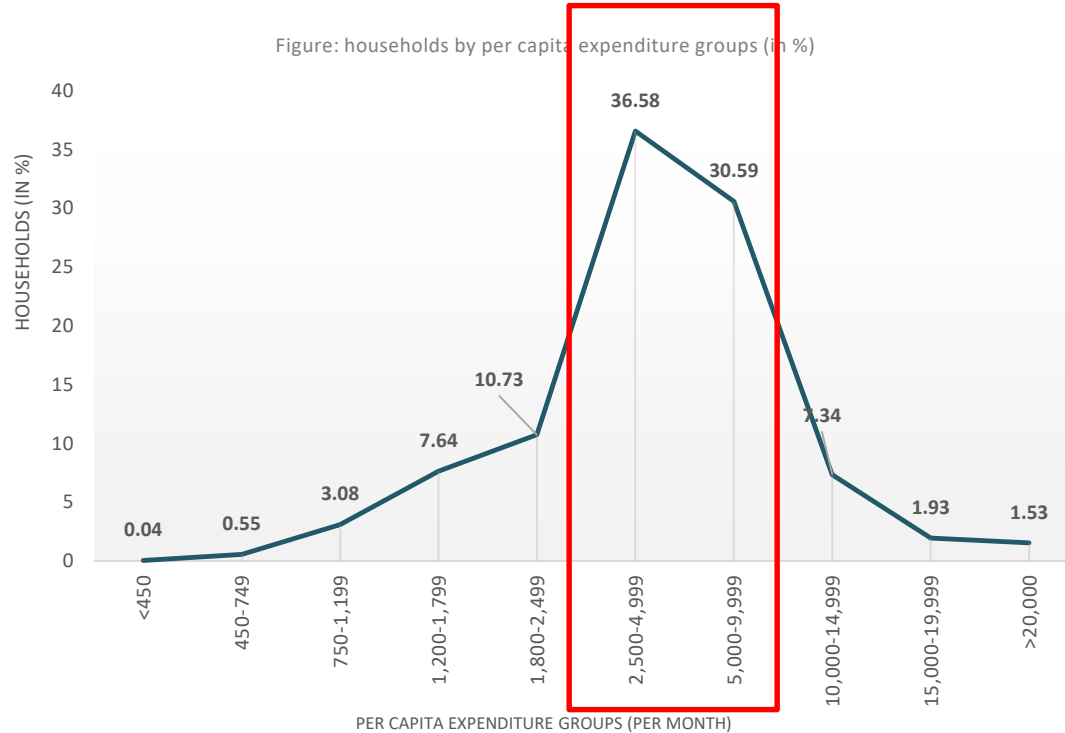
Distribution of monthly per capita expenditure, Male' & Atolls



- The distribution of the Atoll expenditure gets smaller toward to the right - few people got to spend more than the average per capita of Male'.
- The distribution of expenditure in Male' is more towards the right - which indicate higher level of expenses in Male'
- The right tail was more pronounced for Male'; which showed the high spending pattern of few.



Households by per capita expenditure groups

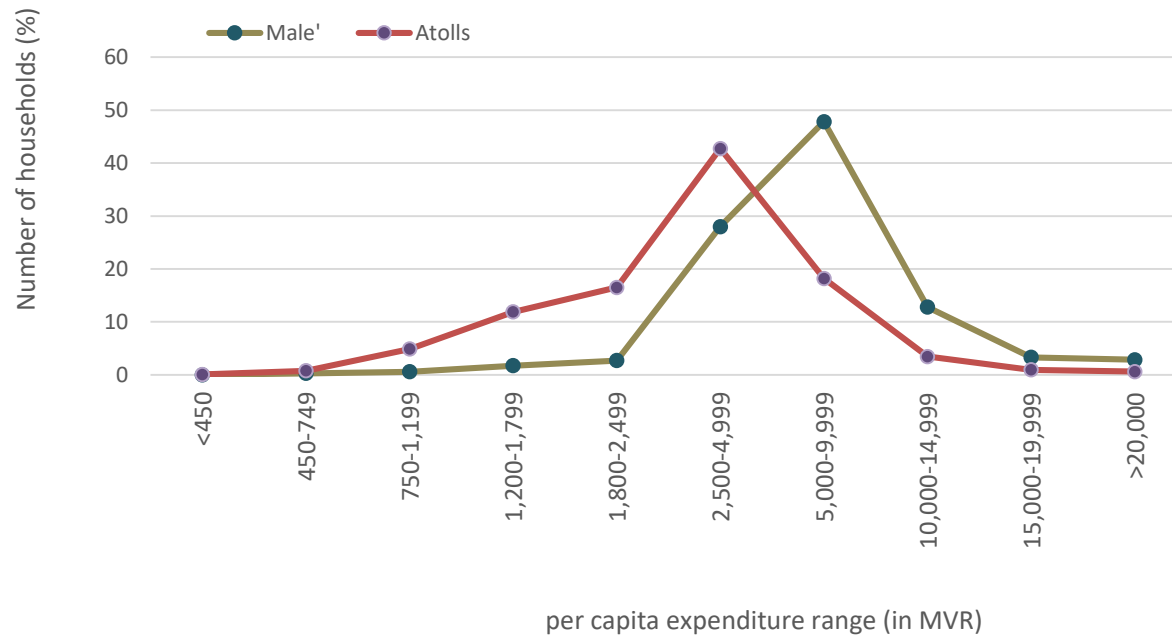


- Less than 5 percent of the households has a monthly per capita MVR 1,200. Majority of the households (67 percent) have a per capita expenditure concentrated between the range of MVR 2,500 and MVR 10,000.



Households by per capita expenditure groups

Figure: households by per capita expenditure groups (in %), Male' & Atolls 2016



- In the Atolls majority of the households spend between the per capita range of MVR 2,500-4,999
- In Male' people tend to spend more, where 48 percent of the households have a per capita expenditure between the range of MVR 5,000-9,999



Per capita expenditure by household size

| Household size | per capita expenditure | | |
|----------------|------------------------|--------|--------|
| | Republic | Male' | Atolls |
| 1 to 2 | 8,714 | 12,221 | 6,451 |
| 3 | 6,210 | 8,054 | 4,744 |
| 4 | 5,540 | 7,823 | 3,877 |
| 5 | 4,968 | 6,827 | 3,462 |
| 6 | 4,742 | 6,564 | 3,480 |
| 7 | 3,996 | 5,646 | 3,079 |
| 8 | 4,456 | 5,887 | 3,099 |
| 9 | 3,527 | 4,589 | 2,895 |
| 10+ | 3,559 | 4,632 | 2,809 |
| Average | 4,768 | 6,505 | 3,517 |

- The per capita expenditure decreases with the increase in household size. This is because larger households enjoy economies of scale in sharing the common facilities.



Expenditure per person per day

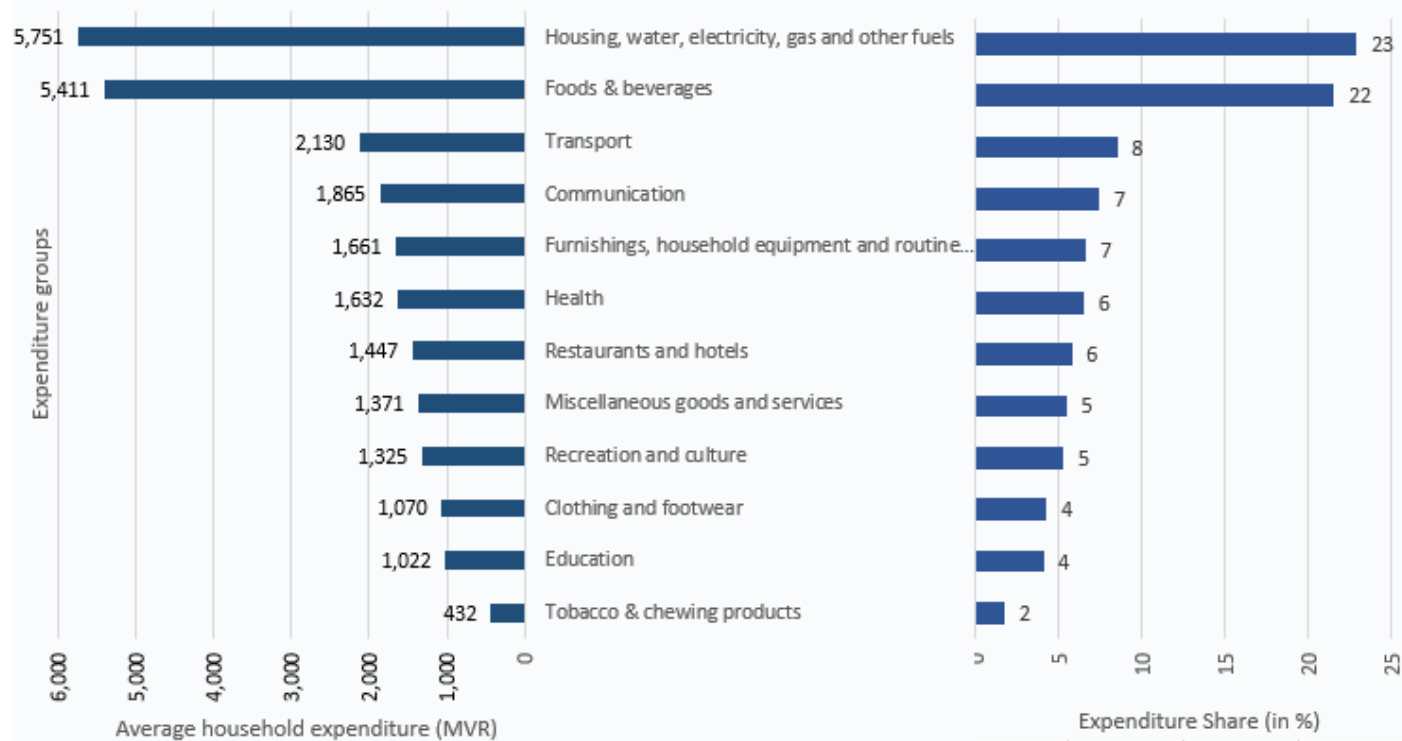
| Indicator | Republic | Male' | Atolls |
|-------------------------------------------|----------|--------|--------|
| Average Monthly expenditure per household | 25,119 | 34,341 | 18,498 |
| Median Monthly expenditure per household | 19,843 | 30,560 | 15,040 |
| Per capita expenditure per month | 4,768 | 6,505 | 3,517 |
| Median Per capita expenditure per month | 3,850 | 5,653 | 2,847 |
| Expenditure per person per day | 157 | 214 | 116 |
| Median expenditure per person per day | 127 | 186 | 94 |

- on average, a household in Maldives in 2016 spends MVR 25,119 per month on expenditure which gives rise to a per capita expenditure per month as MVR 4,768.
- The expenditure per person per day is MVR 157
- While a person in Male' spends MVR 214 per day, a person in the Atolls spend close to half of this amount.

Share of expenditure by broad groups- Republic



Figure: expenditure and share of expenditure by expenditure groups for Republic, 2016



- most of the household spending went for housing, water, electricity group.



Average household and per capita expenditure by broad groups

| broad expenditure groups | Average household expenditure per month | | | Average per capita expenditure per month | | |
|--------------------------------------------------------------------|-----------------------------------------|---------------|---------------|------------------------------------------|--------------|--------------|
| | Republic | Male' | Atolls | Republic | Male' | Atolls |
| Foods & beverages | 5,411 | 6,185 | 4,856 | 1,027 | 1,172 | 923 |
| Tobacco & chewing products | 432 | 427 | 436 | 82 | 81 | 83 |
| Clothing and footwear | 1,070 | 1,274 | 923 | 203 | 241 | 176 |
| Housing, water, electricity, gas and other fuels | 5,751 | 10,709 | 2,192 | 1,092 | 2,029 | 417 |
| Furnishings, household equipment and routine household maintenance | 1,661 | 1,824 | 1,544 | 315 | 345 | 293 |
| Health | 1,632 | 1,742 | 1,554 | 310 | 330 | 295 |
| Transport | 2,130 | 2,468 | 1,888 | 404 | 467 | 359 |
| Communication | 1,865 | 2,401 | 1,481 | 354 | 455 | 282 |
| Recreation and culture | 1,325 | 1,670 | 1,077 | 252 | 316 | 205 |
| Education | 1,022 | 1,806 | 459 | 194 | 342 | 87 |
| Restaurants and hotels | 1,447 | 2,174 | 925 | 275 | 412 | 176 |
| Miscellaneous goods and services | 1,371 | 1,661 | 1,163 | 260 | 315 | 221 |
| Average | 25,119 | 34,341 | 18,498 | 4,768 | 6,505 | 3,517 |

- On average a household spends close to MVR 6,000 for housing. This is high in Male' at MVR 10,000 while this is 5 times less in the Atolls.
- This meant that a person in Male' spend MVR 2,029 for housing per month while in Atolls a person spent close to MVR 417 per month



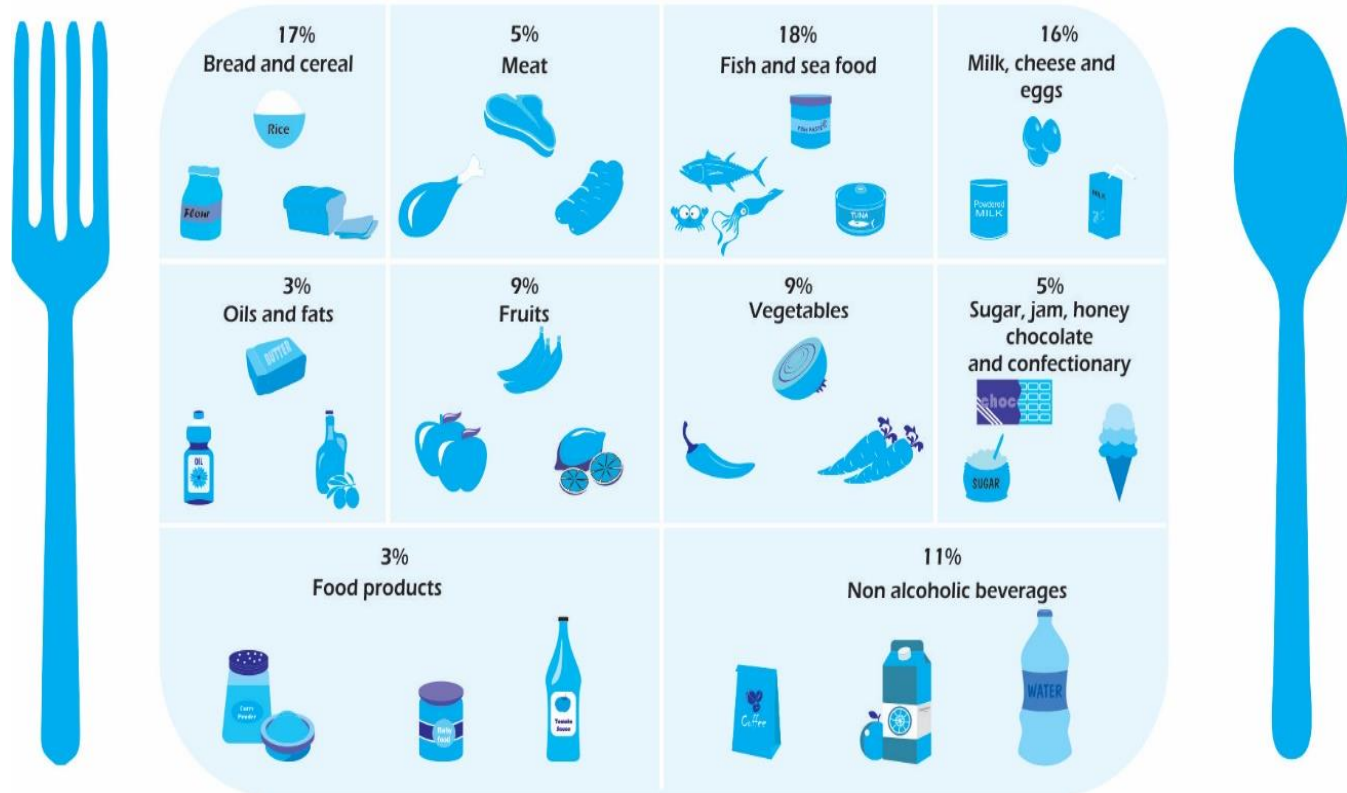
Summary statistics on households living on rent

| Indicators | HIES 2016 | | |
|---------------------------------------------------------|-----------|--------|--------|
| | Republic | Male' | Atolls |
| Share of households living on rent (%) | 29 | 63 | 5 |
| Share of rent out of total household expenditure (in %) | 14 | 23 | 1 |
| Average monthly household expenditure on rent (MVR) | 11,686 | 12,554 | 3,748 |
| Median monthly household expenditure on rent (MVR) | 12,000 | 12,000 | 2,500 |
| Per capita monthly expenditure on rent (MVR) | 2,227 | 2,313 | 1,047 |
| Median per capita monthly expenditure on rent (MVR) | 1,857 | 2,000 | 800 |

- huge contrast in the amount that a rented household in Male' pays compare to Atolls.
- While a person living in rented dwelling in the Atolls pays MVR 1000 per month as rent, a person living in Male' had to bear double this amount.



expenditure on food



- Out of the total food expenditure fish and sea food contributed the highest share followed by bread and cereal group.