

NATIONAL BUREAU OF STATISTICS,
MALDIVES

CONSUMER PRICE INDEX
JANUARY 2016

Release on 29 February 2016

Inflation rate for January 2016

- Monthly percentage change between December 2015 and January 2016
 - ▣ Monthly inflation: -0.10%
 - Monthly inflation excluding fish: +0.01%
- Change from the corresponding month of the previous year (i.e. January 2015 to January 2016)
 - ▣ Annual inflation (month on month): +1.04%

Overview of the CPI movements

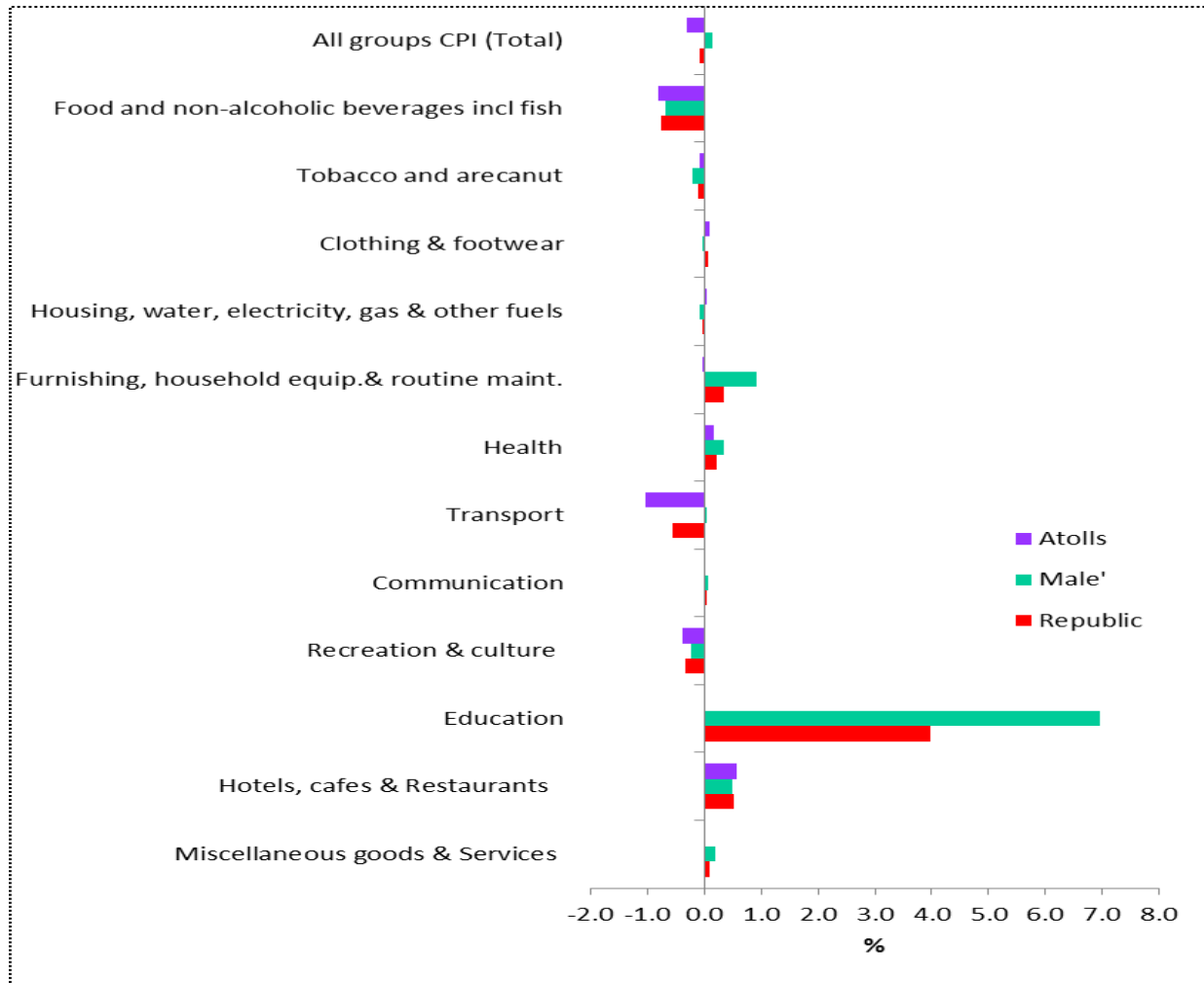
- CPI groups below are ordered in terms of their absolute significance to the change in All groups index points for the month

- The most significant price FALLS this month were for;
 - vegetables (-7.59%),
 - fish (-1.25%),
 - electricity (-1.30%),
 - fuels and lubricants (-9.94%),
 - equipment for the reception, recording and reproduction of sound and pictures (-1.87%),
 - tobacco (-0.33%),
 - oils and fats (-0.73%) and
 - bread and cereals (-0.14%).

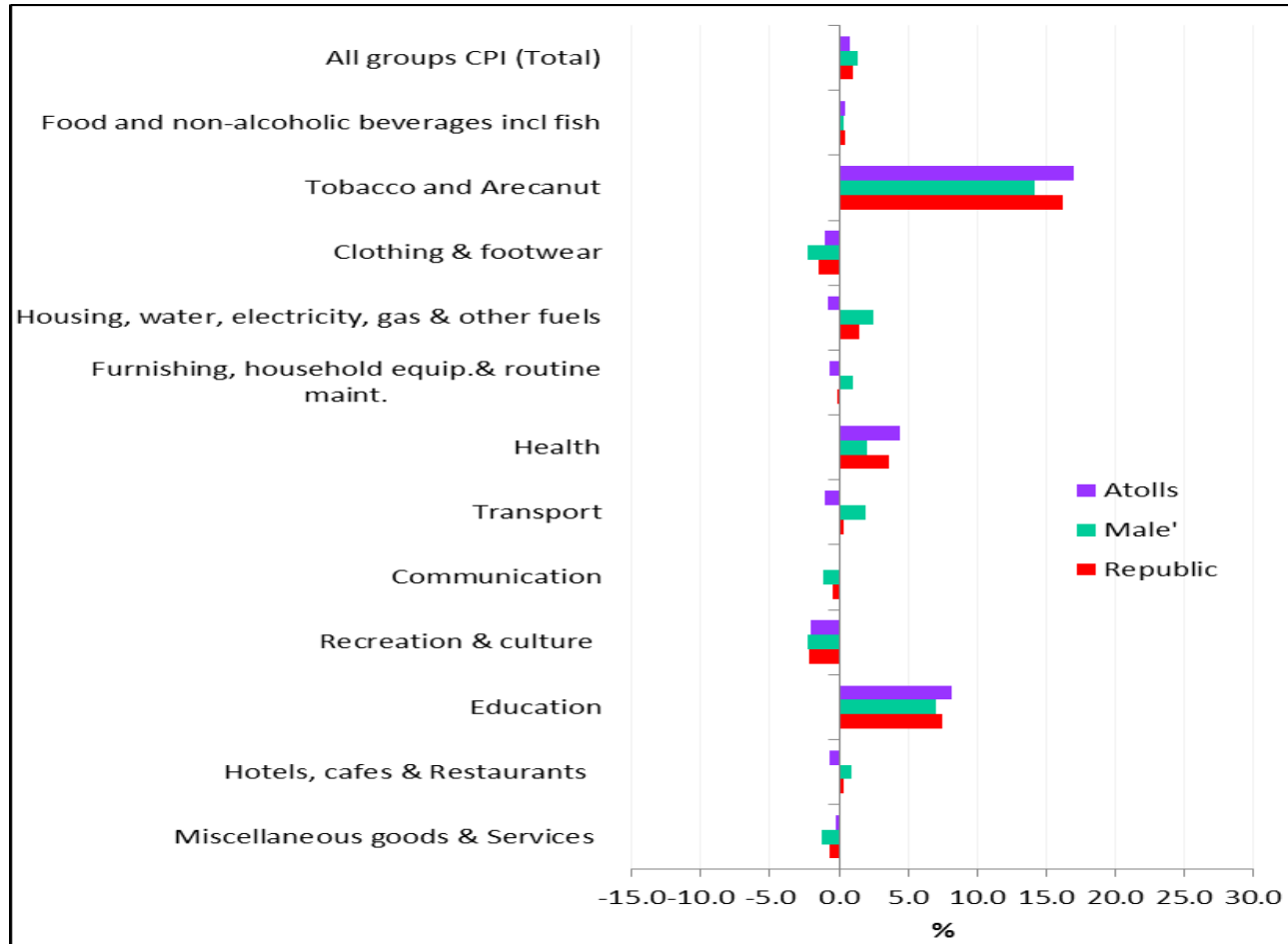
Overview of the CPI movements

- The most significant price RISES this month were from;
 - secondary education (+3.00%),
 - fruit (+3.45%),
 - pre-primary and primary education (+5.62%),
 - actual rentals paid by tenants (+0.31%),
 - major household appliances whether or not electrical (+1.37%),
 - milk, cheese and eggs (+0.48%),
 - Accommodation services (+15.89%),
 - pharmaceutical products (+0.59%),
 - Post-secondary non-tertiary education (+8.13%),
 - other appliances, articles and products for personal care (+0.17%),
 - passenger transport by air (+1.66%) and
 - glassware, tableware and household utensils (+0.55%).

Monthly Inflation (Dec 2015 to Jan 2016)



Annual Inflation (Jan 2015 to Jan 2016)



Percentage change and change in index points used

- ▣ Movements in CPI from one period to the other period are expressed in index points as well as percentage changes.
- ▣ Information on points contribution and points contribution change (or points change) is of immense value when analysing sources of price change

Contribution to monthly change (Dec 2015 to Jan 2016)

CPI GROUPS	Republic	Male'	Atolls
All groups CPI (Total)	-0.10	0.16	-0.32
Food and non-alcoholic beverages incl fish	-0.23	-0.18	-0.28
Tobacco and aracanut	0.00	0.00	0.00
Clothing & footwear	0.00	0.00	0.00
Housing, water, electricity, gas & other fuels	-0.01	-0.03	0.01
Furnishing, household equip.& routine maint.	0.03	0.06	0.00
Health	0.02	0.01	0.02
Transport	-0.03	0.00	-0.06
Communication	0.00	0.00	0.00
Recreation & culture	-0.02	-0.01	-0.02
Education	0.12	0.26	0.00
Hotels, cafes & Restaurants	0.02	0.03	0.01
Miscellaneous goods & Services	0.01	0.01	0.00

Up-coming CPI releases

- Monthly CPI is targeted to be released on the last Monday of the month at 10.00 am local time
- Next release
 - ▣ February CPI : 28 March 2016

Documents available

- A guide to the Consumer Price Index, Maldives 2012

GUIDE

- Review of the Consumer Price Index, 2012 (Base Period June 2012=100)

REVIEW

www.statisticmaldives.gov.mv/

FOR MORE INFORMATION

- Internet www.statisticsmaldives.gov.mv
- National Accounts and Economic Statistics Section of the National Bureau of Statistics can assist in understanding better the methodology of CPI and inflation.
- Phone: 3349 497
- Email: info@stats.gov.mv
- Fax: 3327351