

▶ EXPORTS BY COUNTRY OF DESTINATION

	(F.O.B Value in US\$ '000)		%		Chn
	2010	2011	2010	2011	
Total Exports	74,203	120,838	100	100	88
Thailand	22,161	17,434	27	32	84
Sri Lanka	14,526	12,866	20	12	0
Italy	6,880	5,821	9	10	83
France	8,077	7,345	11	19	162
U.K	7,077	6,538	10	8	37
Japan	1,288	1,118	2	3	190
Germany	2,097	1,890	3	2	53
Taiwan	2,374	3,206	3	7	3,342
India	2,509	2,325	3	4	2
others	7,214	8,517	10	13	17

Chn for Change

Note: Due to rounding, the total may not tally with the figures

Dollar rates from May 2011 onwards is calculated by the same rate used by department of customs

▶ QUANTUM INDEX FOR SELECTED EXPORT COMMODITIES
(Index Base: 2004 = 100)

	2008	2009	2010
Frozen tuna (MT)	96.32	51.23	43.68
Dried tuna (MT)	60.83	61.95	63.16
Salted dried fish (MT)	84.20	101.86	91.64
Fresh or chilled reef fish (MT)	113.85	157.34	184.19
Fresh or chilled tuna (MT)	103.46	65.91	42.07
Canned fish (MT)	26.38	25.08	18.41

▶ EXTERNAL TRADE



▶ IMPORTS BY COUNTRY OF CONSIGNMENT

Country	(C.I.F Value in US\$ '000)		%		Chn
	2010	2011	2010	2011	
Total Imports	1,095,116	1,442,266	100	100	34
Singapore	196,242	180,191	18	23	63
U.A.E	205,552	183,657	19	22	60
India	126,036	113,502	11	13	20
Malaysia	78,065	73,452	7	7	1
Sri Lanka	63,707	57,186	6	6	31
Thailand	57,525	51,509	5	5	6
Bahamas	62,024	53,979	6	5	-66
Australia	30,390	26,572	3	3	9
China	31,574	28,718	3	3	90
U.S.A	27,932	25,231	3	2	12
Indonesia	20,938	18,627	2	2	-2
Germany	20,159	18,034	2	2	22
France	11,456	9,346	1	1	12
Canada	7,406	6,566	1	1	198
Other Countries	156,110	144,266	15	15	38

Note: Due to rounding, the total may not tally with the figures

Dollar rates from May 2011 onwards is calculated by the same rate used by department of customs

▶ NATIONAL ACCOUNTS

	2009	2010	2011
GDP (at 2003 constant prices)		(Est.)	(Prov.)
GDP (million US\$)	1378	1458	1567
Annual Growth Rate	-4.7	5.7	7.5
GDP per Capita (US\$)	3,583	3,704	3,855
GDP (at current market prices)			
GDP (million US\$)	1,942	2,076	2,030
Published in April 2011			
BALANCE OF PAYMENTS	2009	2010	2011
(In million US\$)			
Trade balance	-682.2	-798.0	-975.8
Exports (f.o.b)	169.0	180.0	172.3
Imports	-851.3	-978.0	-1148.1
Services (net)	373.3	462.2	512.6
Balance on current transfers	-56.7	-66.7	-99.0
Financial Account	329.9	350.1	410.5
Reserves	-20.4	-53.3	-14.8
Current account	-418.7	-462.7	-647.4
Current account (percent of GDP)	-31.8	-31.3	-41.3
figures for 2009 are rev est. 2010 are est. and 2011 are prog. of November 2010			
FINANCE	2009	2010	2011
(In million US\$)		(Rev Est)	(Bud. Est)
Total Revenue and Grants	446.3	513.1	592.5
Total Revenue	413.5	473.8	583.0
Grants	32.8	39.4	9.5
Total expenditure & net lending	852.4	754.6	809.3
Recurrent	682.1	611.8	646.2
Capital	182.0	164.6	176.8
Net Lending	-11.7	-21.8	-13.7
Overall Deficit	-406.1	-241.4	-216.9
Overall Deficit (percent of GDP)	-20.9%	-11.6%	-10.7%
Debt Service Ratio	6.1	5.6	7.5

▶ COMMUNICATION

	2010	2011
Telephone lines		November
*Number of lines	34,684	18630**
Number of lines in other inhabited islands (with Cable Network)		4,079
Number of lines in other inhabited islands (without Cable Network including resorts & uninhabited islands)		1,375
Internet subscription customers	32,309	188468***
Total card phones	631	207
Cellular phone lines (post paid and pre-paid)	494,351	541,974
*Number of lines includes Male', Villigili, Aarah, Hulhuthi & Hulhumale'		
**Number of lines for Nov 2011 excluding DID - Direct Inward Dialling		
***including Mobile Broadband		
TRANSPORT	2009	2010
Land transport	5,038	3,427
Cars	217	122
Motor / auto cycles	4372	2983
Other vehicles	449	322
Sea transport	561	539
Dhoani	255	272
Baththeli	4	4
Launch	159	131
Boat	14	10
Other vessels	129	122
Note: Land and sea transport includes newly registered data		
EXCHANGE RATE		
In April 2011, the exchange rate regime was changed from a fixed rate regime to a band of 20% around a central parity of Rf12.8 per US \$.		
The mid point of exchange rate is 12.85 Rufiyaa and the rate is permitted to fluctuate within the ± 20% band, i.e. between 10.28 Rufiyaa and 15.42 Rufiyaa.		
Exchange Rate, (BML - Oct 10th, 2011)		
	Buying	Selling
US\$: 1.00	15.00 (Rf)	15.42 (Rf)
Average exchange rate		end of period mid rate
US\$: 1.00	11.77 (Rf)	12.24 (Rf)
	2001	2002
	12.80 (Rf)	15.41

EXPORTS: - The value of exports amounted to 120,838 (000' USD) for the month of January to November 2011. This is an 88 percent increase over the same period of previous year.

IMPORTS: - The value of Imports amounted to 1,327,735 (000' USD) for the month of January to November 2011. This is 34 percent increase over the same period of previous year.

MALDIVES AT A GLANCE
January 2012
Department of National Planning
Ministry of Finance and Treasury

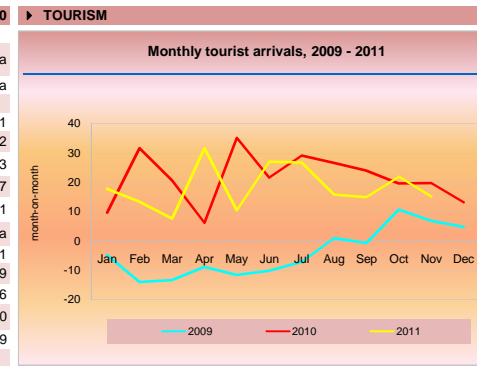
LOCATION, AREA AND CLIMATE			
Location			
Latitude : 7° 6' 35" N to 0° 42' 24" S			
Longitude : 72° 33' 19" E to 73° 46' 13" E			
Area			
Area (including sea)	115,300 sq. km		
E.E.Z	859,000 sq. km		
Climate			
	2010	Nov-10	Nov-11
Annual rainfall (mm)	2,065.2	143.1	213.9
Average daily min. temp. (°C)	25.5	25.3	25.1
Average daily max. temp. (°C)	31.2	30.5	31.0
Lowest temp.	20.2°C	21.8	20
Highest temp.	33.9°C	32.3	32.6
Number of Islands			
Inhabited	1,192		
Uninhabited	194		
Uninhabited	998		
Number of Inhabited Islands by size of Population			
Population	<1000	1000-1999	2000-3999
	4000-9999	10000+	
No. of Islands	131	47	11
	4	1	
Number of Inhabited islands by Area (in hectares)			
Area (in hectares)	1 - 39	40- 79	80- 99
	100 - 199	200 - 300	300 - 520
No. of Islands	115	40	8
	19	9	3

POPULATION		
	2010	2011
Both Sexes (projections for mid-year)	319,738	325,135
Male	161,708	164,349
Female	158,030	160,786
Census 2006		
Male' (35 % of Total population)	103,693	
Atolls	195,275	
Average Annual Growth Rate	Republic	1.69%
(2000 - 2006)	Male'	5.59%
	Atolls	-0.06%

HEALTH	2009	2010
Life expectancy at birth (years)		
Male	72.5	na
Female	74.2	na
Infant mortality rate /000 Live Births		
	11	11
Crude Birth Rate (CBR) /000 Population		
	23	22
Crude Death Rate (CDR) /000 Population		
	4	3
Still Birth Rate (SBR) /000 Live Births		
	7	7
Maternal Mortality Rate (MMR)/000 Live Births		
	1	1
Population per hospital bed		
	231	na
Population per practicing nurse		
	170	171
Population per practicing doctor		
	598	609
Doctors / 10,000 Population		
	17	16
Family Health Workers / 10,000 Population		
	9	10
Community Health Workers / 10,000 Population		
	7	9

TOURISM	2010	2010/2011
	2010	Jan-Dec 2010
Tourist arrivals	791,917	791,917
% change (month-on-month)	148.5	17.6
No. of registered resorts/marinas	97	97
Occupancy rate (Resorts & Hotels)	74.2	76.7
Beds in operation(Resorts & Hotels)	21,541	20,195
% change (month-on-month)	1.4	4.2
Tourism Receipts (million Rf)	602.7	na

TOURISM:- Growth in tourist arrivals showed an increase of 17.6 percent for the period of January to December 2011 compared to the same period of previous year.



EDUCATION

2010

	Students enrolled in the Maldives (Grade 1 to 12)			Teachers	% of untrained teachers	Student teacher ratio
	Total	Male	Female			
Republic	87,600	44,882	42,718	8,012	18	11
Male'	25,565	13,175	12,390	1,757	11	15
Atolls	62,035	31,707	30,328	6,255	20	10

Students enrolled in the Maldives by type of educational institution', 2010 (Grade 1 to 12)

	Republic	%	Male	%	Atolls	%
Total	87,600	100	25,565	100	62,035	100
Government schools	68,004	78	16,285	64	51,719	83
Private schools	8,687	10	2,897	11	5,790	9
Community	10,909	12	6,383	25	4,526	7

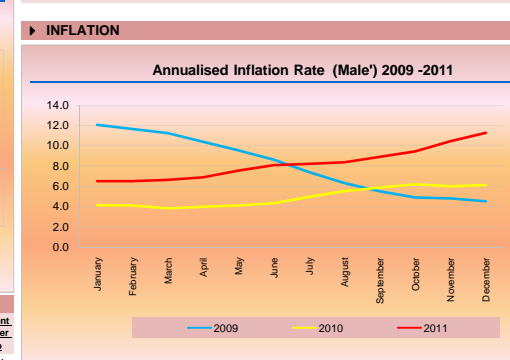
Literacy Rate (Census 2006) 93.83%

INFLATION:- Inflation rate of Male' for December 2011 increased by 1.18 percent compared to the previous month. On an annualised basis Male' Inflation rate increased at 11.27 percent in December 2011.

LANGUAGE

Dhivehi is the national and official language.

English is widely used in education and foreign communication.



CPI INFLATION

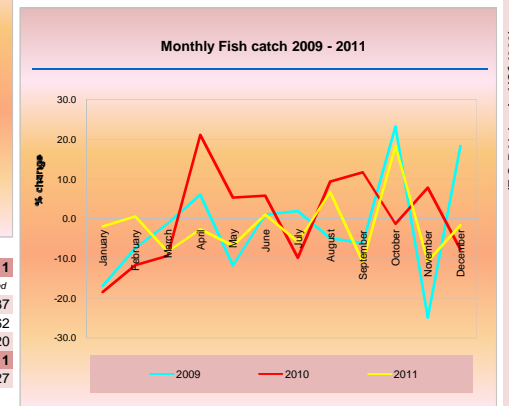
	2009	Jul-11	Jul-11
National	3.98	4.12	6.37
Male'	4.53	4.23	7.62
Atolls	3.48	4.01	5.20
		Dec-11	Dec-11
Male'		1.18	11.27

* For Atolls and National, latest available is for December as data for Atolls is available after a one month lag.

FISHERIES:- Fish catch amounted to 83.1 (000' metric tonnes) for the period of January to December 2011. This is a -5.2 percent decrease over the same period of previous year. Fish exports is increased by 27.4 percent for the period of January to November 2011 when compared to the same period of previous year.

FISHERIES

	2009	2010	2010	2011
Total fish catch ('000 metric tons)	116.9	94.3	87.7	83.1
% change in fish catch	-12.2	-19.3	-24.0	-5.2
		Jan-Dec	Jan-Dec	
Fish Exports ('000 MTs)	39.9	33.4	28.5	36.3
% change in fish exports	-36.7	-16.3	-15.9	27.4
		Jan-Jul	Jan-Jul	
Total Collection ('000 metric tons)	32.2	32.2	16.8	15.5



FISHERIES:- Fish catch amounted to 83.1 (000' metric tonnes) for the period of January to December 2011. This is a -5.2 percent decrease over the same period of previous year. Fish exports is increased by 27.4 percent for the period of January to November 2011 when compared to the same period of previous year.

PRINCIPAL EXPORTS

	2010		2011	
	Jan-Nov	%	Jan-Nov	%
Total Exports	74,203	100	64,159	100
Total fish and fish products	74,174	100	64,130	100
Frozen tuna	1,863	3	1,648	3
Fresh or chilled tuna	54	0	54	0
Dried tuna	20,954	28	18,289	29
Canned fish	1,419	2	1,370	2
Fresh or chilled reef fish	26,084	35	21,272	33
Salted dried fish	5,819	8	5,481	9
Live reef fish	593	1	548	1
Fish meal	2,477	3	2,224	3
Sea cucumber	804	1	804	1
Frozen reef fish	11,277	15	9,784	15
Other marine products	2,830	4	2,646	4
Scrap metals	9	0	9	0
Others	20	0	20	0

Note: steamed Tuna Loins previously classified under canned fish is now classified as other marine product Dollar rates from May 2011 onwards is calculated by the same rate used by department of customs