

▶ EXPORTS BY COUNTRY OF DESTINATION

	(F.O.B Value in US\$ '000)		Chn
	2010	2011	
	Jan-Aug	Jan-Aug	%
Total Exports	74,203	100	100
Thailand	22,161	30	29
Sri Lanka	14,526	20	17
Italy	6,880	9	9
France	8,077	11	10
U.K	7,077	10	9
Japan	1,288	2	3
Germany	2,097	3	3
Taiwan	2,374	3	4
India	2,509	3	4
others	7,214	10	12

Chn for Change

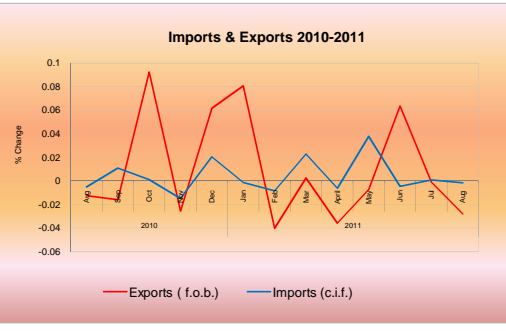
Note: Due to rounding, the total may not tally with the figures

Dollar rates from May 2011 onwards is calculated by the same rate used by department of customs

▶ QUANTUM INDEX FOR SELECTED EXPORT COMMODITIES
(Index Base: 2004 = 100)

	2008	2009	2010
Frozen tuna (MT)	96.32	51.23	43.68
Dried tuna (MT)	60.83	61.95	63.16
Salted dried fish (MT)	84.20	101.86	91.64
Fresh or chilled reef fish (MT)	113.85	157.34	184.19
Fresh or chilled tuna (MT)	103.46	65.91	42.07
Canned fish (MT)	26.38	25.08	18.41

▶ EXTERNAL TRADE



EXPORTS: - The value of exports amounted to 79,095 (000' USD) fob for the month of January to August 2011. This is 75 percent increase over the same period of previous year.

IMPORTS: - The value of Imports amounted to 948,039 (000' USD) cif for the month of January to July 2011. This is 35 percent increase over the same period of previous year.

▶ IMPORTS BY COUNTRY OF CONSIGNMENT

	(C.I.F Value in US\$ '000)		Chn
	2010	2011	
	Jan-Aug	Jan-Aug	%
Total Imports	1,095,116	100	100
Singapore	196,242	18	22
U.A.E	205,552	19	22
India	126,036	12	10
Malaysia	78,065	7	6
Sri Lanka	63,707	6	6
Thailand	57,525	5	4
Bahamas	62,024	6	2
Australia	30,390	3	2
China	31,574	3	2
U.S.A	27,932	3	2
Indonesia	20,938	2	1
Germany	20,159	2	2
France	11,456	1	1
Canada	7,406	1	1
Other Countries	156,110	14	15

Note: Due to rounding the total may not tally with the figures

Dollar rates from May 2011 onwards is calculated by the same rate used by department of

▶ NATIONAL ACCOUNTS

	2009	2010	2011
GDP (at 2003 constant prices)	(Est.)	(Prov.)	(Proj.)
GDP (million US\$)	1387	1524	1650
Annual Growth Rate	-6.5	9.9	8.3
GDP per Capita (US\$)	3,605	3,872	4,061
GDP (at current market prices)			
GDP (million US\$)	1,742	1,908	2,132
Published in April 2011			
BALANCE OF PAYMENTS	2009	2010	2011
(In million US\$)			
Trade balance	-682.2	-798.0	-975.8
Exports (f.o.b)	169.0	180.0	172.3
Imports	-851.3	-978.0	-1148.1
Services (net)	373.3	462.2	512.6
Balance on current transfers	-56.7	-66.7	-99.0
Financial Account	329.9	350.1	410.5
Reserves	-20.4	-53.3	-14.8
Current account	-418.7	-462.7	-647.4
Current account (percent of GDP)	-24.0	-24.2	-30.4
Figures for 2009 are rev est 2010 are est. and 2011 are proj. of November 2010			
FINANCE	2009	2010	2011
(In million US\$)		(Rev Est)	(Bud. Est)
Total Revenue and Grants	446.3	513.1	592.5
Total Revenue	413.5	473.8	583.0
Grants	32.8	39.4	9.5
Total expenditure & net lending	852.4	754.6	809.3
Recurrent	682.1	611.8	646.2
Capital	182.0	164.6	176.8
Net Lending	-11.7	-21.8	-13.7
Overall Deficit	-406.1	-241.4	-216.9
Overall Deficit (percent of GDP)	-23.3%	-12.7%	-10.2%
Debt Service Ratio	6.1	5.6	7.5

	2010	2011
COMMUNICATION		
Telephone lines		August
Number of lines	34,684	48,053
Number of lines in other inhabited islands	12,131	12,518
Resorts	980	980
Un-inhabited islands	224	224
Internet subscription customers	32,309	76,934
Total card phones	631	337
Cellular phone lines (post paid and pre-paid)	494,351	539,254
*Number of lines includes Male', Villigil, Aarah, Hulhule & Hulhumale'		
TRANSPORT	2009	2010
Land transport	5,038	3,427
Cars	217	122
Motor / auto cycles	4372	2983
Other vehicles	449	322
Sea transport	561	539
Dhoani	255	272
Baththeli	4	4
Launch	159	131
Boat	14	10
Other vessels	129	122
Note: Land and sea transport includes newly registered data		
EXCHANGE RATE		
In April 2011, the exchange rate regime was changed from a fixed rate regime to a band of 20% around a central parity of Rf12.8 per US \$.		
The mid point of exchange rate is 12.85 Rufiyaa and the rate is permitted to fluctuate within the ± 20% band, i.e between 10.28 Rufiyaa and 15.42 Rufiyaa.		
Exchange Rate, (BML - Oct 10th, 2011)		
	Buying	Selling
US\$: 1.00	15.00 (Rf)	15.42 (Rf)
Average exchange rate		end of period mid rate
1995-2001	2001	2002
US\$: 1.00	11.77 (Rf)	12.80 (Rf)

MALDIVES
AT A GLANCE

September
2011

Department of National Planning
Ministry of Finance and Treasury

► **LOCATION, AREA AND CLIMATE**

Location
 Latitude : 7° 6' 35" N to 0° 42' 24" S
 Longitude : 72° 33' 19" E to 73° 46' 13" E

Area

Area (including sea) 115,300 sq. km
 E.E.Z 859,000 sq. km

Climate

	2010	Aug-10	Aug-11
Annual rainfall (mm)	2,065.2	211.0	186.4
Average daily min. temp. (°C)	25.5	25.3	25.1
Average daily max. temp. (°C)	31.2	30.8	30.9
Lowest temp.	20.2°C	22	20.4
Highest temp.	33.9°C	32.9	32.8

Number of Islands

Inhabited	194
Uninhabited	998

Number of Inhabited Islands by size of Population

Population	<1000	1000-1999	2000-3999	4000-9999	10000+
No. of Islands	131	47	11	4	1

Number of Inhabited islands by Area (in hectares)

Area (in hectares)	1 - 39	40 - 79	80 - 99	100 - 199	200 - 300	300 - 520
No. of Islands	115	40	8	19	9	3

► **POPULATION**

	2010	2011
Both Sexes (projections for mid-year)	319,738	325,135
Male	161,708	164,349
Female	158,030	160,786

Census 2006

	2006
Male' (35 % of Total population)	103,693
Atolls	195,275

Average Annual Growth Rate Republic 1.69%

(2000 - 2006) Male' 5.59%

Atolls -0.06%

► **HEALTH**

Life expectancy at birth (years)

Male	72.5	na
Female	74.2	na

Infant mortality rate /000 Live Births 11 11

Crude Birth Rate (CBR) /000 Population 23 22

Crude Death Rate (CDR) /000 Population 4 3

Still Birth Rate (SBR) /000 Live Births 7 7

Maternal Mortality Rate (MMR)/000 Live Births 1 1

Population per hospital bed 231 na

Population per practicing nurse 170 171

Population per practicing doctor 598 609

Doctors / 10,000 Population 17 16

Family Health Workers / 10,000 Population 9 10

Community Health Workers / 10,000 Population 7 9

► **TOURISM**

	2010	2010/2011
Tourist arrivals	791,917	506,179
% change (month-on-month)	58.8	18.0
No. of registered resorts/marinas	97	85
No. of operational resorts/marinas	90	90
Occupancy rate (Resorts & Hotels)	74.2	75.5
Beds in operation(Resorts & Hotels)	21,541	20,169
% change (month-on-month)	1.3	3.7
Tourism Receipts (million Rf)	602.7	na

Students enrolled in the Maldives (Grade 1 to 12)

	2010	Jan-Aug2010	Jan-Aug2011
Total	87,600	44,882	42,718
Male'	25,565	13,175	12,390
Atolls	62,035	31,707	30,328

Teachers 6,012 18 11

% of untrained teachers 11 15

Student teacher ratio 10 10

Students enrolled in the Maldives by type of educational institution', 2010

	Republic	%	Male	%	Atolls	%
Total	87,600	100	25,565	100	62,035	100
Government schools	68,004	78	16,285	64	51,719	83
Private schools	8,687	10	2,897	11	5,790	9
Community	10,909	12	6,383	25	4,526	7
Literacy Rate (Census 2006)			93.83%			

Government schools 68,004 78 16,285 64 51,719 83

Private schools 8,687 10 2,897 11 5,790 9

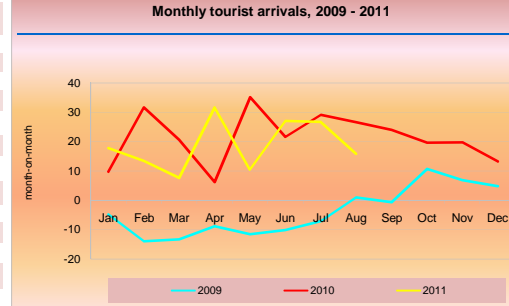
Community 10,909 12 6,383 25 4,526 7

Literacy Rate (Census 2006) 93.83%

TOURISM:- Growth in tourist arrivals showed an increase of 18 percent for the period of January to August 2011 compared to the same period of previous year.

► **TOURISM**

Monthly tourist arrivals, 2009 - 2011



► **EDUCATION**

Students enrolled in the Maldives (Grade 1 to 12)

	2010	Jan-Aug2010	Jan-Aug2011
Total	87,600	44,882	42,718
Male'	25,565	13,175	12,390
Atolls	62,035	31,707	30,328

Teachers 6,012 18 11

% of untrained teachers 11 15

Student teacher ratio 10 10

Students enrolled in the Maldives by type of educational institution', 2010

	Republic	%	Male	%	Atolls	%
Total	87,600	100	25,565	100	62,035	100
Government schools	68,004	78	16,285	64	51,719	83
Private schools	8,687	10	2,897	11	5,790	9
Community	10,909	12	6,383	25	4,526	7
Literacy Rate (Census 2006)			93.83%			

Government schools 68,004 78 16,285 64 51,719 83

Private schools 8,687 10 2,897 11 5,790 9

Community 10,909 12 6,383 25 4,526 7

Literacy Rate (Census 2006) 93.83%

INFLATION:- Inflation rate of Male' for August 2011 increased by 0.27 percent compared to the previous month. On an annualised basis Male' Inflation rate increased at 8.30 percent in August 2011.

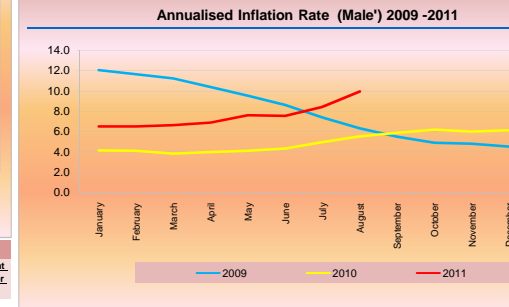
► **LANGUAGE**

Dhivehi is the national and official language.

English is widely used in education and foreign communication.

► **INFLATION**

Annualised Inflation Rate (Male') 2009 -2011



► **CPI INFLATION**

	2009	May-11	May-11
National	3.98	4.12	6.37
Male'	4.53	4.23	7.62
Atolls	3.48	4.01	5.20
		Aug-11	Aug-11
Male'		0.27	8.30

* For Atolls and National, latest available is for December as data for Atolls is available after a one month lag.

FISHERIES

Total fish catch ('000 metric tons) 116.9 94.3 46.8 50.3

% change in fish catch -12.2 -19.3 -28.0 7.5

Total Collection ('000 metric tons) 32.2 32.2 16.8 15.5

Fish Exports ('000 MTs) 39.9 33.4 21.5 22.7

% change in fish exports -36.7 -16.3 -13.8 5.1

► **FISHERIES**

Total fish catch ('000 metric tons) 116.9 94.3 46.8 50.3

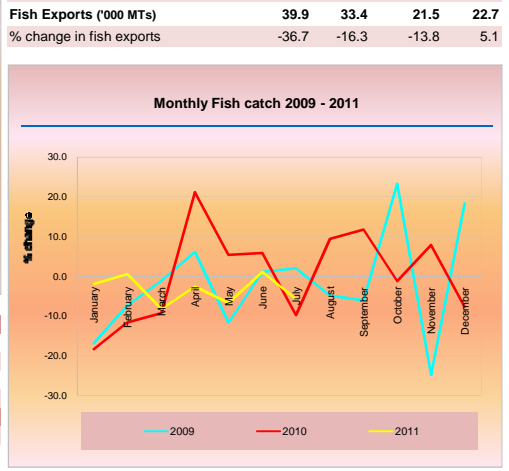
% change in fish catch -12.2 -19.3 -28.0 7.5

Total Collection ('000 metric tons) 32.2 32.2 16.8 15.5

Fish Exports ('000 MTs) 39.9 33.4 21.5 22.7

% change in fish exports -36.7 -16.3 -13.8 5.1

Monthly Fish catch 2009 - 2011



► **PRINCIPAL EXPORTS**

	2010	2010	2010	2011
Total Exports	74,203	100	45,302	75
Total fish and fish products	74,174	100	45,276	75
Frozen tuna	1,863	3	1,095	2
Fresh or chilled tuna	54	0	32	0
Dried tuna	20,954	28	11,807	26
Canned fish	1,419	2	1,146	3
Fresh or chilled reef fish	26,084	35	16,278	36
Salted dried fish	5,819	8	4,164	9
Live reef fish	593	1	394	1
Fish meal	2,477	3	1,942	4
Sea cucumber	804	1	401	1
Frozen reef fish	11,277	15	6,240	14
Other marine products	2,830	4	1,777	4
Scrap metals	9	0	9	0
Others	20	0	17	0

Note: Stained Tuna Loin previously classified under canned fish is now classified as other marine product

Dollar rates from May 2011 onwards is calculated by the same rate used by department of customs

FISHERIES:- Fish catch amounted to 50.4 (000' metric tonnes) for the period of January to July 2011. This is a 7.7 percent increase over the same period of previous year. Fish exports is increased by 5.1 percent for the period of January to August 2011 when compared to the same period of previous year.