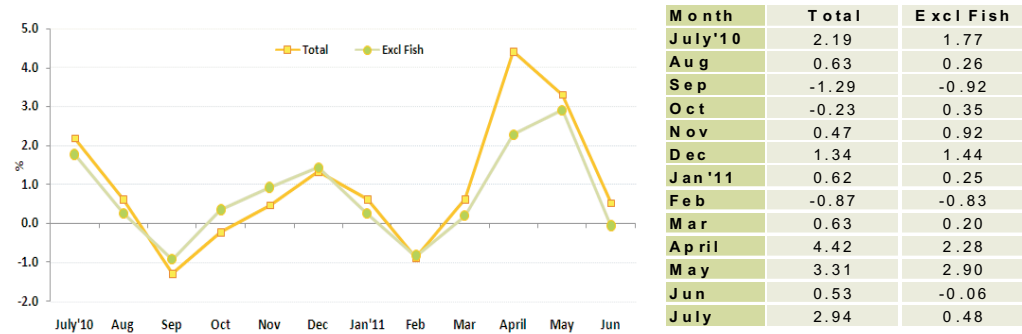


1. Inflation Rate of Male' (Monthly): July 2011 compared to June 2011)

To measure month to month inflation, this month's index is compared with the previous month inflation (for e.g : July '11 and June '11). The monthly inflation for July 2011 is 2.94% and 0.48% is the total excluding fish.

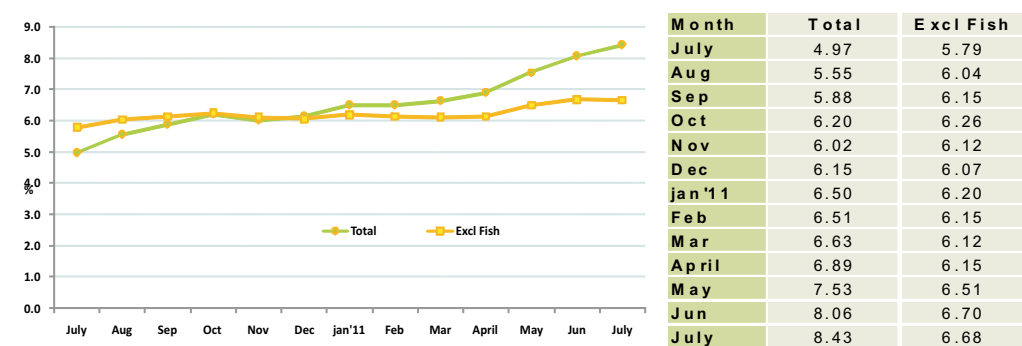
Figure 7. Monthly Inflation Rate of Male', July 2010 - July 2011 (compared to the previous month)



2. Inflation Rate of Male' (Annualized): August '10 to July '11 / August '09 to July '10)

The annualized inflation rate for any month compares the average for the 12 monthly indices with that of the preceding 12 months (Eg: August '10 to July '11 / August '09 to July '10). This index shows an annual inflation of 8.43%, and the annualized total excluding fish is 6.68%.

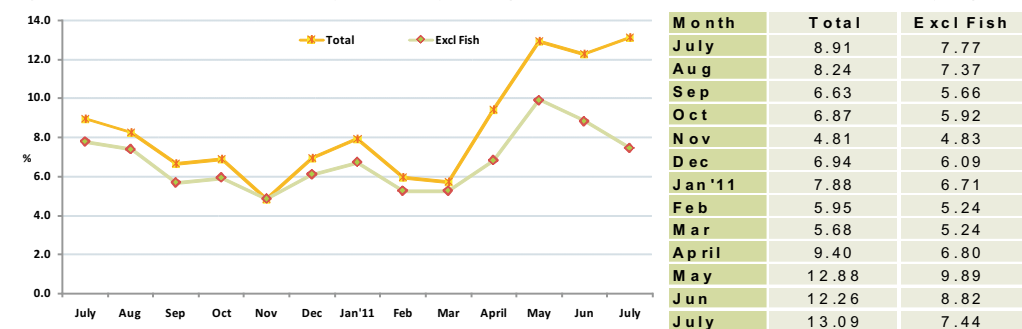
Figure 8. Inflation Rate of Male', July 2010 - July 2011 (compared to the past 12 month period)



3. Inflation Rate of Male' (month on month): July '11 / July '10)

To measure the month on month change at one point in time, the index of the month is compared with that of the same month in the preceding year (Eg: July '11 / July '10). The month on month index for July shows an inflation of 13.09% and the inflation excluding fish is 7.44%.

Figure 9. Inflation Rate of Male' July 2010 - July 2011 (compared to the same month of the previous year)



CONSUMER PRICE INDEX - MALE'

Department of National Planning
Ministry of Finance and Treasury

July 2011

Consumer Price Index-Male', July 2011

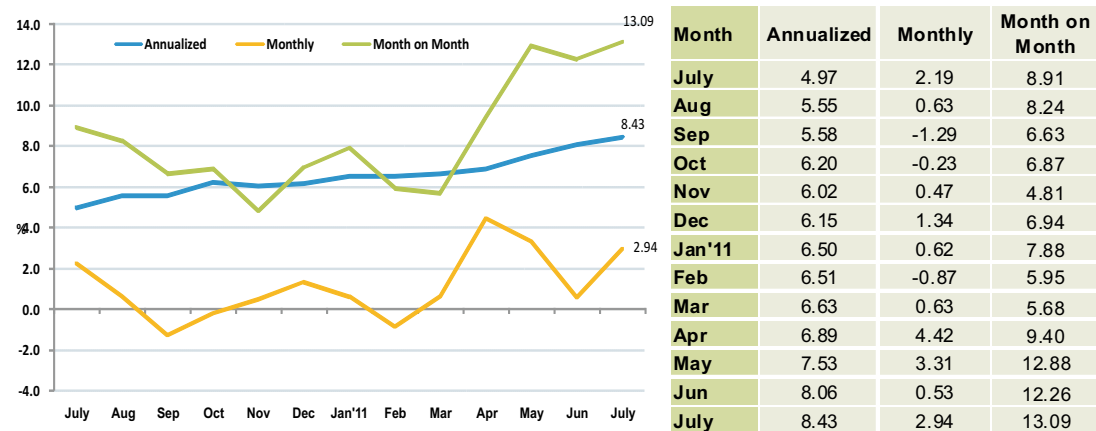
Inflation Rate of Male'

The Consumer Price Index (CPI) for Male' rose at an annualized rate of 8.43 percent in July 2011. The inflation was driven mainly by food & beverages, fish and housing, water, electricity, gas & other fuels categories.

Monthly CPI of July 2011 increased by 2.94 percent compared to June 2011. The inflation was mainly driven from fish category. Food & beverages and clothing & footwear categories also contributed to this inflation.

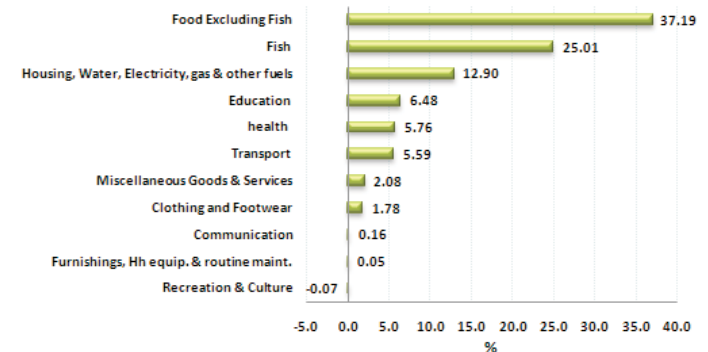
When July 2011 is compared to July 2010, the consumer price index increased by 13.09 percent. Fish category showed the highest inflation followed by tobacco and food & beverages categories.

Figure 1: Inflation rates of Male', July 2011



Sources of changes in CPI - Annualized

Figure 2: Sources of changes in July CPI - Annualized



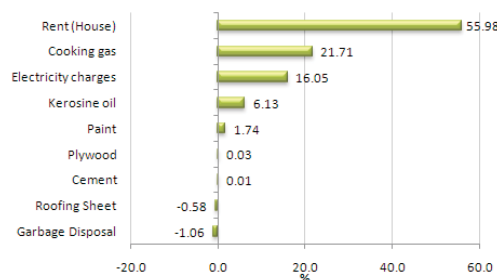
Major contributors to the change in the CPI - Annualized basis

The largest upward contribution to the change in the annualized CPI came from food & beverages which contributed 37%. Coconut and mango prices went up by 39% and 30% respectively. Other items in this category which showed a price increase above 20% were garlic, aracanut, watermelon, orange, dhal and green chilli. Items which registered a price increase between 15% and 20% were onion, marjerine, baby food - purity, chicken drumsticks, cabbage, milo, candy, cooking oil, tea leave - tea bag, canned mixed fruits.

The second largest upward contribution to the change in annualized CPI came from fish category with 25%. Skipjack tuna reef fish and other tuna went up by 42%, 35% and 32% respectively. Additionally smoked fish canned tuna fish and fish paste also contributed to this hike.

The third largest upward contribution to the change in the annualized CPI came from housing, water, electricity, gas & other fuels category by 13%. Rent prices contributed highest to inflation of this category with 55%. Rent prices increased by 5%. Cooking gas contributed 22% to this hire where cooking gas prices rose by 14%. Electricity prices contributed 16% to inflation of housing category. This is due to the inclusion of fuel sur-charges to the electricity component.

Figure 3: Products contributing to the inflation: Household, water, electricity, gas & other fuels category - Annualized



Change in the CPI - Month on Month

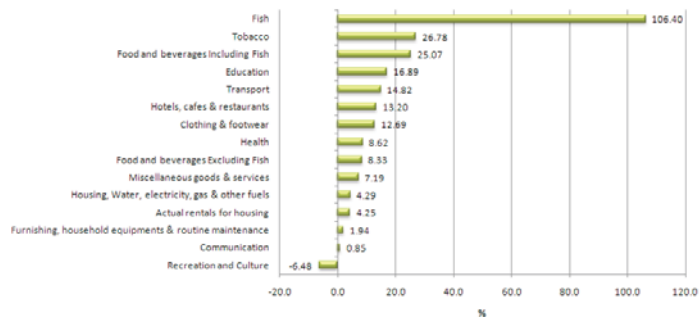
When July 2011 was compared to July 2010 most of the categories recorded an inflation. Fish category showed the highest inflation with 106% followed by tobacco and food & beverages which registered 27% and 25% respectively.

Fish paste and skipjack tuna prices increased significantly when compared to July 2010. Additionally reef fish and smoked fish prices went up by 78% and 59% respectively when the two point of time were compared. Dried fish chips, other tuna and canned fish prices also contributed to this hike.

As for tobacco, aracanut prices increased by 108% (from Rf. 42.50 to Rf. 88.33) when the two point of time were compared.

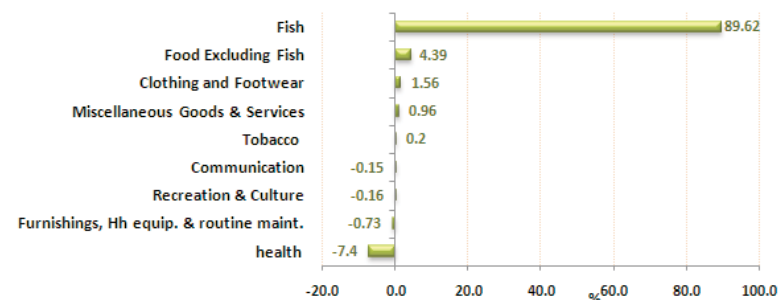
Food item which contributed most to the inflation were tea leave-tea bag and cooking oil which increased by 62% and 60% respectively. Additionally onion, canned pineapple and coke prices also went up by 49%, 43% and 42% respectively. Other food items which showed a price difference above 30% were milo, marjerine, biscuits, frozen chicken, dairy milk, chicken sausage, apollo, egg, curry powder and canned mixed fruits. However githeyo mirus (local chilli), green chilli, mango and cucumber prices decreased by 50%, 47%, 41% and 39% respectively. Additionally ginger, watermelon, dates, garlic, flour, banana and basmati - rice prices also decreased when the two point of time were compared.

Figure 4: Inflation Rates by Major sectors - Month on Month basis



Main contributions to the change in the CPI - Monthly basis

Figure 5: Sources of changes in July 2011 CPI - monthly



Fish category pulled up the monthly inflation the most by contributing 90%. Fish paste prices increased significantly in July. Dried fish chips prices went up by 41% in July 2011 when compared to June 2011. Food & beverages category also pulled up the overall monthly inflation by 4% followed by clothing & footwear and miscellaneous goods & services categories which contributed 2% and 1% respectively. However, health category contributed a decrease of 7% in July.

As for clothing & footwear men's office shoes prices went up by 13% and both men's sandals and women's jeans prices went up by 9% in July 2011 when compared to June 2011.

The items which contributed most to the inflation of miscellaneous goods & services category were facial cream, cologne, shampoo and baby diapers.

As for health category, some of the clinic brought down their prices to the market value, hence the prices of dental services, doctor's consultant fee declined. In addition prices of HB test and X-ray also declined. While these decrease were the major factors contributing to the decline in health index.

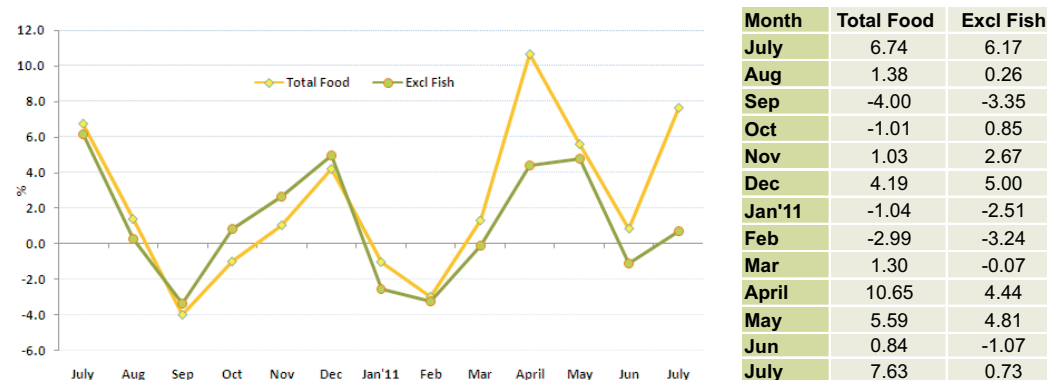
Monthly inflation rate of food and beverages category

The monthly inflation rate for the food & beverages category is 7.63%. Food excluding fish category also showed an inflation of 0.73%.

As for food category cabbage prices went up by 58% in July when compared to June. Onion and canned pineapple prices went up by 42% and 37% respectively. Other items which showed a price increase above 15% were egg and tea bags. However, water melon and orange prices decreased by 36% and 31% respectively. Additionally cucumber, garlic and green chilli prices fell by 25%, 23% and 17% respectively.

The items which contributed most to the 30% inflation of the fish category were fish paste, dried fish chips, skipjack tuna and other tuna.

Figure 6: Inflation Rates of Food and Beverages - Monthly basis



Annex 1: Average Prices of Items which showed a significant change, CPI Male', July 2011

Description	Specification	Unit	Annualised			Monthly			Month on Month	
			Average 12 monthly Price			Average Price		% Chn	Av Price	% Chn
			Aug 2009-July 2010	Aug 2010-July 2011	% Chn	June 2011	July 2011	Jun 2011 / July 2011	July 2010	July 2011/ July 2010
Food										
Biscuits	Cream Cracker, Khong Guan	200 gram, packet	8.43	9.91	14.89	11.33	12.20	7.65	8.77	39.07
Biscuits	Marie Biscuit	400 Gram	15.26	16.20	5.79	17.58	19.00	8.06	15.83	20.00
Bread	Small Bread	1 Piece	9.97	10.96	9.01	12.32	12.25	-0.55	10.00	22.50
Bread	Large	1 Piece	19.95	21.31	6.35	23.50	23.27	-0.98	20.00	16.35
Bread spread	Chocolate Crumpy	225 Gram	35.59	36.35	2.09	36.25	36.00	-0.69	36.82	-2.22
Butter bun	butter buns / Packed	1 Piece	3.57	3.67	2.78	4.00	4.05	1.25	3.50	15.71
Bun	Small Buns/ Un packed	1 Piece	0.49	0.48	-2.26	0.56	0.54	-2.99	0.46	18.03
Rice-Basmati	Basmati Rice / Pre Packed	1 kg	27.17	26.19	-3.73	25.00	24.46	-2.15	26.92	-9.12
Rice	Ordinary Rice / loose	1 kg	4.72	4.63	-1.95	4.32	4.35	0.73	4.75	-8.46
Flour	Ordinary Flour / loose	1 kg	4.04	3.82	-5.71	3.41	3.42	0.53	4.06	-15.72
Noodles	Mamee Noodles / Packet	85 Gram	3.54	3.66	3.34	4.17	4.13	-0.92	3.42	21.01
Corn flake	Celloggs / Wheat and Honey	300 Gram	38.07	42.60	10.61	40.71	42.29	3.86	43.75	-3.35
Chicken sausage	Chicken Sausage / Packed	340 Gram	14.85	18.23	18.52	20.63	20.17	-2.23	14.80	36.26
Chicken drumsticks	Chicken drumstick	1 kg	44.85	54.12	17.14	61.26	59.33	-3.14	51.56	15.09
Frozen chicken	Frozen chicken / Whole chicken / P	1 kg	37.48	41.14	8.91	49.69	51.77	4.18	37.73	37.22
Egg	Chicken egg / Imported	1 Piece	1.43	1.58	9.40	1.65	2.00	21.52	1.52	31.51
Frozen beef	Frozen Beef	1 kg	46.05	50.61	9.00	57.29	57.00	-0.51	48.11	18.48
Baby food - cereal	Nestum / Wheat & Honey	250 Gram / Tin	33.69	39.36	14.42	46.83	43.50	-7.10	35.27	23.32
Baby food - cereal	Promina / Banana	250 Gram / Packet	16.63	17.18	3.19	18.48	18.50	0.12	16.70	10.78
Baby food - fruit	Purity / Fruit / Secound food	200ml, Bottle	18.00	21.87	17.68	23.83	23.75	-0.35	19.63	21.02
Baby milk powder	Lactogen	450 Gram, tin	68.02	65.42	-3.98	67.07	70.88	5.67	65.67	7.93
Baby milk powder	Anflace	450 Gram / Tin	127.73	136.37	6.33	164.36	167.67	2.01	131.17	27.83
Baby milk powder	S.M.A / Progress	450 Gram / Tin	112.36	111.91	-0.40	122.85	123.33	0.39	110.00	12.12
Milk powder	Coast	1800 Gram, tin	196.49	211.30	7.01	229.80	250.70	9.09	196.30	27.71
Milk powder	Anchor Milk	1800 Gram / Tin	195.87	218.56	10.38	248.42	251.88	1.39	195.80	28.64
Milk powder	Nido	1800 Gram / Tin	193.12	206.59	6.52	242.50	225.89	-6.85	188.64	19.75
Condensed milk	Double Peach	397Gram, tin	11.43	11.92	4.09	13.08	14.15	8.24	12.09	17.06
Condensed milk	Cow Bell	397 Gram / Tin	10.58	11.24	5.85	12.60	12.79	1.47	10.86	17.69
Dairy milk	Dutch Lady / Milk Pack / Small	250 Ml	7.00	7.55	7.30	9.09	9.43	3.72	6.90	36.65
Majerine	Daisy brand tub / Small	250 Gram	17.45	21.69	19.55	23.75	23.92	0.70	17.17	39.32
Cooking oil	Bemoli Oil	2 Ltr	44.57	53.53	16.75	68.89	68.50	-0.56	42.78	60.13
Cooking oil	Sun Flower Oil	2 Ltr	83.56	77.13	-8.34	95.22	96.83	1.70	76.67	26.30
Apple	Apple	1 Piece	4.66	5.04	7.60	5.31	4.65	-12.32	4.96	-6.14
Banana	Bonthirai	1 Piece	1.95	2.17	10.11	2.15	1.83	-14.69	2.14	-14.33
Orange	Fresh Orange	1 Piece	3.17	4.09	22.46	4.67	3.21	-31.25	3.09	3.80
Watermelon	Water melon (fresh Localy produce	1 kg	12.12	15.97	24.12	18.21	11.60	-36.31	16.71	-30.60
Mango	Fresh / local / Mango	1 Piece	6.75	9.67	30.17	6.67	6.67	0.00	12.50	-46.67
Canned mixed fruits	Canned Mixed Fruit / Small	398 Gram	23.22	27.44	15.39	31.20	31.50	0.96	24.20	30.17
Canned pine Apple	Canned Pine AQPple	567 Gram	15.29	15.98	4.35	15.86	21.67	36.64	15.20	42.54
Dates	Dates without nuts	200 Gram /pack	32.51	29.97	-8.50	26.67	27.50	3.13	34.50	-20.29
Coconut	Medium size / Coconut	1 Piece	4.16	6.83	39.14	6.65	6.23	-6.28	6.76	-7.77
lemon	Imported lemon	1 Piece	1.61	1.87	13.87	1.88	1.85	-2.04	2.00	-7.69
Green chilli	Green Chilli / Imported	100 Gram	7.20	9.07	20.67	7.07	5.80	-17.91	11.00	-47.27
Gotheyo Mirus	Dhivehi mirus	1 Piece	2.86	2.93	2.20	2.59	2.53	-2.44	5.06	-50.07
Cucumber	Fresh Cucumber	1 kg	27.94	27.86	-0.30	30.23	22.67	-25.02	38.64	-41.33
Carrot	Fresh Carrot	1 kg	24.47	26.72	8.39	24.38	24.08	-1.24	26.36	-8.65
Cabbage	Fresh Cabbage	1 kg	23.80	28.71	17.10	23.69	37.42	57.93	35.00	6.90
Beans	Fresh Beans	1 kg	50.10	51.59	2.90	53.62	56.25	4.91	51.36	9.51
Garlic	Garlic	100 Gram	5.22	7.42	29.60	6.66	5.13	-23.04	6.18	-17.04
Ginger	Ginger	100 Gram	5.07	5.46	7.20	4.61	4.14	-10.08	6.17	-32.82
Potato	Imported Potato	1 kg	12.31	12.74	3.44	12.75	12.93	1.43	10.42	24.04
Canned baked beans	Baked Beans / Canned	400 Gram	10.29	11.44	10.09	12.63	12.69	0.50	11.00	15.34
Canned green peas	Green peas / Processed peas / Car	440 Gram	8.26	8.55	3.39	8.63	9.18	6.46	8.23	11.60
Dhal	Yellow Coloured Dhal	1 kg	35.37	44.96	21.34	46.44	46.91	1.01	43.17	8.67
Sugar	Dhoabraali Hakuru	1 kg	4.80	4.67	-2.73	4.55	4.41	-3.09	4.81	-8.46
Curry powder	Curry Powder / Antelope brand / Cε	340 Gram	30.40	31.54	3.64	34.05	35.00	2.79	29.82	17.38
Curry powder	Fish curry powder / Packed locally	50 Gram	4.93	5.32	7.21	5.91	6.09	3.08	4.92	23.88
Curry powder	Chicken curry powder / Packed loc	50 Gram	4.96	5.34	6.96	5.95	6.45	8.40	4.92	31.28
Chilli powder	Dried Chilli (Hikimirus) / Loose	1 kg	51.00	54.82	6.96	60.00	60.00	0.00	52.00	15.38
Chilli powder	Chillie Powder / Packed Locally	50 Gram	4.95	5.33	7.08	6.00	6.33	5.56	4.89	29.55
Onion	Imported Onion	1 kg	15.68	19.53	19.74	11.79	16.79	42.42	11.27	48.95
Tea leaves-tea bag	Today's Taste / 100 tea bag	200 Gram	22.87	26.44	13.50	30.55	32.00	4.76	24.18	32.33
Tea leaves-tea bag	Melesna / 100 tea bag	200 Gram	23.68	28.31	16.35	32.33	38.33	18.56	23.67	61.97
Tea leaves-tea bag	Akbar / 100 tea bag	200 Gram	22.77	26.77	14.97	31.80	34.33	7.98	24.60	39.57
Coffee	Nescafe, Cafe' soluble coffee / Can	50 Gram	29.74	32.68	9.00	38.55	38.18	-0.94	30.64	24.63
Juice-Sunquick	Sunquick / Orange Juice / Bottled	840 Ml	55.55	58.17	4.49	63.58	63.58	0.00	55.75	14.05
Juice-FosterClark	FosterClark / Powdered Juice / Botl	750 Gram	50.77	56.30	9.82	61.70	63.00	2.11	55.42	13.68
Milo	Nestle Milo Powder / Canned	400 Gram	48.66	58.51	16.84	70.25	70.80	0.78	50.58	39.97
Apollo	Milk choco / Wafer cream	1 Piece	1.34	1.48	9.12	1.79	1.90	6.41	1.44	32.17

Description	Specification	Unit	Annualised			Monthly			Month on Month	
			Average 12 monthly Price			Average Price		% Chn	Av Price	% Chn
			Aug 2009-July 2010	Aug 2010-July 2011	% Chn	June 2011	July 2011	Jun 2011 / July 2011	July 2010	July 2011 / July 2010
Candy	Solano	1 Piece / 25 Gram	0.36	0.43	16.75	0.36	0.39	6.23	0.42	-6.83
Ice cream	Chocolate Ice cream / Tub	1 Ltr	43.45	47.68	8.88	50.14	51.75	3.21	44.78	15.57
Coke	Dubai coke / Canned	300 Ml	6.93	7.65	9.39	9.01	9.91	9.94	7.00	41.56
Coke	Coka Cola / Large Bottle	1500 Ml	22.78	25.14	9.39	27.91	28.00	0.33	23.40	19.66
Aracanut	Raw Aracanut / Uncut / Loose	1 kg	42.75	59.24	27.84	86.25	88.33	2.42	42.50	107.84
Cigarette	Marlboro	20 Piece / 1 Pack	19.65	20.26	3.04	22.33	22.11	-1.00	19.67	12.43
Cigarette	Benson	20 Piece / 1 Pack	18.84	19.56	3.64	22.33	22.11	-1.00	18.50	19.52
Saltish short-eats	Handulu gulha	1 Piece	1.35	1.53	11.36	2.00	2.00	0.00	1.33	50.00
Sweet short-eats	Foni folhi	1 Piece	1.76	2.00	11.81	2.00	2.00	0.00	2.00	0.00
Meals (lunch packet)	4 roshi / 1 fish curry / 1 black tea / 1	Per person	15.50	17.25	10.14	18.00	18.00	0.00	17.00	5.88
Meals (lunch packet)	4 roshi / 1 chickencurry / 1 black tea	Per person	20.00	25.42	21.31	39.00	33.00	-15.38	20.00	65.00
Pizza	Tuna Mushroom	whole pizza	63.33	68.47	7.51	78.33	78.33	0.00	63.33	23.68
Restaurant meals	Fish & Chips	1 plate	45.75	48.00	4.69	50.00	50.00	0.00	45.75	9.29
Restaurant meals	Nasi Goreng	1 plate	49.67	51.89	4.28	55.00	55.00	0.00	49.67	10.74
Jam	Tova Brand / Bottle	450 Gram	19.64	22.50	12.71	22.70	22.00	-3.08	21.50	2.33
Sauce	Tomato Sauce / life Brand	320 Gram / Bottled	9.86	10.40	5.26	11.09	11.29	1.76	10.32	9.38
Sauce	Chillie Sauce / life Brand	335 Gram / Bottled	10.61	11.69	9.22	12.95	13.08	1.03	10.95	19.48
Sauce	Chillie & Garilic Sauce / life Brand	320 Gram / Bottled	11.16	12.77	12.59	14.13	14.13	0.00	11.55	22.34
Fish										
Canned fish in oil	Felivaru canned fish / Chunk in Oil	185 Gram	13.57	16.28	16.61	17.39	18.23	4.81	15.25	19.52
Canned fish in brine	Felivaru Canned Fish / Chunk in Br	185 Gram	12.01	14.78	18.74	15.91	16.67	4.73	13.23	26.00
Dried fish chips	Pre packed Dried fish chips	100 Gram	11.13	10.87	-2.33	10.67	15.00	40.63	10.63	41.18
Fish paste	Fasmeeru Rihaakuru / Bottled	450 Gram	33.92	39.55	14.23	28.00	100.00	257.14	31.33	219.15
Smoked fish	Smoked Fish (Valhoamas) / Loose	1 kg	50.49	71.67	29.55	114.32	91.98	-19.54	58.01	58.56
Skipjack tuna	Godha / Kalhubilamas	1 kg	22.78	39.17	41.83	61.41	69.78	13.63	31.58	120.96
Other tuna	Other Tuna / Latti	1 kg	17.20	25.20	31.73	34.90	38.91	11.49	28.52	36.43
Reef fish	Reef Fish / Maaniya mas	1 kg	14.79	22.81	35.18	35.39	36.51	3.16	20.55	77.66
Clothin and Footwear										
Mens t-shirt	Men Shirt / Most Sold Brand	1 Piece	164.10	161.60	-1.55	175.00	172.50	-1.43	148.33	16.29
Mens shirt	Men T-Shirt / Most Sold material	1 Piece	159.44	173.96	8.34	182.50	182.50	0.00	148.33	23.03
School uniform	School Uniform / Boys / Medium siz	1 Piece	46.00	70.21	34.48	102.50	102.50	0.00	46.00	122.83
Mens trousers	Men's Trousers / Long	1 Piece	174.86	193.47	9.62	220.00	235.00	6.82	175.00	34.29
Mens jeans	Mend's Jeans / Most Sold Material	1 Piece	213.75	228.01	6.25	241.06	260.00	7.86	215.00	20.93
Womens jeans	Women's Jeans / Fade	1 Piece	211.11	204.58	-3.19	201.67	220.00	9.09	206.67	6.45
Womens t-shirt	Ladies T - shirt / Most sold Brand	1 Piece	154.17	156.94	1.77	166.67	180.00	8.00	150.00	20.00
Dress material	Most often sold material / Plane / F	1 Muh	25.00	25.54	2.11	27.47	28.00	1.92	25.00	12.00
Tailoring women's blouse	Sweing of blouse	1 Piece	66.67	71.04	6.16	75.00	75.00	0.00	70.00	7.14
School shoes	School Shoes/ Girl / Most recently s	1 Pair	134.31	141.53	5.10	151.67	155.00	2.20	135.00	14.81
Nylon faivaan	Size 10	1 Pair	12.64	12.74	0.74	12.90	13.92	7.88	12.00	15.97
Men's shoes	Office Shoes	1 Pair	252.27	257.08	1.87	243.33	275.00	13.01	261.67	5.10
Men's sandals	Most recently sold brand	1 Pair	148.19	152.92	3.09	161.67	176.67	9.28	151.67	16.48
Housing										
Electricity charges	300 Units	Total inculuding fuel c	-	1385.00	-	-	1385.00	-	0.00	-
Electricity charges	500 Units	Total inculuding fuel c	-	2415.00	-	-	2415.00	-	0.00	-
Electricity charges	575 Unit	Total inculuding fuel c	-	2846.25	-	-	2846.25	-	0.00	-
Kerosine oil	Kerosine oil	1 Ltr	10.29	12.33	16.55	12.00	16.00	33.33	11.00	45.45
Cooking gas	Cooking gas / Excluding Transport	13 Kg	274.67	319.50	14.03	390.00	390.00	0.00	296.00	31.76
Cement	Cement bag	50 kg	81.42	84.58	3.74	97.00	108.00	11.34	81.00	33.33
Plywood	3 mm	1 Piece	110.00	115.03	4.37	126.67	112.50	-11.18	112.00	0.45
Roofing sheet	0.6 mm / 1 feet	1 Piece	26.00	25.65	-1.38	28.00	19.00	-32.14	26.00	-26.92
Furnishing										
Bedroom set	1 Queen zise bed / dressing table / 1 Set		7340.00	6660.42	-10.20	8575.00	10900.00	27.11	6075.00	79.42
Single bed	Single bed / With fancy Plywood	1 Piece	1594.79	1576.04	-1.19	1650.00	1250.00	-24.24	1625.00	-23.08
Mattress	Single / kurlon or Temptation	1 Piece	2147.29	2502.50	14.19	2700.00	3250.00	20.37	2192.50	48.23
Sofa Set	Sofa set / Plywood with sponge cus	1 Piece	5867.50	5662.50	-3.62	4950.00	7950.00	60.61	5875.00	35.32
Linolium	Aadhage Tharafaalu (linolium)	1 Feet	8.67	9.03	4.00	8.50	11.00	29.41	8.83	24.53
Bedsheet	Single Bed sheet / Odinary brand	1 Piece	42.44	42.05	-0.93	40.30	48.00	19.11	41.67	15.20
Refrigerator	Forest free Refrigerator / 50 kg/ Hit	1 Piece	4343.33	4340.58	-0.06	4432.00	3989.00	-10.00	4375.00	-8.82
Stove	2 Sided gas stove / Hitachi brand	1 Piece	558.33	497.92	-12.13	450.00	450.00	0.00	525.00	-14.29
Fan	Electric fan (Ceiling) / Usha Brand /	1 Piece	470.00	457.29	-2.78	470.00	520.00	10.64	471.25	10.34
Sewing machine	Sewing Meching / With 21 Design /	1 Piece	4406.25	5272.73	16.43	5500.00	-	-	4875.00	-
Washing machine	Washing Mechine / Super general t	1 Piece	2892.22	3440.00	15.92	-	-	-	3440.00	-
Water pump	Pedroller Water Pump / 1 inches	1 Piece	2772.54	2894.61	4.22	2950.00	3800.00	28.81	2849.33	33.36
Washing power	Soklin Brand Washing powder Pacl	1 Kg	23.26	22.00	-5.69	20.00	22.00	10.00	23.50	-6.38
Washing power	B 29 Brand Washing powder Pack	1 Kg	19.15	18.84	-1.65	19.17	17.25	-10.00	18.57	-7.12
Insecticides	Insectisides / Mosfly Brand / Small	400 Ml	29.47	33.43	11.84	36.33	38.38	5.62	31.70	21.06
Insecticides	Insectisides / Bop Spary Brand / Sn	400 Ml	28.57	28.54	-0.10	25.00	25.00	0.00	31.25	-20.00
Light tube	Flourescent tube / 2 feet / White Cc	1 Piece	11.41	11.73	2.73	12.40	13.75	10.89	11.83	16.20
Glasses	Plain Glass / Medium Size	1 Piece	5.40	6.13	11.86	6.67	7.00	5.00	5.29	32.43
Health										
Forcevel	Forcevel / 500 mg	1 Tablet	2.94	3.51	16.28	3.50	3.50	0.00	3.33	5.00
Helibo orange	Helibo Orange / 200 ml	1 Bottle	30.81	43.25	28.76	48.00	48.00	0.00	-	-

Description	Specification	Unit	Annualised			Monthly			Month on Month	
			Average 12 monthly Price			Average Price		% Chn	Av Price	% Chn
			Aug 2009-July 2010	Aug 2010-July 2011	% Chn	June 2011	July 2011	Jun 2011 / July 2011	July 2010	July 2011/ July 2010
Diegen	Diegen / 200 ml	1 Bottle	23.00	26.75	14.02	25.00	29.50	18.00	26.00	13.46
Vitamin C	Vitamin C / 500 mg	1 Tablet	0.57	0.82	31.08	1.00	1.00	0.00	0.63	57.89
Doctor's consulting fee-	Doctor consultaton fee / Specialist	Per Patient	117.50	129.58	9.32	150.00	140.00	-6.67	120.00	16.67
Dental service (ordinary	Dental Service / Ordinary Filling	Per Patient	216.67	215.28	-0.65	216.67	200.00	-7.69	216.67	-7.69
HB Test	HB test / Blood Test	Per test	39.75	40.75	2.45	41.00	38.00	-7.32	41.00	-7.32
Ultra sonogram test	Ulta Sound Scan / Hole Abdoman	Per test	480.00	490.00	2.04	520.00	520.00	0.00	480.00	8.33
Chest x-ray	Chest x-ray	Per test	103.89	112.56	7.70	128.33	123.33	-3.90	106.67	15.63
Transport										
Motorcycle	Honda Wave 125 I	1 Piece	44333.33	46225.00	4.09	49900.00	49900.00	0.00	45000.00	10.89
Motorcycle	Honda Wave 125 H	1 Piece	38833.33	41058.33	5.42	45200.00	45200.00	0.00	39500.00	14.43
Bicycle	Mountain	1 Piece	1141.67	1131.25	-0.92	1050.00	1400.00	33.33	1175.00	19.15
Motor cycle tyre	Back Tyre	1 Piece	290.00	374.44	22.55	670.00	670.00	0.00	290.00	131.03
Motor cycle tyre	Front tyre	1 Piece	290.00	356.00	18.54	587.00	587.00	0.00	290.00	102.41
Cleaning of motorcycle	Full cycle	Per vehicle	68.61	70.63	2.85	70.00	77.50	10.71	70.00	10.71
Petrol	Petrol	1 Ltr	10.09	12.89	21.72	16.19	16.19	0.00	10.65	52.02
International airfare	Male'/colombo/male'	Per Person	3866.74	4275.03	9.55	5000.50	5000.50	0.00	3877.07	28.98
Domestic airfare	Male'/Gan/Male'	Per Person / Adult	2531.50	2979.67	15.04	3206.00	3206.00	0.00	2074.00	54.58
Domestic airfare	Male'/Hanimadhoo/Male'	Per Person / Adult	1894.00	2279.67	16.92	2506.00	2506.00	0.00	2074.00	20.83
Domestic airfare	Male'/Kade'dhoo/ Male'	Per Person / Adult	2213.17	2629.67	15.84	2856.00	2856.00	0.00	2074.00	37.70
Domestic airfare	Male'/Kah'dhoo/male'	Per Person / Adult	1884.00	2279.67	17.36	2506.00	2506.00	0.00	2074.00	20.83
Communication										
Postage of letter - Asia	Postage of letter to Asian Countries	1 Piece	14.00	16.00	12.50	16.00	16.00	0.00	16.00	0.00
Postage of letter- Europ	Postage of Letters to European cou	1 Piece	16.00	18.00	11.11	18.00	18.00	0.00	18.00	0.00
Recreation										
CD player	CD Player / Phillips Brand	1 Piece	1229.54	1185.38	-3.73	1224.50	755.00	-38.34	1224.50	-38.34
Aerobics	1 hr class / 3 classes per week	Per Month	282.08	299.58	5.84	320.00	320.00	0.00	285.00	12.28
Newspapers local	Haveeru News PAQer	1 Piece	4.33	5.00	13.33	5.00	5.00	0.00	5.00	0.00
Newspapers local	Afathis News PAQer	1 PAQer	2.61	3.14	16.92	-	-	-	3.00	-
Newspapers local	Miadhu News PAQer	1 Piece	3.27	4.67	29.87	5.00	5.00	0.00	4.00	25.00
Recordable CD	Recordable CD / Blank CD	1 Piece	4.67	4.17	-11.89	3.33	3.33	0.00	4.89	-31.82
Moniter book	Exercise Book / 200 Pages	1 Book	12.94	13.54	4.41	12.50	12.71	1.71	14.25	-10.78
Pen	Red leaf Pen	1 Piece	4.66	4.70	0.67	4.60	5.00	8.70	4.63	8.11
Glaze paper	Glaze PAQer	1 Piece	1.21	1.29	6.11	1.38	1.56	13.13	1.25	24.44
Education										
School fee	Grades 8, 9, 10	Per Month	308.33	384.28	19.76	422.33	422.33	0.00	331.00	27.59
Tution fee	Grade 10, Science scheme	Per Month, for 5 subje	475.00	496.88	4.40	512.50	512.50	0.00	475.00	7.89
Miscellaneous										
Haircut-female	Female Hair Cut	Per Person	116.67	129.17	9.68	141.67	141.67	0.00	116.67	21.43
Haircut-men	Male Hair Cut	Per Person	32.43	34.38	5.66	43.75	43.75	0.00	31.67	38.16
Baby diapers	Huggies / Small Size	1 Packet	117.31	130.52	10.12	137.41	146.67	6.74	124.29	18.01
Sanitary pads	Stay Free	1 Packet	12.55	13.17	4.70	13.80	13.57	-1.66	12.44	9.06
Sanitary pads	Riaa	1 Packet	19.20	16.96	-13.18	14.00	13.20	-5.71	19.40	-31.96
Soap	Lux Soap	100 Gram	4.67	4.65	-0.47	4.72	4.95	4.82	4.77	3.71
Baby soap	Johnson Baby SoAQ	100 Gram	8.01	8.62	7.02	9.57	8.60	-10.15	7.40	16.22
Facial cream	Fair & Lovely / Facial Cream	25 Gram	16.41	16.35	-0.36	15.67	17.67	12.77	16.29	8.48
Baby lotion	Johnson & Johnson Baby Lotion	200 MI, bottle	29.13	30.51	4.52	32.10	33.10	3.12	29.30	12.97
Body lotion	Nivea Lotion	200 MI	36.90	42.37	12.90	42.76	44.80	4.76	38.00	17.89
Body lotion	Enchanteaur Lotion	200 MI	32.23	31.16	-3.42	30.57	30.86	0.93	32.90	-6.21
Baby cologne	Baby Cheramly Colone	175 ml	19.14	23.38	18.15	30.25	30.67	1.38	19.00	61.40
Cologne	Splash	200 MI	18.38	19.83	7.35	20.72	22.43	8.24	19.11	17.36
Cologne	Loviline	175 ml	19.81	21.69	8.68	24.26	26.25	8.20	20.67	27.02
Hair cream	Max	175 ml	24.35	27.52	11.52	30.43	32.00	5.16	26.00	23.08
Hair cream	Elite	175 ml	22.42	27.01	16.97	32.50	32.67	0.51	22.67	44.12
Hair cream	Gatsby	175 ml	24.03	20.47	-17.38	18.75	17.25	-8.00	24.33	-29.11
Shampoo	Emerone	200 MI	15.78	18.11	12.84	21.50	23.00	6.98	16.09	42.94
Shampoo	Head & shoulders	200 MI	30.50	32.31	5.58	34.39	36.50	6.15	30.40	20.07
Toothpaste	Aqua fresh,	50 MI	14.82	14.64	-1.17	15.38	15.20	-1.14	14.30	6.29
Toothpaste	Colgate	50 MI	12.22	11.69	-4.53	11.33	10.40	-8.24	12.43	-16.32

	Consumer Price Index - CPI (June 2004 =100)																		% change in CPI / Inflation Rate																		
	Total	Total Excluding Fish	1. Food and beverages Including Fish	Food and beverages Excluding Fish	1.1 Fish	2. Tobacco	3. Clothing & footwear	4. Housing, water, electricity, gas & other fuels	Actual rentals for housing	5. Furnishing, household equipments & routine maintenance of	6. Health	7. Transport	8. Communication	9. Recreation & culture	10. Education	11. Hotels, cafes & restaurants	12. Miscellaneous goods & services	13. Religious activity	Total	Total Excluding Fish	Food and beverages Including Fish	Food and beverages Excluding Fish	Fish	Tobacco	Clothing & footwear	Housing, water, electricity, gas & other fuels	Actual rentals for housing	Furnishing, household equipments & routine maintenance of	Health	Transport	Communication	Recreation & culture	Education	Hotels, cafes & restaurants	Miscellaneous goods & services	Religious activity	
Weights	48.90	46.48	13.39	10.97	2.42	0.93	2.45	12.30	7.17	2.85	2.76	2.92	3.84	2.10	1.51	0.77	2.96	0.11	48.90	46.48	13.39	10.97	2.42	0.93	2.45	12.30	7.17	2.85	2.76	2.92	3.84	2.10	1.51	0.77	2.96	0.11	
2009	130.21	130.13	151.57	155.95	131.68	111.35	109.30	131.18	143.81	129.43	151.16	153.56	61.32	88.34	150.19	141.33	118.07	100.00	4.53	5.48	0.52	2.93	-10.70	-1.80	3.21	7.82	14.29	10.94	2.25	0.98	-0.75	5.01	35.09	2.57	7.10	0.00	
2010	138.21	138.02	162.90	167.54	141.88	110.98	112.54	141.13	153.04	137.17	158.21	158.66	61.46	93.41	164.38	145.89	123.88	100.00	6.15	6.07	7.48	7.43	7.74	-0.33	2.96	7.59	6.42	5.98	4.66	3.32	0.23	5.74	9.44	3.23	4.93	0.00	
August 2009 to July2010	134.53	134.73	155.64	161.12	130.80	110.63	112.71	137.55	149.99	133.63	154.94	156.33	61.40	92.62	160.99	144.31	122.30	100.00	8.43	6.68	15.85	10.98	43.08	7.41	3.55	4.88	4.91	3.31	6.76	7.09	0.34	0.03	13.55	5.24	2.92	0.00	
August 2010 to July 2011	145.87	143.73	180.31	178.81	187.14	118.83	116.71	144.27	157.36	138.05	165.41	167.41	61.61	92.66	182.80	151.88	125.88	100.00																			
July 2011 /July2010																			13.09	7.44	25.07	8.33	106.40	26.78	12.69	4.29	4.25	1.94	8.62	14.82	0.85	-6.48	16.89	13.20	7.19	0.00	
2010 July	141.04	139.92	172.30	174.41	162.73	109.75	111.77	141.32	152.96	137.96	159.22	159.91	61.46	93.91	166.41	146.73	123.85	100.00	2.19	1.77	6.74	6.17	9.60	-0.07	-0.29	0.18	0.16	-0.46	0.73	0.00	0.00	0.62	0.00	0.00	-0.72	0.00	
Aug	141.94	140.28	174.68	174.87	173.84	110.51	111.77	142.14	154.17	138.09	159.22	159.86	61.46	93.88	166.41	146.73	124.10	100.00	0.63	0.26	1.38	0.26	6.83	0.70	0.00	0.58	0.79	0.09	0.00	-0.03	0.00	-0.04	0.00	0.00	0.20	0.00	
Sep	140.11	138.98	167.70	169.00	161.81	110.36	111.77	142.49	154.77	138.11	159.22	159.86	61.46	93.88	166.41	146.73	124.10	100.00	-1.29	-0.92	-4.00	-3.35	-6.92	-0.14	0.00	0.25	0.39	0.01	0.00	0.00	0.00	0.00	0.00	0.00	0.00	0.00	
Oct	139.79	139.48	166.01	170.44	145.93	111.27	112.06	142.87	155.43	138.18	159.22	159.86	61.46	93.88	166.41	146.73	124.30	100.00	-0.23	0.35	-1.01	0.85	-9.81	0.83	0.26	0.27	0.43	0.05	0.00	0.00	0.00	0.00	0.00	0.00	0.16	0.00	
Nov	140.46	140.75	167.72	174.99	134.73	111.27	112.22	143.46	156.43	138.21	159.24	159.86	61.46	93.88	166.41	146.73	124.93	100.00	0.47	0.92	1.03	2.67	-7.67	0.00	0.14	0.41	0.64	0.02	0.01	0.00	0.00	0.00	0.00	0.00	0.51	0.00	
Dec	142.34	142.78	174.75	183.74	133.95	113.39	112.26	143.77	157.04	136.80	159.24	159.86	61.46	93.88	166.41	145.72	123.90	100.00	1.34	1.44	4.19	5.00	-0.58	1.90	0.03	0.22	0.39	-1.02	0.00	0.00	0.00	0.00	0.00	0.00	-0.69	-0.83	0.00
2011 Jan	143.22	143.13	172.93	179.13	144.84	114.97	114.51	143.89	157.26	137.18	162.88	162.00	61.46	94.36	194.52	145.72	123.12	100.00	0.62	0.25	-1.04	-2.51	8.12	1.39	2.00	0.09	0.14	0.28	2.28	1.34	0.00	0.51	16.89	0.00	-0.63	0.00	
Feb	141.98	141.95	167.76	173.33	142.52	115.87	114.73	144.44	158.20	137.99	162.88	162.07	61.46	94.49	194.52	145.72	122.34	100.00	-0.87	-0.83	-2.99	-3.24	-1.60	0.78	0.20	0.38	0.60	0.59	0.00	0.04	0.00	0.14	0.00	0.00	-0.63	0.00	
Mar	142.88	142.24	169.94	173.20	155.16	115.06	116.35	144.58	158.47	138.75	165.66	162.29	61.46	94.03	194.52	145.72	122.42	100.00	0.63	0.20	1.30	-0.07	8.86	-0.70	1.41	0.10	0.17	0.54	1.71	0.14	0.00	-0.49	0.00	0.00	0.07	0.00	
Apr	149.19	145.48	188.04	180.89	220.43	119.55	120.58	144.78	158.74	135.96	167.67	173.09	61.46	90.46	194.52	158.03	128.60	100.00	4.42	2.28	10.65	4.44	42.07	3.90	3.64	0.14	0.17	-2.01	1.21	6.65	0.00	-3.79	0.00	8.45	5.05	0.00	
May	154.13	149.71	198.54	189.59	239.10	125.87	123.69	146.78	158.95	136.43	178.16	183.01	62.07	90.45	194.52	162.51	127.85	100.00	3.31	2.90	5.59	4.81	8.47	5.29	2.58	1.38	0.13	0.35	6.25	5.74	0.98	-0.02	0.00	2.83	-0.58	0.00	
June**	154.95	149.61	200.21	187.57	257.53	138.69	124.62	144.64	159.34	140.21	178.58	183.61	62.07	90.85	194.52	166.11	132.07	100.00	0.53	-0.06	0.84	-1.07	7.71	10.19	0.75	-1.46	0.25	2.77	0.24	0.32	0.00	0.45	0.00	2.22	3.30	0.00	
July	159.51	150.33	215.49	188.94	335.88	139.14	125.96	147.38	159.46	140.64	172.95	183.61	61.99	87.83	194.52	166.11	132.75	100.00	2.94	0.48	7.63	0.73	30.42	0.32	1.08	1.89	0.08	0.31	-3.15	0.00	-0.13	-3.33	0.00	0.00	0.52	0.00	