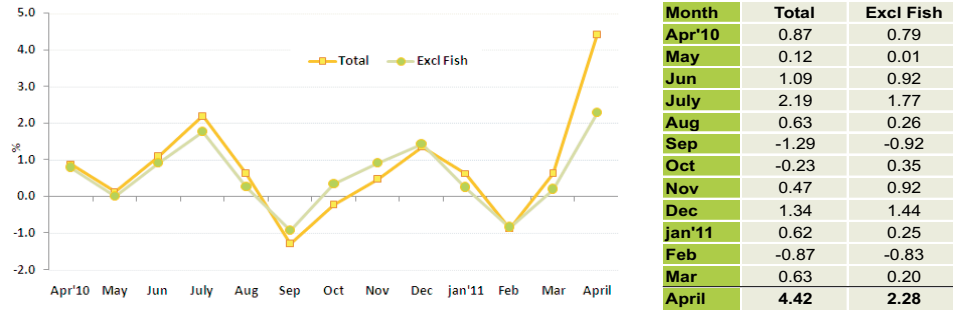


1. Inflation Rate of Male' (Monthly): April 2011 compared to March 2011

To measure month to month inflation, this month's index is compared with the previous month inflation (for e.g : April '11 and March'11). The monthly inflation for April 2011 is 4.42% and 2.28% is the total excluding fish.

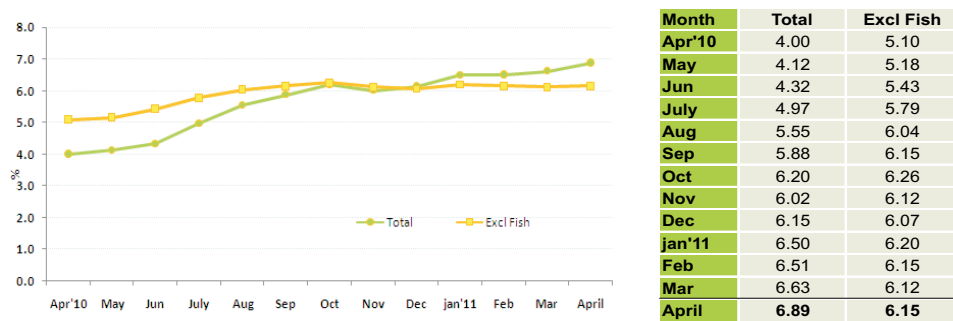
Figure 7. Monthly Inflation Rate of Male', April 2010 - April 2011 (compared to the previous month)



2. Inflation Rate of Male' (Annualized): May '10 to April '11 / May '09 to April '10

The annualized inflation rate for any month compares the average for the 12 month indices with that of the preceding 12 months (Eg: May '10 to April '11 / May '09 to April '10). This index shows an annual inflation of 6.89%, and the annualized total excluding fish is 6.15%.

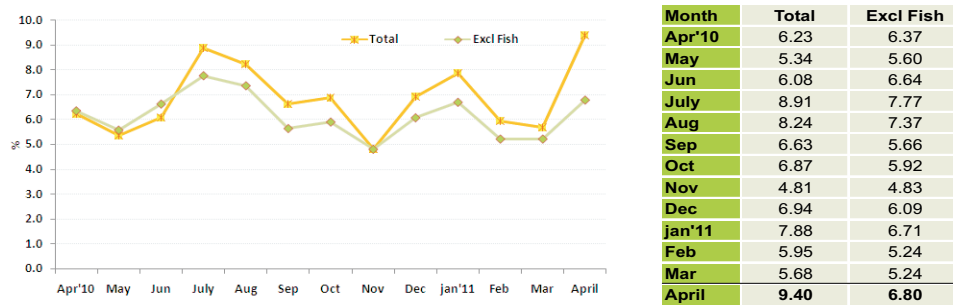
Figure 8. Inflation Rate of Male', April 2010 - April 2011 (compared to the past 12 month period)



3. Inflation Rate of Male' (month on month): April '11 / April '10

To measure the month on month change at one point in time, the index of the month is compared with that of the same month in the preceding year (Eg: April '11 / April '10). The month on month index for April shows an inflation of 9.40% and the inflation excluding fish is 6.80%.

Figure 9. Inflation Rate of Male' April 2010 - April 2011 (compared to the same month of the previous year)



CONSUMER PRICE INDEX - MALE'

Department of National Planning
Ministry of Finance and Treasury

April 2011

Consumer Price Index-Male', April 2011

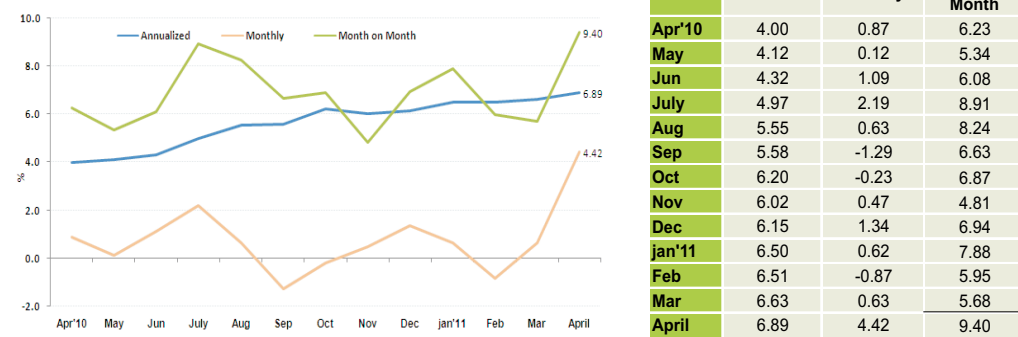
Inflation Rate of Male'

The Consumer Price Index (CPI) for Male' rose at an annualized rate of 6.89 percent in April 2011. The inflation was driven mainly by food excluding fish and housing, water, electricity, gas and other fuels and fish categories. Additionally education and health categories also contributed to this inflation.

Monthly CPI of April 2011 increased by 4.42 percent compared to March 2011. The inflation was mainly driven from fish and food excluding fish category. Transport and miscellaneous goods and services categories also contributed largely to this inflation.

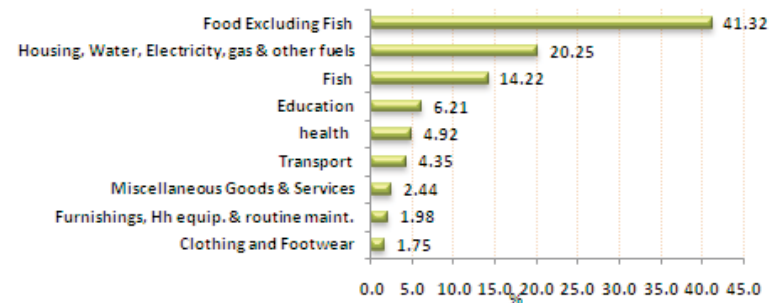
When April 2011 is compared to April 2010, the consumer price index increased by 9.40 percent. Fish category showed the highest inflation followed by education and food excluding fish categories.

Figure 1: Inflation rates of Male' April 2011



Sources of changes in CPI - Annualized

Figure 2: Sources of changes in April CPI - Annualized



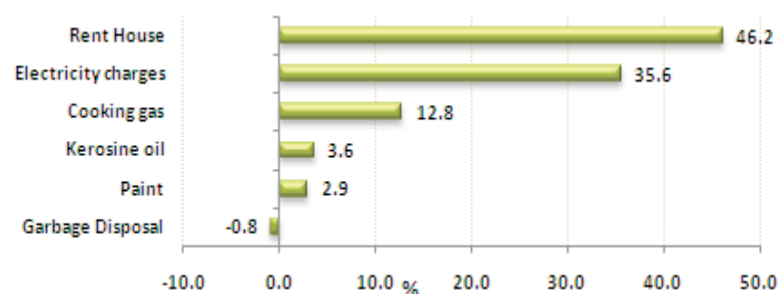
Main contributions to the change in the CPI - Annualized basis

The largest upward contribution to the change in the annualized CPI came from food excluding fish category which contributed 41%. Coconut and garlic prices went up by 41% and 34% respectively. Both dhal and githiyo mirus prices went up by 27%. Other items which registered a price change above 20% were green chilli, water melon, lime, cabbage, onion and ginger.

The second largest upward contribution to the change in the annualized CPI came from housing, water, electricity, gas & other fuels category with 20%. Rent prices contributed highest to inflation of this category with 46%. Rent prices increased by 5%. Electricity prices contributed 36% to the inflation of housing category where the prices increased by 13%. Kerosine oil and cooking gas prices went up by 15% and 10% respectively.

Fish category contributed 14% to the overall annualized inflation. Both little tuna and skipjack tuna prices increased by 25%. Additionally reef fish and smoked fish prices also went up by 22% and 17% respectively.

Figure 3: Products contributing to the inflation: Household, water, electricity, gas & other fuels category - Annualized



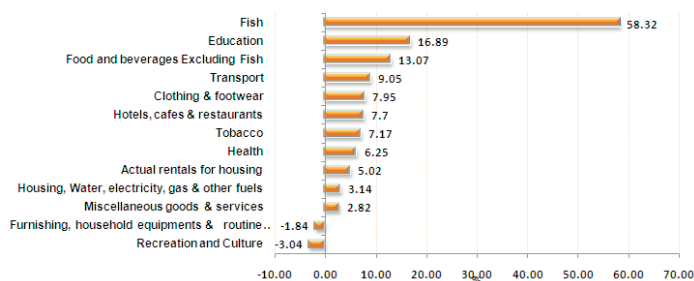
Change in the CPI - Month on Month

When April 2011 was compared to April 2010 most of the categories recorded an inflation. Fish category showed the highest inflation with 58.3% followed by education category which registered 16.9%. Skipjack tuna prices increased by 89%, reef fish prices went up by 41% and canned fish prices rose by 29% when the two points of time were compared. Additionally smoked fish and little tuna prices also went up by 26% and 24% respectively. School fee went up by 28% during the same period.

Food and beverages excluding fish category showed an inflation of 13.1%. Items which contributed most to this inflation were garlic, coconut, orange and aracanut which increased by 120%, 86%, 63% and 56% respectively. Other food items which showed a price difference above 30% were candy, watermelon, chicken sausage, cooking oil, margarine, tea bag, green chilli and cream crackers. However githiyo mirus (local chilli) and banana prices decreased by 24% and 7% respectively.

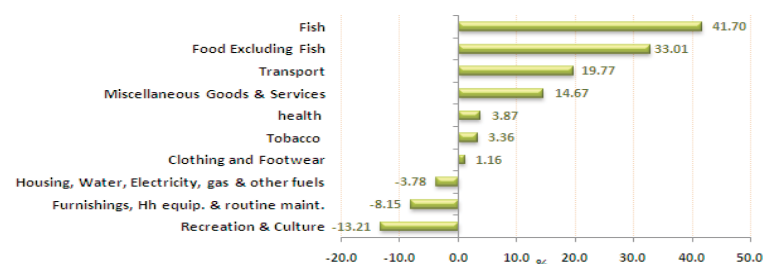
As for transport category petrol prices increased by 41% and domestic airfares increased on an average of 24% during the period. Also international airfares increased by 18% when the two points of time were compared.

Figure 4: Inflation Rates by Major sectors - Month on Month basis



Main contributions to the change in the CPI - Monthly basis

Figure 5: Sources of changes in April 2011 CPI - monthly



Fish and food excluding fish categories pulled up the monthly inflation by 42% and 33% respectively. Additionally transport and miscellaneous goods and services categories also pulled up the overall monthly inflation by 20% and 15% respectively. Recreation and culture pulled down the inflation by 13%

As for transport category, international airfares went up by 18%. Domestic airfares increased on an average of 11%. Additionally petrol prices went up by 11% in April 2011 when compared to March 2011.

The items which contributed most to the inflation of miscellaneous goods and services category were baby cologne, shampoo, body lotion, hair cream, female haircut and baby diapers.

The item which contributed to the deflation of recreation and culture category was monitor book. However aerobic prices increased by 12% in April 2011 when compared to March 2011.

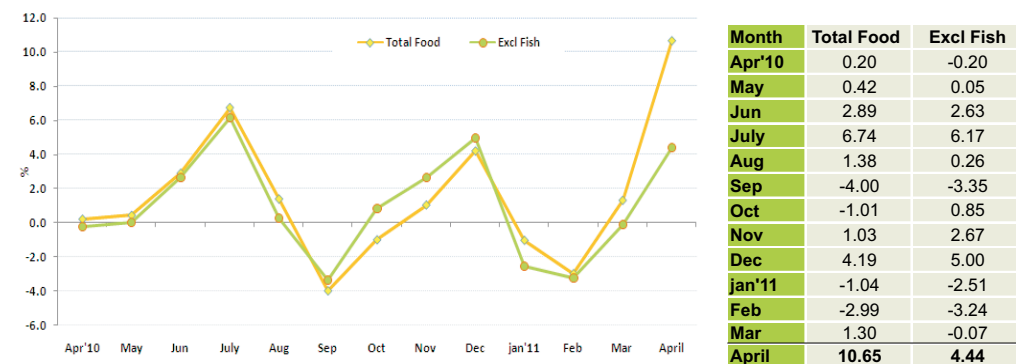
Monthly inflation rate of food and beverages category

The monthly inflation rate for the food category is 10.7%. Food excluding fish category showed an inflation of 4.44%.

The items which contributed most to the 42% inflation of the fish category were skipjack tuna, reef fish and little tuna, where the prices went up by 68%, 17% and 15% respectively. Additionally smoked fish and canned fish prices also increase by 12% and 5% during April 2011.

As for food excluding fish category, garlic prices went up by 96% in April when compared to March. Candy, tea bag packets, aracanut and cooking oil prices went up by 58%, 35%, 31% and 23% respectively. Other items which showed a price increase above 15% were cream crackers, mixed fresh vegetables, chilli powder, chocolate wafer, bread, milk powder and curry powder. However items such as watermelon and onion registered a price fall of 20% and 10% respectively. Additionally chicken sausage green chilli, cabbage, tea leaves, potato, carrot, banana and ginger also showed a decrease in price in April 2011 when compared to March 2011.

Figure 6: Inflation Rates of Food and Beverages - Monthly basis



Annex 1: Average Prices of Items which showed a significant change, CPI Male', April 2011

| Description | Specification | Unit | Annualised | | | Monthly | | % Chn Mar 2011 / April 2011 | Month on Month | |
|------------------------|---------------------------------------|--------------------|--------------------------|-------------------------|--------|---------------|------------|-----------------------------------|----------------|---------------------------|
| | | | Average 12 monthly Price | | | Average Price | | | Av Price | % Chn |
| | | | May 2009- April 2010 | May 2010- April 2011 | % Chn | Mar 2011 | April 2011 | | April 2010 | April 2011/ April 2010 |
| Food | | | | | | | | | | |
| Garlic | Garlic | 100 Gram | 4.39 | 6.63 | 33.77 | 5.23 | 10.25 | 96.09 | 4.67 | 119.64 |
| Coconut | Medium size / Coconut | 1 Piece | 3.78 | 6.37 | 40.58 | 7.23 | 7.48 | 3.46 | 4.02 | 85.98 |
| Orange | Fresh Orange | 1 Piece | 3.17 | 3.70 | 14.41 | 4.15 | 4.56 | 9.77 | 2.80 | 62.70 |
| Aracanut | Raw Aracanut / Uncut / Loose | 1 kg | 43.03 | 48.16 | 10.66 | 53.25 | 70.00 | 31.46 | 45.00 | 55.56 |
| Candy | Solano | 1 Piece / 25 Gram | 0.34 | 0.43 | 19.19 | 0.40 | 0.64 | 58.04 | 0.43 | 49.05 |
| Watermelon | Water melon (fresh Localy produce | 1 kg | 11.55 | 15.56 | 25.76 | 20.75 | 16.50 | -20.48 | 11.14 | 48.08 |
| Chicken sausage | Chicken Sausage / Packed | 340 Gram | 14.80 | 16.49 | 10.20 | 22.83 | 20.71 | -9.28 | 14.11 | 46.79 |
| Cooking oil | Bemoli Oil | 2 Ltr | 44.93 | 46.25 | 2.86 | 49.44 | 62.14 | 25.68 | 45.29 | 37.22 |
| Majerine | Daisy brand tub / Small | 250 Gram | 17.57 | 19.98 | 12.09 | 23.18 | 23.30 | 0.51 | 17.00 | 37.06 |
| Tea leaves-tea bag | Melesna / 100 tea bag | 200 Gram | 23.57 | 24.87 | 5.24 | 24.40 | 33.00 | 35.25 | 24.20 | 36.36 |
| Meals (lunch packet) | 4 roshi / 1 chickencurry / 1 black te | Per person | 20.00 | 20.58 | 2.83 | 20.00 | 27.00 | 35.00 | 20.00 | 35.00 |
| Green chilli | Green Chilli / Imported | 100 Gram | 7.17 | 9.66 | 25.76 | 10.25 | 9.50 | -7.32 | 7.13 | 33.33 |
| Biscuits | Cream Cracker, Khong Guan | 200 gram | 8.24 | 9.03 | 8.67 | 9.05 | 11.00 | 21.61 | 8.30 | 32.53 |
| Milo | Nestle Milo Powder / Canned | 400 Gram | 47.82 | 53.41 | 10.47 | 61.27 | 62.78 | 2.46 | 49.55 | 26.71 |
| Tomato | Fresh Tomato | 1Kg | 28.89 | 30.64 | 5.71 | 29.78 | 29.89 | 0.37 | 24.00 | 24.54 |
| Potato | Imported Potato | 1 kg | 12.03 | 12.63 | 4.76 | 12.05 | 11.36 | -5.66 | 9.25 | 22.85 |
| Mixed fresh vegetables | Mixed Vegetables | 1 kg | 40.09 | 41.30 | 2.94 | 42.00 | 50.00 | 19.05 | 40.83 | 22.45 |
| Baby food - fruit | Purity / Fruit / Secound food | 200ml, Bottle | 17.28 | 20.57 | 15.99 | 22.33 | 24.00 | 7.46 | 19.63 | 22.29 |
| Chicken drumsticks | Chicken drumstick | 1 kg | 44.41 | 51.48 | 13.72 | 53.11 | 53.56 | 0.84 | 44.14 | 21.32 |
| Sauce | Chillie & Garilic Sauce / life Brand | 320 Gram / Bottled | 11.00 | 12.03 | 8.56 | 13.00 | 13.50 | 3.85 | 11.20 | 20.54 |
| Canned mixed fruits | Canned Mixed Fruit / Small | 398 Gram | 23.31 | 25.44 | 8.37 | 28.00 | 27.33 | -2.38 | 22.75 | 20.15 |
| Bread | Small Bread | 1 Piece | 9.96 | 10.23 | 2.66 | 10.18 | 11.89 | 16.77 | 10.00 | 18.89 |
| Ice cream | Chocolate Ice cream / Tub | 1 Ltr | 42.75 | 45.80 | 6.67 | 46.78 | 51.67 | 10.45 | 43.50 | 18.77 |
| Sauce | Chillie Sauce / life Brand | 335 Gram / Bottled | 10.51 | 11.06 | 4.96 | 11.45 | 12.50 | 9.17 | 10.55 | 18.48 |
| Milk powder | Anchor Milk | 1800 Gram / Tin | 196.84 | 202.78 | 2.93 | 197.70 | 229.71 | 16.19 | 196.63 | 16.83 |
| lemon | Imported lemon | 1 Piece | 1.45 | 1.85 | 21.80 | 1.78 | 1.94 | 8.98 | 1.67 | 16.25 |
| Onion | Imported Onion | 1 kg | 15.48 | 19.60 | 21.01 | 12.67 | 11.41 | -9.93 | 9.83 | 16.02 |
| Egg | Chicken egg / Imported | 1 Piece | 1.39 | 1.51 | 7.84 | 1.43 | 1.50 | 4.76 | 1.30 | 15.79 |
| Curry powder | Fish curry powder / Packed locally | 50 Gram | 4.95 | 5.02 | 1.51 | 5.20 | 5.75 | 10.58 | 5.00 | 15.00 |
| Coke | Dubai coke / Canned | 300 Ml | 6.94 | 7.00 | 0.86 | 7.09 | 7.83 | 10.47 | 6.82 | 14.89 |
| Coke | Coka Cola / Large Bottle | 1500 Ml | 22.62 | 23.83 | 5.08 | 24.56 | 26.13 | 6.39 | 22.89 | 14.14 |
| Bread | Large | 1 Piece | 19.92 | 20.21 | 1.41 | 20.00 | 22.80 | 14.00 | 20.00 | 14.00 |
| Jam | Tova Brand / Bottle | 450 Gram | 18.17 | 22.14 | 17.96 | 22.70 | 23.00 | 1.32 | 20.18 | 13.96 |
| Canned green peas | Green peas / Processed peas / Car | 440 Gram | 8.32 | 8.31 | -0.11 | 8.32 | 9.11 | 9.53 | 8.00 | 13.89 |
| Chilli powder | Chillie Powder / Packed Locally | 50 Gram | 4.96 | 4.99 | 0.72 | 5.00 | 5.83 | 16.67 | 5.13 | 13.82 |
| Chilli powder | Dried Chilli (Hikimirus) / Loose | 1 kg | 49.43 | 52.14 | 5.21 | 50.83 | 60.00 | 18.03 | 52.83 | 13.56 |
| Curry powder | Chicken curry powder / Packed loc | 50 Gram | 4.97 | 5.01 | 0.64 | 5.00 | 5.75 | 15.00 | 5.09 | 12.95 |
| Tea leaves-tea bag | Today's Taste / 100 tea bag | 200 Gram | 22.65 | 24.73 | 8.41 | 25.20 | 26.22 | 4.06 | 23.30 | 12.54 |
| Baby food - cereal | Nestum / Wheat & Honey | 250 Gram / Tin | 32.34 | 36.90 | 12.36 | 38.09 | 40.10 | 5.27 | 35.67 | 12.43 |
| Canned baked beans | Baked Beans / Canned | 400 Gram | 10.20 | 10.89 | 6.30 | 10.78 | 11.83 | 9.79 | 10.56 | 12.11 |
| Dhal | Yellow Coloured Dhal | 1 kg | 31.71 | 43.68 | 27.41 | 45.09 | 44.60 | -1.09 | 39.91 | 11.75 |
| Frozen chicken | Frozen chicken / Whole chicken / P | 1 kg | 36.50 | 38.03 | 4.01 | 38.90 | 41.00 | 5.40 | 36.80 | 11.41 |
| Milk powder | Coast | 1800 Gram, tin | 196.43 | 199.34 | 1.46 | 202.00 | 221.38 | 9.59 | 199.30 | 11.08 |
| Condensed milk | Cow Bell | 397 Gram / Tin | 10.53 | 10.80 | 2.52 | 10.95 | 11.43 | 4.37 | 10.35 | 10.42 |
| Tea leaves-tea bag | Akbar / 100 tea bag | 200 Gram | 22.21 | 24.77 | 10.34 | 25.50 | 26.20 | 2.75 | 23.75 | 10.32 |
| Coffee | Nescafe, Cafe' soluble coffee / Can | 50 Gram | 29.24 | 30.92 | 5.44 | 32.40 | 33.33 | 2.88 | 30.45 | 9.45 |
| Cabbage | Fresh Cabbage | 1 kg | 22.19 | 28.28 | 21.53 | 23.70 | 22.20 | -6.33 | 20.30 | 9.36 |
| Restaurant meals | Fish & Chips | 1 plate | 45.75 | 46.74 | 2.12 | 47.67 | 50.00 | 4.90 | 45.75 | 9.29 |
| Frozen beef | Frozen Beef | 1 kg | 46.27 | 48.53 | 4.67 | 48.13 | 50.63 | 5.19 | 47.06 | 7.59 |
| Juice-Sunquick | Sunquick / Orange Juice / Bottled | 840 Ml | 55.44 | 55.95 | 0.91 | 55.00 | 60.11 | 9.29 | 56.10 | 7.15 |
| Butter bun | butter buns / Packed | 1 Piece | 3.57 | 3.51 | -1.73 | 3.44 | 3.75 | 9.09 | 3.50 | 7.14 |
| Sauce | Tomato Sauce / life Brand | 320 Gram / Bottled | 9.76 | 10.11 | 3.44 | 10.44 | 10.71 | 2.58 | 10.00 | 7.14 |
| Carrot | Fresh Carrot | 1 kg | 24.56 | 25.97 | 5.43 | 26.40 | 25.56 | -3.20 | 23.90 | 6.93 |
| Apollo | Milk choco / Wafer cream | 1 Piece | 1.34 | 1.37 | 2.20 | 1.28 | 1.50 | 17.39 | 1.42 | 5.88 |
| Beans | Fresh Beans | 1 kg | 50.23 | 49.98 | -0.51 | 48.60 | 51.80 | 6.58 | 49.00 | 5.71 |
| Cucumber | Fresh Cucumber | 1 kg | 25.02 | 30.25 | 17.28 | 24.10 | 25.40 | 5.39 | 25.00 | 1.60 |
| Juice-FosterClark | FosterClark / Powdered Juice / Bot | 750 Gram | 48.94 | 54.62 | 10.40 | 54.18 | 54.33 | 0.28 | 53.55 | 1.47 |
| Ginger | Ginger | 100 Gram | 4.60 | 5.78 | 20.50 | 5.05 | 4.91 | -2.70 | 4.86 | 0.93 |
| Corn flake | Celloggs / Wheat and Honey | 300 Gram | 36.02 | 43.19 | 16.60 | 41.75 | 41.00 | -1.80 | 40.67 | 0.82 |
| Saltish short-eats | Handulu gulha | 1 Piece | 1.36 | 1.34 | -1.55 | 1.33 | 1.50 | 12.50 | 1.50 | 0.00 |
| Sweet short-eats | Foni folhi | 1 Piece | 1.68 | 2.00 | 15.97 | 2.00 | 2.00 | 0.00 | 2.00 | 0.00 |
| Apple | Apple | 1 Piece | 4.45 | 5.03 | 11.45 | 5.32 | 5.20 | -2.22 | 5.45 | -4.67 |
| Cooking oil | Sun Flower Oil | 2 Ltr | 85.29 | 72.52 | -17.62 | 66.38 | 80.67 | 21.53 | 85.00 | -5.10 |
| Banana | Bonthiraia | 1 Piece | 1.94 | 2.17 | 10.66 | 1.99 | 1.94 | -2.79 | 2.08 | -6.71 |
| Tea leaves-loose | Cylon Tea Leaves (loose) | 1 kg | 42.83 | 42.50 | -0.77 | 42.50 | 40.00 | -5.88 | 45.00 | -11.11 |
| Gotheyo Mirus | Dhivehi mirus | 1 Piece | 2.48 | 3.39 | 26.73 | 2.36 | 2.33 | -1.01 | 3.06 | -23.81 |
| Fish | | | | | | | | | | |
| Canned fish in oil | Felivaru canned fish / Chunk in Oil | 185 Gram | 13.44 | 15.35 | 12.46 | 16.35 | 16.85 | 3.06 | 13.41 | 25.66 |
| Canned fish in brine | Felivaru Canned Fish / Chunk in Br | 185 Gram | 11.85 | 13.72 | 13.62 | 14.72 | 15.78 | 7.17 | 12.00 | 31.48 |
| Dried fish chips | Pre packed Dried fish chips | 100 Gram | 11.07 | 10.44 | -6.01 | 10.40 | 10.67 | 2.56 | 12.00 | -11.11 |
| Smoked fish | Smoked Fish (Valhoamas) / Loose | 1 kg | 50.38 | 60.53 | 16.76 | 58.96 | 66.36 | 12.55 | 52.76 | 25.78 |
| Skipjack tuna | Godha / Kalhubilamas | 1 kg | 21.78 | 28.96 | 24.78 | 28.01 | 47.04 | 67.94 | 24.87 | 89.14 |
| Other tuna | Other Tuna / Latti | 1 kg | 15.91 | 21.24 | 25.09 | 21.13 | 24.30 | 15.00 | 19.56 | 24.23 |
| Reef fish | Reef Fish / Maaniya mas | 1 kg | 14.27 | 18.35 | 22.25 | 19.79 | 23.25 | 17.48 | 16.47 | 41.17 |

| Description | Specification | Unit | Annualised | | | Monthly | | Month on Month | | |
|--------------------------------------|---|-------------|--------------------------|-------------------------|---------------|----------|---------|----------------|---------|------------|
| | | | Average 12 monthly Price | | Average Price | | % Chn | Av Price | % Chn | |
| | | | May 2009- April 2010 | May 2010- April 2011 | % Chn | Mar 2011 | | | | April 2011 |
| Clothin and Footwear | | | | | | | | | | |
| School uniform | School Uniform / Boys / Medium size | 1 Piece | 46.67 | 51.71 | 9.75 | 50.00 | 102.50 | 105.00 | 46.00 | 122.83 |
| Mens trousers | Men's Trousers / Long | 1 Piece | 174.17 | 178.89 | 2.64 | 186.67 | 203.33 | 8.93 | 171.67 | 18.45 |
| Men's shoes | Office Shoes | 1 Pair | 233.50 | 260.28 | 10.29 | 261.67 | 245.00 | -6.37 | 261.67 | -6.37 |
| Mens jeans | Mend's Jeans / Most Sold Material | 1 Piece | 213.61 | 217.36 | 1.73 | 215.00 | 243.33 | 13.18 | 215.00 | 13.18 |
| Housing | | | | | | | | | | |
| Electricity charges | Below 200 units(0 - 100) | Per Unit | 1.95 | 2.25 | 13.33 | 2.25 | 2.25 | 0.00 | 2.25 | 0.00 |
| Kerosine oil | Kerosine oil | 1 Ltr | 10.00 | 11.79 | 15.19 | 12.00 | 12.00 | 0.00 | 12.00 | 0.00 |
| Cooking gas | Cooking gas / Excluding Transport | 13 Kg | 266.67 | 296.00 | 9.91 | 296.00 | 296.00 | 0.00 | 296.00 | 0.00 |
| Roofing sheet | 0.6 mm / 1 feet | 1 Piece | 25.83 | 25.58 | -0.98 | 24.25 | 28.00 | 15.46 | 26.00 | 7.69 |
| House rent | house rent | ~ | 148.05 | 155.65 | 4.88 | 158.47 | 158.74 | 0.17 | 151.15 | 5.02 |
| Furnishing | | | | | | | | | | |
| Mattress | Single / kurlon or Temptation | 1 Piece | 1989.58 | 2297.92 | 13.42 | 2700.00 | 2700.00 | 0.00 | 2192.50 | 23.15 |
| Sewing machine | Sewing Meching / With 21 Design / 1 Piece | 1 Piece | 4250.00 | 5135.42 | 17.24 | 5500.00 | 5500.00 | 0.00 | 4250.00 | 29.41 |
| Insecticides | Insecticides / Mosfly Brand / Small | 400 Ml | 28.51 | 31.89 | 10.59 | 34.70 | 30.60 | -11.82 | 31.20 | -1.92 |
| Insecticides | Insecticides / Bop Spary Brand / Sr | 400 Ml | 27.77 | 30.48 | 8.89 | 30.00 | 25.00 | -16.67 | 29.00 | -13.79 |
| Sofa Set | Sofa set / Plywood with sponge cus | 1 Piece | 5712.78 | 5791.67 | 1.36 | 4950.00 | 4950.00 | 0.00 | 6300.00 | -21.43 |
| Glasses | Plain Glass / Medium Size | 1 Piece | 5.35 | 5.65 | 5.20 | 5.71 | 6.50 | 13.75 | 5.43 | 19.74 |
| Bedroom set | 1 Queen zise bed / dressing table / 1 Set | 1 Set | 7244.58 | 6297.92 | -15.03 | 6100.00 | 6100.00 | 0.00 | 7600.00 | -19.74 |
| Health | | | | | | | | | | |
| Vitamin C | Vitamin C / 500 mg | 1 Tablet | 0.54 | 0.72 | 24.56 | 0.85 | 1.00 | 17.65 | 0.63 | 57.89 |
| Forcevel | Forcevel / 500 mg | 1 Tablet | 2.88 | 3.34 | 13.75 | 3.50 | 3.75 | 7.14 | 2.93 | 27.84 |
| Doctor's consulting fee-gener | consultation fee / General Doctor | Per Patient | 72.40 | 81.25 | 10.90 | 81.25 | 81.25 | 0.00 | 81.25 | 0.00 |
| Helibo orange | Helibo Orange / 200 ml | 1 Bottle | 31.29 | 36.70 | 14.75 | 40.00 | 48.00 | 20.00 | - | - |
| Diegen | Diegen / 200 ml | 1 Bottle | 22.86 | 25.61 | 10.74 | 26.50 | 29.50 | 11.32 | 21.67 | 36.15 |
| Transport | | | | | | | | | | |
| Petrol | Petrol | 1 Ltr | 9.66 | 11.23 | 14.02 | 13.53 | 15.02 | 11.01 | 10.65 | 41.03 |
| International airfare | Male'/colombo/male' | Per Person | 3863.03 | 3935.62 | 1.84 | 3877.07 | 4579.68 | 18.12 | 3877.07 | 18.12 |
| Domestic airfare | Male'/Gan/Male' | Per Person | 2476.42 | 2841.08 | 12.84 | 2928.00 | 3206.00 | 9.49 | 2685.00 | 19.40 |
| Domestic airfare | Male'/Hanimadhoo/Male' | Per Person | 1768.08 | 2141.08 | 17.42 | 2228.00 | 2506.00 | 12.48 | 1985.00 | 26.25 |
| Domestic airfare | Male'/Kade'dhoo/ Male' | Per Person | 2128.92 | 2491.08 | 14.54 | 2578.00 | 2856.00 | 10.78 | 2335.00 | 22.31 |
| Domestic airfare | Male'/Kah'dhoo/male' | Per Person | 1758.08 | 2141.08 | 17.89 | 2228.00 | 2506.00 | 12.48 | 1985.00 | 26.25 |
| Communication | | | | | | | | | | |
| Postage of letter - Asia | Postage of letter to Asian Countries | 1 Piece | 12.50 | 16.00 | 21.88 | 16.00 | 16.00 | 0.00 | 16.00 | 0.00 |
| Postage of letter- Europe | Postage of Letters to European col | 1 Piece | 14.50 | 18.00 | 19.44 | 18.00 | 18.00 | 0.00 | 18.00 | 0.00 |
| Internet charges | Dail up on 126 (56kbps) | per minute | 0.65 | 0.73 | 10.50 | 0.75 | 0.75 | 0.00 | 0.65 | 15.64 |
| Recreation | | | | | | | | | | |
| Aerobics | 1 hr class / 3 classes per week | Per Month | 269.17 | 287.92 | 6.51 | 285.00 | 320.00 | 12.28 | 285.00 | 12.28 |
| Newspapers local | Haveeru News PAQer | 1 Piece | 4.05 | 5.00 | 19.00 | 5.00 | 5.00 | 0.00 | 5.00 | 0.00 |
| Moniter book | Exercise Book / 200 Pages | 1 Book | 12.39 | 13.97 | 11.28 | 13.83 | 12.80 | -7.47 | 13.57 | -5.68 |
| Education | | | | | | | | | | |
| School fee | Grades 8, 9, 10 | Per Month | 299.83 | 361.44 | 17.05 | 422.33 | 422.33 | 0.00 | 331.00 | 27.59 |
| Hotels, cafes and Restaurants | | | | | | | | | | |
| Meals (lunch packet) | 4 roshi / 1fish curry / 1 black tea / 1 | Per person | 14.67 | 17.00 | 13.73 | 17.00 | 17.00 | 0.00 | 16.00 | 6.25 |
| Restaurant meals | Nasi Goreng | 1 plate | 49.72 | 50.11 | 0.78 | 49.67 | 55.00 | 10.74 | 49.67 | 10.74 |
| Pizza | Tuna Mushroom | whole pizza | 63.33 | 64.03 | 1.08 | 63.33 | 71.67 | 13.16 | 63.33 | 13.16 |
| Miscellaneous | | | | | | | | | | |
| Haircut-female | Female Hair Cut | Per Person | 116.67 | 119.44 | 2.33 | 116.67 | 150.00 | 28.57 | 116.67 | 28.57 |
| Baby diapers | Huggies / Small Size | 1 Packet | 114.76 | 125.61 | 8.64 | 120.43 | 133.33 | 10.72 | 122.50 | 8.84 |
| Sanitary pads | Stay Free | 1 Packet | 18.98 | 18.68 | -1.64 | 17.50 | 14.00 | -20.00 | 19.40 | -27.84 |
| Body lotion | Enchanteaur Lotion | 200 Ml | 31.75 | 32.35 | 1.86 | 32.33 | 27.43 | -15.17 | 32.44 | -15.46 |
| Baby cologne | Baby Cheramy Colone | 175 ml | 19.22 | 19.58 | 1.84 | 19.00 | 30.00 | 57.89 | 19.00 | 57.89 |
| Hair cream | Max | 175 ml | 23.16 | 25.79 | 10.20 | 26.00 | 31.00 | 19.23 | 26.00 | 19.23 |
| Hair cream | Elite | 175 ml | 22.70 | 23.72 | 4.30 | 23.50 | 31.00 | 31.91 | 21.50 | 44.19 |
| Hair cream | Gatsby | 175 ml | 23.24 | 22.49 | -3.32 | 20.80 | 17.50 | -15.87 | 24.00 | -27.08 |
| Shampoo | Emerone | 200 Ml | 15.58 | 16.28 | 4.32 | 15.44 | 21.00 | 35.97 | 16.73 | 25.54 |
| Shampoo | Head & shoulders | 200 Ml | 30.48 | 31.03 | 1.77 | 31.89 | 33.63 | 5.44 | 30.00 | 12.08 |
| Body lotion | Nivea Lotion | 200 Ml | 36.79 | 39.92 | 7.83 | 39.33 | 52.75 | 34.11 | 37.50 | 40.67 |

Annex 2: Male' - Consumer Price Index and Inflation rates by Major categories

| | Consumer Price Index - CPI (June 2004 =100) | | | | | | | | | | | | | | | | | Inflation Rates % change in Consumer Price Index - CPI | | | | | | | | | | | | | | | | | | |
|----------------------|--|----------------------|--------------------------------------|-----------------------------------|----------|------------|------------------------|---|---------------------------------|--|-----------|--------------|------------------|-------------------------|---------------|---------------------------------|------------------------------------|--|--------|----------------------|-----------------------------------|-----------------------------------|--------|---------|---------------------|--|----------------------------|---|--------|-----------|---------------|----------------------|-----------|-----------------------------|--------------------------------|--------------------|
| | Total | Total Excluding Fish | 1. Food and beverages Including Fish | Food and beverages Excluding Fish | 1.1 Fish | 2. Tobacco | 3. Clothing & footwear | 4. Housing, water, electricity, gas & other fuels | 4.2. Actual rentals for housing | 5. Furnishing, household equipments & routine maintenance of | 6. Health | 7. Transport | 8. Communication | 9. Recreation & culture | 10. Education | 11. Hotels, cafes & restaurants | 12. Miscellaneous goods & services | 13. Religious activity | Total | Total Excluding Fish | Food and beverages Including Fish | Food and beverages Excluding Fish | Fish | Tobacco | Clothing & footwear | Housing, water, electricity, gas & other fuels | Actual rentals for housing | Furnishing, household equipments & routine maintenance of | Health | Transport | Communication | Recreation & culture | Education | Hotels, cafes & restaurants | Miscellaneous goods & services | Religious activity |
| Weights | 100.00 | 95.05 | 27.38 | 22.43 | 4.95 | 1.91 | 5.01 | 25.15 | 14.67 | 5.83 | 5.64 | 5.98 | 7.86 | 4.30 | 3.10 | 1.57 | 6.05 | 0.22 | 100.00 | 95.05 | 27.38 | 22.43 | 4.95 | 1.91 | 5.01 | 25.15 | 14.67 | 5.83 | 5.64 | 5.98 | 7.86 | 4.30 | 3.10 | 1.57 | 6.05 | 0.22 |
| 2009 | 130.21 | 130.13 | 151.57 | 155.95 | 131.68 | 111.35 | 109.30 | 131.18 | 143.81 | 129.43 | 151.16 | 153.56 | 61.32 | 88.34 | 150.19 | 141.33 | 118.07 | 100.00 | 4.53 | 5.48 | 0.52 | 2.93 | -10.70 | -1.80 | 3.21 | 7.82 | 14.29 | 10.94 | 2.25 | 0.98 | -0.75 | 5.01 | 35.09 | 2.57 | 7.10 | 0.00 |
| 2010 | 138.21 | 138.02 | 162.90 | 167.54 | 141.88 | 110.98 | 112.54 | 141.13 | 153.04 | 137.17 | 158.21 | 158.66 | 61.46 | 93.41 | 164.38 | 145.89 | 123.88 | 100.00 | 6.15 | 6.07 | 7.48 | 7.43 | 7.74 | -0.33 | 2.96 | 7.59 | 6.42 | 5.98 | 4.66 | 3.32 | 0.23 | 5.74 | 9.44 | 3.23 | 4.93 | 0.00 |
| May 2009 to Apr 2010 | 132.34 | 132.57 | 152.26 | 157.66 | 127.81 | 111.03 | 111.53 | 135.00 | 148.05 | 131.54 | 153.13 | 154.34 | 61.35 | 91.23 | 158.95 | 142.90 | 120.88 | 100.00 | 6.89 | 6.15 | 11.66 | 9.86 | 21.72 | 1.47 | 1.78 | 5.88 | 5.13 | 4.81 | 5.07 | 4.60 | 0.18 | 2.60 | 10.59 | 3.11 | 2.80 | 0.00 |
| May 2010 to Apr2011 | 141.46 | 140.72 | 170.01 | 173.20 | 155.57 | 112.67 | 113.52 | 142.93 | 155.65 | 137.87 | 160.88 | 161.44 | 61.46 | 93.61 | 175.78 | 147.34 | 124.26 | 100.00 | | | | | | | | | | | | | | | | | | |
| Apr 2011 /Apr 2010 | | | | | | | | | | | | | | | | | | | | | | | | | | | | | | | | | | | | |
| 2010 Apr | 136.37 | 136.22 | 156.24 | 159.99 | 139.23 | 111.55 | 111.70 | 140.38 | 151.15 | 138.51 | 157.81 | 158.73 | 61.46 | 93.30 | 166.41 | 146.73 | 125.08 | 100.00 | 0.87 | 0.79 | 0.20 | -0.20 | 2.36 | 0.17 | -2.36 | 1.04 | 0.31 | 2.99 | 0.27 | 1.86 | 0.00 | 0.80 | 5.14 | 0.71 | 1.74 | 0.00 |
| May | 136.54 | 136.23 | 156.88 | 160.07 | 142.45 | 110.22 | 112.09 | 140.39 | 151.56 | 138.57 | 158.07 | 158.73 | 61.46 | 93.27 | 166.41 | 146.73 | 124.69 | 100.00 | 0.12 | 0.01 | 0.42 | 0.05 | 2.31 | -1.20 | 0.35 | 0.01 | 0.27 | 0.04 | 0.17 | 0.00 | -0.03 | 0.00 | 0.00 | -0.31 | 0.00 | |
| June | 138.02 | 137.48 | 161.42 | 164.28 | 148.48 | 109.82 | 112.09 | 141.06 | 152.71 | 138.60 | 158.07 | 159.91 | 61.46 | 93.34 | 166.41 | 146.73 | 124.75 | 100.00 | 1.09 | 0.92 | 2.89 | 2.63 | 4.23 | -0.36 | 0.00 | 0.48 | 0.76 | 0.02 | 0.00 | 0.75 | 0.00 | 0.07 | 0.00 | 0.00 | 0.05 | 0.00 |
| July | 141.04 | 139.92 | 172.30 | 174.41 | 162.73 | 109.75 | 111.77 | 141.32 | 152.96 | 137.96 | 159.22 | 159.91 | 61.46 | 93.91 | 166.41 | 146.73 | 123.85 | 100.00 | 2.19 | 1.77 | 6.74 | 6.17 | 9.60 | -0.07 | -0.29 | 0.18 | 0.16 | -0.46 | 0.73 | 0.00 | 0.00 | 0.62 | 0.00 | 0.00 | -0.72 | 0.00 |
| Aug | 141.94 | 140.28 | 174.68 | 174.87 | 173.84 | 110.51 | 111.77 | 142.14 | 154.17 | 138.09 | 159.22 | 159.86 | 61.46 | 93.88 | 166.41 | 146.73 | 124.10 | 100.00 | 0.63 | 0.26 | 1.38 | 0.26 | 6.83 | 0.70 | 0.00 | 0.58 | 0.79 | 0.09 | 0.00 | -0.03 | 0.00 | -0.04 | 0.00 | 0.00 | 0.20 | 0.00 |
| Sep | 140.11 | 138.98 | 167.70 | 169.00 | 161.81 | 110.36 | 111.77 | 142.49 | 154.77 | 138.11 | 159.22 | 159.86 | 61.46 | 93.88 | 166.41 | 146.73 | 124.10 | 100.00 | -1.29 | -0.92 | -4.00 | -3.35 | -6.92 | -0.14 | 0.00 | 0.25 | 0.39 | 0.01 | 0.00 | 0.00 | 0.00 | 0.00 | 0.00 | 0.00 | 0.00 | 0.00 |
| Oct | 139.79 | 139.48 | 166.01 | 170.44 | 145.93 | 111.27 | 112.06 | 142.87 | 155.43 | 138.18 | 159.22 | 159.86 | 61.46 | 93.88 | 166.41 | 146.73 | 124.30 | 100.00 | -0.23 | 0.35 | -1.01 | 0.85 | -9.81 | 0.83 | 0.26 | 0.27 | 0.43 | 0.05 | 0.00 | 0.00 | 0.00 | 0.00 | 0.00 | 0.00 | 0.16 | 0.00 |
| Nov | 140.46 | 140.75 | 167.72 | 174.99 | 134.73 | 111.27 | 112.22 | 143.46 | 156.43 | 138.21 | 159.24 | 159.86 | 61.46 | 93.88 | 166.41 | 146.73 | 124.93 | 100.00 | 0.47 | 0.92 | 1.03 | 2.67 | -7.67 | 0.00 | 0.14 | 0.41 | 0.64 | 0.02 | 0.01 | 0.00 | 0.00 | 0.00 | 0.00 | 0.00 | 0.51 | 0.00 |
| Dec | 142.34 | 142.78 | 174.75 | 183.74 | 133.95 | 113.39 | 112.26 | 143.77 | 157.04 | 136.80 | 159.24 | 159.86 | 61.46 | 93.88 | 166.41 | 145.72 | 123.90 | 100.00 | 1.34 | 1.44 | 4.19 | 5.00 | -0.58 | 1.90 | 0.03 | 0.22 | 0.39 | -1.02 | 0.00 | 0.00 | 0.00 | 0.00 | 0.00 | -0.69 | -0.83 | 0.00 |
| 2011 Jan | 143.22 | 143.13 | 172.93 | 179.13 | 144.84 | 114.97 | 114.51 | 143.89 | 157.26 | 137.18 | 162.88 | 162.00 | 61.46 | 94.36 | 194.52 | 145.72 | 123.12 | 100.00 | 0.62 | 0.25 | -1.04 | -2.51 | 8.12 | 1.39 | 2.00 | 0.09 | 0.14 | 0.28 | 2.28 | 1.34 | 0.00 | 0.51 | 16.89 | 0.00 | -0.63 | 0.00 |
| Feb | 141.98 | 141.95 | 167.76 | 173.33 | 142.52 | 115.87 | 114.73 | 144.44 | 158.20 | 137.99 | 162.88 | 162.07 | 61.46 | 94.49 | 194.52 | 145.72 | 122.34 | 100.00 | -0.87 | -0.83 | -2.99 | -3.24 | -1.60 | 0.78 | 0.20 | 0.38 | 0.60 | 0.59 | 0.00 | 0.04 | 0.00 | 0.14 | 0.00 | 0.00 | -0.63 | 0.00 |
| Mar | 142.88 | 142.24 | 169.94 | 173.20 | 155.16 | 115.06 | 116.35 | 144.58 | 158.47 | 138.75 | 165.66 | 162.29 | 61.46 | 94.03 | 194.52 | 145.72 | 122.42 | 100.00 | 0.63 | 0.20 | 1.30 | -0.07 | 8.86 | -0.70 | 1.41 | 0.10 | 0.17 | 0.54 | 1.71 | 0.14 | 0.00 | -0.49 | 0.00 | 0.00 | 0.07 | 0.00 |
| Apr | 149.19 | 145.48 | 188.04 | 180.89 | 220.43 | 119.55 | 120.58 | 144.78 | 158.74 | 135.96 | 167.67 | 173.09 | 61.46 | 90.46 | 194.52 | 158.03 | 128.60 | 100.00 | 4.42 | 2.28 | 10.65 | 4.44 | 42.07 | 3.90 | 3.64 | 0.14 | 0.17 | -2.01 | 1.21 | 6.65 | 0.00 | -3.79 | 0.00 | 8.45 | 5.05 | 0.00 |