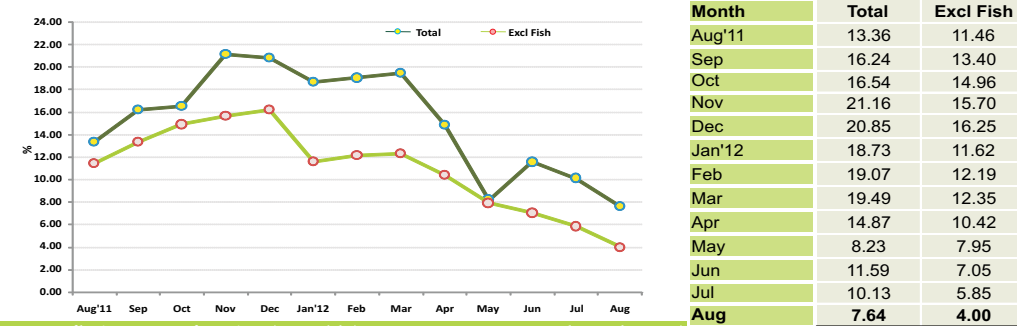


### 1. Inflation Rate of Nation (month on month): August '12 / August '11

To measure the month on month change at one point in time, the index of the month is compared with that of the same month in the preceding year (Eg: August '12 / August '11). The month on month index for August shows an inflation of 7.64% and the inflation excluding fish is 4.00%.

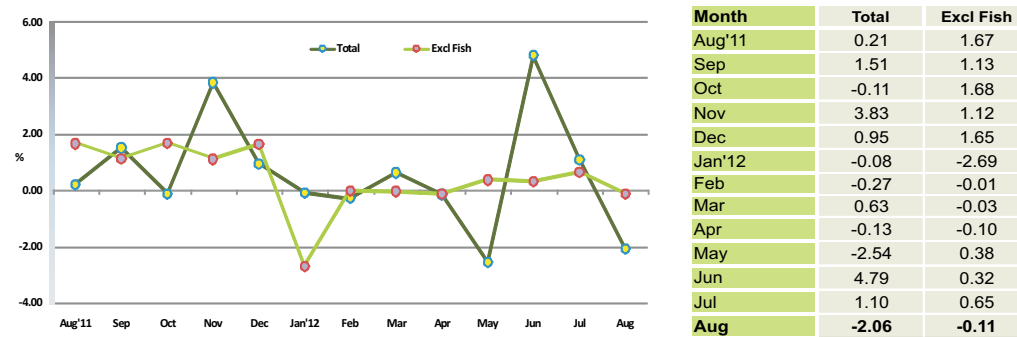
Figure 8. Month on Month inflation Rate of Nation (compared to the same month of the previous year)



### 2. Inflation Rate of Nation (Monthly): August 2012 compared to July 2012

To measure month to month inflation, this month's index is compared with the previous month inflation (for e.g: August '12 / July '12). The monthly inflation for August 2012 is -2.06% and -0.11% is the total excluding fish.

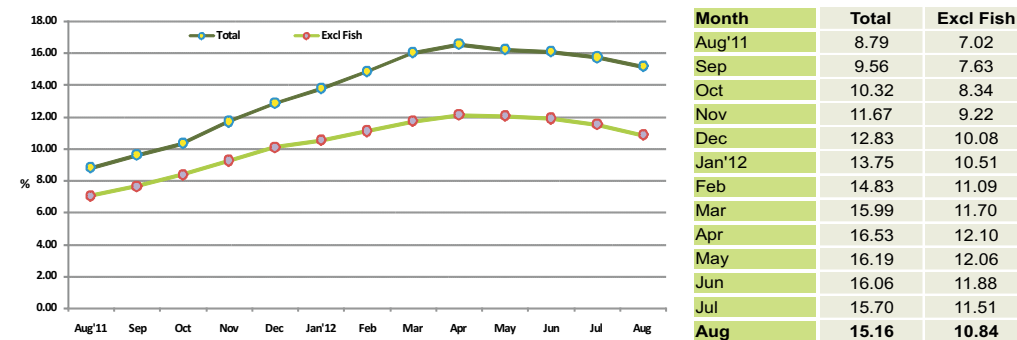
Figure 9. Monthly Inflation Rate of Nation (compared to the previous month)



### 3. Inflation Rate of Nation (Annualized): September '11 to August'12/September '10 to August '11

The annualized inflation rate for any month compares the average for the 12 monthly indices with that of the preceding 12 months (Eg: September '11 to August '12 / September '10 to August '11). This index shows an annual inflation of 15.16%, and the annualized total excluding fish is 10.84%.

Figure 10. Annualized Inflation Rate of Nation (compared to the past 12 month period)



# CONSUMER PRICE INDEX - NATION

Department of National Planning  
Ministry of Finance and Treasury

August 2012

## Consumer Price Index-Nation August 2012

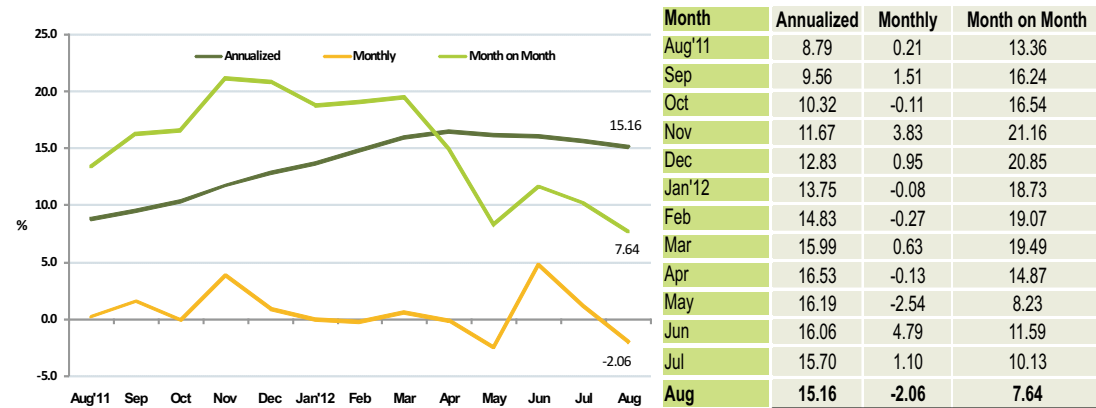
### Inflation Rate of Nation

The Consumer Price Index (CPI) for nation rose at an annualized rate of 15.16 percent in August 2012. Fish and tobacco showed the highest inflation followed by hotels, cafes & restaurants categories.

Monthly CPI of August 2012 decreased by 2.06 percent compared to July 2012. The deflation was mainly driven from fish and food categories.

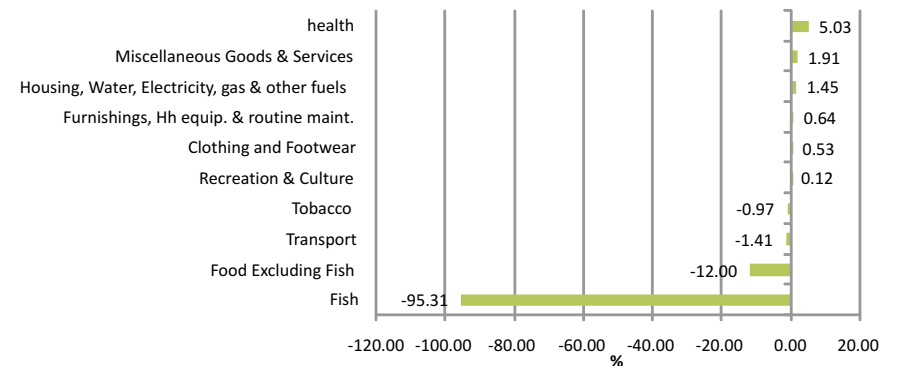
When August 2012 is compared with August 2011, the consumer price index increased by 7.64 percent. Fish category showed the highest inflation followed by tobacco and hotel, cafes & restaurants categories.

Figure 1: Inflation rates of Nation, August 2012



### Main contributions to the change in the CPI - Monthly

Figure 2: Sources of changes in August CPI - Monthly



## Major contributors to the change in the CPI- Monthly basis

Fish category pulled down the national monthly inflation by 95%, whereas health category pulled up the overall monthly inflation by 5%. Additionally food and transport categories also pulled down the overall monthly inflation.

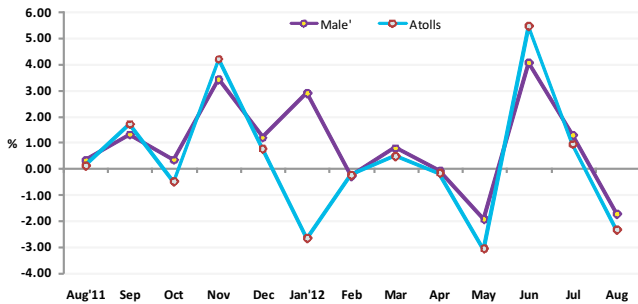
While decrease in the fish category was the major factor contributing to overall monthly deflation, items which contributed most to this were other tuna for which price decreased by 53% while price of smoked fish and price of skipjack tuna decreased by 29% and 15% respectively. However, reef fish prices increased by 38% during the month.

As for the food category, banana prices decreased by 15% in August 2012 when compared to the previous month. Additionally ginger prices decreased by 11% while orange prices decreased by 10%. During the month price of carrot and lemon decreased by 9% and 6% respectively. In addition to this, items such as cucumber, baby food (nestum), chilli powder and dhal prices also declined during the month. However, other food items such as condensed milk, watermelon, chicken sausage, garlic & frozen beef prices increased during the month.

## 1. Inflation Rate of Male' & Atolls (Monthly): compared to previous month

The monthly inflation rate for both Male' and Atolls fluctuated over the past one year period. As seen in figure 3; inflation rate in Male' peak 3 times in last one year. First in Nov 2011 followed by January 2012 and again in Jun 2012. The first two peaks were the results of introduction on GST for selected products in October 2011 and renewal of the GST rate from 3% to 6% in January 2012. The last peak is due to high demand for the food items during the ramazan which drives up the price of fish and other food items. In general, the same trend follows in the Atolls except for January 2012.

**Figure 3. Monthly Inflation Rate, Male' & Atolls, (compared to the previous month)**



**Table 1. Inflation by major categories, National, Male' & Atolls, July 2012 (compared to the previous month)**

Categories	Monthly Inflation- August 2012		
	National	Male'	Atoll
Total	-2.06	-0.08	-2.37
Total Excluding Fish	-0.11	0.35	-0.15
Food and beverages Excluding Fish	-0.79	0.39	-0.45
Fish	-16.16	-3.92	-17.50
Tobacco	-0.59	0.30	-1.04
Clothing & footwear	0.21	2.00	0.19
Housing, water, electricity, gas & other fuels	0.16	0.14	-0.01
Furnishing, household equipments & routine maintenance of	0.35	1.02	0.30
Health	3.66	0.06	0.00
Transport	-0.56	0.23	0.00
Recreation & culture	0.09	0.02	0.02
Miscellaneous goods & services	0.59	0.10	0.35

The slight decline inflation in Atolls depicted for tobacco was the result of decrease in the price of arecanut as well as cigarette while in the Male' arecanut prices increased.

The wide gap in inflation in January 2012, as seen from figure 3 where monthly inflation for atolls reached a -2.69% while that for Male', stood at 2.90% was due to the introduction of universal health care "Aasandha program" which pulled down the health sector inflation rate for the Atolls contributing to the overall deflation seen in the Atolls. Almost all the hospitals in the Atolls are covered under the scheme. However, in Male' where a lot of clinics operate, the program covered only the hospitals.

Over the past 12 months, inflation in both Male' & Atolls exhibited a deflation in the month of February, April and May 2012, due to the decline in prices of fish and some major food items. However, in June 2012, both Male' & Atolls exhibited an inflation and in July 2012 monthly inflation rate for both Male' & Atolls slowed down. And again in August 2012 monthly inflation rate for both Male' & Atolls exhibited a deflation due to the decline in prices of fish and major food items.

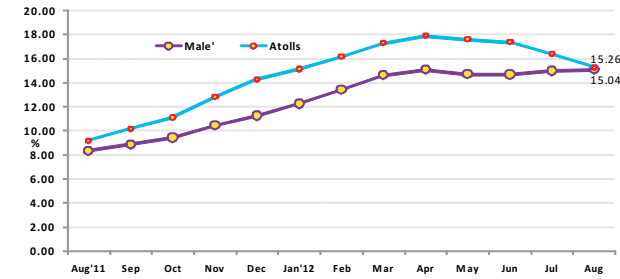
Table 1 shows monthly inflation for major categories by National, Male' and Atolls, August 2012 compared to July 2012. Inflation increased for all major categories depicting a similar pattern for Male' and Atolls with the exception of food & beverages, tobacco & housing, water, electricity, gas & other fuels categories.

In Male' prices of ginger, frozen chicken and dhal increased while these items prices declined in the atolls, resulting in the opposing trends in food category.

## 2. Inflation Rate of Male' & Atolls (Annualized): August '11 to July '12/August'10 to July '11

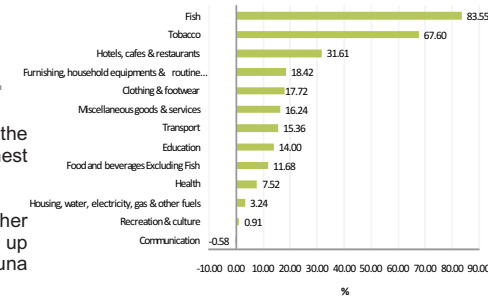
The annualized inflation rate for Male' and Atolls increased over time with atolls inflation rate being highest at the end of April 2012. However, April 2012 onwards the growth rate have slightly slowed down and almost overlapped the annualized inflation rate for both Male' and Atolls. The annualized inflation rate for Atolls is still higher than that of Male', almost 0.5 percentage points in August 2012.

**Figure 4: Annualized Inflation Rate, Male' & Atolls (compared to the past 12 month period)**



From August 2011 onwards inflation rate increased gradually reaching 15.26% in August 2012 for Atolls while for Male' it stood at 15.04%.

**Figure 5: Inflation by major categories in August CPI- Annualized**



Annualized inflation rate of the nation was 15.16%. Fish showed the highest inflation with 84% followed by tobacco at 68%. The third highest category was hotels, cafes & restaurants which registered 32%.

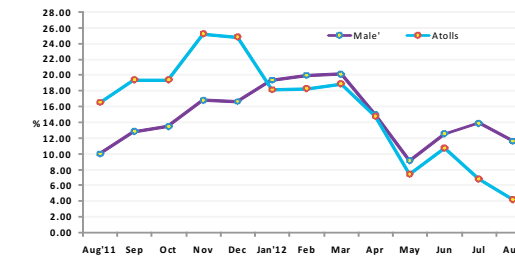
The increase in fish category was due to an increase in the price of other tuna by 164% while skipjack tuna and smoked fish prices also went up by 102% and 30% respectively. Reef fish, dried fish chips and canned tuna fish also increased during this period.

From tobacco category, price of arecanut increased by 63% while cigarette prices also went up to 38%, reflecting the increase in the import duties on cigarette at end of 2011.

As for hotels, cafes & restaurants category, on average prices of breakfast meals went up by 43%. Additionally prices of pizza and restaurant meals went up by 25% and 24% respectively.

## 3. Inflation Rate of Male' & Atolls (month on month): August'12 / August'11

**Figure 6. Month on Month inflation Rate, Male' & Atolls (compared to the same month of the previous year)**



As shown in figure 7, when August 2012 was compared to the same period of previous year, all the categories recorded an inflation with the exception of communication category. Fish showed the highest inflation with 54% followed by tobacco 51% and hotels, cafes & restaurants which registered 25% inflation.

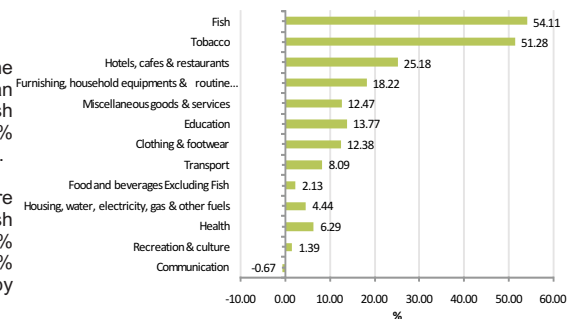
The items which contributed most to the fish category were skipjack tuna for which price rose by 106%. Additionally, fish paste and canned fish prices went up by 7% and 6% respectively. However, other tuna prices decreased by 44% while both smoked fish and reef fish prices also decreased by 31% when two points of time were compared.

As for tobacco category, on average cigarette prices increased by 61% due to increase in import duties of tobacco products in December 2011. Additionally arecanut prices went up by 9%, when compared to August 2011.

Inflation rates in the atolls were higher for the period August to December 2011 than that of Male' as seen in figure 6. The change in trend following January 2012 may be attributed to the fact that health related expenses in the atolls is largely covered under the universal health care program, while in Male' the clinics were not.

March 2012 onwards the month on month inflation rates for both Male' and Atolls slowed down and picked up again in June 2012 and increased further more for Male' in August 2012.

**Figure 7. Inflation by major categories in August CPI- Month on month**



**Annex 1: Average monthly Prices of selected Items, CPI National, Male' & Atolls, Aug 2012**

Description	Specification	Unit	National - Monthly			Male' - Monthly			Atolls - Monthly		
			Average Price		% Chn	Average Price		% Chn	Average Price		% Chn
			July2012	Aug 2012	July 2012 / Aug 2012	July 2012	Aug 2012	July 2012 / Aug 2012	July 2012	Aug 2012	July 2012 / Aug 2012
<b>Food</b>											
Apple	Apple	1 Piece	5.51	5.42	-1.51	5.26	5.05	-3.99	5.75	5.79	0.76
Aracanut	Raw Aracanut / Uncut / Loose	1 kg	99.23	98.97	-0.26	88.64	89.97	1.49	109.81	107.98	-1.67
Baby food - cereal	Nestum / Wheat & Honey	250 Gram / Tin	51.55	49.50	-3.97	52.51	49.54	-5.66	50.59	49.46	-2.22
Baby food - cereal	Promina / Banana	250 Gram / Packet	21.52	21.43	-0.44	21.36	21.51	0.73	21.69	21.34	-1.60
Baby milk powder	Lactogen	450 Gram, tin	76.42	76.43	0.02	74.68	74.57	-0.15	78.16	78.29	0.17
Baby milk powder	Aniface	450 Gram / Tin	164.67	170.14	3.32	160.34	165.16	3.00	169.00	175.13	3.63
Banana	Bonthiraiy	1 Piece	2.41	2.05	-14.96	2.75	2.28	-17.09	2.06	1.81	-12.13
Beans	Fresh Beans	1 kg	54.19	55.58	2.57	58.37	61.15	4.77	50.00	50.00	0.00
Biscuits	Marie Biscuit	400 Gram	23.05	22.92	-0.54	21.50	21.52	0.09	24.60	24.33	-1.09
Bread	Small Bread	1 Piece	12.50	12.71	1.75	12.54	12.61	0.57	12.46	12.82	2.94
Bread	Large	1 Piece	19.82	19.52	-1.54	23.25	23.18	-0.31	16.39	15.86	-3.28
Bread spread	Chocolate Crumpy	225 Gram	46.44	46.31	-0.28	43.47	43.55	0.20	49.41	49.06	-0.71
Cabbage	Fresh Cabbage	1 kg	39.69	39.86	0.44	37.50	34.72	-7.40	41.87	45.00	7.47
Canned baked beans	Baked Beans / Canned	400 Gram	14.59	14.69	0.70	14.58	14.58	0.01	14.59	14.79	1.40
Canned green peas	Green peas / Processed peas / Canned	440 Gram	10.93	10.90	-0.30	11.87	11.80	-0.55	10.00	10.00	0.00
Carrot	Fresh Carrot	1 kg	58.37	53.21	-8.85	64.41	43.92	-31.82	52.33	62.50	19.43
Chicken sausage	Chicken Sausage / Packed	340 Gram	23.59	24.82	5.23	21.18	23.64	11.64	26.00	26.00	0.00
Chillie powder	Chillie Powder / Packed Locally	50 Gram	7.88	7.66	-2.70	7.16	7.15	-0.09	8.60	8.18	-4.87
Cigarette	Marlboro	20 Piece / 1 Pack	39.19	39.46	0.67	38.66	38.66	0.00	39.73	40.25	1.32
Cigarette	Benson	20 Piece / 1 Pack	35.46	31.67	-10.67	38.66	38.66	0.00	32.25	24.69	-23.45
Coffee	Nescafe, Cafe' soluble coffee / Canned	50 Gram	41.04	41.75	1.72	40.22	40.66	1.11	41.87	42.84	2.32
Coke	Dubai coke / Canned	300 Ml	11.43	11.14	-2.58	11.09	11.13	0.34	11.77	11.15	-5.33
Coke	Coka Cola / Large Bottle	1500 Ml	30.84	30.78	-0.19	29.52	29.76	0.82	32.15	31.80	-1.11
Condensed milk	Double Peach	397Gram, tin	16.13	17.42	8.03	16.12	17.26	7.08	16.14	17.59	8.97
Condensed milk	Cow Bell	397 Gram / Tin	15.73	15.64	-0.58	15.49	15.44	-0.30	15.97	15.83	-0.85
Cooking oil	Bemoli Oil	2 Ltr	64.06	63.70	-0.56	62.51	61.76	-1.20	65.61	65.63	0.04
Cooking oil	Sun Flower Oil	2 Ltr	91.95	90.80	-1.25	88.76	85.31	-3.88	95.14	96.28	1.20
Cucumber	Fresh Cucumber	1 kg	28.85	27.48	-4.77	34.96	33.93	-2.94	22.74	21.02	-7.58
Curry powder	Curry Powder / Antelope brand / Canned	340 Gram	41.95	42.41	1.09	42.03	42.14	0.25	41.87	42.68	1.93
Curry powder	Fish curry powder / Packed locally	50 Gram	7.52	7.42	-1.31	7.25	7.07	-2.53	7.79	7.77	-0.17
Curry powder	Chicken curry powder / Packed locally	50 Gram	7.69	7.68	-0.07	7.12	7.17	0.69	8.26	8.20	-0.72
Dhal	Yellow Coloured Dhal	1 kg	47.75	46.75	-2.10	46.33	46.57	0.52	49.17	46.92	-4.57
Dried Chillie	Dried Chillie (Hikimirus) / Loose	1 kg	90.08	90.08	0.00	97.92	97.92	0.00	82.24	82.24	0.00
Egg	Chicken egg / Imported	1 Piece	1.94	1.90	-1.98	1.87	1.75	-6.27	2.02	2.06	1.99
Frozen beef	Frozen Beef	1 kg	49.54	51.86	4.67	70.32	73.96	5.16	28.76	29.76	3.48
Frozen chicken	Frozen chicken / Whole chicken / Pre packed	1 kg	50.60	50.29	-0.62	45.24	45.78	1.20	55.96	54.79	-2.09
Garlic	Garlic	100 Gram	4.48	4.70	4.90	3.81	4.19	10.15	5.15	5.21	1.02
Ginger	Ginger	100 Gram	5.22	4.63	-11.27	3.70	3.93	6.22	6.73	5.33	-20.88
Githeyo Mirus	Dhivehi mirus	1 Piece	3.32	3.28	-1.02	3.31	3.26	-1.33	3.33	3.30	-0.72
Green chillie	Green Chilli / Imported	100 Gram	20.75	20.73	-0.08	9.60	9.57	-0.33	31.90	31.90	0.00
Jam	Tova Brand / Bottle	450 Gram	25.72	25.77	0.20	24.82	25.13	1.25	26.62	26.41	-0.78
Juice-FosterClark	FosterClark / Powdered Juice / Bottled	750 Gram	67.11	67.39	0.42	65.49	65.80	0.47	68.73	68.98	0.37
Juice-Sunquick	Sunquick / Orange Juice / Bottled	840 Ml	80.06	81.31	1.55	80.65	80.05	-0.74	79.47	82.56	3.89
lemon	Imported lemon	1 Piece	2.33	2.19	-5.80	2.34	2.27	-3.18	2.31	2.12	-8.45
Marjerine	Daisy brand tub / Small	250 Gram	27.42	27.07	-1.29	26.45	25.95	-1.89	28.39	28.18	-0.73
Milk powder	Coast	1800 Gram, tin	254.67	249.49	-2.03	240.85	239.21	-0.68	268.49	259.78	-3.24
Milk powder	Anchor Milk	1800 Gram / Tin	259.05	257.98	-0.41	276.91	274.77	-0.77	241.19	241.19	0.00
Milk powder	Nido	1800 Gram / Tin	265.45	264.53	-0.35	264.28	266.00	0.65	266.62	263.06	-1.33
Milo	Nestle Milo Powder / Canned	400 Gram	84.15	85.36	1.44	85.39	85.29	-0.11	82.91	85.43	3.04
Mixed fresh vegetables	Mixed Vegetables	1 kg	48.83	49.79	1.96	53.25	54.01	1.43	44.41	45.56	2.58
Noodles	Mamee Noodles / Packet	85 Gram	4.53	4.52	-0.24	4.14	4.12	-0.41	4.92	4.91	-0.09
Onion	Imported Onion	1 kg	12.45	12.38	-0.57	12.35	11.80	-4.46	12.55	12.96	3.25
Orange	Fresh Orange	1 Piece	4.62	4.15	-10.27	4.01	3.71	-7.41	5.24	4.59	-12.45
Potato	Imported Potato	1 kg	14.21	14.15	-0.42	12.95	12.65	-2.32	15.48	15.66	1.16
Rice-Basmati	Basmati Rice / Pre Packed	1 kg	29.15	29.43	0.98	29.00	28.97	-0.10	29.30	29.90	2.04
Salt	Fine Salt / Packed	500 Gram	5.44	5.43	-0.10	5.25	5.36	2.00	5.62	5.51	-2.06
Sauce	Chillie Sauce / life Brand	335 Gram / Bottled	15.31	15.71	2.63	16.56	16.97	2.46	14.05	14.45	2.83
Sauce	Chillie & Garlic Sauce / life Brand	320 Gram / Bottled	15.87	16.36	3.13	17.24	17.89	3.76	14.49	14.83	2.38
Sugar	Dhoabraali Hakuru	1 kg	5.02	5.06	0.64	4.57	4.62	0.99	5.47	5.49	0.35
Tea leaves-loose	Cylon Tea Leaves ( loose)	1 kg	47.66	47.60	-0.13	46.67	47.12	0.96	48.65	48.08	-1.17
Tea leaves-tea bag	Melesna / 100 tea bag	200 Gram	36.91	38.16	3.39	43.16	45.66	5.79	30.67	30.67	0.00
Tomato	Fresh Tomato	1kg	37.20	38.34	3.05	40.00	42.27	5.67	34.41	34.41	0.00
Watermelon	Water melon (fresh Locally produced)	1 kg	20.73	22.10	6.61	20.73	22.10	6.61	-	-	-
<b>Fish</b>											
Canned fish in brine	Felivaru Canned Fish / Chunk in Brine	185 Gram	18.17	18.05	-0.65	17.59	17.60	0.04	18.75	18.51	-1.30
Other tuna	Other Tuna / Latti	1 kg	97.79	45.67	-53.30	97.79	45.67	-53.30	-	-	-
Reef fish	Reef Fish / Maaniya mas	1 kg	35.17	48.48	37.84	35.17	48.48	37.84	-	-	-
Skipjack tuna	Godha / Kalhubilamas	1 kg	114.73	97.18	-15.30	114.73	97.18	-15.30	-	-	-
Smoked fish	Smoked Fish (Valhoamas) / Loose	1 kg	150.72	106.63	-29.25	151.43	63.26	-58.22	150.00	150.00	0.00
<b>Housing</b>											
Battery	"D" Size Battery / 555 Brand	1 Piece	3.82	3.85	0.59	3.72	3.72	0.00	3.93	3.97	1.15
linolium	Aadhaige Tharafaalu (linolium)	1 Feet	14.55	14.68	0.86	17.10	17.35	1.46	12.00	12.00	0.00
Nylon faivaan	Size 10	1 Pair	14.87	15.21	2.27	14.10	14.00	-0.75	15.64	16.42	4.98
Paint	Wall Paint	5 litre	167.76	166.76	-0.60	198.53	198.53	0.00	137.00	135.00	-1.46

Description	Specification	Unit	National - Monthly			Male' - Monthly			Atolls - Monthly		
			Average Price		% Chn	Average Price		% Chn	Average Price		% Chn
			July2012	Aug 2012	July 2012 / Aug 2012	July 2012	Aug 2012	July 2012 / Aug 2012	July 2012	Aug 2012	July 2012 / Aug 2012
Plywood	3 mm	1 Piece	140.19	142.47	1.62	166.56	166.56	0.00	113.83	118.38	3.99
Sofa Set	Sofa set / Plywood with sponge cushions	1 Piece	6,938.00	7,517.50	8.35	7,261.00	8,420.00	15.96	6,615.00	6,615.00	0.00
Water pump	Pedroller Water Pump / 1 inches	1 Piece	3,143.35	3,165.79	0.71	3,933.00	3,933.00	0.00	2,353.70	2,398.58	1.91
<b>Miscellaneous</b>											
Baby cologne	Baby CheraMy Colone	175 ml	31.42	31.84	1.34	34.61	35.45	2.43	28.23	28.23	0.00
Baby cologne	Johnson & Johnson Colone	175 ml	24.22	24.14	-0.34	21.65	21.67	0.08	26.79	26.61	-0.67
Baby lotion	Johnson & Johnson Baby Lotion	200 MI, bottle	35.67	35.98	0.87	36.21	36.23	0.05	35.12	35.73	1.71
Baby soap	Johnson Baby SoAQ	100 Gram	10.70	10.62	-0.71	11.75	11.60	-1.30	9.65	9.65	0.00
Body lotion	Enchanteaur Lotion	200 MI	36.77	36.72	-0.15	35.92	36.09	0.49	37.63	37.34	-0.76
Cologne	Splash	200 MI	26.10	25.97	-0.48	24.06	23.95	-0.44	28.13	27.99	-0.50
Cologne	Loviline	175 ml	26.22	26.77	2.09	26.16	26.42	0.99	26.27	27.11	3.18
Facial cream	Fair & Lovely / Facial Cream	25 Gram	22.78	23.76	4.28	23.28	24.67	5.97	22.29	22.84	2.51
Hair cream	Max	175 ml	34.16	34.76	1.74	34.46	35.30	2.46	33.87	34.21	1.01
Hair cream	Elite	175 ml	34.52	34.38	-0.43	36.36	36.06	-0.81	32.69	32.69	0.00
Sanitary pads	Stay Free	1 Packet	15.63	15.44	-1.20	16.54	16.54	0.00	14.71	14.34	-2.55
Sanitary pads	Riaa	1 Packet	15.02	15.10	0.52	13.95	13.87	-0.59	16.09	16.33	1.49
Shampoo	Emerone	200 MI	26.64	26.93	1.10	25.48	25.33	-0.59	27.79	28.53	2.65
Shampoo	Head & shoulders	200 MI	38.67	38.76	0.22	38.37	38.96	1.54	38.98	38.56	-1.07
Shampoo	Pantene Pro vitamine	200 MI	37.93	37.64	-0.78	38.49	39.18	1.80	37.38	36.09	-3.44
Soap	Lux Soap	100 Gram	6.41	6.76	5.39	6.96	7.17	3.08	5.86	6.34	8.13
Toothpaste	Aqua fresh,	50 MI	16.29	16.22	-0.40	15.74	15.62	-0.78	16.83	16.82	-0.04

Annex 2: Average annual Prices of of selected Items, CPI National, Male' & Atolls, August 2012

Description	Specification	Unit	National - Annualized				Male' - Annualized			Atolls - Annualized			
			Average 12 monthly price				Average 12 monthly price			Average 12 monthly price			
			September 2010-August 2011	September 2011-August 2012	% Chn		September 2010-August 2011	September 2011-August 2012	% Chn		September 2010-August 2011	September 2011-August 2012	% Chn
<b>Food</b>													
Apollo	Milk choco / Wafer cream	1 Piece	1.50	2.22	47.57		1.50	2.22	47.57		-	-	-
Apple	Apple	1 Piece	5.20	5.58	7.39		5.03	5.41	7.62		5.37	5.76	7.17
Aracanut	Raw Aracanut / Uncut / Loose	1 kg	64.60	105.18	62.81		63.87	99.62	55.96		65.33	110.75	69.51
Baby food - cereal	Nestum / Wheat & Honey	250 Gram / Tin	40.03	48.24	20.50		40.25	48.92	21.55		39.81	47.55	19.44
Baby food - cereal	Promina / Banana	250 Gram / Packet	17.99	20.81	15.68		17.36	20.46	17.85		18.62	21.16	13.66
Baby food - fruit	Purity / Fruit / Secound food	200ml, Bottle	-	-	-		22.19	25.36	14.30		-	-	-
Baby milk powder	Lactogen	450 Gram, tin	68.49	75.41	10.10		65.77	73.37	11.56		71.21	77.45	8.76
Baby milk powder	Anflace	450 Gram / Tin	138.87	170.59	22.85		139.59	168.43	20.66		138.14	172.76	25.06
Baby milk powder	S.M.A / Progress	450 Gram / Tin	115.79	125.77	8.62		112.83	122.58	8.64		118.75	128.96	8.60
Banana	Bonthiraay	1 Piece	1.84	1.95	5.78		2.15	2.30	6.96		1.53	1.60	4.12
Beans	Fresh Beans	1 kg	58.47	58.85	0.65		52.36	56.88	8.62		64.58	60.83	-5.81
Biscuits	Cream Cracker, Khong Guan	200 gram, packet	10.29	13.00	26.32		10.07	12.91	28.25		10.52	13.09	24.48
Biscuits	Marie Biscuit	400 Gram	17.59	22.61	28.54		16.48	21.53	30.64		18.71	23.70	26.70
Bread	Small Bread	1 Piece	10.57	12.37	16.97		11.16	12.49	11.89		9.98	12.24	22.65
Bread	Large	1 Piece	18.11	19.49	7.61		21.58	23.22	7.61		14.64	15.76	7.61
Bread spread	Chocolate Crumpy	225 Gram	37.66	42.89	13.91		36.19	40.77	12.65		39.13	45.02	15.07
Bun	Small Buns / Un packed	1 Piece	0.79	0.77	-1.77		0.49	0.56	13.87		1.08	0.99	-8.82
Butter bun	butter buns / Packed	1 Piece	3.53	4.35	23.44		3.74	4.08	9.18		3.32	4.63	39.52
Cabbage	Fresh Cabbage	1 kg	32.03	34.55	7.87		29.01	31.06	7.07		35.06	38.05	8.53
Candy	Solano	1 Piece / 25 Gram	0.40	0.42	4.39		0.45	0.39	-12.96		0.36	0.45	26.33
Canned baked beans	Baked Beans / Canned	400 Gram	11.83	14.30	20.87		11.61	14.04	20.87		12.04	14.56	20.88
Canned green peas	Green peas / Processed peas / Canned	440 Gram	8.48	10.56	24.49		8.63	11.11	28.82		8.33	10.00	20.00
Canned mixed fruits	Canned Mixed Fruit / Small	398 Gram	27.25	29.38	7.82		27.80	28.16	1.30		26.70	30.60	14.61
Canned pine Apple	Canned Pine AApple	567 Gram	16.58	23.53	41.89		16.48	22.72	37.91		16.69	24.34	45.82
Carrot	Fresh Carrot	1 kg	31.61	37.07	17.29		26.79	33.10	23.55		36.42	41.04	12.68
Chicken drumsticks	Chicken drumstick	1 kg	55.29	74.63	34.97		55.29	74.63	34.97		-	-	-
Chicken sausage	Chicken Sausage / Packed	340 Gram	21.10	23.57	11.70		18.62	21.76	16.89		23.58	25.38	7.60
Chilli powder	Chillie Powder / Packed Locally	50 Gram	5.75	7.44	29.57		5.46	6.78	24.27		6.03	8.11	34.36
Cigarette	Marlboro	20 Piece / 1 Pack	20.57	35.39	72.04		20.46	35.53	73.68		20.68	35.25	70.42
Cigarette	Benson	20 Piece / 1 Pack	19.85	32.13	61.91		19.81	35.53	79.31		19.88	28.74	44.57
Coconut	Medium size / Coconut	1 Piece	6.74	4.81	-28.68		6.74	4.81	-28.68		-	-	-
Coffee	Nescafe, Cafe' soluble coffee / Canned	50 Gram	33.10	41.19	24.45		33.31	41.17	23.61		32.89	41.21	25.31
Coke	Dubai coke / Canned	300 Ml	8.07	10.90	35.12		7.88	10.85	37.77		8.26	10.95	32.59
Coke	Coka Cola / Large Bottle	1500 Ml	26.07	30.92	18.64		25.51	29.76	16.64		26.62	32.09	20.56
Condensed milk	Double Peach	397Gram, tin	12.52	15.93	27.22		12.23	15.50	26.76		12.81	16.36	27.66
Condensed milk	Cow Bell	397 Gram / Tin	12.07	15.33	26.96		11.62	15.26	31.30		12.52	15.39	22.92
Cooking oil	Bemoli Oil	2 Ltr	56.08	66.23	18.09		55.69	62.89	12.92		56.47	69.57	23.20
Cooking oil	Sun Flower Oil	2 Ltr	81.12	98.63	21.59		80.28	98.57	22.79		81.97	98.70	20.41
Corn flake	Celloggs / Wheat and Honey	300 Gram	43.74	38.30	-12.44		42.49	44.23	4.11		45.00	32.38	-28.06
Cucumber	Fresh Cucumber	1 kg	23.90	25.87	8.27		27.48	32.11	16.83		20.31	19.63	-3.33
Curry powder	Curry Powder / Antelope brand / Canned	340 Gram	30.62	40.98	33.85		32.10	41.89	30.50		29.14	40.08	37.53
Curry powder	Fish curry powder / Packed locally	50 Gram	5.62	7.25	28.92		5.44	6.84	25.71		5.80	7.66	31.93
Curry powder	Chicken curry powder / Packed locally	50 Gram	5.64	7.25	28.64		5.47	6.90	26.02		5.80	7.60	31.11
Dairy milk	Dutch Lady / Milk Pack / Small	250 Ml	7.78	10.13	30.34		7.73	9.72	25.68		7.82	10.55	34.93
Dhal	Yellow Coloured Dhal	1 kg	45.90	49.05	6.87		45.07	47.65	5.73		46.73	50.45	7.98
Dried Chilli	Dried Chilli (Hikimirus) / Loose	1 kg	59.44	87.06	46.46		57.92	90.00	55.38		60.97	84.12	37.99
Egg	Chicken egg / Imported	1 Piece	1.66	1.81	8.99		1.61	1.71	5.74		1.71	1.92	12.05
Frozen beef	Frozen Beef	1 kg	57.13	63.58	11.29		51.66	69.70	34.93		62.60	57.46	5.73
Frozen chicken	Frozen chicken / Whole chicken / Pre pac	1 kg	45.46	57.01	25.40		42.29	53.55	26.64		48.64	60.46	24.31
Garlic	Garlic	100 Gram	7.48	4.89	-34.56		7.21	3.84	-46.68		7.75	5.95	-23.29
Ginger	Ginger	100 Gram	6.34	5.38	-15.16		5.29	3.94	-25.55		7.40	6.82	-7.73
Githeyo Mirus	Dhivehi mirus	1 Piece	2.76	2.96	7.39		2.82	2.77	-1.60		2.70	3.15	16.79
Green chilli	Green Chilli / Imported	100 Gram	12.08	17.82	47.45		8.79	8.21	-6.60		15.38	27.42	78.36
Ice cream	Chocolate Ice cream / Tub	1 Ltr	47.99	61.34	27.81		47.99	61.34	27.81		-	-	-
Jam	Tova Brand / Bottle	450 Gram	22.37	25.41	13.59		22.59	24.96	10.52		22.16	25.87	16.72
Juice-FosterClark	FosterClark / Powdered Juice / Bottled	750 Gram	57.23	66.56	16.31		56.93	65.67	15.35		57.52	67.45	17.26
Juice-Sunquick	Sunquick / Orange Juice / Bottled	840 Ml	60.04	74.86	24.67		58.77	74.60	26.93		61.32	75.11	22.50
lemon	Imported lemon	1 Piece	1.98	2.18	9.81		1.89	2.19	15.88		2.08	2.17	4.27
Marjerine	Daisy brand tub / Small	250 Gram	21.89	26.74	22.19		22.24	26.44	18.85		21.53	27.05	25.65
Milk powder	Coast	1800 Gram, tin	218.62	261.19	19.47		216.25	250.42	15.80		220.99	271.97	23.07
Milk powder	Anchor Milk	1800 Gram / Tin	220.90	255.16	15.51		224.32	278.12	23.99		217.49	232.21	6.77
Milk powder	Nido	1800 Gram / Tin	208.49	269.38	29.20		210.06	272.64	29.79		206.92	266.12	28.61
Milo	Nestle Milo Powder / Canned	400 Gram	58.69	82.28	40.19		60.16	84.47	40.40		57.22	80.09	39.97
Noodles	Mamee Noodles / Packet	85 Gram	3.92	4.58	16.60		3.71	4.17	12.25		4.13	4.98	20.50
Onion	Imported Onion	1 kg	21.96	14.43	-34.30		19.91	13.73	-31.06		24.00	15.12	-36.99
Orange	Fresh Orange	1 Piece	4.35	4.44	2.08		4.08	3.90	-4.27		4.62	4.97	7.69
Salt	Fine Salt / Packed	500 Gram	4.95	5.40	9.00		4.73	5.19	9.78		5.17	5.60	8.29
Saltish short-eats	Handulu gulha	1 Piece	1.61	1.45	-9.78		1.58	1.23	-22.19		1.63	1.67	2.27

Description	Specification	Unit	National - Annualized			Male' - Annualized			Atolls - Annualized		
			Average 12 monthly price			Average 12 monthly price			Average 12 monthly price		
			September 2010-August 2011	September 2011-August 2012	% Chn	September 2010-August 2011	September 2011-August 2012	% Chn	September 2010-August 2011	September 2011-August 2012	% Chn
Sauce	Tomato Sauce / life Brand	320 Gram / Bottled	10.82	13.59	25.62	10.50	14.32	36.31	11.13	12.85	15.53
Sauce	Chillie Sauce / life Brand	335 Gram / Bottled	11.68	14.78	26.46	11.87	15.95	34.31	11.50	13.61	18.36
Sauce	Chillie & Garilic Sauce / life Brand	320 Gram / Bottled	12.61	15.57	23.40	12.93	16.76	29.59	12.29	14.37	16.90
Sweet short-eats	Foni folhi	1 Piece	1.95	2.30	18.09	2.00	2.33	16.74	1.90	2.27	19.51
Tea leaves-loose	Cylon Tea Leaves ( loose)	1 kg	49.19	49.95	1.56	43.38	47.38	9.21	54.99	52.53	-4.48
Tea leaves-tea bag	Today's Taste / 100 tea bag	200 Gram	26.65	34.15	28.14	27.09	34.02	25.57	26.21	34.28	30.79
Tea leaves-tea bag	Melesna / 100 tea bag	200 Gram	28.12	36.34	29.24	29.27	41.68	42.40	26.97	31.00	14.96
Tea leaves-tea bag	Akbar / 100 tea bag	200 Gram	27.08	36.35	34.21	27.58	35.14	27.44	26.59	37.55	41.22
Tomato	Fresh Tomato	1Kg	31.63	34.65	9.55	31.16	35.31	13.29	32.09	33.99	5.92
Tomato paste	Tomato Paste / Small can	70 Gram	2.73	3.02	10.64	2.50	2.92	16.65	2.96	3.12	5.57
Watermelon	Water melon (fresh Localy produced)	1 kg	-	-	-	15.84	23.20	46.42	-	-	-
<b>Hotel, cafes &amp; resturants</b>											
Meals	4 roshi / 1fish curry / 1 black tea / 1 dhuf Per person		17.33	24.10	39.04	17.33	24.10	39.04	-	-	-
Meals	4 roshi / 1 chickencurry / 1 black tea /1 d Per person		26.50	38.69	46.01	26.50	38.69	46.01	-	-	-
Pizza	Tuna Mushroom	whole pizza	69.72	87.16	25.00	69.72	87.16	25.00	-	-	-
Restaurant meals	Fish & Chips	1 plate	48.35	59.64	23.35	48.35	59.64	23.35	-	-	-
Restaurant meals	Nasi Goreng	1 plate	52.33	64.75	23.73	52.33	64.75	23.73	-	-	-
<b>Fish</b>											
Canned fish in brine	Felivaru Canned Fish / Chunk in Brine	185 Gram	14.92	17.54	17.54	15.07	17.24	14.39	14.78	17.84	20.75
Canned fish in oil	Felivaru canned fish / Chunk in Oil	185 Gram	16.84	18.95	12.54	16.52	18.36	11.13	17.16	19.54	13.89
Dried fish chips	Pre packed Dried fish chips	100 Gram	11.18	13.33	19.26	11.18	13.33	19.26	-	-	-
Other tuna	Other Tuna / Latti	1 kg	29.67	78.33	164.04	29.67	78.33	164.04	-	-	-
Reef fish	Reef Fish / Maaniya mas	1 kg	26.81	31.15	16.17	26.81	31.15	16.17	-	-	-
Skipjack tuna	Godha / Kalhubilamas	1 kg	40.15	81.19	102.21	40.15	81.19	102.21	-	-	-
Smoked fish	Smoked Fish (Valhoamas) / Loose	1 kg	95.76	124.22	29.72	81.53	125.11	53.45	110.00	123.33	12.12
<b>Clothing and Footwear</b>											
Dress material	Most often sold material / Plane / Faatuf 1 Muh		25.29	32.43	28.25	25.70	35.82	39.37	24.88	29.04	16.75
Dress material	Most often sold material / Design / Faatu 1 Muh		33.99	32.30	-4.96	40.00	37.31	-6.73	27.97	27.29	-2.43
Mens jeans	Mend's Jeans / Most Sold Material	1 Piece	222.85	263.58	18.28	228.60	292.70	28.04	217.09	234.45	8.00
Men's sandals	Most recently sold brand	1 Pair	210.81	237.35	12.59	155.42	194.29	25.01	266.20	280.41	5.34
Mens shirt	Men T-Shirt / Most Sold material	1 Piece	174.05	205.95	18.33	175.63	220.02	25.28	172.47	191.88	11.25
Men's shoes	Office Shoes	1 Pair	258.33	359.13	39.02	258.33	359.13	39.02	-	-	-
Mens trousers	Men's Trousers / Long	1 Piece	206.01	236.70	14.89	192.80	235.58	22.19	219.23	237.82	8.48
Mens t-shirt	Men Shirt / Most Sold Brand	1 Piece	159.81	195.15	22.11	161.57	184.62	14.27	158.06	205.67	30.12
Nylon faivaan	Size 10	1 Pair	14.16	14.89	5.17	12.78	14.03	9.79	15.54	15.75	1.37
School shoes	School Shoes/ Girl / Most recently sold	1 Pair	151.26	180.18	19.12	143.75	186.98	30.07	158.76	173.39	9.21
School uniform	School Uniform / Boys / Medium size 14	1 Piece	71.06	121.30	70.71	74.92	122.01	62.86	67.20	120.60	79.46
Tailoring national dress	National dress / Unstrech Material	1 Piece	118.21	128.76	8.93	140.00	150.00	7.14	96.42	107.52	11.51
Tailoring women's blouse	Sweing of blouse	1 Piece	65.41	73.85	12.89	71.46	75.00	4.96	59.37	72.70	22.45
Womens jeans	Women's Jeans / Fade	1 Piece	189.22	208.30	10.08	202.64	222.91	10.01	175.80	193.68	10.17
Women's sandals	Casual (home-wear)	1 Piece	134.72	171.19	27.07	137.50	195.00	41.82	131.94	147.37	11.69
Womens t-shirt	Ladies T - shirt / Most sold Brand	1 Piece	150.48	170.31	13.18	159.30	193.71	21.61	141.67	146.91	3.70
<b>Housing</b>											
Battery	"D" Size Battery / 555 Brand	1 Piece	3.19	3.77	18.07	3.01	3.67	21.92	3.38	3.87	14.64
Bedsheet	Single Bed sheet / Odinary brand	1 Piece	63.83	69.24	8.48	41.29	54.60	32.23	86.36	83.87	-2.88
Cement	Cement bag	50 kg	92.79	116.88	25.97	85.00	110.89	30.46	100.57	122.88	22.18
Chair	PlasticChair / large / without handle	1 Piece	132.74	181.10	36.44	130.00	154.16	18.59	135.47	208.04	53.57
Construction charges	thakethi dheegen / in ground floor / aadl 1 sq foot		4.61	4.67	1.40	5.00	5.16	3.21	4.22	4.19	-0.74
Cooking gas	Cooking gas / Excluding Transport cost	13 Kg	291.76	340.26	16.63	322.33	390.00	20.99	261.18	290.53	11.24
Fan	Electric fan (Ceiling) / Usha Brand / 43 in	1 Piece	461.76	520.15	12.65	453.02	492.25	8.66	470.49	548.05	16.49
Glasses	Plain Glass / Medium Size	1 Piece	6.44	8.25	28.09	6.19	7.48	20.80	6.68	9.01	34.83
House rent index	Average house rent index	Index	157.85	164.85	4.43	157.85	164.85	4.43	-	-	-
Insecticides	Insectisides / Mosfly Brand / Small Bottle 400 Ml		35.74	43.93	22.91	34.16	42.55	24.57	37.33	45.31	21.39
Kerosine oil	Kerosine oil	1 Ltr	13.38	16.79	25.48	12.67	16.51	30.37	14.10	17.07	21.09
Light tube	Fluorescent tube / 2 feet / White Colour	1 Piece	12.88	15.10	17.24	11.78	15.69	33.19	13.98	14.51	3.80
Linolium	Aadhaige Tharafaalu (linolium)	1 Feet	9.72	13.90	43.05	9.50	16.14	69.93	9.93	11.65	17.34
Mattress	Single / kurlon or Temptation	1 Piece	2,289.80	2,663.64	16.33	2,590.63	3,392.27	30.94	1,988.98	1,935.00	-2.71
Paint	Wall Paint	5 litre	196.41	163.27	-16.87	171.92	191.56	11.43	220.90	134.97	-38.90
Plywood	3 mm	1 Piece	115.41	130.66	13.22	117.43	147.52	25.62	113.39	113.81	0.37
Refrigerator	Forest free Refrigerator / 50 kg / Hitachi	1 Piece	4,657.90	6,307.90	35.42	4,308.42	6,606.15	53.33	5,007.38	6,009.64	20.02
Repairs to HH AQpliance	Washing machine Repair / Changing of El Per seal		250.00	258.02	3.21	250.00	258.02	3.21	250.00	258.02	3.21
Roofing sheet	0.6 mm / 1 feet	1 Piece	23.53	31.16	32.46	25.81	29.04	12.49	21.24	33.29	56.73
Single bed	Single bed / With fancy Plywood	1 Piece	1,677.52	2,014.11	20.06	1,551.04	2,228.23	43.66	1,804.00	1,800.00	-0.22
Sofa Set	Sofa set / Plywood with sponge cusions	1 Piece	6,216.04	7,303.39	17.49	5,835.42	7,991.77	36.95	6,596.67	6,615.00	0.28
Washing power	Soklin Brand Washing powder Pack	1 Kg	26.75	29.89	11.71	21.75	22.82	4.94	31.76	36.95	16.34
Washing power	B 29 Brand Washing powder Pack	1 Kg	22.41	27.18	21.30	19.22	23.02	19.72	25.59	31.35	22.49
Water pump	Pedroller Water Pump / 1 inches	1 Piece	2,565.19	3,058.49	19.23	2,825.22	3,648.77	29.15	2,305.15	2,468.22	7.07
<b>Health</b>											
Chest x-ray	Chest x-ray	Per test	75.07	105.99	41.18	113.94	157.78	38.47	36.20	54.20	49.73
Dental service (ordinary fillir	Dental Service / Ordinary Filling	Per Patient	263.19	287.50	9.23	213.89	250.00	16.88	312.50	325.00	4.00

Description	Specification	Unit	National - Annualized			Male' - Annualized			Atolls - Annualized		
			Average 12 monthly price			Average 12 monthly price			Average 12 monthly price		
			September 2010-August 2011	September 2011-August 2012	% Chn	September 2010-August 2011	September 2011-August 2012	% Chn	September 2010-August 2011	September 2011-August 2012	% Chn
Diegen	Diegen / 200 ml	1 Bottle	25.50	34.82	36.52	27.19	38.22	40.53	23.81	31.42	31.93
Doctor's consulting fee-gene consultation fee / General Doctor		Per Patient	88.28	96.88	9.73	81.25	93.75	15.38	95.31	100.00	4.92
Doctor's consulting fee-spec Doctor consultaton fee / Specialist		Per Patient	131.88	157.15	19.17	131.25	181.81	38.52	132.50	132.50	0.00
Forcevel	Forcevel / 500 mg	1 Tablet	3.22	3.72	15.61	3.54	4.03	13.76	2.89	3.41	17.89
Helibo orange	Helibo Orange / 200 ml	1 Bottle	38.57	51.83	34.35	43.86	58.81	34.08	33.29	44.84	34.71
Panadol	Panadol / 500 mg	1 Tablet	0.42	0.47	10.71	0.50	0.50	0.60	0.35	0.44	25.07
Vicks balm	Vicks Balm / 19 Gram	1 Bottle	10.45	13.68	30.88	10.81	14.28	32.13	10.10	13.09	29.53
Vitamin C	Vitamin C / 500 mg	1 Tablet	0.89	0.87	-2.65	0.85	0.99	16.61	0.94	0.75	-20.18
<b>Transport</b>											
Bicycle	Dahon	1 Piece	1,600.00	1,688.80	5.55	1,850.00	1,909.35	3.21	1,350.00	1,468.25	8.76
Domestic airfare	Male'/Gan/Male'	Per Person / Adult	3,015.67	3,357.05	11.32	3,015.67	3,357.05	11.32	-	-	-
Domestic airfare	Male'/Hanimadhoo/Male'	Per Person / Adult	2,315.67	2,638.77	13.95	2,315.67	2,638.77	13.95	-	-	-
Domestic airfare	Male'/Kade'dhoo/ Male'	Per Person / Adult	2,665.67	3,010.25	12.93	2,665.67	3,010.25	12.93	-	-	-
Domestic airfare	Male'/Kah'dhoo/male'	Per Person / Adult	2,315.67	2,622.10	13.23	2,315.67	2,622.10	13.23	-	-	-
International airfare	Male'/colombo/male'	Per Person	4,381.18	5,321.72	21.47	4,381.18	5,321.72	21.47	-	-	-
Motorcycle	Honda Wave 125 l	1 Piece	45,222.42	55,599.29	22.95	46,633.33	55,892.50	19.86	43,811.50	55,306.07	26.24
Petrol	Petrol	1 Ltr	13.29	16.38	23.29	13.38	16.02	19.72	13.19	16.75	26.92
Taxi fare	Taxi Fare	Per trip	20.94	22.97	9.70	20.00	20.00	0.00	21.88	25.94	18.57
<b>Miscellaneous</b>											
Baby cologne	Baby Cheramyl Colone	175 ml	24.56	31.42	27.91	24.28	34.30	41.23	24.85	28.54	14.88
Baby cologne	Johnson & Johnson Colone	175 ml	21.58	24.21	12.17	20.64	22.24	7.75	22.53	26.18	16.23
Baby diapers	Huggies / Small Size	1 Packet	130.25	146.94	12.81	131.44	146.58	11.52	129.06	147.30	14.13
Baby lotion	Johnson & Johnson Baby Lotion	200 Ml, bottle	30.58	35.43	15.84	30.79	35.34	14.79	30.38	35.51	16.90
Baby soap	Johnson Baby SoAQ	100 Gram	9.43	10.28	8.94	8.79	10.76	22.43	10.08	9.80	-2.82
Body lotion	Enchanteur Lotion	200 Ml	31.99	36.16	13.06	30.97	35.32	14.04	33.00	37.00	12.13
Cable TV charges	Cable Charges	Per Month	220.31	230.14	4.46	250.00	250.00	0.00	190.63	210.27	10.31
Cologne	Splash	200 Ml	20.77	25.68	23.63	20.11	24.42	21.40	21.43	26.94	25.72
Cologne	Loviline	175 ml	21.54	26.52	23.16	22.21	27.54	23.98	20.86	25.51	22.28
Colour box	Swan Brand / Small Size / 12 Colour	1 Box	17.60	20.37	15.77	20.62	25.77	24.98	14.57	14.97	2.73
Facial cream	Fair & Lovely / Facial Cream	25 Gram	17.43	21.48	23.26	16.29	21.65	32.87	18.56	21.31	14.82
Glaze paper	Glase PAQer	1 Piece	1.86	2.29	22.97	1.32	1.81	37.67	2.41	2.77	14.92
Hair cream	Max	175 ml	27.72	33.59	21.16	27.98	34.20	22.24	27.46	32.97	20.07
Hair cream	Elite	175 ml	27.35	33.78	23.50	27.83	35.81	28.68	26.88	31.75	18.15
Hair cream	Gatsby	175 ml	22.43	23.87	6.43	20.10	22.24	10.66	24.76	25.50	3.00
Haircut-female	Female Hair Cut	Per Person	73.75	85.80	16.34	131.25	155.35	18.37	16.25	16.25	0.00
Haircut-men	Male Hair Cut	Per Person	23.32	36.11	54.86	35.38	57.31	61.97	11.25	14.90	32.48
Moniter book	Exercise Book / 200 Pages	1 Book	13.13	15.98	21.68	13.47	16.76	24.50	12.80	15.19	18.71
Pen	Red leaf Pen	1 Piece	4.81	5.20	8.20	4.67	5.20	11.40	4.94	5.20	5.18
Pen	Faster Pen	1 Piece	4.98	5.41	8.83	4.95	5.51	11.39	5.01	5.32	6.30
Recordable CD	Recordable CD / Blank CD	1 Piece	4.55	4.89	7.64	4.08	4.56	11.80	5.02	5.23	4.26
Sanitary pads	Stay Free	1 Packet	13.35	15.17	13.63	13.29	15.61	17.40	13.41	14.73	9.89
Sanitary pads	Riaa	1 Packet	16.13	15.01	-6.96	16.38	13.78	-15.86	15.88	16.23	2.22
Shampoo	Emerone	200 Ml	19.72	26.21	32.88	18.69	25.21	34.85	20.75	27.21	31.11
Shampoo	Head & shoulders	200 Ml	32.63	39.10	19.84	32.84	40.11	22.14	32.42	38.09	17.50
Shampoo	Pantene Pro vitamine	200 Ml	31.07	36.30	16.83	29.57	36.45	23.23	32.57	36.16	11.02
Soap	Lux Soap	100 Gram	4.83	5.97	23.45	4.65	6.26	34.60	5.01	5.67	13.11
Toothpaste	Colgate	50 Ml	12.38	14.28	15.36	11.51	13.45	16.90	13.25	15.11	14.02

Annex 3: Average month on month prices of of selected Items, CPI National, Male' & Atolls, Aug 2012

Description	Specification	Unit	National - Month on Month			Male' - Month on Month			Atolls - Month on Month		
			Average Price			Average Price			Average Price		
			Aug-11	Aug-12	% Chn	Aug-11	Aug-12	% Chn	Aug-11	Aug-12	% Chn
<b>Food</b>											
Apollo	Milk choco / Wafer cream	1 Piece	1.79	2.47	38.43	1.79	2.47	38.43	-	-	-
Apple	Apple	1 Piece	5.17	5.42	4.93	4.94	5.05	2.27	5.39	5.79	7.36
Aracanut	Raw Aracanut / Uncut / Loose	1 kg	90.63	98.97	9.21	91.93	89.97	-2.13	89.33	107.98	20.88
Baby food - cereal	Nestum / Wheat & Honey	250 Gram / Tin	44.30	49.50	11.75	46.38	49.54	6.81	42.21	49.46	17.17
Baby food - cereal	Promina / Banana	250 Gram / Packet	19.23	21.43	11.43	18.68	21.51	15.17	19.78	21.34	7.91
Baby milk powder	Lactogen	450 Gram, tin	73.33	76.43	4.22	70.16	74.57	6.28	76.51	78.29	2.34
Banana	Bonthiraiy	1 Piece	2.02	2.05	1.42	2.51	2.28	-9.27	1.52	1.81	19.08
Beans	Fresh Beans	1 kg	66.27	55.58	-16.13	57.54	61.15	6.28	75.00	50.00	-33.33
Biscuits	Cream Cracker, Khong Guan	200 gram, packet	11.69	13.23	13.17	11.42	13.25	15.99	11.95	13.20	10.47
Biscuits	Marie Biscuit	400 Gram	19.97	22.92	14.77	19.40	21.52	10.91	20.55	24.33	18.41
Bread	Small Bread	1 Piece	11.84	12.71	7.40	12.47	12.61	1.07	11.20	12.82	14.44
Bread	Large	1 Piece	19.41	19.52	0.56	23.29	23.18	-0.46	15.53	15.86	2.10
Bread spread	Chocolate Crumpy	225 Gram	38.13	46.31	21.45	35.30	43.55	23.37	40.95	49.06	19.80
Cabbage	Fresh Cabbage	1 kg	40.51	39.86	-1.59	39.35	34.72	-11.75	41.67	45.00	8.00
Candy	Solano	1 Piece / 25 Gram	0.51	0.39	-24.45	0.60	0.32	-46.44	0.42	0.45	6.58
Canned baked beans	Baked Beans / Canned	400 Gram	13.24	14.69	10.90	12.71	14.58	14.70	13.78	14.79	7.38
Canned green peas	Green peas / Processed peas / Canned	440 Gram	9.60	10.90	13.55	9.20	11.80	28.27	10.00	10.00	0.00
Carrot	Fresh Carrot	1 kg	34.28	53.21	55.21	30.23	43.92	45.27	38.33	62.50	63.04
Chicken sausage	Chicken Sausage / Packed	340 Gram	21.33	24.82	16.34	20.17	23.64	17.22	22.50	26.00	15.56
Chilli powder	Chillie Powder / Packed Locally	50 Gram	6.80	7.66	12.67	6.47	7.15	10.46	7.13	8.18	14.67
Cigarette	Marlboro	20 Piece / 1 Pack	22.37	39.46	76.37	22.00	38.66	75.71	22.74	40.25	77.01
Cigarette	Benson	20 Piece / 1 Pack	21.83	31.67	45.08	22.00	38.66	75.71	21.66	24.69	13.97
Coconut	Medium size / Coconut	1 Piece	5.36	4.34	-19.02	5.36	4.34	-19.02	-	-	-
Coffee	Nescafe, Cafe' soluble coffee / Canned	50 Gram	38.15	41.75	9.44	38.53	40.66	5.53	37.77	42.84	13.43
Coke	Dubai coke / Canned	300 Ml	10.22	11.14	9.02	9.77	11.13	13.94	10.66	11.15	4.51
Coke	Coka Cola / Large Bottle	1500 Ml	29.71	30.78	3.60	28.00	29.76	6.28	31.42	31.80	1.21
Condensed milk	Double Peach	397Gram, tin	15.12	17.42	15.24	15.27	17.26	13.04	14.97	17.59	17.48
Condensed milk	Cow Bell	397 Gram / Tin	14.47	15.64	8.08	14.92	15.44	3.51	14.02	15.83	12.94
Cooking oil	Bemoli Oil	2 Ltr	69.36	63.70	-8.16	68.16	61.76	-9.39	70.55	65.63	-6.97
Cooking oil	Sun Flower Oil	2 Ltr	103.12	90.80	-11.95	111.07	85.31	-23.19	95.18	96.28	1.16
Cucumber	Fresh Cucumber	1 kg	23.25	27.48	18.18	30.08	33.93	12.81	16.42	21.02	28.02
Curry powder	Curry Powder / Antelope brand / Canned	340 Gram	37.96	42.41	11.73	36.61	42.14	15.09	39.30	42.68	8.60
Curry powder	Fish curry powder / Packed locally	50 Gram	6.60	7.42	12.50	6.39	7.07	10.64	6.80	7.77	14.25
Curry powder	Chicken curry powder / Packed locally	50 Gram	6.96	7.68	10.42	6.57	7.17	9.21	7.35	8.20	11.50
Dairy milk	Dutch Lady / Milk Pack / Small	250 Ml	9.62	10.21	6.09	9.31	9.76	4.89	9.93	10.65	7.21
Dhal	Yellow Coloured Dhal	1 kg	47.80	46.75	-2.20	45.30	46.57	2.81	50.30	46.92	-6.72
Dried Chilli	Dried Chilli (Hikimirus) / Loose	1 kg	77.81	90.08	15.76	80.63	97.92	21.45	75.00	82.24	9.65
Egg	Chicken egg / Imported	1 Piece	2.05	1.90	-7.31	1.96	1.75	-10.91	2.14	2.06	-4.01
Flour	Ordinary Flour / loose	1 kg	4.07	4.35	6.97	3.42	3.86	12.84	4.71	4.84	2.70
Frozen beef	Frozen Beef	1 kg	63.04	51.86	-17.74	61.08	73.96	21.08	65.00	29.76	-54.22
Frozen chicken	Frozen chicken / Whole chicken / Pre packer	1 kg	56.99	50.29	-11.77	53.24	45.78	-14.01	60.75	54.79	-9.80
Garlic	Garlic	100 Gram	6.52	4.70	-27.95	4.49	4.19	-6.51	8.56	5.21	-39.19
Ginger	Ginger	100 Gram	5.81	4.63	-20.39	4.48	3.93	-12.32	7.15	5.33	-25.46
Githayo Mirus	Dhivehi mirus	1 Piece	3.65	3.28	-9.96	4.19	3.26	-22.10	3.10	3.30	6.44
Green chilli	Green Chilli / Imported	100 Gram	12.93	20.73	60.31	7.53	9.57	26.98	18.33	31.90	74.01
Ice cream	Chocolate Ice cream / Tub	1 Ltr	-	-	-	50.14	65.38	30.39	-	-	-
Jam	Tova Brand / Bottle	450 Gram	22.40	25.77	15.03	22.29	25.13	12.77	22.52	26.41	17.27
Juice-FosterClark	FosterClark / Powdered Juice / Bottled	750 Gram	63.30	67.39	6.46	62.69	65.80	4.95	63.91	68.98	7.93
Juice-Sunquick	Sunquick / Orange Juice / Bottled	840 Ml	65.05	81.31	25.00	63.15	80.05	26.76	66.94	82.56	23.34
Lemon	Imported lemon	1 Piece	2.17	2.19	0.92	2.05	2.27	10.61	2.30	2.12	-7.74
Marjerine	Daisy brand tub / Small	250 Gram	24.40	27.07	10.93	23.93	25.95	8.44	24.87	28.18	13.32
Milk powder	Coast	1800 Gram, tin	264.85	249.49	-5.80	255.69	239.21	-6.44	274.02	259.78	-5.20
Milk powder	Anchor Milk	1800 Gram / Tin	245.49	257.98	5.09	264.66	274.77	3.82	226.32	241.19	6.57
Milk powder	Nido	1800 Gram / Tin	232.83	264.53	13.62	234.66	266.00	13.35	231.00	263.06	13.88
Milo	Nestle Milo Powder / Canned	400 Gram	68.63	85.36	24.37	70.32	85.29	21.29	66.94	85.43	27.61
Mineral water	Kinley / Small Bottle	500 Ml	4.78	4.04	-15.29	3.10	2.98	-3.76	6.45	5.11	-20.84
Mixed fresh vegetables	Mixed Vegetables	1 kg	42.23	49.79	17.91	41.47	54.01	30.26	42.98	45.56	5.99
Onion	Imported Onion	1 kg	19.81	12.38	-37.53	15.33	11.80	-23.05	24.30	12.96	-46.67
Orange	Fresh Orange	1 Piece	4.38	4.15	-5.32	3.85	3.71	-3.50	4.92	4.59	-6.75
Rice	Ordinary Rice / loose	1 kg	4.96	5.06	1.91	4.45	4.57	2.64	5.47	5.55	1.33
Rice-Basmati	Basmati Rice / Pre Packed	1 kg	26.51	29.43	11.01	25.22	28.97	14.88	27.81	29.90	7.50
Saltish short-eats	Handulu gulha	1 Piece	1.83	1.42	-22.73	2.00	1.17	-41.67	1.67	1.67	0.00
Sauce	Tomato Sauce / life Brand	320 Gram / Bottled	11.75	14.10	19.99	11.40	14.98	31.38	12.11	13.23	9.26
Sauce	Chillie Sauce / life Brand	335 Gram / Bottled	12.76	15.71	23.09	13.17	16.97	28.88	12.36	14.45	16.93
Sauce	Chillie & Garlic Sauce / life Brand	320 Gram / Bottled	13.65	16.36	19.87	13.98	17.89	27.97	13.32	14.83	11.37
Sweet short-eats	Foni folhi	1 Piece	2.06	2.35	14.49	2.00	2.37	18.67	2.11	2.33	10.53
Tea leaves-loose	Cylon Tea Leaves ( loose)	1 kg	52.86	47.60	-9.95	48.90	47.12	-3.64	56.82	48.08	-15.37
Tea leaves-tea bag	Today's Taste / 100 tea bag	200 Gram	31.61	34.87	10.33	32.60	34.39	5.47	30.61	35.36	15.50
Tea leaves-tea bag	Melesna / 100 tea bag	200 Gram	34.82	38.16	9.62	36.97	45.66	23.53	32.67	30.67	-6.12
Tea leaves-tea bag	Akbar / 100 tea bag	200 Gram	32.86	36.59	11.35	34.43	35.25	2.37	31.29	37.93	21.23
Tomato	Fresh Tomato	1Kg	34.94	38.34	9.74	36.54	42.27	15.68	33.33	34.41	3.22
Tomato paste	Tomato Paste / Small can	70 Gram	2.85	2.98	4.27	2.63	2.93	11.44	3.08	3.03	-1.84



Description	Specification	Unit	National - Month on Month			Male' - Month on Month			Atolls - Month on Month		
			Average Price			Average Price			Average Price		
			Aug-11	Aug-12	% Chn	Aug-11	Aug-12	% Chn	Aug-11	Aug-12	% Chn
<b>Hotel, cafes &amp; resturants</b>											
Meals	4 roshi / 1fish curry / 1 black tea / 1 dhufun	Per person	18.00	23.32	29.56	18.00	23.32	29.56	-	-	-
Meals	4 roshi / 1 chickencurry / 1 black tea / 1 dhuf	Per person	33.00	39.00	18.18	33.00	39.00	18.18	-	-	-
Pizza	Tuna Mushroom	whole pizza	78.33	90.03	14.94	78.33	90.03	14.94	-	-	-
Restaurant meals	Fish & Chips	1 plate	50.00	62.87	25.73	50.00	62.87	25.73	-	-	-
Restaurant meals	Nasi Goreng	1 plate	55.00	66.67	21.21	55.00	66.67	21.21	-	-	-
<b>Fish</b>											
Canned fish in brine	Felivaru Canned Fish / Chunk in Brine	185 Gram	16.55	18.05	9.06	17.15	17.60	2.60	15.96	18.51	16.01
Canned fish in oil	Felivaru canned fish / Chunk in Oil	185 Gram	18.65	19.30	3.46	18.29	18.76	2.57	19.02	19.84	4.32
Dried fish chips	Pre packed Dried fish chips	100 Gram	14.14	12.12	-14.26	14.14	12.12	-14.26	-	-	-
Fish paste	Fasmeeru Rihaakuru / Bottled	450 Gram	33.20	35.57	7.14	33.20	35.57	7.14	-	-	-
Other tuna	Other Tuna / Latti	1 kg	80.92	45.67	-43.56	80.92	45.67	-43.56	-	-	-
Reef fish	Reef Fish / Maaniya mas	1 kg	70.00	48.48	-30.74	70.00	48.48	-30.74	-	-	-
Skipjack tuna	Godha / Kalhubilamas	1 kg	47.28	97.18	105.54	47.28	97.18	105.54	-	-	-
Smoked fish	Smoked Fish (Valhoamas) / Loose	1 kg	154.70	106.63	-31.07	179.39	63.26	-64.74	130.00	150.00	15.38
<b>Clothing and Footwear</b>											
Dress material	Most often sold material / Plane / Faatufuh: 1 Muh		26.86	34.27	27.57	27.47	39.04	42.09	26.25	29.50	12.38
Dress material	Most often sold material / Design / Faatufull 1 Muh		32.17	33.33	3.63	40.00	38.00	-5.00	24.33	28.67	17.81
Mens jeans	Mend's Jeans / Most Sold Material	1 Piece	235.98	277.59	17.63	245.61	318.83	29.81	226.36	236.35	4.41
Men's sandals	Most recently sold brand	1 Pair	224.08	245.21	9.43	181.67	203.67	12.11	266.49	286.76	7.60
Mens shirt	Men T-Shirt / Most Sold material	1 Piece	195.49	216.14	10.56	185.00	238.50	28.92	205.98	193.78	-5.93
Mens trousers	Men's Trousers / Long	1 Piece	212.44	256.45	20.71	203.08	259.30	27.69	221.81	253.60	14.33
Mens t-shirt	Men Shirt / Most Sold Brand	1 Piece	171.76	205.08	19.40	163.64	198.80	21.49	179.88	211.36	17.50
Nylon faivaan	Size 10	1 Pair	14.61	15.21	4.09	13.38	14.00	4.66	15.85	16.42	3.62
School shoes	School Shoes/ Girl / Most recently sold	1 Pair	158.61	186.07	17.31	161.67	193.33	19.59	155.56	178.80	14.94
School uniform	School Uniform / Boys / Medium size 14	1 Piece	106.25	121.90	14.73	102.50	121.90	18.93	110.00	121.90	10.82
Sport shoes	Diadora / Indoor tennis shoes / Men	1 Pair	371.35	397.10	6.93	313.33	365.70	16.71	429.38	428.50	-0.20
Tailoring national dress	National dress / Unstrech Material	1 Piece	119.11	127.79	7.28	140.00	150.00	7.14	98.23	105.58	7.48
Tailoring women's blouse	Sweing of blouse	1 Piece	71.81	74.63	3.93	75.00	75.00	0.00	68.61	74.26	8.23
Womens jeans	Women's Jeans / Fade	1 Piece	191.46	219.73	14.77	201.67	236.67	17.36	181.25	202.80	11.89
Women's sandals	Casual (home-wear)	1 Piece	138.13	173.39	25.53	140.00	200.33	43.10	136.25	146.45	7.49
Womens t-shirt	Ladies T - shirt / Most sold Brand	1 Piece	160.80	172.88	7.51	179.10	199.13	11.18	142.50	146.62	2.89
<b>Housing</b>											
Cement	Cement bag	50 kg	104.75	124.60	18.95	97.00	122.00	25.77	112.50	127.20	13.07
Cooking gas	Cooking gas / Excluding Transport cost	13 Kg	321.88	341.90	6.22	360.00	390.00	8.33	283.75	293.79	3.54
House rent index	Average house rent index	Index	159.57	169.69	6.34	159.57	169.69	6.34	-	-	-
Kerosine oil	Kerosine oil	1 Ltr	15.99	17.10	6.93	16.00	16.56	3.50	15.99	17.64	10.36
Paint	Wall Paint	5 litre	152.50	166.76	9.35	175.00	198.53	13.44	130.00	135.00	3.85
Plywood	3 mm	1 Piece	120.00	142.47	18.72	126.67	166.56	31.49	113.33	118.38	4.45
Roofing sheet	0.6 mm / 1 feet	1 Piece	22.63	32.95	45.65	23.50	30.24	28.68	21.75	35.67	63.98
<b>Furnishing</b>											
Battery	"D" Size Battery / 555 Brand	1 Piece	3.40	3.85	13.17	3.03	3.72	22.59	3.76	3.97	5.58
Battery	"D" Size Battery / Eveready Brand	1 Piece	6.07	7.07	16.46	-	-	-	6.07	7.07	16.46
Bedsheet	Single Bed sheet / Ordinary brand	1 Piece	64.43	73.61	14.24	40.70	62.97	54.72	88.17	84.25	-4.44
Chair	PlasticChair / large / without handle	1 Piece	147.08	196.54	33.62	130.00	175.00	34.62	164.17	218.08	32.84
Domestic servants	Salary of Domestic Servants	Per person / Per month	1,285.00	1,542.00	20.00	1,285.00	1,542.00	20.00	-	-	-
Fan	Electric fan (Ceiling) / Usha Brand / 43 inch	1 Piece	473.33	499.97	5.63	470.00	441.74	-6.01	476.67	558.21	17.11
Glasses	Plain Glass / Medium Size	1 Piece	7.06	8.19	16.00	6.46	7.14	10.53	7.66	9.23	20.62
Insecticides	Insectisides / Mosfly Brand / Small Bottle	400 Ml	40.47	45.20	11.67	39.39	43.76	11.11	41.56	46.63	12.21
Light tube	Fluorescent tube / 2 feet / White Colour	1 Piece	13.82	16.50	19.42	12.71	18.42	44.90	14.92	14.58	-2.30
Linolium	Aadhaige Tharafaalu (linolium)	1 Feet	12.83	14.68	14.35	14.50	17.35	19.66	11.17	12.00	7.46
Refrigerator	Forest free Refrigerator / 50 kg/ Hitachi bra	1 Piece	4,444.08	6,905.18	55.38	3,989.00	7,546.31	89.18	4,899.15	6,264.05	27.86
Single bed	Single bed / With fancy Plywood	1 Piece	1,525.00	2,092.50	37.21	1,250.00	2,385.00	90.80	1,800.00	1,800.00	0.00
Stove	2 Sided gas stove / Hitachi brand	1 Piece	477.19	501.78	5.15	450.00	507.93	12.87	504.38	495.63	-1.73
Washing power	Soklin Brand Washing powder Pack	1 Kg	26.61	30.65	15.19	20.65	23.54	14.00	32.56	37.75	15.95
Washing power	B 29 Brand Washing powder Pack	1 Kg	23.80	27.81	16.84	20.25	23.14	14.24	27.35	32.49	18.77
Water pump	Pedroller Water Pump / 1 inches	1 Piece	2,460.92	3,165.79	28.64	2,866.67	3,933.00	37.20	2,055.17	2,398.58	16.71
<b>Health</b>											
Chest x-ray	Chest x-ray	Per test	94.79	90.50	-4.53	123.33	175.00	41.89	66.25	6.00	-90.94
Diegen	Diegen / 200 ml	1 Bottle	28.54	35.65	24.92	31.33	38.33	22.34	25.75	32.97	28.06
Doctor's consulting fee-gener consultation fee / General Doctor		Per Patient	90.63	100.00	10.34	81.25	100.00	23.08	100.00	100.00	0.00
Doctor's consulting fee-specic Doctor consultaton fee / Specialist		Per Patient	136.25	166.25	22.02	140.00	200.00	42.86	132.50	132.50	0.00
Forcevel	Forcevel / 500 mg	1 Tablet	3.33	3.74	12.36	3.67	4.00	9.09	2.99	3.48	16.37
Helibo orange	Helibo Orange / 200 ml	1 Bottle	40.38	53.31	32.03	47.00	58.33	24.11	33.75	48.28	43.05
Panadol	Panadol / 500 mg	1 Tablet	0.43	0.46	6.21	0.50	0.50	0.67	0.36	0.41	13.88
Taxi fare	Taxi Fare	Per trip	21.25	24.38	14.71	20.00	20.00	0.00	22.50	28.75	27.78
Vicks balm	Vicks Balm / 19 Gram	1 Bottle	10.33	14.36	39.00	10.67	14.67	37.50	10.00	14.06	40.61
Vitamin C	Vitamin C / 500 mg	1 Tablet	0.79	0.91	15.87	1.00	1.00	0.00	0.58	0.83	43.48
<b>Transport</b>											
Bicycle	Dahon	1 Piece	1,625.00	1,699.38	4.58	1,850.00	1,914.75	3.50	1,400.00	1,484.00	6.00
Bicycle	Mountain	1 Piece	1,225.00	1,298.50	6.00	1,225.00	1,298.50	6.00	-	-	-
Cleaning of motorcycle	Full cycle	Per vehicle	77.50	82.50	6.45	77.50	82.50	6.45	-	-	-
Domestic airfare	Male'/Gan/Male'	Per Person / Adult	3,206.00	3,392.00	5.80	3,206.00	3,392.00	5.80	-	-	-
Domestic airfare	Male'/Hanimadhoo/Male'	Per Person / Adult	2,506.00	2,650.00	5.75	2,506.00	2,650.00	5.75	-	-	-
Domestic airfare	Male'/Kade'dhoo/ Male'	Per Person / Adult	2,856.00	3,021.00	5.78	2,856.00	3,021.00	5.78	-	-	-

Description	Specification	Unit	National - Month on Month			Male' - Month on Month			Atolls - Month on Month		
			Average Price			Average Price			Average Price		
			Aug-11	Aug-12	% Chn	Aug-11	Aug-12	% Chn	Aug-11	Aug-12	% Chn
Domestic airfare	Male'/Kah'dhoo/male'	Per Person / Adult	2,506.00	2,650.00	5.75	2,506.00	2,650.00	5.75	-	-	-
Motor cycle tyre	Back Tyre	1 Piece	670.00	710.00	5.97	670.00	710.00	5.97	-	-	-
Motor cycle tyre	Front tyre	1 Piece	587.00	651.00	10.90	587.00	651.00	10.90	-	-	-
Motorcycle	Honda Wave 125 H	1 Piece	45,983.33	51,551.33	12.11	45,200.00	50,456.00	11.63	46,766.67	52,646.67	12.57
Petrol	Petrol	1 Ltr	15.73	16.71	6.23	16.19	16.24	0.29	15.28	17.19	12.52
<b>Recreation and culture</b>											
Aerobics	1 hr class / 3 classes per week	Per Month	320.00	371.00	15.94	320.00	371.00	15.94	-	-	-
CD player	CD Player / Phillips Brand	1 Piece	921.32	961.34	4.34	1087.65	1141.24	4.93	755.00	781.43	3.50
Colour box	Camlin Brand / Medium Size / 12 Colour	1 Box	25.00	29.27	17.07	25.00	29.27	17.07	-	-	-
Colour box	Swan Brand / Small Size / 12 Colour	1 Box	21.20	31.58	48.97	21.20	31.58	48.97	-	-	-
Cosmetic treatment	Cosmetic Treatment / Eye brough	Per time	30.00	50.00	66.67	30.00	50.00	66.67	-	-	-
Glaze paper	Glase PAQer	1 Piece	1.99	2.42	21.58	1.60	2.07	29.14	2.38	2.78	16.49
Haircut-female	Female Hair Cut	Per Person	78.96	88.79	12.45	141.67	161.33	13.88	16.25	16.25	0.00
Haircut-men	Male Hair Cut	Per Person	28.13	36.88	31.11	43.75	60.00	37.14	12.50	13.75	10.00
Moniter book	Exercise Book / 200 Pages	1 Book	13.72	17.14	24.88	13.11	18.56	41.57	14.33	15.71	9.61
Pen	Red leaf Pen	1 Piece	4.92	5.23	6.44	4.67	5.40	15.76	5.17	5.07	-1.97
Pen	Faster Pen	1 Piece	5.08	5.66	11.51	5.00	5.95	19.00	5.16	5.38	4.25
Postage of letter - Asia	Postage of letter to Asian Countries	1 Piece	16.00	18.00	12.50	16.00	18.00	12.50	-	-	-
Recordable CD	Recordable CD / Blank CD	1 Piece	4.43	5.02	13.36	3.75	4.83	28.91	5.10	5.20	1.93
<b>Miscellaneous</b>											
Baby cologne	Baby Cheramy Colone	175 ml	29.86	31.84	6.61	31.35	35.45	13.07	28.38	28.23	-0.52
Baby diapers	Huggies / Small Size	1 Packet	141.71	146.89	3.66	145.30	148.61	2.28	138.11	145.18	5.12
Baby lotion	Johnson & Johnson Baby Lotion	200 MI, bottle	33.00	35.98	9.03	32.64	36.23	10.97	33.35	35.73	7.13
Baby soap	Johnson Baby SoAQ	100 Gram	9.73	10.62	9.19	9.69	11.60	19.66	9.77	9.65	-1.21
Body lotion	Nivea Lotion	200 MI	41.92	41.78	-0.34	45.14	44.44	-1.56	38.70	39.12	1.08
Body lotion	Enchanteaur Lotion	200 MI	32.00	36.72	14.73	30.80	36.09	17.19	33.21	37.34	12.45
Cologne	Splash	200 MI	23.17	25.97	12.09	22.82	23.95	4.98	23.53	27.99	18.99
Cologne	Loviline	175 ml	24.89	26.77	7.54	27.27	26.42	-3.12	22.50	27.11	20.46
Facial cream	Fair & Lovely / Facial Cream	25 Gram	17.84	23.76	33.18	16.28	24.67	51.58	19.40	22.84	17.74
Hair cream	Max	175 ml	30.46	34.76	14.10	30.99	35.30	13.92	29.93	34.21	14.28
Hair cream	Elite	175 ml	30.89	34.38	11.29	33.03	36.06	9.20	28.75	32.69	13.70
Hair cream	Gatsby	175 ml	22.88	23.90	4.43	18.63	22.65	21.57	27.14	25.15	-7.33
Sanitary pads	Riaa	1 Packet	13.93	16.68	19.72	12.25	17.03	39.00	15.61	16.33	4.60
Shampoo	Emerone	200 MI	23.18	26.93	16.16	23.22	25.33	9.11	23.15	28.53	23.24
Shampoo	Head & shoulders	200 MI	36.24	38.76	6.96	38.86	38.96	0.26	33.62	38.56	14.70
Shampoo	Pantene Pro vitamine	200 MI	32.39	37.64	16.20	31.71	39.18	23.59	33.08	36.09	9.12
Soap	Lux Soap	100 Gram	5.00	5.49	9.79	4.88	4.64	-5.04	5.12	6.34	23.95
Toothpaste	Aqua fresh,	50 MI	15.51	16.22	4.56	15.18	15.62	2.89	15.85	16.82	6.15
Toothpaste	Colgate	50 MI	12.53	15.35	22.48	10.29	14.49	40.92	14.78	16.20	9.64

			Consumer Price Index - CPI ( June 2004 =100)																% change in Consumer Price Index - CPI																		
			Total	Total Excluding Fish	Food and beverages including Fish	Food and beverages Excluding Fish	1.1 Fish	2. Tobacco	3. Clothing & footwear	4. Housing, water, electricity, gas & other fuels	Actual rentals for housing	5. Furnishing, household equipments & routine maintenance of	6. Health	7. Transport	8. Communication	9. Recreation & culture	10. Education	11. Hotels, cafes & restaurants	12. Miscellaneous goods & services	13. Religious activity	Total	Total Excluding Fish	Food and beverages Including Fish	Food and beverages Excluding Fish	Fish	Tobacco	Clothing & footwear	Housing, water, electricity, gas & other fuels	Actual rentals for housing	Furnishing, household equipments & routine maintenance of	Health	Transport	Communication	Recreation & culture	Education	Hotels, cafes & restaurants	Miscellaneous goods & services
Weights		100.00	95.44	33.1	28.75	4.56	2.76	5.96	19.48	7.17	5.30	5.42	5.07	5.83	4.94	3.15	0.77	7.92	0.11	100.00	95.44	33.31	28.75	4.56	2.76	5.96	19.48	7.17	5.30	5.42	5.07	5.83	4.94	3.15	0.77	7.92	0.11
2009		132.09	132.12	150.12	152.96	131.51	115.29	112.23	136.55	143.81	134.97	142.90	149.46	65.87	93.99	135.05	141.33	116.65	100.00	3.98	4.98	1.48	3.90	-13.35	-2.09	2.98	7.57	14.29	9.64	2.54	0.47	-0.46	3.52	23.75	2.57	5.99	0.00
2010		140.82	140.83	157.16	160.72	140.70	113.54	114.77	145.73	153.04	143.62	155.76	154.82	65.96	98.73	144.74	145.89	122.48	100.00	6.61	6.59	5.23	5.07	6.98	-1.51	2.26	6.72	6.42	6.41	9.00	3.59	0.14	5.04	7.18	3.23	5.00	0.00
2011		158.89	155.02	188.11	180.70	239.89	145.24	128.41	150.45	161.11	157.15	170.00	175.52	65.98	101.09	167.19	168.68	133.03	100.00	12.83	10.08	19.60	12.43	70.50	27.91	11.89	3.24	5.27	9.42	9.15	13.37	0.02	2.39	15.51	15.62	8.61	0.00
September 2010 to August 2011		150.00	147.85	174.7	171.20	195.09	124.24	120.83	148.57	157.85	149.57	163.10	165.43	66.05	100.12	160.12	153.49	126.88	100.00	15.16	10.84	22.69	11.68	83.55	67.60	17.78	3.30	4.72	18.42	7.52	15.36	-0.58	0.91	14.00	31.61	16.24	0.00
September 2011 to August 2012		172.74	163.88	214.16	191.20	358.08	208.24	142.32	153.48	165.30	177.11	175.37	190.83	65.67	101.03	182.54	202.02	147.49	100.00	7.64	4.00	11.49	2.13	54.11	51.28	12.38	4.44	6.00	18.22	6.29	8.09	-0.67	1.39	13.77	25.18	12.47	0.00
August 2012 / August 2011																			7.64	4.00	11.49	2.13	54.11	51.28	12.38	4.44	6.00	18.22	6.29	8.09	-0.67	1.39	13.77	25.18	12.47	0.00	
2011 Aug		163.27	158.65	197.11	187.83	259.96	146.06	131.30	149.32	160.08	155.45	169.61	179.54	66.09	99.82	167.19	166.11	134.10	100.00	0.21	1.67	-0.52	3.45	-15.31	1.48	0.95	0.63	0.39	1.81	-0.02	0.70	-0.09	0.22	0.00	0.00	1.88	0.00
Sep		165.74	160.45	200.9	189.03	276.37	155.21	133.60	149.63	160.48	158.75	177.07	179.94	66.09	100.81	167.19	179.50	136.82	100.00	1.51	1.13	1.66	0.64	6.31	6.26	1.75	0.21	0.25	2.13	4.40	0.22	0.00	0.99	0.00	8.07	2.03	0.00
October		165.55	163.15	194.15	190.59	215.82	164.52	139.92	150.16	161.65	168.65	177.21	187.63	65.61	102.63	167.19	186.97	142.08	100.00	-0.11	1.68	-3.45	0.83	-21.91	6.00	4.73	0.35	0.73	6.23	0.08	4.27	-0.72	1.80	0.00	4.16	3.84	0.00
Nov		171.90	164.97	210.7	193.25	316.80	162.25	138.69	152.66	162.76	172.51	177.86	188.37	65.61	102.81	167.19	200.81	144.48	100.00	3.83	1.12	8.31	1.40	46.79	-1.38	-0.87	1.67	0.69	2.29	0.37	0.39	0.00	0.18	0.00	7.40	1.69	0.00
Dec		173.53	167.69	210.3	196.53	295.81	224.88	137.90	152.89	163.04	172.00	177.74	189.25	65.61	102.03	167.19	200.81	144.70	100.00	0.95	1.65	-0.02	1.69	-6.63	38.60	-0.57	0.15	0.17	-0.30	-0.07	0.47	0.00	-0.76	0.00	0.00	0.16	0.00
2012 Jan		173.40	163.18	219.16	192.38	387.21	228.71	141.53	153.04	164.20	177.74	172.37	190.86	65.61	99.90	190.21	203.24	147.93	100.00	-0.08	-2.69	4.25	-2.11	30.90	1.70	2.63	0.10	0.71	3.34	-3.02	0.85	0.00	-2.09	13.77	1.21	2.23	0.00
Feb		172.93	163.17	216.14	190.50	377.02	232.05	142.38	153.04	164.79	179.71	172.44	189.33	65.61	100.15	190.21	205.40	151.09	100.00	-0.27	-0.01	-1.38	-0.97	-2.63	1.46	0.60	0.00	0.36	1.11	0.04	-0.80	0.00	0.24	0.00	1.06	2.14	0.00
Mar		174.01	163.13	217.15	188.68	401.67	223.30	143.00	154.20	165.38	181.17	173.92	193.24	65.65	100.28	190.21	207.90	151.67	100.00	0.63	-0.03	0.84	-0.95	6.54	-3.77	0.44	0.76	0.36	0.81	0.86	2.07	0.05	0.13	0.00	1.22	0.38	0.00
Apr		173.78	162.96	217.11	188.19	400.07	220.16	144.00	154.78	167.00	180.98	173.93	193.42	65.65	100.22	190.21	207.92	150.44	100.00	-0.13	-0.10	-0.30	-0.26	-0.40	-1.41	0.70	0.38	0.98	-0.11	0.01	0.09	0.00	-0.06	0.00	0.01	-0.81	0.00
May		169.37	163.58	203.04	189.20	290.37	221.72	145.33	154.38	167.48	183.94	173.93	195.81	65.65	100.34	190.21	207.92	150.55	100.00	-2.54	0.38	-6.52	0.54	-27.42	0.71	0.92	-0.26	0.29	1.64	0.00	1.24	0.00	0.12	0.00	0.00	0.07	0.00
June		177.48	164.11	227.31	190.87	457.34	222.81	146.64	155.35	168.10	183.04	173.81	192.91	65.65	100.81	190.21	207.92	149.38	100.00	4.79	0.32	11.97	0.88	57.50	0.49	0.90	0.62	0.37	-0.48	-0.07	-1.48	0.00	0.46	0.00	0.00	-0.78	0.00
July		179.44	165.17	232.31	193.36	477.86	222.28	147.25	155.70	169.05	183.12	173.90	195.17	65.65	101.12	190.21	207.92	149.93	100.00	1.10	0.65	2.18	1.30	4.49	-0.24	0.42	0.23	0.57	0.04	0.05	1.17	0.00	0.31	0.00	0.00	0.37	0.00
Aug		175.75	165.00	220.41	191.83	400.64	220.96	147.56	155.94	169.69	183.76	180.27	194.07	65.65	101.21	190.21	207.92	150.82	100.00	-2.06	-0.11	-5.12	-0.79	-16.16	-0.59	0.21	0.16	0.38	0.35	3.66	-0.56	0.00	0.09	0.00	0.00	0.59	0.00

# Annex 5: Male' - Consumer Price Index and Inflation rates by Major categories

	Consumer Price Index - CPI ( June 2004 =100)																		% change in CPI / Inflation Rate																	
	Total	Total Excluding Fish	1. Food and beverages Including Fish	Food and beverages Excluding Fish	1.1 Fish	2. Tobacco	3. Clothing & footwear	4. Housing, water, electricity, gas & other fuels	Actual rentals for housing	5. Furnishing, household equipments & routine maintenance of	6. Health	7. Transport	8. Communication	9. Recreation & culture	10. Education	11. Hotels, cafes & restaurants	12. Miscellaneous goods & services	13. Religious activity	Total	Total Excluding Fish	Food and beverages Including Fish	Food and beverages Excluding Fish	Fish	Tobacco	Clothing & footwear	Housing, water, electricity, gas & other fuels	Actual rentals for housing	Furnishing, household equipments & routine maintenance of	Health	Transport	Communication	Recreation & culture	Education	Hotels, cafes & restaurants	Miscellaneous goods & services	Religious activity
Weights	48.90	46.48	13.39	10.97	2.42	0.93	2.45	12.30	7.17	2.85	2.76	2.92	3.84	2.10	1.51	0.77	2.96	0.11	48.90	46.48	13.39	10.97	2.42	0.93	2.45	12.30	7.17	2.85	2.76	2.92	3.84	2.10	1.51	0.77	2.96	0.11
2009	130.21	130.13	151.57	155.95	131.68	111.35	109.30	131.18	143.81	129.43	151.16	153.56	61.32	88.34	150.19	141.33	118.07	100.00	4.53	5.48	0.52	2.93	-10.70	-1.80	3.21	7.82	14.29	10.94	2.25	0.98	-0.75	5.01	35.09	2.57	7.10	0.00
2010	138.21	138.02	162.90	167.54	141.88	110.98	112.54	141.13	153.04	137.17	158.21	158.66	61.46	93.41	164.38	145.89	123.88	100.00	6.15	6.07	7.48	7.43	7.74	-0.33	2.96	7.59	6.42	5.98	4.66	3.32	0.23	5.74	9.44	3.23	4.93	0.00
2011	153.79	150.03	195.36	188.60	226.03	141.21	127.04	145.24	159.87	142.94	174.92	180.47	61.61	91.43	194.52	168.68	133.07	100.00	11.27	8.70	19.93	12.57	59.31	27.24	12.89	2.91	4.46	4.20	10.56	13.74	0.24	-2.13	18.34	15.62	7.42	0.00
Sep 2010 to Aug 2011	146.77	144.57	181.89	180.28	189.15	121.11	118.03	144.33	157.85	138.35	166.55	169.52	61.64	92.15	185.15	153.49	126.78	100.00	15.04	11.43	21.22	10.39	68.04	71.15	24.79	2.72	4.72	17.62	13.33	15.12	-0.62	0.82	16.70	31.61	19.33	0.00
Sep 2011 to Aug 2012	168.85	161.10	220.48	199.01	317.85	207.28	147.29	148.26	165.30	162.73	188.75	195.16	61.26	92.91	216.06	202.02	151.30	100.00	11.61	9.31	11.38	3.73	37.67	60.05	22.84	4.74	6.00	20.97	14.14	6.55	-1.08	7.32	16.62	25.18	15.52	0.00
Aug 2012 / Aug 2011																			11.61	9.31	11.38	3.73	37.67	60.05	22.84	4.74	6.00	20.97	14.14	6.55	-1.08	7.32	16.62	25.18	15.52	0.00
2011 Aug	156.12	150.96	204.53	193.35	255.24	137.71	127.66	144.60	160.08	141.40	172.95	184.90	61.90	87.83	194.52	166.11	135.00	100.00	0.32	1.16	-0.17	2.50	-8.37	-1.18	1.36	0.83	0.39	0.31	0.00	0.71	-0.14	0.01	0.00	0.00	1.69	0.00
Sep	158.15	153.01	206.34	195.20	256.84	143.21	131.88	144.90	160.48	142.60	183.63	185.75	61.90	89.25	194.52	179.50	137.52	100.00	1.30	1.36	0.88	0.96	0.63	4.00	3.31	0.21	0.25	0.85	6.17	0.46	0.00	1.61	0.00	8.07	1.86	0.00
Oct	158.67	156.20	199.64	198.21	206.14	150.56	142.24	145.15	161.65	152.89	183.89	193.64	61.18	92.44	194.52	186.97	143.33	100.00	0.33	2.09	-3.25	1.54	-19.74	5.13	7.85	0.18	0.73	7.22	0.14	4.25	-1.17	3.58	0.00	4.16	4.23	0.00
Nov	164.11	157.80	215.54	200.14	285.37	152.48	142.06	146.62	162.76	156.06	184.90	194.86	61.18	92.55	194.52	200.81	145.75	100.00	3.42	1.02	7.96	0.98	38.44	1.28	-0.13	1.01	0.69	2.07	0.55	0.63	0.00	0.11	0.00	7.40	1.69	0.00
Dec	166.04	160.60	216.41	204.47	270.58	241.17	140.25	146.80	163.04	154.80	184.90	196.50	61.18	92.58	194.52	200.81	146.04	100.00	1.18	1.77	0.40	2.16	-5.18	58.16	-1.27	0.12	0.17	-0.80	0.00	0.84	0.00	0.03	0.00	0.00	0.20	0.00
2012 Jan	170.86	161.93	225.81	200.10	342.43	236.92	145.11	147.05	164.20	161.18	188.14	195.83	61.18	93.24	226.83	203.24	153.35	100.00	2.90	0.83	4.34	-2.14	26.55	-1.76	3.46	0.17	0.71	4.12	1.75	-0.34	0.00	0.72	16.62	1.21	5.00	0.00
Feb	170.35	161.88	221.89	197.37	333.14	237.24	146.76	147.73	164.79	164.91	188.28	192.88	61.18	93.09	226.83	205.40	157.09	100.00	-0.30	-0.03	-1.73	-1.37	-2.71	0.13	1.14	0.47	0.36	2.31	0.07	-1.51	0.00	-0.16	0.00	1.06	2.44	0.00
Mar	171.69	162.36	224.58	196.73	350.93	224.77	148.41	148.85	165.38	167.58	190.82	195.05	61.23	93.30	226.83	207.90	157.04	100.00	0.79	0.30	1.21	-0.32	5.34	-5.26	1.12	0.76	0.36	1.62	1.35	1.13	0.09	0.23	0.00	1.22	-0.03	0.00
Apr	171.54	162.39	223.22	195.87	347.30	220.43	149.96	149.82	167.00	167.49	190.82	195.71	61.23	93.32	226.83	207.92	156.13	100.00	-0.09	0.02	-0.61	-0.44	-1.03	-1.93	1.05	0.65	0.98	-0.05	0.00	0.34	0.00	0.03	0.00	0.01	-0.58	0.00
May	168.20	163.18	209.46	197.26	264.77	220.84	152.44	149.17	167.48	172.94	190.85	198.68	61.23	93.39	226.83	207.92	155.52	100.00	-1.95	0.48	-6.17	0.71	-23.76	0.18	1.66	-0.43	0.29	3.25	0.02	1.52	0.00	0.07	0.00	0.00	-0.39	0.00
June	175.05	163.65	234.21	198.97	394.04	219.61	155.15	150.53	168.10	170.62	190.59	196.92	61.23	93.39	226.83	207.92	153.44	100.00	4.07	0.29	11.82	0.86	48.82	-0.55	1.78	0.91	0.37	-1.34	-0.14	-0.89	0.00	0.01	0.00	0.00	-1.34	0.00
July	177.29	165.11	240.81	203.22	411.30	219.77	156.40	151.08	169.05	170.68	190.76	199.07	61.23	94.07	226.83	207.92	154.43	100.00	1.28	0.89	2.82	2.14	4.38	0.07	0.80	0.37	0.57	0.04	0.09	1.09	0.00	0.72	0.00	0.00	0.65	0.00
Aug	174.23	165.02	227.81	200.57	351.39	220.39	156.82	151.45	169.69	171.05	197.41	197.01	61.23	94.26	226.83	207.92	155.95	100.00	-1.72	-0.06	-5.40	-1.30	-14.57	0.28	0.27	0.25	0.38	0.21	3.48	-1.03	0.00	0.20	0.00	0.00	0.98	0.00

# Annex 6: Atolls - Consumer Price Index and Inflation rates by Major categories

		Consumer Price Index - CPI ( June 2004 =100)															% change in Consumer Price Index - CPI															
		Total	Total Excluding Fish	1. Food and beverages Including Fish	Food and beverages Excluding Fish	1.1 Fish	2. Tobacco	3. Clothing & footwear	4. Housing, water, electricity, gas & other fuels	5. Furnishing, household equipments & routine maintenance of	6. Health	7. Transport	8. Communication	9. Recreation & culture	10. Education	12. Miscellaneous goods & services	Total	Total Excluding Fish	Food and beverages Including Fish	Food and beverages Excluding Fish	Fish	of Tobacco	Clothing & footwear	Housing, water, electricity, gas & other fuels	Furnishing, household equipments & routine maintenance of	Health	Transport	Communication	Recreation & culture	Education	Miscellaneous goods & services	
Weights		51.10	48.96	19.92	17.78	2.14	1.83	3.51	7.18	2.44	2.66	2.14	1.98	2.83	1.63	4.96	51.10	48.96	19.92	17.78	2.14	1.83	3.51	7.18	2.44	2.66	2.14	1.98	2.83	1.63	4.96	
2009		133.89	134.01	148.86	150.97	131.32	117.30	117.21	146.13	143.16	128.84	144.50	74.67	91.70	115.96	115.54	3.48	4.53	2.13	4.52	-16.16	-2.22	5.33	6.89	8.20	3.31	0.33	0.00	-4.51	8.10	5.21	
2010		143.32	143.49	155.11	157.01	139.36	114.76	118.44	154.61	148.89	169.27	150.19	74.67	93.20	119.92	121.37	7.04	7.08	4.20	4.00	6.12	-2.17	1.04	5.81	4.00	31.38	3.94	0.00	1.63	3.41	5.04	
2011		163.76	159.75	185.08	176.60	255.38	147.29	129.68	157.31	160.91	184.97	170.41	74.44	97.92	122.96	132.49	14.27	11.33	19.32	12.48	83.25	28.35	9.49	1.74	8.07	9.27	13.47	-0.31	5.07	2.54	9.16	
September 2010 to August 2011		153.10	150.97	170.10	166.29	201.64	125.85	123.61	156.32	155.23	177.67	161.38	74.59	95.80	121.95	126.55	15.26	10.30	23.74	12.58	100.11	65.86	12.81	3.52	11.95	-12.54	14.94	-0.52	2.75	0.83	14.14	
September 2011 to August 2012		176.46	166.53	210.47	187.21	403.49	208.73	139.45	161.81	173.78	155.39	185.50	74.20	98.43	122.96	144.43																
August 2012 / August 2011																	4.16	-0.58	11.39	0.94	71.97	47.17	5.22	3.84	9.95	-28.51	9.86	0.00	0.60	0.00	10.64	
2011 Aug		170.12	165.95	194.01	185.41	265.29	150.34	134.50	156.89	161.31	191.30	173.22	74.20	98.05	122.96	132.82	0.11	2.11	-0.65	4.19	-21.76	2.77	0.66	0.34	2.08	-0.04	0.69	0.00	0.44	0.00	1.88	
Sep		173.00	167.51	198.43	186.38	298.42	161.34	135.75	157.22	165.51	192.59	172.99	74.20	98.97	122.96	135.77	1.69	0.94	2.28	0.52	12.49	7.32	0.93	0.21	2.60	0.67	-0.14	0.00	0.94	0.00	2.23	
Oct		172.14	169.75	191.18	186.89	226.74	171.66	139.06	158.16	167.25	192.64	180.36	74.20	99.93	122.96	140.58	-0.50	1.34	-3.65	0.28	-24.02	6.40	2.44	0.60	1.05	0.02	4.26	0.00	0.97	0.00	3.54	
Nov		179.36	171.79	207.27	189.79	352.28	167.25	137.14	162.59	170.28	193.04	180.50	74.20	100.09	122.96	142.95	4.19	1.20	8.41	1.55	55.36	-2.57	-1.38	2.80	1.81	0.21	0.08	0.00	0.16	0.00	1.69	
Dec		180.70	174.41	206.56	192.37	324.29	216.56	136.89	162.93	171.21	192.80	180.50	74.20	98.66	122.96	143.05	0.75	1.53	-0.34	1.36	-7.94	29.48	-0.18	0.21	0.55	-0.12	0.00	0.00	-1.43	0.00	0.07	
2012 Jan		175.84	164.38	215.08	188.23	437.76	224.52	139.71	162.75	175.71	136.51	184.82	74.20	97.05	122.96	143.90	-2.69	-5.75	4.12	-2.15	34.99	3.68	2.06	-0.11	2.63	-29.20	2.39	0.00	-1.63	0.00	0.59	
Feb		175.39	164.40	212.98	187.23	426.54	229.40	139.99	161.49	176.41	136.52	184.93	74.20	97.62	122.96	146.73	-0.25	0.02	-0.98	-0.53	-2.56	2.17	0.20	-0.77	0.40	0.01	0.06	0.00	0.59	0.00	1.97	
Mar		176.23	163.85	214.04	184.52	458.95	222.55	139.57	162.65	176.25	136.76	190.85	74.20	97.75	122.96	147.69	0.48	-0.33	0.50	-1.45	7.60	-2.98	-0.30	0.72	-0.09	0.17	3.20	0.00	0.13	0.00	0.65	
Apr		175.92	163.50	214.04	184.44	459.65	220.02	140.40	162.57	175.86	136.78	190.38	74.20	97.56	122.96	146.23	-0.18	-0.22	0.00	-0.04	0.15	-1.14	0.59	-0.05	-0.22	0.01	-0.25	0.00	-0.19	0.00	-0.99	
May		170.48	163.97	199.38	184.93	319.26	222.17	140.92	162.60	175.85	136.75	192.13	74.20	97.73	122.96	146.78	-3.09	0.29	-6.85	0.26	-30.54	0.98	0.37	0.02	-0.01	-0.02	0.92	0.00	0.17	0.00	0.37	
June		179.81	164.54	223.33	186.52	528.79	224.44	141.17	162.93	176.80	136.76	187.89	74.20	98.58	122.96	146.15	5.48	0.35	12.02	0.86	65.63	1.02	0.18	0.20	0.54	0.00	-2.21	0.00	0.87	0.00	-0.43	
July		181.49	165.23	227.27	188.01	552.99	223.57	141.25	162.93	176.83	136.76	190.30	74.20	98.62	122.96	146.43	0.93	0.42	1.76	0.80	4.58	-0.39	0.06	0.00	0.02	0.01	1.28	0.00	0.04	0.00	0.19	
Aug		177.20	164.98	216.11	187.16	456.23	221.25	141.51	162.92	177.36	136.76	190.30	74.20	98.64	122.96	146.94	-2.37	-0.15	-4.91	-0.45	-17.50	-1.04	0.19	-0.01	0.30	0.00	0.00	0.00	0.02	0.00	0.35	