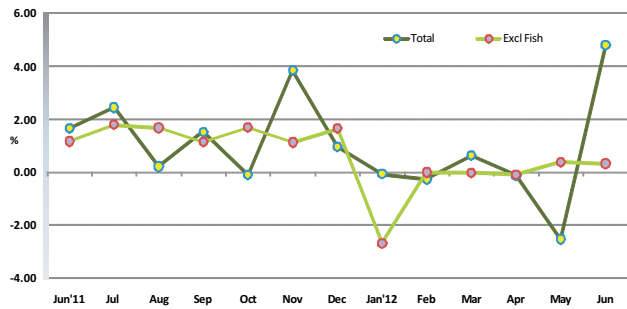


1. Inflation Rate of Nation (Monthly): June 2012 compared to May 2012

To measure month to month inflation, this month's index is compared with the previous month inflation (for e.g: June '12 / May '12). The monthly inflation for June 2012 is 4.79% and 0.32% is the total excluding fish.

Figure 8. Monthly Inflation Rate of Nation (compared to the previous month)

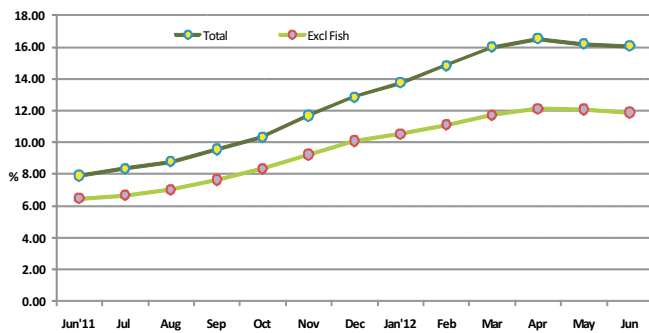


Month	Total	Excl Fish
Jun'11	1.64	1.16
Jul	2.43	1.79
Aug	0.21	1.67
Sep	1.51	1.13
Oct	-0.11	1.68
Nov	3.83	1.12
Dec	0.95	1.65
Jan'12	-0.08	-2.69
Feb	-0.27	-0.01
Mar	0.63	-0.03
Apr	-0.13	-0.10
May	-2.54	0.38
Jun	4.79	0.32

2. Inflation Rate of Nation (Annualized): July '11 to June '12/July '10 to June '11

The annualized inflation rate for any month compares the average for the 12 monthly indices with that of the preceding 12 months (Eg: July '11 to June '12 /July'10 to June '11). This index shows an annual inflation of 16.06%, and the annualized total excluding fish is 11.88%.

Figure 9. Annualized Inflation Rate of Nation (compared to the past 12 month period)

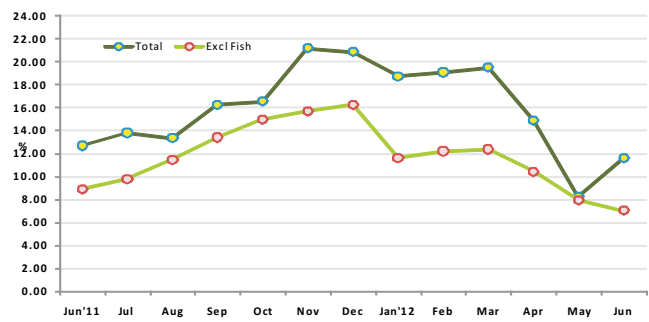


Month	Total	Excl Fish
Jun'11	7.89	6.46
Jul	8.33	6.66
Aug	8.79	7.02
Sep	9.56	7.63
Oct	10.32	8.34
Nov	11.67	9.22
Dec	12.83	10.08
Jan'12	13.75	10.51
Feb	14.83	11.09
Mar	15.99	11.70
Apr	16.53	12.10
May	16.19	12.06
Jun	16.06	11.88

3. Inflation Rate of Nation (month on month): June '12/ June '11

To measure the month on month change at one point in time, the index of the month is compared with that of the same month in the preceding year (Eg: June '12 /June '11). The month on month index for June shows an inflation of 11.59% and the inflation excluding fish is 7.05%.

Figure 10. Month on Month inflation Rate of Nation (compared to the same month of the previous year)



Month	Total	Excl Fish
Jun'11	12.68	8.91
Jul	13.79	9.79
Aug	13.36	11.46
Sep	16.24	13.40
Oct	16.54	14.96
Nov	21.16	15.70
Dec	20.85	16.25
Jan'12	18.73	11.62
Feb	19.07	12.19
Mar	19.49	12.35
Apr	14.87	10.42
May	8.23	7.95
Jun	11.59	7.05

CONSUMER PRICE INDEX - NATION

Department of National Planning
Ministry of Finance and Treasury

June 2012

Consumer Price Index-Nation June 2012

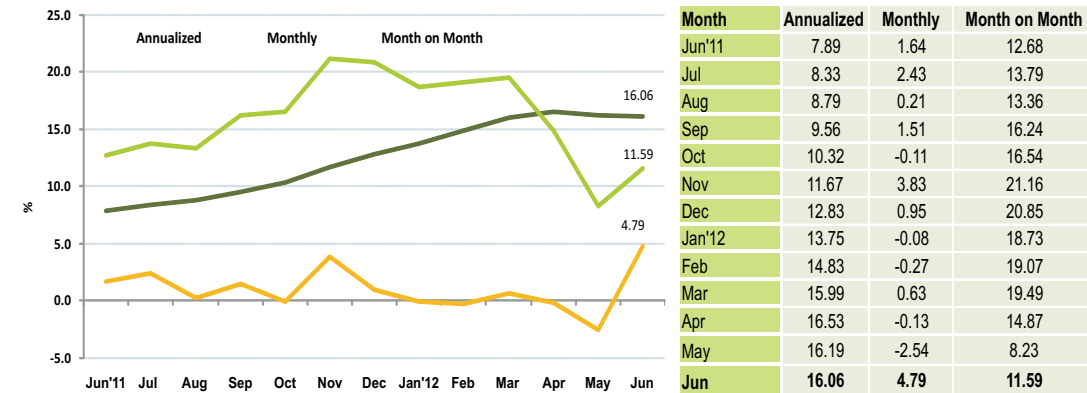
Inflation Rate of Nation

The Consumer Price Index (CPI) for nation rose at an annualized rate of 16.06 percent in June 2012. Fish and tobacco showed the highest inflation followed by hotels, cafes & restaurants categories.

Monthly CPI of June 2012 increased by 4.79 percent compared to May 2012. The inflation was mainly driven from fish category.

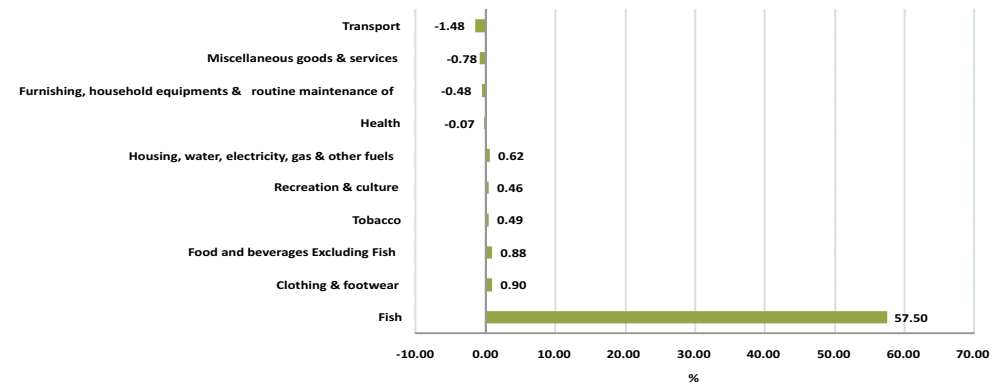
When June 2012 is compared with June 2011, the consumer price index increased by 11.59 percent. Fish category showed the highest inflation followed by tobacco and hotel, cafes & restaurants categories.

Figure 1: Inflation rates of Nation, June-2012



Main contributions to the change in the CPI - Monthly

Figure 2: Inflation by major categories in June CPI - Monthly



Major contributors to the change in the CPI- Monthly basis

Fish category pulled up the national monthly inflation by 57%, whereas transport pulled down the overall monthly inflation by 1.5%. Additionally clothing & footwear and food categories also pulled up the overall monthly inflation.

While increase in the fish category was the major factor contributing to overall monthly inflation, items which contributed most to this were other tuna for which price increased by 85% while price of skipjack tuna and prices of reef fish increased by 74% and 35% respectively.

In transport category, international airfare prices declined by 5% compared to the previous month while domestic airfare prices increased by 2% in June 2012.

As for clothing & footwear category, mens jeans and trousers prices increased by 4% and 3% respectively while women t-shirt prices increased by 2% in June 2012.

1. Inflation Rate of Male' & Atolls (Monthly): compared to previous month

The monthly inflation rate for both Male' and Atolls fluctuated over the past one year period. As seen in figure 3; inflation rate in Male' peak 3 times in last one year. First in Nov 2011 followed by January 2012 and again in Jun 2012. The first two peaks were the results of introduction on GST for selected products in October 2011 and renewal of the GST rate from 3% to 6% in January 2012. The last peak is due to the fact that for ramazan there is high demand for the food items which drives up the price of fish and some other food items. In general, the same trend follows in the Atolls except for July 2011 and Jan 2012.

Figure 3. Monthly Inflation Rate, Male' & Atolls, (compared to the previous month)

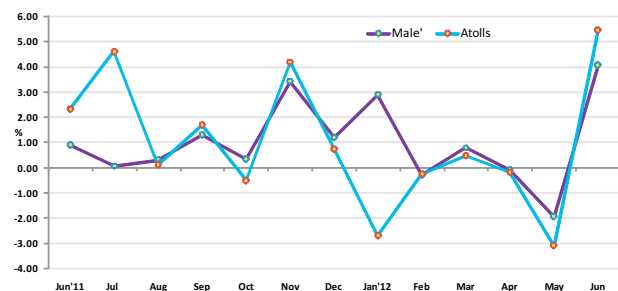


Table 1. Inflation by major categories, National, Male' & Atolls, June 2012 (compared to the previous month)

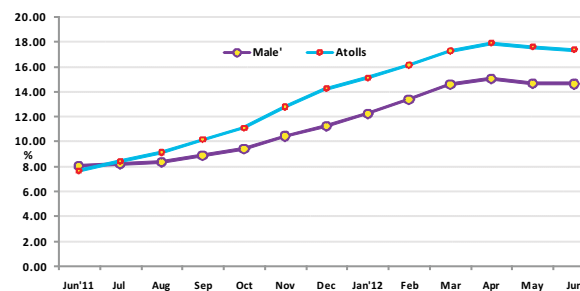
Categories	Monthly inflation- June 2012		
	National	Male'	Atoll
Total	4.79	4.07	5.48
Total Excluding Fish	0.32	0.29	0.35
Food and beverages Excluding Fish	0.88	0.86	0.86
Fish	57.50	48.82	65.63
Tobacco	0.49	-0.55	1.02
Clothing & footwear	0.90	1.78	0.18
Housing, water, electricity, gas & other fuels	0.62	0.91	0.20
Furnishing, household equipments & routine maintenance	-0.48	-1.34	0.54
Health	-0.07	-0.14	0.00
Transport	-1.48	-0.89	-2.21
Recreation & culture	0.46	0.01	0.87
Miscellaneous goods & services	-0.78	-1.34	-0.43

The slight decline in Male' depicted for tobacco was the result of decrease in the price of arecanut while in the Atolls cigarette as well as arecanut prices increased. As for the furnishing in Male' some basic bedding and furniture prices decreased due to the ramazan sale while prices increase in the Atolls for insecticides and some basic bedding items

2. Inflation Rate of Male' & Atolls (Annualized): July '11 to June '12/July '10 to June '11

The annualized inflation rate for Male' and Atolls increased over time with atolls inflation rate being highest at the end of April 2012. The annualized inflation rate for Atolls was higher than that of Male' almost three percentage points in June 2012.

Figure 4: Annualized Inflation Rate, Male' & Atolls (compared to the past 12 month period)



Annualized inflation rate of the nation was 16.06%. Fish showed the highest inflation with 88% followed by tobacco at 64%. The third highest category was hotels, cafes & restaurants which registered 30%.

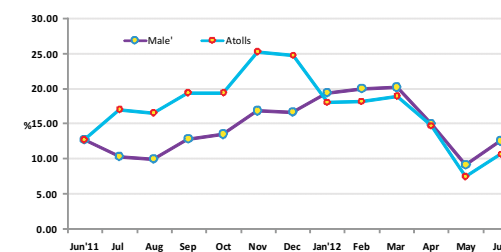
The increase in fish category was due to an increase in the price of other tuna by 214%. Additionally skipjack tuna and reef fish prices went up by 104% and 54% respectively. Smoked fish, dried fish chips and canned tuna fish also increased during this period.

From tobacco category, price of arecanut increased by 80% while cigarette prices also went up to 59%, reflecting the increase in the import duties on cigarette at end of 2011.

As for hotels, cafes & restaurants category, on average prices of breakfast meals went up by 45%. Additionally prices of pizza and restaurant meals went up by 27% and 21% respectively.

3. Inflation Rate of Male' & Atolls (month on month): June '12 / June '11

Figure 6. Month on Month inflation Rate, Male' & Atolls (compared to the same month of the previous year)



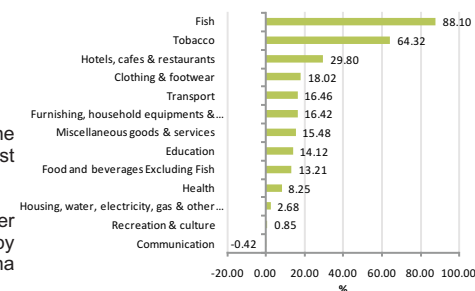
As shown in figure 8, when June 2012 was compared to the same period of previous year, all the categories recorded an inflation with the exception of communication category. Fish showed the highest inflation with 64% followed by tobacco 58% and furnishing, households equipments & routine maintenance which registered 19% inflation.

The items which contributed most to the fish category were other tuna fish for which price rose by 228%. Additionally, skipjack tuna and fish paste prices went up by 76% and 27% respectively. However, reef fish prices decreased by 18% when two points of time were compared.

As for tobacco category, on average cigarette prices increased by 70% due to increase in import duties of tobacco products on 1 December 2011. Additionally arecanut prices went up by 19%, when compared to June 2011.

In June and July 2011 inflation rate in the atolls is seen to be lower than the inflation rate in Male', and rose gradually from July 2011 onwards reaching 17.36% in June 2012 for Atolls while for Male' it stood at 14.66%.

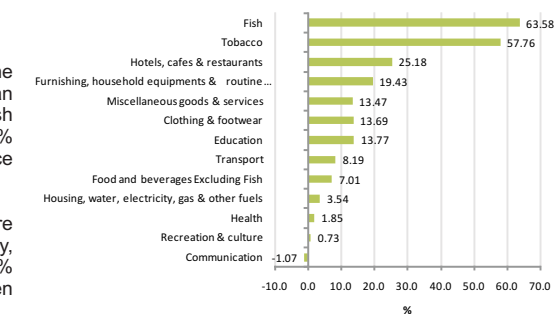
Figure 5: Inflation by major categories in June CPI- Annualized



Inflation rates in the atolls were higher for the period July to December 2011 than that of Male' as seen in figure 6. The change in trend following January 2012 may be attributed to the fact that health related expenses in the atolls is largely covered under the universal health care program, while in Male' the clinics were not.

March 2012 onwards the month on month inflation rates for both Male' and Atolls slowed down and picked up again in June 2012.

Figure 7. Inflation by major categories in May CPI- Month on month



Annex 1: Average monthly Prices of selected Items, CPI National, Male' & Atolls, Jun 2012

Description	Specification	Unit	National - Monthly			Male' - Monthly			Atolls - Monthly		
			Average Price		% Chn	Average Price		% Chn	Average Price		% Chn
			May 2012	Jun 2012	May 2012 / Jun2012	May 2012	Jun 2012	May 2012 / Jun2012	May 2012	Jun 2012	April2012 / Jun2012
Food											
Apollo	Milk Chocó / Wafe	1 Piece	2.28	2.57	12.70	2.28	2.57	12.70	-	-	-
Apple	Apple	1 Piece	5.91	5.63	-4.80	5.84	5.43	-6.97	5.98	5.82	-2.68
Aracanut	Raw Aracanut / Ur	1 kg	100.28	99.41	-0.86	91.46	88.19	-3.58	109.09	110.64	1.42
Baby food - cereal	Promina / Banana	250 Gram / Pa	21.01	21.46	2.13	20.56	21.46	4.36	21.47	21.47	0.00
Baby milk powder	Anface	450 Gram / Tin	172.42	168.20	-2.44	169.83	167.41	-1.43	175.00	169.00	-3.43
Banana	Bonthiraiy	1 Piece	1.89	2.29	21.19	2.47	2.52	1.98	1.31	2.06	57.51
Beans	Fresh Beans	1 kg	51.69	53.19	2.89	53.38	56.38	5.60	50.00	50.00	0.00
Biscuits	Cream Cracker, Kh	200 gram, pack	13.23	12.93	-2.22	13.14	12.84	-2.32	13.31	13.03	-2.12
Bread	Small Bread	1 Piece	12.56	12.50	-0.50	12.54	12.54	0.00	12.58	12.46	-1.00
Bread	Large	1 Piece	19.68	19.90	1.12	23.25	23.25	0.00	16.10	16.55	2.75
Bread spread	Chocolate Crumpy	225 Gram	44.69	46.63	4.35	43.85	43.85	0.00	45.53	49.41	8.54
Butter bun	butter buns / Pack	1 Piece	4.34	4.29	-1.03	4.16	4.16	0.00	4.52	4.43	-1.99
Cabbage	Fresh Cabbage	1 kg	33.28	40.01	20.21	33.23	38.99	17.32	33.33	41.03	23.08
Canned baked beans	Baked Beans / Can	400 Gram	14.51	14.25	-1.82	14.32	14.02	-2.08	14.70	14.47	-1.57
Canned mixed fruits	Canned Mixed Fru	398 Gram	29.05	28.06	-3.43	28.20	24.84	-11.91	29.90	31.27	4.57
Canned pineapple	Canned Pineapple	567 Gram	23.63	23.36	-1.13	23.08	22.67	-1.74	24.19	24.05	-0.56
Carrot	Fresh Carrot	1 kg	29.33	29.18	-0.54	25.34	23.35	-7.83	33.33	35.00	5.00
Chicken sausage	Chicken Sausage /	340 Gram	23.08	22.84	-1.03	20.16	20.19	0.12	26.00	25.50	-1.92
Chilli powder	Chillie Powder / Pa	50 Gram	7.35	7.78	5.83	6.90	6.90	0.00	7.81	8.67	10.97
Cigarette	Marlboro	20 Piece / 1 Pa	38.75	39.29	1.40	38.66	38.66	0.00	38.84	39.92	2.79
Coconut	Medium size / Coc	1 Piece	4.39	4.15	-5.32	4.39	4.15	-5.32	-	-	-
Coke	Dubai coke / Cann	300 Ml	10.86	11.26	3.71	10.95	10.77	-1.72	10.76	11.75	9.24
Condensed milk	Double Peach	397Gram, tin	15.72	15.86	0.89	15.26	15.57	2.02	16.17	16.14	-0.17
Cooking oil	Bemoli Oil	2 Ltr	61.44	62.20	1.24	57.42	59.62	3.83	65.46	64.79	-1.03
Cooking oil	Sun Flower Oil	2 Ltr	96.14	93.29	-2.96	91.51	91.45	-0.07	100.77	95.14	-5.58
Corn flake	Kellogg's / Wheat	: 300 Gram	38.91	40.95	5.24	46.83	46.90	0.17	31.00	35.00	12.90
Curry powder	Curry Powder / An	340 Gram	39.63	41.44	4.56	42.47	41.98	-1.16	36.79	40.90	11.16
Curry powder	Fish curry powder	50 Gram	7.28	7.43	1.99	6.88	6.97	1.30	7.69	7.89	2.60
Curry powder	Chicken curry pow	50 Gram	7.32	7.63	4.20	7.13	7.01	-1.72	7.52	8.26	9.80
Dhal	Yellow Colored Dh	1 kg	49.42	48.14	-2.59	48.39	46.37	-4.17	50.46	49.91	-1.08
Dried Chilli	Dried Chilli (Hikimi	1 kg	88.19	90.08	2.15	92.48	97.92	5.88	83.89	82.24	-1.97
Egg	Chicken egg / Impc	1 Piece	1.68	1.81	7.78	1.55	1.75	12.37	1.80	1.87	3.83
Flour	Ordinary Flour / lo	1 kg	4.36	4.31	-1.01	3.84	3.84	0.00	4.87	4.78	-1.81
Frozen beef	Frozen Beef	1 kg	62.77	61.79	-1.55	70.02	68.07	-2.78	55.52	55.52	0.00
Frozen chicken	Frozen chicken / W	1 kg	54.97	51.59	-6.14	49.99	46.85	-6.27	59.95	56.33	-6.03
Garlic	Garlic	100 Gram	4.59	4.13	-10.04	3.80	3.41	-10.08	5.39	4.85	-10.02
Ginger	Ginger	100 Gram	5.35	4.95	-7.41	3.90	3.62	-7.05	6.80	6.28	-7.61
Githeyo Mirus	Dhivehi mirus	1 Piece	2.76	3.23	17.14	2.62	3.18	21.51	2.91	3.29	13.21
Green chilli	Green Chilli / Impc	100 Gram	20.05	21.18	5.64	8.19	10.45	27.59	31.90	31.90	0.00
Jam	Tova Brand / Bottl	450 Gram	26.07	25.60	-1.81	25.24	24.96	-1.12	26.90	26.24	-2.46
Juice-Foster Clark	Foster Clark / Pow	750 Gram	67.71	67.20	-0.75	66.46	65.48	-1.47	68.97	68.92	-0.07
Juice-Sun quick	Sun quick / Orange	840 Ml	75.42	78.45	4.01	74.98	78.40	4.56	75.87	78.50	3.47
Margarine	Daisy brand tub /	250 Gram	28.13	27.55	-2.06	27.16	26.84	-1.17	29.09	28.25	-2.88
Milk powder	Coast	1800 Gram, tin	256.80	253.10	-1.44	243.87	236.97	-2.83	269.73	269.23	-0.18
Milk powder	Nido	1800 Gram / Ti	270.73	267.33	-1.26	267.86	268.22	0.14	273.60	266.43	-2.62
Milo	Nestle Milo Powde	400 Gram	84.14	83.64	-0.59	86.14	84.89	-1.45	82.14	82.39	0.31
Onion	Imported Onion	1 kg	10.41	11.70	12.45	10.15	12.42	22.34	10.67	10.99	3.03
Orange	Fresh Orange	1 Piece	4.91	5.03	2.52	4.64	4.39	-5.58	5.18	5.68	9.79
Potato	Imported Potato	1 kg	12.72	13.56	6.58	12.47	12.56	0.65	12.96	14.56	12.28
Sauce	Tomato Sauce / lifi	320 Gram / Bo	14.47	14.32	-1.07	15.60	15.65	0.35	13.34	12.98	-2.73
Sauce	Chillie & Garlic Sau	320 Gram / Bo	15.71	15.89	1.17	17.11	17.47	2.13	14.31	14.31	0.02
Tea leaves-loose	Ceylon Tea Leaves	1 kg	49.13	47.66	-3.00	47.12	46.67	-0.95	51.15	48.65	-4.89
Tea leaves-tea bag	Melesna / 100 tea	200 Gram	37.80	36.91	-2.34	44.93	43.16	-3.93	30.67	30.67	0.00
Tea leaves-tea bag	Akbar / 100 tea ba	200 Gram	36.92	36.63	-0.77	35.42	35.25	-0.48	38.42	38.02	-1.04
Tomato	Fresh Tomato	1Kg	26.15	34.87	33.32	31.98	40.75	27.41	20.32	28.98	42.62
Tomato paste	Tomato Paste / Sn	70 Gram	3.07	3.05	-0.79	3.01	3.07	2.02	3.13	3.02	-3.48
Fish											
Canned fish in brine	Felivaru Canned Fi	185 Gram	17.59	18.14	3.12	17.29	17.63	1.93	17.90	18.66	4.27
Canned fish in oil	Felivaru canned fis	185 Gram	18.93	19.21	1.49	18.22	18.68	2.49	19.63	19.74	0.56
Dried fish chips	Pre packed Dried f	100 Gram	12.73	11.93	-6.24	12.73	11.93	-6.24	-	-	-
Other tuna	Other Tuna / Latti	1 kg	61.82	114.55	85.30	61.82	114.55	85.30	-	-	-

Description	Specification	Unit	National - Monthly			Male' - Monthly			Atolls - Monthly		
			Average Price		% Chn	Average Price		% Chn	Average Price		% Chn
			May 2012	Jun 2012	May 2012 / Jun2012	May 2012	Jun 2012	May 2012 / Jun2012	May 2012	Jun 2012	April2012 / Jun2012
Reef fish	Reef Fish / Maaniy	1 kg	21.56	29.19	35.39	21.56	29.19	35.39	-	-	-
Skipjack tuna	Godha / Kalhubilar	1 kg	61.97	108.00	74.28	61.97	108.00	74.28	-	-	-
Smoked fish	Smoked Fish (Valh)	1 kg	141.18	149.01	5.54	132.36	148.01	11.82	150.00	150.00	0.00
Clothing and Footwear											
Men's jeans	Mend's Jeans / Mc	1 Piece	263.52	273.14	3.65	295.43	309.93	4.91	231.61	236.35	2.04
Men's shirt	Men T-Shirt / Mos	1 Piece	211.76	214.41	1.25	233.20	238.50	2.27	190.32	190.32	0.00
Men's trousers	Men's Trousers / L	1 Piece	240.81	248.24	3.09	229.60	245.33	6.85	252.03	251.15	-0.35
Sport shoes	Diadora / Indoor	1 Pair	396.73	401.04	1.09	357.08	365.70	2.41	436.38	436.38	0.00
Women's sandals	Casual (home-wea	1 Piece	181.80	174.72	-3.90	219.73	205.57	-6.45	143.87	143.87	0.00
Women's t-shirt	Ladies T - shirt / M	1 Piece	169.14	173.24	2.42	191.03	199.13	4.24	147.25	147.35	0.06
Furnishing											
Bed sheet	Single Bed sheet	1 Piece	73.31	73.37	0.08	63.85	62.97	-1.39	82.76	83.77	1.22
Bedroom set	1 Queen size bed	1 Set	9487.00	7894.00	-16.79	9487.00	7894.00	-16.79	-	-	-
Fan	Electric fan (Ceiling	1 Piece	533.63	497.24	-6.82	514.51	441.74	-14.14	552.74	552.74	0.00
Glasses	Plain Glass / Medi	1 Piece	8.21	8.18	-0.39	7.62	7.13	-6.43	8.81	9.23	4.84
Light tube	Fluorescent tube /	1 Piece	15.26	16.16	5.85	15.97	17.75	11.17	14.56	14.57	0.03
Sofa Set	Sofa set / Plywo	1 Piece	7521.00	6938.00	-7.75	8427.00	7261.00	-13.84	6615.00	6615.00	0.00
Washing power	B 29 Brand Washir	1 Kg	28.08	28.41	1.20	23.78	24.33	2.29	32.37	32.50	0.40
Health											
Diegen	Diegen / 200 ml	1 Bottle	36.19	35.65	-1.48	39.29	38.33	-2.43	33.09	32.97	-0.36
Panadol	Panadol / 500 mg	1 Tablet	0.48	0.45	-5.55	0.50	0.49	-2.67	0.45	0.41	-8.74
Vicks balm	Vicks Balm / 19 Gr	1 Bottle	14.07	14.39	2.22	14.83	14.83	0.00	13.31	13.94	4.69
Transport											
International airfare	Male'/Colombo/m	Per Person	5498.93	5211.31	-5.23	5498.93	5211.31	-5.23	-	-	-
Petrol	Petrol	1 Ltr	16.64	16.71	0.43	16.52	16.24	-1.72	16.76	17.19	2.54
Miscellaneous											
Baby cologne	Johnson & Johnson	175 ml	24.58	24.22	-1.47	22.82	21.99	-3.64	26.33	26.44	0.42
Baby lotion	Johnson & Johnson	200 MI, bottle	36.23	35.75	-1.33	36.03	36.12	0.25	36.44	35.39	-2.89
Baby soap	Johnson Baby Soap	100 Gram	10.14	10.76	6.12	10.68	11.87	11.17	9.60	9.65	0.50
Body lotion	Nivea Lotion	200 MI	41.59	41.40	-0.47	44.69	43.72	-2.18	38.49	39.07	1.51
Body lotion	Enchanteaur Lotio	200 MI	37.16	36.58	-1.57	36.52	35.84	-1.86	37.80	37.31	-1.28
Cologne	Loviline	175 ml	26.76	26.21	-2.06	27.06	26.11	-3.53	26.46	26.31	-0.57
Facial cream	Fair & Lovely / Fac	25 Gram	22.46	21.96	-2.20	23.64	21.62	-8.54	21.27	22.30	4.84
Hair cream	Max	175 ml	34.29	34.09	-0.58	35.02	35.02	0.00	33.56	33.16	-1.19
Hair cream	Elite	175 ml	34.63	34.40	-0.66	36.57	36.11	-1.24	32.69	32.69	0.00
Hair cream	Gatsby	175 ml	24.02	23.65	-1.54	22.81	22.07	-3.24	25.24	25.24	0.00
Hair oil	Bertolli	100 MI,bottle	26.95	26.54	-1.51	25.65	25.06	-2.29	28.25	28.02	-0.80
Sanitary pads	Stay Free	1 Packet	15.40	15.63	1.48	16.28	16.66	2.35	14.52	14.59	0.50
Shampoo	Emerone	200 MI	26.94	26.61	-1.25	25.77	25.33	-1.68	28.12	27.88	-0.85
Toothpaste	Colgate	50 MI	14.90	14.99	0.58	14.37	14.11	-1.82	15.44	15.87	2.82

Annex 2: Average annual Prices of of selected Items, CPI National, Male' & Atolls, Jun2012

Description	Specification	Unit	National - Annualized			Male' - Annualized			Atolls - Annualized		
			Average 12 monthly price			Average 12 monthly price			Average 12 monthly price		
			July 2010-Jun 2011	July 2011-Jun 2012	% Chn	July 2010-Jun 2011	July 2011-Jun 2012	% Chn	July 2010-Jun 2011	July 2011-Jun 2012	% Chn
Food											
Apollo	Milk Cócó / Wafer cream	1 Piece	1.44	2.10	45.87	1.44	2.10	45.87	-	-	-
Aracanut	Raw Aracanut / Uncut / Loose	1 kg	57.72	103.64	79.55	55.42	100.17	80.75	60.03	107.12	78.45
Baby food - cereal	Nestum / Wheat & Honey	250 Gram / Tin	38.77	47.07	21.40	38.67	47.86	23.74	38.87	46.28	19.07
Baby food - cereal	Promina / Banana	250 Gram / Packet	17.72	20.44	15.32	17.03	20.00	17.47	18.41	20.87	13.33
Baby milk powder	Lactogen	450 Gram, tin	67.98	74.81	10.05	64.99	72.66	11.80	70.97	76.96	8.44
Baby milk powder	Anflace	450 Gram / Tin	132.41	170.54	28.79	133.33	169.35	27.02	131.50	171.72	30.59
Baby milk powder	S.M.A / Progress	450 Gram / Tin	113.81	125.65	10.41	110.80	122.82	10.85	116.81	128.47	9.98
Beans	Fresh Beans	1 kg	57.05	60.69	6.38	51.19	56.39	10.16	62.92	65.00	3.31
Biscuits	Cream Cracker, Khong Guan	200 gram, packet	9.89	12.74	28.85	9.62	12.61	31.11	10.16	12.87	26.70
Biscuits	Marie Biscuit	400 Gram	17.14	22.05	28.62	15.94	21.12	32.53	18.35	22.98	25.23
Bread	Small Bread	1 Piece	10.25	12.21	19.15	10.77	12.45	15.55	9.72	11.97	23.14
Bread	Large	1 Piece	17.72	19.44	9.73	21.03	23.23	10.43	14.40	15.66	8.71
Bread spread	Chocolate Crumpy	225 Gram	37.68	41.50	10.12	36.41	39.46	8.36	38.95	43.54	11.77
Bun	Small Buns/ Un packed	1 Piece	0.80	0.77	-2.75	0.47	0.56	18.11	1.12	0.99	-11.52
Butter bun	butter buns / Packed	1 Piece	3.30	4.39	32.91	3.62	4.09	12.92	2.98	4.68	57.22
Cabbage	Fresh Cabbage	1 kg	31.14	34.35	10.33	28.50	31.37	10.07	33.77	37.34	10.56
Candy	Solano	1 Piece / 25 Gram	0.39	0.43	10.52	0.44	0.42	-3.91	0.34	0.44	28.86
Canned baked beans	Baked Beans / Canned	400 Gram	11.55	14.04	21.51	11.30	13.75	21.64	11.80	14.33	21.39
Canned mixed fruits	Canned Mixed Fruit / Small	398 Gram	26.37	29.75	12.82	26.84	29.07	8.32	25.90	30.43	17.49
Canned pineapple	Canned Pineapple	567 Gram	15.67	23.12	47.53	15.44	22.47	45.50	15.90	23.77	49.51
Chicken drumsticks	Chicken drumstick	1 kg	53.48	73.09	36.68	53.48	73.09	36.68	-	-	-
Chicken sausage	Chicken Sausage / Packed	340 Gram	20.89	23.09	10.53	17.78	21.39	20.29	24.00	24.79	3.30
Chilli powder	Chillie Powder / Packed Locally	50 Gram	5.47	7.27	32.93	5.21	6.66	27.89	5.74	7.89	37.50
Cigarette	Marlboro	20 Piece / 1 Pack	20.13	32.57	61.81	20.06	32.76	63.34	20.20	32.38	60.29
Cigarette	Benson	20 Piece / 1 Pack	19.41	30.15	55.35	19.25	32.76	70.16	19.56	27.54	40.78
Coconut	Medium size / Coconut	1 Piece	6.87	5.06	-26.32	6.87	5.06	-26.32	-	-	-
Coffee	Nescafe, Cafe' soluble coffee / Canned	50 Gram	32.00	40.56	26.75	32.05	40.80	27.30	31.94	40.31	26.21
Coke	Dubai coke / Canned	300 MI	7.61	10.69	40.41	7.41	10.63	43.37	7.82	10.76	37.60
Coke	Coca Cola / Large Bottle	1500 MI	25.16	30.76	22.26	24.76	29.48	19.05	25.56	32.05	25.37
Condensed milk	Double Peach	397Gram, tin	12.07	15.58	29.01	11.75	15.18	29.18	12.40	15.98	28.85
Condensed milk	Cow Bell	397 Gram / Tin	11.60	15.03	29.52	11.08	15.00	35.37	12.13	15.06	24.18
Cooking oil	Bemoli Oil	2 Ltr	52.07	67.11	28.87	51.39	63.94	24.41	52.76	70.29	33.22
Cooking oil	Sun Flower Oil	2 Ltr	78.54	99.49	26.68	75.45	101.28	34.23	81.62	97.71	19.70
Corn flake	Kellogg's / Wheat and Honey	300 Gram	43.86	37.45	-14.62	42.72	43.39	1.58	45.00	31.50	-30.00
Cucumber	Fresh Cucumber	1 kg	25.20	24.74	-1.82	29.19	30.73	5.28	21.21	18.75	-11.59
Curry powder	Curry Powder / Antelope brand / Canned	340 Gram	28.91	39.95	38.19	31.11	40.84	31.27	26.71	39.06	46.26
Curry powder	Fish curry powder / Packed locally	50 Gram	5.41	7.08	30.94	5.22	6.69	28.08	5.60	7.48	33.61
Curry powder	Chicken curry powder / Packed locally	50 Gram	5.36	7.10	32.47	5.21	6.79	30.41	5.51	7.41	34.41
Dairy milk	Dutch Lady / Milk Pack / Small	250 MI	7.42	9.99	34.65	7.34	9.64	31.34	7.50	10.35	37.87
Dhal	Yellow Colored Dhal	1 kg	45.04	49.24	9.31	44.65	47.57	6.53	45.43	50.90	12.05
Dried Chilli	Dried Chilli (Hikimirus) / Loose	1 kg	56.67	84.16	48.50	54.15	86.02	58.86	59.19	82.29	39.02
Egg	Chicken egg / Imported	1 Piece	1.59	1.83	15.29	1.54	1.74	13.03	1.64	1.92	17.42
Frozen beef	Frozen Beef	1 kg	55.61	65.46	17.71	49.87	67.50	35.37	61.35	63.42	5.73
Frozen chicken	Frozen chicken / Whole chicken / Pre pack	1 kg	43.30	57.81	33.49	39.97	54.73	36.91	46.63	60.89	30.57
Garlic	Garlic	100 Gram	7.47	5.27	-29.47	7.51	3.98	-47.02	7.43	6.56	-11.73
Ginger	Ginger	100 Gram	6.45	5.53	-14.18	5.63	4.02	-28.57	7.26	7.04	-3.01
Githeyo Mirus	Dhivehi mirus	1 Piece	2.93	2.94	0.22	3.14	2.79	-10.93	2.72	3.08	13.07
Green chilli	Green Chilli / Imported	100 Gram	11.76	16.46	39.91	9.50	7.75	-18.43	14.02	25.16	79.46
Jam	Tova Brand / Bottle	450 Gram	22.28	24.85	11.53	22.46	24.51	9.17	22.11	25.19	13.93
Juice-Foster Clark	Foster Clark / Powdered Juice / Bottled	750 Gram	55.90	65.83	17.77	55.66	65.20	17.13	56.14	66.47	18.40
Juice-Sun quick	Sun quick / Orange Juice / Bottled	840 MI	58.88	72.19	22.61	57.52	71.76	24.76	60.24	72.62	20.56
lemon	Imported lemon	1 Piece	1.96	2.16	10.21	1.88	2.13	13.32	2.03	2.18	7.31
Margarine	Daisy brand tub / Small	250 Gram	20.84	26.26	25.98	21.13	26.07	23.38	20.56	26.45	28.65
Milk powder	Coast	1800 Gram, tin	209.17	261.87	25.19	206.77	252.56	22.14	211.58	271.18	28.17
Milk powder	Anchor Milk	1800 Gram / Tin	214.09	252.16	17.78	213.89	275.21	28.67	214.30	229.10	6.91
Milk powder	Nido	1800 Gram / Tin	202.69	263.48	29.99	203.48	266.80	31.12	201.90	260.15	28.85
Milo	Nestle Milo Powder / Canned	400 Gram	55.86	79.53	42.38	56.83	82.00	44.30	54.89	77.06	40.39
Noodles	Mamee Noodles / Packet	85 Gram	3.80	4.56	19.92	3.60	4.16	15.44	4.00	4.95	23.95
Onion	Imported Onion	1 kg	20.84	15.57	-25.29	19.07	14.39	-24.53	22.61	16.75	-25.93
Orange	Fresh Orange	1 Piece	4.28	4.42	3.34	4.08	3.84	-5.81	4.47	5.00	11.69
Salt	Fine Salt / Packed	500 Gram	4.88	5.36	9.85	4.67	5.14	10.08	5.09	5.58	9.63
Sauce	Tomato Sauce / life Brand	320 Gram / Bottled	10.62	13.19	24.16	10.32	13.71	32.85	10.92	12.66	15.94
Sauce	Chillie Sauce / life Brand	335 Gram / Bottled	11.39	14.32	25.74	11.51	15.34	33.33	11.27	13.30	18.00
Sauce	Chillie & Garlic Sauce / life Brand	320 Gram / Bottled	12.29	15.14	23.21	12.55	16.16	28.76	12.03	14.13	17.42
Sweet short-eats	Foni folhi	1 Piece	1.91	2.25	17.78	2.00	2.27	13.63	1.82	2.23	22.34
Tea leaves-loose	Ceylon Tea Leaves (loose)	1 kg	48.36	50.77	4.98	42.29	47.74	12.89	54.44	53.81	-1.16
Tea leaves-tea bag	Today's Taste / 100 tea bag	200 Gram	25.51	33.52	31.42	25.79	33.66	30.53	25.23	33.39	32.33
Tea leaves-tea bag	Melesna / 100 tea bag	200 Gram	26.30	35.89	36.46	27.08	40.44	49.33	25.52	31.33	22.80
Tea leaves-tea bag	Akbar / 100 tea bag	200 Gram	25.64	35.78	39.53	25.96	35.00	34.81	25.32	36.56	44.37

Description	Specification	Unit	National - Annualized			Male' - Annualized			Atolls - Annualized		
			Average 12 monthly price			Average 12 monthly price			Average 12 monthly price		
			July 2010-Jun 2011	July 2011-Jun 2012	% Chn	July 2010-Jun 2011	July 2011-Jun 2012	% Chn	July 2010-Jun 2011	July 2011-Jun 2012	% Chn
Tomato	Fresh Tomato	1Kg	31.25	34.03	8.89	30.94	34.25	10.70	31.57	33.82	7.12
Tomato paste	Tomato Paste / Small can	70 Gram	2.71	3.00	10.67	2.49	2.87	15.17	2.93	3.13	6.85
Fish											
Canned fish in brine	Felivaru Canned Fish / Chunk in Brine	185 Gram	14.42	17.25	19.61	14.49	17.12	18.16	14.35	17.38	21.09
Canned fish in oil	Felivaru canned fish / Chunk in Oil	185 Gram	16.31	18.82	15.42	16.03	18.28	14.04	16.59	19.37	16.76
Dried fish chips	Pre packed Dried fish chips	100 Gram	10.51	13.82	31.51	10.51	13.82	31.51	-	-	-
Other tuna	Other Tuna / Latti	1 kg	24.33	76.36	213.85	24.33	76.36	213.85	-	-	-
Reef fish	Reef Fish / Maaniya mas	1 kg	21.48	33.05	53.86	21.48	33.05	53.86	-	-	-
Skipjack tuna	Godha / Kalhubilamas	1 kg	35.98	73.29	103.68	35.98	73.29	103.68	-	-	-
Smoked fish	Smoked Fish (Valhoamas) / Loose	1 kg	84.84	124.92	47.25	68.84	129.83	88.61	100.83	120.00	19.01
Clothing and Footwear											
Dress material	Most often sold material / Plane / Faatufu 1 Muh		24.85	31.21	25.57	25.29	33.89	34.02	24.42	28.52	16.81
Men's jeans	Mend's Jeans / Most Sold Material	1 Piece	219.45	256.61	16.93	224.26	280.23	24.96	214.65	232.99	8.54
Men's sandals	Most recently sold brand	1 Pair	208.92	233.56	11.79	150.83	190.21	26.10	267.00	276.90	3.71
Men's shirt	Men T-Shirt / Most Sold material	1 Piece	166.31	202.33	21.66	171.11	210.90	23.25	161.50	193.76	19.97
Men's shoes	Office Shoes	1 Pair	255.97	339.60	32.67	255.97	339.60	32.67	-	-	-
Men's trousers	Men's Trousers / Long	1 Piece	203.38	229.53	12.86	188.47	226.45	20.15	218.28	232.62	6.57
Men's t-shirt	Men Shirt / Most Sold Brand	1 Piece	156.09	189.14	21.17	159.58	178.19	11.66	152.60	200.09	31.12
School shoes	School Shoes/ Girl / Most recently sold	1 Pair	149.51	175.27	17.23	139.86	181.15	29.52	159.16	169.40	6.44
School uniform	School Uniform / Boys / Medium size 14	1 Piece	60.15	118.70	97.33	65.50	118.77	81.33	54.80	118.62	116.45
Sport shoes	Diadora / Indoor tennis shoes / Men	1 Pair	334.81	381.67	14.00	272.50	335.26	23.03	397.11	428.07	7.80
Tailoring national dress	National dress / Unstrech Material	1 Piece	117.79	127.32	8.09	140.00	148.33	5.95	95.57	106.30	11.22
Tailoring women's blouse	Sewing of blouse	1 Piece	63.13	73.56	16.53	70.63	75.00	6.19	55.64	72.13	29.64
Women's jeans	Women's Jeans / Fade	1 Piece	188.80	203.61	7.84	203.47	217.08	6.69	174.13	190.13	9.19
Women's sandals	Casual (home-wear)	1 Piece	133.85	164.89	23.20	137.50	184.11	33.90	130.19	145.67	11.89
Women's t-shirt	Ladies T - shirt / Most sold Brand	1 Piece	147.92	168.30	13.78	154.44	190.37	23.26	141.39	146.22	3.42
Housing											
Cement	Cement bag	50 kg	90.19	113.59	25.94	82.33	106.72	29.62	98.05	120.46	22.85
Cooking gas	Cooking gas / Excluding Transport cost	13 Kg	283.19	337.03	19.01	311.67	385.00	23.53	254.72	289.06	13.48
Kerosene oil	Kerosene oil	1 Ltr	12.77	16.60	29.96	11.92	16.42	37.79	13.63	16.78	23.11
Paint	Wall Paint	5 liter	210.66	160.81	-23.66	171.25	187.64	9.57	250.06	133.97	-46.43
Plywood	3 mm	1 Piece	114.26	127.04	11.19	114.99	140.87	22.51	113.53	113.21	-0.28
Roofing sheet	0.6 mm / 1 feet	1 Piece	23.73	29.43	24.02	26.23	27.91	6.42	21.24	30.95	45.76
Furnishing											
Battery	"D" Size Battery / 555 Brand	1 Piece	3.15	3.69	17.19	3.00	3.55	18.44	3.29	3.82	16.05
Battery	"D" Size Battery / Eveready Brand	1 Piece	4.97	6.36	27.89	-	-	-	4.97	6.36	27.89
Bed sheet	Single Bed sheet / Ordinary brand	1 Piece	63.30	67.63	6.83	41.52	50.77	22.28	85.09	84.49	-0.70
Bedroom set	1 Queen size bed / dressing table / cup board	Set	6258.33	9368.58	49.70	6258.33	9368.58	49.70	-	-	-
Chair	Plastic Chair / large / without handle	1 Piece	129.23	172.86	33.76	130.00	146.66	12.82	128.46	199.06	54.95
Fan	Electric fan (Ceiling) / Usha Brand / 43 inch	1 Piece	461.88	514.81	11.43	453.23	496.96	9.65	470.74	532.66	13.15
Insecticides	Insecticides / Mosfly Brand / Small Bottle	400 Ml	34.34	43.16	25.67	32.88	41.82	27.19	35.80	44.50	24.28
Iron	Electric Iron / Phillip brand / 1000 V	1 Piece	252.69	304.03	20.32	231.67	256.56	10.75	273.72	351.50	28.42
Linoleum	Aadhaige Tharafaalu (linoleum)	1 Feet	9.28	13.41	44.40	8.85	15.40	74.03	9.72	11.42	17.43
Mattress	Single / kurlon or Temptation	1 Piece	2205.29	2649.47	20.14	2414.38	3363.94	39.33	1996.20	1935.00	-3.07
Refrigerator	Forest free Refrigerator / 50 kg/ Hitachi brand	1 Piece	4698.16	5897.71	25.53	4372.75	6013.27	37.52	5023.56	5782.16	15.10
Single bed	Single bed / With fancy Plywood	1 Piece	1733.15	1919.53	10.75	1607.29	2039.06	26.86	1859.00	1800.00	-3.17
Sofa Set	Sofa set / Plywood with sponge cushions	1 Piece	6068.40	7312.51	20.50	5489.58	8010.02	45.91	6647.22	6615.00	-0.48
Washing power	Soklin Brand Washing powder Pack	1 Kg	26.79	29.26	9.22	22.13	22.45	1.46	31.46	36.08	14.68
Washing power	B 29 Brand Washing powder Pack	1 Kg	22.03	26.46	20.12	18.95	22.51	18.74	25.10	30.42	21.16
Water pump	Pedroller Water Pump / 1 inches	1 Piece	2574.17	2953.30	14.73	2815.39	3477.99	23.54	2332.96	2428.61	4.10
Health											
Chest x-ray	Chest x-ray	Per test	70.56	103.12	46.15	111.17	149.17	34.18	29.95	57.07	90.57
Diagen	Diagen / 200 ml	1 Bottle	24.91	33.54	34.66	26.46	36.90	39.46	23.35	30.18	29.23
Doctor's consulting fee-general	consultation fee / General Doctor	Per Patient	86.72	95.31	9.91	81.25	90.63	11.54	92.19	100.00	8.47
Doctor's consulting fee-special	Doctor consultation fee / Specialist	Per Patient	130.21	152.50	17.12	127.92	172.50	34.85	132.50	132.50	0.00
Forcevel	Forcevel / 500 mg	1 Tablet	3.17	3.64	14.86	3.50	3.96	13.13	2.84	3.32	16.99
Helibo orange	Helibo Orange / 200 ml	1 Bottle	37.57	49.83	32.63	42.82	57.00	33.13	32.32	42.65	31.97
Panadol	Panadol / 500 mg	1 Tablet	0.42	0.47	10.54	0.50	0.50	0.49	0.34	0.43	25.09
Vicks balm	Vicks Balm / 19 Gram	1 Bottle	10.44	13.01	24.66	10.78	13.61	26.29	10.10	12.41	22.92
Vitamin C	Vitamin C / 500 mg	1 Tablet	0.86	0.85	-1.01	0.79	0.99	25.61	0.93	0.71	-23.76
Transport											
Cleaning of motorcycle	Full cycle	Per vehicle	70.00	80.25	14.65	70.00	80.25	14.65	-	-	-
Domestic airfare	Male'/Gan/Male'	Per Person / Adult	2885.33	3326.05	15.27	2885.33	3326.05	15.27	-	-	-
Domestic airfare	Male'/Hanmadhoo/Male'	Per Person / Adult	2243.67	2598.10	15.80	2243.67	2598.10	15.80	-	-	-
Domestic airfare	Male'/Kade'dhoo/ Male'	Per Person / Adult	2564.50	2982.75	16.31	2564.50	2982.75	16.31	-	-	-
Domestic airfare	Male'/Kah'dhoo/male'	Per Person / Adult	2243.67	2598.10	15.80	2243.67	2598.10	15.80	-	-	-
International airfare	Male'/Colombo/male'	Per Person	4181.41	5273.21	26.11	4181.41	5273.21	26.11	-	-	-
Motor cycle tyre	Back Tyre	1 Piece	332.22	702.08	111.33	332.22	702.08	111.33	-	-	-
Motor cycle tyre	Front tyre	1 Piece	323.00	618.30	91.42	323.00	618.30	91.42	-	-	-
Motorcycle	Honda Wave 125 I	1 Piece	44814.08	54915.77	22.54	45816.67	54704.50	19.40	43811.50	55127.05	25.83
Motorcycle	Honda Wave 125 H	1 Piece	41427.78	49320.47	19.05	40583.33	48228.67	18.84	42272.22	50412.28	19.26
Motorcycle	Honda Wave 125 R	1 Piece	40500.00	48228.67	19.08	-	-	-	40500.00	48228.67	19.08

Description	Specification	Unit	National - Annualized			Male' - Annualized			Atolls - Annualized		
			Average 12 monthly price			Average 12 monthly price			Average 12 monthly price		
			July 2010-Jun 2011	July 2011-Jun 2012	% Chn	July 2010-Jun 2011	July 2011-Jun 2012	% Chn	July 2010-Jun 2011	July 2011-Jun 2012	% Chn
Petrol	Petrol	1 Ltr	12.50	16.22	29.81	12.43	16.01	28.87	12.57	16.43	30.74
Taxi fare	Taxi Fare	Per trip	20.83	22.45	7.75	20.00	20.00	0.00	21.67	24.90	14.90
Hotels, cafes and restaurants											
Meals	4 roshi / 1fish curry / 1 black tea / 1 dhufur	Per person	17.17	23.21	35.22	17.17	23.21	35.22	-	-	-
Meals	4 roshi / 1 chicken curry / 1 black tea / 1 dh	Per person	24.33	37.69	54.91	24.33	37.69	54.91	-	-	-
Pizza	Tuna Mushroom	whole pizza	67.22	85.21	26.75	67.22	85.21	26.75	-	-	-
Restaurant meals	Fish & Chips	1 plate	47.65	57.50	20.68	47.65	57.50	20.68	-	-	-
Restaurant meals	Nasi Goreng	1 plate	51.44	62.81	22.09	51.44	62.81	22.09	-	-	-
Miscellaneous											
Baby cologne	Baby Cheramy Cologne	175 ml	23.09	31.04	34.41	22.41	33.50	49.49	23.78	28.58	20.20
Baby cologne	Johnson & Johnson Cologne	175 ml	21.56	24.05	11.55	20.69	22.08	6.69	22.44	26.03	16.02
Baby diapers	Huggies / Small Size	1 Packet	127.90	145.71	13.93	128.66	145.46	13.06	127.14	145.96	14.81
Baby lotion	Johnson & Johnson Baby Lotion	200 MI, bottle	29.89	34.96	16.95	30.19	34.78	15.20	29.59	35.13	18.72
Baby soap	Johnson Baby Soap	100 Gram	9.31	10.10	8.43	8.52	10.36	21.60	10.11	9.83	-2.68
Body lotion	Nivea Lotion	200 MI	39.49	42.14	6.73	41.80	45.73	9.40	37.17	38.55	3.72
Body lotion	Enchanteaur Lotion	200 MI	32.20	35.33	9.74	31.33	34.44	9.92	33.06	36.22	9.56
Cologne	Splash	200 MI	20.23	25.17	24.41	19.56	24.16	23.53	20.90	26.18	25.24
Cologne	Loviline	175 ml	20.91	26.15	25.07	21.22	27.59	30.01	20.60	24.71	19.97
Cosmetic treatment	Cosmetic Treatment / Eye brought	Per time	30.00	40.08	33.61	30.00	40.08	33.61	-	-	-
Facial cream	Fair & Lovely / Facial Cream	25 Gram	17.18	20.62	20.03	16.24	20.42	25.77	18.12	20.81	14.88
Hair cream	Max	175 ml	26.96	32.89	21.98	27.02	33.61	24.37	26.90	32.17	19.58
Hair cream	Elite	175 ml	26.14	33.19	26.97	26.17	35.28	34.80	26.10	31.10	19.12
Haircut-female	Female Hair Cut	Per Person	71.58	84.16	17.58	127.08	152.08	19.67	16.08	16.25	1.08
Haircut-men	Male Hair Cut	Per Person	22.10	34.65	56.77	33.37	54.60	63.63	10.83	14.70	35.65
Sanitary pads	Stay Free	1 Packet	13.00	14.97	15.16	13.07	15.14	15.79	12.92	14.79	14.53
Sanitary pads	Riaa	1 Packet	16.69	14.87	-10.92	17.48	13.65	-21.89	15.91	16.09	1.12
Shampoo	Emerone	200 MI	18.78	25.56	36.10	17.53	24.83	41.60	20.03	26.30	31.29
Shampoo	Head & shoulders	200 MI	32.08	38.49	19.98	31.80	39.78	25.09	32.37	37.21	14.95
Shampoo	Pantene Pro vitamin	200 MI	30.83	35.34	14.64	29.33	35.13	19.76	32.32	35.55	9.99
Soap	Lux Soap	100 Gram	4.81	5.70	18.50	4.64	5.89	27.11	4.99	5.51	10.50
Toothpaste	Aqua fresh,	50 MI	15.05	15.94	5.91	14.57	15.47	6.15	15.53	16.42	5.68
Toothpaste	Colgate	50 MI	12.42	13.79	10.99	11.86	12.77	7.64	12.99	14.81	14.06

Annex 3: Average month on month prices of of selected Items, CPI National, Male' & Atolls, Jun 2012

Description	Specification	Unit	National - Month on Month			Male' - Month on Month			Atolls - Month on Month		
			Average Price			Average Price			Average Price		
			Jun-11	Jun-12	% Chn	Jun-11	Jun-12	% Chn	Jun-11	Jun-12	% Chn
Food											
Biscuits	Cream Cracker, Khong Guan	200 gram, packet	11.36	12.93	13.80	11.33	12.84	13.27	11.40	13.03	14.33
Biscuits	Marie Biscuit	400 Gram	18.49	23.11	24.97	17.58	21.72	23.53	19.40	24.50	26.28
Bread	Small Bread	1 Piece	11.49	12.50	8.78	12.32	12.54	1.77	10.66	12.46	16.88
Bread spread	Chocolate Crumpy	225 Gram	38.25	46.63	21.93	36.25	43.85	20.97	40.24	49.41	22.79
Rice-Basmati	Basmati Rice / Pre Packed	1 kg	26.44	29.18	10.38	25.00	28.95	15.79	27.87	29.41	5.52
Chicken drumsticks	Chicken drumstick	1 kg	61.26	67.23	9.74	61.26	67.23	9.74	-	-	-
Frozen beef	Frozen Beef	1 kg	61.15	61.79	1.06	57.29	68.07	18.82	65.00	55.52	-14.59
Baby food - cereal	Nestum / Wheat & Honey	250 Gram / Tin	45.00	49.78	10.63	46.83	49.50	5.71	43.18	50.07	15.96
Baby food - cereal	Promina / Banana	250 Gram / Packet	18.48	21.46	16.15	18.48	21.46	16.14	18.48	21.47	16.15
Baby milk powder	Lactogen	450 Gram, tin	70.28	75.86	7.94	67.07	73.55	9.67	73.48	78.16	6.37
Milk powder	Coast	1800 Gram, tin	232.92	253.10	8.66	229.80	236.97	3.12	236.04	269.23	14.06
Milk powder	Anchor Milk	1800 Gram / Tin	234.04	260.84	11.45	248.42	280.48	12.91	219.67	241.19	9.80
Milk powder	Nido	1800 Gram / Tin	231.89	267.33	15.28	242.50	268.22	10.61	221.29	266.43	20.40
Condensed milk	Double Peach	397Gram, tin	13.44	15.86	17.98	13.08	15.57	19.08	13.80	16.14	16.94
Condensed milk	Cow Bell	397 Gram / Tin	13.11	15.58	18.86	12.60	15.20	20.62	13.62	15.97	17.24
Dairy milk	Dutch Lady / Milk Pack / Small	250 MI	8.91	10.22	14.73	9.09	9.79	7.65	8.72	10.65	22.11
Marjerine	Daisy brand tub / Small	250 Gram	24.33	27.55	13.22	23.75	26.84	13.01	24.91	28.25	13.42
Cooking oil	Bemoli Oil	2 Ltr	68.28	62.20	-8.90	68.89	59.62	-13.46	67.67	64.79	-4.25
Cooking oil	Sun Flower Oil	2 Ltr	87.49	93.29	6.63	95.22	91.45	-3.96	79.77	95.14	19.27
Banana	Bonthiraiy	1 Piece	1.74	2.29	31.66	2.15	2.52	17.43	1.33	2.06	54.58
Canned mixed fruits	Canned Mixed Fruit / Small	398 Gram	29.93	28.06	-6.26	31.20	24.84	-20.38	28.66	31.27	9.12
Canned pine Apple	Canned Pine AApple	567 Gram	16.23	23.36	43.91	15.86	22.67	42.99	16.61	24.05	44.79
Coconut	Medium size / Coconut	1 Piece	6.65	4.15	-37.56	6.65	4.15	-37.56	-	-	-
lemon	Imported lemon	1 Piece	2.03	2.19	8.09	1.88	2.27	20.49	2.17	2.11	-2.70
Green chilli	Green Chilli / Imported	100 Gram	12.70	21.18	66.75	7.07	10.45	47.91	18.33	31.90	74.01
Githeyo Mirus	Dhivehi mirus	1 Piece	2.43	3.23	32.98	2.59	3.18	22.64	2.27	3.29	44.76
Mixed fresh vegetables	Mixed Vegetables	1 kg	39.77	41.94	5.47	38.63	43.27	12.02	40.90	40.60	-0.72
Tomato	Fresh Tomato	1Kg	34.03	34.87	2.47	31.38	40.75	29.84	36.67	28.98	-20.95
Cucumber	Fresh Cucumber	1 kg	23.70	28.71	21.15	30.23	34.02	12.52	17.17	23.41	36.34
Carrot	Fresh Carrot	1 kg	32.19	29.18	-9.37	24.38	23.35	-4.23	40.00	35.00	-12.50
Cabbage	Fresh Cabbage	1 kg	29.35	40.01	36.33	23.69	38.99	64.56	35.00	41.03	17.22
Beans	Fresh Beans	1 kg	59.31	53.19	-10.32	53.62	56.38	5.15	65.00	50.00	-23.08
Garlic	Garlic	100 Gram	8.50	4.13	-51.37	6.66	3.41	-48.77	10.34	4.85	-53.05
Ginger	Ginger	100 Gram	6.28	4.95	-21.16	4.61	3.62	-21.33	7.96	6.28	-21.06
Canned baked beans	Baked Beans / Canned	400 Gram	12.58	14.25	13.23	12.63	14.02	11.09	12.54	14.47	15.39
Canned green peas	Green peas / Processed peas / Canned	440 Gram	8.31	10.83	30.28	8.63	11.66	35.17	8.00	10.00	25.00
Salt	Fine Salt / Packed	500 Gram	4.87	5.36	10.18	4.69	5.22	11.34	5.05	5.51	9.10
Curry powder	Curry Powder / Antelope brand / Canne	340 Gram	33.53	41.44	23.60	34.05	41.98	23.28	33.00	40.90	23.92
Curry powder	Fish curry powder / Packed locally	50 Gram	6.07	7.43	22.48	5.91	6.97	17.93	6.22	7.89	26.80
Curry powder	Chicken curry powder / Packed locally	50 Gram	6.03	7.63	26.62	5.95	7.01	17.68	6.10	8.26	35.34
Dried Chilli	Dried Chilli (Hikimirus) / Loose	1 kg	60.42	90.08	49.09	60.00	97.92	63.20	60.83	82.24	35.18
Chilli powder	Chillie Powder / Packed Locally	50 Gram	6.07	7.78	28.21	6.00	6.90	15.00	6.14	8.67	41.11
Onion	Imported Onion	1 kg	15.97	11.70	-26.74	11.79	12.42	5.34	20.16	10.99	-45.49
Tea leaves-tea bag	Today's Taste / 100 tea bag	200 Gram	29.72	34.69	16.74	30.55	34.27	12.20	28.89	35.12	21.55
Tea leaves-tea bag	Melesna / 100 tea bag	200 Gram	31.92	36.91	15.66	32.33	43.16	33.49	31.50	30.67	-2.65
Tea leaves-tea bag	Akbar / 100 tea bag	200 Gram	31.09	36.63	17.82	31.80	35.25	10.85	30.39	38.02	25.11
Tea leaves-loose	Cylon Tea Leaves (loose)	1 kg	49.19	47.66	-3.11	42.50	46.67	9.80	55.88	48.65	-12.93
Coffee	Nescafe, Cafe' soluble coffee / Canned	50 Gram	36.61	42.15	15.13	38.55	41.62	7.98	34.68	42.68	23.07
Juice-Sunquick	Sunquick / Orange Juice / Bottled	840 MI	64.16	78.45	22.27	63.58	78.40	23.30	64.74	78.50	21.26
Juice-FosterClark	FosterClark / Powdered Juice / Bottled	750 Gram	61.04	67.20	10.09	61.70	65.48	6.13	60.38	68.92	14.14
Milo	Nestle Milo Powder / Canned	400 Gram	66.78	83.64	25.25	70.25	84.89	20.84	63.31	82.39	30.14
Apollo	Milk choco / Wafer cream	1 Piece	1.79	2.57	44.14	1.79	2.57	44.14	-	-	-
Candy	Solano	1 Piece / 25 Gram	0.38	0.39	0.58	0.36	0.32	-12.09	0.40	0.45	12.02
Coke	Dubai coke / Canned	300 MI	9.25	11.26	21.71	9.01	10.77	19.45	9.49	11.75	23.86
Coke	Coka Cola / Large Bottle	1500 MI	27.93	31.04	11.14	27.91	30.27	8.46	27.94	31.80	13.81
Aracanut	Raw Aracanut / Uncut / Loose	1 kg	83.23	99.41	19.44	86.25	88.19	2.25	80.21	110.64	37.93
Cigarette	Marlboro	20 Piece / 1 Pack	22.58	39.29	73.99	22.33	38.66	73.09	22.83	39.92	74.86
Cigarette	Benson	20 Piece / 1 Pack	21.36	35.46	65.98	22.33	38.66	73.09	20.39	32.25	58.19
Sweet short-eats	Foni folhi	1 Piece	2.11	2.35	11.47	2.00	2.37	18.67	2.22	2.33	5.00
Jam	Tova Brand / Bottle	450 Gram	22.54	25.60	13.59	22.70	24.96	9.95	22.38	26.24	17.28
Tomato paste	Tomato Paste / Small can	70 Gram	2.81	3.05	8.52	2.64	3.07	16.59	2.98	3.02	1.37
Sauce	Tomato Sauce / life Brand	320 Gram / Bottled	11.20	14.32	27.78	11.09	15.65	41.14	11.31	12.98	14.69
Sauce	Chillie Sauce / life Brand	335 Gram / Bottled	12.54	15.38	22.70	12.95	16.63	28.45	12.12	14.13	16.55
Sauce	Chillie & Garlic Sauce / life Brand	320 Gram / Bottled	13.29	15.89	19.59	14.13	17.47	23.67	12.45	14.31	14.95
Fish											
Canned fish in oil	Felivaru canned fish / Chunk in Oil	185 Gram	17.69	19.21	8.60	17.39	18.68	7.40	17.98	19.74	9.77
Canned fish in brine	Felivaru Canned Fish / Chunk in Brine	185 Gram	15.57	18.14	16.57	15.91	17.63	10.77	15.22	18.66	22.62
Dried fish chips	Pre packed Dried fish chips	100 Gram	10.67	11.93	11.86	10.67	11.93	11.86	-	-	-
Fish paste	Fasmeeru Rihaakuru / Bottled	450 Gram	28.00	35.57	27.04	28.00	35.57	27.04	-	-	-

Description	Specification	Unit	National - Month on Month			Male' - Month on Month			Atolls - Month on Month		
			Average Price			Average Price			Average Price		
			Jun-11	Jun-12	% Chn	Jun-11	Jun-12	% Chn	Jun-11	Jun-12	% Chn
Smoked fish	Smoked Fish (Valhoamas) / Loose	1 kg	122.16	149.01	21.98	114.32	148.01	29.47	130.00	150.00	15.38
Skipjack tuna	Godha / Kalhubilamas	1 kg	61.41	108.00	75.87	61.41	108.00	75.87	-	-	-
Other tuna	Other Tuna / Latti	1 kg	34.90	114.55	228.22	34.90	114.55	228.22	-	-	-
Reef fish	Reef Fish / Maaniya mas	1 kg	35.39	29.19	-17.52	35.39	29.19	-17.52	-	-	-
Clothing and Footwear											
Mens t-shirt	Men Shirt / Most Sold Brand	1 Piece	175.31	204.94	16.90	175.00	198.80	13.60	175.63	211.08	20.19
Mens shirt	Men T-Shirt / Most Sold material	1 Piece	193.13	214.41	11.02	182.50	238.50	30.68	203.75	190.32	-6.59
School uniform	School Uniform / Boys / Medium size 1 1/2	1 Piece	106.25	121.90	14.73	102.50	121.90	18.93	110.00	121.90	10.82
Mens trousers	Men's Trousers / Long	1 Piece	221.46	248.24	12.09	220.00	245.33	11.52	222.92	251.15	12.67
Mens jeans	Mend's Jeans / Most Sold Material	1 Piece	231.16	273.14	18.16	241.06	309.93	28.57	221.25	236.35	6.82
Womens jeans	Women's Jeans / Fade	1 Piece	191.46	214.69	12.13	201.67	227.67	12.89	181.25	201.71	11.29
Womens t-shirt	Ladies T - shirt / Most sold Brand	1 Piece	154.58	173.24	12.07	166.67	199.13	19.48	142.50	147.35	3.40
Dress material	Most often sold material / Plane / Faat 1	1 Muh	26.99	34.27	26.98	27.47	39.04	42.09	26.50	29.50	11.32
Dress material	Most often sold material / Design / Faat 1	1 Muh	32.17	33.33	3.63	40.00	38.00	-5.00	24.33	28.67	17.81
School shoes	School Shoes/ Girl / Most recently sold	1 Pair	152.92	182.75	19.51	151.67	188.67	24.40	154.17	176.83	14.70
Sport shoes	Diadora / Indoor tennis shoes / Men	1 Pair	350.94	401.04	14.28	272.50	365.70	34.20	429.38	436.38	1.63
Nylon faivaan	Size 10	1 Pair	14.31	14.87	3.97	12.90	14.10	9.33	15.71	15.64	-0.44
Men's sandals	Most recently sold brand	1 Pair	212.36	242.20	14.05	161.67	200.33	23.92	263.06	284.08	7.99
Women's sandals	Casual (home-wear)	1 Piece	133.13	174.72	31.24	130.00	205.57	58.13	136.25	143.87	5.59
Housing											
Kerosine oil	Kerosine oil	1 Ltr	13.89	17.10	23.13	12.00	16.56	38.00	15.78	17.64	11.82
Cooking gas	Cooking gas / Excluding Transport cost	13 Kg	325.00	340.63	4.81	390.00	390.00	0.00	260.00	291.25	12.02
Cement	Cement bag	50 kg	104.75	122.30	16.75	97.00	122.00	25.77	112.50	122.60	8.98
Plywood	3 mm	1 Piece	119.17	140.71	18.08	126.67	167.59	32.30	111.67	113.83	1.94
Paint	Wall Paint	5 litre	152.50	167.76	10.01	175.00	198.53	13.44	130.00	137.00	5.38
Roofing sheet	0.6 mm / 1 feet	1 Piece	24.75	32.95	33.14	28.00	30.24	8.00	21.50	35.67	65.89
Furnishing											
Single bed	Single bed / With fancy Plywood	1 Piece	1725.00	2092.50	21.30	1650.00	2385.00	44.55	1800.00	1800.00	0.00
Mattress	Single / kurlon or Temptation	1 Piece	2317.50	2677.50	15.53	2700.00	3420.00	26.67	1935.00	1935.00	0.00
Chair	Plastic Chair / large / without handle	1 Piece	147.08	196.54	33.62	130.00	175.00	34.62	164.17	218.08	32.84
Sofa Set	Sofa set / Plywood with sponge cushions	1 Piece	5813.33	6938.00	19.35	4950.00	7261.00	46.69	6676.67	6615.00	-0.92
Linolium	Aadhaige Tharafaalu (linolium)	1 Feet	9.25	14.22	53.68	8.50	16.43	93.29	10.00	12.00	20.00
Bedsheet	Single Bed sheet / Odinary brand	1 Piece	63.79	73.37	15.01	40.30	62.97	56.25	87.29	83.77	-4.03
Refrigerator	Forest free Refrigerator / 50 kg/ Hitach	1 Piece	4778.25	6905.18	44.51	4432.00	7546.31	70.27	5124.50	6264.05	22.24
Stove	2 Sided gas stove / Hitachi brand	1 Piece	477.19	501.78	5.15	450.00	507.93	12.87	504.38	495.63	-1.73
Iron	Electric Iron / Phillip brand / 1000 V	1 Piece	283.61	304.67	7.42	250.00	258.75	3.50	317.22	350.58	10.52
Fan	Electric fan (Ceiling) / Usha Brand / 43 in	1 Piece	475.83	497.24	4.50	470.00	441.74	-6.01	481.67	552.74	14.76
Water pump	Pedroller Water Pump / 1 inches	1 Piece	2585.92	3160.79	22.23	2950.00	3933.00	33.32	2221.83	2388.58	7.50
Battery	"D" Size Battery / 555 Brand	1 Piece	3.28	3.82	16.69	3.00	3.72	23.89	3.55	3.93	10.61
Washing power	Soklin Brand Washing powder Pack	1 Kg	26.21	30.89	17.84	20.00	23.76	18.78	32.42	38.02	17.27
Washing power	B 29 Brand Washing powder Pack	1 Kg	22.47	28.41	26.45	19.17	24.33	26.93	25.78	32.50	26.09
Insecticides	Insecticides / Mosfly Brand / Small Bott	400 ML	37.93	44.64	17.67	36.33	43.46	19.62	39.53	45.81	15.88
Health											
Panadol	Panadol / 500 mg	1 Tablet	0.43	0.45	3.98	0.50	0.49	-2.67	0.36	0.41	13.13
Forcevel	Forcevel / 500 mg	1 Tablet	3.19	3.74	17.28	3.50	4.00	14.29	2.88	3.48	20.93
Vicks balm	Vicks Balm / 19 Gram	1 Bottle	10.50	14.39	37.01	11.00	14.83	34.85	10.00	13.94	39.38
Helibo orange	Helibo Orange / 200 ml	1 Bottle	40.88	53.24	30.26	48.00	58.33	21.53	33.75	48.16	42.68
Diegen	Diegen / 200 ml	1 Bottle	24.85	35.65	43.45	25.00	38.33	53.33	24.71	32.97	33.45
Vitamin C	Vitamin C / 500 mg	1 Tablet	1.37	0.91	-33.43	1.00	1.00	0.00	1.74	0.83	-52.63
Doctor's consulting fee-general consultation fee / General Doctor		Per Patient	90.63	100.00	10.34	81.25	100.00	23.08	100.00	100.00	0.00
Doctor's consulting fee-specialist Doctor consultation fee / Specialist		Per Patient	141.25	162.08	14.75	150.00	191.67	27.78	132.50	132.50	0.00
Dental service (ordinary filling)	Dental Service / Ordinary Filling	Per Patient	108.33	312.50	188.46	216.67	300.00	38.46	-	-	-
Chest x-ray	Chest x-ray	Per test	85.73	88.50	3.23	128.33	175.00	36.36	43.13	2.00	-95.36
Transport											
Cleaning of motorcycle	Full cycle	Per vehicle	70.00	82.50	17.86	70.00	82.50	17.86	-	-	-
Petrol	Petrol	1 Ltr	15.73	16.71	6.23	16.19	16.24	0.29	15.28	17.19	12.52
Domestic airfare	Male'/Kade'dhoo/ Male'	Per Person / Adult	2856.00	3264.00	14.29	2856.00	3264.00	14.29	-	-	-
Postage of letter - Asia	Postage of letter to Asian Countries	1 Piece	16.00	18.00	12.50	16.00	18.00	12.50	-	-	-
Hotels, cafes and restaurants											
Meals	4 roshi / 1 fish curry / 1 black tea / 1 dh. Per person		18.00	23.32	29.56	18.00	23.32	29.56	-	-	-
Meals	4 roshi / 1 chickencurry / 1 black tea / 1 Per person		39.00	39.00	0.00	39.00	39.00	0.00	-	-	-
Pizza	Tuna Mushroom whole pizza		78.33	90.03	14.94	78.33	90.03	14.94	-	-	-
Restaurant meals	Fish & Chips	1 plate	50.00	62.87	25.73	50.00	62.87	25.73	-	-	-
Restaurant meals	Nasi Goreng	1 plate	55.00	66.67	21.21	55.00	66.67	21.21	-	-	-
Miscellaneous											
Cosmetic treatment	Cosmetic Treatment / Eye brough	Per time	30.00	50.00	66.67	30.00	50.00	66.67	-	-	-
Haircut-female	Female Hair Cut	Per Person	78.96	88.79	12.45	141.67	161.33	13.88	16.25	16.25	0.00
Haircut-men	Male Hair Cut	Per Person	28.13	36.88	31.11	43.75	60.00	37.14	12.50	13.75	10.00
Sanitary pads	Stay Free	1 Packet	14.21	15.63	9.94	13.80	16.66	20.74	14.63	14.59	-0.25
Soap	Lux Soap	100 Gram	4.91	6.37	29.77	4.72	6.90	46.18	5.10	5.84	14.57
Baby soap	Johnson Baby SoAQ	100 Gram	9.66	10.76	11.38	9.57	11.87	24.03	9.75	9.65	-1.03

Description	Specification	Unit	National - Month on Month			Male' - Month on Month			Atolls - Month on Month		
			Average Price			Average Price			Average Price		
			Jun-11	Jun-12	% Chn	Jun-11	Jun-12	% Chn	Jun-11	Jun-12	% Chn
Facial cream	Fair & Lovely / Facial Cream	25 Gram	17.40	21.96	26.25	15.67	21.62	38.01	19.13	22.30	16.62
Baby lotion	Johnson & Johnson Baby Lotion	200 ML, bottle	32.03	35.75	11.62	32.10	36.12	12.53	31.97	35.39	10.70
Body lotion	Enchanteaur Lotion	200 ML	31.95	36.58	14.47	30.57	35.84	17.23	33.33	37.31	11.93
Cologne	Splash	200 ML	21.59	26.33	21.99	20.72	24.58	18.63	22.45	28.08	25.09
Cologne	Loviline	175 ml	22.30	26.21	17.53	24.26	26.11	7.60	20.33	26.31	29.38
Hair cream	Max	175 ml	29.62	34.09	15.11	30.43	35.02	15.10	28.80	33.16	15.11
Hair cream	Elite	175 ml	30.63	34.40	12.33	32.50	36.11	11.12	28.75	32.69	13.70
Hair cream	Gatsby	175 ml	21.69	23.65	9.05	18.75	22.07	17.68	24.63	25.24	2.48
Shampoo	Emerone	200 ML	21.65	26.61	22.87	21.50	25.33	17.83	21.81	27.88	27.84
Shampoo	Head & shoulders	200 ML	33.63	38.41	14.19	34.39	38.13	10.88	32.88	38.69	17.66
Shampoo	Pantene Pro vitamine	200 ML	31.14	36.85	18.33	29.16	36.32	24.57	33.13	37.38	12.84
Toothpaste	Colgate	50 ML	12.24	14.99	22.49	11.33	14.11	24.51	13.14	15.87	20.75

Annex 4: National - Consumer Price Index and Inflation rates by Major categories

	Consumer Price Index - CPI (June 2004 =100)																	% change in Consumer Price Index - CPI																			
	Total	Total Excluding Fish	1. Food and beverages Including Fish	Food and beverages Excluding Fish	1.1 Fish	2. Tobacco	3. Clothing & footwear	4. Housing, water, electricity, gas & other fuels	Actual rentals for housing	5. Furnishing, household equipments & routine maintenance of	6. Health	7. Transport	8. Communication	9. Recreation & culture	10. Education	11. Hotels, cafes & restaurants	12. Miscellaneous goods & services	13. Religious activity	Total	Total Excluding Fish	Food and beverages Including Fish	Food and beverages Excluding Fish	Fish	Tobacco	Clothing & footwear	Housing, water, electricity, gas & other fuels	Actual rentals for housing	Furnishing, household equipments & routine maintenance of	Health	Transport	Communication	Recreation & culture	Education	Hotels, cafes & restaurants	Miscellaneous goods & services	Religious activity	
Weights	100.00	95.44	33.31	28.75	4.56	2.76	5.96	19.48	7.17	5.30	5.42	5.07	5.83	4.94	3.15	0.77	7.92	0.11	100.00	95.44	33.31	28.75	4.56	2.76	5.96	19.48	7.17	5.30	5.42	5.07	5.83	4.94	3.15	0.77	7.92	0.11	
2009	132.09	132.12	150.02	152.96	131.51	115.29	112.23	136.55	143.81	134.97	142.90	149.46	65.87	93.99	135.05	141.33	116.65	100.00	3.98	4.98	1.48	3.90	-13.35	-2.09	2.98	7.57	14.29	9.64	2.54	0.47	-0.46	3.52	23.75	2.57	5.99	0.00	
2010	140.82	140.83	157.86	160.72	140.70	113.54	114.77	145.73	153.04	143.62	155.76	154.82	65.96	98.73	144.74	145.89	122.48	100.00	6.61	6.59	5.23	5.07	6.98	-1.51	2.26	6.72	6.42	6.41	9.00	3.59	0.14	5.04	7.18	3.23	5.00	0.00	
2011	158.89	155.02	188.81	180.70	239.89	145.24	128.41	150.45	161.11	157.15	170.00	175.52	65.98	101.09	167.19	168.68	133.03	100.00	12.83	10.08	19.60	12.43	70.50	27.91	11.89	3.24	5.27	9.42	9.15	13.37	0.02	2.39	15.51	15.62	8.61	0.00	
July 2010 to June 2011	146.76	145.33	168.94	167.73	176.57	118.95	118.16	148.25	156.81	147.93	160.86	161.62	66.03	99.93	156.59	150.26	125.19	100.00	16.06	11.88	23.93	13.21	88.10	64.32	18.08	2.75	4.39	16.42	8.25	16.46	-0.42	0.85	14.12	29.80	15.48	0.00	
July 2011 to June 2012	170.32	162.59	209.36	189.88	332.12	195.47	139.53	152.32	163.70	172.22	174.13	188.22	65.75	100.78	178.70	195.05	144.57	100.00																			
June 2012 / June 2011																			11.59	7.05	18.28	7.01	63.58	57.76	13.69	3.54	5.50	19.43	1.85	8.19	-1.07	0.73	13.77	25.18	13.47	0.00	
2011 June	159.06	153.30	192.22	178.36	279.58	141.23	128.98	150.04	159.34	153.27	170.66	178.30	66.36	100.08	167.19	166.11	131.64	100.00	1.64	1.16	2.01	0.73	7.51	9.18	2.08	0.23	0.25	0.26	-0.29	0.16	0.00	0.10	0.00	2.22	1.88	0.00	
July	162.93	156.05	198.73	181.56	306.97	143.93	130.06	148.38	159.46	152.69	169.64	178.30	66.15	99.61	167.19	166.11	131.62	100.00	2.43	1.79	3.39	1.79	9.80	1.92	0.84	-1.11	0.08	-0.38	-0.60	0.00	-0.32	-0.47	0.00	0.00	-0.02	0.00	
Aug	163.27	158.65	197.71	187.83	259.96	146.06	131.30	149.32	160.08	155.45	169.61	179.54	66.09	99.82	167.19	166.11	134.10	100.00	0.21	1.67	-0.52	3.45	-15.31	1.48	0.95	0.63	0.39	1.81	-0.02	0.70	-0.09	0.22	0.00	0.00	1.88	0.00	
Sep	165.74	160.45	200.99	189.03	276.37	155.21	133.60	149.63	160.48	158.75	177.07	179.94	66.09	100.81	167.19	179.50	136.82	100.00	1.51	1.13	1.66	0.64	6.31	6.26	1.75	0.21	0.25	2.13	4.40	0.22	0.00	0.99	0.00	8.07	2.03	0.00	
October	165.55	163.15	194.05	190.59	215.82	164.52	139.92	150.16	161.65	168.65	177.21	187.63	65.61	102.63	167.19	186.97	142.08	100.00	-0.11	1.68	-3.45	0.83	-21.91	6.00	4.73	0.35	0.73	6.23	0.08	4.27	-0.72	1.80	0.00	4.16	3.84	0.00	
Nov	171.90	164.97	210.17	193.25	316.80	162.25	138.69	152.66	162.76	172.51	177.86	188.37	65.61	102.81	167.19	200.81	144.48	100.00	3.83	1.12	8.31	1.40	46.79	-1.38	-0.87	1.67	0.69	2.29	0.37	0.39	0.00	0.18	0.00	7.40	1.69	0.00	
Dec	173.53	167.69	210.13	196.53	295.81	224.88	137.90	152.89	163.04	172.00	177.74	189.25	65.61	102.03	167.19	200.81	144.70	100.00	0.95	1.65	-0.02	1.69	-6.63	38.60	-0.57	0.15	0.17	-0.30	-0.07	0.47	0.00	-0.76	0.00	0.00	0.16	0.00	
2012 Jan	173.40	163.18	219.06	192.38	387.21	228.71	141.53	153.04	164.20	177.74	172.37	190.86	65.61	99.90	190.21	203.24	147.93	100.00	-0.08	-2.69	4.25	-2.11	30.90	1.70	2.63	0.10	0.71	3.34	-3.02	0.85	0.00	-2.09	13.77	1.21	2.23	0.00	
Feb	172.93	163.17	216.04	190.50	377.02	232.05	142.38	153.04	164.79	179.71	172.44	189.33	65.61	100.15	190.21	205.40	151.09	100.00	-0.27	-0.01	-1.38	-0.97	-2.63	1.46	0.60	0.00	0.36	1.11	0.04	-0.80	0.00	0.24	0.00	1.06	2.14	0.00	
Mar	174.01	163.13	217.85	188.68	401.67	223.30	143.00	154.20	165.38	181.17	173.92	193.24	65.65	100.28	190.21	207.90	151.67	100.00	0.63	-0.03	0.84	-0.95	6.54	-3.77	0.44	0.76	0.36	0.81	0.86	2.07	0.05	0.13	0.00	1.22	0.38	0.00	
Apr	173.78	162.96	217.21	188.19	400.07	220.16	144.00	154.78	167.00	180.98	173.93	193.42	65.65	100.22	190.21	207.92	150.44	100.00	-0.13	-0.10	-0.30	-0.26	-0.40	-1.41	0.70	0.38	0.98	-0.11	0.01	0.09	0.00	-0.06	0.00	0.01	-0.81	0.00	
May	169.37	163.58	203.06	189.20	290.37	221.72	145.33	154.38	167.48	183.94	173.93	195.81	65.65	100.34	190.21	207.92	150.55	100.00	-2.54	0.38	-6.52	0.54	-27.42	0.71	0.92	-0.26	0.29	1.64	0.00	1.24	0.00	0.12	0.00	0.00	0.07	0.00	
June	177.48	164.11	227.37	190.87	457.34	222.81	146.64	155.35	168.10	183.04	173.81	192.91	65.65	100.81	190.21	207.92	149.38	100.00	4.79	0.32	11.97	0.88	57.50	0.49	0.90	0.62	0.37	-0.48	-0.07	-1.48	0.00	0.46	0.00	0.00	-0.78	0.00	

	Consumer Price Index - CPI (June 2004 =100)																		% change in CPI / Inflation Rate																			
	Total	Total Excluding Fish	1. Food and beverages Including Fish	Food and beverages Excluding Fish	1.1 Fish	2. Tobacco	3. Clothing & footwear	4. Housing, water, electricity, gas & other fuels	Actual rentals for housing	5. Furnishing, household equipments & routine maintenance of	6. Health	7. Transport	8. Communication	9. Recreation & culture	10. Education	11. Hotels, cafes & restaurants	12. Miscellaneous goods & services	13. Religious activity	Total	Total Excluding Fish	Food and beverages Including Fish	Food and beverages Excluding Fish	Fish	Tobacco	Clothing & footwear	Housing, water, electricity, gas & other fuels	Actual rentals for housing	Furnishing, household equipments & routine maintenance of	Health	Transport	Communication	Recreation & culture	Education	Hotels, cafes & restaurants	Miscellaneous goods & services	Religious activity		
	Weights	48.90	46.48	13.39	10.97	2.42	0.93	2.45	12.30	7.17	2.85	2.76	2.92	3.84	2.10	1.51	0.77	2.96	0.11	48.90	46.48	13.39	10.97	2.42	0.93	2.45	12.30	7.17	2.85	2.76	2.92	3.84	2.10	1.51	0.77	2.96	0.11	
2009	130.21	130.13	151.57	155.95	131.68	111.35	109.30	131.18	143.81	129.43	151.16	153.56	61.32	88.34	150.19	141.33	118.07	100.00	4.53	5.48	0.52	2.93	-10.70	-1.80	3.21	7.82	14.29	10.94	2.25	0.98	-0.75	5.01	35.09	2.57	7.10	0.00		
2010	138.21	138.02	162.90	167.54	141.88	110.98	112.54	141.13	153.04	137.17	158.21	158.66	61.46	93.41	164.38	145.89	123.88	100.00	6.15	6.07	7.48	7.43	7.74	-0.33	2.96	7.59	6.42	5.98	4.66	3.32	0.23	5.74	9.44	3.23	4.93	0.00		
2011	153.79	150.03	195.36	188.60	226.03	141.21	127.04	145.24	159.87	142.94	174.92	180.47	61.61	91.43	194.52	168.68	133.07	100.00	11.27	8.70	19.93	12.57	59.31	27.24	12.89	2.91	4.46	4.20	10.56	13.74	0.24	-2.13	18.34	15.62	7.42	0.00		
July 2010 to June 2011	144.37	142.90	176.68	177.56	172.71	116.38	115.53	143.95	156.81	137.82	164.27	165.46	61.56	93.16	180.46	150.26	125.13	100.00	14.66	10.99	22.00	11.06	72.99	66.43	23.19	2.15	4.39	14.48	12.76	16.56	-0.30	-1.41	16.74	29.80	18.07	0.00		
July 2011 to June 2012	165.53	158.60	215.55	197.20	298.78	193.69	142.32	147.05	163.70	157.78	185.23	192.86	61.38	91.85	210.67	195.05	147.75	100.00																				
June 2012 / June 2011																			12.55	8.94	16.98	6.08	53.00	58.35	24.50	2.42	5.50	21.69	6.73	7.25	-1.35	2.80	16.62	25.18	16.18	0.00		
2011 June	155.53	150.22	200.21	187.57	257.53	138.69	124.62	146.97	159.34	140.21	178.58	183.61	62.07	90.85	194.52	166.11	132.07	100.00	0.91	0.34	0.84	-1.07	7.71	10.19	0.75	0.16	0.25	2.77	0.24	0.19	0.00	0.45	0.00	2.22	3.30	0.00		
July	155.63	149.23	204.88	188.64	278.54	139.34	125.94	143.41	159.46	140.95	172.95	183.61	61.99	87.83	194.52	166.11	132.76	100.00	0.06	-0.66	2.33	0.57	8.16	0.47	1.06	-2.42	0.08	0.53	-3.15	0.00	-0.13	-3.33	0.00	0.00	0.52	0.00		
Aug	156.12	150.96	204.53	193.35	255.24	137.71	127.66	144.60	160.08	141.40	172.95	184.90	61.90	87.83	194.52	166.11	135.00	100.00	0.32	1.16	-0.17	2.50	-8.37	-1.18	1.36	0.83	0.39	0.31	0.00	0.71	-0.14	0.01	0.00	0.00	1.69	0.00		
Sep	158.15	153.01	206.34	195.20	256.84	143.21	131.88	144.90	160.48	142.60	183.63	185.75	61.90	89.25	194.52	179.50	137.52	100.00	1.30	1.36	0.88	0.96	0.63	4.00	3.31	0.21	0.25	0.85	6.17	0.46	0.00	1.61	0.00	8.07	1.86	0.00		
Oct	158.67	156.20	199.64	198.21	206.14	150.56	142.24	145.15	161.65	152.89	183.89	193.64	61.18	92.44	194.52	186.97	143.33	100.00	0.33	2.09	-3.25	1.54	-19.74	5.13	7.85	0.18	0.73	7.22	0.14	4.25	-1.17	3.58	0.00	4.16	4.23	0.00		
Nov	164.11	157.80	215.54	200.14	285.37	152.48	142.06	146.62	162.76	156.06	184.90	194.86	61.18	92.55	194.52	200.81	145.75	100.00	3.42	1.02	7.96	0.98	38.44	1.28	-0.13	1.01	0.69	2.07	0.55	0.63	0.00	0.11	0.00	7.40	1.69	0.00		
Dec	166.04	160.60	216.41	204.47	270.58	241.17	140.25	146.80	163.04	154.80	184.90	196.50	61.18	92.58	194.52	200.81	146.04	100.00	1.18	1.77	0.40	2.16	-5.18	58.16	-1.27	0.12	0.17	-0.80	0.00	0.84	0.00	0.03	0.00	0.00	0.20	0.00		
2012 Jan	170.86	161.93	225.81	200.10	342.43	236.92	145.11	147.05	164.20	161.18	188.14	195.83	61.18	93.24	226.83	203.24	153.35	100.00	2.90	0.83	4.34	-2.14	26.55	-1.76	3.46	0.17	0.71	4.12	1.75	-0.34	0.00	0.72	16.62	1.21	5.00	0.00		
Feb	170.35	161.88	221.89	197.37	333.14	237.24	146.76	147.73	164.79	164.91	188.28	192.88	61.18	93.09	226.83	205.40	157.09	100.00	-0.30	-0.03	-1.73	-1.37	-2.71	0.13	1.14	0.47	0.36	2.31	0.07	-1.51	0.00	-0.16	0.00	1.06	2.44	0.00		
Mar	171.69	162.36	224.58	196.73	350.93	224.77	148.41	148.85	165.38	167.58	190.82	195.05	61.23	93.30	226.83	207.90	157.04	100.00	0.79	0.30	1.21	-0.32	5.34	-5.26	1.12	0.76	0.36	1.62	1.35	1.13	0.09	0.23	0.00	1.22	-0.03	0.00		
Apr	171.54	162.39	223.22	195.87	347.30	220.43	149.96	149.82	167.00	167.49	190.82	195.71	61.23	93.32	226.83	207.92	156.13	100.00	-0.09	0.02	-0.61	-0.44	-1.03	-1.93	1.05	0.65	0.98	-0.05	0.00	0.34	0.00	0.03	0.00	0.01	-0.58	0.00		
May	168.20	163.18	209.46	197.26	264.77	220.84	152.44	149.17	167.48	172.94	190.85	198.68	61.23	93.39	226.83	207.92	155.52	100.00	-1.95	0.48	-6.17	0.71	-23.76	0.18	1.66	-0.43	0.29	3.25	0.02	1.52	0.00	0.07	0.00	0.00	-0.39	0.00		
June	175.05	163.65	234.21	198.97	394.04	219.61	155.15	150.53	168.10	170.62	190.59	196.92	61.23	93.39	226.83	207.92	153.44	100.00	4.07	0.29	11.82	0.86	48.82	-0.55	1.78	0.91	0.37	-1.34	-0.14	-0.89	0.00	0.01	0.00	0.00	-1.34	0.00		

Annex 6: Atolls - Consumer Price Index and Inflation rates by Major categories

		Consumer Price Index - CPI (June 2004 =100)															% change in Consumer Price Index - CPI															
		Total	Total Excluding Fish	1. Food and beverages Including Fish	Food and beverages Excluding Fish	1.1 Fish	2. Tobacco	3. Clothing & footwear	4. Housing, water, electricity, gas & other fuels	5. Furnishing, household equipments & routine maintenance of	6. Health	7. Transport	8. Communication	9. Recreation & culture	10. Education	12. Miscellaneous goods & services	Total	Total Excluding Fish	Food and beverages Including Fish	Food and beverages Excluding Fish	Fish	of Tobacco	Clothing & footwear	Housing, water, electricity, gas & other fuels	Furnishing, household equipments & routine maintenance of	Health	Transport	Communication	Recreation & culture	Education	Miscellaneous goods & services	
Weights		51.10	48.96	19.92	17.78	2.14	1.83	3.51	7.18	2.44	2.66	2.14	1.98	2.83	1.63	4.96	51.10	48.96	19.92	17.78	2.14	1.83	3.51	7.18	2.44	2.66	2.14	1.98	2.83	1.63	4.96	
2009		133.89	134.01	148.86	150.97	131.32	117.30	117.21	146.13	143.16	128.84	144.50	74.67	91.70	115.96	115.54	3.48	4.53	2.13	4.52	-16.16	-2.22	5.33	6.89	8.20	3.31	0.33	0.00	-4.51	8.10	5.21	
2010		143.32	143.49	155.11	157.01	139.36	114.76	118.44	154.61	148.89	169.27	150.19	74.67	93.20	119.92	121.37	7.04	7.08	4.20	4.00	6.12	-2.17	1.04	5.81	4.00	31.38	3.94	0.00	1.63	3.41	5.04	
2011		163.76	159.75	185.08	176.60	255.38	147.29	129.68	157.31	160.91	184.97	170.41	74.44	97.92	122.96	132.49	14.27	11.33	19.32	12.48	83.25	28.35	9.49	1.74	8.07	9.27	13.47	-0.31	5.07	2.54	9.16	
July 2010 to June 2011		149.03	147.64	164.35	162.37	180.76	120.27	121.09	156.38	153.41	173.89	157.86	74.67	94.91	121.44	124.91	17.36	12.69	25.32	14.69	104.55	63.28	14.16	2.80	11.39	-5.41	15.64	-0.63	3.58	1.25	13.62	
July 2011 to June 2012		174.91	166.38	205.96	186.22	369.75	196.38	138.23	160.76	170.87	164.49	182.55	74.20	98.30	122.96	141.92																
June 2012 / June 2011																	10.70	5.33	19.23	7.69	73.68	57.47	5.85	5.29	11.34	-22.97	9.22	-0.63	0.86	0.00	11.75	
2011	June	162.43	156.21	187.32	173.20	304.46	142.52	133.37	154.75	158.79	177.54	172.04	74.67	97.75	122.96	130.78	2.32	1.92	2.84	1.94	7.32	8.69	6.79	0.35	3.92	-0.19	0.12	0.00	-0.25	0.00	0.77	
	July	169.92	162.52	195.28	177.95	339.06	146.28	133.61	156.36	158.02	191.37	172.04	74.20	97.62	122.96	130.37	4.61	4.03	4.25	2.74	11.37	2.64	0.18	1.04	-0.49	7.79	0.00	-0.63	-0.13	0.00	-0.32	
	Aug	170.12	165.95	194.01	185.41	265.29	150.34	134.50	156.89	161.31	191.30	173.22	74.20	98.05	122.96	132.82	0.11	2.11	-0.65	4.19	-21.76	2.77	0.66	0.34	2.08	-0.04	0.69	0.00	0.44	0.00	1.88	
	Sep	173.00	167.51	198.43	186.38	298.42	161.34	135.75	157.22	165.51	192.59	172.99	74.20	98.97	122.96	135.77	1.69	0.94	2.28	0.52	12.49	7.32	0.93	0.21	2.60	0.67	-0.14	0.00	0.94	0.00	2.23	
	Oct	172.14	169.75	191.18	186.89	226.74	171.66	139.06	158.16	167.25	192.64	180.36	74.20	99.93	122.96	140.58	-0.50	1.34	-3.65	0.28	-24.02	6.40	2.44	0.60	1.05	0.02	4.26	0.00	0.97	0.00	3.54	
	Nov	179.36	171.79	207.27	189.79	352.28	167.25	137.14	162.59	170.28	193.04	180.50	74.20	100.09	122.96	142.95	4.19	1.20	8.41	1.55	55.36	-2.57	-1.38	2.80	1.81	0.21	0.08	0.00	0.16	0.00	1.69	
	Dec	180.70	174.41	206.56	192.37	324.29	216.56	136.89	162.93	171.21	192.80	180.50	74.20	98.66	122.96	143.05	0.75	1.53	-0.34	1.36	-7.94	29.48	-0.18	0.21	0.55	-0.12	0.00	0.00	-1.43	0.00	0.07	
2012	Jan	175.84	164.38	215.08	188.23	437.76	224.52	139.71	162.75	175.71	136.51	184.82	74.20	97.05	122.96	143.90	-2.69	-5.75	4.12	-2.15	34.99	3.68	2.06	-0.11	2.63	-29.20	2.39	0.00	-1.63	0.00	0.59	
	Feb	175.39	164.40	212.98	187.23	426.54	229.40	139.99	161.49	176.41	136.52	184.93	74.20	97.62	122.96	146.73	-0.25	0.02	-0.98	-0.53	-2.56	2.17	0.20	-0.77	0.40	0.01	0.06	0.00	0.59	0.00	1.97	
	Mar	176.23	163.85	214.04	184.52	458.95	222.55	139.57	162.65	176.25	136.76	190.85	74.20	97.75	122.96	147.69	0.48	-0.33	0.50	-1.45	7.60	-2.98	-0.30	0.72	-0.09	0.17	3.20	0.00	0.13	0.00	0.65	
	Apr	175.92	163.50	214.04	184.44	459.65	220.02	140.40	162.57	175.86	136.78	190.38	74.20	97.56	122.96	146.23	-0.18	-0.22	0.00	-0.04	0.15	-1.14	0.59	-0.05	-0.22	0.01	-0.25	0.00	-0.19	0.00	-0.99	
	May	170.48	163.97	199.38	184.93	319.26	222.17	140.92	162.60	175.85	136.75	192.13	74.20	97.73	122.96	146.78	-3.09	0.29	-6.85	0.26	-30.54	0.98	0.37	0.02	-0.01	-0.02	0.92	0.00	0.17	0.00	0.37	
	June	179.81	164.54	223.33	186.52	528.79	224.44	141.17	162.93	176.80	136.76	187.89	74.20	98.58	122.96	146.15	5.48	0.35	12.02	0.86	65.63	1.02	0.18	0.20	0.54	0.00	-2.21	0.00	0.87	0.00	-0.43	