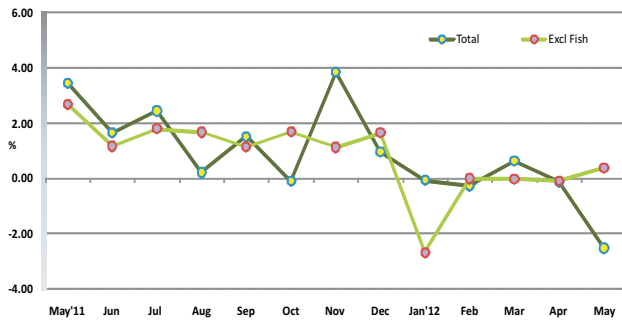


### 1. Inflation Rate of Nation (Monthly): May 2012 compared to April 2012)

To measure month to month inflation, this month's index is compared with the previous month inflation (for e.g: May '12 /April '12). The monthly inflation for May 2012 is -2.54% and 0.38% is the total excluding fish.

Figure 8. Monthly Inflation Rate of Nation (compared to the previous month)

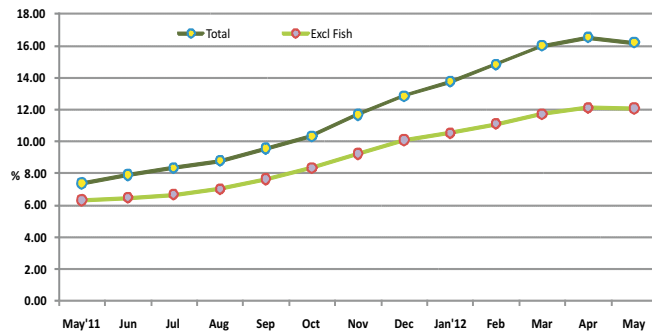


Month	Total	Excl Fish
May'11	3.44	2.68
Jun	1.64	1.16
Jul	2.43	1.79
Aug	0.21	1.67
Sep	1.51	1.13
Oct	-0.11	1.68
Nov	3.83	1.12
Dec	0.95	1.65
Jan'12	-0.08	-2.69
Feb	-0.27	-0.01
Mar	0.63	-0.03
Apr	-0.13	-0.10
<b>May</b>	<b>-2.54</b>	<b>0.38</b>

### 2. Inflation Rate of Nation (Annualized): Jun '11 to May '12/ Jun '10 to May '11

The annualized inflation rate for any month compares the average for the 12 monthly indices with that of the preceding 12 months (Eg: Jun '11 to May '12 /Jun '10 to May '11). This index shows an annual inflation of 16.19%, and the annualized total excluding fish is 12.06%.

Figure 9. Annualized Inflation Rate of Nation (compared to the past 12 month period)

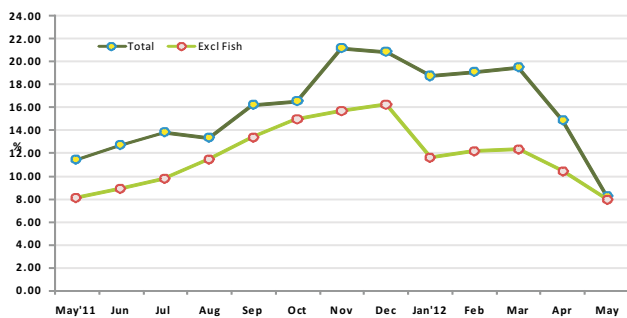


Month	Total	Excl Fish
May'11	7.37	6.31
Jun	7.89	6.46
Jul	8.33	6.66
Aug	8.79	7.02
Sep	9.56	7.63
Oct	10.32	8.34
Nov	11.67	9.22
Dec	12.83	10.08
Jan'12	13.75	10.51
Feb	14.83	11.09
Mar	15.99	11.70
Apr	16.53	12.10
<b>May</b>	<b>16.19</b>	<b>12.06</b>

### 3. Inflation Rate of Nation (month on month): May'12/ May'11

To measure the month on month change at one point in time, the index of the month is compared with that of the same month in the preceding year (Eg: May '12 /May '11). The month on month index for May shows an inflation of 8.23% and the inflation excluding fish is 7.95%.

Figure 10. Month on Month inflation Rate of Nation (compared to the same month of the previous year)



Month	Total	Excl Fish
May'11	11.40	8.12
Jun	12.68	8.91
Jul	13.79	9.79
Aug	13.36	11.46
Sep	16.24	13.40
Oct	16.54	14.96
Nov	21.16	15.70
Dec	20.85	16.25
Jan'12	18.73	11.62
Feb	19.07	12.19
Mar	19.49	12.35
Apr	14.87	10.42
<b>May</b>	<b>8.23</b>	<b>7.95</b>

# CONSUMER PRICE INDEX - NATION

Department of National Planning  
Ministry of Finance and Treasury

May 2012

## Consumer Price Index-Nation May 2012

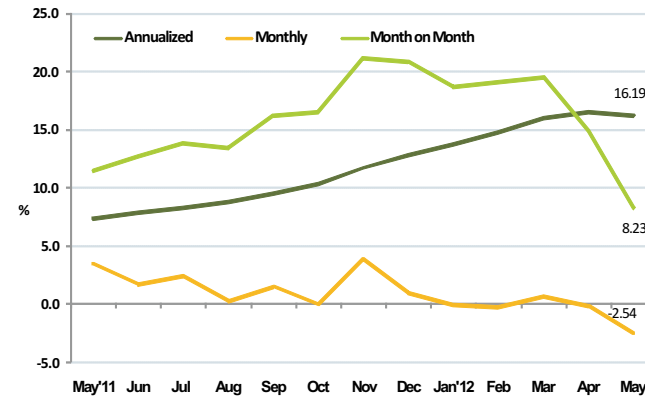
### Inflation Rate of Nation

The Consumer Price Index (CPI) for nation rose at an annualized rate of 16.19 percent in May 2012. Fish and tobacco categories showed the highest inflation followed by hotels, cafes & restaurants category.

Monthly CPI of May 2012 decreased by 2.54 percent compared to April 2012. The deflation was mainly driven from fish category.

When May 2012 is compared with May 2011, the consumer price index increased by 8.23 percent. Tobacco category showed the highest inflation followed by hotel, cafes & restaurants and furnishing, household equipments & routine maintenance categories.

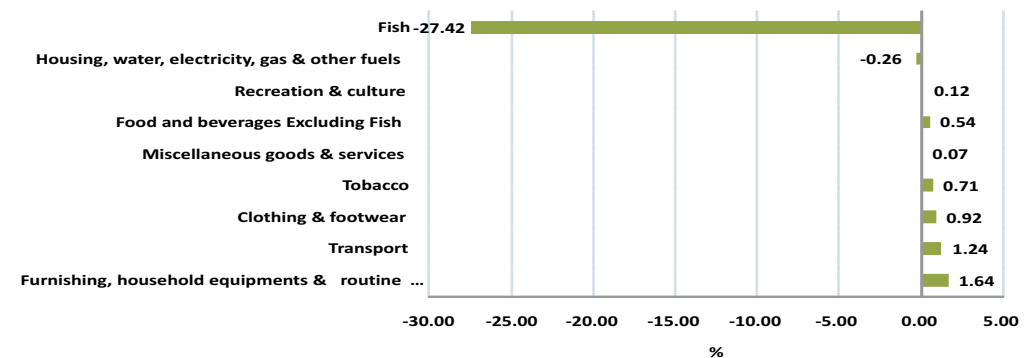
Figure 1: Inflation rates of Nation, May-2012



Month	Annualized	Monthly	Month on Month
May'11	7.37	3.44	11.40
Jun	7.89	1.64	12.68
Jul	8.33	2.43	13.79
Aug	8.79	0.21	13.36
Sep	9.56	1.51	16.24
Oct	10.32	-0.11	16.54
Nov	11.67	3.83	21.16
Dec	12.83	0.95	20.85
Jan'12	13.75	-0.08	18.73
Feb	14.83	-0.27	19.07
Mar	15.99	0.63	19.49
Apr	16.53	-0.13	14.87
<b>May</b>	<b>16.19</b>	<b>-2.54</b>	<b>8.23</b>

### Main contributions to the change in the CPI - Monthly

Figure 2: Inflation by major categories in May CPI - Monthly



## Major contributors to the change in the CPI- Monthly basis

Fish category pulled down the national monthly inflation by 27%, whereas furnishing, household equipments & routine maintenance pulled up the overall monthly inflation by 2%. Additionally transport and clothing & footwear categories also pulled up the overall monthly inflation.

While decline in the fish category was the major factor contributing to overall monthly deflation, items which contributed most to this were other tuna for which price declined by 35% while skipjack tuna prices declined by 33%.

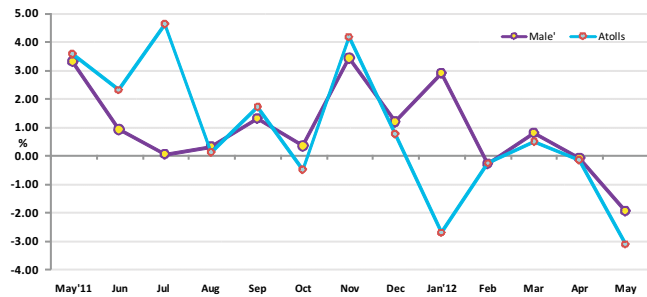
As for furnishing household equipment & routine maintenance category, single bed sheet and plastic chair prices increased by 7% and 6% respectively while gas stove prices increased by 5% in May 2012.

In transport category, international airfare prices increased by 7% compared to the previous month while petrol prices declined by 0.33% in May 2012.

## 1. Inflation Rate of Male' & Atolls (Monthly): compared to previous month

The monthly inflation rate for both Male' and Atolls fluctuated over the past one year period. As seen in figure 3; inflation rate in Male' peak 3 times in last one year. First in May 2011 followed by November 2011 and again in January 2012. These peaks were the results of two main policy decisions, namely currency devaluation in April 2011, and introduction on GST for selected products in October 2011 and renewal of the GST rate from 3% to 6% in January 2012. In general, the same trend follows in the Atolls except for July 2011 and January 2012.

**Figure 3. Monthly Inflation Rate, Male' & Atolls, (compared to the previous month)**



**Table 1. Inflation by major categories, National, Male' & Atolls, May2012 (compared to the previous month)**

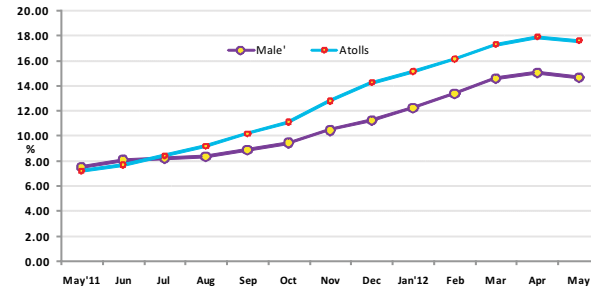
Categories	Monthly inflation- May 2012		
	National	Male'	Atoll
Total	-2.54	-1.95	-3.09
Total Excluding Fish	0.38	0.48	0.29
Food and beverages Excluding Fish	0.54	0.71	0.26
Fish	-27.42	-23.76	-30.54
Tobacco	0.71	0.18	0.98
Clothing & footwear	0.92	1.66	0.37
Housing, water, electricity, gas & other fuels	-0.26	-0.43	0.02
Furnishing, household equipments & routine maintenance	1.64	3.25	-0.01
Health	0.00	0.02	-0.02
Transport	1.24	1.52	0.92
Recreation & culture	0.12	0.07	0.17
Miscellaneous goods & services	0.07	-0.39	0.37

In Male' electricity prices declined due to decrease in fuel surcharges while cooking gas prices increased in the atolls, resulting in the opposing trends in housing category. The slight decline in atolls depicted for furnishing was the result of decrease in prices of insecticides while in Male' some basic bedding and furniture prices increased. As for the same percentage with opposing signs exhibited in health is due to price decrease of some over the counter medicines like panadol in the atolls while prices increase in Male' for some soothing balms.

## 2. Inflation Rate of Male' & Atolls (Annualized): Jun '11 to May '12/ Jun '10 to May '11

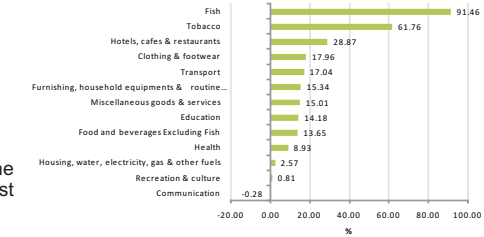
The annualized inflation rate for Male' and Atolls increased over time with atolls inflation rate being highest at the end of May 2012. The annualized inflation rate for Atolls was higher than that of Male' by 3 percentage points in May 2012.

**Figure 4: Annualized Inflation Rate, Male' & Atolls (compared to the past 12 month period)**



In May and June 2011 inflation rate in the atolls is seen to be lower than the inflation rate in Male' and rose gradually from July 2011 onwards reaching 17.59% in May 2012 for Atolls while for Male' it stood at 14.69%.

**Figure 5: Inflation by major categories in May CPI- Annualized**



Annualized inflation rate of the nation was 16.19%. Fish showed the highest inflation with 91% followed by tobacco at 62%. The third highest category was hotels, cafes & restaurants which registered 29%.

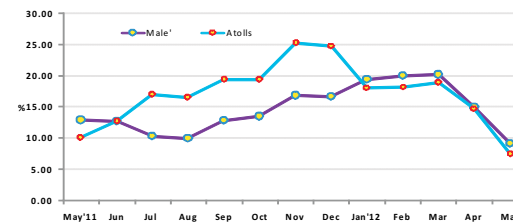
The increase in fish category was due to an increase in the price of other tuna by 196%. Additionally skipjack tuna and reef fish prices went up by 109% and 67% respectively. Reef fish and canned tuna fish also increased during this period.

From tobacco category, prices of aracanut increased by 86% while cigarette prices also went up by 54%, reflecting the increase in the import duties on cigarette at end of 2011.

As for hotels, cafes & restaurants category, on average prices of breakfast meals went up by 49%. Additionally prices of pizza and restaurant meals went up by 28% and 21% respectively.

## 3. Inflation Rate of Male' & Atolls (month on month): May '12 / May '11

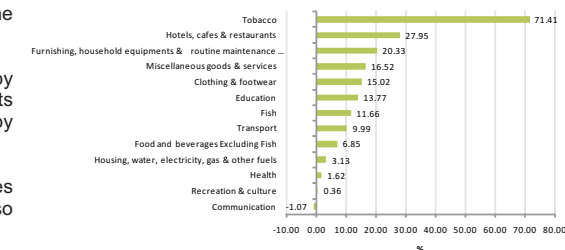
**Figure 6. Month on Month inflation Rate, Male' & Atolls (compared to the same month of the previous year)**



Inflation rates in the atolls were higher for the period July to December 2011 as seen in figure 6. The change in trend following January 2012 maybe attributed to the fact that health related expenses in the atolls is largely covered under the universal health care program, while in Male' the clinics were not.

When May 2011 was compared to May 2010, inflation stood at 12.88% for Male' and 10.06% in atolls. The price rise was attributed partly to higher costs of imports due to the depreciation in the currency in April 2011. Inflation has hence, been rising. However, when May 2012 was compared to May 2011 the inflationary impact of the depreciation effect seems to be stabilizing as seen in figure 6. The inflation rate for May 2012 for Atolls is lower than that of Male' reaching 7.39% for Atolls and 9.13% for Male'.

**Figure 5. Inflation by major categories in May CPI- Month on month**



When May 2012 was compared to the same period of previous year, all the categories recorded an inflation with the exception of communication category. Tobacco showed the highest inflation with 71% followed by hotels, cafes & restaurants at 28% and furnishing, households equipments & routine maintenance which registered 20% inflation.

In tobacco category, on average cigarette prices increased by 80% due to the increase in import duties on tobacco products on 1 December 2011. Additionally aracanut prices went up by 44%, when compared to May 2011.

In hotel, cafes & restaurants category, breakfast prices increased by 29% while restaurant meal and pizza prices also increased by 23% and 15% respectively.

## Annex 1: Average monthly Prices of selected Items, CPI National, Male' & Atolls, May 2012

Description	Specification	Unit	National - Monthly			Male' - Monthly			Atolls - Monthly		
			Average Price		% Chn	Average Price		% Chn	Average Price		% Chn
			April 2012	May 2012	April 2012 / May2012	April 2012	May 2012	April 2012 / May2012	April 2012	May 2012	April 2012 / May2012
<b>Food</b>											
Apple	Apple	1 Piece	5.62	5.91	5.13	5.54	5.84	5.38	5.70	5.98	4.90
Aracanut	Raw Aracanut / Uncut / Lt	1 kg	100.03	100.28	0.24	90.03	91.46	1.60	110.04	109.09	-0.86
Baby food - cereal	Nestum / Wheat & Honey	250 Gram / Tin	49.23	49.83	1.23	50.82	49.60	-2.40	47.64	50.07	5.10
Baby food - cereal	Promina / Banana	250 Gram / Packet	21.11	21.01	-0.44	20.61	20.56	-0.25	21.60	21.47	-0.61
Banana	Bonthiraily	1 Piece	1.75	1.89	8.22	2.19	2.47	13.13	1.31	1.31	0.00
Beans	Fresh Beans	1 kg	52.20	51.69	-0.97	54.39	53.38	-1.85	50.00	50.00	0.00
Biscuits	Cream Cracker, Khong Gu	200 gram, packet	13.34	13.23	-0.85	13.37	13.14	-1.70	13.31	13.31	0.00
Biscuits	Marie Biscuit	400 Gram	23.03	23.19	0.73	21.89	22.09	0.87	24.16	24.30	0.61
Bread	Small Bread	1 Piece	12.56	12.56	0.01	12.54	12.54	0.00	12.58	12.58	0.02
Bread	Large	1 Piece	19.62	19.68	0.29	23.34	23.25	-0.38	15.90	16.10	1.27
Bread spread	Chocolate Crumpy	225 Gram	45.22	44.69	-1.18	42.52	43.85	3.14	47.92	45.53	-5.01
Bun	Small Buns/ Un packed	1 Piece	0.76	0.76	0.00	0.54	0.54	0.00	0.98	0.98	0.00
Butter bun	butter buns / Packed	1 Piece	4.33	4.34	0.24	4.16	4.16	0.00	4.50	4.52	0.46
Cabbage	Fresh Cabbage	1 kg	31.33	33.28	6.23	29.33	33.23	13.31	33.33	33.33	0.00
Candy	Solano	1 Piece / 25 Gram	0.38	0.38	0.37	0.32	0.31	-0.53	0.45	0.45	1.01
Canned baked beans	Baked Beans / Canned	400 Gram	14.55	14.51	-0.31	14.43	14.32	-0.77	14.67	14.70	0.15
Canned green peas	Green peas / Processed p	440 Gram	10.68	10.77	0.86	11.36	11.54	1.62	10.00	10.00	0.00
Canned mixed fruits	Canned Mixed Fruit / Smz	398 Gram	29.24	29.05	-0.65	28.20	28.20	0.00	30.29	29.90	-1.26
Canned pine Apple	Canned Pine Apple	567 Gram	23.39	23.63	1.04	22.64	23.08	1.92	24.14	24.19	0.22
Carrot	Fresh Carrot	1 kg	29.94	29.33	-2.01	26.54	25.34	-4.53	33.33	33.33	0.00
Chicken sausage	Chicken Sausage / Packed	340 Gram	23.26	23.08	-0.78	20.52	20.16	-1.76	26.00	26.00	0.00
Chilli powder	Chillie Powder / Packed	Lt50 Gram	7.30	7.35	0.68	6.80	6.90	1.47	7.81	7.81	0.00
Cigarette	Marlboro	20 Piece / 1 Pack	38.53	38.75	0.55	38.66	38.66	0.00	38.41	38.84	1.11
Coffee	Nescafe, Cafe' soluble cof	50 Gram	41.91	42.10	0.45	42.15	42.00	-0.35	41.67	42.20	1.27
Coke	Dubai coke / Canned	300 MI	10.85	10.86	0.10	11.21	10.95	-2.25	10.49	10.76	2.61
Coke	Coca Cola / Large Bottle	1500 MI	30.93	30.96	0.09	30.10	30.35	0.83	31.76	31.56	-0.61
Condensed milk	Double Peach	397Gram, tin	15.75	15.72	-0.21	15.27	15.26	-0.02	16.23	16.17	-0.39
Condensed milk	Cow Bell	397 Gram / Tin	15.23	15.65	2.76	14.72	15.27	3.72	15.74	16.04	1.86
Cooking oil	Bemoli Oil	2 Ltr	64.31	61.44	-4.46	58.87	57.42	-2.46	69.75	65.46	-6.15
Cooking oil	Sun Flower Oil	2 Ltr	102.45	96.14	-6.16	102.08	91.51	-10.35	102.82	100.77	-2.00
Corn flake	Kellogg's / Wheat and Ho	300 Gram	37.82	38.91	2.89	44.64	46.83	4.90	31.00	31.00	0.00
Cucumber	Fresh Cucumber	1 kg	28.28	30.05	6.23	33.41	36.94	10.56	23.16	23.16	0.00
Curry powder	Curry Powder / Antelope	340 Gram	39.47	39.63	0.40	42.15	42.47	0.76	36.79	36.79	0.00
Curry powder	Fish curry powder / Packe	50 Gram	7.10	7.28	2.52	6.77	6.88	1.64	7.44	7.69	3.33
Curry powder	Chicken curry powder / P;	50 Gram	7.14	7.32	2.58	6.92	7.13	3.10	7.36	7.52	2.09
Dhal	Yellow Colored Dhal	1 kg	50.15	49.42	-1.46	48.92	48.39	-1.09	51.38	50.46	-1.80
Egg	Chicken egg / Imported	1 Piece	1.65	1.68	1.98	1.52	1.55	2.55	1.78	1.80	1.49
Flour	Ordinary Flour / loose	1 kg	4.28	4.36	1.87	3.70	3.84	3.75	4.85	4.87	0.43
Frozen beef	Frozen Beef	1 kg	67.25	62.77	-6.67	69.51	70.02	0.74	65.00	55.52	-14.59
Frozen chicken	Frozen chicken / Whole cl	1 kg	55.73	54.97	-1.36	52.79	49.99	-5.32	58.66	59.95	2.20
Garlic	Garlic	100 Gram	5.05	4.59	-9.05	4.17	3.80	-8.88	5.94	5.39	-9.17
Ginger	Ginger	100 Gram	5.54	5.35	-3.35	4.04	3.90	-3.38	7.03	6.80	-3.34
Githeyo Mirus	Dhivehi mirus	1 Piece	2.90	2.76	-4.79	2.70	2.62	-3.07	3.10	2.91	-6.29
Green chilli	Green Chilli / Imported	100 Gram	19.35	20.05	3.60	6.80	8.19	20.52	31.90	31.90	0.00
Jam	Tova Brand / Bottle	450 Gram	26.04	26.07	0.11	25.38	25.24	-0.54	26.71	26.90	0.72
Juice-Foster Clark	Foster Clark / Powdered J	750 Gram	67.08	67.71	0.94	65.99	66.46	0.70	68.17	68.97	1.17
Juice-Sun quick	Sun quick / Orange Juice /	840 MI	74.57	75.42	1.14	73.38	74.98	2.18	75.77	75.87	0.13
lemon	Imported lemon	1 Piece	2.17	2.18	0.53	2.39	2.25	-5.74	1.95	2.11	8.22
Margarine	Daisy brand tub / Small	250 Gram	27.60	28.13	1.90	27.01	27.16	0.57	28.19	29.09	3.19
Milk powder	Coast	1800 Gram, tin	258.96	256.80	-0.83	247.58	243.87	-1.50	270.33	269.73	-0.22
Milk powder	Anchor Milk	1800 Gram / Tin	258.72	259.72	0.39	276.24	278.25	0.72	241.19	241.19	0.00
Milk powder	Nido	1800 Gram / Tin	269.86	270.73	0.32	264.89	267.86	1.12	274.84	273.60	-0.45
Milo	Nestle Milo Powder / Can	400 Gram	84.25	84.14	-0.13	86.14	86.14	0.00	82.36	82.14	-0.27
Mixed fresh vegetables	Mixed Vegetables	1 kg	40.30	41.39	2.70	40.76	42.57	4.45	39.84	40.21	0.91
Noodles	Mamee Noodles / Packet	85 Gram	4.52	4.54	0.58	4.14	4.14	0.00	4.90	4.95	1.07
Onion	Imported Onion	1 kg	10.03	10.41	3.78	9.71	10.15	4.48	10.34	10.67	3.12
Orange	Fresh Orange	1 Piece	4.06	4.91	20.94	3.58	4.64	29.85	4.54	5.18	13.93
Potato	Imported Potato	1 kg	9.97	12.72	27.56	9.31	12.47	33.95	10.63	12.96	21.96
Rice	Ordinary Rice / loose	1 kg	5.05	5.08	0.56	4.57	4.62	1.25	5.53	5.53	0.00
Rice-Basmati	Basmati Rice / Pre Packe	1 kg	28.84	28.95	0.40	28.28	28.40	0.41	29.40	29.51	0.39
Salt	Fine Salt / Packed	500 Gram	5.42	5.30	-2.30	5.29	5.12	-3.16	5.56	5.47	-1.48
Sauce	Tomato Sauce / life Branc	320 Gram / Bottled	14.05	14.47	3.00	15.07	15.60	3.51	13.03	13.34	2.41
Sauce	Chillie Sauce / life Brand	335 Gram / Bottled	15.44	15.44	-0.04	16.82	16.66	-0.96	14.06	14.21	1.06
Sauce	Chillie & Garlic Sauce / lif	320 Gram / Bottled	15.77	15.71	-0.39	17.22	17.11	-0.69	14.31	14.31	-0.02
Sugar	Dhoabraali Hakuru	1 kg	4.99	5.02	0.71	4.53	4.56	0.62	5.45	5.49	0.78

Description	Specification	Unit	National - Monthly			Male' - Monthly			Atolls - Monthly		
			Average Price		% Chn	Average Price		% Chn	Average Price		% Chn
			April 2012	May 2012	April 2012 / May2012	April 2012	May 2012	April 2012 / May2012	April 2012	May 2012	April 2012 / May2012
Tea leaves-tea bag	Today's Taste / 100 tea b	200 Gram	34.80	34.92	0.34	34.27	34.56	0.85	35.33	35.28	-0.15
Tea leaves-tea bag	Akbar / 100 tea bag	200 Gram	36.39	36.92	1.45	35.08	35.42	0.96	37.70	38.42	1.90
Tomato	Fresh Tomato	1Kg	35.40	26.15	-26.13	29.40	31.98	8.78	41.40	20.32	-50.91
Tomato paste	Tomato Paste / Small can	70 Gram	3.01	3.07	2.12	2.94	3.01	2.49	3.08	3.13	1.77
<b>Fish</b>											
Canned fish in brine	Felivaru Canned Fish / Ch	185 Gram	17.42	17.59	0.98	16.95	17.29	2.01	17.90	17.90	0.00
Canned fish in oil	Felivaru canned fish / Chu	185 Gram	18.92	18.93	0.05	18.16	18.22	0.38	19.68	19.63	-0.26
Other tuna	Other Tuna / Latti	1 kg	94.77	61.82	-34.77	94.77	61.82	-34.77	-	-	-
Reef fish	Reef Fish / Maaniya mas	1 kg	17.67	21.56	22.01	17.67	21.56	22.01	-	-	-
Skipjack tuna	Godha / Kalhubilamas	1 kg	93.03	61.97	-33.39	93.03	61.97	-33.39	-	-	-
Smoked fish	Smoked Fish (Valhoamas)	1 kg	116.20	141.18	21.50	142.39	132.36	-7.04	90.00	150.00	66.67
<b>Clothing and Footwear</b>											
Men's sandals	Most recently sold brand	1 Pair	237.81	237.82	0.00	196.83	196.83	0.00	278.80	278.82	0.01
Mens shirt	Men T-Shirt / Most Sold	r1 Piece	204.92	211.76	3.34	219.95	233.20	6.02	189.89	190.32	0.23
Mens trousers	Men's Trousers / Long	1 Piece	241.52	240.81	-0.29	229.60	229.60	0.00	253.44	252.03	-0.56
Mens t-shirt	Men Shirt / Most Sold Bra	1 Piece	199.01	203.61	2.31	186.13	194.97	4.75	211.88	212.24	0.17
Nylon faivaan	Size 10	1 Pair	14.89	14.92	0.23	14.20	14.20	0.00	15.58	15.64	0.44
School shoes	School Shoes/ Girl / Most	1 Pair	188.40	182.96	-2.89	188.50	188.50	0.00	188.29	177.42	-5.78
Tailoring national dress	National dress / Unstrect	1 Piece	127.31	127.79	0.38	150.00	150.00	0.00	104.61	105.58	0.92
Women's jeans	Women's Jeans / Fade	1 Piece	207.04	214.77	3.73	225.77	227.83	0.92	188.32	201.71	7.11
Women's sandals	Casual (home-wear)	1 Piece	172.62	181.80	5.32	200.00	219.73	9.87	145.25	143.87	-0.95
<b>Housing</b>											
Cement	Cement bag	50 kg	122.50	122.33	-0.14	122.00	122.00	0.00	123.00	122.67	-0.27
Construction charges	thakethi dheegen / in gro	1 sq foot	4.65	4.65	0.00	5.18	5.18	0.00	4.13	4.13	0.00
Cooking gas	Cooking gas / Excluding T	13 Kg	341.26	340.63	-0.19	390.00	390.00	0.00	292.52	291.25	-0.43
Electricity charges	300 Units	Total including fuel char	1,276.80	1,216.20	-4.75	1,276.80	1,216.20	-4.75	-	-	-
Electricity charges	500 Units	Total including fuel char	2,128.00	2,027.00	-4.75	2,128.00	2,027.00	-4.75	-	-	-
Electricity charges	575 Unit	Total including fuel char	2,465.95	2,349.80	-4.71	2,465.95	2,349.80	-4.71	-	-	-
Garbage disposal	Once a day / Individuals	Per Month	100.00	100.00	0.00	100.00	100.00	0.00	-	-	-
Kerosene oil	Kerosene oil	1 Ltr	16.89	17.04	0.86	16.56	16.56	0.00	17.23	17.52	1.69
Roofing sheet	0.6 mm / 1 feet	1 Piece	33.04	32.95	-0.25	30.24	30.24	0.00	35.83	35.67	-0.47
Water	MWSA desalinated water	1 Ton	62.33	62.33	0.00	62.33	62.33	0.00	-	-	-
<b>Furniture</b>											
Bed sheet	Single Bed sheet / Ordina	1 Piece	68.55	73.31	6.94	54.34	63.85	17.50	82.76	82.76	0.00
Chair	Plastic Chair / large / with	1 Piece	185.10	196.54	6.18	154.48	175.00	13.29	215.72	218.08	1.09
Fan	Electric fan (Ceiling) / Ush	1 Piece	529.33	533.63	0.81	514.51	514.51	0.00	544.14	552.74	1.58
Glasses	Plain Glass / Medium Size	1 Piece	8.63	8.21	-4.80	7.99	7.62	-4.71	9.26	8.81	-4.88
Insecticides	Insecticides / Mosfly Bran	400 MI	44.36	44.63	0.61	43.32	43.41	0.21	45.40	45.86	1.00
Insecticides	Insecticides / Bop Spray	B400 MI	43.04	-	-	40.38	-	-	45.70	35.38	-22.57
Light tube	Fluorescent tube / 2 feet	1 Piece	15.89	15.26	-3.92	17.27	15.97	-7.57	14.50	14.56	0.42
Sofa Set	Sofa set / Plywood with sj	1 Piece	7,521.00	7,521.00	0.00	8,427.00	8,427.00	0.00	6,615.00	6,615.00	0.00
Stove	2 Sided gas stove / Hitach	1 Piece	476.75	501.78	5.25	457.88	507.93	10.93	495.63	495.63	0.00
Washing machine	Washing Machine / Super	1 Piece	4,566.13	4,573.38	0.16	5,692.50	5,692.50	0.00	3,439.75	3,454.25	0.42
Washing power	Soklin Brand Washing pov	1 Kg	30.96	30.67	-0.93	23.97	23.47	-2.10	37.95	37.88	-0.19
Washing power	B 29 Brand Washing pow	1 Kg	28.75	28.08	-2.33	24.33	23.78	-2.23	33.17	32.37	-2.40
Water pump	Pedroller Water Pump /	1 Piece	3,170.68	3,160.79	-0.31	3,933.00	3,933.00	0.00	2,408.37	2,388.58	-0.82
<b>Health</b>											
Dental service (ordinary filling)	Dental Service / Ordinary	Per Patient	312.50	312.50	0.00	300.00	300.00	0.00	325.00	325.00	0.00
Diegen	Diegen / 200 ml	1 Bottle	36.19	36.19	0.00	39.29	39.29	0.00	33.09	33.09	0.00
Doctor's consulting fee-general	consultation fee / Genera	Per Patient	100.00	100.00	0.00	100.00	100.00	0.00	100.00	100.00	0.00
Doctor's consulting fee-special	Doctor consultation fee /	Per Patient	162.08	162.08	0.00	191.67	191.67	0.00	132.50	132.50	0.00
Forcevel	Forcevel / 500 mg	1 Tablet	3.74	3.74	0.00	4.00	4.00	0.00	3.48	3.48	0.00
Helibo orange	Helibo Orange / 200 ml	1 Bottle	53.58	53.58	0.00	58.75	58.75	0.00	48.40	48.40	0.00
Panadol	Panadol / 500 mg	1 Tablet	0.48	0.48	-1.30	0.50	0.50	0.00	0.46	0.45	-2.70
Vicks balm	Vicks Balm / 19 Gram	1 Bottle	13.99	14.07	0.60	14.67	14.83	1.14	13.31	13.31	0.00
Vitamin C	Vitamin C / 500 mg	1 Tablet	0.91	0.91	0.00	1.00	1.00	0.00	0.83	0.83	0.00
<b>Transport</b>											
Bicycle	Dahon	1 Piece	1,699.38	1,699.38	0.00	1,914.75	1,914.75	0.00	1,484.00	1,484.00	0.00
International airfare	Male'/Colombo/male'	Per Person	5,157.99	5,498.93	6.61	5,157.99	5,498.93	6.61	-	-	-
Motorcycle	Honda Wave 125 I	1 Piece	56,480.33	56,480.33	0.00	57,028.00	57,028.00	0.00	55,932.67	55,932.67	0.00
Motorcycle	Honda Wave 125 H	1 Piece	51,551.33	51,551.33	0.00	50,456.00	50,456.00	0.00	52,646.67	52,646.67	0.00
Petrol	Petrol	1 Ltr	16.70	16.64	-0.33	16.54	16.52	-0.14	16.85	16.76	-0.52
<b>Recreation</b>											
Color box	Swan Brand / Small Size /	1 Box	22.39	22.54	0.63	29.62	29.90	0.95	15.17	15.17	0.00
Glaze paper	Glaze Paper	1 Piece	2.29	2.28	-0.46	1.81	1.79	-1.16	2.78	2.78	0.00
Monitor book	Exercise Book / 200 Pages	1 Book	15.94	16.12	1.13	16.93	17.08	0.87	14.94	15.16	1.42
Pen	Red leaf Pen	1 Piece	5.11	5.09	-0.47	5.11	5.11	0.00	5.11	5.07	-0.94
Pen	Faster Pen	1 Piece	5.64	5.63	-0.14	5.95	5.90	-0.84	5.32	5.36	0.65

Description	Specification	Unit	National - Monthly			Male' - Monthly			Atolls - Monthly		
			Average Price		% Chn April 2012 / May2012	Average Price		% Chn April 2012 / May2012	Average Price		% Chn April 2012 / May2012
			April 2012	May 2012		April 2012	May 2012		April 2012	May 2012	
<b>Miscellaneous</b>											
Baby cologne	Baby Cheramy Cologne	175 ml	32.03	30.85	-3.70	35.84	33.47	-6.61	28.23	28.23	0.00
Baby diapers	Huggies / Small Size	1 Packet	146.99	147.29	0.20	149.52	150.02	0.33	144.47	144.56	0.06
Baby lotion	Johnson & Johnson Baby	200 MI, bottle	36.46	36.23	-0.61	36.00	36.03	0.08	36.92	36.44	-1.29
Body lotion	Nivea Lotion	200 MI	41.46	41.59	0.32	44.69	44.69	0.00	38.23	38.49	0.69
Body lotion	Enchanteaur Lotion	200 MI	37.35	37.16	-0.52	36.61	36.52	-0.24	38.10	37.80	-0.79
Cologne	Splash	200 MI	26.33	26.27	-0.24	24.55	24.67	0.50	28.11	27.86	-0.89
Cologne	Loviline	175 ml	26.96	26.76	-0.73	27.65	27.06	-2.12	26.26	26.46	0.73
Facial cream	Fair & Lovely / Facial Crea	25 Gram	22.53	22.46	-0.32	24.03	23.64	-1.64	21.02	21.27	1.19
Hair cream	Max	175 ml	34.35	34.29	-0.16	34.99	35.02	0.10	33.70	33.56	-0.43
Hair cream	Gatsby	175 ml	23.92	24.02	0.44	22.81	22.81	0.00	25.03	25.24	0.83
Hair oil	Bertolli	100 MI,bottle	27.08	26.95	-0.46	25.90	25.65	-0.96	28.25	28.25	0.00
Haircut-female	Female Hair Cut	Per Person	88.79	88.79	0.00	161.33	161.33	0.00	16.25	16.25	0.00
Haircut-men	Male Hair Cut	Per Person	36.75	36.75	0.00	59.75	59.75	0.00	13.75	13.75	0.00
Sanitary pads	Stay Free	1 Packet	15.40	15.40	0.00	16.28	16.28	0.00	14.52	14.52	0.00
Sanitary pads	Riaa	1 Packet	14.97	15.09	0.80	13.87	14.07	1.50	16.07	16.10	0.20
Shampoo	Emerone	200 MI	26.94	26.94	0.01	25.81	25.77	-0.17	28.07	28.12	0.17
Shampoo	Head & shoulders	200 MI	39.14	38.41	-1.86	38.69	38.28	-1.05	39.60	38.55	-2.65
Shampoo	Pantene Pro vitamin	200 MI	37.05	36.88	-0.45	36.71	36.38	-0.91	37.38	37.38	0.00
Soap	Lux Soap	100 Gram	6.20	6.34	2.34	6.70	6.85	2.27	5.70	5.83	2.41
Toothpaste	Aqua fresh,	50 MI	15.92	16.36	2.73	15.22	15.87	4.25	16.62	16.84	1.34
Toothpaste	Colgate	50 MI	14.74	14.90	1.08	14.36	14.37	0.10	15.13	15.44	2.00

**Annex 2: Average annual Prices of of selected Items, CPI National, Male' & Atolls, May 2012**

Description	Specification	Unit	National - Annualized			Male' - Annualized			Atolls - Annualized		
			Average 12 monthly price			Average 12 monthly price			Average 12 monthly price		
			June 2010- May 2011	June 2011- May 2012	% Chn	June 2010- May 2011	June 2011- May 2012	% Chn	June 2010- May 2011	June 2011- May 2012	% Chn
<b>Food</b>											
Aracanut	Raw Aracanut / Uncut / Loose	1 kg	54.88	102.30	86.38	51.77	100.01	93.17	58.00	104.58	80.32
Baby food - cereal	Nestum / Wheat & Honey	250 Gram / Tin	38.02	46.67	22.74	37.71	47.63	26.33	38.34	45.71	19.21
Baby food - cereal	Promina / Banana	250 Gram / Packet	17.65	20.19	14.39	16.88	19.76	17.03	18.41	20.62	11.97
Baby milk powder	Lactogen	450 Gram, tin	68.02	74.34	9.30	64.97	72.12	10.99	71.06	76.57	7.75
Baby milk powder	Anface	450 Gram / Tin	129.28	170.28	31.71	130.80	169.10	29.28	127.76	171.46	34.20
Baby milk powder	S.M.A / Progress	450 Gram / Tin	112.97	125.50	11.10	109.87	122.81	11.78	116.07	128.20	10.45
Beans	Fresh Beans	1 kg	56.96	61.20	7.46	51.00	56.16	10.12	62.92	66.25	5.30
Biscuits	Cream Cracker, Khong Guan	200 gram, packet	9.72	12.61	29.81	9.41	12.49	32.64	10.02	12.74	27.15
Biscuits	Marie Biscuit	400 Gram	17.01	21.67	27.39	15.78	20.78	31.69	18.24	22.56	23.68
Bread	Small Bread	1 Piece	10.09	12.12	20.17	10.57	12.43	17.56	9.61	11.82	23.03
Bread	Large	1 Piece	17.52	19.40	10.70	20.73	23.25	12.15	14.32	15.55	8.61
Bread spread	Chocolate Crumpy	225 Gram	37.60	40.80	8.52	36.47	38.82	6.46	38.73	42.78	10.46
Butter bun	butter buns / Packed	1 Piece	3.19	4.40	37.86	3.58	4.08	13.87	2.80	4.72	68.52
Cabbage	Fresh Cabbage	1 kg	31.15	33.47	7.44	28.80	30.10	4.50	33.49	36.83	9.97
Candy	Solano	1 Piece / 25 Gram	0.39	0.43	10.79	0.44	0.42	-4.01	0.34	0.44	30.13
Canned baked beans	Baked Beans / Canned	400 Gram	11.43	13.90	21.59	11.15	13.63	22.25	11.71	14.17	20.96
Canned mixed fruits	Canned Mixed Fruit / Small	398 Gram	25.89	29.90	15.50	26.16	29.60	13.14	25.62	30.21	17.92
Canned pine Apple	Canned Pine Apple	567 Gram	15.57	22.53	44.70	15.29	21.90	43.25	15.85	23.15	46.09
Carrot	Fresh Carrot	1 kg	31.07	33.55	7.99	26.83	28.69	6.94	35.31	38.42	8.79
Chicken sausage	Chicken Sausage / Packed	300 Gram	20.44	23.09	12.98	17.29	21.43	23.94	23.58	24.75	4.95
Chilli powder	Chillie Powder / Packed Locally	50 Gram	5.39	7.13	32.22	5.11	6.58	28.74	5.67	7.68	35.37
Cigarette	Marlboro	20 Piece / 1 Pack	19.89	31.18	56.72	19.84	31.40	58.31	19.95	30.95	55.13
Cigarette	Benson	20 Piece / 1 Pack	19.21	28.98	50.85	18.94	31.40	65.85	19.49	26.55	36.27
Coffee	Nescafe, Cafe' soluble coffee / Canned	50 Gram	31.51	40.09	27.22	31.39	40.54	29.15	31.64	39.65	25.31
Coke	Dubai coke / Canned	300 MI	7.46	10.52	41.16	7.24	10.48	44.82	7.67	10.57	37.72
Coke	Coca Cola / Large Bottle	1500 MI	24.85	30.50	22.75	24.36	29.28	20.20	25.34	31.73	25.19
Condensed milk	Double Peach	397Gram, tin	11.93	15.37	28.85	11.61	14.97	28.89	12.25	15.78	28.81
Condensed milk	Cow Bell	397 Gram / Tin	11.44	14.82	29.60	10.92	14.78	35.37	11.95	14.86	24.33
Cooking oil	Bemoli Oil	2 Ltr	50.19	67.62	34.73	49.21	64.71	31.48	51.16	70.53	37.85
Cooking oil	Sun Flower Oil	2 Ltr	78.54	99.01	26.07	74.13	101.59	37.04	82.94	96.43	16.26
Corn flake	Kellogg's / Wheat and Honey	300 Gram	43.91	36.84	-16.11	42.83	42.88	0.13	45.00	30.80	-31.56
Curry powder	Curry Powder / Antelope brand / Canned	340 Gram	28.28	39.29	38.94	30.82	40.18	30.35	25.73	38.40	49.23
Curry powder	Fish curry powder / Packed locally	50 Gram	5.34	6.97	30.39	5.14	6.60	28.44	5.55	7.34	32.19
Curry powder	Chicken curry powder / Packed locally	50 Gram	5.29	6.97	31.80	5.12	6.70	30.90	5.45	7.23	32.65
Dairy milk	Dutch Lady / Milk Pack / Small	250 MI	7.28	9.88	35.76	7.16	9.58	33.88	7.40	10.18	37.57
Dhal	Yellow Colored Dhal	1 kg	44.47	49.28	10.83	44.20	47.57	7.62	44.73	51.00	14.00
Dried Chilli	Dried Chilli (Hikimirus) / Loose	1 kg	56.15	81.69	45.49	53.36	82.86	55.28	58.93	80.51	36.63
Egg	Chicken egg / Imported	1 Piece	1.57	1.82	16.14	1.52	1.73	13.52	1.62	1.92	18.61
Frozen beef	Frozen Beef	1 kg	54.89	65.41	19.16	49.05	66.61	35.79	60.73	64.21	5.73
Frozen chicken	Frozen chicken / Whole chicken / Pre packed	1 kg	42.48	57.76	35.96	38.92	54.96	41.21	46.04	60.55	31.53
Garlic	Garlic	100 Gram	7.29	5.63	-22.73	7.43	4.25	-42.82	7.15	7.01	-1.84
Ginger	Ginger	100 Gram	6.44	5.64	-12.39	5.70	4.11	-28.02	7.18	7.18	0.03
Green chilli	Green Chilli / Imported	100 Gram	11.49	15.75	37.13	9.56	7.47	-21.83	13.42	24.03	79.13
Jam	Tova Brand / Bottle	450 Gram	22.23	24.60	10.66	22.38	24.33	8.68	22.07	24.87	12.66
Juice-Foster Clark	Foster Clark / Powdered Juice / Bottled	750 Gram	55.31	65.32	18.09	54.99	64.88	17.99	55.64	65.76	18.18
Juice-Sun quick	Sun quick / Orange Juice / Bottled	840 MI	58.34	71.00	21.70	56.87	70.52	24.00	59.81	71.47	19.51
lemon	Imported lemon	1 Piece	1.94	2.14	10.10	1.88	2.10	11.91	2.01	2.18	8.41
Margarine	Daisy brand tub / Small	250 Gram	20.30	25.99	28.00	20.56	25.81	25.54	20.05	26.17	30.52
Milk powder	Coast	1800 Gram, tin	206.42	260.19	26.04	203.98	251.96	23.52	208.87	268.41	28.51
Milk powder	Anchor Milk	1800 Gram / Tin	211.28	249.92	18.29	209.50	272.54	30.09	213.05	227.31	6.69
Milk powder	Nido	1800 Gram / Tin	199.65	260.52	30.49	199.14	264.66	32.90	200.16	256.39	28.09
Milo	Nestle Milo Powder / Canned	400 Gram	54.54	78.13	43.25	55.13	80.78	46.52	53.95	75.47	39.90
Noodles	Mamee Noodles / Packet	85 Gram	3.74	4.54	21.40	3.54	4.16	17.58	3.94	4.92	24.83
Onion	Imported Onion	1 kg	20.63	15.93	-22.79	19.08	14.34	-24.85	22.18	17.51	-21.02
Orange	Fresh Orange	1 Piece	4.14	4.43	7.01	3.92	3.87	-1.38	4.35	4.99	14.56
Salt	Fine Salt / Packed	500 Gram	4.87	5.32	9.22	4.67	5.10	9.18	5.07	5.54	9.25
Sauce	Tomato Sauce / life Brand	320 Gram / Bottled	10.57	12.93	22.33	10.26	13.33	29.98	10.88	12.52	15.11
Sauce	Chillie Sauce / life Brand	335 Gram / Bottled	11.25	14.08	25.13	11.34	15.04	32.63	11.17	13.13	17.53
Sauce	Chillie & Garlic Sauce / life Brand	320 Gram / Bottled	12.15	14.93	22.85	12.34	15.88	28.74	11.97	13.97	16.77
Sweet short-eats	Foni folhi	1 Piece	1.89	2.23	18.15	2.00	2.24	12.07	1.78	2.22	25.00
Tea leaves-tea bag	Today's Taste / 100 tea bag	200 Gram	25.02	33.11	32.31	25.22	33.35	32.23	24.83	32.87	32.38
Tea leaves-tea bag	Melesna / 100 tea bag	200 Gram	25.68	35.47	38.16	26.43	39.54	49.60	24.92	31.40	26.02
Tea leaves-tea bag	Akbar / 100 tea bag	200 Gram	25.08	35.32	40.82	25.35	34.71	36.95	24.81	35.92	44.77
Tomato	Fresh Tomato	1kg	30.95	33.96	9.71	30.90	33.47	8.32	31.01	34.46	11.10
Tomato paste	Tomato Paste / Small can	70 Gram	2.71	2.98	10.01	2.49	2.83	13.75	2.93	3.13	6.83
<b>Fish</b>											
Canned fish in brine	Felivaru Canned Fish / Chunk in Brine	185 Gram	14.16	17.03	20.29	14.16	16.98	19.90	14.16	17.09	20.67
Canned fish in oil	Felivaru canned fish / Chunk in Oil	185 Gram	16.02	18.70	16.73	15.72	18.17	15.61	16.32	19.23	17.81
Other tuna	Other Tuna / Latti	1 kg	94.77	61.82	-34.77	94.77	61.82	-34.77	-	-	-
Reef fish	Reef Fish / Maaniya mas	1 kg	17.67	21.56	22.01	17.67	21.56	22.01	-	-	-
Skipjack tuna	Godha / Kalhubilamas	1 kg	93.03	61.97	-33.39	93.03	61.97	-33.39	-	-	-
Smoked fish	Smoked Fish (Valhoamas) / Loose	1 kg	79.17	122.68	54.97	64.16	127.03	97.97	94.17	118.33	25.66
<b>Clothing and Footwear</b>											

Description	Specification	Unit	National - Annualized			Male' - Annualized			Atolls - Annualized		
			Average 12 monthly price			Average 12 monthly price			Average 12 monthly price		
			June 2010- May 2011	June 2011- May 2012	% Chn	June 2010- May 2011	June 2011- May 2012	% Chn	June 2010- May 2011	June 2011- May 2012	% Chn
Dress material	Most often sold material / Plane / Faatufulhaa	1 Muh	24.58	30.60	24.50	25.08	32.93	31.28	24.07	28.27	17.44
Mens jeans	Mend's Jeans / Most Sold Material	1 Piece	218.02	253.11	16.09	222.08	274.49	23.60	213.96	231.73	8.31
Mens shirt	Men T-Shirt / Most Sold material	1 Piece	162.89	200.55	23.12	169.65	206.23	21.56	156.13	194.88	24.82
Mens trousers	Men's Trousers / Long	1 Piece	201.21	227.30	12.97	184.72	224.34	21.45	217.69	230.27	5.78
Mens t-shirt	Men Shirt / Most Sold Brand	1 Piece	153.85	186.67	21.34	157.64	176.21	11.78	150.05	197.14	31.38
School shoes	School Shoes/ Girl / Most recently sold	1 Pair	149.12	172.79	15.87	138.47	178.06	28.59	159.76	167.51	4.85
School uniform	School Uniform / Boys / Medium size 14	1 Piece	54.70	117.39	114.62	60.79	117.16	92.72	48.60	117.63	142.03
Sport shoes	Diadora / Indoor tennis shoes / Men	1 Pair	332.70	377.49	13.46	272.50	327.50	20.18	392.91	427.49	8.80
Tailoring national dress	National dress / Unstrech Material	1 Piece	117.60	126.56	7.62	140.00	147.50	5.36	95.21	105.63	10.94
Tailoring women's blouse	Sewing of blouse	1 Piece	62.12	73.33	18.04	70.21	75.00	6.82	54.03	71.65	32.62
Women's jeans	Women's Jeans / Fade	1 Piece	188.59	201.67	6.93	203.89	214.91	5.41	173.30	188.43	8.73
Women's sandals	Casual (home-wear)	1 Piece	133.55	161.43	20.87	137.92	177.81	28.93	129.18	145.04	12.27
Women's t-shirt	Ladies T - shirt / Most sold Brand	1 Piece	147.15	166.74	13.31	153.06	187.67	22.61	141.25	145.82	3.24
<b>Housing</b>											
Battery	"D" Size Battery / 555 Brand	1 Piece	3.13	3.64	16.37	3.00	3.49	16.45	3.26	3.79	16.29
Cement	Cement bag	50 kg	88.90	112.13	26.13	81.00	104.64	29.18	96.79	119.61	23.58
Chair	Plastic Chair / large / without handle	1 Piece	127.48	168.74	32.37	130.00	142.91	9.93	124.96	194.57	55.70
Cooking gas	Cooking gas / Excluding Transport cost	13 Kg	278.65	335.73	20.48	303.83	385.00	26.71	253.47	286.46	13.01
Fan	Electric fan (Ceiling) / Usha Brand / 43 inches	1 Piece	461.52	513.02	11.16	453.44	499.31	10.12	469.60	526.74	12.17
Glasses	Plain Glass / Medium Size	1 Piece	6.10	7.96	30.51	5.87	7.36	25.35	6.32	8.56	35.30
Insecticides	Insecticides / Mosfly Brand / Small Bottle	400 ml	33.84	42.60	25.89	32.49	41.22	26.88	35.19	43.97	24.97
Iron	Electric Iron / Phillip brand / 1000 V	1 Piece	248.30	302.28	21.74	228.61	255.83	11.91	267.98	348.72	30.13
Kerosene oil	Kerosene oil	1 Ltr	12.60	16.33	29.62	11.79	16.04	36.03	13.41	16.62	23.98
Linoleum	Aadhaige Tharafaalu (linoleum)	1 Feet	9.27	12.99	40.15	8.88	14.74	66.04	9.67	11.25	16.38
Paint	Wall Paint	5 litre	217.78	159.54	-26.75	170.92	185.68	8.64	264.65	133.39	-49.60
Plywood	3 mm	1 Piece	113.65	125.24	10.21	113.76	137.46	20.83	113.53	113.03	-0.44
Refrigerator	Forest free Refrigerator / 50 kg/ Hitachi brand	1 Piece	4690.44	5720.47	21.96	4368.00	5753.74	31.72	5012.88	5687.20	13.45
Roofing sheet	0.6 mm / 1 feet	1 Piece	23.65	28.75	21.54	26.06	27.73	6.38	21.25	29.77	40.13
Washing power	B 29 Brand Washing powder Pack	1 Kg	21.94	25.97	18.34	18.96	22.08	16.41	24.92	29.86	19.81
<b>Health</b>											
Chest x-ray	Chest x-ray	Per test	69.06	104.11	50.77	109.36	145.28	32.84	28.75	62.95	118.94
Diegen	Diegen / 200 ml	1 Bottle	24.66	32.64	32.35	26.18	35.79	36.69	23.14	29.49	27.44
Doctor's consulting fee-gene consultation fee / General Doctor		Per Patient	85.94	94.53	10.00	81.25	89.06	9.62	90.63	100.00	10.34
Forcevel	Forcevel / 500 mg	1 Tablet	3.14	3.59	14.54	3.45	3.92	13.47	2.82	3.27	15.86
Helibo orange	Helibo Orange / 200 ml	1 Bottle	37.22	48.80	31.10	42.30	56.14	32.72	32.14	41.45	28.95
Vicks balm	Vicks Balm / 19 Gram	1 Bottle	10.42	12.69	21.76	10.75	13.29	23.64	10.09	12.08	19.75
Vitamin C	Vitamin C / 500 mg	1 Tablet	0.79	0.89	12.12	0.76	0.99	30.66	0.82	0.78	-5.00
<b>Restaurant, cafés and hotels</b>											
Meals	4 roshi / 1fish curry / 1 black tea / 1 dhufun	Per person	17.08	22.77	33.29	17.08	22.77	33.29	-	-	-
Meals	4 roshi / 1 chicken curry / 1 black tea / 1 dhufun	Per person	22.75	37.69	65.69	22.75	37.69	65.69	-	-	-
Pizza	Tuna Mushroom	whole pizza	65.97	84.23	27.68	65.97	84.23	27.68	-	-	-
Restaurant meals	Fish & Chips	1 plate	47.29	56.43	19.32	47.29	56.43	19.32	-	-	-
Restaurant meals	Nasi Goreng	1 plate	51.00	61.84	21.25	51.00	61.84	21.25	-	-	-
<b>Transport</b>											
Cleaning of motorcycle	Full cycle	Per vehicle	70.00	79.21	13.16	70.00	79.21	13.16	-	-	-
Domestic airfare	Male/Gan/Male'	Per Person / Adult	2849.33	3310.55	16.19	2849.33	3310.55	16.19	-	-	-
Domestic airfare	Male/Hanimadhoo/Male'	Per Person / Adult	2207.67	2586.10	17.14	2207.67	2586.10	17.14	-	-	-
Domestic airfare	Male/Kade'dhoo/ Male'	Per Person / Adult	2528.50	2948.75	16.62	2528.50	2948.75	16.62	-	-	-
Domestic airfare	Male/Kah'dhoo/male'	Per Person / Adult	2207.67	2586.10	17.14	2207.67	2586.10	17.14	-	-	-
International airfare	Male/Colombo/male'	Per Person	4087.79	5255.64	28.57	4087.79	5255.64	28.57	-	-	-
Motorcycle	Honda Wave 125 I	1 Piece	44609.92	54551.64	22.29	45408.33	54110.50	19.16	43811.50	54992.78	25.52
Motorcycle	Honda Wave 125 H	1 Piece	40963.89	48856.47	19.27	40108.33	47790.67	19.15	41819.44	49922.28	19.38
Motorcycle	Honda Wave 125 R	1 Piece	40025.00	47790.67	19.40	-	-	-	40025.00	47790.67	19.40
Petrol	Petrol	1 Ltr	12.11	16.14	33.30	11.96	16.01	33.81	12.25	16.27	32.80
Taxi fare	Taxi Fare	Per trip	20.78	22.21	6.89	20.00	20.00	0.00	21.56	24.43	13.29
<b>Recreation</b>											
Cable TV charges	Cable Charges	Per Month	217.97	228.21	4.70	250.00	250.00	0.00	185.94	206.41	11.01
Color box	Swan Brand / Small Size / 12 Color	1 Box	17.30	19.07	10.25	20.45	23.32	14.02	14.14	14.82	4.80
Glaze paper	Glaze Paper	1 Piece	1.88	2.17	15.52	1.26	1.69	34.81	2.50	2.64	5.81
Monitor book	Exercise Book / 200 Pages	1 Book	12.92	15.16	17.29	13.76	15.51	12.74	12.09	14.80	22.46
Pen	Red leaf Pen	1 Piece	4.76	5.12	7.56	4.66	5.05	8.55	4.87	5.19	6.62
Pen	Faster Pen	1 Piece	4.93	5.26	6.65	4.92	5.27	7.05	4.94	5.25	6.25
<b>Miscellaneous</b>											
Baby cologne	Baby Cheramly Cologne	175 ml	22.39	30.90	38.03	21.47	33.24	54.79	23.30	28.57	22.58
Baby cologne	Johnson & Johnson Cologne	175 ml	21.51	23.99	11.52	20.68	22.01	6.46	22.35	25.96	16.20
Baby diapers	Huggies / Small Size	1 Packet	126.75	144.84	14.27	127.34	144.43	13.42	126.16	145.24	15.13
Baby lotion	Johnson & Johnson Baby Lotion	200 ml, bottle	29.59	34.65	17.08	29.96	34.45	14.98	29.23	34.85	19.23
Baby soap	Johnson Baby Soap	100 Gram	9.23	10.00	8.37	8.34	10.17	21.94	10.13	9.84	-2.80
Body lotion	Nivea Lotion	200 ml	39.22	42.06	7.26	41.43	45.65	10.20	37.01	38.48	3.97
Body lotion	Enchanteur Lotion	200 ml	32.26	34.95	8.31	31.49	34.00	7.99	33.04	35.89	8.62
Cologne	Splash	200 ml	20.07	24.77	23.41	19.42	23.84	22.73	20.72	25.71	24.04
Cologne	Loviline	175 ml	20.76	25.83	24.40	20.93	27.44	31.13	20.60	24.22	17.57
Facial cream	Fair & Lovely / Facial Cream	25 Gram	17.12	20.24	18.18	16.29	19.93	22.32	17.96	20.55	14.43
Hair cream	Max	175 ml	26.65	32.52	22.00	26.65	33.23	24.65	26.65	31.81	19.34
Hair cream	Elite	175 ml	25.45	32.87	29.16	25.26	34.98	38.50	25.65	30.77	19.97
Haircut-female	Female Hair Cut	Per Person	70.45	83.34	18.30	125.00	150.44	20.35	15.90	16.25	2.18

Description	Specification	Unit	National - Annualized			Male' - Annualized			Atolls - Annualized		
			Average 12 monthly price			Average 12 monthly price			Average 12 monthly price		
			June 2010- May 2011	June 2011- May 2012	% Chn	June 2010- May 2011	June 2011- May 2012	% Chn	June 2010- May 2011	June 2011- May 2012	% Chn
			Haircut-men	Male Hair Cut	Per Person	21.49	33.92	57.81	32.36	53.25	64.54
Sanitary pads	Stay Free	1 Packet	12.83	14.85	15.75	12.96	14.90	14.96	12.70	14.80	16.55
Shampoo	Emerone	200 MI	18.41	25.15	36.62	17.08	24.51	43.46	19.74	25.80	30.69
Shampoo	Head & shoulders	200 MI	31.99	38.10	19.11	31.53	39.47	25.18	32.44	36.73	13.20
Shampoo	Pantene Pro vitamin	200 MI	30.70	34.86	13.56	29.33	34.53	17.73	32.07	35.19	9.74
Soap	Lux Soap	100 Gram	4.81	5.58	16.10	4.63	5.71	23.28	4.98	5.45	9.42



**Annex 3: Average month on month prices of of selected Items, CPI National, Male' & Atolls, May 2012**

Description	Specification	Unit	National - Month on Month			Male' - Month on Month			Atolls - Month on Month		
			Average Price			Average Price			Average Price		
			May-11	May-12	% Chn	May-11	May-12	% Chn	May-11	May-12	% Chn
<b>Food</b>											
Apple	Apple	1 Piece	5.47	5.91	8.01	5.28	5.84	10.64	5.67	5.98	5.56
Aracanut	Raw Aracanut / Uncut / Loose	1 kg	69.84	100.28	43.58	70.00	91.46	30.66	69.69	109.09	56.55
Baby food - cereal	Nestum / Wheat & Honey	250 Gram / Tin	42.86	49.83	16.25	43.63	49.60	13.69	42.10	50.07	18.91
Baby food - cereal	Promina / Banana	250 Gram / Pa	17.60	21.01	19.36	17.07	20.56	20.45	18.14	21.47	18.35
Baby milk powder	Lactogen	450 Gram, tin	67.77	75.24	11.03	67.56	73.55	8.87	67.98	76.94	13.18
Baby milk powder	Anflace	450 Gram / Tir	134.65	172.42	28.05	136.80	169.83	24.15	132.50	175.00	32.08
Baby milk powder	S.M.A / Progress	450 Gram / Tir	115.31	126.00	9.27	106.25	123.05	15.81	124.38	128.96	3.69
Banana	Bonthiraiy	1 Piece	1.64	1.89	15.17	1.95	2.47	26.81	1.33	1.31	-1.86
Beans	Fresh Beans	1 kg	60.75	51.69	-14.91	56.50	53.38	-5.51	65.00	50.00	-23.08
Biscuits	Cream Cracker, Khong Guan	200 gram, pacl	11.10	13.23	19.16	11.20	13.14	17.35	11.00	13.31	21.01
Biscuits	Marie Biscuit	400 Gram	17.23	23.19	34.65	15.63	22.09	41.34	18.83	24.30	29.10
Bread	Small Bread	1 Piece	11.30	12.56	11.11	12.31	12.54	1.81	10.29	12.58	22.22
Bread	Large	1 Piece	19.31	19.68	1.91	23.30	23.25	-0.21	15.32	16.10	5.14
Bread spread	Chocolate Crumpy	225 Gram	38.56	44.69	15.91	35.94	43.85	22.00	41.17	45.53	10.59
Butter bun	butter buns / Packed	1 Piece	4.38	4.34	-0.89	3.97	4.16	4.78	4.79	4.52	-5.60
Cabbage	Fresh Cabbage	1 kg	31.90	33.28	4.33	28.80	33.23	15.38	35.00	33.33	-4.76
Candy	Solano	1 Piece / 25 Gr	0.38	0.38	1.45	0.36	0.31	-13.92	0.39	0.45	15.82
Canned baked beans	Baked Beans / Canned	400 Gram	12.02	14.51	20.67	12.29	14.32	16.58	11.76	14.70	24.94
Canned green peas	Green peas / Processed peas / Canned	440 Gram	8.44	10.77	27.56	8.89	11.54	29.86	8.00	10.00	25.00
Canned mixed fruits	Canned Mixed Fruit / Small	398 Gram	30.06	29.05	-3.35	31.67	28.20	-10.95	28.45	29.90	5.11
Canned pine Apple	Canned Pine Apple	567 Gram	16.20	23.63	45.92	16.00	23.08	44.22	16.39	24.19	47.57
Carrot	Fresh Carrot	1 kg	37.53	29.33	-21.83	35.06	25.34	-27.73	40.00	33.33	-16.67
Chilli powder	Chillie Powder / Packed Locally	50 Gram	5.96	7.35	23.44	5.58	6.90	23.58	6.33	7.81	23.31
Cigarette	Marlboro	20 Piece / 1 Pa	20.86	38.75	85.78	20.83	38.66	85.55	20.88	38.84	86.01
Cigarette	Benson	20 Piece / 1 Pa	20.29	35.44	74.63	20.83	38.66	85.55	19.75	32.22	63.11
Coffee	Nescafe, Cafe' soluble coffee / Canned	50 Gram	34.62	42.10	21.60	34.89	42.00	20.38	34.35	42.20	22.85
Coke	Dubai coke / Canned	300 Ml	8.48	10.86	27.99	8.79	10.95	24.67	8.18	10.76	31.56
Coke	Coca Cola / Large Bottle	1500 Ml	27.24	30.96	13.63	27.50	30.35	10.35	26.98	31.56	16.97
Condensed milk	Double Peach	397Gram, tin	12.80	15.72	22.81	12.30	15.26	24.09	13.29	16.17	21.62
Condensed milk	Cow Bell	397 Gram / Tir	12.56	15.65	24.58	11.57	15.27	31.96	13.56	16.04	18.28
Cooking oil	Bemoli Oil	2 Ltr	66.89	61.44	-8.15	66.08	57.42	-13.11	67.70	65.46	-3.30
Cooking oil	Sun Flower Oil	2 Ltr	84.53	96.14	13.74	87.50	91.51	4.58	81.56	100.77	23.56
Cucumber	Fresh Cucumber	1 kg	22.94	30.05	30.99	28.10	36.94	31.46	17.78	23.16	30.25
Curry powder	Curry Powder / Antelope brand / Canni	340 Gram	32.14	39.63	23.29	31.29	42.47	35.75	33.00	36.79	11.48
Curry powder	Fish curry powder / Packed locally	50 Gram	5.78	7.28	26.13	5.63	6.88	22.30	5.93	7.69	29.77
Curry powder	Chicken curry powder / Packed locally	50 Gram	5.73	7.32	27.84	5.63	7.13	26.76	5.83	7.52	28.89
Dairy milk	Dutch Lady / Milk Pack / Small	250 Ml	7.96	10.17	27.88	7.97	9.70	21.72	7.94	10.65	34.06
Dried Chilli	Dried Chilli (Hikimirus) / Loose	1 kg	59.17	88.19	49.05	60.00	92.48	54.14	58.33	83.89	43.81
Egg	Chicken egg / Imported	1 Piece	1.71	1.68	-1.83	1.71	1.55	-9.09	1.71	1.80	5.41
Frozen beef	Frozen Beef	1 kg	58.18	62.77	7.89	51.36	70.02	36.34	65.00	55.52	-14.59
Frozen chicken	Frozen chicken / Whole chicken / Pre p	1 kg	45.36	54.97	21.17	44.15	49.99	13.22	46.58	59.95	28.70
Garlic	Garlic	100 Gram	10.10	4.59	-54.49	11.15	3.80	-65.94	9.04	5.39	-40.37
Ginger	Ginger	100 Gram	6.53	5.35	-18.10	4.99	3.90	-21.87	8.07	6.80	-15.77
Githeyo Mirus	Dhivehi mirus	1 Piece	2.55	2.76	8.35	2.75	2.62	-4.91	2.35	2.91	23.88
Green chilli	Green Chilli / Imported	100 Gram	12.29	20.05	63.09	6.25	8.19	31.04	18.33	31.90	74.01
Jam	Tova Brand / Bottle	450 Gram	22.69	26.07	14.92	23.00	25.24	9.75	22.38	26.90	20.24
Juice-Foster Clark	Foster Clark / Powdered Juice / Bottled	750 Gram	59.50	67.71	13.80	59.75	66.46	11.23	59.25	68.97	16.40
Juice-Sun quick	Sun quick / Orange Juice / Bottled	840 Ml	62.66	75.42	20.37	62.39	74.98	20.18	62.93	75.87	20.56
lemon	Imported lemon	1 Piece	2.15	2.18	1.49	2.10	2.25	7.11	2.19	2.11	-3.88
Margarine	Daisy brand tub / Small	250 Gram	23.36	28.13	20.42	23.10	27.16	17.57	23.61	29.09	23.21
Milk powder	Coast	1800 Gram, tin	231.08	256.80	11.13	228.75	243.87	6.61	233.42	269.73	15.56
Milk powder	Anchor Milk	1800 Gram / Ti	237.83	259.72	9.20	243.67	278.25	14.19	232.00	241.19	3.96
Milk powder	Nido	1800 Gram / Ti	236.64	270.73	14.40	260.00	267.86	3.02	213.28	273.60	28.28
Milo	Nestle Milo Powder / Canned	400 Gram	64.97	84.14	29.51	68.67	86.14	25.45	61.28	82.14	34.05
Mixed fresh vegetables	Mixed Vegetables	1 kg	44.41	41.39	-6.81	50.60	42.57	-15.87	38.23	40.21	5.17
Noodles	Mamee Noodles / Packet	85 Gram	4.06	4.54	11.81	3.91	4.14	5.67	4.21	4.95	17.50
Onion	Imported Onion	1 kg	17.92	10.41	-41.91	13.73	10.15	-26.07	22.10	10.67	-51.75
Orange	Fresh Orange	1 Piece	5.01	4.91	-2.02	5.31	4.64	-12.46	4.72	5.18	9.71
Potato	Imported Potato	1 kg	13.34	12.72	-4.65	11.95	12.47	4.34	14.73	12.96	-11.96
Rice-Basmati	Basmati Rice / Pre Packed	1 kg	26.61	28.95	8.80	25.25	28.40	12.46	27.98	29.51	5.49
Salt	Fine Salt / Packed	500 Gram	4.97	5.30	6.60	4.83	5.12	6.13	5.11	5.47	7.05
Saltish short-eats	Handulu gulha	1 Piece	1.83	1.42	-22.73	2.00	1.17	-41.67	1.67	1.67	0.00
Sauce	Tomato Sauce / life Brand	320 Gram / Bo	11.04	14.47	31.07	11.00	15.60	41.81	11.08	13.34	20.40
Sauce	Chillie Sauce / life Brand	335 Gram / Bo	12.05	15.44	28.05	12.56	16.66	32.60	11.55	14.21	23.10
Sauce	Chillie & Garlic Sauce / life Brand	320 Gram / Bo	13.07	15.71	20.21	13.67	17.11	25.16	12.47	14.31	14.77
Sweet short-eats	Foni folhi	1 Piece	2.06	2.35	14.49	2.00	2.37	18.67	2.11	2.33	10.53
Tea leaves-loose	Ceylon Tea Leaves ( loose)	1 kg	49.75	49.13	-1.24	45.00	47.12	4.70	54.50	51.15	-6.15

Description	Specification	Unit	National - Month on Month			Male' - Month on Month			Atolls - Month on Month		
			Average Price			Average Price			Average Price		
			May-11	May-12	% Chn	May-11	May-12	% Chn	May-11	May-12	% Chn
Tea leaves-tea bag	Today's Taste / 100 tea bag	200 Gram	27.35	34.92	27.67	26.88	34.56	28.60	27.83	35.28	26.77
Tea leaves-tea bag	Melesna / 100 tea bag	200 Gram	32.25	37.80	17.20	33.00	44.93	36.15	31.50	30.67	-2.65
Tea leaves-tea bag	Akbar / 100 tea bag	200 Gram	28.11	36.92	31.31	29.25	35.42	21.08	26.98	38.42	42.41
Tomato	Fresh Tomato	1Kg	30.05	26.15	-12.97	30.10	31.98	6.26	30.00	20.32	-32.26
Tomato paste	Tomato Paste / Small can	70 Gram	2.80	3.07	9.88	2.64	3.01	14.01	2.95	3.13	6.18
<b>Fish</b>											
Canned fish in brine	Felivaru Canned Fish / Chunk in Brine	185 Gram	15.51	17.59	13.41	15.82	17.29	9.31	15.21	17.90	17.67
Canned fish in oil	Felivaru canned fish / Chunk in Oil	185 Gram	17.31	18.93	9.34	16.88	18.22	7.99	17.75	19.63	10.61
Other tuna	Other Tuna / Latti	1 kg	39.83	61.82	55.21	39.83	61.82	55.21	-	-	-
Reef fish	Reef Fish / Maaniya mas	1 kg	28.59	21.56	-24.59	28.59	21.56	-24.59	-	-	-
Skipjack tuna	Godha / Kalhubilamas	1 kg	56.88	61.97	8.95	56.88	61.97	8.95	-	-	-
Smoked fish	Smoked Fish (Valhoamas) / Loose	1 kg	108.59	141.18	30.02	87.17	132.36	51.84	130.00	150.00	15.38
<b>Clothing and Footwear</b>											
Dress material	Most often sold material / Plane / Faat 1 Muh		26.75	34.27	28.11	26.00	39.04	50.14	27.50	29.50	7.27
Mens jeans	Mend's Jeans / Most Sold Material	1 Piece	236.04	263.52	11.64	243.33	295.43	21.41	228.75	231.61	1.25
Men's sandals	Most recently sold brand	1 Pair	203.13	237.82	17.08	145.00	196.83	35.75	261.25	278.82	6.72
Mens shirt	Men T-Shirt / Most Sold material	1 Piece	189.38	211.76	11.82	180.00	233.20	29.56	198.75	190.32	-4.24
Mens trousers	Men's Trousers / Long	1 Piece	221.46	240.81	8.74	220.00	229.60	4.36	222.92	252.03	13.06
Mens t-shirt	Men Shirt / Most Sold Brand	1 Piece	176.15	203.61	15.59	175.00	194.97	11.41	177.29	212.24	19.71
School shoes	School Shoes/ Girl / Most recently sold 1 Pair		151.88	182.96	20.47	145.00	188.50	30.00	158.75	177.42	11.76
Tailoring national dress	National dress / Unstrech Material	1 Piece	118.33	127.79	7.99	140.00	150.00	7.14	96.67	105.58	9.22
Women's jeans	Women's Jeans / Fade	1 Piece	198.33	214.77	8.29	201.67	227.83	12.98	195.00	201.71	3.44
Women's sandals	Casual (home-wear)	1 Piece	138.75	181.80	31.03	145.00	219.73	51.54	132.50	143.87	8.58
Women's t-shirt	Ladies T - shirt / Most sold Brand	1 Piece	154.58	169.14	9.42	166.67	191.03	14.62	142.50	147.25	3.34
<b>Housing</b>											
Battery	"D" Size Battery / 555 Brand	1 Piece	3.19	3.81	19.28	3.00	3.72	23.89	3.39	3.90	15.20
Bed sheet	Single Bed sheet / Ordinary brand	1 Piece	62.92	73.31	16.51	42.50	63.85	50.24	83.33	82.76	-0.69
Cement	Cement bag	50 kg	90.17	122.33	35.67	82.50	122.00	47.88	97.83	122.67	25.38
Chair	Plastic Chair / large / without handle	1 Piece	125.63	196.54	56.45	130.00	175.00	34.62	121.25	218.08	79.86
Cooking gas	Cooking gas / Excluding Transport cost 13 Kg		325.00	340.63	4.81	390.00	390.00	0.00	260.00	291.25	12.02
Fan	Electric fan (Ceiling) / Usha Brand / 43 i 1 Piece		463.33	533.63	15.17	445.00	514.51	15.62	481.67	552.74	14.76
Glasses	Plain Glass / Medium Size	1 Piece	7.33	8.21	11.99	7.50	7.62	1.57	7.17	8.81	22.89
Insecticides	Insecticides / Mosfly Brand / Small Bott 400 Ml		34.47	44.63	29.50	30.60	43.41	41.86	38.33	45.86	19.63
Kerosene oil	Kerosene oil	1 Ltr	13.76	17.04	23.84	12.00	16.56	38.00	15.52	17.52	12.89
Light tube	Fluorescent tube / 2 feet / White Color 1 Piece		12.62	15.26	20.99	10.67	15.97	49.69	14.57	14.56	-0.03
Linoleum	Aadhaige Tharafaalu (linoleum)	1 Feet	9.25	14.22	53.68	8.50	16.43	93.29	10.00	12.00	20.00
Paint	Wall Paint	5 litre	152.50	166.66	9.29	175.00	198.53	13.44	130.00	134.80	3.69
Plywood	3 mm	1 Piece	120.00	140.33	16.94	126.67	166.82	31.70	113.33	113.83	0.44
Refrigerator	Forest free Refrigerator / 50 kg/ Hitact 1 Piece		4,702.33	6,905.18	46.85	4,432.00	7,546.31	70.27	4,972.67	6,264.05	25.97
Roofing sheet	0.6 mm / 1 feet	1 Piece	24.75	32.95	33.14	28.00	30.24	8.00	21.50	35.67	65.89
Sofa Set	Sofa set / Plywood with sponge cushion 1 Piece		5,690.00	7,521.00	32.18	4,950.00	8,427.00	70.24	6,430.00	6,615.00	2.88
Washing power	Soklin Brand Washing powder Pack	1 Kg	25.71	30.67	19.28	19.67	23.47	19.33	31.76	37.88	19.25
Washing power	B 29 Brand Washing powder Pack	1 Kg	22.08	28.08	27.15	19.00	23.78	25.18	25.17	32.37	28.63
Water pump	Pedroller Water Pump / 1 inches	1 Piece	2,696.83	3,160.79	17.20	2,950.00	3,933.00	33.32	2,443.67	2,388.58	-2.25
<b>Health</b>											
Diegen	Diegen / 200 ml	1 Bottle	23.97	36.19	50.97	25.00	39.29	57.15	22.94	33.09	44.23
Forcevel	Forcevel / 500 mg	1 Tablet	3.54	3.74	5.55	4.00	4.00	0.00	3.08	3.48	12.76
Helibo orange	Helibo Orange / 200 ml	1 Bottle	43.06	53.58	24.42	48.00	58.75	22.40	38.13	48.40	26.96
Panadol	Panadol / 500 mg	1 Tablet	0.43	0.48	10.09	0.50	0.50	0.00	0.36	0.45	23.97
Vicks balm	Vicks Balm / 19 Gram	1 Bottle	10.50	14.07	34.03	11.00	14.83	34.85	10.00	13.31	33.13
Vitamin C	Vitamin C / 500 mg	1 Tablet	1.37	0.91	-33.43	1.00	1.00	0.00	1.74	0.83	-52.63
<b>Restaurant, cafés and hotels</b>											
Meals	4 roshi / 1fish curry / 1 black tea / 1 dh Per person		18.00	23.32	29.56	18.00	23.32	29.56	-	-	-
Meals	4 roshi / 1 chicken curry / 1 black tea /:Per person		39.00	39.00	0.00	39.00	39.00	0.00	-	-	-
Pizza	Tuna Mushroom	whole pizza	78.33	90.03	14.94	78.33	90.03	14.94	-	-	-
Restaurant meals	Fish & Chips	1 plate	50.00	62.87	25.73	50.00	62.87	25.73	-	-	-
Restaurant meals	Nasi Goreng	1 plate	55.00	66.67	21.21	55.00	66.67	21.21	-	-	-
<b>Transport</b>											
Domestic airfare	Male'/Gan/Male'	Per Person / A	3,206.00	3,392.00	5.80	3,206.00	3,392.00	5.80	-	-	-
Domestic airfare	Male'/Hanimadhoo/Male'	Per Person / A	2,506.00	2,650.00	5.75	2,506.00	2,650.00	5.75	-	-	-
Domestic airfare	Male'/Kade'dhoo/ Male'	Per Person / A	2,856.00	3,021.00	5.78	2,856.00	3,021.00	5.78	-	-	-
Domestic airfare	Male'/Kah'dhoo/male'	Per Person / A	2,506.00	2,650.00	5.75	2,506.00	2,650.00	5.75	-	-	-
International airfare	Male'/Colombo/male'	Per Person	5,000.50	5,498.93	9.97	5,000.50	5,498.93	9.97	-	-	-
Motorcycle	Honda Wave 125 H	1 Piece	45,650.00	51,551.33	12.93	44,800.00	50,456.00	12.63	46,500.00	52,646.67	13.22
Motorcycle	Honda Wave 125 R	1 Piece	23,325.00	26,185.38	12.26	1,850.00	1,914.75	3.50	44,800.00	50,456.00	12.63
Petrol	Petrol	1 Ltr	15.58	16.64	6.79	16.19	16.52	2.04	14.98	16.76	11.94
<b>Recreation</b>											
CD player	CD Player / Phillips Brand	1 Piece	1,037.25	961.34	-7.32	1,224.50	1,141.24	-6.80	850.00	781.43	-8.07
Glaze paper	Glaze Paper	1 Piece	1.76	2.28	29.76	1.29	1.79	39.22	2.23	2.78	24.31

Description	Specification	Unit	National - Month on Month			Male' - Month on Month			Atolls - Month on Month		
			Average Price			Average Price			Average Price		
			May-11	May-12	% Chn	May-11	May-12	% Chn	May-11	May-12	% Chn
Monitor book	Exercise Book / 200 Pages	1 Book	13.08	16.12	23.26	12.40	17.08	37.71	13.75	15.16	10.23
Pen	Faster Pen	1 Piece	5.05	5.63	11.55	5.00	5.90	18.00	5.09	5.36	5.21
Recordable CD	Recordable CD / Blank CD	1 Piece	4.28	4.97	16.27	3.50	4.81	37.35	5.05	5.13	1.67
<b>Miscellaneous</b>											
Baby cologne	Baby Cheramyl Cologne	175 ml	28.77	30.85	7.23	29.67	33.47	12.83	27.88	28.23	1.26
Baby diapers	Huggies / Small Size	1 Packet	131.39	147.29	12.10	135.00	150.02	11.12	127.78	144.56	13.13
Baby lotion	Johnson & Johnson Baby Lotion	200 Ml, bottle	31.72	36.23	14.23	31.88	36.03	13.03	31.57	36.44	15.44
Baby soap	Johnson Baby Soap	100 Gram	9.80	10.14	3.43	9.86	10.68	8.34	9.75	9.60	-1.53
Body lotion	Enchanteur Lotion	200 Ml	30.34	37.16	22.47	27.43	36.52	33.15	33.25	37.80	13.67
Cologne	Splash	200 Ml	20.95	26.27	25.36	19.88	24.67	24.13	22.03	27.86	26.46
Cologne	Loviline	175 ml	21.28	26.76	25.74	21.83	27.06	23.94	20.73	26.46	27.63
Facial cream	Fair & Lovely / Facial Cream	25 Gram	18.76	22.46	19.68	16.67	23.64	41.84	20.86	21.27	1.98
Hair cream	Max	175 ml	29.85	34.29	14.88	30.43	35.02	15.10	29.27	33.56	14.64
Hair cream	Elite	175 ml	30.58	34.63	13.25	32.40	36.57	12.86	28.75	32.69	13.70
Hair cream	Gatsby	175 ml	21.27	24.02	12.93	17.50	22.81	30.31	25.04	25.24	0.78
Haircut-men	Male Hair Cut	Per Person	24.79	36.75	48.24	38.33	59.75	55.87	11.25	13.75	22.22
Sanitary pads	Stay Free	1 Packet	14.42	15.40	6.78	13.80	16.28	17.97	15.04	14.52	-3.49
Shampoo	Emerone	200 Ml	21.17	26.94	27.25	20.57	25.77	25.25	21.78	28.12	29.13
Shampoo	Head & shoulders	200 Ml	32.90	38.41	16.74	33.25	38.28	15.13	32.56	38.55	18.39
Shampoo	Pantene Pro vitamin	200 Ml	30.76	36.88	19.88	28.40	36.38	28.08	33.13	37.38	12.84
Soap	Lux Soap	100 Gram	4.77	6.34	32.80	4.61	6.85	48.51	4.94	5.83	18.12
Toothpaste	Colgate	50 Ml	12.20	14.90	22.20	11.33	14.37	26.82	13.06	15.44	18.19

	Consumer Price Index - CPI ( June 2004 =100)																		% change in Consumer Price Index - CPI																	
	Total	Total Excluding Fish	1. Food and beverages Including Fish	Food and beverages Excluding Fish	1.1 Fish	2. Tobacco	3. Clothing & footwear	4. Housing, water, electricity, gas & other fuels	Actual rentals for housing	5. Furnishing, household equipments & routine maintenance of	6. Health	7. Transport	8. Communication	9. Recreation & culture	10. Education	11. Hotels, cafes & restaurants	12. Miscellaneous goods & services	13. Religious activity	Total	Total Excluding Fish	Food and beverages Including Fish	Food and beverages Excluding Fish	Fish	Tobacco	Clothing & footwear	Housing, water, electricity, gas & other fuels	Actual rentals for housing	Furnishing, household equipments & routine maintenance of	Health	Transport	Communication	Recreation & culture	Education	Hotels, cafes & restaurants	Miscellaneous goods & services	Religious activity
Weights	100.00	95.44	33.31	28.75	4.56	2.76	5.96	19.48	7.17	5.30	5.42	5.07	5.83	4.94	3.15	0.77	7.92	0.11	100.00	95.44	33.31	28.75	4.56	2.76	5.96	19.48	7.17	5.30	5.42	5.07	5.83	4.94	3.15	0.77	7.92	0.11
2009	132.09	132.12	150.02	152.96	131.51	115.29	112.23	136.55	143.81	134.97	142.90	149.46	65.87	93.99	135.05	141.33	116.65	100.00	3.98	4.98	1.48	3.90	-13.35	-2.09	2.98	7.57	14.29	9.64	2.54	0.47	-0.46	3.52	23.75	2.57	5.99	0.00
2010	140.82	140.83	157.86	160.72	140.70	113.54	114.77	145.73	153.04	143.62	155.76	154.82	65.96	98.73	144.74	145.89	122.48	100.00	6.61	6.59	5.23	5.07	6.98	-1.51	2.26	6.72	6.42	6.41	9.00	3.59	0.14	5.04	7.18	3.23	5.00	0.00
2011	158.89	155.02	188.81	180.70	239.89	145.24	128.41	150.45	161.11	157.15	170.00	175.52	65.98	101.09	167.19	168.68	133.03	100.00	12.83	10.08	19.60	12.43	70.50	27.91	11.89	3.24	5.27	9.42	9.15	13.37	0.02	2.39	15.51	15.62	8.61	0.00
Jun 2010 to May 2011	145.26	144.29	166.10	166.15	165.73	116.64	116.97	147.97	156.26	147.17	159.61	159.77	65.99	99.92	154.82	148.65	124.42	100.00	16.19	12.06	24.29	13.65	91.46	61.76	17.96	2.57	4.29	15.34	8.93	17.04	-0.28	0.81	14.18	28.87	15.01	0.00
Jun 2011 to May 2012	168.79	161.69	206.43	188.84	317.30	188.67	137.99	151.78	162.97	169.74	173.86	187.00	65.81	100.72	176.78	191.57	143.09	100.00																		
May 2012 / May 2011																		8.23	7.95	7.76	6.85	11.66	71.41	15.02	3.13	5.37	20.33	1.62	9.99	-1.07	0.36	13.77	27.95	16.52	0.00	
2011 May	156.49	151.54	188.44	177.08	260.04	129.35	126.35	149.69	158.95	152.86	171.15	178.02	66.36	99.98	167.19	162.51	129.21	100.00	3.44	2.68	5.96	4.30	13.71	6.44	2.29	0.89	0.13	1.47	4.13	4.18	0.60	0.13	0.00	2.83	0.63	0.00
June	159.06	153.30	192.22	178.36	279.58	141.23	128.98	150.04	159.34	153.27	170.66	178.30	66.36	100.08	167.19	166.11	131.64	100.00	1.64	1.16	2.01	0.73	7.51	9.18	2.08	0.23	0.25	0.26	-0.29	0.16	0.00	0.10	0.00	2.22	1.88	0.00
July	162.93	156.05	198.73	181.56	306.97	143.93	130.06	148.38	159.46	152.69	169.64	178.30	66.15	99.61	167.19	166.11	131.62	100.00	2.43	1.79	3.39	1.79	9.80	1.92	0.84	-1.11	0.08	-0.38	-0.60	0.00	-0.32	-0.47	0.00	0.00	-0.02	0.00
Aug	163.27	158.65	197.71	187.83	259.96	146.06	131.30	149.32	160.08	155.45	169.61	179.54	66.09	99.82	167.19	166.11	134.10	100.00	0.21	1.67	-0.52	3.45	-15.31	1.48	0.95	0.63	0.39	1.81	-0.02	0.70	-0.09	0.22	0.00	0.00	1.88	0.00
Sep	165.74	160.45	200.99	189.03	276.37	155.21	133.60	149.63	160.48	158.75	177.07	179.94	66.09	100.81	167.19	179.50	136.82	100.00	1.51	1.13	1.66	0.64	6.31	6.26	1.75	0.21	0.25	2.13	4.40	0.22	0.00	0.99	0.00	8.07	2.03	0.00
ober	165.55	163.15	194.05	190.59	215.82	164.52	139.92	150.16	161.65	168.65	177.21	187.63	65.61	102.63	167.19	186.97	142.08	100.00	-0.11	1.68	-3.45	0.83	-21.91	6.00	4.73	0.35	0.73	6.23	0.08	4.27	-0.72	1.80	0.00	4.16	3.84	0.00
Nov	171.90	164.97	210.17	193.25	316.80	162.25	138.69	152.66	162.76	172.51	177.86	188.37	65.61	102.81	167.19	200.81	144.48	100.00	3.83	1.12	8.31	1.40	46.79	-1.38	-0.87	1.67	0.69	2.29	0.37	0.39	0.00	0.18	0.00	7.40	1.69	0.00
Dec	173.53	167.69	210.13	196.53	295.81	224.88	137.90	152.89	163.04	172.00	177.74	189.25	65.61	102.03	167.19	200.81	144.70	100.00	0.95	1.65	-0.02	1.69	-6.63	38.60	-0.57	0.15	0.17	-0.30	-0.07	0.47	0.00	-0.76	0.00	0.00	0.16	0.00
2012 Jan	173.40	163.18	219.06	192.38	387.21	228.71	141.53	153.04	164.20	177.74	172.37	190.86	65.61	99.90	190.21	203.24	147.93	100.00	-0.08	-2.69	4.25	-2.11	30.90	1.70	2.63	0.10	0.71	3.34	-3.02	0.85	0.00	-2.09	13.77	1.21	2.23	0.00
Feb	172.93	163.17	216.04	190.50	377.02	232.05	141.53	153.04	164.79	179.71	172.44	189.33	65.61	100.15	190.21	205.40	151.09	100.00	-0.27	-0.01	-1.38	-0.97	-2.63	1.46	0.00	0.00	0.36	1.11	0.04	-0.80	0.00	0.24	0.00	1.06	2.14	0.00
Mar	174.01	163.13	217.85	188.68	401.67	223.30	143.00	153.04	165.38	181.17	173.92	193.24	65.65	100.28	190.21	207.90	151.67	100.00	0.63	-0.03	0.84	-0.95	6.54	-3.77	1.04	0.00	0.36	0.81	0.86	2.07	0.05	0.13	0.00	1.22	0.38	0.00
Apr	173.78	162.96	217.21	188.19	400.07	220.16	144.00	154.78	167.00	180.98	173.93	193.42	65.65	100.22	190.21	207.92	150.44	100.00	-0.13	-0.10	-0.30	-0.26	-0.40	-1.41	0.70	1.14	0.98	-0.11	0.01	0.09	0.00	-0.06	0.00	0.01	-0.81	0.00
May	169.37	163.58	203.06	189.20	290.37	221.72	145.33	154.38	167.48	183.94	173.93	195.81	65.65	100.34	190.21	207.92	150.55	100.00	-2.54	0.38	-6.52	0.54	-27.42	0.71	0.92	-0.26	0.29	1.64	0.00	1.24	0.00	0.12	0.00	0.00	0.07	0.00

# Annex 5: Male' - Consumer Price Index and Inflation rates by Major categories

	Consumer Price Index - CPI ( June 2004 =100)																		% change in CPI / Inflation Rate																	
	Total	Total Excluding Fish	1. Food and beverages Including Fish	Food and beverages Excluding Fish	1.1 Fish	2. Tobacco	3. Clothing & footwear	4. Housing, water, electricity, gas & other fuels	Actual rentals for housing	5. Furnishing, household equipments & routine maintenance of	6. Health	7. Transport	8. Communication	9. Recreation & culture	10. Education	11. Hotels, cafes & restaurants	12. Miscellaneous goods & services	13. Religious activity	Total	Total Excluding Fish	Food and beverages Including Fish	Food and beverages Excluding Fish	Fish	Tobacco	Clothing & footwear	Housing, water, electricity, gas & other fuels	Actual rentals for housing	Furnishing, household equipments & routine maintenance of	Health	Transport	Communication	Recreation & culture	Education	Hotels, cafes & restaurants	Miscellaneous goods & services	Religious activity
Weights	48.90	46.48	13.39	10.97	2.42	0.93	2.45	12.30	7.17	2.85	2.76	2.92	3.84	2.10	1.51	0.77	2.96	0.11	48.90	46.48	13.39	10.97	2.42	0.93	2.45	12.30	7.17	2.85	2.76	2.92	3.84	2.10	1.51	0.77	2.96	0.11
2009	130.21	130.13	151.57	155.95	131.68	111.35	109.30	131.18	143.81	129.43	151.16	153.56	61.32	88.34	150.19	141.33	118.07	100.00	4.53	5.48	0.52	2.93	-10.70	-1.80	3.21	7.82	14.29	10.94	2.25	0.98	-0.75	5.01	35.09	2.57	7.10	0.00
2010	138.21	138.02	162.90	167.54	141.88	110.98	112.54	141.13	153.04	137.17	158.21	158.66	61.46	93.41	164.38	145.89	123.88	100.00	6.15	6.07	7.48	7.43	7.74	-0.33	2.96	7.59	6.42	5.98	4.66	3.32	0.23	5.74	9.44	3.23	4.93	0.00
2011	153.79	150.03	195.36	188.60	226.03	141.21	127.04	145.24	159.87	142.94	174.92	180.47	61.61	91.43	194.52	168.68	133.07	100.00	11.27	8.70	19.93	12.57	59.31	27.24	12.89	2.91	4.46	4.20	10.56	13.74	0.24	-2.13	18.34	15.62	7.42	0.00
Jun 2010 to May 2011	142.92	141.84	173.45	175.62	163.63	113.97	114.48	143.46	156.26	137.69	162.56	163.49	61.51	93.37	178.12	148.65	124.52	100.00	14.69	11.03	22.64	11.75	75.64	64.02	22.09	2.30	4.29	12.75	13.33	17.29	-0.10	-1.85	16.76	28.87	17.22	0.00
Jun 2011 to May 2012	163.91	157.48	212.72	196.25	287.40	186.94	139.78	146.76	162.97	155.25	184.22	191.75	61.45	91.64	207.98	191.57	145.97	100.00																		
May 2012 / May 2011																			9.13	8.99	5.50	4.05	10.74	75.44	23.25	1.66	5.37	26.75	7.12	8.41	-1.35	3.25	16.62	27.95	21.64	0.00
2011 May	154.13	149.71	198.54	189.59	239.10	125.87	123.69	146.74	158.95	136.43	178.16	183.27	62.07	90.45	194.52	162.51	127.85	100.00	3.31	2.91	5.59	4.81	8.47	5.29	2.58	1.35	0.13	0.35	6.25	5.88	0.98	-0.02	0.00	2.83	-0.58	0.00
June	155.53	150.22	200.21	187.57	257.53	138.69	124.62	146.97	159.34	140.21	178.58	183.61	62.07	90.85	194.52	166.11	132.07	100.00	0.91	0.34	0.84	-1.07	7.71	10.19	0.75	0.16	0.25	2.77	0.24	0.19	0.00	0.45	0.00	2.22	3.30	0.00
July	155.63	149.23	204.88	188.64	278.54	139.34	125.94	143.41	159.46	140.95	172.95	183.61	61.99	87.83	194.52	166.11	132.76	100.00	0.06	-0.66	2.33	0.57	8.16	0.47	1.06	-2.42	0.08	0.53	-3.15	0.00	-0.13	-3.33	0.00	0.00	0.52	0.00
Aug	156.12	150.96	204.53	193.35	255.24	137.71	127.66	144.60	160.08	141.40	172.95	184.90	61.90	87.83	194.52	166.11	135.00	100.00	0.32	1.16	-0.17	2.50	-8.37	-1.18	1.36	0.83	0.39	0.31	0.00	0.71	-0.14	0.01	0.00	0.00	1.69	0.00
Sep	158.15	153.01	206.34	195.20	256.84	143.21	131.88	144.90	160.48	142.60	183.63	185.75	61.90	89.25	194.52	179.50	137.52	100.00	1.30	1.36	0.88	0.96	0.63	4.00	3.31	0.21	0.25	0.85	6.17	0.46	0.00	1.61	0.00	8.07	1.86	0.00
Oct	158.67	156.20	199.64	198.21	206.14	150.56	142.24	145.15	161.65	152.89	183.89	193.64	61.18	92.44	194.52	186.97	143.33	100.00	0.33	2.09	-3.25	1.54	-19.74	5.13	7.85	0.18	0.73	7.22	0.14	4.25	-1.17	3.58	0.00	4.16	4.23	0.00
Nov	164.11	157.80	215.54	200.14	285.37	152.48	142.06	146.62	162.76	156.06	184.90	194.86	61.18	92.55	194.52	200.81	145.75	100.00	3.42	1.02	7.96	0.98	38.44	1.28	-0.13	1.01	0.69	2.07	0.55	0.63	0.00	0.11	0.00	7.40	1.69	0.00
Dec	166.04	160.60	216.41	204.47	270.58	241.17	140.25	146.80	163.04	154.80	184.90	196.50	61.18	92.58	194.52	200.81	146.04	100.00	1.18	1.77	0.40	2.16	-5.18	58.16	-1.27	0.12	0.17	-0.80	0.00	0.84	0.00	0.03	0.00	0.00	0.20	0.00
2012 Jan	170.86	161.93	225.81	200.10	342.43	236.92	145.11	147.05	164.20	161.18	188.14	195.83	61.18	93.24	226.83	203.24	153.35	100.00	2.90	0.83	4.34	-2.14	26.55	-1.76	3.46	0.17	0.71	4.12	1.75	-0.34	0.00	0.72	16.62	1.21	5.00	0.00
Feb	170.35	161.88	221.89	197.37	333.14	237.24	146.76	147.73	164.79	164.91	188.28	192.88	61.18	93.09	226.83	205.40	157.09	100.00	-0.30	-0.03	-1.73	-1.37	-2.71	0.13	1.14	0.47	0.36	2.31	0.07	-1.51	0.00	-0.16	0.00	1.06	2.44	0.00
Mar	171.69	162.36	224.58	196.73	350.93	224.77	148.41	148.85	165.38	167.58	190.82	195.05	61.23	93.30	226.83	207.90	157.04	100.00	0.79	0.30	1.21	-0.32	5.34	-5.26	1.12	0.76	0.36	1.62	1.35	1.13	0.09	0.23	0.00	1.22	-0.03	0.00
Apr	171.54	162.39	223.22	195.87	347.30	220.43	149.96	149.82	167.00	167.49	190.82	195.71	61.23	93.32	226.83	207.92	156.13	100.00	-0.09	0.02	-0.61	-0.44	-1.03	-1.93	1.05	0.65	0.98	-0.05	0.00	0.34	0.00	0.03	0.00	0.01	-0.58	0.00
May	168.20	163.18	209.46	197.26	264.77	220.84	152.44	149.17	167.48	172.94	190.85	198.68	61.23	93.39	226.83	207.92	155.52	100.00	-1.95	0.48	-6.17	0.71	-23.76	0.18	1.66	-0.43	0.29	3.25	0.02	1.52	0.00	0.07	0.00	0.00	-0.39	0.00

# Annex 6: Atolls - Consumer Price Index and Inflation rates by Major categories

		Consumer Price Index - CPI ( June 2004 =100)														% change in Consumer Price Index - CPI																
		Total	Total Excluding Fish	1. Food and beverages Including Fish	Food and beverages Excluding Fish	1.1 Fish	2. Tobacco	3. Clothing & footwear	4. Housing, water, electricity, gas & other fuels	5. Furnishing, household equipments & routine maintenance of	6. Health	7. Transport	8. Communication	9. Recreation & culture	10. Education	12. Miscellaneous goods & services	Total	Total Excluding Fish	Food and beverages Including Fish	Food and beverages Excluding Fish	Fish	of Tobacco	Clothing & footwear	Housing, water, electricity, gas & other fuels	Furnishing, household equipments & routine maintenance of	Health	Transport	Communication	Recreation & culture	Education	Miscellaneous goods & services	
Weights		51.10	48.96	19.92	17.78	2.14	1.83	3.51	7.18	2.44	2.66	2.14	1.98	2.83	1.63	4.96	51.10	48.96	19.92	17.78	2.14	1.83	3.51	7.18	2.44	2.66	2.14	1.98	2.83	1.63	4.96	
2009		133.89	134.01	148.86	150.97	131.32	117.30	117.21	146.13	143.16	128.84	144.50	74.67	91.70	115.96	115.54	3.48	4.53	2.13	4.52	-16.16	-2.22	5.33	6.89	8.20	3.31	0.33	0.00	-4.51	8.10	5.21	
2010		143.32	143.49	155.11	157.01	139.36	114.76	118.44	154.61	148.89	169.27	150.19	74.67	93.20	119.92	121.37	7.04	7.08	4.20	4.00	6.12	-2.17	1.04	5.81	4.00	31.38	3.94	0.00	1.63	3.41	5.04	
2011		163.76	159.75	185.08	176.60	255.38	147.29	129.68	157.31	160.91	184.97	170.41	74.44	97.92	122.96	132.49	14.27	11.33	19.32	12.48	83.25	28.35	9.49	1.74	8.07	9.27	13.47	-0.31	5.07	2.54	9.16	
Jun 2010 to May 2011		147.51	146.62	161.78	161.04	167.95	118.00	119.87	156.63	152.47	173.14	156.15	74.67	94.60	121.19	124.07	17.59	13.01	25.45	14.95	109.03	60.64	14.77	2.20	11.09	-3.03	16.06	-0.58	3.84	1.46	13.35	
Jun 2011 to May 2012		173.46	165.69	202.96	185.11	351.06	189.55	137.58	160.08	169.37	167.88	181.23	74.24	98.23	122.96	140.64	7.39	6.98	9.46	8.84	12.54	69.44	12.84	5.44	15.08	-23.12	11.81	-0.63	-0.27	0.00	13.10	
May 2012 / May 2011																																
2011 May		158.74	153.27	182.14	169.90	283.69	131.13	124.89	154.21	152.81	177.88	171.84	74.67	97.99	122.96	129.78	3.56	2.42	6.07	3.62	20.13	7.01	3.27	-0.13	0.41	0.00	0.32	0.00	0.36	0.00	1.40	
June		162.43	156.21	187.32	173.20	304.46	142.52	133.37	154.75	158.79	177.54	172.04	74.67	97.75	122.96	130.78	2.32	1.92	2.84	1.94	7.32	8.69	6.79	0.35	3.92	-0.19	0.12	0.00	-0.25	0.00	0.77	
July		169.92	162.52	195.28	177.95	339.06	146.28	133.61	156.36	158.02	191.37	172.04	74.20	97.62	122.96	130.37	4.61	4.03	4.25	2.74	11.37	2.64	0.18	1.04	-0.49	7.79	0.00	-0.63	-0.13	0.00	-0.32	
Aug		170.12	165.95	194.01	185.41	265.29	150.34	134.50	156.89	161.31	191.30	173.22	74.20	98.05	122.96	132.82	0.11	2.11	-0.65	4.19	-21.76	2.77	0.66	0.34	2.08	-0.04	0.69	0.00	0.44	0.00	1.88	
Sep		173.00	167.51	198.43	186.38	298.42	161.34	135.75	157.22	165.51	192.59	172.99	74.20	98.97	122.96	135.77	1.69	0.94	2.28	0.52	12.49	7.32	0.93	0.21	2.60	0.67	-0.14	0.00	0.94	0.00	2.23	
Oct		172.14	169.75	191.18	186.89	226.74	171.66	139.06	158.16	167.25	192.64	180.36	74.20	99.93	122.96	140.58	-0.50	1.34	-3.65	0.28	-24.02	6.40	2.44	0.60	1.05	0.02	4.26	0.00	0.97	0.00	3.54	
Nov		179.36	171.79	207.27	189.79	352.28	167.25	137.14	162.59	170.28	193.04	180.50	74.20	100.09	122.96	142.95	4.19	1.20	8.41	1.55	55.36	-2.57	-1.38	2.80	1.81	0.21	0.08	0.00	0.16	0.00	1.69	
Dec		180.70	174.41	206.56	192.37	324.29	216.56	136.89	162.93	171.21	192.80	180.50	74.20	98.66	122.96	143.05	0.75	1.53	-0.34	1.36	-7.94	29.48	-0.18	0.21	0.55	-0.12	0.00	0.00	-1.43	0.00	0.07	
2012 Jan		175.84	164.38	215.08	188.23	437.76	224.52	139.71	162.75	175.71	136.51	184.82	74.20	97.05	122.96	143.90	-2.69	-5.75	4.12	-2.15	34.99	3.68	2.06	-0.11	2.63	-29.20	2.39	0.00	-1.63	0.00	0.59	
Feb		175.39	164.40	212.98	187.23	426.54	229.40	139.99	161.49	176.41	136.52	184.93	74.20	97.62	122.96	146.73	-0.25	0.02	-0.98	-0.53	-2.56	2.17	0.20	-0.77	0.40	0.01	0.06	0.00	0.59	0.00	1.97	
Mar		176.23	163.85	214.04	184.52	458.95	222.55	139.57	162.65	176.25	136.76	190.85	74.20	97.75	122.96	147.69	0.48	-0.33	0.50	-1.45	7.60	-2.98	-0.30	0.72	-0.09	0.17	3.20	0.00	0.13	0.00	0.65	
Apr		175.92	163.50	214.04	184.44	459.65	220.02	140.40	162.57	175.86	136.78	190.38	74.20	97.56	122.96	146.23	-0.18	-0.22	0.00	-0.04	0.15	-1.14	0.59	-0.05	-0.22	0.01	-0.25	0.00	-0.19	0.00	-0.99	
May		170.48	163.97	199.38	184.93	319.26	222.17	140.92	162.60	175.85	136.75	192.13	74.20	97.73	122.96	146.78	-3.09	0.29	-6.85	0.26	-30.54	0.98	0.37	0.02	-0.01	-0.02	0.92	0.00	0.17	0.00	0.37	