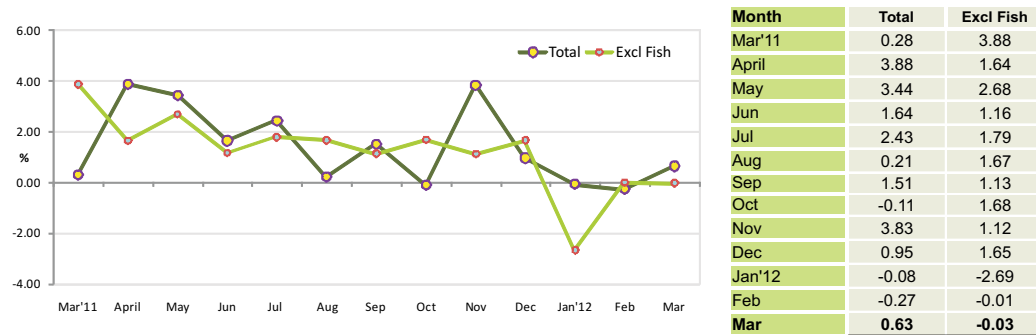


1. Inflation Rate of Nation (Monthly): March 2012 compared to February 2012

To measure month to month inflation, this month's index is compared with the previous month inflation (for e.g :March '12 /February '12). The monthly inflation for March 2012 is 0.63% and -0.30% is the total excluding fish.

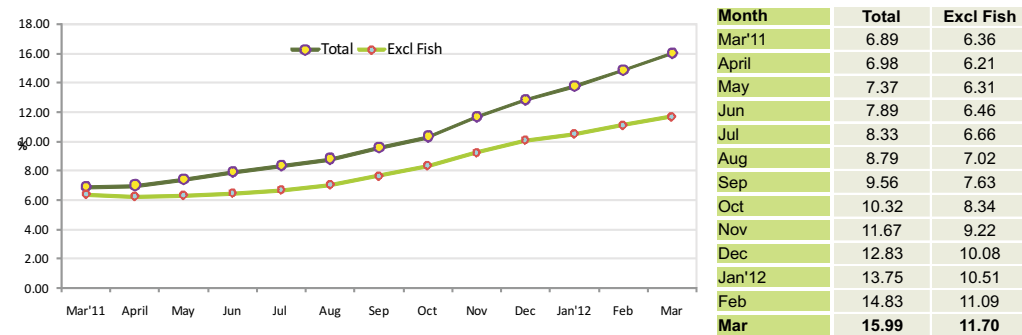
Figure 8. Monthly Inflation Rate of Nation, (compared to the previous month)



2. Inflation Rate of Nation (Annualized): April '11 to March '12 /April '10 to March '11

The annualized inflation rate for any month compares the average for the 12 monthly indices with that of the preceding 12 months (Eg: April '11 to March '12 /April '10 to March '11). This index shows an annual inflation of 15.99%, and the annualized total excluding fish is 11.70%.

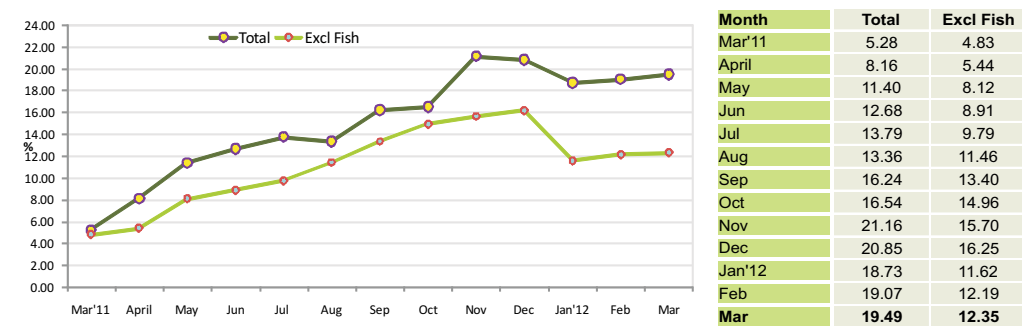
Figure 9. Annualized Inflation Rate of Nation (compared to the past 12 month period)



3. Inflation Rate of Nation (month on month): March '12 /March '11

To measure the month on month change at one point in time, the index of the month is compared with that of the same month in the preceding year (Eg: March '12 /March '11). The month on month index for March shows an inflation of 19.49% and the inflation excluding fish is 12.35%.

Figure 10. Month on Month inflation Rate of Nation (compared to the same month of the previous year)



CONSUMER PRICE INDEX - NATIONAL

Department of National Planning
Ministry of Finance and Treasury

March 2012

Consumer Price Index-Nation March 2012

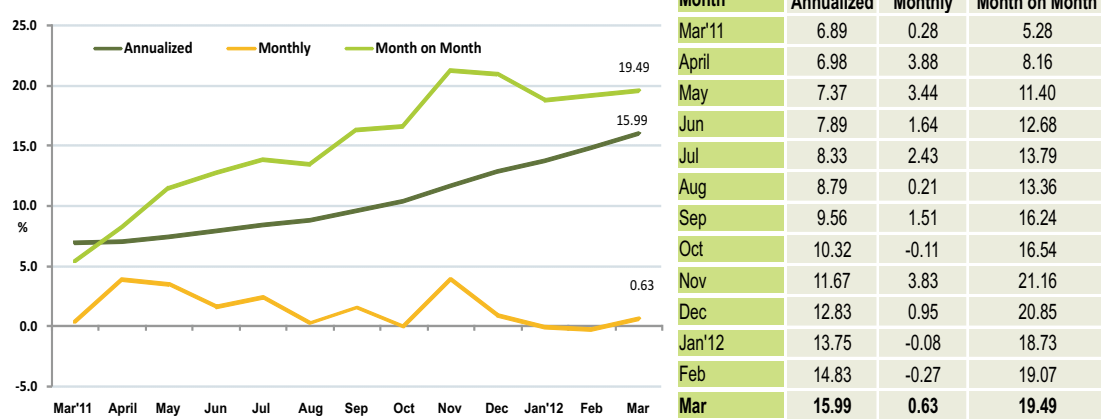
Inflation Rate of Nation

The Consumer Price Index (CPI) for nation rose at an annualized rate of 15.99 percent in March 2012. The inflation was driven mainly by food & beverages, fish and transport categories.

Monthly CPI of March 2012 increased by 0.63 percent compared to February 2012. The inflation was mainly driven from fish followed by housing, water, electricity, gas & other fuels and transport categories.

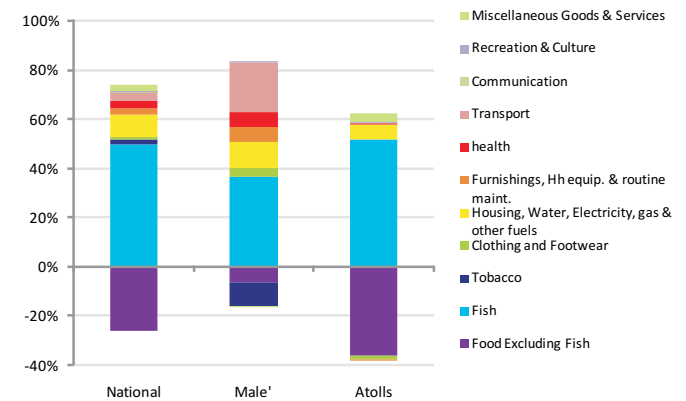
When March 2012 is compared with March 2011, the consumer price index increased by 19.49 percent. Fish category showed the highest inflation followed by tobacco and hotel, cafes & restaurants categories.

Figure 1: Inflation rates of Nation, March-2012



Sources of changes in CPI - Monthly

Figure 2: Sources of changes in March CPI - Monthly



Major contributors to the change in the CPI- Monthly basis

The largest upward contribution to the change in the monthly CPI for Nation came from fish which contributed 48%. Among this category, other tuna prices increased significantly by 25% compared to February. Additionally skipjack tuna and dried fish chips also contributed to this hike. However, reef fish prices decreased by 16% compared to February.

The second largest upward contribution to the change in monthly CPI came from housing, water, electricity, gas & other fuels category which contributed 17%. Among this category, plywood prices increased by 13% while the paint prices increased by 2%. Additionally electricity charges also contributed to this increase. This is due to the increase in fuel sur-charges.

The third largest upward contribution to the change in the monthly CPI came from transport category. Postage of letter prices increased by 13% compared to last month. Additionally taxi fare prices also increase during the month. Taxi prices in atolls increased by 10% during the month. Motorcycle prices increased by 4% compared to last month.

Food & beverages excluding fish pulled down the monthly inflation by 25%. As for this category, bean and potato prices decreased by 12% and 10% respectively in March compared to last month. Coconut prices decreased by 10% while watermelon prices decreased by 9% during this month. Githeyo mirus (local chilli), banana, onion, lemon and frozen chicken prices declined in March. This decrease was the major factor in decline in food index. However, mango, green chilli, cabbage and garlic registered a high price during the month.

1. Inflation Rate of Male' & Atolls (Monthly): compared to previous month

The monthly inflation rate for both Male' and atolls fluctuated over the period. Male' prices have shown fluctuations with inflation rate peaking in April followed by November 2011 and again in January 2012. This is due to the change in dollar exchange rate in April 2011 and the introduction of GST in selected products in October 2011 and due to the fact that GST increased to 6% in January 2012.

Figure 3. Monthly Inflation Rate, Male' & Atolls, (compared to the previous month)

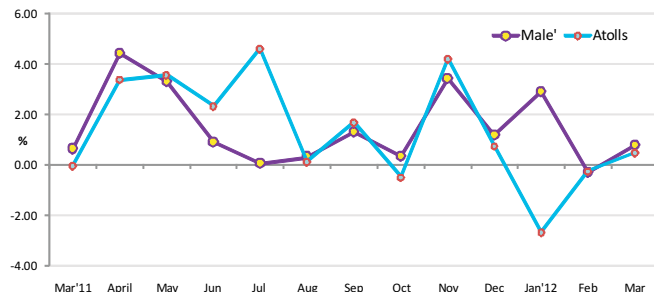
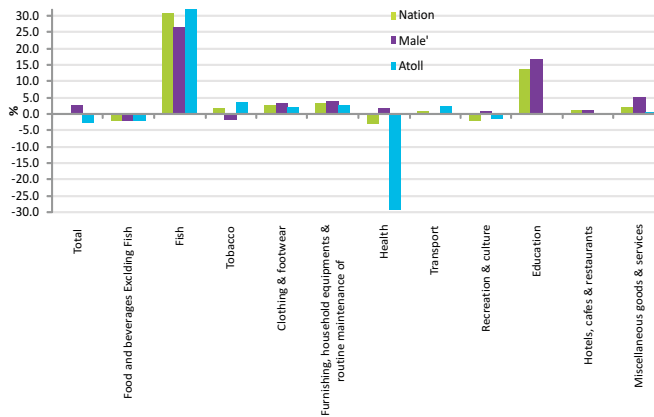


Figure 4. Inflation by major categories, Nation, Male' & Atolls, January 2012 (compared to the previous month)



The variation is huge between Male' and Atolls in July 2011. This is due to the fact that X-ray prices in the atolls increased by 22% compared to June 2011 which had impacted the health category and pulled up the overall inflation of atolls.

However in atolls monthly CPI of January 2012 decreased by -2.69%. While in Male', monthly CPI of January 2012 increased by 2.90% compared to December 2012.

In atolls this decrease is due to the fact that introduction of universal health care "Aasandha program" had pulled down the health sector inflation rate which had contributed the overall deflation in atolls.

Figure 4 shows monthly inflation for major categories by National, Male' and Atolls, January 2012 compared to December 2011

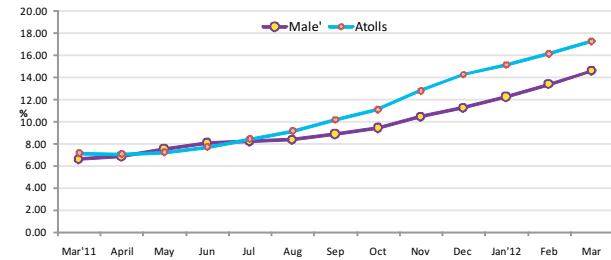
Price increase in all the major categories for Male' and the atolls showed a similar pattern as both tend to move in the same direction with the exception of tobacco, health and recreation & culture categories.

Inflation of health category for Male' has increased by 1.75% while the inflation for the same category has declined by 3.02% in National and 29.02% in Atolls. In Atolls, the decrease was due to the introduction of universal health care and almost all the hospitals in the atolls are covered under the scheme. However in Male', there are lots of clinic which are not covered under the scheme.

2. Inflation Rate of Male' & Atolls (Annualized): April '11 to March '12 / April '10 to March '11

The annualized inflation rate for both Male' and atolls increased over time with atolls inflation rate being highest at the end of March 2011. The increase on annualized inflation rate for Atolls was higher than that of Male' by 3 percentage points.

Figure 5. Annualized Inflation Rate, Male' & Atolls (compared to the past 12 month period)



From April 2011 inflation rate in the atolls is lower than the inflation rate in Male' and rose gradually from July 2011 onwards reaching 14.60% in March 2012 for Male' and 17.28% for Atolls

Annualized inflation rate of the nation was driven mainly by food & beverage and fish categories, which in total accounted for more than 68% of the change.

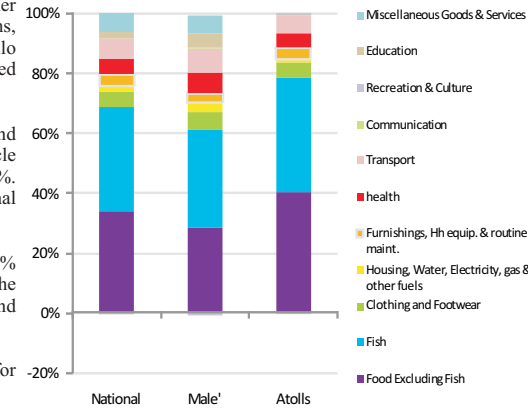
Figure 8: Sources of changes in March CPI - Annualized

Among food category, chicken sausage prices increased by 78%. Green chilli and carrot prices increased by 72% and 69% respectively. Other food items which showed a price increase above 40% were beans, cabbage, tea bags, frozen beef, cooking oil, curry powder, butter bun, milo and baby milk powder. However, mango and onion prices decreased during the period.

Transport and miscellaneous goods & services contributed about 7% and 6% respectively to pulled up the overall annualized inflation. Motorcycle prices rose by 170% while motorcycle tyre prices increased by 124%. During the period petrol prices also increased by 54% and international airfare prices increased by 31%.

Clothing & footwear also contributed in driving the inflation up, about 5% for the overall inflation, with this effect seen in atolls and a bit more in the Male'. Among this category, uniform prices increased by 128% and women's t-shirt prices increased 38% during period.

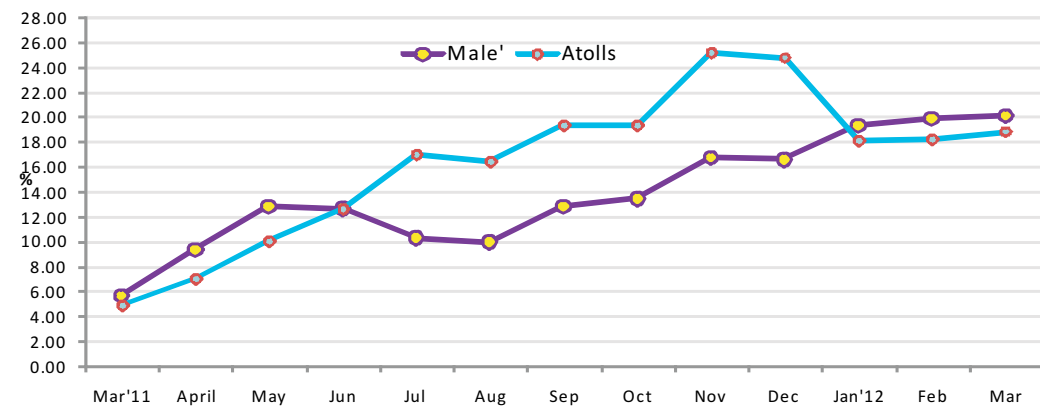
Health category also contributed in driving the inflation up, about 5% for the overall inflation, about 7% in Male' and 4% in the Atolls.



3. Inflation Rate of Male' & Atolls (month on month): March '12 / March '11

From March 2011 till June 2011 month on month inflation rate for atolls is lower than that of Male' and rose gradually from July till December 2011 and again starting from January 2012 onwards the month on month inflation rate for Atolls is lower than that of Male' reaching 18.86% in March for Atolls and 20.17% for Male'.

Figure 7. Month on Month inflation Rate, Male' & Atolls (compared to the same month of the previous year)



Annex 1: Average monthly Prices of Items which showed a significant change, CPI National, Male' & Atolls, March 2012

Description	Specification	Unit	National - Monthly			Male' - Monthly			Atolls - Monthly		
			Average Price		% Chn	Average Price		% Chn	Average Price		% Chn
			Feb 2012	Mar 2012	Feb 2012 / Mar 2012	Feb 2012	Mar 2012	Feb 2012 / Mar 2012	Feb 2012	Mar 2012	Feb 2012 / Mar 2012
Food											
Biscuits	Cream Cracker, Khong Guan	200 gram, packet	13.44	13.37	-0.53	13.31	13.20	-0.85	13.38	13.29	-0.68
Biscuits	Marie Biscuit	400 Gram	22.05	22.19	0.65	24.03	24.18	0.64	23.04	23.18	0.64
Bread	Small Bread	1 Piece	12.54	12.54	0.00	12.42	12.65	1.91	12.48	12.59	0.95
Bread	Large	1 Piece	23.25	23.18	-0.31	15.83	15.83	0.00	19.54	19.51	-0.18
Bread spread	Chocolate Crumpy	225 Gram	43.37	42.83	-1.24	44.31	44.31	0.00	43.84	43.57	-0.61
Butter bun	butter buns / Packed	1 Piece	4.00	4.12	2.88	4.64	4.52	-2.69	4.32	4.32	-0.11
Bun	Small Buns/ Un packed	1 Piece	0.54	0.54	0.00	0.98	0.98	0.00	0.76	0.76	0.00
Rice-Basmati	Basmati Rice / Pre Packed	1 kg	27.71	27.87	0.59	29.48	29.52	0.14	28.59	28.70	0.35
Rice	Ordinary Rice / loose	1 kg	4.56	4.58	0.46	5.55	5.55	0.00	5.05	5.06	0.21
Flour	Ordinary Flour / loose	1 kg	3.70	3.70	0.00	4.89	4.87	-0.29	4.29	4.29	-0.16
Noodles	Mamee Noodles / Packet	85 Gram	4.17	4.15	-0.39	4.99	4.95	-0.68	4.58	4.55	-0.55
Corn flake	Kellogg's / Wheat and Honey	300 Gram	45.57	44.01	-3.42	31.00	31.00	0.00	38.28	37.50	-2.03
Chicken sausage	Chicken Sausage / Packed	340 Gram	22.67	21.71	-4.26	26.25	26.25	0.00	24.46	23.98	-1.97
Chicken drumsticks	Chicken drumstick	1 kg	75.52	74.36	-1.53	64.52	61.73	-4.32	70.02	68.05	-2.82
Egg	Chicken egg / Imported	1 Piece	1.54	1.56	1.26	1.83	1.76	-3.70	1.68	1.66	-1.44
Baby food - cereal	Nestum / Wheat & Honey	250 Gram / Tin	48.48	48.08	-0.83	47.81	48.06	0.53	48.14	48.07	-0.16
Baby food - cereal	Promina / Banana	250 Gram / Packet	20.61	20.61	0.00	21.43	21.35	-0.40	21.02	20.98	-0.20
Baby milk powder	Lactogen	450 Gram, tin	74.19	73.99	-0.27	78.16	76.94	-1.57	76.17	75.46	-0.93
Baby milk powder	Anflace	450 Gram / Tin	165.15	174.61	5.73	174.17	174.17	0.00	169.66	174.39	2.79
Baby milk powder	S.M.A / Progress	450 Gram / Tin	122.83	122.83	0.00	128.96	128.96	0.00	128.90	125.90	0.00
Milk powder	Coast	1800 Gram, tin	249.76	255.98	2.49	275.03	273.19	-0.67	262.40	264.59	0.83
Milk powder	Nido	1800 Gram / Tin	278.65	269.36	-3.33	274.42	274.42	0.00	276.54	271.89	-1.68
Condensed milk	Double Peach	397Gram, tin	14.62	14.94	2.13	16.57	16.34	-1.37	15.59	15.64	0.27
Condensed milk	Cow Bell	397 Gram / Tin	14.79	14.98	1.27	15.87	15.70	-1.05	15.33	15.34	0.07
Margarine	Daisy brand tub / Small	250 Gram	28.22	28.01	-0.74	27.57	27.52	-0.17	27.89	27.76	-0.46
Cooking oil	Bemoli Oil	2 Ltr	62.83	60.75	-3.31	70.61	70.61	0.00	66.72	65.68	-1.56
Cooking oil	Sun Flower Oil	2 Ltr	106.74	106.74	0.00	103.11	103.11	0.00	104.92	104.92	0.00
Apple	Apple	1 Piece	5.41	5.52	1.98	5.77	5.79	0.51	5.59	5.66	1.22
Banana	Bonthiraiy	1 Piece	2.51	2.39	-4.75	1.24	1.08	-13.23	1.88	1.73	-7.56
Orange	Fresh Orange	1 Piece	3.26	3.32	1.84	4.58	4.40	-3.86	3.92	3.86	-1.49
Canned mixed fruits	Canned Mixed Fruit / Small	398 Gram	28.20	28.20	0.00	31.19	30.54	-2.08	29.70	29.37	-1.09
Canned pineapple	Canned Pineapple	567 Gram	22.73	22.85	0.51	24.51	24.34	-0.69	23.62	23.59	-0.11
lemon	Imported lemon	1 Piece	2.06	2.02	-1.97	2.24	2.01	-10.48	2.15	2.01	-6.40
Green chilli	Green Chilli / Imported	100 Gram	6.63	7.08	6.79	27.14	30.52	12.46	16.88	18.80	11.35
Githeyo Mirus	Dhivehi mirus	1 Piece	2.50	2.53	1.17	3.30	2.82	-14.51	2.90	2.67	-7.75
Mixed fresh vegetables	Mixed Vegetables	1 kg	39.96	43.69	9.33	40.87	38.77	-5.14	40.42	41.23	2.01
Tomato	Fresh Tomato	1kg	29.06	30.75	5.82	34.08	36.45	6.95	31.57	33.60	6.43
Cucumber	Fresh Cucumber	1 kg	22.70	25.02	10.25	22.00	21.03	-4.42	22.35	23.03	3.03
Carrot	Fresh Carrot	1 kg	27.38	28.08	2.53	33.33	36.67	10.00	30.36	32.37	6.63
Cabbage	Fresh Cabbage	1 kg	21.77	23.77	9.19	28.33	31.67	11.76	25.05	27.72	10.65
Beans	Fresh Beans	1 kg	55.77	55.38	-0.69	75.00	60.00	-20.00	65.38	57.69	-11.76
Garlic	Garlic	100 Gram	4.44	4.57	3.11	5.14	5.95	15.87	4.79	5.26	9.96
Ginger	Ginger	100 Gram	4.37	4.19	-4.28	6.74	6.88	2.09	5.56	5.53	-0.42
Potato	Imported Potato	1 kg	10.60	9.73	-8.20	13.50	11.87	-12.07	12.05	10.80	-10.37
Canned baked beans	Baked Beans / Canned	400 Gram	14.41	14.36	-0.35	14.42	14.32	-0.72	14.41	14.34	-0.53
Canned green peas	Green peas / Processed peas / Canned	440 Gram	11.66	11.63	-0.27	10.00	10.00	0.00	10.83	10.82	-0.15
Dhal	Yellow Colored Dhal	1 kg	49.22	50.32	2.24	50.91	50.86	-0.09	50.06	50.59	1.05
Salt	Fine Salt / Packed	500 Gram	5.15	5.26	2.02	5.71	5.67	-0.66	5.43	5.46	0.61
Sugar	Dhoabraali Hakuru	1 kg	4.55	4.61	1.16	5.48	5.45	-0.44	5.02	5.03	0.28
Curry powder	Fish curry powder / Packed locally	50 Gram	6.65	6.66	0.11	7.77	7.54	-2.94	7.21	7.10	-1.53
Curry powder	Chicken curry powder / Packed locally	50 Gram	6.71	6.75	0.63	7.53	7.40	-1.77	7.12	7.07	-0.64
Dried Chilli	Dried Chilli (Hikimirus) / Loose	1 kg	96.75	96.50	-0.26	81.67	81.67	0.00	89.21	89.08	-0.14
Chilli powder	Chillie Powder / Packed Locally	50 Gram	6.81	6.70	-1.67	8.20	7.97	-2.88	7.51	7.33	-2.33
Onion	Imported Onion	1 kg	10.93	9.97	-8.84	12.79	12.00	-6.14	11.86	10.98	-7.39
Tea leaves-tea bag	Today's Taste / 100 tea bag	200 Gram	34.64	34.36	-0.81	35.15	34.72	-1.22	34.90	34.54	-1.02
Tea leaves-tea bag	Melesna / 100 tea bag	200 Gram	41.51	44.93	8.23	31.00	31.00	0.00	36.26	37.97	4.71
Tea leaves-tea bag	Akbar / 100 tea bag	200 Gram	35.59	35.75	0.47	37.51	37.51	0.00	36.55	36.63	0.23
Tea leaves-loose	Ceylon Tea Leaves (loose)	1 kg	47.82	48.80	2.04	52.40	52.40	0.00	50.11	50.60	0.97
Coffee	Nescafe, Cafe' soluble coffee / Canned	50 Gram	42.33	41.79	-1.28	40.93	40.77	-0.39	41.63	41.28	-0.84
Juice-Sun quick	Sun quick / Orange Juice / Bottled	840 MI	73.87	74.28	0.55	75.30	75.35	0.07	74.59	74.82	0.31
Juice-Foster Clark	Foster Clark / Powdered Juice / Bottled	750 Gram	66.63	66.45	-0.27	66.82	66.94	0.18	66.72	66.70	-0.04
Milo	Nestle Milo Powder / Canned	400 Gram	85.77	86.22	0.53	81.11	81.99	1.08	83.44	84.11	0.80
Candy	Solano	1 Piece / 25 Gram	0.31	0.32	2.72	0.46	0.44	-4.37	0.38	0.38	-1.53
Coke	Dubai coke / Canned	300 MI	11.36	10.90	-4.01	10.40	10.46	0.61	10.88	10.68	-1.80
Coke	Coca Cola / Large Bottle	1500 MI	30.38	30.26	-0.39	32.27	32.01	-0.80	31.32	31.13	-0.60
Mineral water	Bonaqua / Large bottle	1500 MI	5.46	5.54	1.40	7.79	7.75	-0.51	6.62	6.64	0.28
Mineral water	Life / Small Bottle	500 MI	3.09	3.12	0.86	5.69	5.69	0.00	4.39	4.40	0.30
Aracanut	Raw Aracanut / Uncut / Loose	1 kg	107.14	92.61	-13.57	114.81	113.29	-1.32	110.97	102.95	-7.23
Cigarette	Marlboro	20 Piece / 1 Pack	41.05	39.44	-3.92	39.15	38.41	-1.88	40.10	38.93	-2.92
Cigarette	Benson	20 Piece / 1 Pack	41.05	39.44	-3.92	32.66	32.22	-1.36	36.85	35.83	-2.79
Saltish short-eats	Handulu gulha	1 Piece	1.24	1.17	-5.66	1.67	1.67	0.00	1.45	1.42	-2.41
Sweet short-eats	Foni folhi	1 Piece	2.47	2.37	-4.04	2.33	2.33	0.00	2.40	2.35	-2.08
Jam	Tova Brand / Bottle	450 Gram	25.73	25.57	-0.61	26.46	26.18	-1.04	26.09	25.88	-0.83

Description	Specification	Unit	National - Monthly			Male' - Monthly			Atolls - Monthly		
			Average Price		% Chn	Average Price		% Chn	Average Price		% Chn
			Feb 2012	Mar 2012	Feb 2012 / Mar 2012	Feb 2012	Mar 2012	Feb 2012 / Mar 2012	Feb 2012	Mar 2012	Feb 2012 / Mar 2012
Tomato paste	Tomato Paste / Small can	70 Gram	3.07	2.98	-3.10	3.09	3.13	1.36	3.08	3.05	-0.87
Sauce	Tomato Sauce / life Brand	320 Gram / Bottled	15.25	15.40	0.96	12.69	12.68	-0.11	13.97	14.04	0.47
Sauce	Chili Sauce / life Brand	335 Gram / Bottled	17.18	17.06	-0.68	13.64	13.63	-0.11	15.41	15.35	-0.42
Sauce	Chili & Garlic Sauce / life Brand	320 Gram / Bottled	17.59	17.49	-0.56	14.43	14.33	-0.70	16.01	15.91	-0.62
Fish											
Canned fish in oil	Felivaru canned fish / Chunk in Oil	185 Gram	17.99	18.16	0.93	19.61	19.64	0.15	18.80	18.90	0.52
Canned fish in brine	Felivaru Canned Fish / Chunk in Brine	185 Gram	16.93	17.09	0.99	17.67	17.77	0.56	17.30	17.43	0.77
Smoked fish	Smoked Fish (Valhoamas) / Loose	1 kg	146.36	148.73	1.62	90.00	90.00	0.00	118.18	119.37	1.00
Clothing and Footwear											
Mens t-shirt	Men Shirt / Most Sold Brand	1 Piece	191.03	182.80	-4.31	205.00	211.88	3.35	198.02	197.34	-0.34
Men's shirt	Men T-Shirt / Most Sold material	1 Piece	209.35	219.95	5.06	187.39	187.39	0.00	198.37	203.67	2.67
School uniform	School Uniform / Boys / Medium size 14	1 Piece	121.90	121.90	0.00	121.90	121.90	0.00	121.90	121.90	0.00
Men's trousers	Men's Trousers / Long	1 Piece	243.43	224.60	-7.74	236.27	249.40	5.56	239.85	237.00	-1.19
Men's jeans	Mend's Jeans / Most Sold Material	1 Piece	295.43	295.43	0.00	231.94	232.78	0.36	263.69	264.10	0.16
Women's jeans	Women's Jeans / Fade	1 Piece	225.77	225.77	0.00	185.88	185.88	0.00	205.82	205.82	0.00
Dress material	Most often sold material / Plane / Faatufulhaa	1 Muh	33.87	39.04	15.27	29.50	29.50	0.00	31.68	34.27	8.16
Dress material	Most often sold material / Design / Faatufulhaa	1 Muh	38.00	38.00	0.00	28.67	28.67	0.00	33.33	33.33	0.00
Tailoring women's blouse	Sewing of blouse	1 Piece	75.00	75.00	0.00	75.00	75.00	0.00	75.00	75.00	0.00
Tailoring national dress	National dress / Unstrech Material	1 Piece	150.00	150.00	0.00	109.02	105.35	-3.36	129.51	127.67	-1.42
School shoes	School Shoes/ Girl / Most recently sold	1 Pair	192.57	192.20	-0.19	189.18	174.92	-7.54	190.87	183.56	-3.83
Sport shoes	Diadora / Indoor tennis shoes / Men	1 Pair	357.08	357.08	0.00	417.60	416.08	-0.36	387.34	386.58	-0.20
Nylon faivaan	Size 10	1 Pair	14.33	14.20	-0.89	15.65	15.65	0.00	14.99	14.93	-0.43
Men's sandals	Most recently sold brand	1 Pair	192.57	192.57	0.00	278.91	269.39	-3.41	235.74	230.98	-2.02
Women's sandals	Casual (home-wear)	1 Piece	209.11	209.11	0.00	146.15	147.31	0.79	177.63	178.21	0.33
Housing											
Kerosene oil	Kerosene oil	1 Ltr	16.56	16.56	0.00	16.93	17.25	1.85	16.75	16.90	0.93
Cooking gas	Cooking gas / Excluding Transport cost	13 Kg	390.00	390.00	0.00	290.00	291.25	0.43	340.00	340.63	0.18
Cement	Cement bag	50 kg	106.46	105.51	-0.89	123.63	122.60	-0.84	115.04	114.05	-0.86
Plywood	3 mm	1 Piece	129.58	159.10	22.78	113.83	113.83	0.00	121.71	136.46	12.13
Roofing sheet	0.6 mm / 1 feet	1 Piece	30.24	30.24	0.00	35.67	36.06	1.11	32.95	33.15	0.60
Construction charges	thakethi dheegen / in ground floor / aadhaige elhi 1 sq foot		5.18	5.18	0.00	4.13	4.13	0.00	4.65	4.65	0.00
Transport											
Taxi fare	Taxi Fare	Per trip	20.00	20.00	0.00	25.63	28.13	9.76	22.81	24.06	5.48
Motorcycle	Honda Wave 125 H	1 Piece	48,024.00	50,456.00	5.06	50,637.00	52,258.33	3.20	49,330.50	51,357.17	4.11
Petrol	Petrol	1 Ltr	15.02	15.67	4.33	16.38	16.54	0.99	15.70	16.10	2.59
Miscellaneous											
Haircut-female	Female Hair Cut	Per Person	161.33	161.33	0.00	16.25	16.25	0.00	88.79	88.79	0.00
Haircut-men	Male Hair Cut	Per Person	58.50	59.75	2.14	13.75	13.75	0.00	36.13	36.75	1.73
Sanitary pads	Riaa	1 Packet	14.15	13.81	-2.43	16.17	16.04	-0.76	15.16	14.93	-1.54
Soap	Lux Soap	100 Gram	6.17	6.59	6.83	5.52	5.67	2.56	5.85	6.13	4.81
Baby soap	Johnson Baby Soap	100 Gram	10.42	10.68	2.49	9.60	9.60	0.00	10.01	10.14	1.29
Facial cream	Fair & Lovely / Facial Cream	25 Gram	24.63	26.64	8.15	20.91	21.20	1.37	22.77	23.92	5.04
Baby lotion	Johnson & Johnson Baby Lotion	200 MI, bottle	36.23	35.25	-2.72	36.91	37.03	0.33	36.57	36.14	-1.18
Body lotion	Nivea Lotion	200 MI	43.67	44.70	2.37	39.09	39.09	0.00	41.38	41.90	1.25
Body lotion	Enchanteaur Lotion	200 MI	36.60	36.61	0.01	38.97	38.89	-0.20	37.78	37.75	-0.10
Baby cologne	Baby Cheramyl Cologne	175 ml	35.01	35.37	1.04	28.70	28.70	0.00	31.85	32.04	0.57
Cologne	Splash	200 MI	24.76	24.84	0.33	27.60	27.49	-0.39	26.18	26.17	-0.05
Cologne	Loviline	175 ml	28.63	28.23	-1.39	25.81	26.09	1.06	27.22	27.16	-0.23
Hair cream	Max	175 ml	35.26	34.99	-0.79	33.53	33.53	0.00	34.40	34.26	-0.40
Hair cream	Elite	175 ml	36.72	37.10	1.04	37.88	37.88	0.00	37.30	37.49	0.51
Hair cream	Gatsby	175 ml	23.18	23.16	-0.07	25.06	25.06	0.00	24.12	24.11	-0.03
Hair oil	Bertolli	100 MI,bottle	30.50	30.50	0.00	28.93	29.10	0.58	29.72	29.80	0.28
Shampoo	Emerone	200 MI	26.26	26.24	-0.08	27.20	27.54	1.22	26.73	26.89	0.58
Shampoo	Head & shoulders	200 MI	41.55	39.22	-5.60	39.72	40.05	0.84	40.63	39.64	-2.46
Shampoo	Pantene Pro vitamin	200 MI	38.46	37.63	-2.17	37.18	36.97	-0.56	37.82	37.30	-1.38
Toothpaste	Aqua fresh,	50 MI	16.06	15.44	-3.82	16.30	16.51	1.26	16.18	15.97	-1.26
Toothpaste	Colgate	50 MI	14.69	14.07	-4.20	14.11	14.88	5.45	14.40	14.47	0.52

Annex 2: Average annual Prices of Items which showed a significant change, CPI National, Male' & Atolls, March 2012

Description	Specification	Unit	National - Annualized			Male' - Annualized			Atolls - Annualized		
			Average 12 monthly price			Average 12 monthly price			Average 12 monthly price		
			Apr 2010- Mar 2011	Apr 2011- Mar 2012	% Chn	Apr 2010- Mar 2011	Apr 2011- Mar 2012	% Chn	Apr 2010- Mar 2011	Apr 2011- Mar 2012	% Chn
Food											
Biscuits	Cream Cracker, Khong Guan	200 gram, packet	9.41	12.22	29.81	8.97	12.13	35.17	9.85	12.31	24.92
Biscuits	Marie Biscuit	400 Gram	16.92	20.68	22.22	15.70	19.74	25.75	18.14	21.62	19.17
Bread	Small Bread	1 Piece	9.91	11.85	19.63	10.22	12.36	20.96	9.60	11.35	18.22
Bread	Large	1 Piece	17.21	19.28	12.02	20.21	23.21	14.85	14.22	15.36	8.01
Bread spread	Chocolate Crumpy	225 Gram	30.16	39.76	31.82	36.50	37.67	3.21	23.82	41.85	75.65
Butter bun	butter buns / Packed	1 Piece	3.05	4.35	42.54	3.52	4.03	14.39	2.58	4.66	81.03
Noodles	Mamee Noodles / Packet	85 Gram	3.70	4.45	20.11	3.49	4.11	17.86	3.92	4.78	22.12
Chicken sausage	Chicken Sausage / Packed	340 Gram	12.98	23.05	77.56	16.21	21.51	32.71	9.75	24.58	152.14
Frozen chicken	Frozen chicken / Whole chicken / Pre packed	1 kg	41.93	55.89	33.31	37.92	53.49	41.08	45.94	58.29	26.89
Egg	Chicken egg / Imported	1 Piece	1.55	1.81	17.32	1.48	1.74	17.68	1.61	1.89	16.98
Baby food - cereal	Nestum / Wheat & Honey	250 Gram / Tin	37.04	45.33	22.39	36.63	46.24	26.26	37.46	44.42	18.60
Baby food - cereal	Promina / Banana	250 Gram / Packet	17.65	19.60	11.07	16.83	19.16	13.84	18.47	20.05	8.55
Baby milk powder	Aniface	450 Gram / Tin	116.68	164.36	40.87	130.82	163.48	24.96	102.53	165.24	61.16
Baby milk powder	S.M.A / Progress	450 Gram / Tin	102.26	123.73	21.00	111.05	120.03	8.09	93.46	127.43	36.35
Milk powder	Coast	1800 Gram, tin	202.24	254.93	26.05	199.56	248.52	24.53	204.92	261.34	27.54
Milk powder	Nido	1800 Gram / Tin	185.26	254.45	37.35	192.70	258.59	34.19	177.81	250.31	40.77
Condensed milk	Double Peach	397Gram, tin	11.81	14.84	25.65	11.49	14.46	25.89	12.13	15.21	25.42
Majerine	Daisy brand tub / Small	250 Gram	19.36	25.20	30.16	19.50	25.16	29.07	19.23	25.24	31.26
Cooking oil	Bermoli Oil	2 Ltr	47.35	67.70	42.98	45.95	65.70	42.99	48.76	69.70	42.96
Cooking oil	Sun Flower Oil	2 Ltr	75.61	96.42	27.51	73.98	99.47	34.47	77.25	93.36	20.85
Orange	Fresh Orange	1 Piece	3.92	4.47	14.02	3.59	4.00	11.61	4.26	4.94	16.05
Canned mixed fruits	Canned Mixed Fruit / Small	398 Gram	24.98	29.86	19.53	25.01	29.81	19.21	24.95	29.90	19.86
Canned pine Apple	Canned Pine AQPple	567 Gram	15.50	21.25	37.08	15.14	20.71	36.76	15.86	21.79	37.39
lemon	Imported lemon	1 Piece	1.91	2.13	11.28	1.84	2.05	11.50	1.98	2.20	11.08
Green chilli	Green Chilli / Imported	100 Gram	8.49	14.58	71.78	9.50	7.53	-20.65	7.48	21.63	189.08
Tomato	Fresh Tomato	1Kg	24.85	33.83	36.14	30.06	33.35	10.93	19.64	34.31	74.72
Carrot	Fresh Carrot	1 kg	20.29	34.20	68.50	25.70	29.42	14.46	14.89	38.97	161.78
Cabbage	Fresh Cabbage	1 kg	21.06	32.98	56.61	27.99	29.14	4.08	14.13	36.83	160.70
Beans	Fresh Beans	1 kg	38.49	62.68	62.87	50.10	56.20	12.18	26.88	69.17	157.36
Canned baked beans	Baked Beans / Canned	400 Gram	11.26	13.46	19.50	10.90	13.25	21.52	11.62	13.67	17.61
Dhal	Yellow Coloured Dhal	1 kg	43.47	48.87	12.40	43.27	47.04	8.70	43.68	50.70	16.07
Curry powder	Fish curry powder / Packed locally	50 Gram	5.27	6.73	27.71	5.02	6.41	27.60	5.52	7.05	27.81
Curry powder	Chicken curry powder / Packed locally	50 Gram	4.70	6.71	42.82	5.01	6.48	29.25	4.39	6.94	58.33
Chilli powder	Dried Chilli (Hikimirus) / Loose	1 kg	55.46	76.78	38.45	52.13	77.45	48.58	58.79	76.11	29.47
Chilli powder	Chillie Powder / Packed Locally	50 Gram	5.26	6.91	31.31	5.01	6.39	27.57	5.51	7.43	34.71
Onion	Imported Onion	1 kg	20.01	17.11	-14.48	18.76	14.78	-21.21	21.25	19.44	-8.54
Tea leaves-tea bag	Today's Taste / 100 tea bag	200 Gram	24.47	31.75	29.75	24.59	32.04	30.26	24.35	31.47	29.23
Tea leaves-tea bag	Melesna / 100 tea bag	200 Gram	22.29	34.30	53.92	24.86	37.55	51.03	19.71	31.06	57.57
Tea leaves-tea bag	Akbar / 100 tea bag	200 Gram	20.00	33.71	68.54	24.64	33.46	35.78	15.36	33.96	121.10
Coffee	Nescafe, Cafe' soluble coffee / Canned	50 Gram	31.05	38.70	24.63	30.80	39.21	27.34	31.30	38.18	21.97
Juice-Sunquick	Sunquick / Orange Juice / Bottled	840 Ml	57.74	68.71	18.99	56.01	68.37	22.06	59.48	69.05	16.10
Juice-FosterClark	FosterClark / Powdered Juice / Bottled	750 Gram	54.73	63.67	16.33	54.49	63.35	16.26	54.98	63.99	16.39
Milo	Nestle Milo Powder / Canned	400 Gram	52.48	74.61	42.16	52.47	77.38	47.46	52.49	71.85	36.87
Candy	Solano	1 Piece / 25 Gram	0.38	0.44	16.72	0.43	0.45	5.97	0.33	0.43	30.81
Coke	Dubai coke / Canned	300 Ml	7.32	10.07	37.51	7.00	10.02	43.21	7.65	10.12	32.30
Coke	Coka Cola / Large Bottle	1500 Ml	23.13	29.60	27.94	23.74	28.71	20.93	22.53	30.48	35.32
Aracanut	Raw Aracanut / Uncut / Loose	1 kg	51.74	96.96	87.39	47.33	96.55	104.01	56.16	97.37	73.38
Cigarette	Marlboro	20 Piece / 1 Pack	19.79	28.13	42.15	19.72	28.35	43.77	19.86	27.91	40.55
Cigarette	Benson	20 Piece / 1 Pack	17.33	26.33	51.97	18.83	28.25	50.04	15.83	24.41	54.27
Saltish short-eats	Handutu gulha	1 Piece	1.32	1.60	20.92	1.35	1.54	13.54	1.30	1.67	28.63
Sweet short-eats	Foni folhi	1 Piece	1.70	2.18	28.70	2.00	2.18	8.96	1.39	2.19	57.07
Sauce	Tomato Sauce / life Brand	320 Gram / Bottled	10.45	12.38	18.53	10.11	12.59	24.49	10.78	12.18	12.94
Sauce	Chillie Sauce / life Brand	335 Gram / Bottled	11.04	13.52	22.47	11.02	14.33	30.09	11.05	12.70	14.87
Sauce	Chillie & Garlic Sauce / life Brand	320 Gram / Bottled	11.86	14.47	22.01	11.94	15.28	28.03	11.79	13.66	15.92
Fish											
Canned fish in oil	Felivaru canned fish / Chunk in Oil	185 Gram	15.50	18.41	18.75	15.15	17.95	18.48	15.85	18.87	19.00
Canned fish in brine	Felivaru Canned Fish / Chunk in Brine	185 Gram	13.68	16.70	22.09	13.53	16.76	23.84	13.82	16.64	20.37
Smoked fish	Smoked Fish (Valhoamas) / Loose	1 kg	50.06	117.21	134.15	60.53	116.92	93.15	39.58	117.50	196.84
Clothing and Footwear											
Mens t-shirt	Men Shirt / Most Sold Brand	1 Piece	150.76	181.46	20.36	155.14	173.34	11.73	146.39	189.57	29.50
Mens shirt	Men T-Shirt / Most Sold material	1 Piece	160.60	196.47	22.34	167.57	198.05	18.19	153.63	194.90	26.86
Mens trousers	Men's Trousers / Long	1 Piece	197.07	223.32	13.32	178.33	221.35	24.12	215.82	225.30	4.39
Mens jeans	Mend's Jeans / Most Sold Material	1 Piece	215.17	247.70	15.11	217.36	265.81	22.29	212.99	229.59	7.79
Dress material	Most often sold material / Plane / Faatufulhaa	1 Muh	24.11	29.50	22.35	25.00	30.67	22.70	23.22	28.32	21.97
Tailoring women's blouse	Sweing of blouse	1 Piece	55.44	72.83	31.37	70.00	74.38	6.25	40.88	71.28	74.40
School shoes	School Shoes/ Girl / Most recently sold	1 Pair	138.69	166.88	20.33	136.81	170.81	24.86	140.57	162.94	15.92
Sport shoes	Diadora / Indoor tennis shoes / Men	1 Pair	293.06	368.82	25.85	272.50	321.58	18.01	313.63	416.07	32.66
Men's sandals	Most recently sold brand	1 Pair	184.31	225.29	22.23	151.11	178.35	18.02	217.51	272.23	25.16
Women's sandals	Casual (home-wear)	1 Piece	132.02	155.01	17.42	136.25	167.00	22.57	127.80	143.03	11.92
Housing											
Kerosine oil	Kerosine oil	1 Ltr	12.44	15.75	26.63	11.79	15.28	29.58	13.09	16.23	23.97

Description	Specification	Unit	National - Annualized			Male' - Annualized			Atolls - Annualized		
			Average 12 monthly price			Average 12 monthly price			Average 12 monthly price		
			Apr 2010- Mar 2011	Apr 2011- Mar 2012	% Chn	Apr 2010- Mar 2011	Apr 2011- Mar 2012	% Chn	Apr 2010- Mar 2011	Apr 2011- Mar 2012	% Chn
Cooking gas	Cooking gas / Excluding Transport cost	13 Kg	249.82	329.47	31.88	296.00	377.17	27.42	203.65	281.77	38.36
Cement	Cement bag	50 kg	85.89	106.63	24.15	80.75	98.06	21.43	91.02	115.20	26.56
Plywood	3 mm	1 Piece	102.21	121.28	18.66	111.98	129.61	15.75	92.44	112.94	22.18
Roofing sheet	0.6 mm / 1 feet	1 Piece	21.52	27.32	26.95	25.73	27.35	6.31	17.32	27.29	57.63
Transport											
Motorcycle	Honda Wave 125 H	1 Piece	36,583.33	47,506.25	29.86	39,583.33	46,489.67	17.45	33,583.33	48,522.83	44.48
Petrol	Petrol	1 Ltr	10.35	15.89	53.61	11.14	15.85	42.35	9.56	15.93	66.73
Miscellaneous											
Facial cream	Fair Plus / Facial Cream	25 Gram	13.60	19.98	46.90	15.00	33.71	124.70	12.20	19.98	63.73
Baby lotion	Johnson & Johnson Baby Lotion	200 MI, bottle	29.17	33.85	16.07	29.71	46.13	55.27	28.63	34.00	18.77
Body lotion	Gosh Lotion	200 MI	36.64	48.00	30.99	44.06	32.43	-26.39	29.23	48.00	64.22
Baby cologne	Baby Cheramy Colone	175 ml	19.08	30.38	59.17	19.67	23.02	17.03	18.50	28.32	53.06
Cologne	Splash	200 MI	19.85	23.85	20.13	19.30	26.53	37.49	20.40	24.68	20.96
Cologne	Loviline	175 ml	20.59	24.92	21.02	20.71	32.51	56.99	20.48	23.31	13.83
Hair cream	Max	175 ml	26.03	31.74	21.93	25.89	34.17	31.96	26.17	30.97	18.35
Hair cream	Elite	175 ml	19.50	33.44	71.48	23.56	28.63	21.53	15.45	32.72	111.78
Hair oil	Bertolli	100 MI,bottle	25.11	28.40	13.12	28.89	23.67	-18.06	21.33	28.18	32.12
Shampoo	Emerone	200 MI	17.78	24.22	36.21	16.39	38.63	135.67	19.17	24.76	29.18
Shampoo	Head & shoulders	200 MI	31.82	37.14	16.72	30.98	33.19	7.11	32.66	35.65	9.18
Toothpaste	Close Up	50 MI	13.81	15.81	14.49	13.69	13.81	0.85	13.92	15.81	13.54

Annex 3: Average month on month prices of Items which showed a significant change, CPI National, Male' & Atolls, March 2012

Description	Specification	Unit	National - Month on Month			Male' - Month on Month			Atolls - Month on Month		
			Average Price		% Chn	Average Price		% Chn	Average Price		% Chn
			Mar-11	Mar-12		Mar-11	Mar-12		Mar-11	Mar-12	
Food											
Biscuits	Cream Cracker, Khong Guan	200 gram, packet	10.69	13.29	24.29	11.00	13.37	21.55	10.38	13.20	27.20
Biscuits	Marie Biscuit	400 Gram	17.11	23.18	35.53	15.89	22.19	39.65	18.33	24.18	31.95
Bread	Small Bread	1 Piece	10.62	12.59	18.57	11.89	12.54	5.44	9.35	12.65	35.26
Bread	Large	1 Piece	18.52	19.51	5.30	22.80	23.18	1.66	14.25	15.83	11.14
Bread spread	Chocolate Crumpy	225 Gram	35.18	43.57	23.86	36.56	42.83	17.17	33.80	44.31	31.09
Butter bun	butter buns / Packed	1 Piece	3.02	4.32	43.07	3.75	4.12	9.74	2.29	4.52	97.74
Bun	Small Buns/ Un packed	1 Piece	0.79	0.76	-3.63	0.46	0.54	18.58	1.13	0.98	-12.67
Rice-Basmati	Basmati Rice / Pre Packed	1 kg	26.09	28.70	9.98	24.88	27.87	12.04	27.31	29.52	8.09
Noodles	Mamee Noodles / Packet	85 Gram	3.83	4.55	18.87	3.70	4.15	12.26	3.96	4.95	25.05
Corn flake	Kellogg's / Wheat and Honey	300 Gram	43.00	37.50	-12.78	41.00	44.01	7.34	45.00	31.00	-31.11
Frozen chicken	Frozen chicken / Whole chicken / Pre packed	1 kg	42.81	59.33	38.58	41.00	56.93	38.84	44.63	61.73	38.34
Baby food - cereal	Nestum / Wheat & Honey	250 Gram / Tin	39.28	48.07	22.37	40.10	48.08	19.89	38.46	48.06	24.97
Baby food - cereal	Promina / Banana	250 Gram / Packet	17.66	20.98	18.78	17.00	20.61	21.26	18.33	21.35	16.48
Baby milk powder	Lactogen	450 Gram, tin	64.84	75.46	16.38	62.50	73.99	18.39	67.19	76.94	14.51
Baby milk powder	Aniface	450 Gram / Tin	133.95	174.39	30.19	135.40	174.61	28.96	132.50	174.17	31.45
Milk powder	Coast	1800 Gram, tin	216.16	264.59	22.40	221.38	255.98	15.63	210.95	273.19	29.50
Milk powder	Anchor Milk	1800 Gram / Tin	222.20	258.72	16.43	229.71	276.24	20.26	214.69	241.19	12.34
Milk powder	Nido	1800 Gram / Tin	198.78	271.89	36.78	200.00	269.36	34.68	197.56	274.42	38.91
Condensed milk	Double Peach	397Gram, tin	12.17	15.64	28.50	12.15	14.94	22.92	12.19	16.34	34.06
Condensed milk	Cow Bell	397 Gram / Tin	11.83	15.34	29.72	11.43	14.98	31.05	12.22	15.70	28.47
Margarine	Daisy brand tub / Small	250 Gram	22.64	27.76	22.62	23.30	28.01	20.22	21.99	27.52	25.17
Cooking oil	Bemoli Oil	2 Ltr	58.14	65.68	12.97	62.14	60.75	-2.24	54.13	70.61	30.44
Cooking oil	Sun Flower Oil	2 Ltr	82.03	104.92	27.90	80.67	106.74	32.32	83.40	103.11	23.64
Green chilli	Green Chilli / Imported	100 Gram	13.08	18.80	43.70	9.50	7.08	-25.51	16.67	30.52	83.14
Tomato	Fresh Tomato	1Kg	29.94	33.60	12.20	29.89	30.75	2.88	30.00	36.45	21.49
Garlic	Garlic	100 Gram	8.24	5.26	-36.14	10.25	4.57	-55.39	6.23	5.95	-4.50
Potato	Imported Potato	1 kg	12.92	10.80	-16.44	11.36	9.73	-14.38	14.48	11.87	-18.06
Canned baked beans	Baked Beans / Canned	400 Gram	11.57	14.34	23.94	11.83	14.36	21.33	11.30	14.32	26.67
Salt	Fine Salt / Packed	500 Gram	4.81	5.46	13.54	4.65	5.26	13.06	4.97	5.67	13.99
Curry powder	Fish curry powder / Packed locally	50 Gram	5.69	7.10	24.88	5.75	6.66	15.86	5.63	7.54	34.10
Curry powder	Chicken curry powder / Packed locally	50 Gram	5.65	7.07	25.13	5.75	6.75	17.39	5.56	7.40	33.13
Dried chilli	Dried Chilli (Hikimirus) / Loose	1 kg	57.50	89.08	54.92	60.00	96.50	60.83	55.00	81.67	48.48
Chilli powder	Chillier Powder / Packed Locally	50 Gram	5.94	7.33	23.43	5.83	6.70	14.78	6.05	7.97	31.78
Onion	Imported Onion	1 kg	18.15	10.98	-39.50	11.41	9.97	-12.64	24.90	12.00	-51.80
Tea leaves-tea bag	Today's Taste / 100 tea bag	200 Gram	25.88	34.54	33.46	26.22	34.36	31.04	25.54	34.72	35.94
Tea leaves-tea bag	Melesna / 100 tea bag	200 Gram	29.25	37.97	29.79	33.00	44.93	36.15	25.50	31.00	21.57
Tea leaves-tea bag	Akbar / 100 tea bag	200 Gram	26.10	36.63	40.36	26.20	35.75	36.46	26.00	37.51	44.29
Coffee	Nescafe, Cafe' soluble coffee / Canned	50 Gram	32.73	41.28	26.10	33.33	41.79	25.36	32.13	40.77	26.87
Juice-Sun quick	Sun quick / Orange Juice / Bottled	840 Ml	60.04	74.82	24.62	60.11	74.28	23.57	59.96	75.35	25.67
Juice-Foster Clark	Foster Clark / Powdered Juice / Bottled	750 Gram	55.51	66.70	20.16	54.33	66.45	22.31	56.68	66.94	18.11
Milo	Nestle Milo Powder / Canned	400 Gram	59.75	84.11	40.77	62.78	86.22	37.34	56.72	81.99	44.56
Candy	Solano	1 Piece / 25 Gram	0.50	0.38	-24.34	0.64	0.32	-50.52	0.36	0.44	22.27
Coke	Dubai coke / Canned	300 Ml	7.69	10.68	39.00	7.83	10.90	39.19	7.54	10.46	38.80
Coke	Coca Cola / Large Bottle	1500 Ml	25.69	31.13	21.20	26.13	30.26	15.82	25.25	32.01	26.77
Aracanut	Raw Aracanut / Uncut / Loose	1 kg	66.50	102.95	54.81	70.00	92.61	32.29	63.00	113.29	79.82
Cigarette	Marlboro	20 Piece / 1 Pack	19.89	38.93	95.75	19.83	39.44	98.85	19.94	38.41	92.66
Cigarette	Benson	20 Piece / 1 Pack	18.99	35.83	88.67	18.60	39.44	112.03	19.38	32.22	66.25
Saltish short-eats	Handulu gulha	1 Piece	1.58	1.42	-10.53	1.50	1.17	-22.22	1.67	1.67	0.00
Sweet short-eats	Foni folhi	1 Piece	2.06	2.35	14.49	2.00	2.37	18.67	2.11	2.33	10.53
Jam	Tova Brand / Bottle	450 Gram	22.66	25.88	14.21	23.00	25.57	11.18	22.32	26.18	17.32
Tomato paste	Tomato Paste / Small can	70 Gram	2.71	3.05	12.65	2.50	2.98	19.08	2.92	3.13	7.15
Sauce	Tomato Sauce / life Brand	320 Gram / Bottled	10.74	14.04	30.77	10.71	15.40	43.74	10.76	12.68	17.86
Sauce	Chili Sauce / life Brand	335 Gram / Bottled	11.83	15.35	29.77	12.50	17.06	36.52	11.15	13.63	22.20
Sauce	Chili & Garlic Sauce / life Brand	320 Gram / Bottled	12.74	15.91	24.88	13.50	17.49	29.55	11.98	14.33	19.62
Fish											
Canned fish in oil	Felivaru canned fish / Chunk in Oil	185 Gram	17.00	18.90	11.17	16.85	18.16	7.75	17.15	19.64	14.52
Canned fish in brine	Felivaru Canned Fish / Chunk in Brine	185 Gram	15.36	17.43	13.51	15.78	17.09	8.34	14.93	17.77	18.97
Smoked fish	Smoked Fish (Valhoamas) / Loose	1 kg	83.18	119.37	43.50	66.36	148.73	124.13	100.00	90.00	-10.00
Clothing and Footwear											
Men's t-shirt	Men Shirt / Most Sold Brand	1 Piece	162.60	197.34	21.36	171.67	182.80	6.49	153.54	211.88	37.99
Men's shirt	Men T-Shirt / Most Sold material	1 Piece	178.33	203.67	14.21	175.00	219.95	25.69	181.67	187.39	3.15
School uniform	School Uniform / Boys / Medium size 14	1 Piece	76.25	121.90	59.87	102.50	121.90	18.93	50.00	121.90	143.80
Men's trousers	Men's Trousers / Long	1 Piece	210.31	237.00	12.69	203.33	224.60	10.46	217.29	249.40	14.78
Men's jeans	Mend's Jeans / Most Sold Material	1 Piece	226.04	264.10	16.84	243.33	295.43	21.41	208.75	232.78	11.51
Women's jeans	Women's Jeans / Fade	1 Piece	183.33	205.82	12.27	195.00	225.77	15.78	171.67	185.88	8.28
Dress material	Most often sold material / Plane / Faatufulhaa	1 Muh	26.25	34.27	30.55	25.00	39.04	56.15	27.50	29.50	7.27
School shoes	School Shoes/ Girl / Most recently sold	1 Pair	155.00	183.56	18.43	145.00	192.20	32.55	165.00	174.92	6.01
Men's sandals	Most recently sold brand	1 Pair	203.13	230.98	13.71	145.00	192.57	32.80	261.25	269.39	3.12
Women's sandals	Casual (home-wear)	1 Piece	138.75	178.21	28.44	145.00	209.11	44.22	132.50	147.31	11.18
Housing											
Kerosene oil	Kerosene oil	1 Ltr	13.09	16.90	29.09	12.00	16.56	38.00	14.19	17.25	21.55
Cooking gas	Cooking gas / Excluding Transport cost	13 Kg	285.50	340.63	19.31	296.00	390.00	31.76	275.00	291.25	5.91

Description	Specification	Unit	National - Month on Month			Male' - Month on Month			Atolls - Month on Month		
			Average Price			Average Price		% Chn	Average Price		
			Mar-11	Mar-12	% Chn	Mar-11	Mar-12		Mar-11	Mar-12	% Chn
Cement	Cement bag	50 kg	88.67	114.05	28.63	82.50	105.51	27.88	94.83	122.60	29.28
Plywood	3 mm	1 Piece	113.04	136.46	20.72	112.75	159.10	41.10	113.33	113.83	0.44
Roofing sheet	0.6 mm / 1 feet	1 Piece	24.33	33.15	36.24	28.00	30.24	8.00	20.67	36.06	74.50
Transport											
Taxi fare	Taxi Fare	Per trip	21.25	24.06	13.24	20.00	20.00	0.00	22.50	28.13	25.00
Motorcycle	Honda Wave 125 H	1 Piece	40,916.67	51,357.17	25.52	40,500.00	50,456.00	24.58	41,333.33	52,258.33	26.43
Cleaning of motorcycle	Full cycle	Per vehicle	41.51	49.52	19.29	70.00	82.50	17.86	13.03	16.54	26.97
Miscellaneous											
Haircut-men	Male Hair Cut	Per Person	21.88	36.75	68.00	32.50	59.75	83.85	11.25	13.75	22.22
Soap	Lux Soap	100 Gram	4.80	6.13	27.62	4.61	6.59	42.98	4.99	5.67	13.44
Facial cream	Fair & Lovely / Facial Cream	25 Gram	18.21	23.92	31.36	15.67	26.64	70.01	20.75	21.20	2.17
Baby lotion	Johnson & Johnson Baby Lotion	200 MI, bottle	31.08	36.14	16.27	31.25	35.25	12.80	30.92	37.03	19.78
Body lotion	Enchanteaur Lotion	200 MI	30.19	37.75	25.02	27.43	36.61	33.46	32.96	38.89	18.00
Baby cologne	Baby Cheramy Cologne	175 ml	27.00	32.04	18.65	30.00	35.37	17.91	24.00	28.70	19.57
Cologne	Splash	200 MI	20.39	26.17	28.33	19.50	24.84	27.39	21.28	27.49	29.18
Cologne	Loviline	175 ml	21.28	27.16	27.65	22.00	28.23	28.31	20.55	26.09	26.94
Hair cream	Max	175 ml	29.42	34.26	16.46	31.00	34.99	12.85	27.83	33.53	20.47
Hair cream	Elite	175 ml	29.25	37.49	28.16	31.00	37.10	19.67	27.50	37.88	37.73
Hair cream	Gatsby	175 ml	21.01	24.11	14.75	17.50	23.16	32.34	24.53	25.06	2.19
Shampoo	Emerone	200 MI	21.30	26.89	26.24	21.00	26.24	24.95	21.60	27.54	27.50
Shampoo	Head & shoulders	200 MI	33.21	39.64	19.36	33.63	39.22	16.65	32.79	40.05	22.13
Shampoo	Pantene Pro vitamin	200 MI	30.08	37.30	23.99	28.50	37.63	32.04	31.67	36.97	16.74
Toothpaste	Colgate	50 MI	12.26	14.47	18.06	11.33	14.07	24.13	13.18	14.88	12.84

	Consumer Price Index - CPI (June 2004 =100)																		% change in Consumer Price Index - CPI																	
	Total	Total Excluding Fish	1. Food and beverages Including Fish	Food and beverages Excluding Fish	1.1 Fish	2. Tobacco	3. Clothing & footwear	4. Housing, water, electricity, gas & other fuels	Actual rentals for housing	5. Furnishing, household equipments & routine maintenance of	6. Health	7. Transport	8. Communication	9. Recreation & culture	10. Education	11. Hotels, cafes & restaurants	12. Miscellaneous goods & services	13. Religious activity	Total	Total Excluding Fish	Food and beverages Including Fish	Food and beverages Excluding Fish	Fish	Tobacco	Clothing & footwear	Housing, water, electricity, gas & other fuels	Actual rentals for housing	Furnishing, household equipments & routine maintenance of	Health	Transport	Communication	Recreation & culture	Education	Hotels, cafes & restaurants	Miscellaneous goods & services	Religious activity
2009	132.09	132.12	150.02	152.96	131.51	115.29	112.23	136.55	143.81	134.97	142.90	149.46	65.87	93.99	135.05	141.33	116.65	100.00	3.98	4.98	1.48	3.90	-13.35	-2.09	2.98	7.57	14.29	9.64	2.54	0.47	-0.46	3.52	23.75	2.57	5.99	0.00
2010	140.82	140.83	157.86	160.72	140.70	113.54	114.77	145.73	153.04	143.62	155.76	154.82	65.96	98.73	144.74	145.89	122.48	100.00	6.61	6.59	5.23	5.07	6.98	-1.51	2.26	6.72	6.42	6.41	9.00	3.59	0.14	5.04	7.18	3.23	5.00	0.00
2011	158.89	155.02	188.81	180.70	239.89	145.24	128.41	150.45	161.11	157.15	170.00	175.52	65.98	101.09	167.19	168.68	133.03	100.00	12.83	10.08	19.60	12.43	70.50	27.91	11.89	3.24	5.27	9.42	9.15	13.37	0.02	2.39	15.51	15.62	8.61	0.00
April 2010 to March 2011	142.98	142.70	161.50	163.52	148.75	114.62	115.21	147.52	155.01	145.89	157.57	156.55	65.96	99.91	151.29	146.39	123.37	100.00	15.99	11.70	25.04	13.93	102.01	50.43	16.91	2.26	4.23	12.84	9.69	17.31	-0.10	0.75	14.31	25.43	13.06	0.00
April 2011 to March 2012	165.84	159.40	201.94	186.30	300.49	172.43	134.70	150.85	161.57	164.62	172.84	183.64	65.89	100.66	172.95	183.62	139.48	100.00	19.49	12.35	32.50	13.71	159.49	86.70	21.40	3.41	4.36	18.88	6.39	21.02	-0.48	-2.06	13.77	42.67	21.07	0.00
Mar 2012 /Mar 2012																		100.00	19.49	12.35	32.50	13.71	159.49	86.70	21.40	3.41	4.36	18.88	6.39	21.02	-0.48	-2.06	13.77	42.67	21.07	0.00
2011 Mar	145.63	145.19	164.41	165.94	154.79	119.60	117.79	147.99	158.47	152.40	163.47	159.68	65.96	102.38	167.19	145.72	125.27	100.00	0.28	-0.17	0.34	-0.94	9.95	0.32	1.18	-0.69	-8.43	2.93	1.70	0.95	0.00	0.30	0.00	0.00	1.02	0.00
Apr	151.28	147.58	177.85	169.78	228.68	121.53	123.51	148.37	158.74	150.65	164.37	170.88	65.96	99.85	167.19	158.03	128.40	100.00	3.88	1.64	8.17	2.31	47.74	1.61	4.86	0.26	0.17	-1.15	0.55	7.02	0.00	-2.47	0.00	8.45	2.49	0.00
May	156.49	151.54	188.44	177.08	260.04	129.35	126.35	149.69	158.95	152.86	171.15	178.02	66.36	99.98	167.19	162.51	129.21	100.00	3.44	2.68	5.96	4.30	13.71	6.44	2.29	0.89	0.13	1.47	4.13	4.18	0.60	0.13	0.00	2.83	0.63	0.00
June	159.06	153.30	192.22	178.36	279.58	141.23	128.98	150.04	159.34	153.27	170.66	178.30	66.36	100.08	167.19	166.11	131.64	100.00	1.64	1.16	2.01	0.73	7.51	9.18	2.08	0.23	0.25	0.26	-0.29	0.16	0.00	0.10	0.00	2.22	1.88	0.00
July	162.93	156.05	198.73	181.56	306.97	143.93	130.06	148.38	159.46	152.69	169.64	178.30	66.15	99.61	167.19	166.11	131.62	100.00	2.43	1.79	3.39	1.79	9.80	1.92	0.84	-1.11	0.08	-0.38	-0.60	0.00	-0.32	-0.47	0.00	0.00	-0.02	0.00
Aug	163.27	158.65	197.71	187.83	259.96	146.06	131.30	149.32	160.08	155.45	169.61	179.54	66.09	99.82	167.19	166.11	134.10	100.00	0.21	1.67	-0.52	3.45	-15.31	1.48	0.95	0.63	0.39	1.81	-0.02	0.70	-0.09	0.22	0.00	0.00	1.88	0.00
Sep	165.74	160.45	200.99	189.03	276.37	155.21	133.60	149.63	160.48	158.75	177.07	179.94	66.09	100.81	167.19	179.50	136.82	100.00	1.51	1.13	1.66	0.64	6.31	6.26	1.75	0.21	0.25	2.13	4.40	0.22	0.00	0.99	0.00	8.07	2.03	0.00
Oct	165.55	163.15	194.05	190.59	215.82	164.52	139.92	150.16	161.65	168.65	177.21	187.63	65.61	102.63	167.19	186.97	142.08	100.00	-0.11	1.68	-3.45	0.83	-21.91	6.00	4.73	0.35	0.73	6.23	0.08	4.27	-0.72	1.80	0.00	4.16	3.84	0.00
Nov	171.90	164.97	210.17	193.25	316.80	162.25	138.69	152.66	162.76	172.51	177.86	188.37	65.61	102.81	167.19	200.81	144.48	100.00	3.83	1.12	8.31	1.40	46.79	-1.38	-0.87	1.67	0.69	2.29	0.37	0.39	0.00	0.18	0.00	7.40	1.69	0.00
Dec	173.53	167.69	210.13	196.53	295.81	224.88	137.90	152.89	163.04	172.00	177.74	189.25	65.61	102.03	167.19	200.81	144.70	100.00	0.95	1.65	-0.02	1.69	-6.63	38.60	-0.57	0.15	0.17	-0.30	-0.07	0.47	0.00	-0.76	0.00	0.00	0.16	0.00
2012 Jan	173.40	163.18	219.06	192.38	387.21	228.71	141.53	153.04	164.20	177.74	172.37	190.86	65.61	99.90	190.21	203.24	147.93	100.00	-0.08	-2.69	4.25	-2.11	30.90	1.70	2.63	0.10	0.71	3.34	-3.02	0.85	0.00	-2.09	13.77	1.21	2.23	0.00
Feb	172.93	163.17	216.04	190.50	377.02	232.05	142.38	153.04	164.79	179.71	172.44	189.33	65.61	100.15	190.21	205.40	151.09	100.00	-0.27	-0.01	-1.38	-0.97	-2.63	1.46	0.60	0.00	0.36	1.11	0.04	-0.80	0.00	0.24	0.00	1.06	2.14	0.00
Mar	174.01	163.13	217.85	188.68	401.67	223.30	143.00	154.20	165.38	181.17	173.92	193.24	65.65	100.28	190.21	207.90	151.67	100.00	0.63	-0.03	0.84	-0.95	6.54	-3.77	0.44	0.76	0.36	0.81	0.86	2.07	0.05	0.13	0.00	1.22	0.38	0.00

Year	Month	Consumer Price Index - CPI (June 2004 =100)																	% change in CPI / Inflation Rate																			
		Total	Total Excluding Fish	1. Food and beverages Including Fish	Food and beverages Excluding Fish	1.1 Fish	2. Tobacco	3. Clothing & footwear	4. Housing, water, electricity, gas & other fuels	Actual rentals for housing	5. Furnishing, household equipments & routine maintenance of	6. Health	7. Transport	8. Communication	9. Recreation & culture	10. Education	11. Hotels, cafes & restaurants	12. Miscellaneous goods & services	13. Religious activity	Total	Total Excluding Fish	Food and beverages Including Fish	Food and beverages Excluding Fish	Fish	Tobacco	Clothing & footwear	Housing, water, electricity, gas & other fuels	Actual rentals for housing	Furnishing, household equipments & routine maintenance of	Health	Transport	Communication	Recreation & culture	Education	Hotels, cafes & restaurants	Miscellaneous goods & services	Religious activity	
Weights		48.90	46.48	13.39	10.97	2.42	0.93	2.45	12.30	7.17	2.85	2.76	2.92	3.84	2.10	1.51	0.77	2.96	0.11	48.90	46.48	13.39	10.97	2.42	0.93	2.45	12.30	7.17	2.85	2.76	2.92	3.84	2.10	1.51	0.77	2.96	0.11	
2009		130.21	130.13	151.57	155.95	131.68	111.35	109.30	131.18	143.81	129.43	151.16	153.56	61.32	88.34	150.19	141.33	118.07	100.00	4.53	5.48	0.52	2.93	-10.70	-1.80	3.21	7.82	14.29	20.94	2.25	0.98	-0.75	5.01	35.09	2.57	7.10	0.00	
2010		138.21	138.02	162.90	167.54	141.88	110.98	112.54	141.13	153.04	137.17	158.21	158.66	61.46	93.41	164.38	145.89	123.88	100.00	6.15	6.07	7.48	7.43	7.74	-0.33	2.96	7.59	6.42	5.98	4.66	3.32	0.23	5.74	9.44	3.23	4.93	0.00	
2011		153.79	150.03	195.36	188.60	226.03	141.21	127.04	145.24	159.87	142.94	174.92	180.47	61.61	91.43	194.52	168.68	133.07	100.00	11.27	8.70	19.93	12.57	59.31	27.24	12.89	2.91	4.46	4.20	10.56	13.74	0.24	-2.13	18.34	15.62	7.42	0.00	
April 2010 to March 2011		140.38	139.94	167.33	171.41	148.81	112.00	112.78	142.56	155.01	138.08	160.06	160.24	61.46	93.84	173.44	146.39	123.97	100.00	14.60	10.72	24.83	13.39	84.60	52.34	19.64	2.50	4.23	8.33	13.23	17.68	0.13	-2.86	16.81	25.43	14.04	0.00	
April 2011 to March 2012		160.87	154.95	208.87	194.36	274.69	170.62	134.93	146.13	161.57	149.58	181.24	188.58	61.54	91.15	202.60	183.62	141.37	100.00																			
Mar 2012 /Mar 2012																			20.17	14.15	32.15	13.58	126.17	95.35	27.55	2.96	4.36	20.78	15.19	20.18	-0.38	-0.78	16.62	42.67	28.27	0.00		
2011	Mar	142.88	142.24	169.94	173.20	155.16	115.06	116.35	144.58	158.47	138.75	165.66	162.29	61.46	94.03	194.52	145.72	122.42	100.00	0.63	0.20	1.30	-0.07	8.86	-0.70	1.41	0.10	0.17	0.54	1.71	0.14	0.00	-0.49	0.00	0.00	0.07	0.00	
	Apr	149.19	145.48	188.04	180.89	220.43	119.55	120.58	144.78	158.74	135.96	167.67	173.09	61.46	90.46	194.52	158.03	128.60	100.00	4.42	2.28	10.65	4.44	42.07	3.90	3.64	0.14	0.17	-2.01	1.21	6.65	0.00	-3.79	0.00	8.45	5.05	0.00	
	May	154.13	149.71	198.54	189.59	239.10	125.87	123.69	146.74	158.95	136.43	178.16	183.27	62.07	90.45	194.52	162.51	127.85	100.00	3.31	2.91	5.59	4.81	8.47	5.29	2.58	1.35	0.13	0.35	6.25	5.88	0.98	-0.02	0.00	2.83	-0.58	0.00	
	June	155.53	150.22	200.21	187.57	257.53	138.69	124.62	146.97	159.34	140.21	178.58	183.61	62.07	90.85	194.52	166.11	132.07	100.00	0.91	0.34	0.84	-1.07	7.71	10.19	0.75	0.16	0.25	2.77	0.24	0.19	0.00	0.45	0.00	2.22	3.30	0.00	
	July	155.63	149.23	204.88	188.64	278.54	139.34	125.94	143.41	159.46	140.95	172.95	183.61	61.99	87.83	194.52	166.11	132.76	100.00	0.06	-0.66	2.33	0.57	8.16	0.47	1.06	-2.42	0.08	0.53	-3.15	0.00	-0.13	-3.33	0.00	0.00	0.52	0.00	
	Aug	156.12	150.96	204.53	193.35	255.24	137.71	127.66	144.60	160.08	141.40	172.95	184.90	61.90	87.83	194.52	166.11	135.00	100.00	0.32	1.16	-0.17	2.50	-8.37	-1.18	1.36	0.83	0.39	0.31	0.00	0.71	-0.14	0.01	0.00	0.00	1.69	0.00	
	Sep	158.15	153.01	206.34	195.20	256.84	143.21	131.88	144.90	160.48	142.60	183.63	185.75	61.90	89.25	194.52	179.50	137.52	100.00	1.30	1.36	0.88	0.96	0.63	4.00	3.31	0.21	0.25	0.85	6.17	0.46	0.00	1.61	0.00	8.07	1.86	0.00	
	Oct	158.67	156.20	199.64	198.21	206.14	150.56	142.24	145.15	161.65	152.89	183.89	193.64	61.18	92.44	194.52	186.97	143.33	100.00	0.33	2.09	-3.25	1.54	-19.74	5.13	7.85	0.18	0.73	7.22	0.14	4.25	-1.17	3.58	0.00	4.16	4.23	0.00	
	Nov	164.11	157.80	215.54	200.14	285.37	152.48	142.06	146.62	162.76	156.06	184.90	194.86	61.18	92.55	194.52	200.81	145.75	100.00	3.42	1.02	7.96	0.98	38.44	1.28	-0.13	1.01	0.69	2.07	0.55	0.63	0.00	0.11	0.00	7.40	1.69	0.00	
	Dec	166.04	160.60	216.41	204.47	270.58	241.17	140.25	146.80	163.04	154.80	184.90	196.50	61.18	92.58	194.52	200.81	146.04	100.00	1.18	1.77	0.40	2.16	-5.18	58.16	-1.27	0.12	0.17	-0.80	0.00	0.84	0.00	0.03	0.00	0.00	0.20	0.00	
2012	Jan	170.86	161.93	225.81	200.10	342.43	236.92	145.11	147.05	164.20	161.18	188.14	195.83	61.18	93.24	226.83	203.24	153.35	100.00	2.90	0.83	4.34	-2.14	26.55	-1.76	3.46	0.17	0.71	4.12	1.75	-0.34	0.00	0.72	16.62	1.21	5.00	0.00	
	Feb	170.35	161.88	221.89	197.37	333.14	237.24	146.76	147.73	164.79	164.91	188.28	192.88	61.18	93.09	226.83	205.40	157.09	100.00	-0.30	-0.03	-1.73	-1.37	-2.71	0.13	1.14	0.47	0.36	2.31	0.07	-1.51	0.00	-0.16	0.00	1.06	2.44	0.00	
	Mar	171.69	162.36	224.58	196.73	350.93	224.77	148.41	148.85	165.38	167.58	190.82	195.05	61.23	93.30	226.83	207.90	157.04	100.00	0.79	0.30	1.21	-0.32	5.34	-5.26	1.12	0.76	0.36	1.62	1.35	1.13	0.09	0.23	0.00	1.22	-0.03	0.00	

Annex 6: Atolls - Consumer Price Index and Inflation rates by Major categories

	Consumer Price Index - CPI (June 2004 =100)																% change in Consumer Price Index - CPI															
	Total	Total Excluding Fish	1. Food and beverages Including Fish	Food and beverages Excluding Fish	1.1 Fish	Other Food	Non-alcoholic beverages	2. Tobacco	3. Clothing & footwear	4. Housing, water, electricity, gas & other fuels	5. Furnishings, household equipments & routine maintenance of	6. Health	7. Transport	8. Communication	9. Recreation & culture	10. Education	12. Miscellaneous goods & services	Total	Total Excluding Fish	Food and beverages Including Fish	Food and beverages Excluding Fish	Fish	Tobacco	Clothing & footwear	Housing, water, electricity, gas & other fuels	Furnishings, household equipments & routine maintenance of	Health	Transport	Communication	Recreation & culture	Education	Miscellaneous goods & services
Weights	51.10	48.96	19.92	17.78	2.14	15.88	1.90	1.83	3.51	7.18	2.44	2.66	2.14	1.98	2.83	1.63	4.96	51.10	48.96	19.92	17.78	2.14	1.83	3.51	7.18	2.44	2.66	2.14	1.98	2.83	1.63	4.96
2009	133.89	134.01	148.86	150.97	131.32	152.61	137.31	117.30	117.21	146.13	143.16	128.84	144.50	74.67	91.70	115.96	115.54	3.48	4.53	2.13	4.52	-16.16	-2.22	5.33	6.89	8.20	3.31	0.33	0.00	-4.51	8.10	5.21
2010	143.32	143.49	155.11	157.01	139.36	158.41	145.29	114.76	118.44	154.61	148.89	169.27	150.19	74.67	93.20	119.92	121.37	7.04	7.08	4.20	4.00	6.12	-2.17	1.04	5.81	4.00	31.38	3.94	0.00	1.63	3.41	5.04
2011	163.76	159.75	185.08	176.60	255.38	178.19	163.33	147.29	129.68	157.31	160.91	184.97	170.41	74.44	97.92	122.96	132.49	14.27	11.33	19.32	12.48	83.25	28.35	9.49	1.74	8.07	9.27	13.47	-0.31	5.07	2.54	9.16
April 2010 to March 2011	145.46	145.32	158.22	159.37	148.69	160.94	146.25	115.96	119.07	157.20	151.71	171.58	152.69	74.67	93.97	120.68	122.74	17.28	12.61	25.14	14.30	121.59	49.91	13.06	0.95	9.07	1.84	16.54	-0.47	4.56	1.89	12.19
April 2011 to March 2012	170.59	163.64	198.00	182.15	329.47	183.39	171.81	173.84	134.62	158.70	165.48	174.74	177.95	74.32	98.26	122.96	137.70															
Mar 2012 /Mar 2012																		18.86	10.71	32.44	13.56	197.30	82.53	16.05	5.83	16.34	-23.26	20.23	-0.63	0.35	0.00	16.40
2011 Mar	148.27	148.00	161.61	162.48	154.38	164.18	148.26	121.93	120.28	153.69	151.49	178.21	158.74	74.67	97.41	122.96	126.88	-0.04	-0.50	-0.02	-1.16	11.20	0.82	0.39	-2.91	-4.69	0.46	1.93	0.00	1.11	0.00	1.79
Apr	153.28	149.65	171.73	163.96	236.14	165.57	150.47	122.54	120.93	154.41	152.18	177.88	171.29	74.67	97.64	122.96	128.00	3.38	1.11	6.26	0.91	52.97	0.50	0.54	0.47	0.46	-0.19	7.90	0.00	0.24	0.00	0.88
May	158.74	153.27	182.14	169.90	283.69	171.29	158.32	131.13	124.89	154.21	152.81	177.88	171.84	74.67	97.99	122.96	129.78	3.56	2.42	6.07	3.62	20.13	7.01	3.27	-0.13	0.41	0.00	0.32	0.00	0.36	0.00	1.40
June	162.43	156.21	187.32	173.20	304.46	174.62	161.33	142.52	133.37	154.75	158.79	177.54	172.04	74.67	97.75	122.96	130.78	2.32	1.92	2.84	1.94	7.32	8.69	6.79	0.35	3.92	-0.19	0.12	0.00	-0.25	0.00	0.77
July	169.92	162.52	195.28	177.95	339.06	179.28	166.84	146.28	133.61	156.36	158.02	191.37	172.04	74.20	97.62	122.96	130.37	4.61	4.03	4.25	2.74	11.37	2.64	0.18	1.04	-0.49	7.79	0.00	-0.63	-0.13	0.00	-0.32
Aug	170.12	165.95	194.01	185.41	265.29	187.18	170.68	150.34	134.50	156.89	161.31	191.30	173.22	74.20	98.05	122.96	132.82	0.11	2.11	-0.65	4.19	-21.76	2.77	0.66	0.34	2.08	-0.04	0.69	0.00	0.44	0.00	1.88
Sep	173.00	167.51	198.43	186.38	298.42	187.83	174.22	161.34	135.75	157.22	165.51	192.59	172.99	74.20	98.97	122.96	135.77	1.69	0.94	2.28	0.52	12.49	7.32	0.93	0.21	2.60	0.67	-0.14	0.00	0.94	0.00	2.23
Oct	172.14	169.75	191.18	186.89	226.74	188.16	176.31	171.66	139.06	158.16	167.25	192.64	180.36	74.20	99.93	122.96	140.58	-0.50	1.34	-3.65	0.28	-24.02	6.40	2.44	0.60	1.05	0.02	4.26	0.00	0.97	0.00	3.54
Nov	179.36	171.79	207.27	189.79	352.28	191.08	178.99	167.25	137.14	162.59	170.28	193.04	180.50	74.20	100.09	122.96	142.95	4.19	1.20	8.41	1.55	55.36	-2.57	-1.38	2.80	1.81	0.21	0.08	0.00	0.16	0.00	1.69
Dec	180.70	174.41	206.56	192.37	324.29	193.64	181.73	216.56	136.89	162.93	171.21	192.80	180.50	74.20	98.66	122.96	143.05	0.75	1.53	-0.34	1.36	-7.94	29.48	-0.18	0.21	0.55	-0.12	0.00	0.00	-1.43	0.00	0.07
2010 Jan	175.84	164.38	215.08	188.23	437.76	189.07	181.28	224.52	139.71	162.75	175.71	136.51	184.82	74.20	97.05	122.96	143.90	-2.69	-5.75	4.12	-2.15	34.99	3.68	2.06	-0.11	2.63	-29.20	2.39	0.00	-1.63	0.00	0.59
Feb	175.39	164.40	212.98	187.23	426.54	188.02	180.70	229.40	139.99	161.49	176.41	136.52	184.93	74.20	97.62	122.96	146.73	-0.25	0.02	-0.98	-0.53	-2.56	2.17	0.20	-0.77	0.40	0.01	0.06	0.00	0.59	0.00	1.97
Mar	176.23	163.85	214.04	184.52	458.95	184.96	180.82	222.55	139.57	162.65	176.25	136.76	190.85	74.20	97.75	122.96	147.69	0.48	-0.33	0.50	-1.45	7.60	-2.98	-0.30	0.72	-0.09	0.17	3.20	0.00	0.13	0.00	0.65