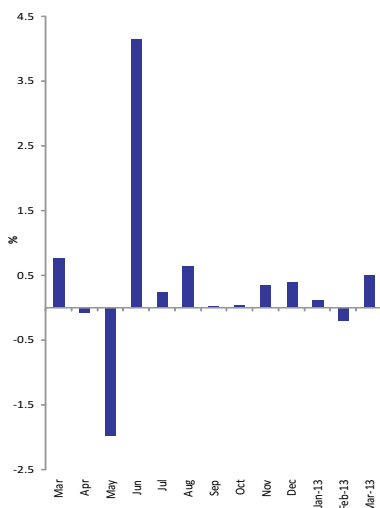


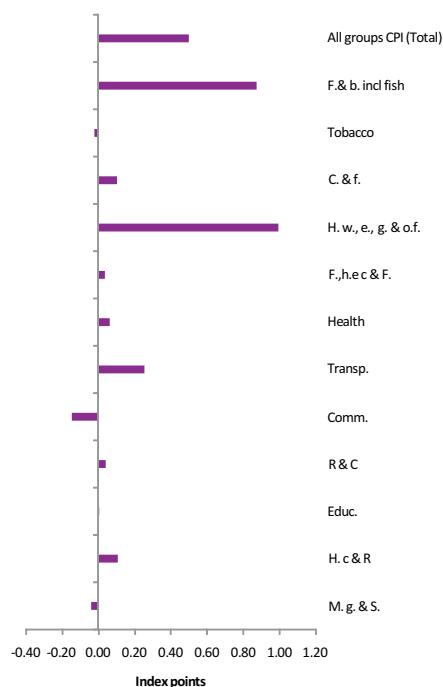
TIME OF RELEASE: MON 29 APRIL 2013

KEY FIGURES

All groups CPI
Monthly change
(Feb 2013 to Mar 2013)



Contribution to monthly change
(Feb 2013 to Mar 2013)



Inflation rates : Republic

	Feb 2012 to Mar 2013 % change	Mar 2012 to Mar 2013 % change
All groups CPI (Total)	0.50	4.17
Food and non-alcoholic beverages incl fish	0.88	6.17
Tobacco and aracanut	-0.02	-3.96
Clothing & footwear	0.10	5.98
Housing, water, electricity, gas & other fuels	0.99	4.21
Furnishing, household equip.& routine maint.	0.04	0.59
Health	0.06	7.49
Transport	0.25	2.82
Communication	-0.14	-0.14
Recreation & culture	0.04	-1.50
Education	0.00	5.70
Hotels, cafes & Restaurants	0.11	15.49
Miscellaneous goods & Services	-0.04	-2.94
CPI analytical series		
Total excluding fish	0.30	3.15
Food and non-alcoholic beverages excl fish	0.12	3.80
Fish	2.70	12.20
Actual rentals for housing	0.20	4.67

KEY POINTS

THE ALL GROUPS CPI

* The Consumer Price Index for all groups CPI rose 0.50% in March 2013, compared to fall of -0.20% in February 2013.

* The index for all items excluding fish rose 0.30% in March 2013 after increasing 0.32% in February 2013.

* The Consumer Price Index for all groups CPI rose 4.17% through the year to March 2013, compared with 4.43% through the year to February 2013.

OVERVIEW OF THE CPI MOVEMENTS

* The most significant price rises in this month were from liquid fuels (+33.07%), guest house room rates (+3.53%), construction charges (+3.20%), fish (+2.70%), vegetables (+1.97%) and fuels and lubricants (+1.69%)

*The most significant price falls recorded in this month were from fruits (-2.32%), passenger transport by air (-1.11%), electricity (-0.65%), mobile phone (-0.60%) and books (-0.27%).

INQUIRIES

For further information about CPI and related statistics, please contact the Statistics Division of DNP at 3349470 or email econstats@planning.gov.mv

FORTHCOMING ISSUES

Issue (monthly)	Release date
April 2013	27 May 2013
May 2013	24 June 2013
June 2013	29 July 2013
July 2013	26 August 2013

ROUNDING

Any discrepancies between totals and sum of components in this publication are due to rounding.

ABBREVIATIONS

DNP	Department of National Planning
CPI	Consumer Price Index
n.e.c	not elsewhere classified
F & b. incl fish	Food & non-alcoholic beverages including fish
C. & f.	Clothing & footwear
H. w., e., g. & o.f.	Housing, water, electricity, gas & other fuels
F.,h.e c & F.	Furnishing, household equip. & routine maintenance
Transp.	Transport
Comm.	Communication
R & C	Recreation & culture
Educ.	Education
H. c & R	Hotels, cafes & Restaurants
M. g. & S.	Miscellaneous goods & Services
IMF	International Monetary Fund

ACKNOWLEDGMENT

A consultant from IMF, Mr Keith Woolford assisted in the compilation of the index and in designing the templates of the publications. The overall design of this publication is based on Australian Bureau of Statistics (ABS) Consumer Price Index publication. The entire process of data validation, compilation and updating has been done in close collaboration with all the data providing outlets. In addition, Price & Economic Statistics unit staff in collaboration with Atoll Statistical officers in the Islands worked tirelessly to make this publication a reality. All their valuable services are gratefully acknowledged.

MAIN CONTRIBUTORS TO CHANGE

MAIN CONTRIBUTORS TO CHANGE

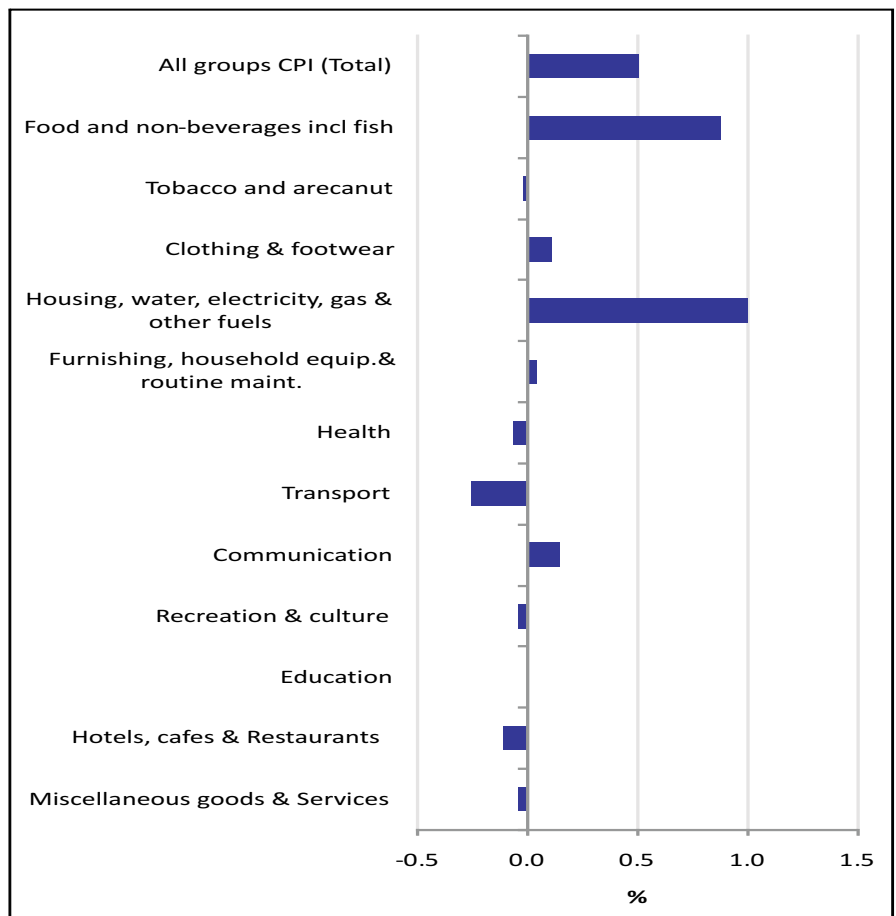
CPI GROUPS

The discussion of the CPI groups below are ordered in terms of their absolute significance to the change in All groups index points for the month (see table 1).

CONTRIBUTION TO MONTHLY CHANGE

CPI GROUPS	Republic
All the groups CPI (Total)	0.50
Food and non-alcoholic beverages incl fish	0.88
Tobacco and arecanut	-0.02
Clothing & footwear	0.10
Housing, water, electricity, gas & other fuels	0.99
Furnishing, household equip.& routine maint.	0.04
Health	0.06
Transport	0.25
Communication	-0.14
Recreation & culture	0.04
Education	0.00
Hotels, cafes & Restaurants	0.11
Miscellaneous goods & Services	-0.04

TOTAL PERCENTAGE CHANGE FROM PREVIOUS MONTH, DISPLAYING ALL CPI GROUPS FOR REPUBLIC, (Feb 2013 to Mar 2013)



FISH (+2.70%)

Fish group rose in March 2013. The main contributors to this rise were increase in price of skipjack tuna (+6.71%), dried fish (+1.13%), yellow fin tuna (+1.02%) and canned fish (+0.62%). This rise was partially offset by fall in reef fish (-2.17%), dried and sliced fish pack(-1.98%), mas mirus (-1.19%), and fish paste/ rihaakuru (-0.23%).

Over the twelve months until March 2013, fish group rose by 12.20%.

HOUSING, WATER, ELECTRICITY, GAS AND OTHER FUELS (+0.99%)

The Housing, water, electricity, gas & other fuels group rose in March 2013. Main contributors to the rise were increase of price of kerosene (+33.07%), construction charges (+3.20%) and rents (+0.20%). This rise was partially offset by fall in electricity charges (-0.65%) and plywood (-0.26%).

Over the twelve months until March 2013, the Housing, water, electricity, gas and other fuels group rose by 4.21%.

MAIN CONTRIBUTORS TO CHANGE...*continued*

FOOD AND NON-ALCOHOLIC BEVERAGES. (+0.88%)

Food and non-alcoholic beverages group rose in March 2013. The main contributors to this rise were increase in price of carrot (+48.58%), orange (+13.58%), coconut (+9.63%), cucumber (+8.67%), cabbages (+8.57%), skipjack tuna (+6.71%), tomato (+4.85%), dhal/mugu (+2.72%), corn flakes (+2.24%) and apples (2.09%). This rise was partially offset by fall in papaya (-44.15%), grapes (-9.35%), pumpkin (-7.24%), water melon (-5.24%) and mango (-4.88%) prices.

Over the twelve months until March 2013, food and non-alcoholic beverages group rose by 6.17%

TRANSPORT (+0.25%)

The transport group rose in March 2013. And the main contributor to this rise were increase in price of petrol (+1.72%), diesel (+1.47%), maintenance and repair services of motorcycles (+0.71%) and motorcycles (+0.46%). This effect was partially offset by the decrease in prices of international air fare Male' - Colombo - Male' (-4.58%).

Over the twelve months until March 2013, transport group rose by 2.82%.

HOTELS, CAFES & RESTAURANTS (+0.11%)

The Hotels, cafes & restaurants group, rose during March 2013. This was mainly due to the increase in price of Guest house room rate (+3.53%), fish & chips (+0.68%) and pizza (+0.02%).

Over the last twelve months the restaurant and hotel group rose by 15.49%.

CLOTHING AND FOOTWEAR (+0.10%)

The Clothing and footwear group also rose in March 2013 and the main contributors to this rise were increase in price of infant overall (+2.24%), T-shirt-boys (+1.34%), plastic slipper (+1.33%), T-shirts-girls (+0.53%), boxer shorts-men (+0.28%) and office tie (+0.27%). This rise was partially offset by fall in price of office shoes -man (-1.07%), T-shirt-man (-0.28%) and jeans- women (-0.19%).

Over the twelve months until March 2013, clothing and footwear group rose by 5.98 %.

HEALTH (+0.06%)

The Health group rose in March 2013 and the most significant contributor to this rise was increase in price of some pharmaceutical products such as band-aid (+2.15%), balm (+0.36%) and moove (+0.21%).

Over the twelve months until March 2013, the health group rose by 7.49%.

RECREATION & CULTURE (+0.04%)

The Recreation and culture group rose in March 2013. The most significant contributors to this rise were colour pencil (+2.12%), and pencil (+0.21%). However this effect was partially offset by decrease in price of children story book (-0.90%).

Over the twelve months until March 2013, the recreation and culture group fell by -1.50%.

MAIN CONTRIBUTORS TO CHANGE...continued

FURNISHING HOUSEHOLD EQUIPMENTS & ROUTINE MAINTENANCE OF THE HOUSE (+0.04%)

The group furnishing, household equipment and routine maintenance of the house rose in March 2013. The main contributors to this rise were refrigerators (+1.57%), washing powder (+0.61%), iron (+0.58%) and dish wash (+0.39%). This increase was partially offset by decrease in price of washing machine (-1.19%), rice cooker (-0.55%) and mosquito kit (-0.47%).

Over the twelve months until March 2013, the group furnishing household equipments and routine maintenance of the house rose by 0.59%.

EDUCATION (0.00%)

In education group , no change was observed in the rate of inflation during March 2013.

Over the twelve months until March 2013, the education group rose by 5.70%.

TOBACCO AND ARECANUT (-0.02%)

The tobacco and arecanut group fell in March 2013. Main contributors to this fall were decrease in price of aracanut (-0.29%).

Over the twelve months until March 2013, tobacco and arecanut group fell by -3.96 %.

MISCELLANEOUS GOODS AND SERVICES (-0.04%)

Miscellaneous goods and services group fell in March 2013. Most significant contributors to this fall were body spray (-1.44%), baby lotion (-0.85%), aftershave (-0.50%), baby cologne (-0.36%) and towels (-0.25%). This decrease was partially offset by increase in price of facial cream (+0.61%), hand bag (+0.59%), tissue (+0.56%) and body lotion(+0.35%).

Over the twelve months until March 2013, miscellaneous goods and service group fell by -2.94%.

COMMUNICATION (-0.14%)

The communication group fell in March 2013. The most significant contributor to this fall was decrease in price of mobile phones (-0.60%).

Over the twelve months until March 2013, the communication group fell by -0.14%.

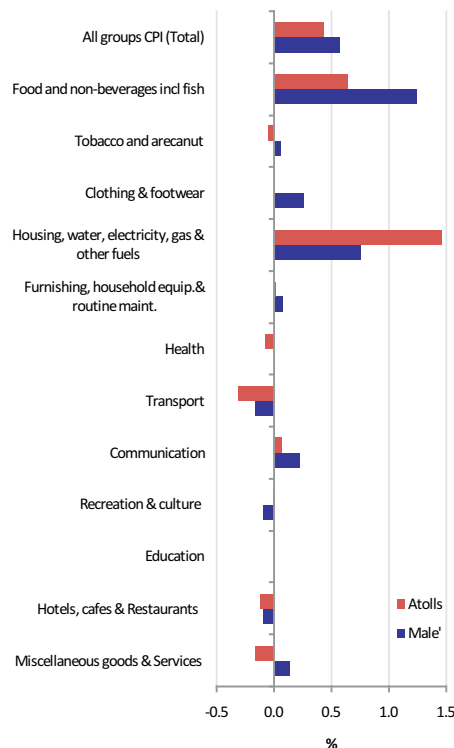
COMPARISON BETWEEN MALE' AND ATOLLS

ALL GROUPS CPI

Inflation rates : Male' & Atolls

Feb 2013 to Mar 2013

Total percentage change from previous month, displaying all CPI groups for Male' and Atolls, (Feb 2013 to Mar 2013)



All groups CPI (Total)

Food and non-alcoholic beverages incl fish

	Male'	Atolls
All groups CPI (Total)	0.58	0.44

Tobacco and aracanut

Clothing & footwear

Housing, water, electricity, gas & other fuels

Furnishing, household equip.& routine maint.

Health

Transport

Communication

Recreation & culture

Education

Hotels, cafes & Restaurants

Miscellaneous goods & Services

CPI analytical series

Total excluding fish

Food and non-alcoholic beverages excl fish

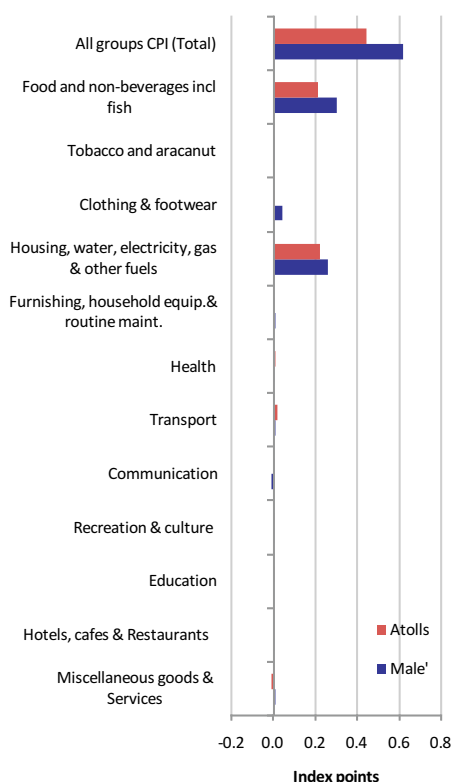
Fish

Actual rentals for housing

Total excluding fish	0.36	0.25
Food and non-alcoholic beverages excl fish	0.30	0.01
Fish	3.33	2.26
Actual rentals for housing	0.20	0.07

At the All Group Level, CPI rose both in Male' and Atolls during March 2013 with 0.58% and 0.44% respectively. (See table 2 & 3).

Contribution to monthly change, Male' & Atolls (Feb 2013 to Mar 2013)



For Male' the largest contributor to the rise in CPI was food & beverages including fish (+1.24%) followed by housing, water, electricity, gas and other fuels (+0.76%).

For the Atolls, the largest contributor to the rise in CPI was housing, water, electricity, gas and other fuels (+1.46%), food and beverages including fish (+0.64%) during the month of March 2013, followed by transport (+0.31%).

Food and beverages including fish was the largest positive contributor to the All Groups monthly movement in Male' recording a rise of +1.24%. This was mainly due to increase in price of fish (+3.33%), vegetables (+6.85%) and oils and fats (+0.94%).

Fish was the most significant positive contributor to food & beverages group monthly movement, recording a rise in both Male' and Atolls. The largest movement recorded in Male' was (+3.33%), due to increase in price of skipjack tuna (+6.87%), yellow fin tuna (+1.31%), canned fish (+1.15%) and Dried fish (+1.13%). In the Atolls, this movement was recorded at +2.26% due to increase in price of skipjack tuna (+6.57%), dried fish (+1.13%) and yellow fin tuna (+0.75%).

In Atolls, housing, water, electricity, gas and other fuels was the second largest positive contributor to all groups monthly movement recording a rise of (+1.46%). This was mainly due to the increase in price of kerosene (+29.14%), construction charges (+6.23%) and rents (+0.07%).

In Male' most significant negative contributor is communication (-0.23%), due to decreased in price of mobile phone (-0.86%).

The Miscellaneous goods and services group was the most significant negative contributor recorded in Atolls (-0.17%), due to fall in price of body spray-men (-2.14%) and body lotion (-1.38%).

COMPARISON BETWEEN MALE' AND ATOLLS

ALL GROUPS CPI

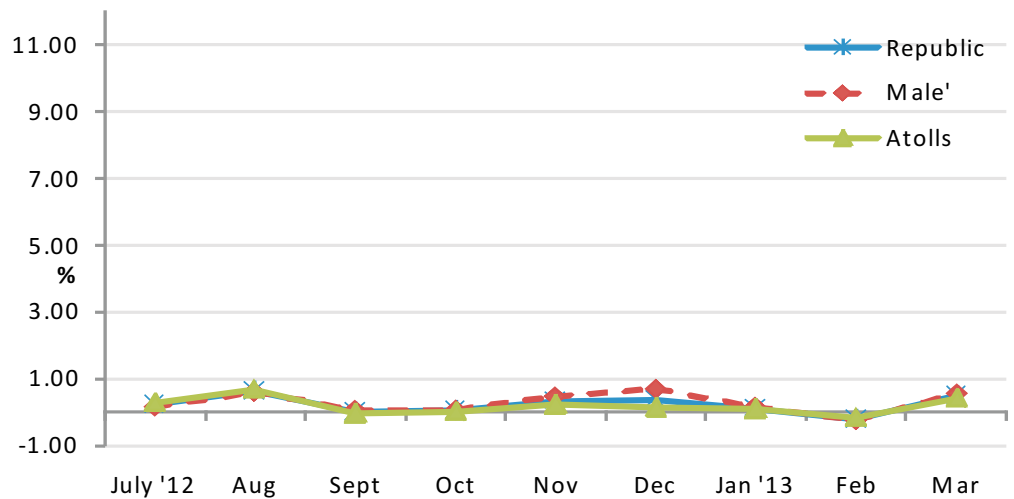
ALL GROUPS CPI, All groups index numbers and percentage changes

	Index number (a)	Percentage change	
	March 2013	Feb 2013 to Mar 2013	Mar 2012 to Mar 2013
Maldives	102.13	0.50	4.17
Male'	102.51	0.58	4.56
Atolls	101.79	0.44	na

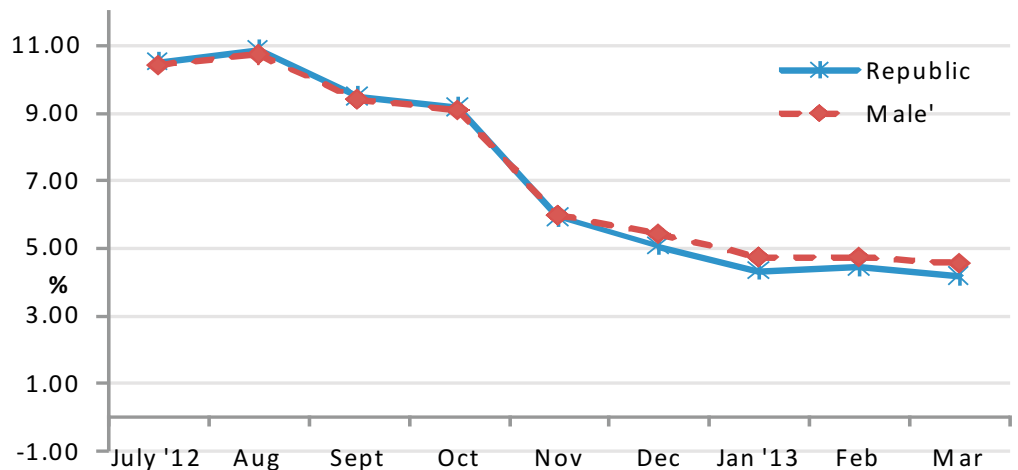
(a) Base of each index: June 2012=100

na - Not available

PERCENTAGE CHANGES (from previous month)



PERCENTAGE CHANGES (from corresponding month of previous year)



LIST OF TABLES

CONSUMER PRICE INDEX

1. CPI groups and sub-group, Republic
2. CPI groups and sub-group, Male'
3. CPI groups and sub-group, Atolls
4. CPI groups, sub-group and expenditure class, Republic (*available only on website*)
5. CPI groups, sub-group and expenditure class, Male' (*available only on website*)
6. CPI groups, sub-group and expenditure class, Atolls' (*available only on website*)
7. Analytical series (*available only on website*)