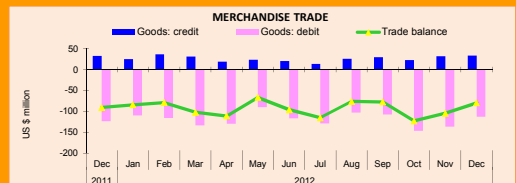


# KEY ECONOMIC INDICATORS - March 2014

Monthly Indicators	2013												2014		
	Mar	Apr	May	June	July	Aug	Sep	Oct	Nov	Dec	Jan	Feb	Mar		
<b>8. PUBLIC FINANCE / CASH FLOW (Rf mn)</b>															
8.1 Total revenue and grants (Excl project loans and grants)	812.0	122.4	152.9	85.7	60.9	99.1	138.8	52.8	84.6	54.9	1109.8	769.3	1119.2		
8.1.1 Tourism tax	89.9	83.4	73.5	67.1	51.6	64.5	74.7	63.7	79.2	48.6	29.2	2.5	63.5		
8.1.2 Import duty	121.0	122.6	131.9	112.5	136.9	122.1	146.3	148.5	119.4	120.6	140.7	148.0	136.5		
8.1.3 SOE transfers	2.5	7.5	12.8	2.5	5.0	158.1	37.5	20.0	16.5	27.5	45.0	0.0	0.0		
8.1.4 Lease rents from resorts	186.4	69.2	5.9	175.0	70.0	9.9	144.9	102.0	1.6	190.7	3.2	22.8	168.6		
8.2 Expenditure	2,031.23	922.01	1,280.68	1,152.97	1,195.69	1,077.86	1,412.12	1,036.02	887.82	788.54	2,226.20	1,342.39	1,512.40		
8.2.1 Capital Expenditure	812.05	122.44	152.83	85.71	60.85	99.07	138.82	52.80	84.63	54.80	250.79	207.41	198.07		
8.2.2 Recurrent expenditure	1,035.20	765.89	1,141.65	985.66	1,071.31	948.94	1,104.72	945.96	793.98	727.00	1,911.36	1,107.77	1,128.87		
Salaries / wages	282.58	279.29	284.81	281.57	268.60	277.92	271.72	267.83	261.97	265.89	278.22	261.08	272.49		
Allowances to Employees	199.75	188.90	195.02	253.69	211.17	182.62	183.21	178.30	174.67	170.12	207.98	200.30	186.60		
Subsidies	52.63	27.32	264.01	65.16	202.98	114.28	246.85	74.41	30.11	57.77	151.26	24.66	0.04		
8.3 Deficit / Surplus	-937.1	-39.5	-632.5	-289.2	398.5	-21.5	-504.6	-167.3	-331.1	154.2	-1116.37	-673.12	-393.18		
8.4 Import duty exemptions (including duty free shops)	na	na	na	na	na	na	na	na	na	na	na	na	na		

Monthly Indicators	2013												2014		
	Mar	Apr	May	June	July	Aug	Sep	Oct	Nov	Dec	Jan	Feb	Mar		
<b>9. MONEY AND BANKING (Rf mn)</b>															
9.1 Total Liquidity (M2)	22,597.1	22,543.3	22,341.7	22,439.5	22,120.5	22,533.6	22,631.6	23,292.7	24,343.1	23,675.8	25,773.5	26,644.3	28,445.4		
9.2 Net foreign assets	8,263.3	8,388.3	8,150.7	7,436.0	7,884.9	7,538.1	7,889.8	7,865.7	8,717.6	8,678.9	10,584.6	11,624.8	13,606.0		
9.3 Domestic credit	23,752.0	23,899.9	24,116.6	25,024.7	24,806.2	25,014.0	25,105.0	25,747.9	26,149.8	25,599.9	25,620.0	25,739.3	25,893.4		
9.3.1 Credit to private sector	14,951.9	15,179.2	15,170.6	15,284.5	15,325.6	15,441.2	15,697.5	15,528.9	15,216.0	14,999.4	15,184.2	15,179.0			
9.3.2 Net claims on Government	7,258.0	7,228.6	7,578.3	8,264.5	8,048.5	8,141.7	8,193.7	8,608.4	9,065.7	8,698.3	8,661.4	8,507.0	8,884.9		
9.4 Dollarisation Ratio	51.7	51.5	49.5	49.4	49.6	48.6	48.9	49.4	50.4	50.2	53.1	54.3	55.6		

Monthly Indicators	2013												2014		
	Mar	Apr	May	June	July	Aug	Sep	Oct	Nov	Dec	Jan	Feb	Mar		
<b>10. EXTERNAL TRADE (Rf mn)</b>															
10.1 Exports (f.o.b.)	320.1	213.7	190.5	171.1	141.9	204.8	208.8	251.3	281.2	142.8	296.0	154.4	111.8		
10.1.1 Fresh or Chilled Tuna	78.4	69.4	53.2	60.7	60.4	75.6	76.0	81.3	88.8	87.0	91.1	71.5	58.6		
10.1.2 Frozen Tuna	191.2	95.8	102.8	57.9	58.6	108.6	85.2	134.6	140.9	10.2	159.2	44.0	10.1		
10.1.3 Canned Fish	24.0	16.7	13.7	25.3	8.4	8.5	26.6	21.6	33.1	25.8	23.3	12.9	23.4		
10.1.4 Dried Tuna	8.2	10.7	11.2	14.0	8.3	8.8	7.8	5.3	7.5	4.5	8.6	11.3	6.5		
10.1.5 % Chn of Exports	63.0	-33.2	-10.9	-10.2	-17.1	44.4	1.9	20.3	11.9	-49.2	107.3	-47.9	-27.6		
10.2 Imports (c.i.f.)	1989.8	2142.5	2214.5	2133.1	2248.7	2126.3	2320.9	2560.5	2025.9	2407.5	2643.4	1948.6	2587.1		
10.2.1 Food and beverages	448.4	467.4	446.4	459.5	602.1	465.4	412.7	509.0	431.5	431.5	493.9	463.3	463.3		
10.2.2 Fuel and Lubricants	618.4	659.4	634.8	537.7	683.2	563.2	964.0	558.0	580.1	570.1	1121.5	476.9	971.0		
10.2.3 Consumer Goods	285.2	299.7	341.6	371.7	367.9	324.9	354.8	316.7	394.6	277.7	275.3	312.4			
10.2.4 Industrial supplies	334.3	394.6	351.6	439.3	313.0	317.5	480.9	443.5	476.1	382.5	397.9	465.2			
10.2.5 Machinery equipment	239.4	277.8	281.8	253.2	220.5	237.3	284.0	188.8	293.7	305.2	238.2	277.4			
10.2.6 % Chn of Imports	10.9	7.7	3.4	-3.7	5.4	-5.4	9.2	10.3	-20.9	18.8	9.8	-26.3	32.8		



**EXTERNAL TRADE:**

**EXPORTS:** The value of exports is decreased by 27.6 percent in March 2014 when compared to Feb 2014. And shows a decline of 65 percent when compared to March 2013. The total value of exports in March 2014 is 111.8 million Rf (fob).

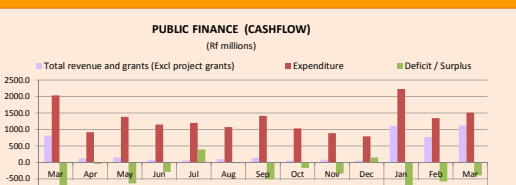
**IMPORTS:** The value of Imports in March 2014 is increased by 32.8 percent when compared to Feb 2014. And it shows an increase of 30.0 percent when compared to March 2013. The total of imports in March 2014 is 2,587.9 million Rf (cif).

**PUBLIC FINANCE:**

Based on monthly cashflow estimates the revenue of March 2014 is increased by 45.5 percent when compared to February 2014 and shows an increase of 37.8 percent when compared to March 2013. The total revenue of March 2014 is (Rf mn) 1119.2

The expenditure of March 2014 shows an increase of 12.67 percent when compared to Feb 2014 and shows a decrease of 25.54 percent when compared to March 2013. The total expenditure March 2014 is (Rf mn) 1512.40.

The overall deficit of the government stood at Mrf 393.18 million in March 2014.



**EXTERNAL RESERVES:**

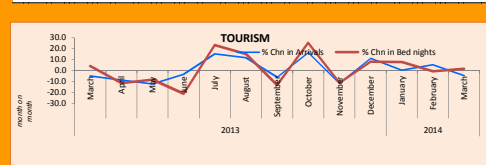
Gross international reserves is increased by 27.8 percent to 499.9 million US\$ in March 2014 from 391.1 million US\$ at the end of February 2014.

Monthly Indicators	2013												2014		
	Mar	Apr	May	June	July	Aug	Sep	Oct	Nov	Dec	Jan	Feb	Mar		
<b>11. BALANCE OF PAYMENTS (US\$ mn)</b>															
11.1 Goods: credit	na	na	na	na	na	na	na	na	na	na	na	na	na		
11.2 Goods: debit	na	na	na	na	na	na	na	na	na	na	na	na	na		
11.3 Trade balance	na	na	na	na	na	na	na	na	na	na	na	na	na		
<b>12. EXTERNAL RESERVES</b>															
12.1 Gross International reserves (US\$ mn)	338.2	350.9	355.6	344.4	350.4	348.5	347.5	341.8	334.0	368.3	385.0	391.1	499.9		
12.2 External reserves in months of imports (c.i.f.)	2.6	2.6	2.7	2.5	2.5	2.5	2.5	2.3	2.3	2.5	2.6	2.7	3.4		

Source: DNP, MMA, MOT, MHRYS, MOFA, MOFT, Maldives Customs Service

# KEY ECONOMIC INDICATORS March 2014

Monthly Indicators	2013 (provisional)												2014		
	Mar	Apr	May	June	July	Aug	Sep	Oct	Nov	Dec	Jan	Feb	Mar		
<b>1. GDP (at 2003 constant prices)</b>															
1.1 GDP Rf mn.	21387.6	21387.6	21387.6	21387.6	21387.6	21387.6	21387.6	21387.6	21387.6	21387.6	21387.6	21387.6	21387.6		
1.2 GDP per capita US \$	3845.5	3845.5	3845.5	3845.5	3845.5	3845.5	3845.5	3845.5	3845.5	3845.5	3845.5	3845.5	3845.5		
1.3 GDP growth (%)	3.7	3.7	3.7	3.7	3.7	3.7	3.7	3.7	3.7	3.7	3.7	3.7	3.7		
<b>2. TOURISM</b>															
2.1 Tourist arrivals ('000s)	99.5	90.6	79.4	76.5	88.0	98.3	92.2	107.3	94.6	105.0	105.3	110.7	105.6		
2.1.1 % Chn in Arrivals (month on month)	-5.0	-8.9	-12.4	-3.7	15.0	11.7	-6.2	16.4	-11.8	11.0	0.3	5.1	-4.6		
2.2 Tourist bed nights ('000s)	671.3	593.0	542.6	428.1	527.4	607.1	525.9	658.0	583.7	631.0	684.2	679.5	685.3		
2.2.2 % Chn in Bed nights (month on month)	4.0	-11.7	-8.5	-21.1	23.2	15.1	-13.4	25.1	-11.3	8.1	7.7	-0.7	0.9		
2.3 Bed capacity ('000s)	26.0	26.4	26.3	25.8	25.9	26.0	25.8	26.2	26.5	26.6	26.8	26.8	26.9		
2.4 Capacity utilization rate (%)	81.7	74.8	73.1	66.6	65.3	65.7	75.5	68.0	80.9	73.4	76.4	82.5	82.2		



**TOURISM PERFORMANCE: November 2013**

**Arrivals:** Tourist arrivals in March 2014 showed a decline of 4.6 percent when compared to February 2014 and showed an increase of 6.1 percent when compared to March 2013. The total tourist arrival in March 2014 is 105.6 thousand.

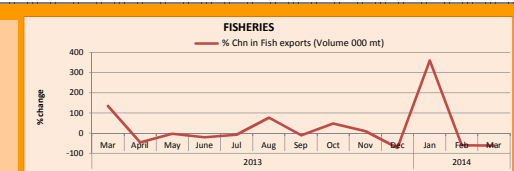
**Bednights:** Bednights in March 2014 shows a slight increase of 0.9 percent when compared to February 2014 and an increase of 2.1 percent when compared to March 2013.

Monthly Indicators	2013												2014		
	Mar	Apr	May	June	July	Aug	Sep	Oct	Nov	Dec	Jan	Feb	Mar		
<b>3. FISHERIES</b>															
3.1 Fish catch ('000 MTs)	na	na	na	na	na	na	na	na	na	na	na	na	na		
3.1.1 % Chn in Fish catch	na	na	na	na	na	na	na	na	na	na	na	na	na		
3.2 Tuna purchases ('000 MTs)	5.1	4.7	3.8	4.0	3.8	4.7	2.8	8.1	8.0	5.6	na	na	na		
3.2.1 % Chn in Fish purchases	-28.00	-7.84	-19.15	5.26	-5.00	23.68	-40.43	189.29	-1.23	-30.00	na	na	na		
3.5 Fish Exports (US\$ mn.)	20.10	13.10	12.0	10.7	9.2	15.4	13.0	na	na	na	na	na	na		
3.6 Fish Exports ('000 MTs)	6.60	3.60	3.5	2.8	2.6	4.6	4.1	6.1	6.7	1.8	8.3	3.3	1.3		

**FISHERIES**

**Fish Purchases:** Fish purchases in December 2013 shows a decline of 30 percent when compared to November 2013.

**Fish Exports:** The quantity of fish exports in March 2014 declined by 60.6 percent when compared to February 2014 and shows a decline of 80.3 percent when compared to March 2013. The total quantity of Fish exports in March 2014 is 1.3 ('000 MT).

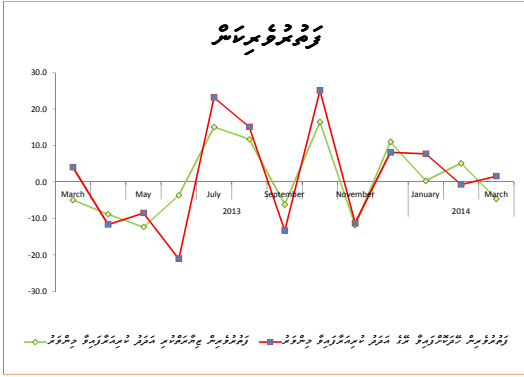


Monthly Indicators	2013												2014		
	Mar	Apr	May	June	July	Aug	Sep	Oct	Nov	Dec	Jan	Feb	Mar		
<b>4. CONSUMER PRICE INDEX (CPI)</b>															
4.5 CPI (National)	102.13	102.24	102.34	102.07	103.26	103.43	104.35	104.95	105.07	105.04	105.16	105.01	104.40		
4.6 Inflation Rate (National)	0.50	0.12	0.10	-0.27	1.17	0.88	0.58	0.12	-0.03	0.11	-0.14	-0.14	-0.59		
4.1 CPI (Male)	102.51	102.52	102.76	102.44	103.74	103.48	104.27	104.60	105.04	105.18	104.84	105.39	104.82		
4.2 Inflation rate (Male)	0.58	0.00	0.24	-0.31	1.26	-0.25	0.77	0.32	0.42	0.13	-0.32	0.52	-0.54		
4.3 CPI (Atoll)	100.37	100.36	95.84	96.43	100.34	100.34	100.34	100.93	100.93	100.93	100.93	100.93	103.37		
4.4 Inflation rate (Atoll)	0.44	0.21	-0.03	-0.23	1.08										

# ٧ رايونونڭ رايونى باغچىسى

## 2014 دىكى رايونى

### قۇرغۇچىلىق رايونى



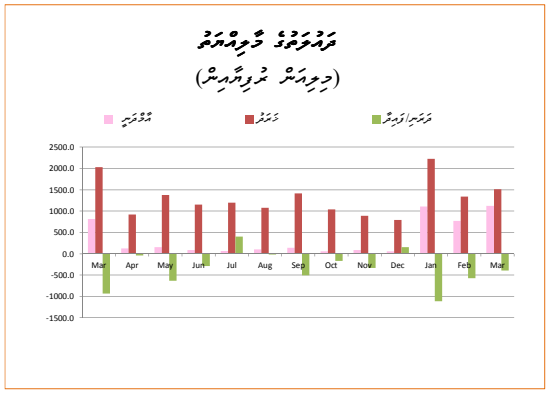
### قۇرغۇچىلىق رايونى

2014 قۇرغۇچىلىق رايونىدىكى قۇرغۇچىلىق مىقدارى 2013 قۇرغۇچىلىق رايونىدىكى قۇرغۇچىلىق مىقدارىغا قارىغاندا 4.6% ئاشىپ كەتتى. 2014 قۇرغۇچىلىق رايونىدىكى قۇرغۇچىلىق مىقدارى 6.1 مىليون كۇب مېتىر بولدى. 2013 قۇرغۇچىلىق رايونىدىكى قۇرغۇچىلىق مىقدارى 5.7 مىليون كۇب مېتىر بولدى. 2014 قۇرغۇچىلىق رايونىدىكى قۇرغۇچىلىق مىقدارى 2.1 مىليون كۇب مېتىر بولدى. 2013 قۇرغۇچىلىق رايونىدىكى قۇرغۇچىلىق مىقدارى 2.1 مىليون كۇب مېتىر بولدى.

### قۇرغۇچىلىق رايونى

قۇرغۇچىلىق رايونىدىكى قۇرغۇچىلىق مىقدارى 2014 قۇرغۇچىلىق رايونىدىكى قۇرغۇچىلىق مىقدارىغا قارىغاندا 45.5% ئاشىپ كەتتى. 2014 قۇرغۇچىلىق رايونىدىكى قۇرغۇچىلىق مىقدارى 37.8 مىليون كۇب مېتىر بولدى. 2013 قۇرغۇچىلىق رايونىدىكى قۇرغۇچىلىق مىقدارى 1119.2 مىليون كۇب مېتىر بولدى. 2014 قۇرغۇچىلىق رايونىدىكى قۇرغۇچىلىق مىقدارى 12.67 مىليون كۇب مېتىر بولدى. 2013 قۇرغۇچىلىق رايونىدىكى قۇرغۇچىلىق مىقدارى 25.5 مىليون كۇب مېتىر بولدى. 2014 قۇرغۇچىلىق رايونىدىكى قۇرغۇچىلىق مىقدارى 1512.4 مىليون كۇب مېتىر بولدى.

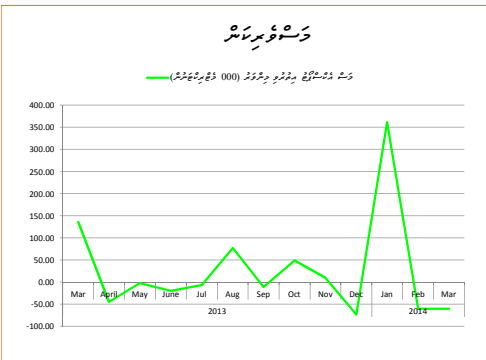
### قۇرغۇچىلىق رايونى (جۈملىسى ئىچىدە)



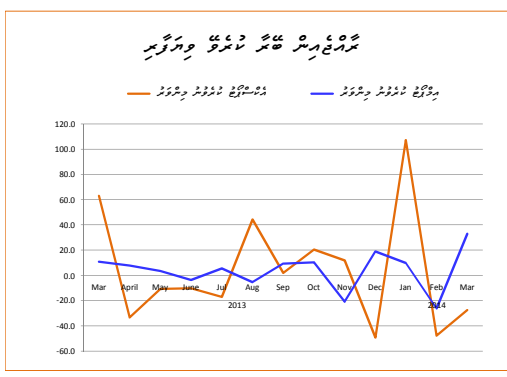
### قۇرغۇچىلىق رايونى

2014 قۇرغۇچىلىق رايونىدىكى قۇرغۇچىلىق مىقدارى 2013 قۇرغۇچىلىق رايونىدىكى قۇرغۇچىلىق مىقدارىغا قارىغاندا 30% ئاشىپ كەتتى. 2014 قۇرغۇچىلىق رايونىدىكى قۇرغۇچىلىق مىقدارى 1.3 مىليون كۇب مېتىر بولدى. 2013 قۇرغۇچىلىق رايونىدىكى قۇرغۇچىلىق مىقدارى 0.6 مىليون كۇب مېتىر بولدى. 2014 قۇرغۇچىلىق رايونىدىكى قۇرغۇچىلىق مىقدارى 80.3 مىليون كۇب مېتىر بولدى. 2013 قۇرغۇچىلىق رايونىدىكى قۇرغۇچىلىق مىقدارى 80.3 مىليون كۇب مېتىر بولدى.

### قۇرغۇچىلىق رايونى



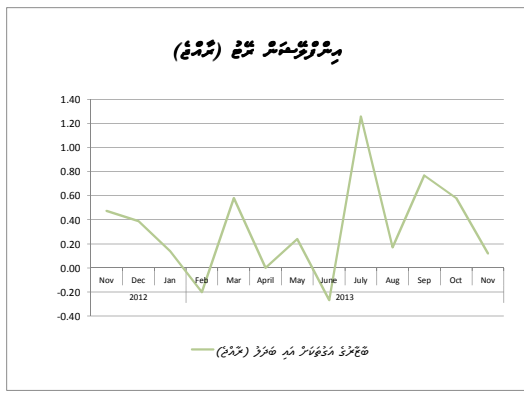
### قۇرغۇچىلىق رايونى



### قۇرغۇچىلىق رايونى

2014 قۇرغۇچىلىق رايونىدىكى قۇرغۇچىلىق مىقدارى 27.6 مىليون كۇب مېتىر بولدى. 2013 قۇرغۇچىلىق رايونىدىكى قۇرغۇچىلىق مىقدارى 65 مىليون كۇب مېتىر بولدى. 2014 قۇرغۇچىلىق رايونىدىكى قۇرغۇچىلىق مىقدارى 111.8 مىليون كۇب مېتىر بولدى. 2013 قۇرغۇچىلىق رايونىدىكى قۇرغۇچىلىق مىقدارى 32.8 مىليون كۇب مېتىر بولدى. 2014 قۇرغۇچىلىق رايونىدىكى قۇرغۇچىلىق مىقدارى 30.0 مىليون كۇب مېتىر بولدى. 2014 قۇرغۇچىلىق رايونىدىكى قۇرغۇچىلىق مىقدارى 2587.1 مىليون كۇب مېتىر بولدى.

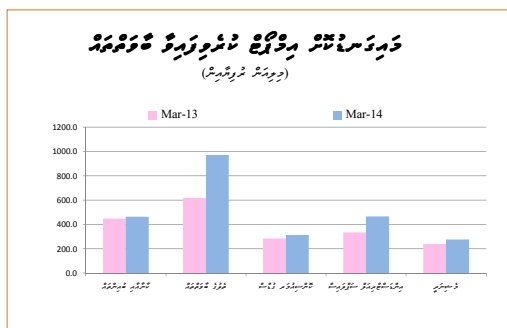
### قۇرغۇچىلىق رايونى (مەبلەغ)



### قۇرغۇچىلىق رايونى

2014 قۇرغۇچىلىق رايونىدىكى قۇرغۇچىلىق مىقدارى 0.54 مىليون كۇب مېتىر بولدى. 2013 قۇرغۇچىلىق رايونىدىكى قۇرغۇچىلىق مىقدارى 0.63 مىليون كۇب مېتىر بولدى. 2014 قۇرغۇچىلىق رايونىدىكى قۇرغۇچىلىق مىقدارى 0.59 مىليون كۇب مېتىر بولدى.

### قۇرغۇچىلىق رايونى



### قۇرغۇچىلىق رايونى

